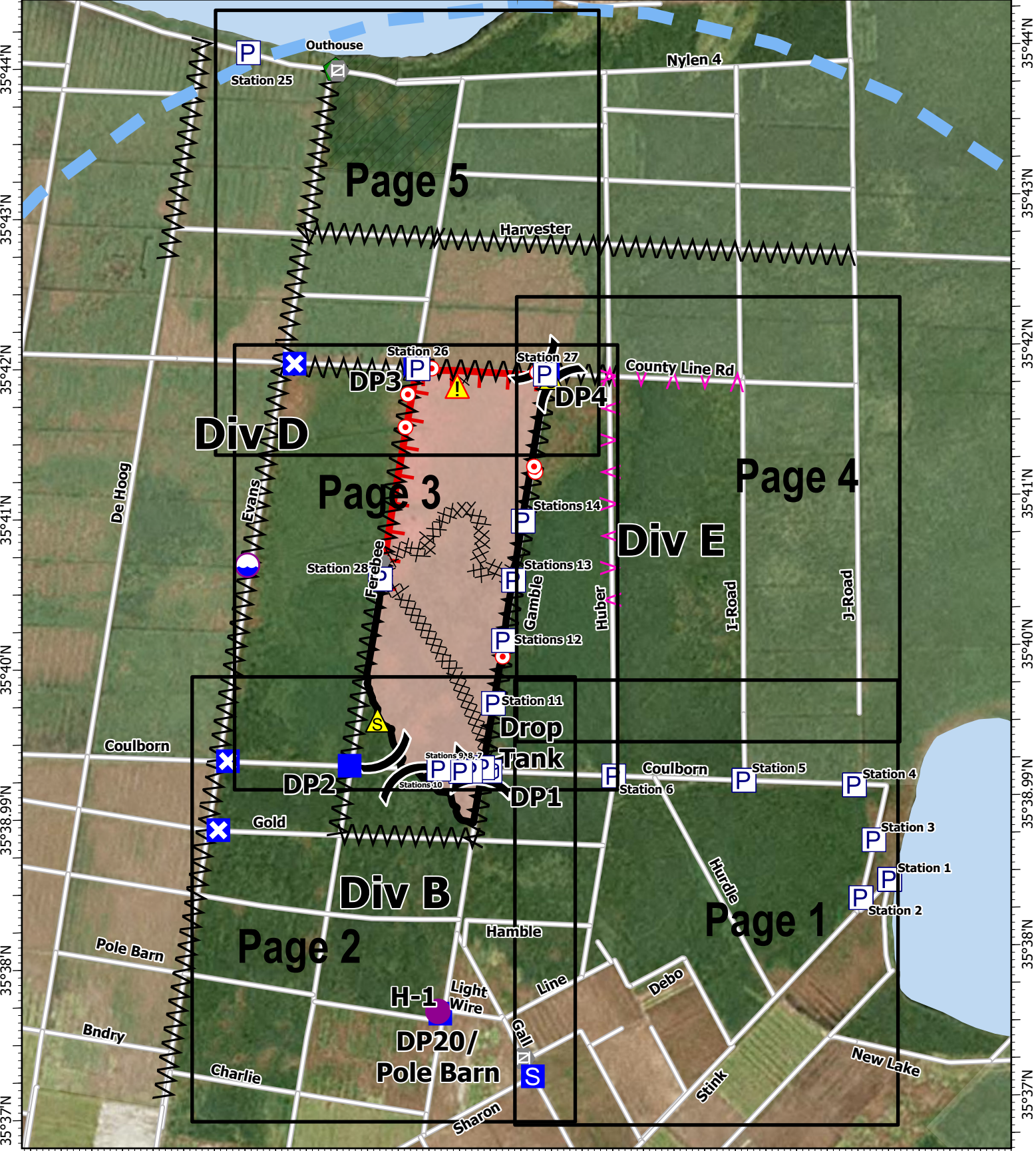


76°29'W 76°28'W 76°27'W 76°26'W 76°25'W 76°24'W 76°23'W 76°22'W 76°21.01'W



**IAP**  
 Ferebee  
 NCNCS-220039  
 7/6/2022  
 1,938 acres at 6/26/2022 1700h

- |                               |                      |             |
|-------------------------------|----------------------|-------------|
| Wildfire Daily Fire Perimeter | Division Break       | Hazard      |
| Contained                     | Drop Point           | Pump        |
| Uncontained                   | Closure              | Water Tank  |
| Completed Dozer Line          | Staging Area         | USFWS       |
| Completed Fuel Break          | Hot Spot - Spot Fire | State Parks |
| Planned Fuel Break            | Rain Gauge           | Lakes       |
| Temporary Flight Restriction  | Gate                 | Local Roads |
| Dip Site                      | Resource Location    |             |
| Helispot                      | Safety Zone          |             |

0 0.5 1 Miles

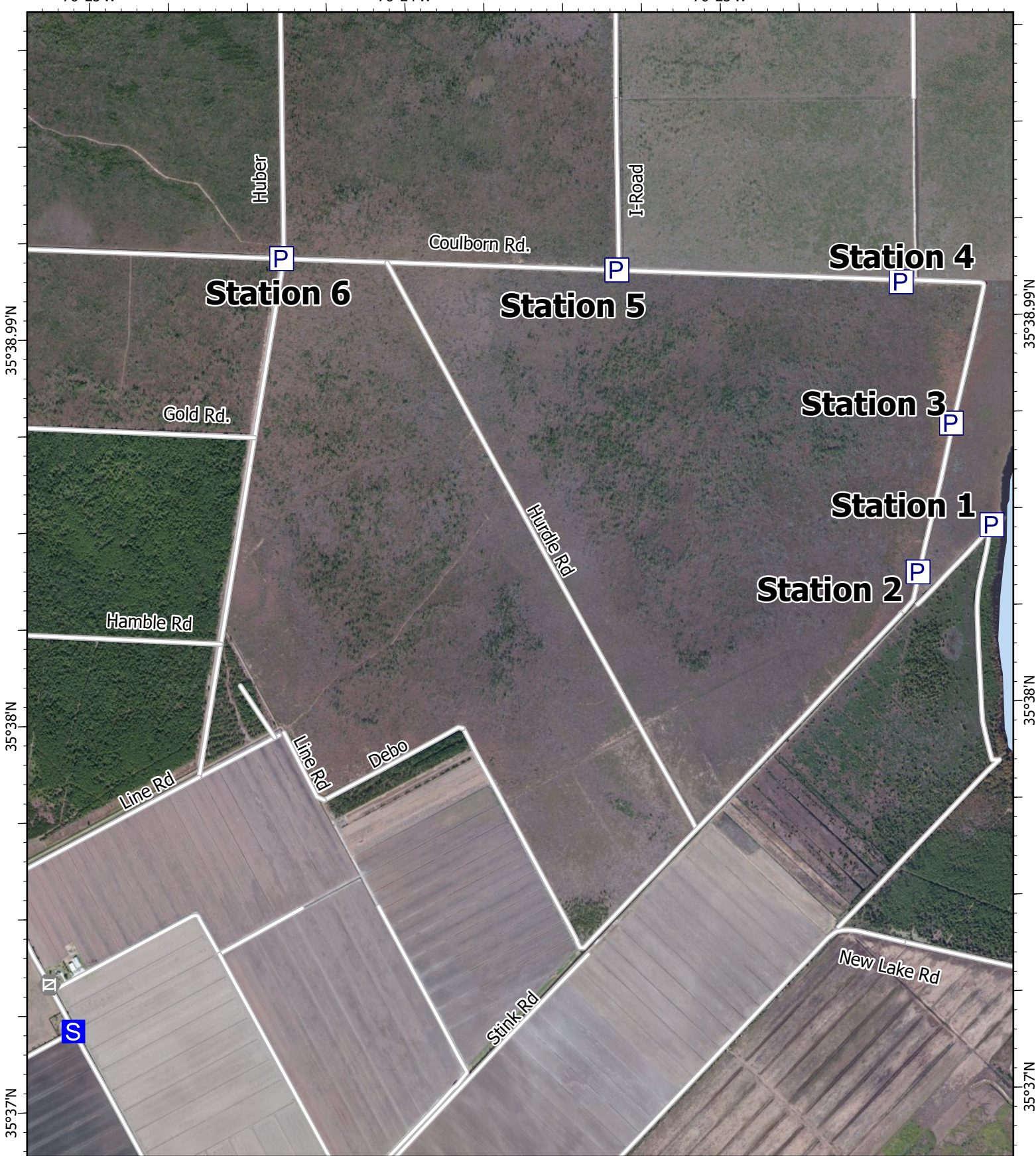
A. Lang  
 7/5/2022 1623  
 NAD 1983 NSRS2007 Datum



76°25'W

76°24'W

76°23'W



35°38.99'N

35°38.99'N

35°38'N

35°38'N

35°37'N

35°37'N

76°25'W

76°24'W

76°23'W

# IAP

Ferebee

NCNCS-220039

7/6/2022

1,938 acres at 6/26/2022 1700h



Staging Area



Gate



Pump

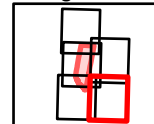
USFWS

Lake

Local Roads

0 500 1000 2000 Feet

Page 1 of 5



A.Lang  
7/5/2022 1617  
NAD 1983 NSRS2007 Datum



76°27'W

76°26'W

76°25'W

35°38.99'N

35°38.99'N

35°38'N

35°38'N

35°37'N

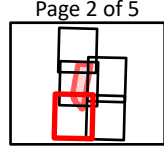
35°37'N

76°27'W 76°26'W 76°25'W

**IAP**  
 Ferebee  
 NCNCS-220039  
 7/6/2022  
 1,938 acres at 6/26/2022 1700h

- Wildfire Daily Fire Perimeter
- Contained
- Completed Dozer Line
- Completed Fuel Break
- Helispot
- ( ) Division Break
- Drop Point
- ✕ Closure
- S Staging Area
- Rain Gauge
- Gate
- ▲ Safety Zone
- P Pump
- WT Water Tank
- USFWS
- Local Roads

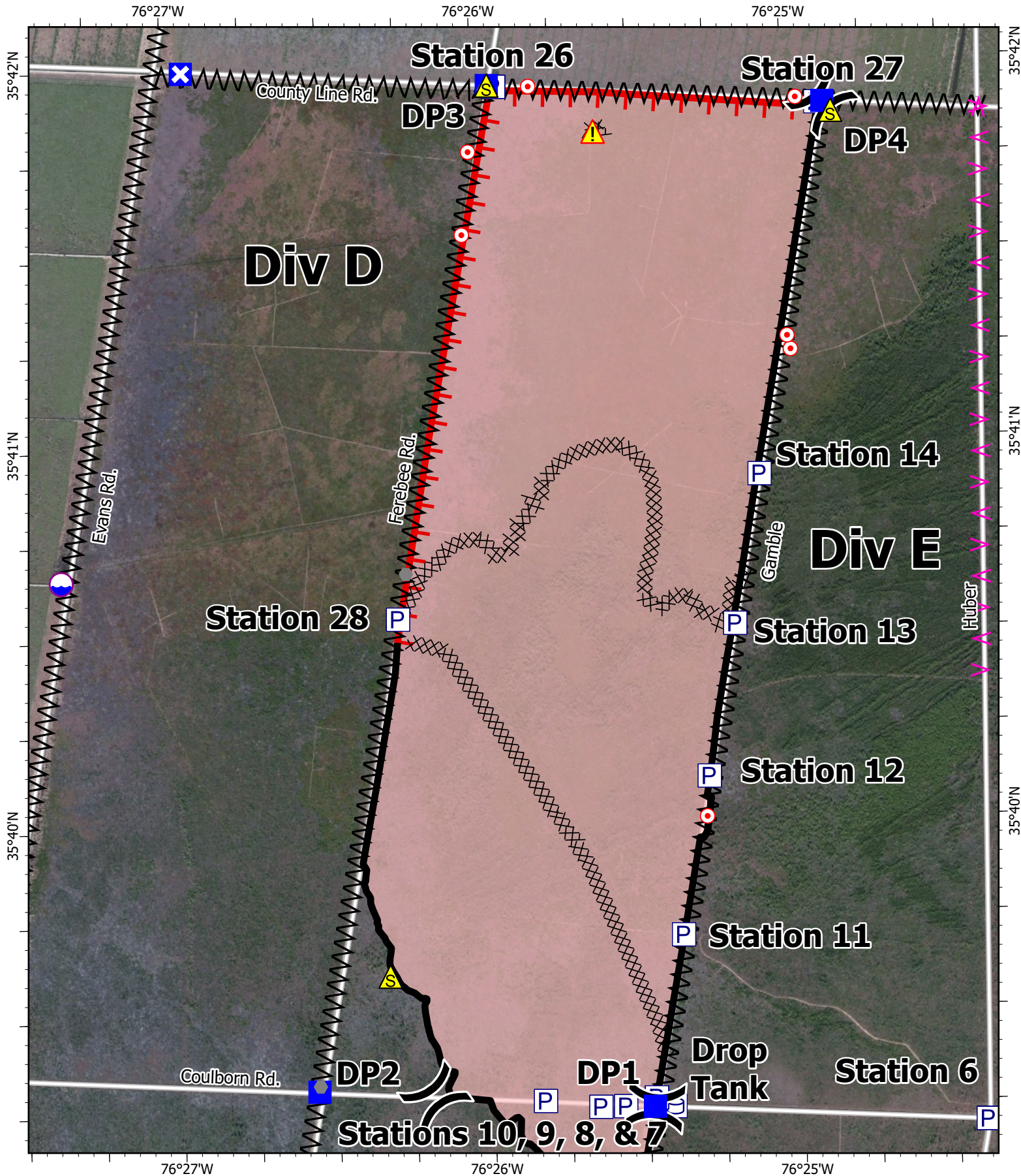
0 500 1000 2000  
 Feet



A.Lang  
 7/5/2022 1617  
 NAD 1983 NSRS2007 Datum







**IAP**  
**Ferebee**  
**NCNCS-220039**  
**7/6/2022**  
 1,938 acres at 6/26/2022 1700h

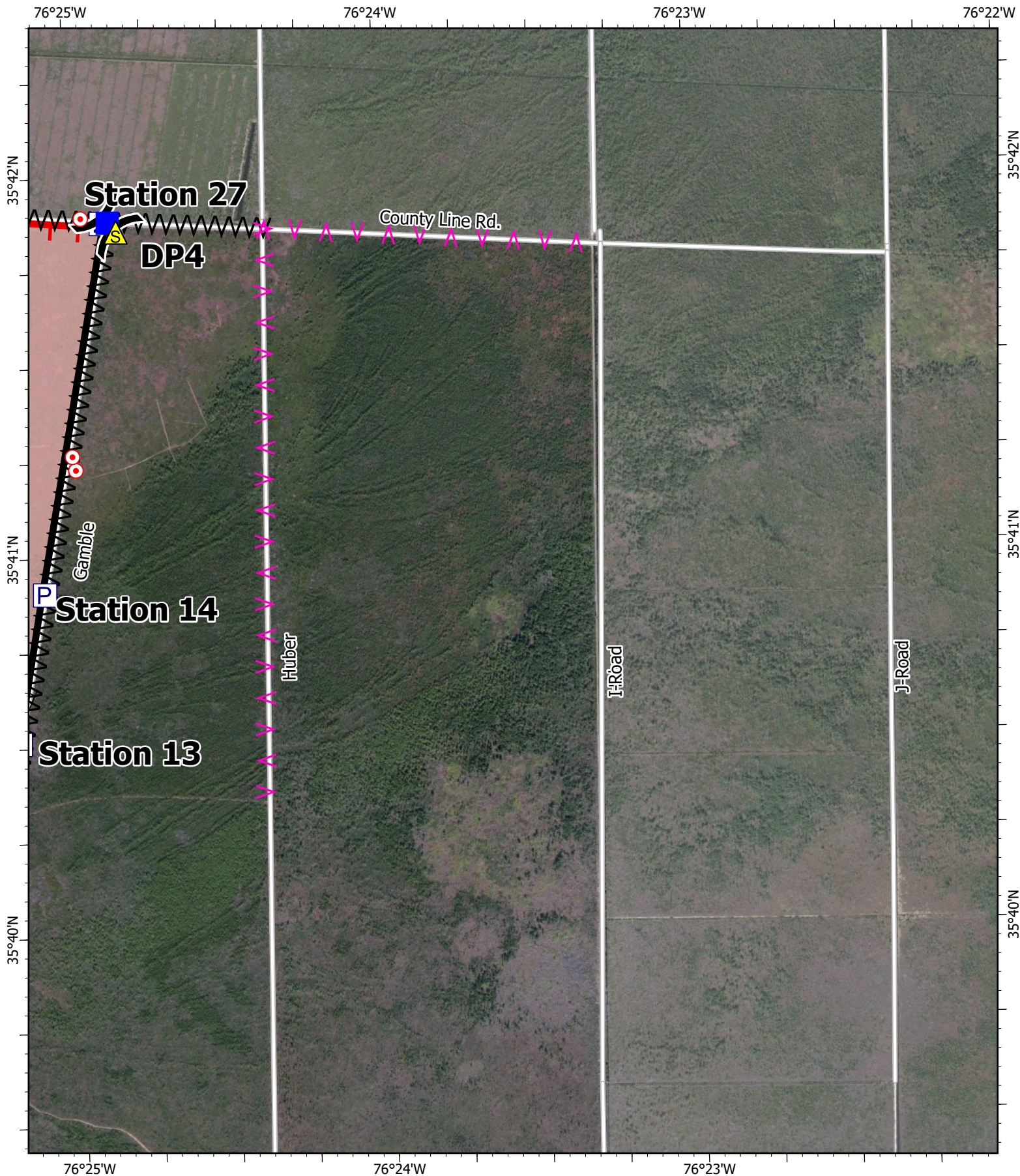
- |                               |                      |             |
|-------------------------------|----------------------|-------------|
| Wildfire Daily Fire Perimeter | Dip Site             | Safety Zone |
| Contained                     | Division Break       | Hazard      |
| Uncontained                   | Drop Point           | Pump        |
| Completed Dozer Line          | Closure              | Water Tank  |
| Completed Fuel Break          | Hot Spot - Spot Fire | USFWS       |
| Planned Fuel Break            | Rain Gague           | Local Roads |

0 500 1000 2000 Feet

Page 3 of 5

A.Lang  
 7/5/2022 1617  
 NAD 1983 NSRS2007 Datum





**IAP**  
 Ferebee  
 NCNCS-220039  
 7/6/2022  
 1,938 acres at 6/26/2022 1700h

- |                               |                      |
|-------------------------------|----------------------|
| Wildfire Daily Fire Perimeter | Drop Point           |
| Contained                     | Hot Spot - Spot Fire |
| Uncontained                   | Safety Zone          |
| Completed Dozer Line          | Pump                 |
| Completed Fuel Break          | USFWS                |
| Planned Fuel Break            | Local Roads          |
| Division Break                |                      |

0 500 1000 2000 Feet

Page 4 of 5

A.Lang  
 7/5/2022 1617  
 NAD 1983 NSRS2007 Datum





**IAP**  
**Ferebee**  
**NCNCS-220039**  
**7/6/2022**  
 1,938 acres at 6/26/2022 1700h

- |                               |                      |             |
|-------------------------------|----------------------|-------------|
| Wildfire Daily Fire Perimeter | Drop Point           | Hazard      |
| Contained                     | Closure              | Pump        |
| Uncontained                   | Hot Spot - Spot Fire | USFWS       |
| Completed Dozer Line          | Rain Gauge           | State Parks |
| Completed Fuel Break          | Gate                 | Lake        |
| Temporary Flight Restriction  | Resource Location    | Local Roads |
| Division Break                | Safety Zone          |             |

0 500 1000 2000 Feet

Page 5 of 5

A.Lang  
 7/5/2022 1617  
 NAD 1983 NSRS2007 Datum