

76°27'W 76°26.5'W 76°26'W 76°25.5'W 76°25'W 76°24.5'W

35°42'N
35°41.5'N
35°41'N
35°40.5'N
35°40'N
35°39.5'N
35°38.99'N

35°41.5'N
35°41'N
35°40.5'N
35°40'N
35°39.5'N
35°38.99'N

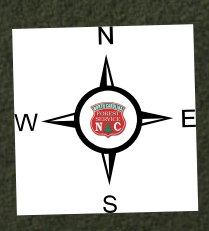
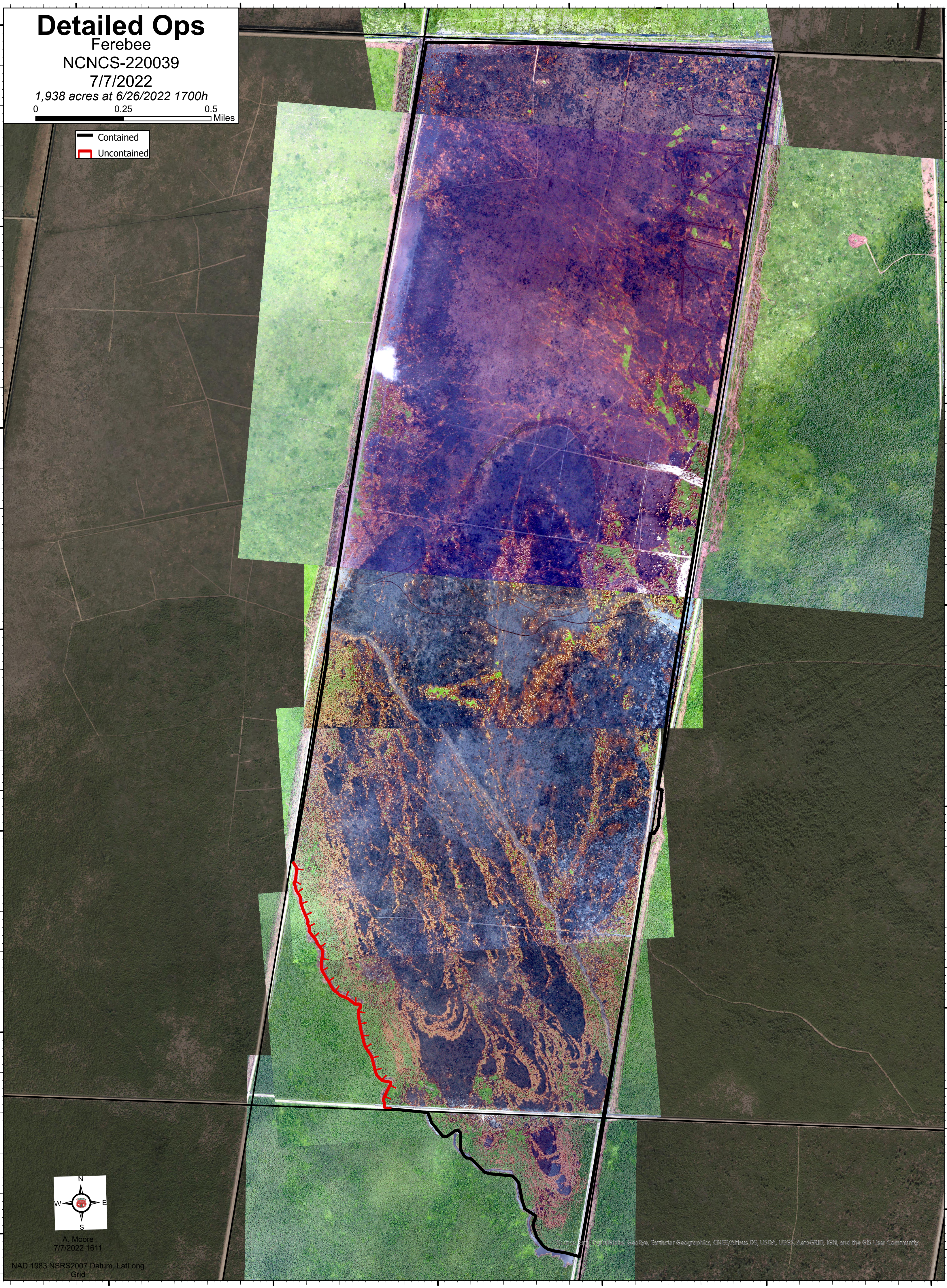
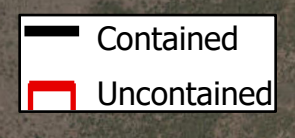
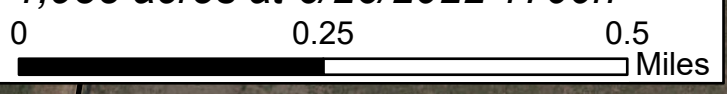
Detailed Ops

Ferebee

NCNCS-220039

7/7/2022

1,938 acres at 6/26/2022 1700h



A. Moore
7/7/2022 1611

NAD 1983 NSRS2007 Datum, LatLong Grid

Source: Earthstar Geographics, CNES/Airbus DS, USDA, USGS, AeroGRID, IGN, and the GIS User Community

76°27'W 76°26.5'W 76°26'W 76°25.5'W 76°25'W 76°24.5'W