



Incident Action Plan



Day Operational Period

Wednesday

3/30/2022

0700-1900

Thomas Divide Fire

TN-GSP-000131

PP PH6D (1522)



2022.thomasdivide.finance@firenet.gov



Incident Information



Check In Form (not NCFS)

INCIDENT OBJECTIVES	1. Incident Name Thomas Divide Complex	2. Date Prepared 3/29/22	3. Time Prepared 1700
4. Operational Period 3/30/22 0700 - 1900			
5. General Control Objectives For The Incident <u>Objectives for the Incident:</u> <ul style="list-style-type: none"> • Ensure protection of human life as top priority through the use of sound risk management decisions in all actions. • Provide for protection and minimize the loss of private property, infrastructure, State, County and Municipal facilities by using sound suppression tactics. • Maintain working relationships with federal, state, local, and Tribal government fire protection cooperators. Incorporate those personnel into operations when applicable. Work to maintain cooperative relationships with those agency representatives while providing for training opportunities to strengthen organizational capabilities. • Strongly consider long-term ecosystem health and the effects of suppression actions in the development of suppression strategies. Coordinate with the lead Resource Advisors (READ) to understand sensitive resource protection and management concerns, and develop repair guidelines for suppression damage. 			
<u>Control Objectives:</u> <ul style="list-style-type: none"> • Use appropriate resources and tactics to suppress, contain and control the fire. Suppression operations should focus on minimizing acres burned or impacted on State jurisdiction and/or private lands. • Utilize existing road/trail systems, changes in vegetation, fuels, weather, and natural barriers to minimize suppression-related impacts on the natural and culturally significant resources of the Eastern Band of Cherokee Indians. • Utilize Minimum Impact Suppression Tactics (MIST) to minimize natural resource impacts and mitigate for Wilderness values, with particular focus on trails, cultural resources, and water courses within Tribal and National Park Service lands 			
6. Weather forecast for Period			
7. General Safety Message			
8. ATTACHMENTS (X IF ATTACHED)			
<input checked="" type="checkbox"/> Organization List - ICS 203 <input checked="" type="checkbox"/> Medical Plan - ICS 206 [] _____ <input checked="" type="checkbox"/> Division Assignment Lists - ICS 204 [] Incident Map [] _____ <input type="checkbox"/> Communications Plan - ICS 205 [] Traffic Plan [] _____			
9. Prepared By (Planning Section Chief) Thomas Barrett 	10. Approved By (Incident Commander) /s/ Debbie Beard 		

ORGANIZATION ASSIGNMENT LIST		9. Operations Section			
1. Incident Name Thomas Divide Complex		Chief	Jeff Schardt /Aaron Gay (NC State)		
		Planning	Tyler Van Ormer		
		Divisions/Groups			
2. Date 03/30/2022		3. Time 1300		Division A	Jason Klawinsky
				Division C	Brenton Holt
4. Operational Period 0700-1900		Division E	Heath Thomas		
		Division GRSP Support	Greg Salansky		
5. Incident Commander and Staff		Division			
Incident Commander	Debbie Beard	Division			
Deputy	Michael Cheek	b.			
Safety Officer	Buddy Kelley/Larry Holsomback	Division			
Information Officer	Michelle Burnett	Division			
Information Officer(t)	Cathryn Dowd(v)	Division			
Liaison Officer	Micheal Wright	Division			
		c.			
		Branch Director			
6. Agency Reps		Division			
Agency	Name	Division			
NPS	Alan Sumeriski				
NCFS	Greg Smith				
BIA	Reese Kerbow	d.			
NPS	Shawn Nagle				
7. Planning Section		Branch Director			
Chief	Thomas Barrett	Division			
Chief (t)	Chalice Keith	Division			
Resources Unit	Melonie Sellers	Division			
Situation Unit	Chris Evans	Division			
SCKN/DMOB		Division			
GISS	Ethan Robertson				
GISS (v)	Michael Torbett				
Computer Tech	Kevin Curry	d. Air Operations Branch			
Computer Tech (t)	Josh Skidmore	AOBD	Nick Holschbach		
Documentation		Helibase Mgr.			
		ASGS			
		Air Attack Sup.			
		Air Attack Sup.			
		10. Finance Section			
		Chief	Jason Gillis		
8. Logistics Section		Chief (t)	Lisa Brown		
Chief	Tom Philipps	Time Unit/Cost(t)	Donna Bentley (v)		
Chief (t)	David Moody				
Supply Unit		Personnel Time			
Facilities Unit (t)	John Dunlap	Equipment Time			
Ground Support Unit		Cost Unit			
Communication Unit	Jimmy Tignor	Procurement			
		Procurement			
Ordering Manager (t)	Vince Mullins	Comp/Claims			
Medical Unit	Tim Exline				
		Prepared by (Resource Unit Leader)			
		Melonie Sellers			

...WIND ADVISORY IN EFFECT FROM 3 PM WEDNESDAY TO 11 AM EDT THURSDAY...

.DISCUSSION...

Surface high pressure will lead to continued dry conditions through late Wednesday. Southerly wind will increase late Wednesday becoming breezy to windy into Wednesday night. A cold front will cross the area overnight Wednesday into Thursday with widespread rain ahead of the front then wind shifting to the west behind the front and continued breezy through Thursday afternoon. Dry weather returns Thursday night into the first part of the weekend before a low pressure system moving along the Gulf Coast potentially brings more rain to the area.

.WEDNESDAY...

Sky/weather.....Mostly cloudy (75-85 percent) then becoming partly cloudy (40-50 percent).
 Max temperature.....Around 63.
 Min humidity.....51 percent.
 Wind (20 ft).....South winds 8 to 16 mph. Gusts up to 30 mph late in the afternoon.
 Mixing height.....1900 ft AGL early increasing to 3400 ft AGL in the afternoon.
 Transport winds.....South 10 to 12 mph increasing to 40 to 50 mph by late day.
 Smoke dispersal.....Poor (4300 knot-ft) early in the morning increasing to good (42300 knot-ft) in the early afternoon increasing to excellent (128900 knot-ft) late day.

.WEDNESDAY NIGHT...

Sky/weather.....Mostly cloudy (65-75 percent). Chance of rain showers in the evening then rain showers likely overnight.
 Min temperature.....Around 52.
 Max humidity.....89 percent.
 Wind (20 ft).....Breezy. South winds 15 to 25 mph. Gusts up to 38 mph increasing to 49 mph in the late evening and overnight.
 Transport winds.....South around 35 to 45 mph.
 LVORI.....3.
 Pcpn amount.....0.45 inches.
 Ceiling (FT).....10000 decreasing to 1500.

TIME (EDT)	6 PM	8 PM	10 PM	MIDNGT	2 AM	4 AM
Sky (%)	49	75	53	54	73	85
Weather cov		S CHC	CHANCE	CHANCE	CHANCE	LIKELY
Weather type	NONE	RNSHWR	RNSHWR	RNSHWR	RNSHWR	RNSHWR
Tstm cov						
Temp	62	60	59	58	56	54
Dewpoint	47	46	44	44	45	48
RH	58	60	59	60	65	79
20 ft wind	S 16	S 20	S 23	S 25	S 25	S 21
20 ft wind gust	31	38	44	48	49	40
Transport wind	S 45	S 25	S 25	S 31	S 37	S 38
LVORI	1	1	1	1	1	3
Ceiling (hft)	250	170	170	160	120	45

FIRE BEHAVIOR FORECAST

FORECAST NUMBER: #1	TYPE OF FIRE: Wildland
FIRE NAME: Thomas Divide	OPERATIONAL PERIOD: 3/30/2022 Day Shift
DATE ISSUED: 3/29/2022	TIME ISSUED: 1900
UNIT: Great Smokies NP / NCFS –Swain County	WRITTEN: <i>Kelly Cagle</i> – Fire Behavior Analyst

FUEL ASSUMPTIONS: The primary fuel model found on the Thomas Divide Complex is Fuel Model 9 (hardwood litter). There are also areas of rhododendron and mountain laurel that could be modeled in a shrub model – such as Shrub Model 3 or 8. Fire spread has been primarily driven by low fuel moistures in the 1 and 10 hour size class that are pushed by wind. 100 hour and 1000 hour fuels are either not available or are only moderately available to burn. Brush models will contribute to fire intensity when situated on steep slopes or when surface fire intensity is great enough to ignite green vegetation.

WEATHER SUMMARY: Significant wind event is expected for today and tonight. Wind advisories or High Wind Warnings are forecasted in and around the fire area. **See Fire Weather Forecast for Specifics!**

General Fire Behavior Forecast: Inside the fire footprint - expect isolated smoldering and creeping fire behavior today. Active flame is possible but is expected to be minimal. Humidities and forecasted cloud cover will keep fine fuel moistures high enough to deter major fire spread today. If fire escapes, gusty winds could cause fire to spread somewhat, but growth and intensity should be modest at best. Probability of Ignition is fairly low today and intense spread would likely be confined to a perfect alignment of sunny, south facing slopes and south winds.

Conditions that Cause Fire Control Concerns in the Southern Apps:
RH below 30% Wind speed > 20 mph BI >90% percentile KBDI > 350

Specific:

Cooper’s Creek

Div Alpha/Charlie- Expect minimal fire behavior today inside the fire footprint. There are a few scattered heavies that may continue to smolder. Little active, open flame has been observed in the last 2 days. If fire escapes containment lines under the wind event, fire spread is possible, but at moderate rate of spread until rainfall.

Stone Pile – Expect minimal fire behavior inside the fire footprint. Scattered heavies may continue to smoke, but little fire activity has been observed over the last 2 days. If fire escapes during the wind event, moderate fire spread would be possible until precipitation begins.

Initial Attack – any resources engaging initial attack should expect higher intensity if fire occurs on a south facing slope. Those fuels are dryer than fuels in the fire area – and alignment with wind will likely allow for increased rates of spread today.

Fine fuel moisture today is - 10 to 12%	Rates of Spread in Litter fuels - 10 to 25 chains/hour
Probability of Ignition today - 25 -30%	Rates of Spread in Brush - 6 to 9 chains/hour
Spotting Distance Today – short (100’ or <)	Flame Lengths - 2 to 5 feet average

AIR OPERATIONS: Strong winds today will most likely prevent the use of aviation resources.

FIRE BEHAVIOR SAFETY: Strong winds today will pose a serious and real threat to firefighter safety. Downed trees, limbs and powerlines are all possible today – especially during the afternoon and evening hours.

DIVISION ASSIGNMENT LIST			1. Branch		2. Division A		
3. Incident Name Thomas Divide Complex			4. Operational Period Date: 03/30/2022 Time: 0700/1900				
5. Operations Personnel							
Operations Chief		Jeff Schardt Aaron Gay (NC State)		Division Supervisor		Jason Klawinsky	
Operations Chief		Tyler Van Ormer					
Safety Officers		Buddy Kelley/Larry Holsomback					
6. Resources Assigned this Period							
Strike Team/Task Force/ Resource Designator		Leader / Name / Designator		Num. Per.	Trans. Needed	Drop Off PT./Time	Pick Up PT./Time
PatRick 1		Josh Childs		20			
PatRick 2		Levi Miller		20			
LEO (Traffic mitigation, EMT)							
7. Control Operations Go direct where feasible on section of open line that is over Thomas Divide Trail. Using MIST Tactics Mop-up fire's edge as appropriate.							
8. Special Instructions Minimize dozer use in National Park to existing trails. Confirm permission before engaging. Division will set trigger points for disengagement due to high wind or adverse weather.							
9. Division/Group Communication Summary							
Function	Frequency TX	MODE	TX CG		MODE	Frequency RX	RX CG
Tac D9 Tac2	131.8		131.8			159.375	159.375
Command Cowee Repeater	88.5		114.8			151.175	159.420
Air to Air	123.1250					123.1250	
Air to Ground	166.6125	A				166.6125	
Prepared by (RESL Melonie Sellers		Approved by (PSC2.) Thomas Barrett			Date 03/29/2022		Time 1500

DIVISION ASSIGNMENT LIST			1. Branch		2. Division C			
3. Incident Name Thomas Divide Complex			4. Operational Period Date: 03/30/2022 Time: 0700/1900					
5. Operations Personnel								
Operations Chief		Jeff Scardt Aaron Gay (NC State)		Division Supervisor		Brenton Holt		
Operations Chief		Tyler Van Ormer						
Safety Officer								
6. Resources Assigned this Period								
Strike Team/Task Force/ Resource Designator		Leader / Name / Designator		Num. Per.	Trans. Needed	Drop Off PT./Time	Pick Up PT./Time	
Sawtooth Module		Colton Bates		11				
ENG6 NCFS E236		Russell Choate		1				
ENG6 NCFS E1231		Dylan Rebbeor		1				
ENG6 BIA 2681		Lawrence Kioyayesva		4				
7. Control Operations Establish and maintain structure protection along fire line. Mop-up fire's edge as appropriate.								
8. Special Instructions Minimize dozer use in National Park to existing trails. Confirm permission before engaging. Division will set trigger points for disengagement due to high wind or adverse weather.								
9. Division/Group Communication Summary								
Function		Frequency TX	MODE	TX CG		MODE	Frequency RX	RX CG
Tac D9 Tac2		131.8		131.8			159.375	159.375
Command Cowee Repeater		88.5		114.8			151.175	159.420
Air to Air		123.1250					123.1250	
Air to Ground		166.6125	A			A	166.6125	
Prepared by (RESL) Melonie Sellers			Approved by (PSC2) Thomas Barrett			Date 03/29/2022		Time 1500

DIVISION ASSIGNMENT LIST			1. Branch		2. Division E		
3. Incident Name Thomas Divide Complex			4. Operational Period Date: 03/30/2022 Time: 0700/1900				
5. Operations Personnel							
Operations Chief		Jeff Schardt Aaron Gay (NC State)		Division Supervisor		Heath Thomas	
Operations Chief Planning		Tyler Van Ormer		Air Attack Supervisor			
Safety Officer							
6. Resources Assigned this Period							
Strike Team/Task Force/ Resource Designator		Leader / Name / Designator		Num. Per.	Trans. Needed	Drop Off PT./Time	Pick Up PT./Time
ENG6 NCFS E165		Christen Kelley		1			
7. Control Operations Patrol and monitor Establish and maintain structure protection along fire line Mop up along control lines and around structures							
8. Special Instructions Minimize dozer use in National Park to existing trails. Confirm permission before engaging. Division will set trigger points for disengagement due to high wind or adverse weather.							
9. Division/Group Communication Summary							
Function	Frequency-TX	MODE	TX CG		MODE	Frequency RX	RX-CG
Tac D9 Tac2	131.8		131.8			159.375	159.375
Command Cowee Repeater	88.5		114.8			151.175	159.375
Air to Air	123.1250					123.1250	
Air to Ground	166.6125	A				166.6125	
Prepared by RESL Melonie Sellers		Approved by (Planning Sect. Ch.) Thomas Barrett			Date 03/29/2022		Time 1500

DIVISION ASSIGNMENT LIST			1. Branch		2. Division GRSP support		
3. Incident Name Thomas Divide Complex			4. Operational Period Date: 03/30/2022 Time: 0700/1900				
5. Operations Personnel							
Operations Chief		Jeff Schardt Aaron Gay (NC State)		Division Supervisor		Greg Salansky	
Operations Chief		Tyler Van Ormer					
Safety Officer							
6. Resources Assigned this Period							
Strike Team/Task Force/ Resource Designator		Leader / Name / Designator		Num. Per.	Trans. Needed	Drop Off PT./Time	Pick Up PT./Time
GRSM WFM		Jordan Black		10			
PatRick 3		Benjamin Beard		20			
7. Control Operations Support park incident operations as requested. Ensure resources are cloned with Park frequencies.							
8. Special Instructions Road closure of 441 begins at 1000 hrs. Divisions will set trigger points for disengagement due to high winds or adverse weather.							
9. Division/Group Communication Summary							
Function	Frequency	System	Channel	Function	Frequency	System	Channel
TAC							
Repeater							
Prepared by (RESL) Melonie Sellers		Approved by (PSC2) Thomas Barrett			Date 03/29/2022		Time 1500

1. BRANCH	2. DIVISION/GROUP Public Safety	ASSIGNMENT LIST					
THOMAS DIVIDE COMPLEX		4. OPERATIONAL PERIOD 0700-1900	3/30/2022				
5. OPERATIONS PERSONNEL							
Operations Chief:			Division/Group Supervisor: James Latendresse				
Branch Director:			Air Attack Supervisor:				
6. RESOURCES ASSIGNED THIS PERIOD							
STRIKE TEAM/TASK FORCE RESOURCE DESIGNATOR	LEADER	NUMBER PERSONS	REPORTING LOCATION	SPECIAL EQUIPMENT / SUPPLIES	COMMENTS		
Oconaluftee Emergency Response	Dave Woodcock	2	LUFTEE RS				
Newton Bald Trailhead	Jackie Duhan	0	LUFTEE RS				
Mingus Creek Trailhead	Lee Mask	0	LUFTEE RS				
Deep Creek Trailhead	C. McMahan	0	LUFTEE RS				
OPERATION TASKS/Control Operations							
<ul style="list-style-type: none"> Maintain trailhead blocks on 441 at Newton Bald, Mingus Creek Trail, and the Deep Creek Trail in Deep Creek. Maintain emergency responses for the South District of GRSM. Close Hwy 441 at 1000 for upcoming wind event. 							
SPECIAL INSTRUCTIONS							
All trail blocks will operate on NC Viper. SD Rangers will coordinate with TN Rangers to close Hwy 441 at 1000 in advance of the forecasted wind event.							
DIVISION/GROUP COMMUNICATIONS SUMMARY							
FUNCTION		CHAN.		FUNCTION		CHAN.	
OPS	LOCAL	LOCAL RX/TX 167.1500		LOCAL			
	REPEAT	DOME		REPEAT			
PREPARED BY (RESOURCES UNIT LEADER)				APPROVED BY (INCIDENT COMMANDER)		DATE	TIME
/s/				/s/		3/29/2022	1000

AIR OPERATIONS SUMMARY
ICS-220

Prepared by: Nick Holschbach 406-925-1737
nicholas.holschbach@usda.gov

Prepared Date: 3/29/2022

Prepared Time: 1700

1. INCIDENT NAME:		2. OPS PERIOD DATE:		START TIME:		END TIME:		SUNRISE:		SUNSET TIME:	
Thomas Divide TN-GSP-000131 PPPH6D22 - 1502		3/30/2022 (Wednesday)		0800		2000		0724		1953	
3. REMARKS (Safety Notes, Hazards, See and Avoid, General Aviation Traffic, Aerial Hazards)											
<p>Send daily costs to Gold Team finance at jason_gillis@firenet.gov</p> <p>Additional Aircraft will be ordered thru TNCC – Cherokee Dispatch</p> <p>Pay attention to the incoming weather and what impact it may have with fire behavior and ensure a plan is set into place for aircraft in regards to inclement weather</p> <p>Be cognizant of any TFR intrusions (including all fixed-wing, UAS, and any helicopters not assigned to this incident.</p> <p>Conduct appropriate risk management for all aviation related missions</p> <p>Continue to utilize safe and proper techniques to help prevent the spread of COVID-19</p>											
4. READY ALERT AIRCRAFT				5. TFR NOTAM							
Medical protocol-see IAP				FDC 2/9840 (A-7)				Location: 2nm North of Bryson City, NC N35°28'13" W83°24'47" Radius: 5NM Elevation: 7500' MSL Freq: 123.1250			
Notify TNCC-Cherokee Dispatch to request aviation transport/medevac needs											

6. PERSONNEL		NAME	PHONE #	7. FREQUENCIES		AM	FM	8. FIXED-WING (Type / Make/Model / N#/Call Sign / Base)	
AOBD		Nick Holschbach	406-925-1737 (cell)	National Flight Follow			168.650 (tone 110.9)	A/ATTACK – none assigned	
East Zone FAO		Mike Bot	423-596-1538 (cell)	Thomas Divide A/G			166.6125	SEATS - Order As Needed Thru IC	
TNCC		Cherokee Dispatch	423-476-9775						
NCCC		Asheville Dispatch	828-257-4264						
43HX	HMGB	Chad Ingle	205-907-4531 (cell)	Thomas Divide A/A		123.1250			
				Air Guard			168.625 (tone 110.9)		

9. HELICOPTER (Letters for Remarks Box: EU=Exclusive Use / C=Cargo / P=Passengers / B=Bucket / SN=Snorkel / R=Rappel / SH=Short Haul / M=Medical Evacuation / H=Hoist)		MAKE/ MODEL	BASE	START	READY	REMARKS
FAA N#	TY					
N43HX	1	K-1200	Kiawah HSP – Bryson City, NC	0800	0830	CWN – Restricted Category / B

SAFETY MESSAGE

INCIDENT: Thomas Divide

DATE: March 30

TIME: Day Shift

Major Hazards and Risks:

Fire Environment and Transition

Today is a transition day! We still have our jobs to do! Keep your situational awareness!

STAY HYDRATED, Drink plenty of water. Even if Temperatures are low

Drive Defensively, STAY ALERT! Extreme Caution on Narrow roads, on curves stay to your right. Expect oncoming traffic at all times.

Watch out for SNAGS. Review SNAG SAFETY in IRPG

High wind alert for today. Stay focused on both your assignment and the weather.

Avoid areas with snags and fire weakened trees, have a saw or resources with saws available on dead end roads to cut out if wind event causes blockage of roads by trees.

Maintain good communication at all times in order to receive weather updates.

Watch for pedestrians both in town and in the National Park

Watch out for wildlife: Elk, Bear, and Deer are in the area

Common Denominators of Accidents on Fires: Accidents are likely to occur in periods of reduced fire activity, **transitions**, and mop-up stage. Maintain your situational awareness. Focus on your assignment. Manage distractions.

Transitions: As the transition takes place to the Gold Team, the need to effectively communicate on the fire is important. Take personal responsibility to ensure that people you interact with know what they need to know. Transition brings new personal, share information and any safety concerns. Know who you are working for ask questions if unsure of assignment.

Safety: Always make your first priority of each day

Safety Officers: Buddy Kelly, Larry Holsomback

Thomas Divide Complex 215A - Wednesday, March 30, 2022

8. Location	9. Hazard	6. Control or Abatement Action (Engineering, Administrative, PPE, Avoidance, Education, etc)
DIVS ALL	Helicopter Operations	<ul style="list-style-type: none"> ~ Stay clear of all bucket drops when suppression actions are in place and allow 1 minute prior to re-entry. ~ Monitor A-G communications. ~ Follow aviation safety guidelines in IRPG and IHOG.
DIVS ALL	Severe Weather	<ul style="list-style-type: none"> ~ Review and follow Thunderstorm Safety guidelines in IRPG page 21. ~ Stay informed on Weather Forecasts and Warnings. ~ Establish "Trigger Points" to withdraw, and ensure all know rally site. ~ Use "Risk Management" process to determine retreat criteria and actions. ~ Carry rain gear and extra food and water if weather limits retreat to ICP.
DIVS ALL	Hazard Trees	<ul style="list-style-type: none"> ~ Follow "Hazard Tree Safety" guidelines, IRPG page 22. ~ Post lookouts, or use a spotter in mop-up areas with personnel. ~ Don't park vehicles or take breaks in high concentrations of hazard trees. ~ Establish trigger points for disengagement during high wind events. ~ Remember that the hazard zone extends a minimum of 2 1/2 tree heights.
DIVS ALL	Extreme Fire Behavior	<ul style="list-style-type: none"> ~ Share weather observations with all personnel assigned to division. ~ Establish "Trigger Points" to withdraw. ~ Use "Risk Management" process prior to engaging in suppression actions, refer to page 1, IRPG.
DIVS ALL	Driving & Traffic	<ul style="list-style-type: none"> ~ Practice "Defensive Driving" techniques traveling on all roads and city streets. ~ Very narrow roads, use caution, especially on curves. ~ Use spotters when backing. ~ Yield to pedestrians and bicycles. ~ Observe posted speed limits. ~ Use the 3 second rule for following distance when driving. ~ Use chock blocks, turn wheels into hill. ~ Avoid distractions (eating, cell phones, radio). ~ Ensure that windshields are kept clean of dust and bugs.
DIVS ALL	Chain Saw Operations	<ul style="list-style-type: none"> ~ Follow "Hazard Tree Safety" guidelines, IRPG page 22 ~ Look up, Look down, Look around for hazard tree indicators. ~ Only fell and buck trees within your expertise, and training. ~ Follow "Procedural Felling Operations" on page 79 in IRPG. ~ Do not fall trees during high wind events. ~ Ensure proper use of all required PPE.
DIVS ALL	ATV/UTV use	<ul style="list-style-type: none"> ~ Ensure equipment is inspected and safe to use. ~ Restrict UTV's to max width of 50" on ATV trails due to width and severe out sloped conditions. ~ Ensure operator is trained and certified to operate. ~ Ensure operator has proper PPE according to the Redbook and/or RMA. ~ Question if it is mission critical.
DIVS ALL	Mop-up & Rehab	<ul style="list-style-type: none"> ~ Do not work above or below personnel during rehab/mop-up operations. ~ Alert crew personnel of rolling debris by yelling to affected individuals. ~ Position debris that could roll vertically on slope. ~ Wear eye protection.
DIVS ALL	Injury & Medical Emergency	<ul style="list-style-type: none"> ~ Assist injured employee appropriate medical care. ~ Use EMT's on Division for initial care. ~ Follow medical protocol as outlined in ICS-206 & IRPG Pages 118 & 119.
DIVS ALL	Steep Terrain & Rolling Debris	<ul style="list-style-type: none"> ~ Maintain 8'-10' spacing when working & walking. ~ Don't work above any personnel. ~ Be on the lookout for rolling rocks, debris, or burning material. ~ Evaluate necessity to send personnel in areas with limited access. ~ Post lookouts, IRPG pg. 7.
DIVS ALL	Communications	<ul style="list-style-type: none"> ~ Maintain communication with aviation resources, and suppression organization. ~ Ensure all know frequency and protocol for contacting resources.~ Utilize the ICS 205.~ Utilize human repeaters when working in dead spots.
DIVS ALL	Structure Protection & HAZMAT	<ul style="list-style-type: none"> ~ Review "Wildland Urban Interface" Watch outs, IRPG page 12. ~ Use "Structure Assessment" checklist, IRPG pages 12-16. ~ Follow "HAZMAT Incident Operations" on pages 36 in IRPG.
DIVS ALL	Unburned Area/Reburn Potential	<ul style="list-style-type: none"> ~ Monitor weather. ~ Base actions upon observed and predicted fire behavior. ~ LCES Checklist, IRPG pg. 7. ~ Look Up, Down and Around, IRPG pg. 3 & 4.


MEDICAL PLAN	1. INCIDENT NAME	2. DATE PREPARED	3. TIME PREPARED	4. OPERATIONAL PERIOD				
	THOMAS DIVIDE COMPLEX	3/27/22	0900	3/28/22 0800-2000				
5. INCIDENT MEDICAL AID STATIONS								
MEDICAL AID STATIONS	LOCATION						PARAMEDICS	
							YES	NO
Deep Creek Ranger Station	1912 East Deep Creek Road, Bryson City, NC							X
ICP	1139 US 19 Cherokee, NC 28719						X	
6. TRANSPORTATION								
A. AMBULANCE SERVICES								
NAME	ADDRESS	PHONE	LEVELS OF SERVICE					
			ALS	BLS				
Swain County EMS	155 Slopes St, Bryson City, NC	Dispatched through 700	X					
MAMA Medical Helicopter	Asheville/Franklin	Dispatched through 700	X					
LifeStar Medical Helicopter	UT Knoxville, TN	Dispatched through 700	X					
B. INCIDENT AMBULANCES								
NAME	LOCATION						PARAMEDICS	
							YES	NO
7. HOSPITALS								
NAME	ADDRESS	TRAVEL TIME		TRAUMA CENTER	HELIPAD		BURN CENTER	
		AIR	GRND	LEVEL	YES	NO	YES	NO
Mission Hospital	509 Biltmore Ave, Asheville, NC 828-213-1111	TBD	1:05	2	X		X	
Harris Regional Hospital	68 Hospital Rd, Sylva, NC 828-586-7000	N/A	0:35	N/A	X			X
University of TN Medical Center	1924 Alcoa Hwy, Knoxville, TN 865-305-9000	TBD	2:15	1	X		X	
Swain County Hospital	45 Plateau St, Bryson City, NC 828-488-2155	N/A	30	N/A	X			X
8. MEDICAL EMERGENCY PROCEDURES								
Use standard GRSM emergency radio procedures for medical incidents. First Responder on scene establishes and maintains Command & Control.								
Using park radio, responder broadcasts exact location; perform scene size-up/assess safety issues. Broadcast mechanism of injury & # of patients Via 8 Line, Dispatch: Please contact Tim Exline MEDL 727-243-4144 if any IWI's occur.								
Maintain proper PPE during EMS contact. Make contact with incident ambulance for response.								
Use standard park procedures through dispatch if air transport is required								
Park EMTs follow standard EMS protocols and procedures per FM51.								
206 ICS	9. PREPARED BY (MEDL)			10. REVIEWED BY (Safety Officer))				
	Tim Exline							

INCIDENT RADIO COMMUNICATIONS PLAN (ICS 205)

1. Incident Name: Thomas Divide Complex	2. Date/Time Prepared: Date: 03/29/2022 Time: 1800	3. Operational Period: Date From: 03/30/2022 Time From: 0700 Date To: Time To: 2000
---	---	--

4. Basic Radio Channel Use:										
Zone Grp.	Ch #	Function	Channel Name/Trunked Radio System Talkgroup	Assignment	RX Freq N or W	RX Tone/NAC	TX Freq N or W	TX Tone/NAC	Mode (A, D, or M)	Remarks
			D-9 Cowee		151.175	159.420	88.5	114.8		
			D-9 Tac 1		151.280	151.280	131.8	131.8		Secondary Tac intermittent use only
			D-9 Tac 2		159.375	159.375	131.8	131.8		Primary Tac
			Air to Air		123.1250		123.1250			
			Air to Ground		166.6125		166.6125		A	

5. Special Instructions:

6. Prepared by (Communications Unit Leader): Name: David Moody LSC	Signature: 
ICS 205	IAP Page _____
Date/Time: 03/29/2022 @2000	

Finance Message

For Gold Team members and contract resources only

Take a photo of a signed hard copy shift ticket of CTR. Make sure your photos are legible and the supervisor's signature are visible. Include your phone number in the comments should the finance section have questions. Electronic CTRs and Shift tickets are acceptable as well. Send all shift tickets and CTRs to the finance email below.

- Document hazardous pay with an explanation in the comments on the CTR.
- Remember to show a break.
- If you are an AD, please send your casual hire form to the finance email below.
- Contract resources need to send a copy of your resource order and a copy of your agreement to the email below.

Please label all emails to finance with your resource number in the subject line.

2022.thomasdivide.finance@firenet.gov

Feel free to give us a call if you have questions or concerns.

Donna Bentley TIME (706)-474-3216

or

Jason Gillis FSC2 (912) 314-9233

Human Resource Message

The mission of the Southern Area Gold Team is to safely, effectively and efficiently manage the Thomas Divide Fire by maintaining a team of skilled and productive personnel. During this incident we will strive to successfully complete our mission and achieve our objectives while creating a positive drug and alcohol free work environment for all assigned incident personnel. Consumption of drugs that alter decision making ability, such as marijuana and alcohol, is prohibited while assigned to the incident.

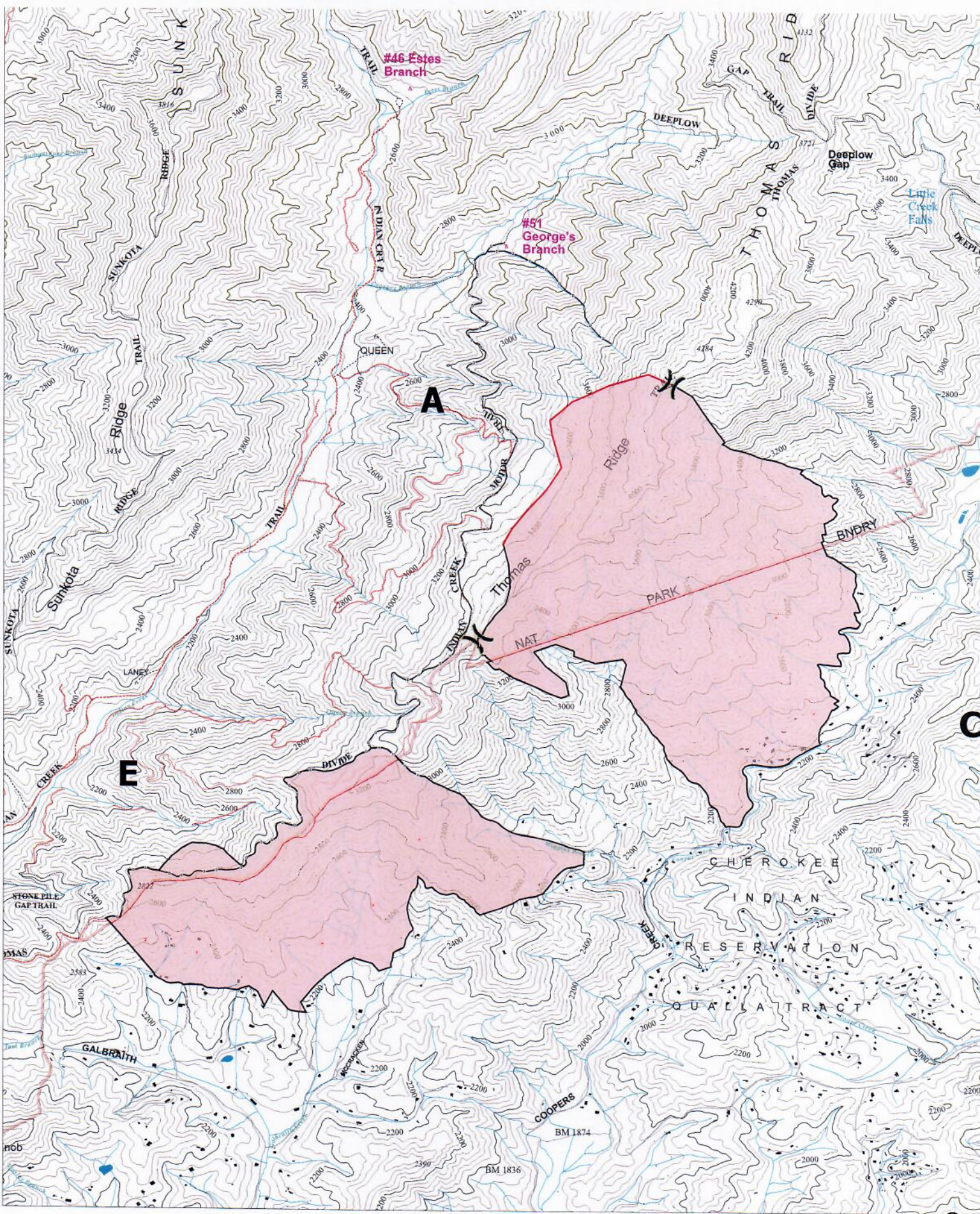
The Gold Team fully supports EEO and will not tolerate sexual harassment or any form of discrimination!

All inappropriate behavior will be dealt with promptly. Disciplinary action and reporting to an individual's home unit will be initiated as necessary.

Please report any incidents of inappropriate behavior to your supervisor, Michael Cheek or myself immediately.

Deborah Beard, Incident Commander





Thomas Divide Complex
 TN-GSP-000131
 March 30, 2022
 Day Shift



MEDICAL PLAN (ICS 206 WF)

Controlled Unclassified Information//Basic

Medical Incident Report

FOR A NON-EMERGENCY INCIDENT, WORK THROUGH CHAIN OF COMMAND TO REPORT AND TRANSPORT INJURED PERSONNEL AS NECESSARY.

FOR A MEDICAL EMERGENCY: IDENTIFY ON SCENE INCIDENT COMMANDER BY NAME AND POSITION AND ANNOUNCE "MEDICAL EMERGENCY" TO INITIATE RESPONSE FROM IMT COMMUNICATIONS/DISPATCH.

Use the following items to communicate situation to communications/dispatch.

1. CONTACT COMMUNICATIONS / DISPATCH (Verify correct frequency prior to starting report)

Ex: "Communications, Div. Alpha. Stand-by for Emergency Traffic."

2. INCIDENT STATUS: Provide incident summary (including number of patients) and command structure.

Ex: "Communications, I have a Red priority patient, unconscious, struck by a falling tree. Requesting air ambulance to Forest Road 1 at (Lat./Long.) This will be the Trout Meadow Medical, IC is TFLD Jones. EMT Smith is providing medical care."

Severity of Emergency / Transport Priority	<input type="checkbox"/> RED / PRIORITY 1 Life or limb threatening injury or illness. Evacuation need is IMMEDIATE <i>Ex: Unconscious, difficulty breathing, bleeding severely, 2° - 3° burns more than 4 palm sizes, heat stroke, disoriented.</i> <input type="checkbox"/> YELLOW / PRIORITY 2 Serious Injury or illness. Evacuation may be DELAYED if necessary. <i>Ex: Significant trauma, unable to walk, 2° - 3° burns not more than 1-3 palm sizes.</i> <input type="checkbox"/> GREEN / PRIORITY 3 Minor Injury or illness. Non-Emergency transport <i>Ex: Sprains, strains, minor heat-related illness.</i>	
Nature of Injury or Illness & Mechanism of Injury		Brief Summary of Injury or Illness <i>(Ex: Unconscious, Struck by Falling Tree)</i>
Transport Request		Air Ambulance / Short Haul/Hoist Ground Ambulance / Other
Patient Location		Descriptive Location & Lat. / Long. (WGS84)
Incident Name		Geographic Name + "Medical" <i>(Ex: Trout Meadow Medical)</i>
On-Scene Incident Commander		Name of on-scene IC of Incident within an Incident <i>(Ex: TFLD Jones)</i>
Patient Care		Name of Care Provider <i>(Ex: EMT Smith)</i>

3. INITIAL PATIENT ASSESSMENT: Complete this section for each patient as applicable (start with the most severe patient)

Patient Assessment: See IRPG page 106

Treatment:

4. TRANSPORT PLAN:

Evacuation Location (if different): (Descriptive Location (drop point, intersection, etc.) or Lat. / Long.) Patient's ETA to Evacuation Location:

Helispot / Extraction Site Size and Hazards:

5. ADDITIONAL RESOURCES / EQUIPMENT NEEDS:

Example: Paramedic/EMT, Crews, Immobilization Devices, AED, Oxygen, Trauma Bag, IV/Fluid(s), Splints, Rope rescue, Wheeled litter, HAZMAT, Extrinsic

6. COMMUNICATIONS: Identify State Air/Ground EMS Frequencies and Hospital Contacts as applicable

Function	Channel Name/Number	Receive (RX)	Tone/NAC *	Transmit (TX)	Tone/NAC *
COMMAND					
AIR-TO-GRND					
TACTICAL					

7. CONTINGENCY: Considerations: If primary options fail, what actions can be implemented in conjunction with primary evacuation method? Be thinking ahead.

8. ADDITIONAL INFORMATION: Updates/Changes, etc.

REMEMBER: Confirm ETA's of resources ordered. Act according to your level of training. Be Alert. Keep Calm. Think Clearly. Act Decisively.