



Incident Action Plan



Day Operational Period

Thursday

3/31/2022

0700-1900

Thomas Divide Complex

TN-GSP-000131

PP PH6D (1522)


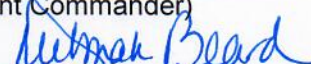
2022.thomasdivide.finance@firenet.gov



Incident Information



Check In Form (not NCFS)

INCIDENT OBJECTIVES	1. Incident Name Thomas Divide Complex	2. Date Prepared 3/30/22	3. Time Prepared 1700
4. Operational Period 03/31/22 0700 - 1900			
5. General Control Objectives For The Incident <u>Objectives for the Incident:</u> <ul style="list-style-type: none"> • Ensure protection of human life as top priority through the use of sound risk management decisions in all actions. • Provide for protection and minimize the loss of private property, infrastructure, State, County and Municipal facilities by using sound suppression tactics. • Maintain working relationships with federal, state, local, and Tribal government fire protection cooperators. Incorporate those personnel into operations when applicable. Work to maintain cooperative relationships with those agency representatives while providing for training opportunities to strengthen organizational capabilities. • Strongly consider long-term ecosystem health and the effects of suppression actions in the development of suppression strategies. Coordinate with the lead Resource Advisors (READ) to understand sensitive resource protection and management concerns, and develop repair guidelines for suppression damage. 			
<u>Control Objectives:</u> <ul style="list-style-type: none"> • Use appropriate resources and tactics to suppress, contain and control the fire. Suppression operations should focus on minimizing acres burned or impacted on State jurisdiction and/or private lands. • Utilize existing road/trail systems, changes in vegetation, fuels, weather, and natural barriers to minimize suppression-related impacts on the natural and culturally significant resources of the Eastern Band of Cherokee Indians. • Utilize Minimum Impact Suppression Tactics (MIST) to minimize natural resource impacts and mitigate for Wilderness values, with particular focus on trails, cultural resources, and water courses within Tribal and National Park Service lands 			
6. Weather forecast for Period A cold front will move east across western North Carolina Thursday morning. Lingering moisture will result in increasing afternoon clouds and isolated showers Thursday afternoon. High pressure will build in from the west Friday and settle over the region during the weekend.			
7. General Safety Message			
8. ATTACHMENTS (X IF ATTACHED) <input checked="" type="checkbox"/> Organization List - ICS 203 <input checked="" type="checkbox"/> Medical Plan - ICS 206 [] _____ <input checked="" type="checkbox"/> Division Assignment Lists - ICS 204 <input checked="" type="checkbox"/> Incident Map [] _____ <input checked="" type="checkbox"/> Communications Plan - ICS 205 [] Traffic Plan [] _____			
9. Prepared By (PSC2) Thomas Barrett 		Approved By (Incident Commander) /s/ Debbie Beard 	

ORGANIZATION ASSIGNMENT LIST		9. Operations Section	
1. Incident Name Thomas Divide Complex		Chief	Jeff Schardt /Aaron Gay (NC State)
		Planning	Tyler Van Ormer
		Divisions/Groups	
2. Date 03/31/2022		3. Time 1300	
		Division A	Jason Klawinsky
		Division C	Brenton Holt
4. Operational Period 0700-1900		Division E	Unstaffed
		Division GRSP Support	Greg Salansky
			Heath Thomas
5. Incident Commander and Staff			
Incident Commander	Debbie Beard		
Deputy	Michael Cheek	b.	
Safety Officer	Buddy Kelley/Larry Holsomback	Division	
Information Officer	Michelle Burnett	Division	
Information Officer(t)	Cathryn Dowd(v)	Division	
Liaison Officer	Michael Wright	Division	
		c.	
		Branch Director	
6. Agency Reps		Division	
Agency	Name	Division	
NPS	Alan Sumeriski		
NCFS	Greg Smith		
BIA	Reese Kerbow	d.	
NPS	Shawn Nagle		
7. Planning Section		Branch Director	
Chief	Thomas Barrett	Division	
Chief (t)	Chalice Keith	Division	
RESL	Melonie Sellers	Division	
SITL	Chris Evans	Division	
SCKN/DMOB		Division	
GISS	Ethan Robertson		
GISS (v)	Michael Torbett		
Computer Tech	Kevin Curry	d. Air Operations Branch	
Computer Tech (t)	Josh Skidmore	AOBD	Nick Holschbach
FBAN	Kelly Cagle	Helibase Mgr.	
IMET	Terry Lebo	ASGS	
		Air Attack Sup.	
		Air Attack Sup.	
		10. Finance Section	
8. Logistics Section		Chief	Jason Gillis
		Chief (t)	Lisa Brown
Chief	Tom Philipps	Time Unit/Cost(t)	Donna Bentley (v)
Chief (t)	David Moody		
Supply Unit		Personnel Time	
Facilities Unit (t)	John Dunlap	Equipment Time	
Ground Support Unit		Cost Unit	
Communication Unit	Jimmy Tignor	Procurement	
		Procurement	
Ordering Manager (t)	Vince Mullins	Comp/Claims	
Medical Unit	Tim Exline		
		Prepared by (Resource Unit Leader)	
		Melonie Sellers	



Thomas Divide Weather Forecast



FORECAST NO: 1
PREDICTION FOR: Thu 0700 to Mon 0700
SHIFT DATE: March 31, 2022
FORECAST ISSUED: 1800 March 30, 2022

NAME OF FIRE: Thomas Divide
UNIT: Great Smoky Mountains NP
Incident Meteorologist: Terry Lebo

WEATHER DISCUSSION

A cold front will move east across western North Carolina Thursday morning. Lingering moisture will result in increasing afternoon clouds and isolated showers Thursday afternoon. High pressure will build in from the west Friday and settle over the region during the weekend.

THURSDAY:

WEATHER: Morning clouds with a lingering shower possible. Some late morning clearing with clouds increasing in the afternoon. An isolated afternoon shower is possible.

MAX TEMPERATURES: 63-73°F
MIN HUMIDITY: 40-55%
CLOUD COVER @ 1500: 40%
CHANCE WETTING RAIN: 30% dropping to 10% by noon

20 FOOT WINDS: **Ridge Lines:** Southwest 15 to 20 mph with gusts around 30 mph.
Valleys: South-southwest 10 to 15 mph with gusts 20 to 25 mph.

MIXING HEIGHT: 4500 ft
LAL: 2 dropping to 1 around midday

THURSDAY NIGHT:

WEATHER: Partly cloudy
MIN TEMPERATURES: 35-45°F
MAX HUMIDITY: 65-85%
CHANCE WETTING RAIN: 0%
20 FOOT WINDS: **Ridge Lines:** West 5 to 10 mph with gusts around 15 mph.
Valleys: West-southwest 4 to 7 mph.

OUTLOOK

FRIDAY: Clear. Highs 53 to 63°F, lows 30 to 40°F. Min RH 25 to 35%. Max RH 55 to 75%. Winds from the northwest 7 to 10 mph with gusts 20 to 25 mph.

SATURDAY: Partly cloudy. Highs 57 to 67°F, lows 47 to 57°F. Min RH 30 to 40%. Max RH 75 to 95%. Winds from the southwest 7 to 10 mph with gusts 15 to 20 mph.

SUNDAY: Clear. Highs 54 to 64°F, lows 48 to 58°F. Min RH 25 to 40%. Max RH 70 to 90%. Winds from the north 5 to 10 mph.

FIRE BEHAVIOR FORECAST

FORECAST NUMBER: #2	TYPE OF FIRE: Wildland
FIRE NAME: Thomas Divide	OPERATIONAL PERIOD: 3/31/2022 Day Shift
DATE ISSUED: 3/30/2022	TIME ISSUED: 1900
UNT: Great Smokies NP / NCFS – Swain County	WRITTEN: <i>Kelly Cagle</i> – Fire Behavior Analyst

FUEL ASSUMPTIONS: The primary fuel model found on the Thomas Divide Complex is Fuel Model 9 (hardwood litter). There are also areas of rhododendron and mountain laurel that could be modeled in a shrub model – such as Shrub Model 3 or 8. Fire spread has been primarily driven by low fuel moistures in the 1 and 10 hour size class that are pushed by wind. 100 hour and 1000 hour fuels are either not available or are only moderately available to burn. Brush models will contribute to fire intensity when situated on steep slopes or when surface fire intensity is great enough to ignite green vegetation.

WEATHER SUMMARY: Rain early in the day gives way to partial clearing. There is a chance of a rain shower late in the day as well. **See Fire Weather Forecast for Specifics!**

General Fire Behavior Forecast: Inside the fire footprint - expect isolated smoldering to continue today. Active flame is not expected as fuels are wet. Fuels could begin to dry somewhat, but forecasted weather does not indicate that significant drying will occur today. Minimal fire activity is expected.

Conditions that Cause Fire Control Concerns in the Southern Apps:
 RH below 30% Wind speed > 20 mph BI >90% percentile KBDI > 350

Specific:

Cooper’s Creek

Div Alpha/Charlie- Expect minimal fire behavior today inside the fire footprint. There are a handful of isolated heavy’s that may continue to smolder, but that activity will be minimal. Fine fuels are too damp to readily carry fire.

Stone Pile – Expect minimal fire behavior inside the fire footprint. An isolated smoke or two may be visible, but that activity is expected to be minor. Fine fuels are too damp to readily carry fire.

Initial Attack – Wet fuels across the area should reduce fire starts today. If IA occurs, expect very minimal fire behavior – smoldering with little in the way of fire spread or growth.

Fine fuel moisture today is: 12-15%	Rates of Spread in Litter fuels: 1 to 3 chains/hour or <
Probability of Ignition today: 15%	Rates of Spread in Brush: 1 to 3 chains/hour or <
Spotting Distance Today: Low	Flame Lengths: 1 to 2 feet or <

AIR OPERATIONS: Skies should clear early, however it will be breezy during the day. Likely not a threat to aviation activities but could provide for a bumpy ride.

FIRE BEHAVIOR SAFETY: With wet fuels, fire behavior is not likely to pose a threat to you today. Effects from a wind event might however. Detached limbs and windthrown trees that are undetected are likely to be present in work areas today.

DIVISION ASSIGNMENT LIST			1. Branch		2. Division A		
3. Incident Name Thomas Divide Complex			4. Operational Period Date: 03/31/2022 Time: 0700/1900				
5. Operations Personnel							
Operations Chief		Jeff Schardt Aaron Gay (NC State)		Division Supervisor		Jason Klawinsky	
Operations Chief		Tyler Van Ormer					
Safety Officers							
6. Resources Assigned this Period							
Strike Team/Task Force/ Resource Designator		Leader / Name / Designator		Num. Per.	Trans. Needed	Drop Off PT./Time	Pick Up PT./Time
HC2IA PatRick 1		Josh Childs		20			
HC2IA PatRick 2		Levi Miller		20			
LEO (Traffic mitigation, EMT)							
7. Control Operations Cold Trail and mop-up fire's edge North of Thomas Divide Trail. Construct fire line where needed, utilizing MIST Tactics. Prep Indian Motor Trail to Camp site #51 for contingency line GPS Fire edge							
8. Special Instructions Utilize caution and appropriate tactic on wet roads, fire lines, trails, and slopes to minimize adverse impacts to personnel, property, and equipment							
9. Division/Group Communication Summary							
Function	Frequency TX	MODE	TX CG		MODE	Frequency RX	RX CG
Tac D9 Tac2	131.8		131.8			159.375	159.375
Command Cowee Repeater	88.5		114.8			151.175	159.420
Air to Air	123.1250					123.1250	
Air to Ground	166.6125	A				166.6125	
Prepared by (RESL Melonie Sellers		Approved by (PSC2.) Thomas Barrett			Date 03/30/2022		Time 1500

DIVISION ASSIGNMENT LIST			1. Branch		2. Division C		
3. Incident Name Thomas Divide Complex			4. Operational Period Date: 03/31/2022 Time: 0700/1900				
5. Operations Personnel							
Operations Chief		Jeff Scardt Aaron Gay (NC State)		Division Supervisor		Brenton Holt	
Operations Chief		Tyler Van Ormer					
Safety Officer							
6. Resources Assigned this Period							
Strike Team/Task Force/ Resource Designator		Leader / Name / Designator		Num. Per.	Trans. Needed	Drop Off PT./Time	Pick Up PT./Time
T2 Sawtooth Module		Colton Bates		10			
ENG6 NCF5 E236		Russell Choate		1			
ENG6 NCF5 E165		Kristen Kelley		1			
ENG6 BIA 2681		Lawrence Kioyayesva		4			
7. Control Operations Patrol and maintain structure protection in Cooper Creek Mop up hotspots along the fire's edge. GPS Fire edge							
8. Special Instructions Utilize caution and appropriate tactic on wet roads, fire lines, trails, and slopes to minimize adverse impacts to personnel, property, and equipment							
9. Division/Group Communication Summary							
Function	Frequency TX	MODE	TX CG		MODE	Frequency RX	RX CG
Tac D9 Tac2	131.8		131.8			159.375	159.375
Command Cowee Repeater	88.5		114.8			151.175	159.420
Air to Air	123.1250					123.1250	
Air to Ground	166.6125	A			A	166.6125	
Prepared by (RESL) Melonie Sellers		Approved by (PSC2) Thomas Barrett			Date 03/30/2022		Time 1500

DIVISION ASSIGNMENT LIST			1. Branch		2. Division E		
3. Incident Name Thomas Divide Complex			4. Operational Period Date: 03/31/2022 Time: 0700/1900				
5. Operations Personnel							
Operations Chief		Jeff Schardt Aaron Gay (NC State)		Division Supervisor			
Operations Chief Planning		Tyler Van Ormer		Air Attack Supervisor			
Safety Officer							
6. Resources Assigned this Period							
Strike Team/Task Force/ Resource Designator		Leader / Name / Designator		Num. Per.	Trans. Needed	Drop Off PT./Time	Pick Up PT./Time
UNSTAFFED							
7. Control Operations							
8. Special Instructions							
9. Division/Group Communication Summary							
Function	Frequency-TX	MODE	TX CG		MODE	Frequency RX	RX-CG
Tac D9 Tac2	131.8		131.8			159.375	159.375
Command Cowee Repeater	88.5		114.8			151.175	159.420
Air to Air	123.1250					123.1250	
Air to Ground	166.6125	A				166.6125	
Prepared by RESL Melonie Sellers		Approved by (Planning Sect. Ch.) Thomas Barrett			Date 03/30/2022		Time 1500

DIVISION ASSIGNMENT LIST			1. Branch		2. Division GRSP Support		
3. Incident Name Thomas Divide Complex			4. Operational Period Date: 03/31/2022 Time: 0700/1900				
5. Operations Personnel							
Operations Chief		Jeff Schardt Aaron Gay (NC State)		Division Supervisor		Greg Salansky Heath Thomas	
Operations Chief		Tyler Van Ormer					
Safety Officer							
6. Resources Assigned this Period							
Strike Team/Task Force/ Resource Designator		Leader / Name / Designator		Num. Per.	Trans. Needed	Drop Off PT./Time	Pick Up PT./Time
T2 GRSM WFM		Jordan Black		10			
HC2IA PatRick 3		Benjamin Beard		20			
7. Control Operations Support park incident operations as requested. Ensure resources are cloned with Park frequencies.							
8. Special Instructions Utilize caution and appropriate tactic on wet roads, fire lines, trails, and slopes to minimize adverse impacts to personnel, property, and equipment							
9. Division/Group Communication Summary							
Function	Frequency TX	MODE	TX CG		MODE	Frequency RX	RX CG
Tac D9 Tac2	131.8		131.8			159.375	159.375
Command Cowee Repeater	88.5		114.8			151.175	159.420
Air to Ground	166.6125	A				166.6125	
Prepared by (RESL) Melonie Sellers		Approved by (PSC2) Thomas Barrett			Date 03/30/2022		Time 1500

1. BRANCH	2. DIVISION/GROUP Public Safety	ASSIGNMENT LIST
-----------	---	------------------------

THOMAS DIVIDE COMPLEX	4. OPERATIONAL PERIOD 0800-2000	3/31/2022
------------------------------	---	------------------

5. OPERATIONS PERSONNEL

Operations Chief: _____ Division/Group Supervisor: James Latendresse
 Branch Director: _____ Air Attack Supervisor: _____

6. RESOURCES ASSIGNED THIS PERIOD

STRIKE TEAM/TASK FORCE RESOURCE DESIGNATOR	LEADER	NUMBER PERSONS	REPORTING LOCATION	SPECIAL EQUIPMENT / SUPPLIES	COMMENTS
Oconaluftee Emergency Response	Miles Auger	2	LUFTEE RS		
Deep Creek Trailhead 441	Lydia Williams	0	LUFTEE RS		
Thomas Divide Trailhead	Greg Grieco	0	LUFTEE RS		
Kanati Trailhead	Lee Mask	0	LUFTEE RS		
Newton Bald Trailhead	Bethany Hicks	0	LUFTEE RS		
Mingus Creek Trailhead	Chris Plourde	0	LUFTEE RS		
Deep Creek Trailhead	C. McMahan	0	LUFTEE RS		

OPERATION TASKS/Control Operations

- Maintain trailhead blocks on 441 at Deep Creek trail, Thomas Divide, Kanati, Newton Bald, Mingus Creek Trail, and the Deep Creek Trail in Deep Creek. (Deep Creek on 441, Thomas Divide, and Kanati are behind the closed gate on 441. If 441 remains closed those resources will be shifted elsewhere).
- Maintain emergency responses for the South District of GRSM.
- Assist TN Rangers with Emergency response to the forecasted wind event while maintaining NC emergency response capabilities.

SPECIAL INSTRUCTIONS
 Deep Creek Trail Head and Thomas Divide Trail blocks will operate on the Dome Repeater all others will operate on NC Viper. The Kanati trail head does not have reliable radio communications and will have a satellite phone issued.

DIVISION/GROUP COMMUNICATIONS SUMMARY

FUNCTION		CHAN.	FUNCTION		CHAN.
OPS	LOCAL	LOCAL RX/TX 167.1500		LOCAL	
	REPEAT	DOME		REPEAT	

PREPARED BY (RESOURCES UNIT LEADER) <i>/s/</i>	APPROVED BY (INCIDENT COMMANDER) <i>/s/</i>	DATE 3/29/2022	TIME 1000
---	--	-------------------	--------------

SAFETY MESSAGE

INCIDENT: Thomas Divide

DATE: March 31, 2022

Major Hazards and Risks:

Powerlines: High winds and fire stressed trees are major cause of down power lines. Always treat downed power lines as energized. If encountering down power lines: contact power company, communicate the location to all personnel in the area, identify the entire extent of the hazard, flag off the area and deny any access, delay firefighting actions in area until danger is neutralized.

Driving: Roads slick from rain, slow down, do not use cruise control when raining. Watch for pedestrians, the Park is a big tourist attraction. You're traveling from four lane roads to city roads to rough surface roads to driveways and two track roads, take it slow and careful, let your driving actions and speed match the type of road you're traveling. Watch for wildlife especially in the early morning and late evenings. Always wear your seatbelt, use headlights, keep your windshields and other glass clear and if you have to talk on your phone or radio, pull off and stop.

General Hazards: Steep rough terrain, limited vehicle access to fire located inside National Park, Narrow single lane roads accessing private property. Urban interface with private homes and farms. Wildlife and domesticated animals in area. UTV use, (wear your agency approved head protection) on long dusty or muddy roads, trails, or fire lines, helicopter flights/bucket drops, etc., etc. Make sure all personnel receive a thorough safety briefing before engaging in operational activities.

REMEMBER

Slow and Steady, Safe and Sure.

Prepared by: Larry Holsomback, Buddy Kelley


INCIDENT SAFETY ANALYSIS 215a

215A Thomas Divide Complex - Thursday, March 31, 2022

8. Location	9. Hazard	6. Control or Abatement Action (Engineering, Administrative, PPE, Avoidance, Education, etc)
DIVS ALL	Helicopter Operations	<ul style="list-style-type: none"> ~ Stay clear of all bucket drops when suppression actions are in place and allow 1 minute prior to re-entry. ~ Monitor A-G communications. ~ Follow aviation safety guidelines in IRPG and IHOG.
DIVS ALL	Severe Weather	<ul style="list-style-type: none"> ~ Review and follow Thunderstorm Safety guidelines in IRPG page 21. ~ Stay informed on Weather Forecasts and Warnings. ~ Establish "Trigger Points" to withdraw, and ensure all know rally site. ~ Use "Risk Management" process to determine retreat criteria and actions. ~ Carry rain gear and extra food and water if weather limits retreat to ICP.
DIVS ALL	Hazard Trees	<ul style="list-style-type: none"> ~ Follow "Hazard Tree Safety" guidelines, IRPG page 22. ~ Post lookouts, or use a spotter in mop-up areas with personnel. ~ Don't park vehicles or take breaks in high concentrations of hazard trees. ~ Establish trigger points for disengagement during high wind events. ~ Remember that the hazard zone extends a minimum of 2 1/2 tree heights.
DIVS C, E & IA	Structure Protection & HAZMAT	<ul style="list-style-type: none"> ~ Review "Wildland Urban Interface" Watch outs, IRPG page 12. ~ Use "Structure Assessment" checklist, IRPG pages 12-16. ~ Follow "HAZMAT Incident Operations" on pages 36 in IRPG.
DIVS ALL	Steep Terrain & Rolling Debris	<ul style="list-style-type: none"> ~ Maintain 8'-10' spacing when working & walking. ~ Don't work above any personnel. ~ Be on the lookout for rolling rocks, debris, or burning material. ~ Evaluate necessity to send personnel in areas with limited access. ~ Post lookouts (IRPG pg 7).
DIVS ALL	Driving & Traffic	<ul style="list-style-type: none"> ~ Practice "Defensive Driving" techniques traveling on all roads and city streets. ~ Very narrow roads, use caution, especially on curves. ~ Use spotters when backing. ~ Yield to pedestrians and bicycles. ~ Observe posted speed limits. ~ Use the 3 second rule for following distance when driving. ~ Use chock blocks, turn wheels into hill. ~ Avoid distractions (eating, cell phones, radio). ~ Ensure that windshields are kept clean of dust and bugs.
DIVS ALL	Chain Saw Operations	<ul style="list-style-type: none"> ~ Follow "Hazard Tree Safety" guidelines, IRPG page 22 ~ Look up, Look down, Look around for hazard tree indicators. ~ Only fell and buck trees within your expertise, and training. ~ Follow "Procedural Felling Operations" on page 79 in IRPG. ~ Do not fall trees during high wind events. ~ Ensure proper use of all required PPE.
DIVS ALL	Vehicle Operations in Inclement Weather	<ul style="list-style-type: none"> ~ Be alert for potential muddy and slick road surfaces. ~ Avoid parking on soft shoulders along roads. ~ Stay off secondary roads in wet conditions. ~ Increase following distance on slick road surfaces. ~ Send a scout to evaluate roads and work area prior to personnel engagement.
DIVS ALL	ATV/UTV use	<ul style="list-style-type: none"> ~ Ensure equipment is inspected and safe to use. ~ Operator follows their Agency Guidelines. ~ Ensure operator is trained and certified to operate. ~ Ensure operator has proper PPE according to the Redbook and/or RMA. ~ Question if it is mission critical.
DIVS ALL	Mop-up & Rehab	<ul style="list-style-type: none"> ~ Do not work above or below personnel during rehab/mop-up operations. ~ Alert crew personnel of rolling debris by yelling to affected individuals. ~ Position debris that could roll vertically on slope. ~ Wear eye protection.
DIVS ALL	Injury & Medical Emergency	<ul style="list-style-type: none"> ~ Assist injured employee appropriate medical care. ~ Use EMT's on Division for initial care. ~ Follow medical protocol as outlined in ICS-206 & IRPG Pages 118 & 119.
DIVS ALL	Communications	<ul style="list-style-type: none"> ~ Maintain communication with aviation resources, and suppression organization. ~ Ensure all know frequency and protocol for contacting resources. ~ Utilize the ICS 205. ~ Utilize human repeaters when working in dead spots.

MEDICAL PLAN	1. INCIDENT NAME THOMAS DIVIDE COMPLEX	2. DATE PREPARED 3/30/22	3. TIME PREPARED 0900	4. OPERATIONAL PERIOD 3/31/22 0700-2000							
	5. INCIDENT MEDICAL AID STATIONS										
MEDICAL AID STATIONS		LOCATION			PARAMEDICS						
					YES	NO					
Deep Creek Ranger Station		1912 East Deep Creek Road, Bryson City, NC				X					
ICP		1139 US 19 Cherokee, NC 28719			X						
6. TRANSPORTATION											
A. AMBULANCE SERVICES											
NAME		ADDRESS		PHONE		LEVELS OF SERVICE					
						ALS	BLS				
Swain County EMS		155 Slopes St, Bryson City, NC		Dispatched through 700 or 911		X					
MAMA Medical Helicopter		Asheville/Franklin		Dispatched through 700 or 911		X					
Life Star Medical Helicopter		UT Knoxville, TN		Dispatched through 700 or 911		X					
B. INCIDENT AMBULANCES											
NAME		LOCATION			PARAMEDICS						
					YES	NO					
7. HOSPITALS											
NAME		ADDRESS		TRAVEL TIME		TRAUMA CENTER		HELIPAD		BURN CENTER	
				AIR	GRND	LEVEL		YES	NO	YES	NO
Mission Hospital		509 Biltmore Ave, Asheville, NC 828-213-1111		TBD	1:05	2		X		X	
Harris Regional Hospital		68 Hospital Rd, Sylva, NC 828-586-7000		N/A	0:35	N/A		X			X
University of TN Medical Center		1924 Alcoa Hwy, Knoxville, TN 865-305-9000		TBD	2:15	1		X		X	
Swain County Hospital		45 Plateau St, Bryson City, NC 828-488-2155		N/A	30	N/A		X			X
8. MEDICAL EMERGENCY PROCEDURES											
Utilizing 911, responder broadcasts exact location; perform scene size-up/assess safety issues. Broadcast mechanism of injury & # of patients Via 8 Line. Please contact Tim Exline MEDL 727-243-4144 If any IWI's occur as time allows. Patient care takes priority.											
Maintain proper PPE during EMS contact.											
Use standard park procedures through dispatch if air transport is required											
Park EMTs follow standard EMS protocols and procedures per FM51.											
206 ICS		9. PREPARED BY (MEDL) <i>Tim Exline</i>				10. REVIEWED BY (Safety Officer) <i>Larry Holsoeback</i>					

INCIDENT RADIO COMMUNICATIONS PLAN (ICS 205)

1. Incident Name: Thomas Divide Complex	2. Date/Time Prepared: Date: 03/30/2022 Time: 1800	3. Operational Period: Date From: 03/31/2022 Time From: 0700	Date To: 03/31/2022 Time To: 2000							
4. Basic Radio Channel Use:										
Zone Grp.	Ch #	Function	Channel Name/Trunked Radio System Talkgroup	Assignment	RX Freq N or W	RX Tone/NAC	TX Freq N or W	TX Tone/NAC	Mode (A, D, or M)	Remarks
	13		D-9 Cowee		151.175	159.420	88.5	114.8		
	5		D-9 Tac 1		151.280	151.280	131.8	131.8		Secondary Tac intermittent use only
	6		D-9 Tac 2		159.375	159.375	131.8	131.8		Primary Tac
	14		Air to Ground		166.6125		166.6125		A	
5. Special Instructions:										
6. Prepared by (Communications Unit Leader): Name: David Moody LSC										Signature: 
ICS 205								IAP Page _____		Date/Time: 03/30/2022 @2000

Finance Message

For Gold Team members and contract resources only

Take a photo of a signed hard copy shift ticket of CTR. Make sure your photos are legible and the supervisor's signature are visible. Include your phone number in the comments should the finance section have questions. Electronic CTRs and Shift tickets are acceptable as well. Send all shift tickets and CTRs to the finance email below.

- Document hazardous pay with an explanation in the comments on the CTR.
- Remember to show a break.
- If you are an AD, please send your casual hire form to the finance email below.
- Contract resources need to send a copy of your resource order and a copy of your contract to the email below.

Please label all emails to finance with your resource number in the subject line.

2022.thomasdivide.finance@firenet.gov

Feel free to give us a call if you have questions or concerns.

Donna Bentley TIME (706)-474-3216

or

Jason Gillis FSC2 (912) 314-9233

Human Resource Message

The mission of the Southern Area Gold Team is to safely, effectively and efficiently manage the Thomas Divide Fire by maintaining a team of skilled and productive personnel. During this incident we will strive to successfully complete our mission and achieve our objectives while creating a positive drug and alcohol free work environment for all assigned incident personnel. Consumption of drugs that alter decision making ability, such as marijuana and alcohol, is prohibited while assigned to the incident.

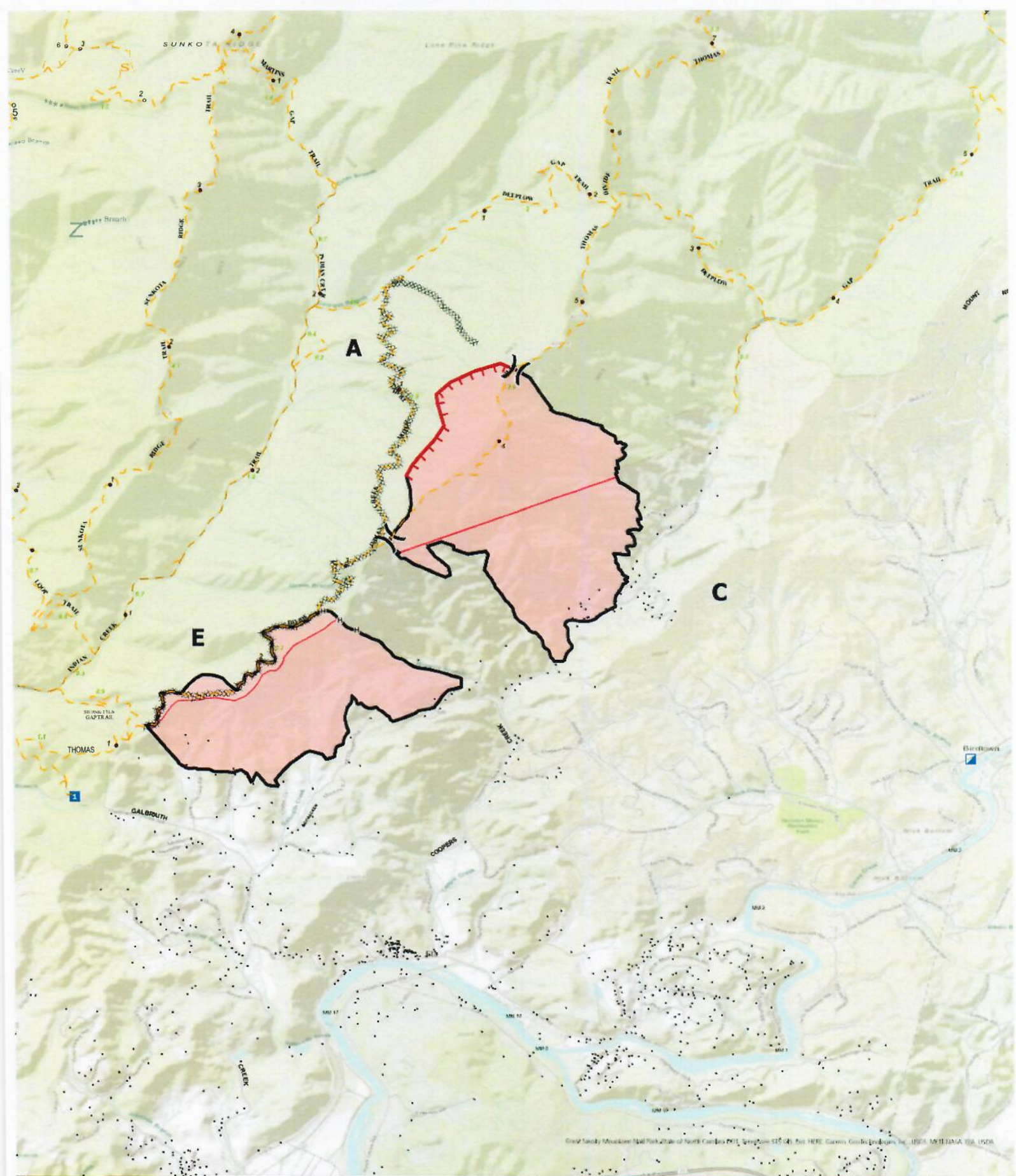
The Gold Team fully supports EEO and will not tolerate sexual harassment or any form of discrimination!

All inappropriate behavior will be dealt with promptly. Disciplinary action and reporting to an individual's home unit will be initiated as necessary.

Please report any incidents of inappropriate behavior to your supervisor, Michael Cheek or myself immediately.

Deborah Beard, Incident Commander





Thomas Divide Complex

TN-GSP-000131
 March 31, 2022
 Day Shift

- | | | |
|--|---|---|
|  |  |  |
|  |  |  |
|  |  |  |
| |  |  |
| |  |  |

N




0 0.25 0.5 Miles

UNIT LOG	1. Incident Name	2. Date Prepared	3. Time Prepared
4. Unit Name/Designators	5. Unit Leader (Name and Position)		6. Operational Period
7. Personnel Roster Assigned			
Name	ICS Position	Home Base	
8. Activity Log			
Time	Major Events		
9. Prepared by (Name and Position)			

MEDICAL PLAN (ICS 206 WF)

Controlled Unclassified Information//Basic

Medical Incident Report					
FOR A NON-EMERGENCY INCIDENT, WORK THROUGH CHAIN OF COMMAND TO REPORT AND TRANSPORT INJURED PERSONNEL AS NECESSARY.					
FOR A MEDICAL EMERGENCY: IDENTIFY ON SCENE INCIDENT COMMANDER BY NAME AND POSITION AND ANNOUNCE "MEDICAL EMERGENCY" TO INITIATE RESPONSE FROM IMT COMMUNICATIONS/DISPATCH.					
Use the following items to communicate situation to communications/dispatch.					
1. CONTACT COMMUNICATIONS / DISPATCH (Verify correct frequency prior to starting report) <i>Ex: "Communications, Div. Alpha. Stand-by for Emergency Traffic."</i>					
2. INCIDENT STATUS: Provide incident summary (including number of patients) and command structure. <i>Ex: "Communications, I have a Red priority patient, unconscious, struck by a falling tree. Requesting air ambulance to Forest Road 1 at (Lat./Long.) This will be the Trout Meadow Medical, IC is TFLD Jones. EMT Smith is providing medical care."</i>					
Severity of Emergency / Transport Priority	<input type="checkbox"/> RED / PRIORITY 1 Life or limb threatening injury or illness. Evacuation need is IMMEDIATE <i>Ex: Unconscious, difficulty breathing, bleeding severely, 2° – 3° burns more than 4 palm sizes, heat stroke, disoriented.</i> <input type="checkbox"/> YELLOW / PRIORITY 2 Serious Injury or illness. Evacuation may be DELAYED if necessary. <i>Ex: Significant trauma, unable to walk, 2° – 3° burns not more than 1-3 palm sizes.</i> <input type="checkbox"/> GREEN / PRIORITY 3 Minor Injury or illness. Non-Emergency transport <i>Ex: Sprains, strains, minor heat-related illness.</i>				
Nature of Injury or Illness & Mechanism of Injury			<i>Brief Summary of Injury or Illness (Ex: Unconscious, Struck by Falling Tree)</i>		
Transport Request			<i>Air Ambulance / Short Haul/Hoist Ground Ambulance / Other</i>		
Patient Location	<i>Descriptive Location & Lat. / Long. (WGS84)</i>				
Incident Name	<i>Geographic Name + "Medical" (Ex: Trout Meadow Medical)</i>				
On-Scene Incident Commander	<i>Name of on-scene IC of Incident within an Incident (Ex: TFLD Jones)</i>				
Patient Care	<i>Name of Care Provider (Ex: EMT Smith)</i>				
3. INITIAL PATIENT ASSESSMENT: Complete this section for each patient as applicable (start with the most severe patient)					
Patient Assessment: See IRPG page 106					
Treatment:					
4. TRANSPORT PLAN:					
Evacuation Location (if different): (Descriptive Location (drop point, intersection, etc.) or Lat. / Long.) Patient's ETA to Evacuation Location:					
Helispot / Extraction Site Size and Hazards:					
5. ADDITIONAL RESOURCES / EQUIPMENT NEEDS:					
<i>Example: Paramedic/EMT, Crews, Immobilization Devices, AED, Oxygen, Trauma Bag, IV/Fluid(s), Splints, Rope rescue, Wheeled litter, HAZMAT, Extrication</i>					
6. COMMUNICATIONS: Identify State Air/Ground EMS Frequencies and Hospital Contacts as applicable					
Function	Channel Name/Number	Receive (RX)	Tone/NAC *	Transmit (TX)	Tone/NAC *
COMMAND					
AIR-TO-GRND					
TACTICAL					
7. CONTINGENCY: Considerations: If primary options fail, what actions can be implemented in conjunction with primary evacuation method? Be thinking ahead.					
8. ADDITIONAL INFORMATION: Updates/Changes, etc.					
REMEMBER: Confirm ETA's of resources ordered. Act according to your level of training. Be Alert. Keep Calm. Think Clearly. Act Decisively.					