

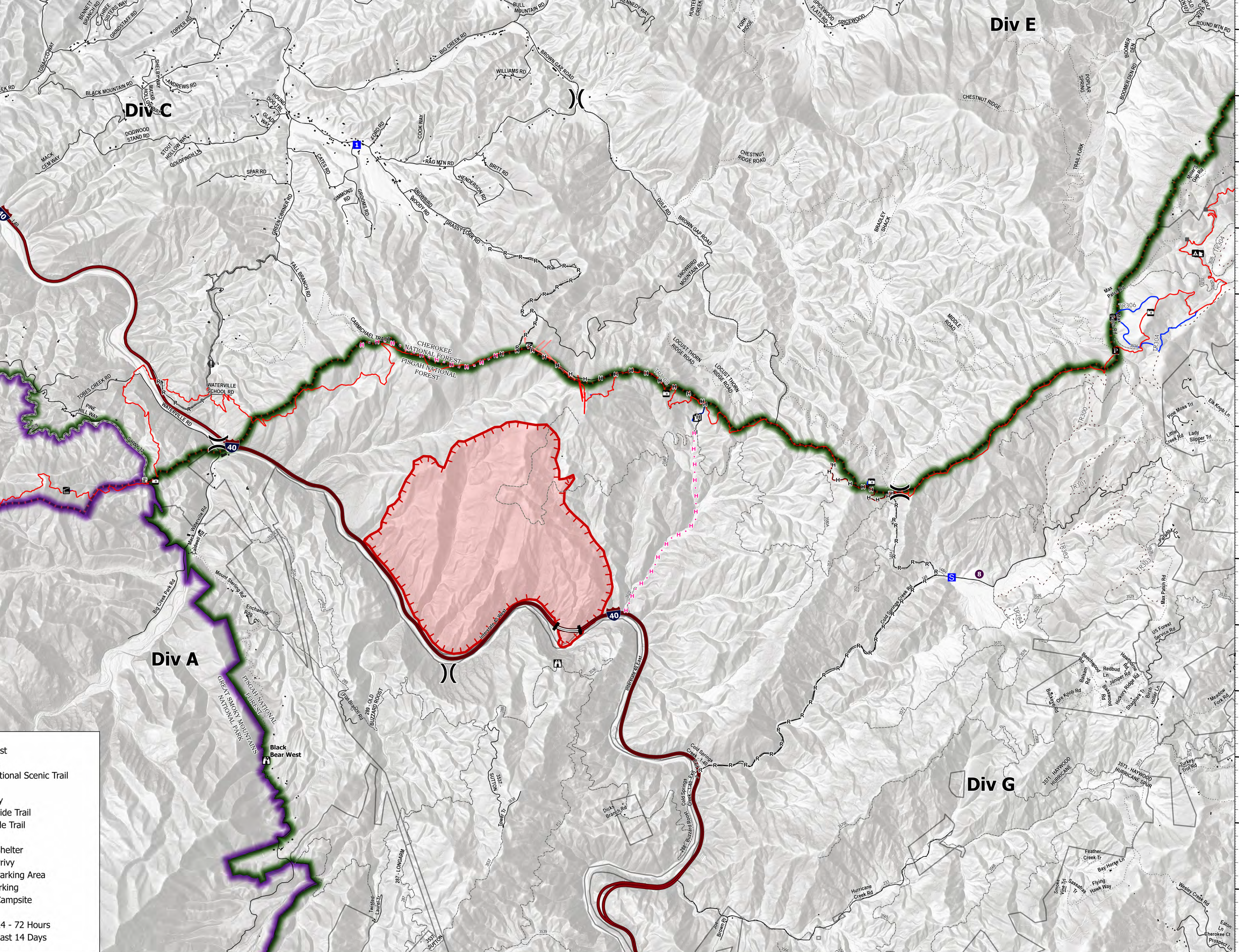
83°10'W 83°9.5'W 83°9'W 83°8.5'W 83°8'W 83°7.5'W 83°7'W 83°6.5'W 83°6.01'W 83°5.5'W 83°5'W 83°4.5'W 83°4'W 83°3.5'W 83°3'W 83°2.5'W 83°2'W 83°1.5'W 83°1'W 83°0.5'W 83°W 82°59.5'W 82°59'W 82°58.51'W 82°58'W 82°57.5'W 82°57'W

Retardant Drop

Black Bear
NC-NCF-230334
11/19/2023

1,740 acres at 11/19/2023 1258

0 0.25 0.5 1
Miles



- | | |
|-------------------------------|--|
| Wildfire Daily Fire Perimeter | National Forest |
| Uncontained Fire Edge | National Park |
| Helispot | Appalachian National Scenic Trail Features |
| Division Break | A.T. Treadway |
| Drop Point | Official A.T. Side Trail |
| Staging Area | Additional Side Trail |
| Lookout | Vistas |
| Value at Risk | Official A.T. Shelter |
| Completed Hand Line | Official A.T. Privy |
| Completed Road as Line | Official A.T. Parking Area |
| Planned Hand Line | Additional Parking |
| Access or Improved Road | Official A.T. Campsite |
| Interstates | Bridges |
| Secondary Routes | Drop Lines: 24 - 72 Hours |
| Unpaved Routes | Drop Lines: Last 14 Days |
| Tunnel | |

83°10'W 83°9.5'W 83°9'W 83°8.5'W 83°8'W 83°7.5'W 83°7'W 83°6.5'W 83°6.01'W 83°5.5'W 83°5'W 83°4.5'W 83°4'W 83°3.5'W 83°3'W 83°2.5'W 83°2'W 83°1.5'W 83°1'W 83°0.5'W 83°W 82°59.5'W 82°59'W 82°58.51'W 82°58'W 82°57.5'W 82°57'W