

83°10.5'W 83°10'W 83°9.5'W 83°9'W 83°8.5'W 83°8'W 83°7.5'W 83°7'W 83°6.5'W 83°6.01'W 83°5.5'W 83°5'W 83°4.5'W 83°4'W 83°3.5'W 83°3'W 83°2.5'W 83°2'W 83°1.5'W 83°1'W 83°0.5'W 83°W 82°59.5'W 82°59'W 82°58.51'W 82°58'W 82°57.5'W 82°57'W

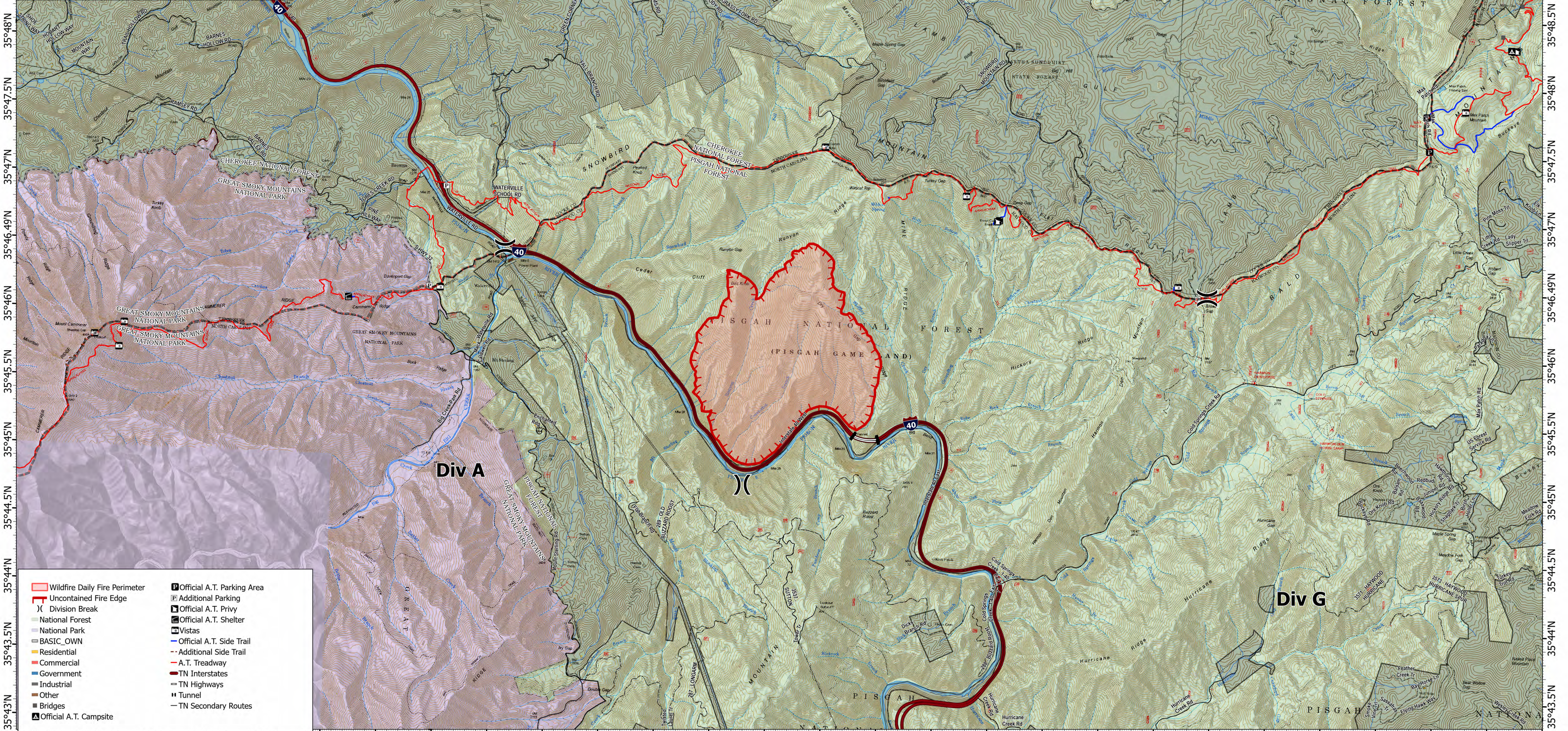
Operations

Black Bear

NC-NCF-230344

11/18/2023

1,193 acres at 11/17/2023 1030



83°10'W 83°9.5'W 83°9'W 83°8.5'W 83°8'W 83°7.5'W 83°7'W 83°6.5'W 83°6.01'W 83°5.5'W 83°5'W 83°4.5'W 83°4'W 83°3.5'W 83°3'W 83°2.5'W 83°2'W 83°1.5'W 83°1'W 83°0.5'W 83°W 82°59.5'W 82°59'W 82°58.51'W 82°58'W 82°57.5'W 82°57'W 82°56.5'W

- Wildfire Daily Fire Perimeter
- Uncontained Fire Edge
- Division Break
- National Forest
- National Park
- BASIC_OWN
- Residential
- Commercial
- Government
- Industrial
- Other
- Bridges
- Official A.T. Campsite
- Official A.T. Parking Area
- Additional Parking
- Official A.T. Privy
- Official A.T. Shelter
- Vistas
- Official A.T. Side Trail
- Additional Side Trail
- A.T. Treadway
- TN Interstates
- TN Highways
- Tunnel
- TN Secondary Routes