

83°10'W 83°9.5'W 83°9'W 83°8.5'W 83°8'W 83°7.5'W 83°7'W 83°6.5'W 83°6.01'W 83°5.5'W 83°5'W 83°4.5'W 83°4'W 83°3.5'W 83°3'W 83°2.5'W 83°2'W 83°1.5'W 83°1'W 83°0.5'W 83°W 82°59.5'W 82°59'W 82°58.51'W 82°58'W 82°57.5'W 82°57'W

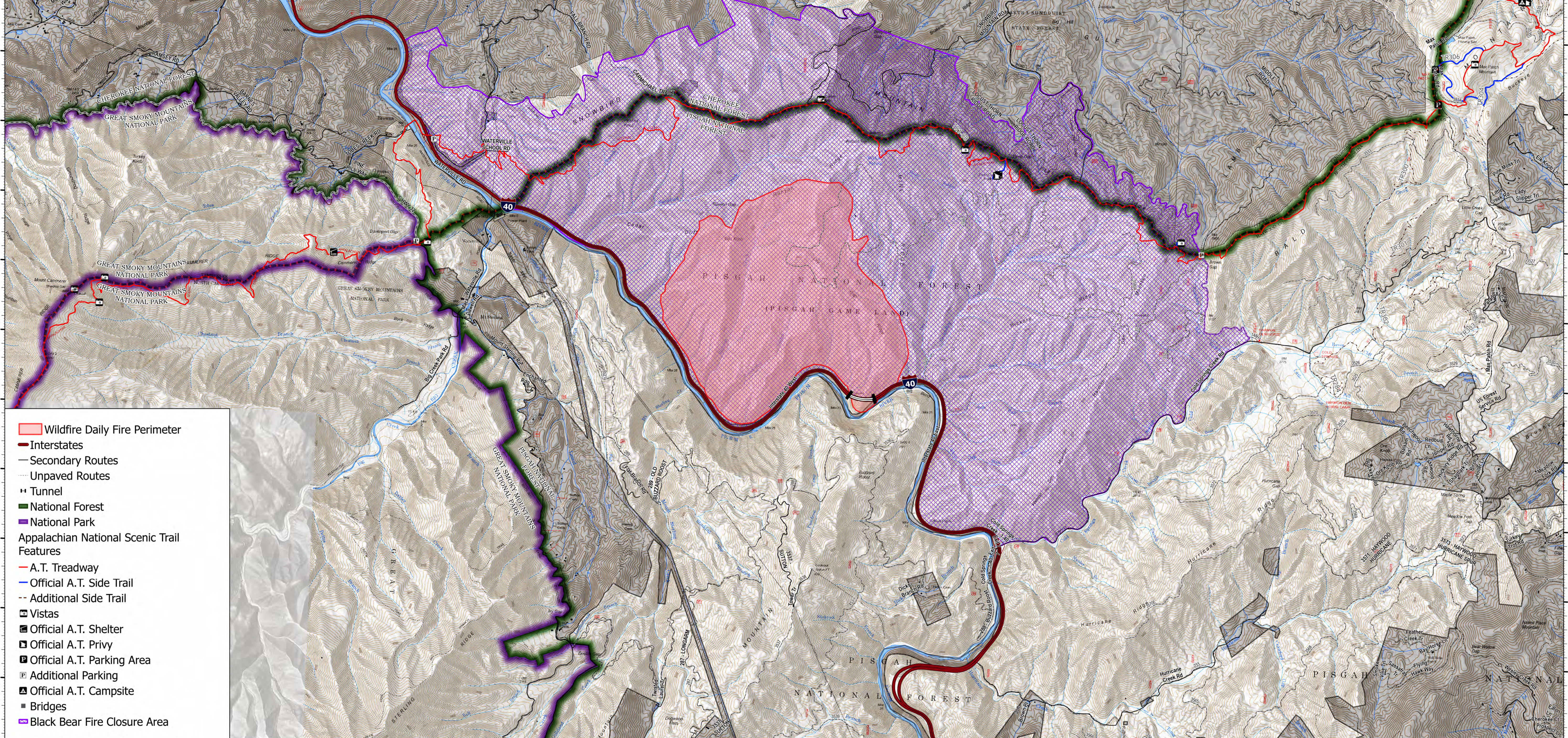
Closure

Black Bear

NC-NCF-230334

11/19/2023

1,720 acres at 11/18/2023 1300



- Wildfire Daily Fire Perimeter
- Interstates
- Secondary Routes
- Unpaved Routes
- Tunnel
- National Forest
- National Park
- Appalachian National Scenic Trail Features**
- A.T. Treadway
- Official A.T. Side Trail
- Additional Side Trail
- Vistas
- Official A.T. Shelter
- Official A.T. Privy
- Official A.T. Parking Area
- Additional Parking
- Official A.T. Campsite
- Bridges
- Black Bear Fire Closure Area

83°10'W 83°9.5'W 83°9'W 83°8.5'W 83°8'W 83°7.5'W 83°7'W 83°6.5'W 83°6.01'W 83°5.5'W 83°5'W 83°4.5'W 83°4'W 83°3.5'W 83°3'W 83°2.5'W 83°2'W 83°1.5'W 83°1'W 83°0.5'W 83°W 82°59.5'W 82°59'W 82°58.51'W 82°58'W 82°57.5'W 82°57'W