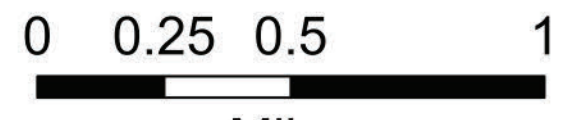


83°10'W 83°9.5'W 83°9'W 83°8.5'W 83°8'W 83°7.5'W 83°7'W 83°6.5'W 83°6.01'W 83°5.5'W 83°5'W 83°4.5'W 83°4'W 83°3.5'W 83°3'W 83°2.5'W 83°2'W 83°1.5'W 83°1'W 83°0.5'W 83°W 82°59.5'W 82°59'W 82°58.51'W 82°58'W 82°57.5'W 82°57'W

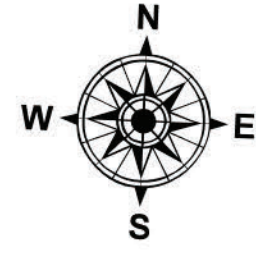
# Operations

Black Bear  
NC-NCF-230334  
11/20/2023

1,740 acres at 11/19/2023 1258



Miles

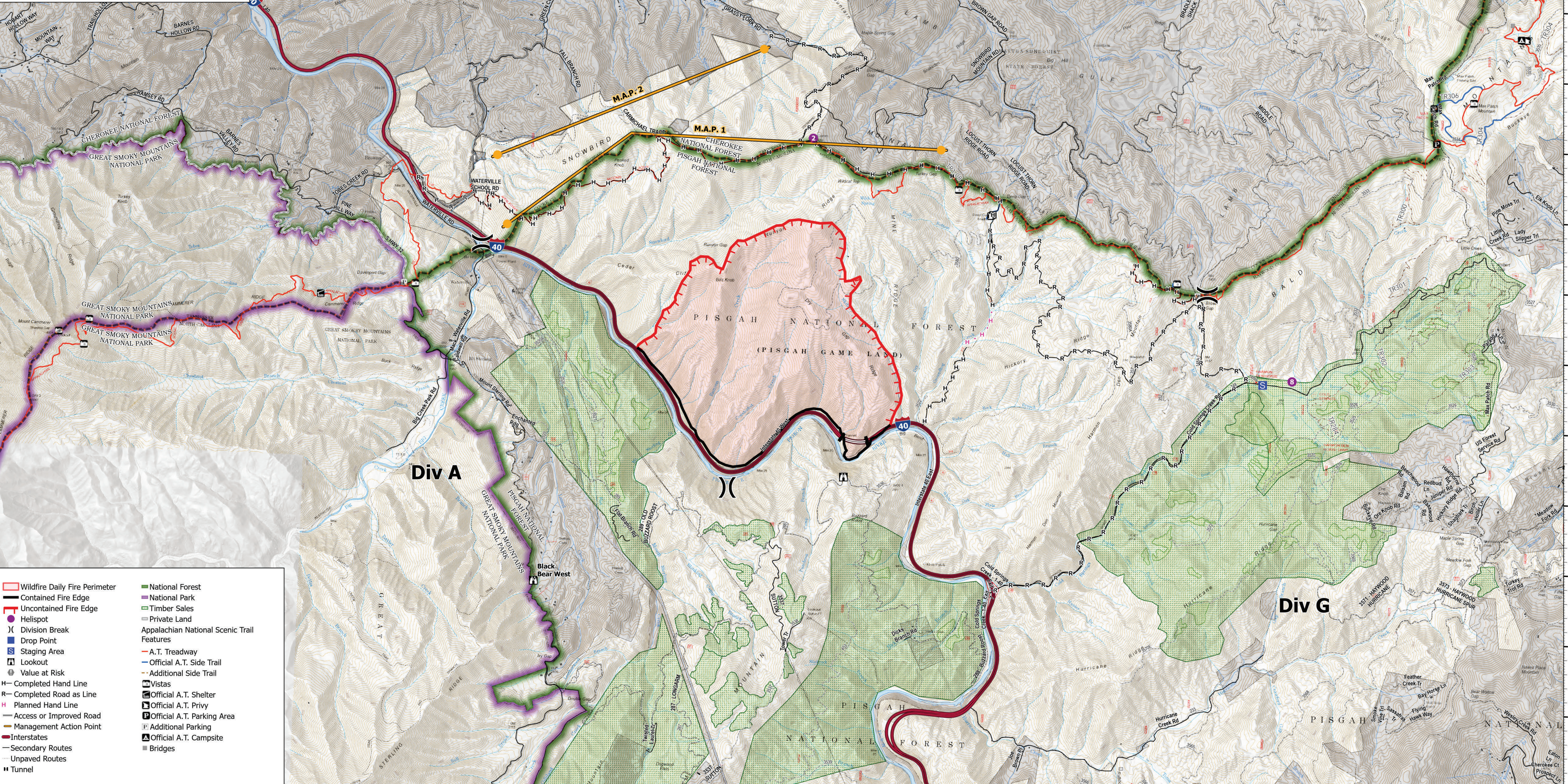


Div E

Div C

Div A

Div G



- Wildfire Daily Fire Perimeter
- Contained Fire Edge
- Uncontained Fire Edge
- Hellsport
- Division Break
- Drop Point
- Staging Area
- Lookout
- Value at Risk
- Completed Hand Line
- Completed Road as Line
- Planned Hand Line
- Access or Improved Road
- Secondary Routes
- Unpaved Routes
- Tunnel
- National Forest
- National Park
- Timber Sales
- Private Land
- Appalachian National Scenic Trail Features
- A.T. Treadway
- Official A.T. Side Trail
- Additional Side Trail
- Vistas
- Official A.T. Shelter
- Official A.T. Privy
- Official A.T. Parking Area
- Additional Parking
- Official A.T. Campsite
- Bridges

35°49.5'N 35°49'N 35°48.5'N 35°48'N 35°47.5'N 35°47'N 35°46.5'N 35°46'N 35°45.5'N 35°45'N 35°44.5'N 35°44'N 35°43.5'N 35°43'N

35°50'N 35°49.5'N 35°49'N 35°48.5'N 35°48'N 35°47.5'N 35°47'N 35°46.5'N 35°46'N 35°45.5'N 35°45'N 35°44.5'N 35°44'N 35°43.5'N 35°43'N

83°10'W 83°9.5'W 83°9'W 83°8.5'W 83°8'W 83°7.5'W 83°7'W 83°6.5'W 83°6.01'W 83°5.5'W 83°5'W 83°4.5'W 83°4'W 83°3.5'W 83°3'W 83°2.5'W 83°2'W 83°1.5'W 83°1'W 83°0.5'W 83°W 82°59.5'W 82°59'W 82°58.51'W 82°58'W 82°57.5'W 82°57'W