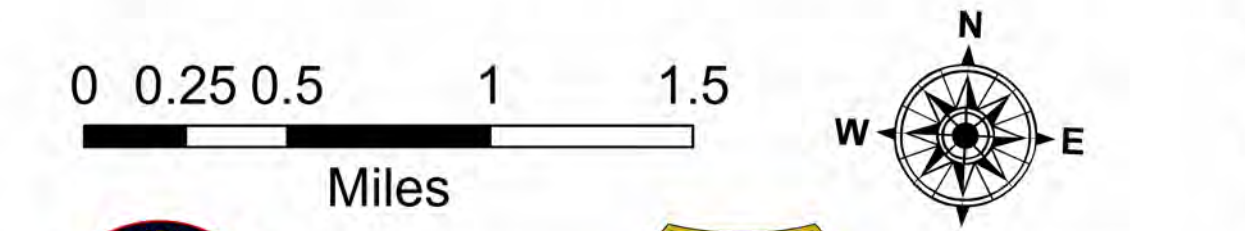


83°13'W 83°12.5'W 83°12'W 83°11.5'W 83°11'W 83°10.5'W 83°10'W 83°9.5'W 83°9'W 83°8.5'W 83°8'W 83°7.5'W 83°7'W 83°6.5'W 83°6.01'W 83°5.5'W 83°5'W 83°4.5'W 83°4'W 83°3.5'W 83°3'W 83°2.5'W 83°2'W 83°1.5'W 83°1'W 83°0.5'W 83°W 82°59.5'W 82°59'W 82°58'W 82°57.5'W 82°57'W 82°56.5'W 82°56'W 82°55.5'W

Transportation

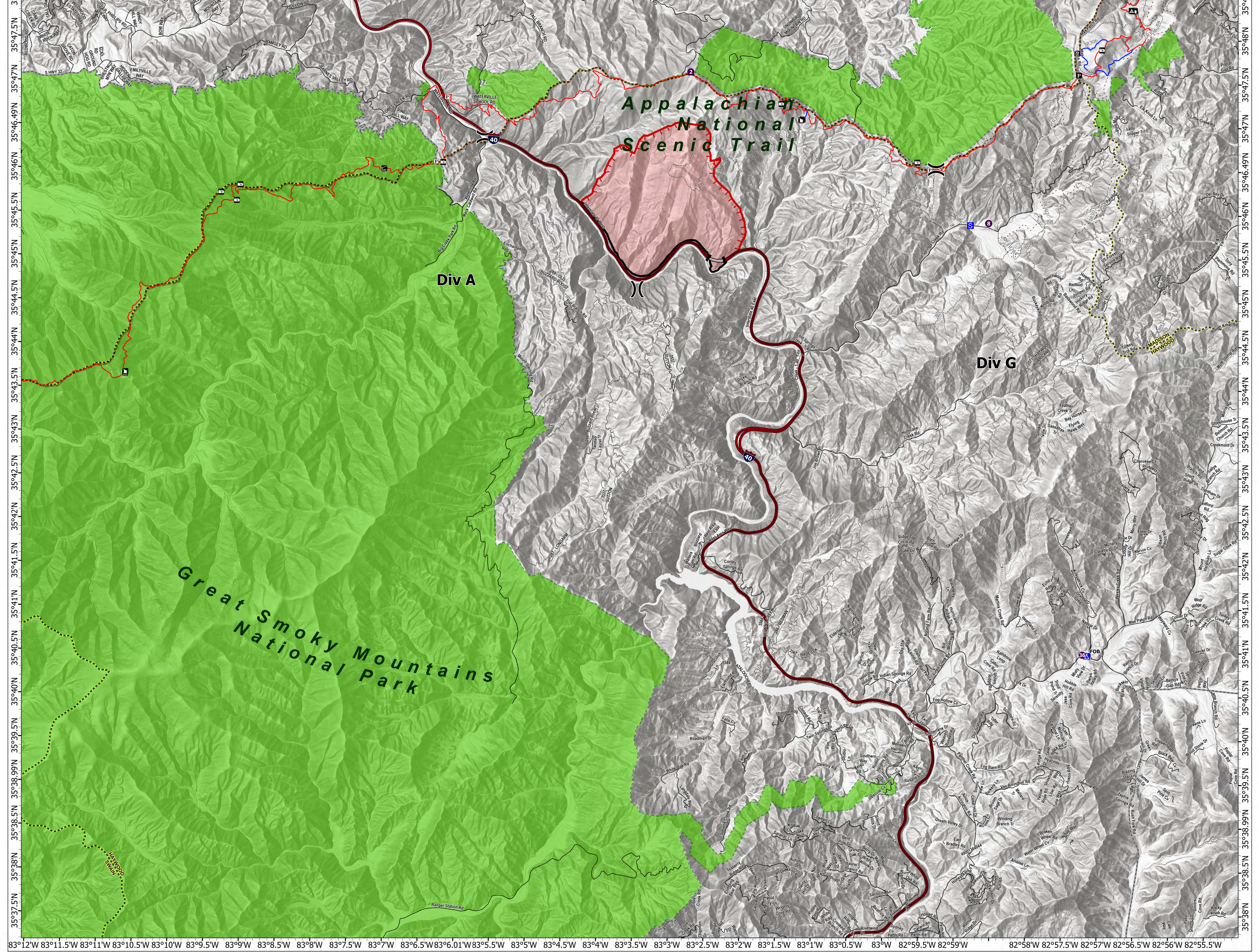
Black Bear
NC-NCF-230334
11/20/2023

1,740 acres at 11/19/2023 1258



- Helispot
- ⊕ Helibase
- ⌘ Division Break
- Drop Point
- ⓐ Camp
- ⓑ Staging Area
- Contained Fire Edge
- - - Uncontained Fire Edge
- ▭ Wildfire Daily Fire Perimeter
- Road
- Interstates
- State Routes
- Secondary Routes
- Unpaved Routes
- Road
- County Boundary
- Bridges
- ⓐ Official A.T. Campsite
- ⓑ Official A.T. Parking Area
- ⓓ Additional Parking
- ⓔ Official A.T. Privy
- ⓖ Official A.T. Shelter
- ⓗ Vistas
- Official A.T. Side Trail
- - - Additional Side Trail
- Appalachian Trail
- Tunnel
- TN Interstates
- TN Highways
- TN Secondary Routes
- Interstates
- State Routes
- Secondary Routes
- Unpaved Routes
- Road
- Trails
- State Boundary
- National Park Service

Point Type	Label	Latitude	Longitude
Camp	FOB	35° 40.907' N	82° 57.286' W
Drop Point	1	35° 48.859' N	83° 04.840' W
Helibase		35° 54.885' N	83° 10.528' W
Helispot	2	35° 47.400' N	83° 03.162' W
Helispot	36	35° 40.917' N	82° 57.350' W
Helispot	8	35° 45.805' N	82° 58.900' W
Staging Area		35° 45.772' N	82° 59.155' W



83°12'W 83°11.5'W 83°11'W 83°10.5'W 83°10'W 83°9.5'W 83°9'W 83°8.5'W 83°8'W 83°7.5'W 83°7'W 83°6.5'W 83°6.01'W 83°5.5'W 83°5'W 83°4.5'W 83°4'W 83°3.5'W 83°3'W 83°2.5'W 83°2'W 83°1.5'W 83°1'W 83°0.5'W 83°W 82°59.5'W 82°59'W 82°58'W 82°57.5'W 82°57'W 82°56.5'W 82°56'W 82°55.5'W