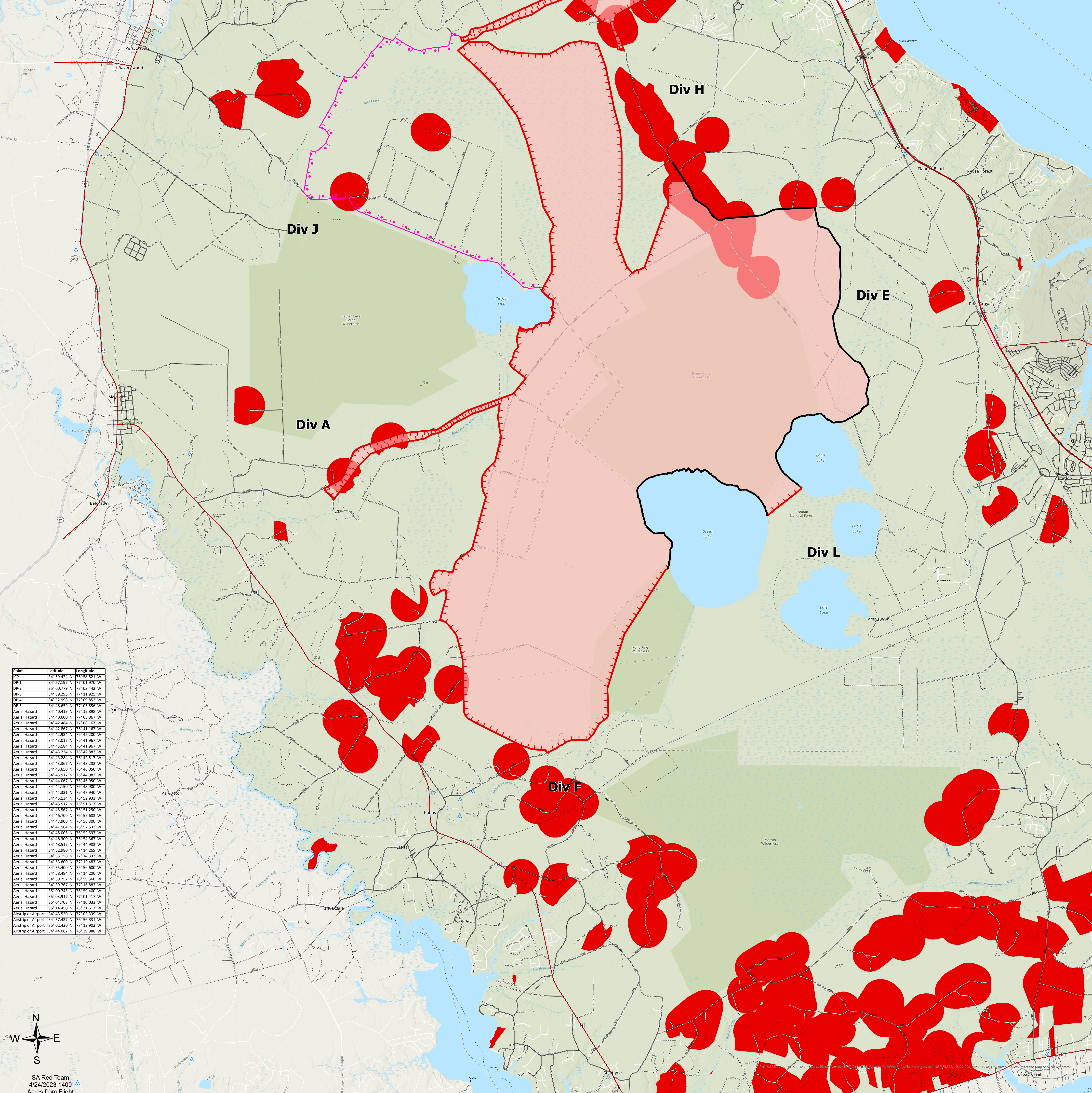


**AirOps**  
Great Lakes  
NCNCF-230180  
4/24/2023

36,000 acres at 04/22/2023 @ 1930



- Planned Burnout
- Contained
- Uncontained
- Wildfire Daily Fire Perimeter
- Airport/Run/Taxi/Apron - Paved
- Landing Strip - Paved
- Landing Strip - Unpaved
- R.R. Siding
- R.R. Standard Gauge
- Highway
- Marine Highway
- Road - Light Duty - Dirt
- Road - Light Duty - Gravel
- Road - Light Duty - Paved
- Road - Light Duty - Unspecified Composition
- Road - Unimproved
- Trail
- Aerial Fire Retardant Avoidance Areas: Terrestrial
- Single Obstructions (>= 1000 Ft AGL)
- ▲ Group Obstructions (>= 1000 Ft AGL)
- ▲ Single Obstructions (< 1000 Ft AGL)
- ▲ Group Obstructions (< 1000 Ft AGL)



Point	Latitude	Longitude
ICP	34° 59.824' N	77° 58.821' W
DP-1	34° 57.197' N	77° 01.970' W
DP-2	35° 00.779' N	77° 03.443' W
DP-3	34° 59.283' N	77° 11.325' W
DP-4	34° 52.998' N	77° 09.852' W
DP-5	34° 48.659' N	77° 05.556' W
Aerial Hazard	34° 40.459' N	77° 12.898' W
Aerial Hazard	34° 40.600' N	77° 09.867' W
Aerial Hazard	34° 42.484' N	77° 08.167' W
Aerial Hazard	34° 42.867' N	76° 41.167' W
Aerial Hazard	34° 42.334' N	76° 42.200' W
Aerial Hazard	34° 43.017' N	76° 41.967' W
Aerial Hazard	34° 43.184' N	76° 41.967' W
Aerial Hazard	34° 43.334' N	76° 43.883' W
Aerial Hazard	34° 43.284' N	76° 42.517' W
Aerial Hazard	34° 43.367' N	76° 43.783' W
Aerial Hazard	34° 43.650' N	76° 46.900' W
Aerial Hazard	34° 43.917' N	76° 44.983' W
Aerial Hazard	34° 44.067' N	76° 46.950' W
Aerial Hazard	34° 44.550' N	76° 46.900' W
Aerial Hazard	34° 44.331' N	76° 47.940' W
Aerial Hazard	34° 45.134' N	76° 52.933' W
Aerial Hazard	34° 45.517' N	76° 51.337' W
Aerial Hazard	34° 45.600' N	76° 51.200' W
Aerial Hazard	34° 46.700' N	76° 52.683' W
Aerial Hazard	34° 47.900' N	76° 56.200' W
Aerial Hazard	34° 47.884' N	76° 52.533' W
Aerial Hazard	34° 48.000' N	76° 52.597' W
Aerial Hazard	34° 48.300' N	76° 54.367' W
Aerial Hazard	34° 48.550' N	76° 44.983' W
Aerial Hazard	34° 52.980' N	77° 14.269' W
Aerial Hazard	34° 53.150' N	77° 14.333' W
Aerial Hazard	34° 53.600' N	77° 12.883' W
Aerial Hazard	34° 55.400' N	76° 56.600' W
Aerial Hazard	34° 58.484' N	77° 14.200' W
Aerial Hazard	34° 59.750' N	77° 09.500' W
Aerial Hazard	34° 59.767' N	77° 16.883' W
Aerial Hazard	35° 00.743' N	76° 59.400' W
Aerial Hazard	35° 03.917' N	77° 01.417' W
Aerial Hazard	35° 04.703' N	77° 10.033' W
Aerial Hazard	35° 14.450' N	75° 31.617' W
Airstrip or Airport	34° 43.520' N	77° 03.339' W
Airstrip or Airport	34° 57.437' N	76° 56.833' W
Airstrip or Airport	35° 02.430' N	77° 13.902' W
Airstrip or Airport	34° 44.062' N	76° 39.988' W

SA Red Team  
4/24/2023 1409  
Acres from Flight  
NAD 1983 2011 Datum, LatLong Grid

