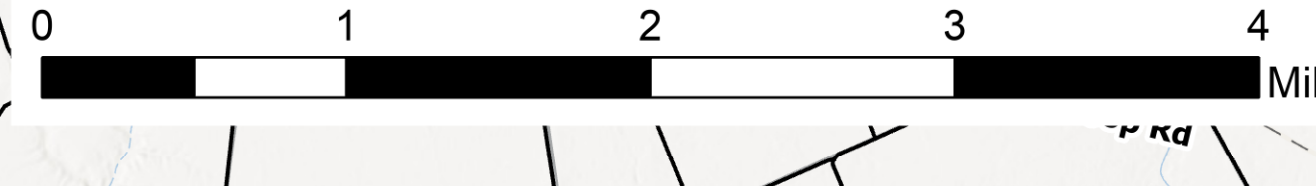


Suppression Repair

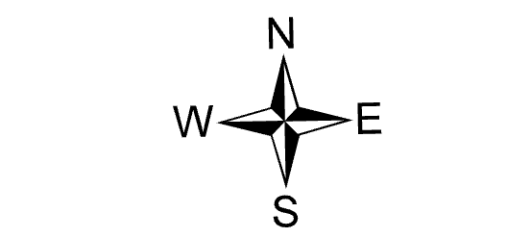
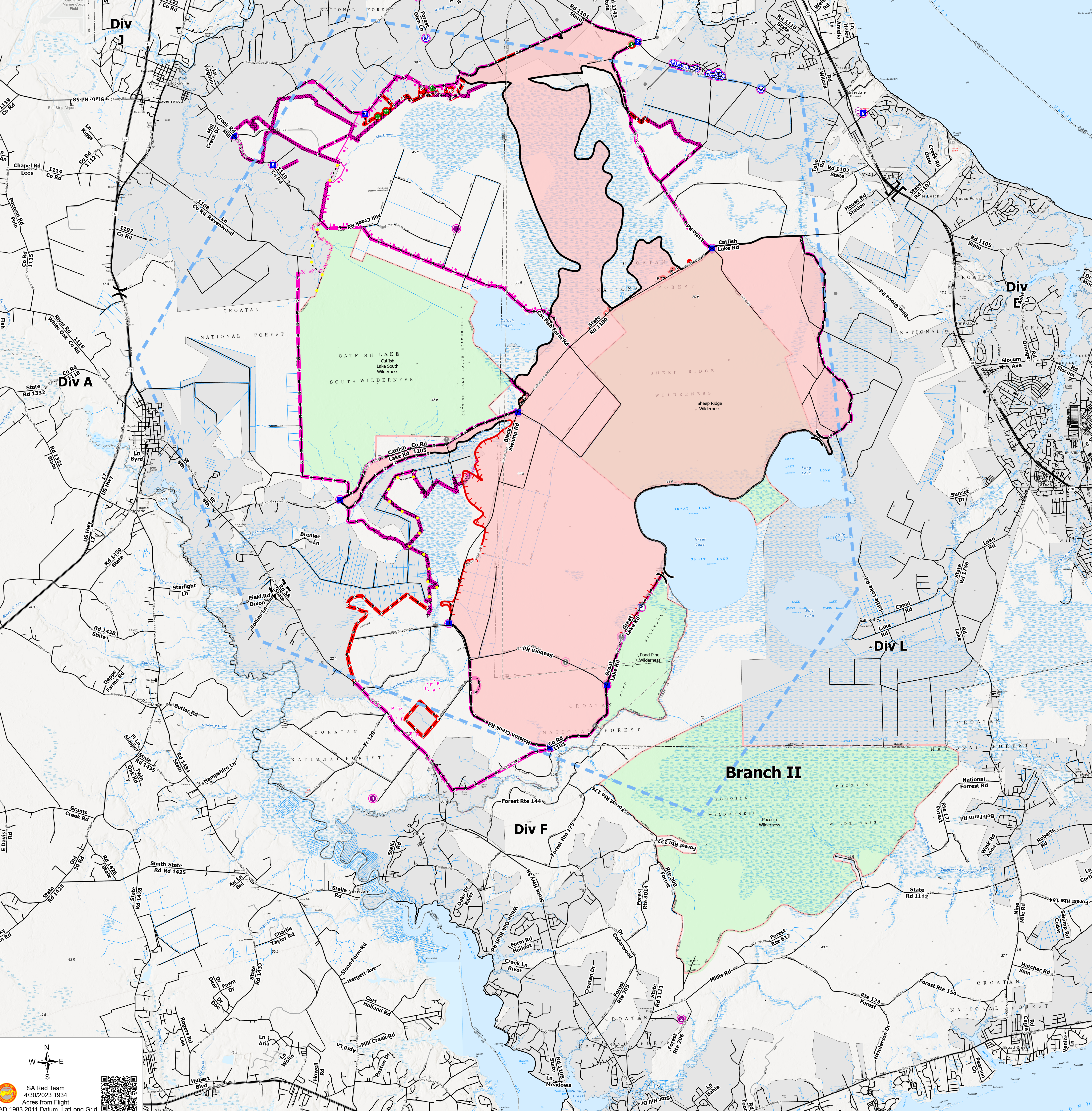
Great Lakes
NCNCF-230180
05/01/2023



32,400 acres at 04/24/2023 @ 1230



- Pump
- Helibase
- Division Break
- Branch Break
- Incident Command Post
- Drop Point
- Hot Spot - Spot Fire
- Value at Risk
- Other
- Gate
- Bridge
- Stream Crossing
- Dozer Push
- Culvert
- Water Source
- Wildfire Daily Fire Perimeter
- Wilderness Areas
- Completed Dozer Line
- Completed Flow Line
- Completed Road as Line
- Planned Burnout
- Planned Dozer Line
- Planned Plow Line
- Highlighted Feature
- Other
- Temporary Flight Restriction
- Contained
- Uncontained
- In Use - Fire Management
- In Use - Fire Management
- Repair Needed
- No Repair Needed
- Canal/Aque/Ditch
- Dam or Weir - Masonry
- Stream - Intermittent
- Stream - Perennial
- Marsh/Swamp/Muskeg
- Open Water - Perennial
- Non-FS Lands
- Road



SA Red Team
4/30/2023 1934
Acres from Flight
NAD 1983 2011 Datum, Lat,Long Grid