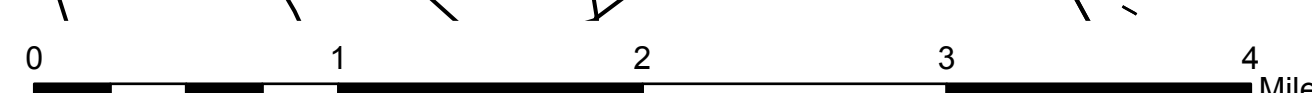


Communications

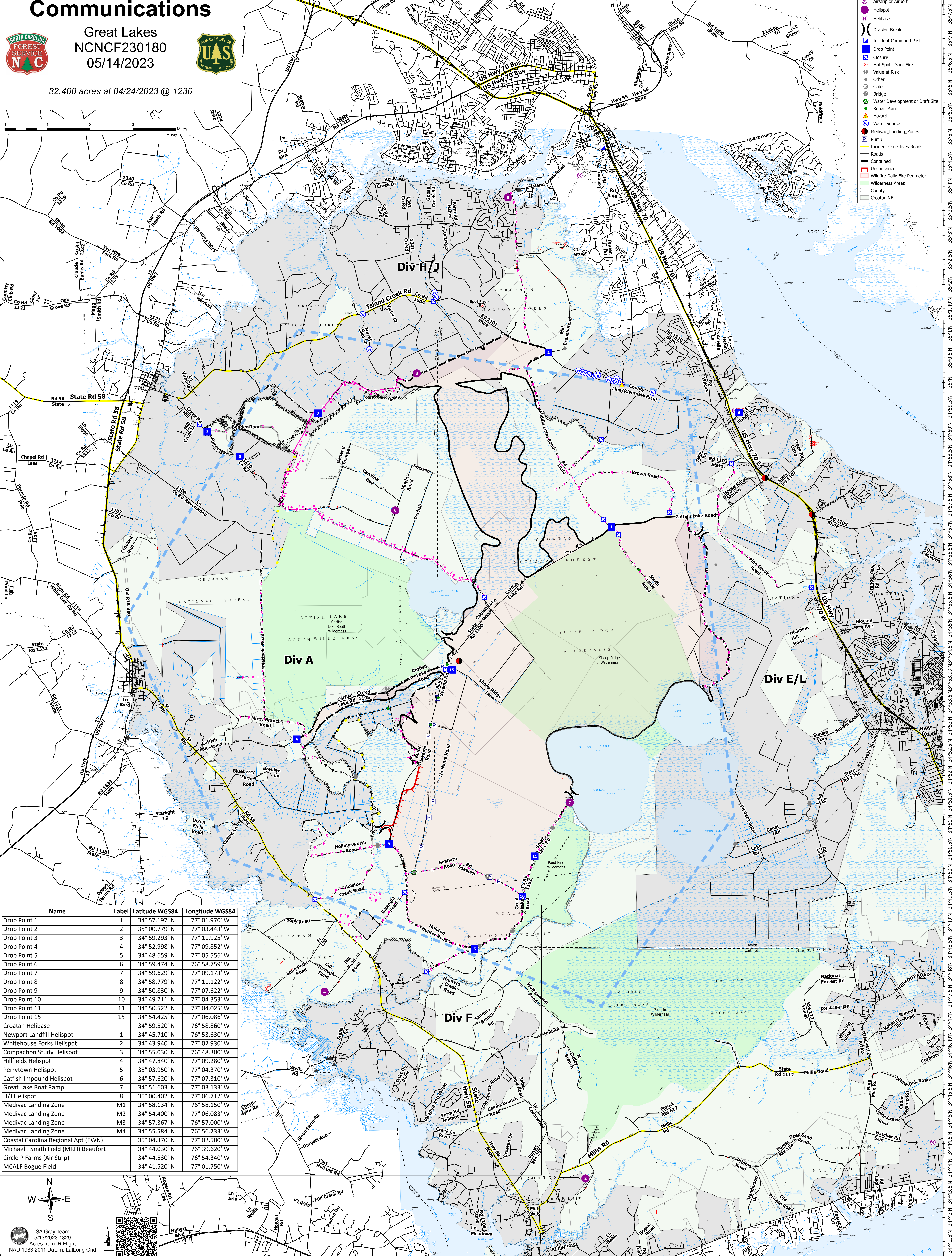
Great Lakes
NCNCF230180
05/14/2023



32,400 acres at 04/24/2023 @ 1230

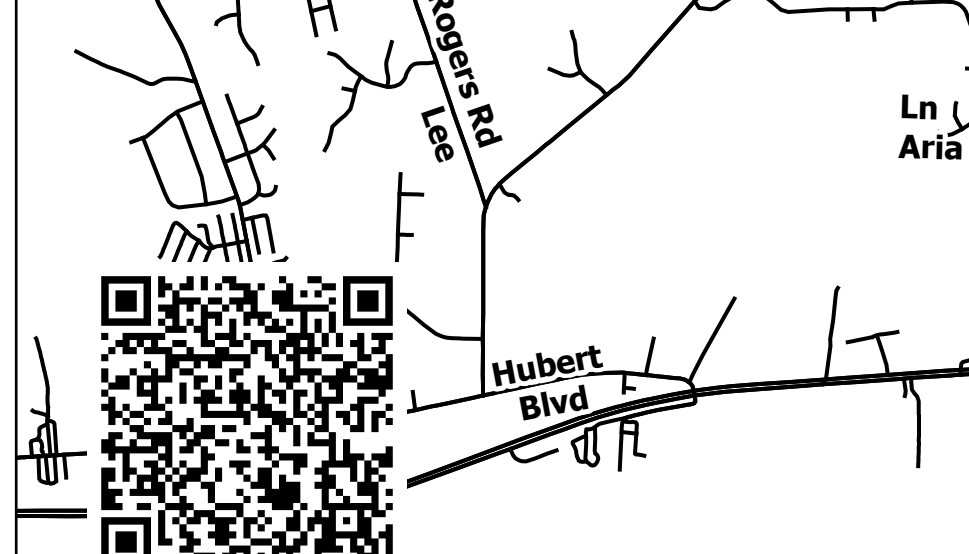


- Airstrip or Airport
- Helispot
- Helibase
- Division Break
- Incident Command Post
- Drop Point
- Closure
- Hot Spot - Spot Fire
- Value at Risk
- Other
- Gate
- Bridge
- Water Development or Draft Site
- Repair Point
- Hazard
- Water Source
- Medivac_Landing_Zones
- Pump
- Incident Objectives Roads
- Roads
- Contained
- Wildfire Daily Fire Perimeter
- Wilderness Areas
- County
- Croatan NF



Name	Label	Latitude WGS84	Longitude WGS84
Drop Point 1	1	34° 57.197' N	77° 01.970' W
Drop Point 2	2	35° 00.779' N	77° 03.443' W
Drop Point 3	3	34° 59.293' N	77° 11.925' W
Drop Point 4	4	34° 52.998' N	77° 09.852' W
Drop Point 5	5	34° 48.659' N	77° 05.556' W
Drop Point 6	6	34° 59.474' N	76° 58.759' W
Drop Point 7	7	34° 59.629' N	77° 09.173' W
Drop Point 8	8	34° 58.779' N	77° 11.122' W
Drop Point 9	9	34° 50.830' N	77° 07.622' W
Drop Point 10	10	34° 49.711' N	77° 04.353' W
Drop Point 11	11	34° 50.522' N	77° 04.025' W
Drop Point 15	15	34° 54.425' N	77° 06.086' W
Croatan Helibase		34° 59.520' N	76° 58.860' W
Newport Landfill Helispot	1	34° 45.710' N	76° 53.630' W
Whitehouse Forks Helispot	2	34° 43.940' N	77° 02.930' W
Compaction Study Helispot	3	34° 55.030' N	76° 48.300' W
Hillfields Helispot	4	34° 47.840' N	77° 09.280' W
Perrytown Helispot	5	35° 03.950' N	77° 04.370' W
Catfish Impound Helispot	6	34° 57.620' N	77° 07.310' W
Great Lake Boat Ramp	7	34° 51.603' N	77° 03.133' W
H/J Helispot	8	35° 00.402' N	77° 06.712' W
Medivac Landing Zone	M1	34° 58.134' N	76° 58.150' W
Medivac Landing Zone	M2	34° 54.400' N	77° 06.083' W
Medivac Landing Zone	M3	34° 57.367' N	76° 57.000' W
Medivac Landing Zone	M4	34° 55.584' N	76° 56.733' W
Coastal Carolina Regional Apt (EWN)		35° 04.370' N	77° 02.580' W
Michael J Smith Field (MRH) Beaufort		34° 44.030' N	76° 39.620' W
Circle P Farms (Air Strip)		34° 44.530' N	76° 54.340' W
MCALF Bogue Field		34° 41.520' N	77° 01.750' W

SA Gray Team
5/13/2023 1829
Acres from IR Flight
NAD 1983 2011 Datum. Lat/Long Grid



77°16.5'W 77°14.5'W 77°13.5'W 77°12.5'W 77°11.5'W 77°9.5'W 77°9'W 77°8.5'W 77°8'W 77°7.5'W 77°7'W 77°6.5'W 77°5.5'W 77°5'W 77°4.5'W 77°4'W 77°3.5'W 77°3'W 77°2.5'W 77°2'W 77°1.5'W 77°1'W 77°0.5'W 77°W 76°59.5'W 76°58.5'W 76°57.5'W 76°56.5'W 76°55.5'W 76°54.5'W