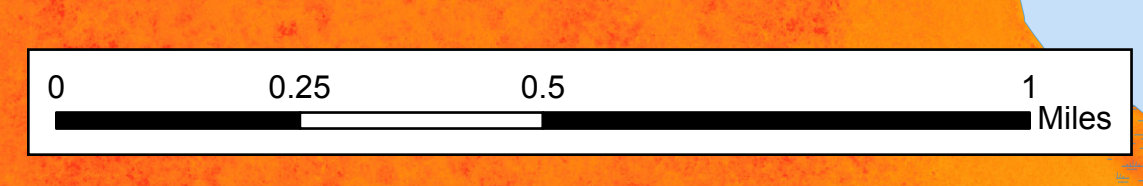


# Water Handling

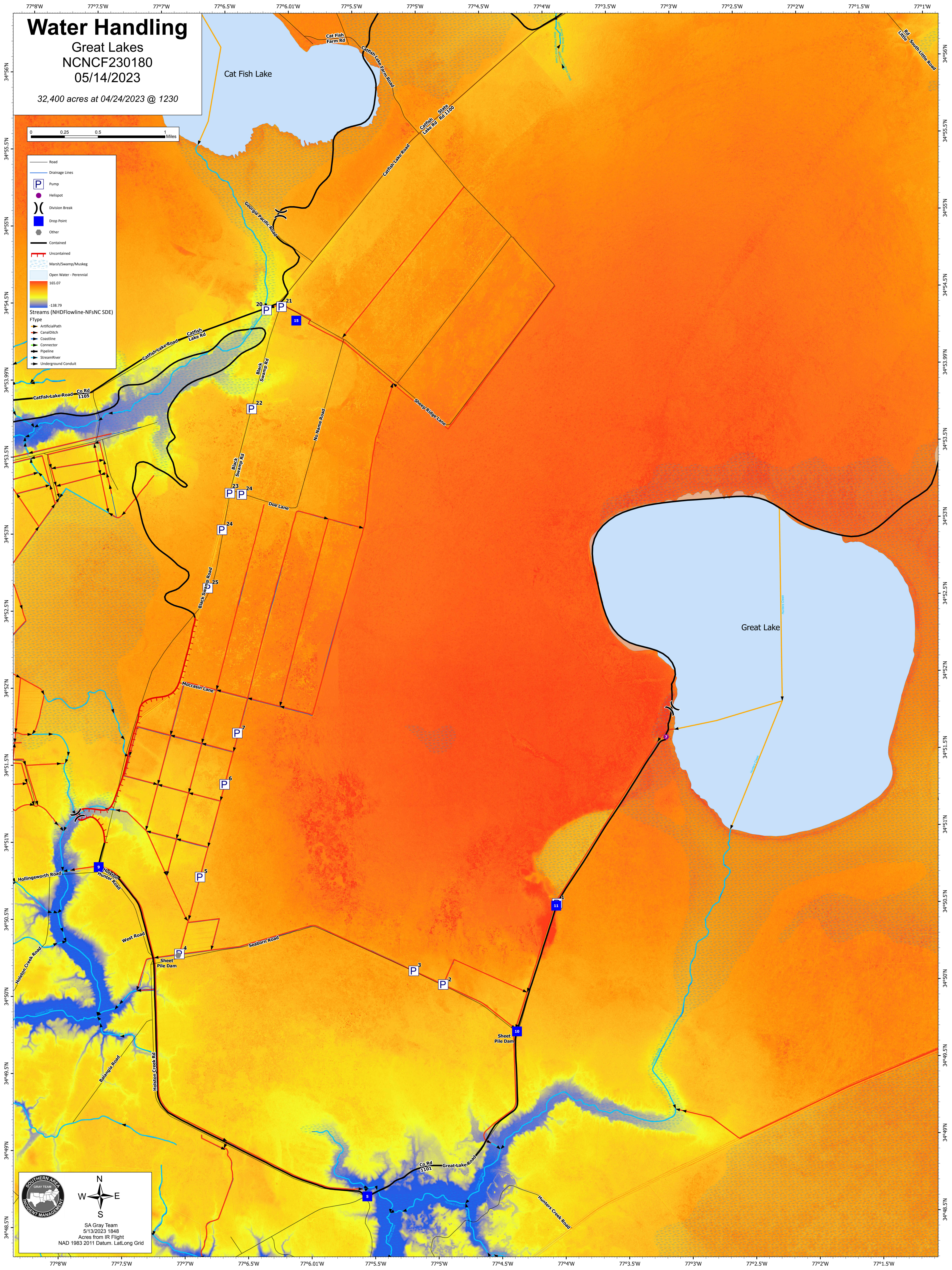
Great Lakes  
NCNCF230180  
05/14/2023

32,400 acres at 04/24/2023 @ 1230



**Legend**

- Road
- Drainage Lines
- Pump (P)
- Hellspot
- Division Break
- Drop Point
- Other
- Contained
- Uncontained
- Marsh/Swamp/Muskeg
- Open Water - Perennial
- 165.07
- 138.79
- Streams (NHDFlowline-NFsNC SDE)  
FType
  - ArtificialPath
  - Canal/Ditch
  - Coastline
  - Connector
  - Pipeline
  - Stream/River
  - Underground Conduit



**Southern Area Gray Team**  
WATER MANAGEMENT

SA Gray Team  
5/13/2023 1848  
Acres from IR Flight  
NAD 1983 2011 Datum, Lat/Long Grid