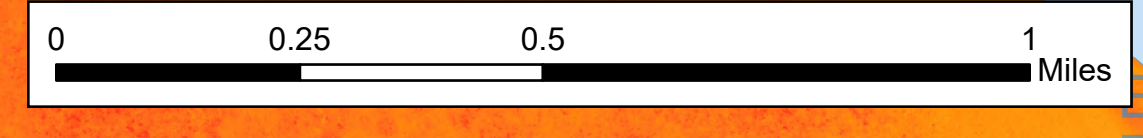


Water Handling

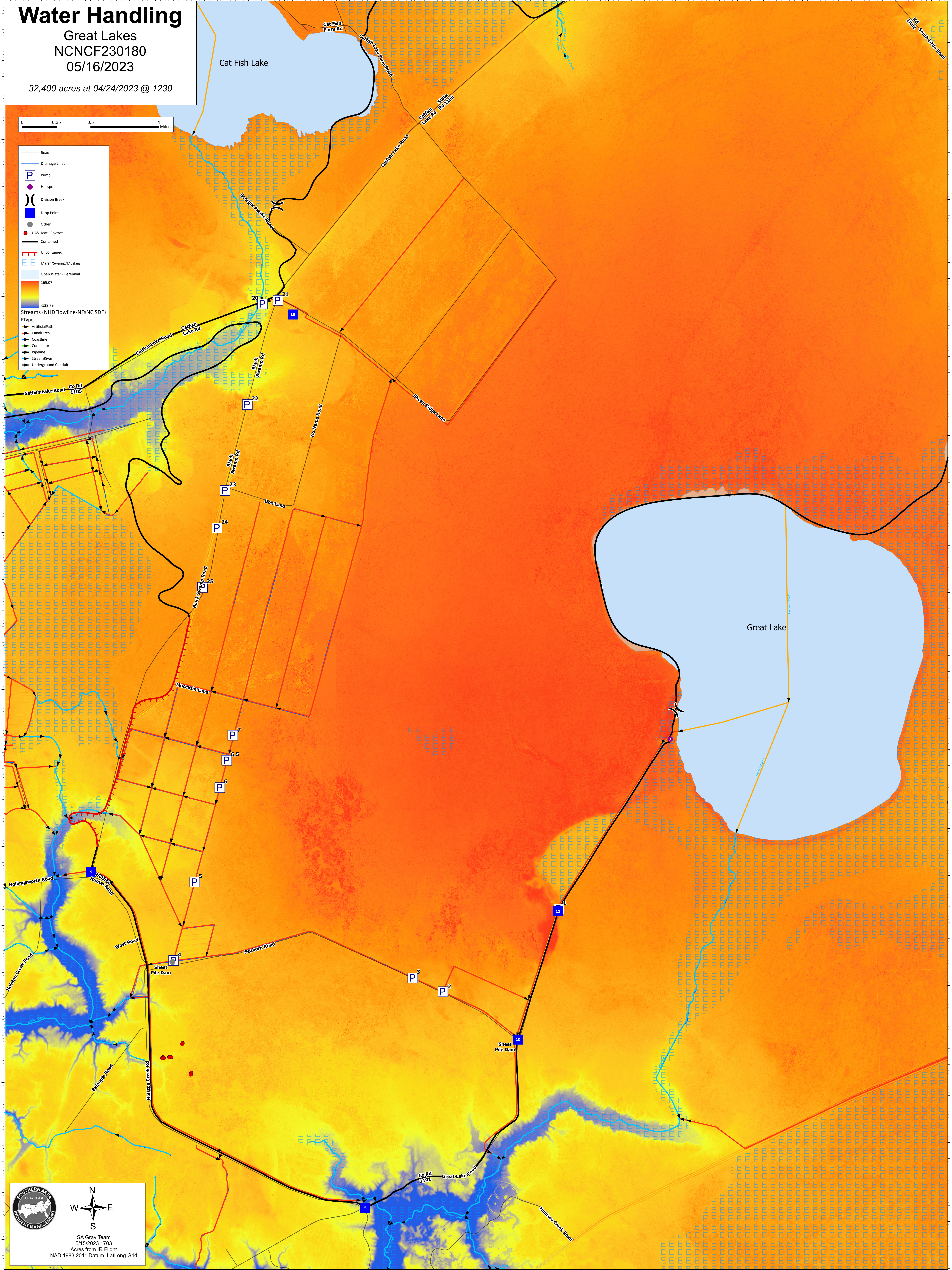
Great Lakes
NCNCF230180
05/16/2023

32,400 acres at 04/24/2023 @ 1230



Legend

- Road
- Drainage Lines
- Pump (P)
- Hellspot (purple dot)
- Division Break (X)
- Drop Point (blue square)
- Other (grey dot)
- UAS Heat - Footrot (red line)
- Contained (black line)
- Uncontained (red line)
- Marsh/Swamp/Muskeg (E)
- Open Water - Perennial (E)
- Streams (NHDFlowline-NFsNC SDE)
FType:
 - ArtificialPath
 - Canal/Ditch
 - Coastline
 - Connector
 - Pipeline
 - Stream/River
 - Underground Conduit



SA Gray Team
5/15/2023 1703
Acres from IR Flight
NAD 1983 2011 Datum, Lat/Long Grid