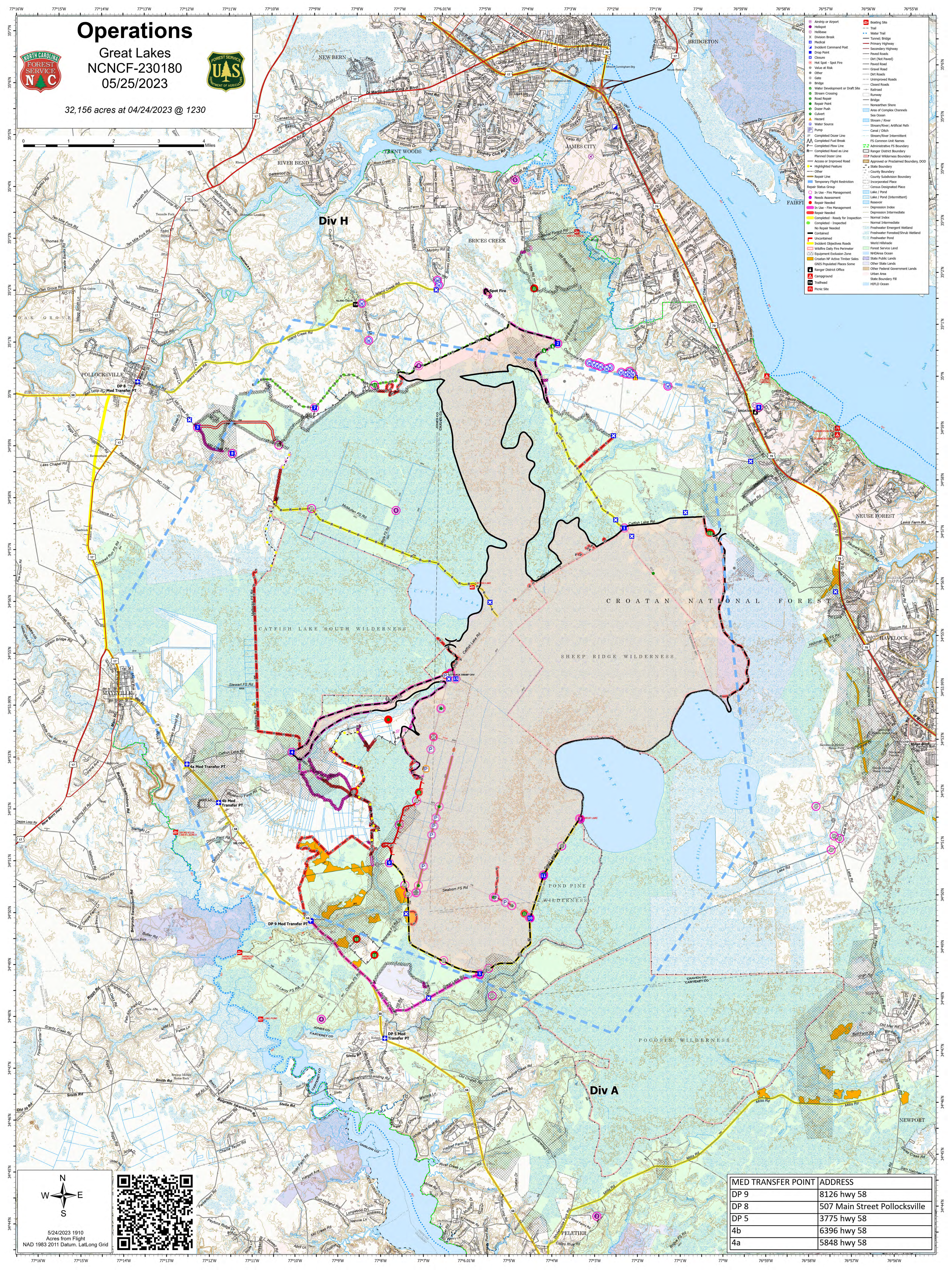


Operations

Great Lakes
NCNCF-230180
05/25/2023



32,156 acres at 04/24/2023 @ 1230



Div H

Div A

- Injury or Airport
- Helibase
- Division Break
- ▲ Incident Command Post
- Drop Point
- Closure
- Gate
- Bridge
- Water Development or Draft Site
- Stream Crossing
- Gate
- Repair Point
- Dozer Path
- Culvert
- Water Source
- Pump
- Completed Dozer Line
- Completed Fuel Break
- Completed Flow Line
- Completed Road as Line
- Planned Dozer Line
- Access or Improved Road
- Highlighted Feature
- Other
- In Use - Fire Management
- Heat Spot Assessment
- Repair Needed
- Hazard
- Completed - Ready for Inspection
- Completed - Inspected
- No Repair Needed
- Contaminated
- Incident Objectives Roads
- Wildfire Daily Fire Perimeter
- Equipment Exclusion Zone
- Croatan NF Active Timber Sales
- GNIS Populated Places Some
- Ranger District Office
- Campground
- Trailhead
- Picnic Site
- Boating Site
- Water Trail
- Turned Bridge
- Primary Highway
- Secondary Highway
- Paved Road
- Dirt (Not Paved)
- Paved Road
- Value of Risk
- Gravel Road
- Dirt Road
- Unimproved Roads
- Closed Roads
- Railroad
- Runway
- Bridge
- Closed Shore
- Areas of Complex Channels
- Sea Ocean
- Stream / River
- Stream/River; Artificial Path
- Canal / Ditch
- Stream/River Intermittent
- FS Common Line Names
- Administrative FS Boundary
- Ranger District Boundary
- Federal Wilderness Boundary
- Approved or Proclaimed Boundary, DOO
- County Boundary
- County Subdivision Boundary
- Incorporated Boundary
- Census Designated Place
- Lake / Pond
- Lake / Pond (Intermittent)
- Reservoir
- Depression Index
- Depression Intermediate
- Normal Index
- Normal Intermediate
- Freshwater Emergent Wetland
- Forest Service Land
- Freshwater Forested/Shrub Wetland
- Freshwater Pond
- World Hillshade
- Forest Service Land
- State Public Lands
- Other State Lands
- Other Federal Government Lands
- Urban Area
- State Boundary Fill
- HFDL Ocean



MED TRANSFER POINT ADDRESS	
DP 9	8126 hwy 58
DP 8	507 Main Street Pollockville
DP 5	3775 hwy 58
4b	6396 hwy 58
4a	5848 hwy 58



5/24/2023 1910
Acres from Flight
NAD 1983 2011 Datum, LatLong Grid