

76°29'W 76°28.5'W 76°28'W 76°27.5'W 76°27'W 76°26.5'W 76°26'W 76°25.5'W 76°25'W 76°24.5'W 76°24'W 76°23.5'W 76°23'W 76°22.5'W 76°22'W 76°21.5'W 76°21.01'W 76°20.5'W 76°20'W 76°19.5'W 76°19'W 76°18.5'W 76°18'W 76°17.5'W 76°17'W 76°16.5'W

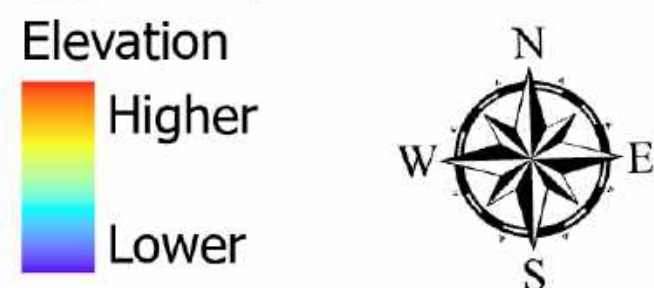
Water Handling

Last Resort
NC-NCS-230013
3/27/2023 Day

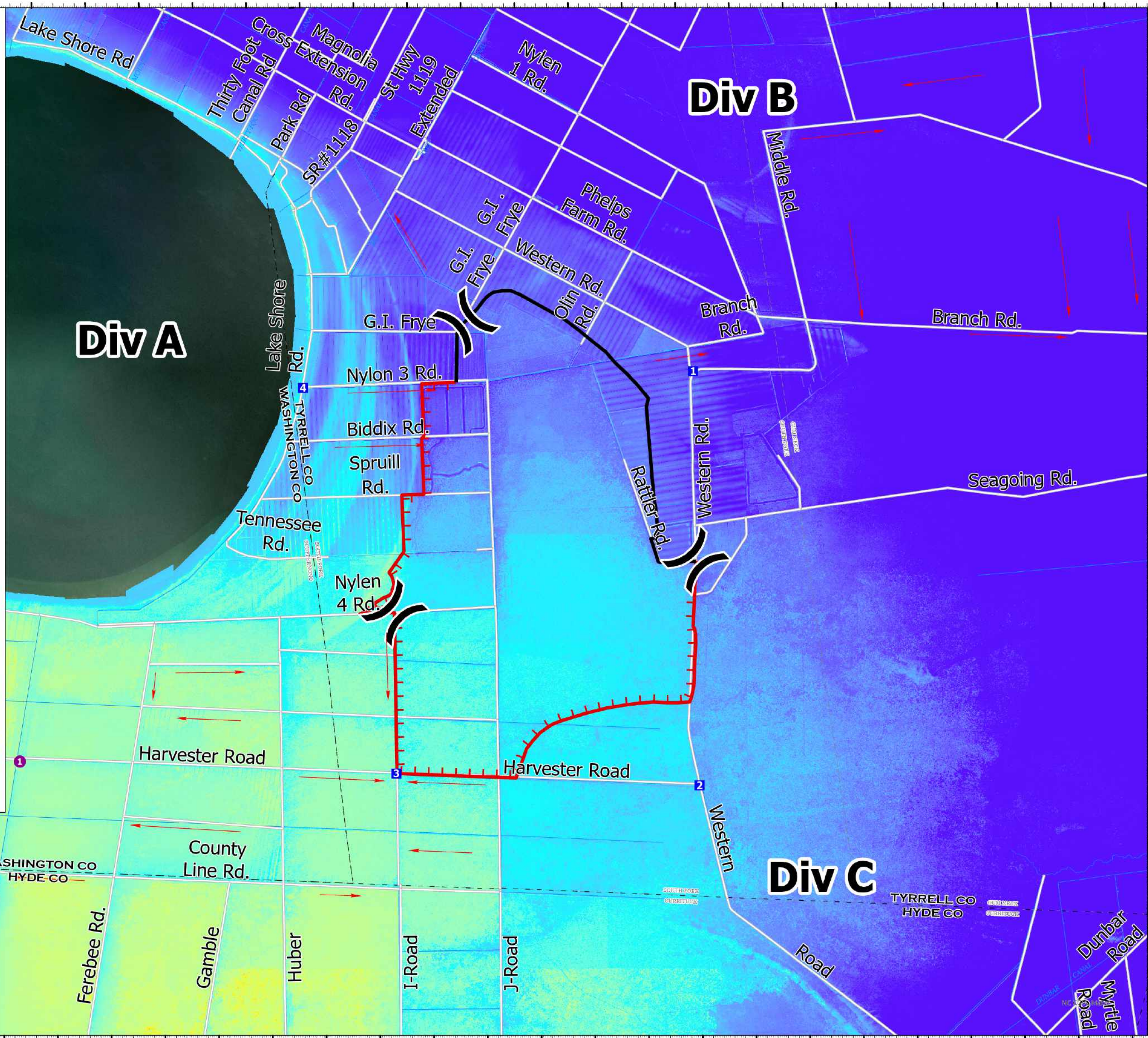
5198 acres at 3/25/2023 @ 1900



- Contained
- Uncontained
- Helispot
-) Division Break
- Drop Point
- Flow Direction
- Roads
- Stream/River; Artificial Path
- Canal / Ditch
- - - County Boundary
- - - County Subdivision Boundary



M. Haunsperger
3/26/2023 1412
Acres from GPS
North American 1983 Datum, LatLong Grid



76°29'W 76°28.5'W 76°28'W 76°27.5'W 76°27'W 76°26.5'W 76°26'W 76°25.5'W 76°25'W 76°24.5'W 76°24'W 76°23.5'W 76°23'W 76°22.5'W 76°22'W 76°21.5'W 76°21.01'W 76°20.5'W 76°20'W 76°19.5'W 76°19'W 76°18.5'W 76°18'W 76°17.5'W 76°17'W 76°16.5'W