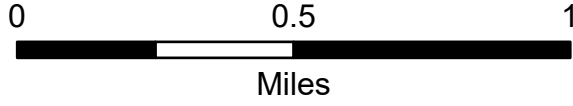


Water Handling

Last Resort
NC-NCS-230013
4/3/2023

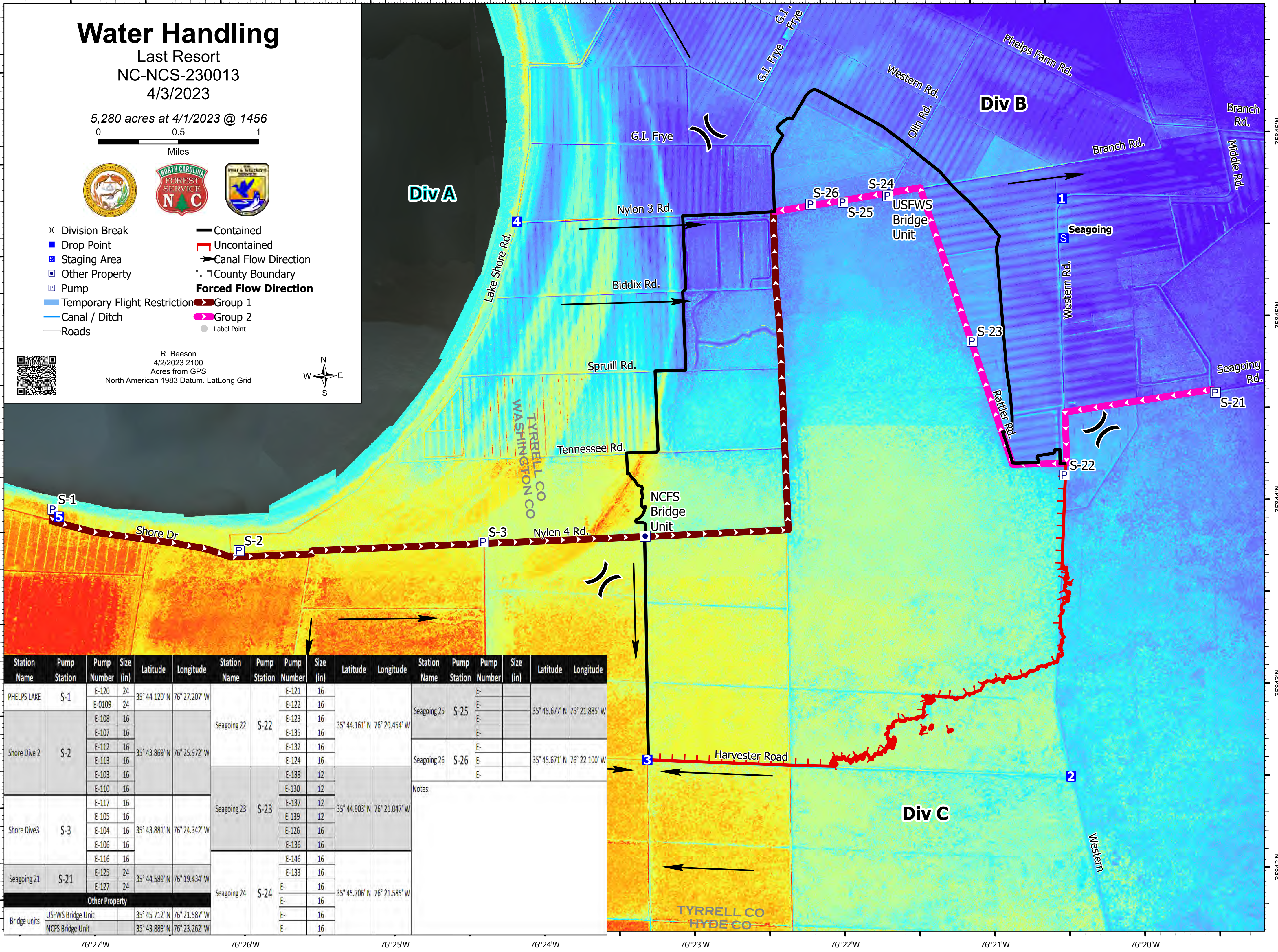
5,280 acres at 4/1/2023 @ 1456



- (X) Division Break
- Drop Point
- Staging Area
- Other Property
- Pump
- ▬ Temporary Flight Restriction
- ▬ Canal / Ditch
- ▬ Roads
- ▬ Contained
- ▬ Uncontained
- ▬ Canal Flow Direction
- ▬ County Boundary
- Forced Flow Direction**
- ▬ Group 1
- ▬ Group 2
- Label Point



R. Beeson
4/2/2023 2100
Acres from GPS
North American 1983 Datum. LatLong Grid



Station Name	Pump Station	Pump Number	Pump Size (in)	Latitude	Longitude	Station Name	Pump Station	Pump Number	Pump Size (in)	Latitude	Longitude	Station Name	Pump Station	Pump Number	Pump Size (in)	Latitude	Longitude
PHELPS LAKE	S-1	E-120	24	35° 44.120' N	76° 27.207' W	Seagoing 22	S-22	E-121	16	35° 44.161' N	76° 20.454' W	Seagoing 25	S-25	E-		35° 45.677' N	76° 21.885' W
		E-0109	24					E-122	16					E-			
Shore Dive 2	S-2	E-108	16	35° 43.869' N	76° 25.972' W	Seagoing 23	S-23	E-123	16	35° 44.903' N	76° 21.047' W	Seagoing 26	S-26	E-		35° 45.671' N	76° 22.100' W
		E-107	16					E-135	16					E-			
		E-112	16					E-132	16					E-			
		E-113	16					E-124	16					E-			
		E-103	16					E-138	12					E-			
E-110	16	E-130	12	E-													
Shore Dive3	S-3	E-117	16	35° 43.881' N	76° 24.342' W	Seagoing 24	S-24	E-137	12	35° 45.706' N	76° 21.585' W	USFWS Bridge Unit	S-23	E-		35° 45.712' N	76° 21.587' W
		E-105	16					E-139	12					E-			
		E-104	16					E-126	16					E-			
		E-106	16					E-136	16					E-			
Seagoing 21	S-21	E-116	16	35° 44.589' N	76° 19.434' W	NCFCS Bridge Unit	S-24	E-146	16	35° 43.889' N	76° 23.262' W	USFWS Bridge Unit	S-21	E-		35° 43.889' N	76° 23.262' W
		E-125	24					E-133	16					E-			
Other Property		E-127	24					E-	16					E-	16		

Div A

Div B

Div C

TYRRELL CO
WASHINGTON CO

TYRRELL CO
HYDE CO

Div A

Div B

Div C

TYRRELL CO
WASHINGTON CO

TYRRELL CO
HYDE CO