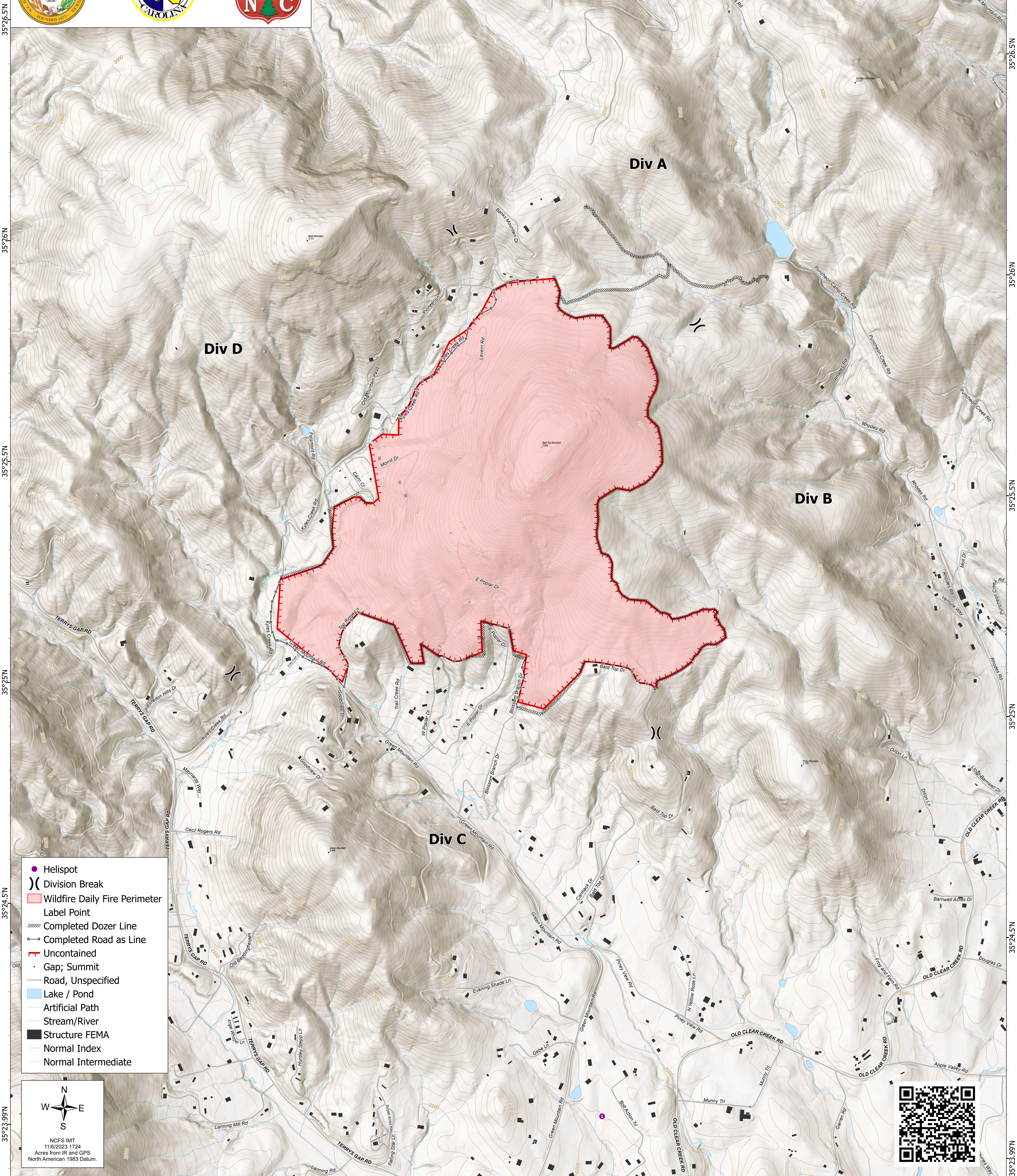


82°25'W 82°24.5'W 82°24'W 82°23.5'W 82°23'W 82°22.5'W

OPS Map

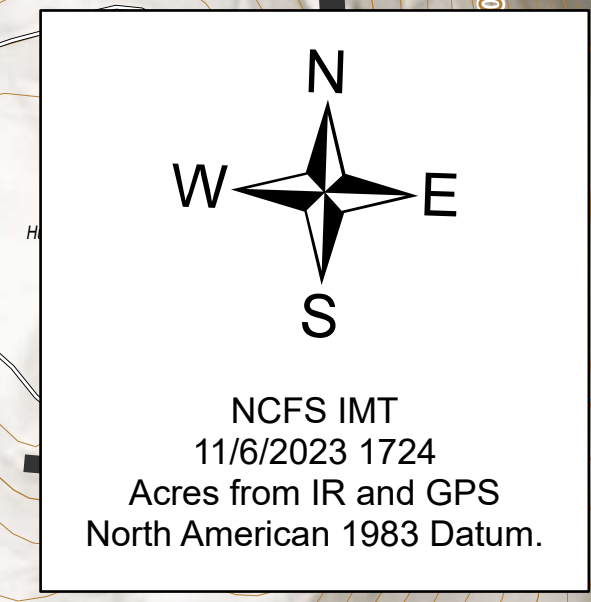
Poplar Drive
NC-NCS-230039
11/06/2023 Night Shift
431 acres at 11/6/2023 @ 1100 hrs



35°26.5'N
35°26'N
35°25.5'N
35°25'N
35°24.5'N
35°24'N
35°23.99'N

35°26.5'N
35°26'N
35°25.5'N
35°25'N
35°24.5'N
35°24'N
35°23.99'N

- Helispot
-) Division Break
- Wildfire Daily Fire Perimeter
- Label Point
- ▨ Completed Dozer Line
- Completed Road as Line
- ▬ Uncontained
- Gap; Summit
- Road, Unspecified
- Lake / Pond
- Artificial Path
- Stream/River
- Structure FEMA
- Normal Index
- Normal Intermediate



82°25'W 82°24.5'W 82°24'W 82°23.5'W 82°23'W 82°22.5'W