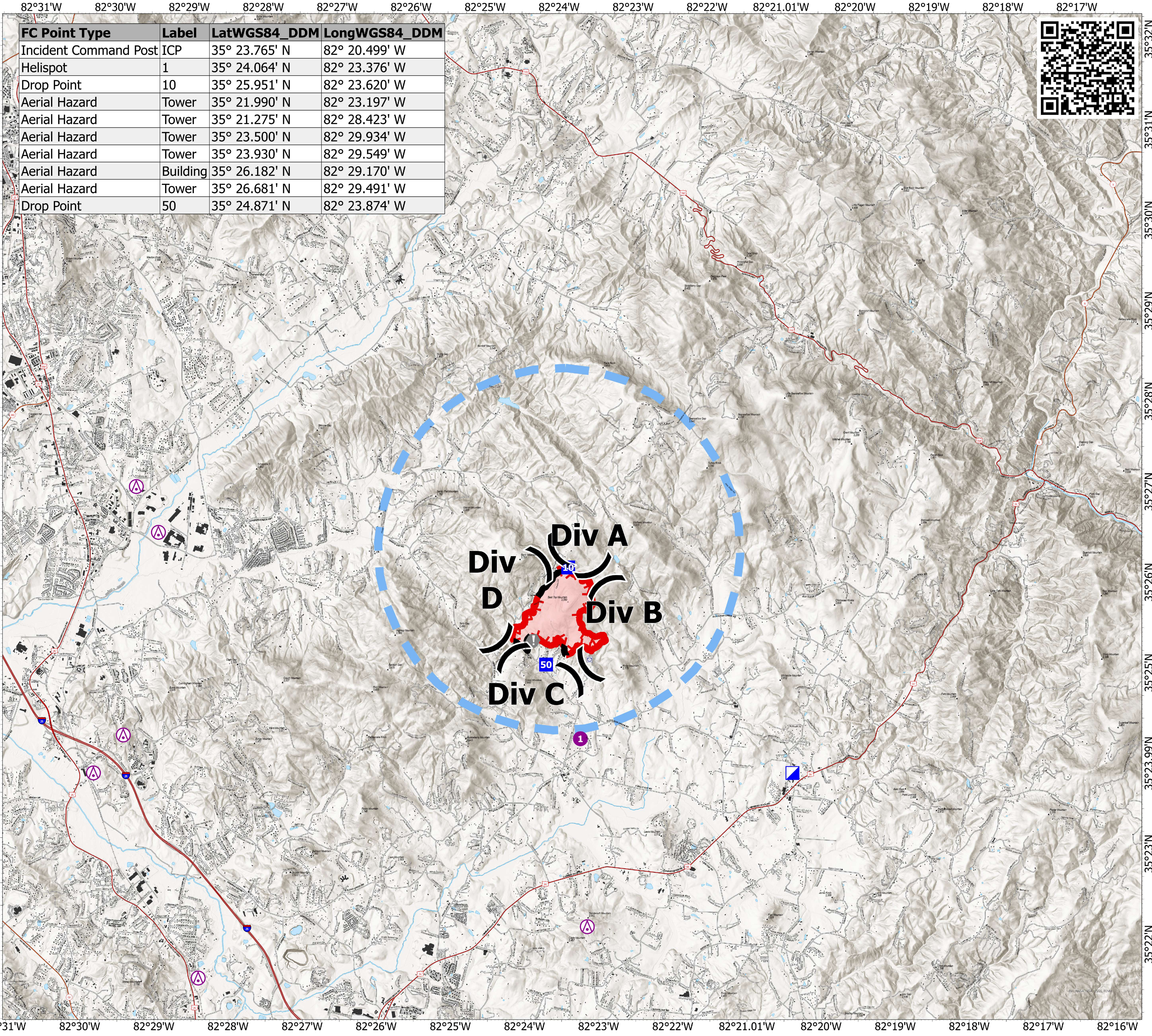


Air Ops

Poplar Drive
 NC-NCS-230039
 11/09/2023 Day Shift

431 acres at 11/6/2023 @ 1100 hrs



FC Point Type	Label	LatWGS84_DDM	LongWGS84_DDM
Incident Command Post	ICP	35° 23.765' N	82° 20.499' W
Helispot	1	35° 24.064' N	82° 23.376' W
Drop Point	10	35° 25.951' N	82° 23.620' W
Aerial Hazard	Tower	35° 21.990' N	82° 23.197' W
Aerial Hazard	Tower	35° 21.275' N	82° 28.423' W
Aerial Hazard	Tower	35° 23.500' N	82° 29.934' W
Aerial Hazard	Tower	35° 23.930' N	82° 29.549' W
Aerial Hazard	Building	35° 26.182' N	82° 29.170' W
Aerial Hazard	Tower	35° 26.681' N	82° 29.491' W
Drop Point	50	35° 24.871' N	82° 23.874' W



- Other Property
- Water Tank
- Primary Highway
- Secondary Highway
- Road, Unspecified
- Railroad
- Stream / River
- Structure FEMA
- Gap; Summit
- Aerial Hazard
- Helispot
- Division Break
- Incident Command Post
- Drop Point
- Value at Risk
- Temporary Flight Restriction
- Contained
- Uncontained

0 0.5 1 2 Miles



NCFS IMT
 11/8/2023 1048
 Acres from IR and GPS
 North American 1983 Datum