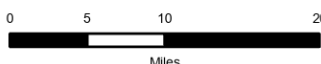


84°20'W 84°10'W 84°W 83°50'W 83°40'W 83°30'W 83°20'W 83°10'W 83°W 82°50'W 82°40'W 82°30'W 82°20'W 82°10'W 82°W 81°50'W 81°40'W 81°30'W 81°20'W 81°10'W 81°W

# Public Information

Western NC Wildfire Activity  
Greater Than 35 Acres

11/15/2023

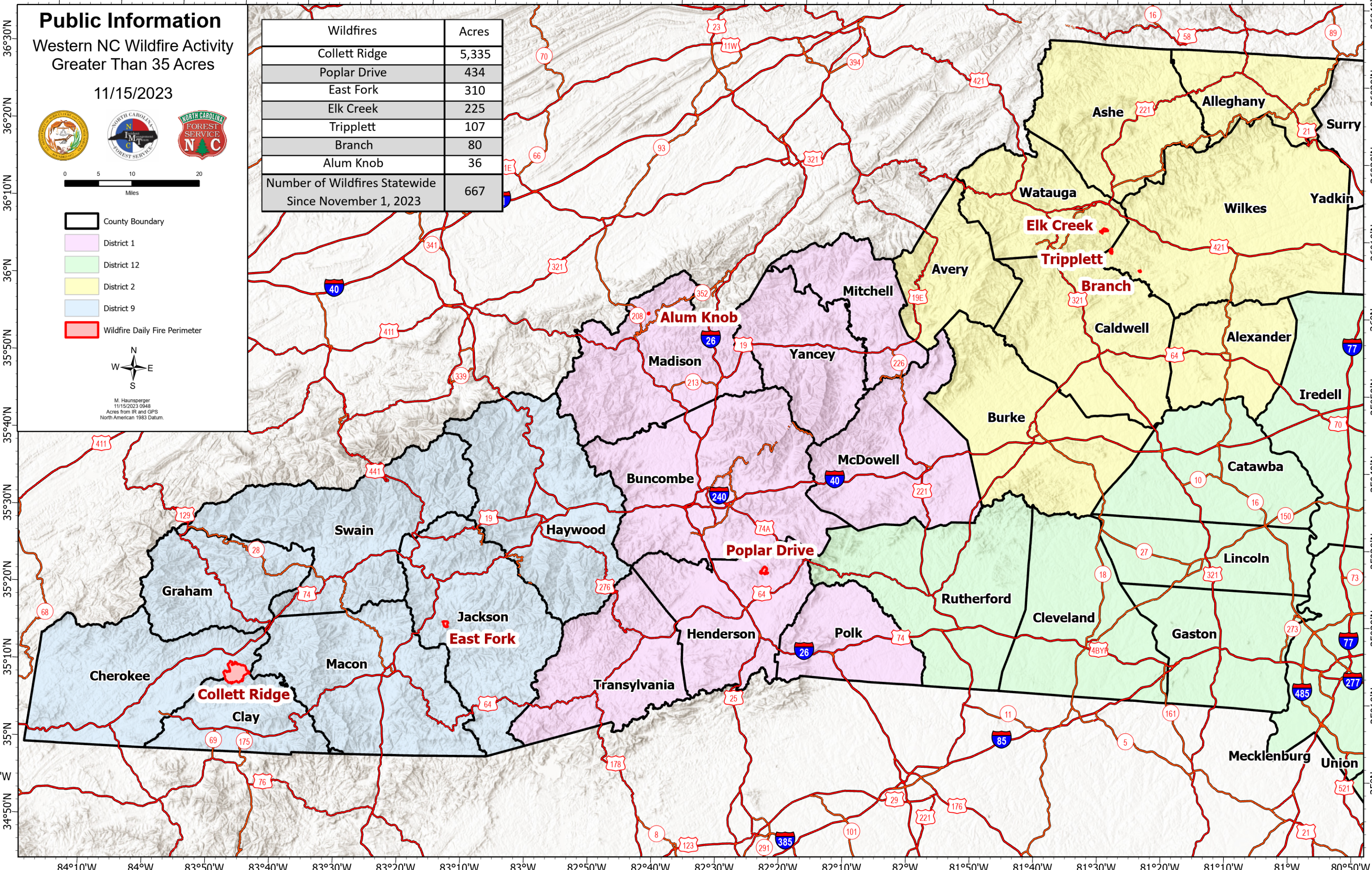


- County Boundary
- District 1
- District 12
- District 2
- District 9
- Wildfire Daily Fire Perimeter



M. Haunsperger  
11/15/2023 0948  
Acres from IR and GPS  
North American 1983 Datum.

Wildfires	Acres
Collett Ridge	5,335
Poplar Drive	434
East Fork	310
Elk Creek	225
Tripplett	107
Branch	80
Alum Knob	36
<b>Number of Wildfires Statewide Since November 1, 2023</b>	<b>667</b>



36°30'N  
36°20'N  
36°10'N  
36°N  
35°50'N  
35°40'N  
35°30'N  
35°20'N  
35°10'N  
35°N  
34°50'N

36°40'N  
36°30'N  
36°20'N  
36°10'N  
36°N  
35°50'N  
35°40'N  
35°30'N  
35°20'N  
35°10'N  
35°N  
34°50'N

84°10'W 84°W 83°50'W 83°40'W 83°30'W 83°20'W 83°10'W 83°W 82°50'W 82°40'W 82°30'W 82°20'W 82°10'W 82°W 81°50'W 81°40'W 81°30'W 81°20'W 81°10'W 81°W 80°50'W