

82°24.5'W 82°24'W 82°23.5'W 82°23'W 82°22.5'W


OPS Map

Poplar Drive


NC-NCS-230039

11/16/2023 Day Shift

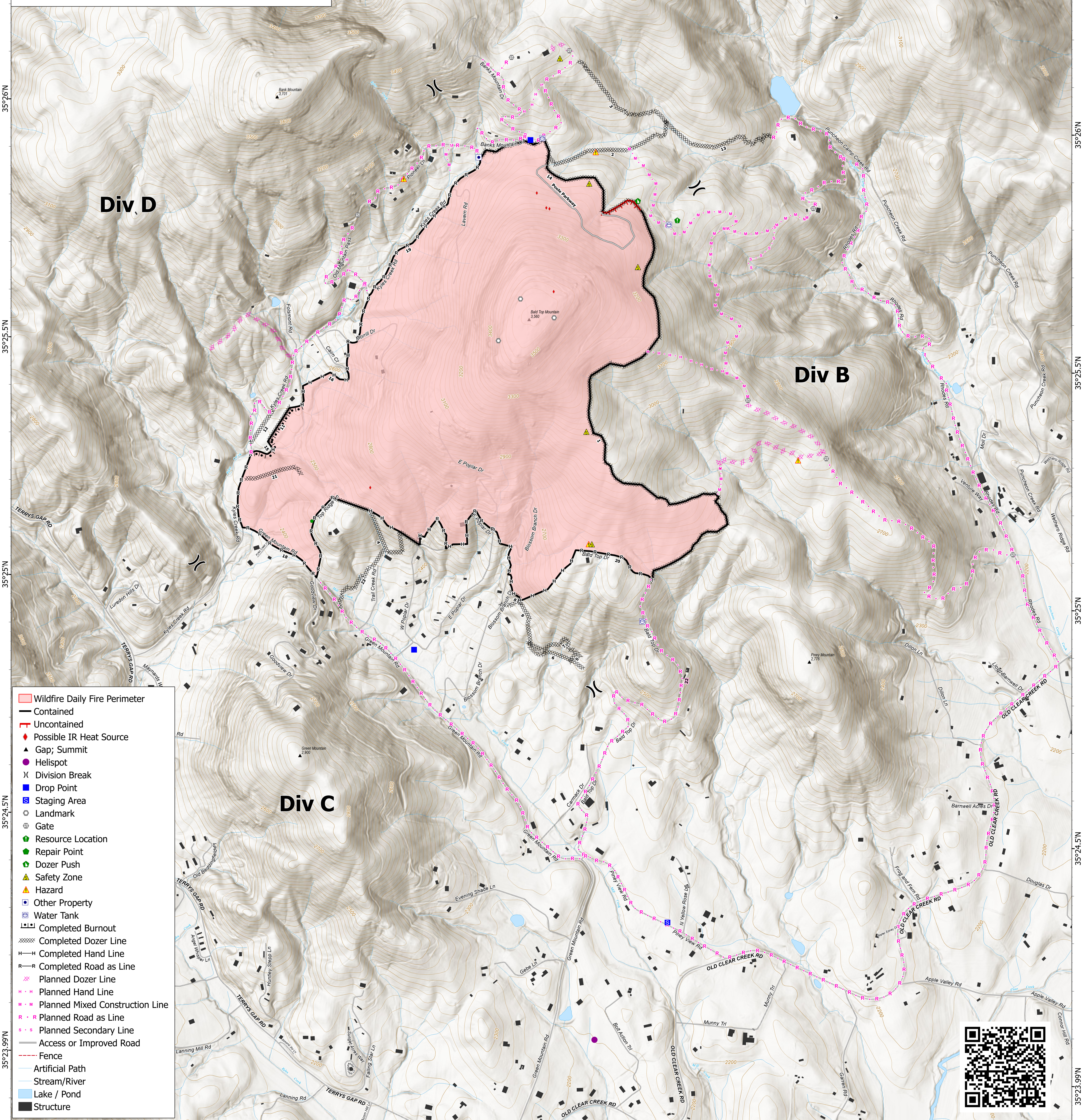
434 acres at 11/9/2023 @ 1632 hrs



0 500 1000 2000
Feet



NCFS IMT
11/15/2023 2030
Acres from IR and GPS
North American 1983 Datum.



- Wildfire Daily Fire Perimeter
- Contained
- Uncontained
- Possible IR Heat Source
- Gap; Summit
- Helispot
- Division Break
- Drop Point
- Staging Area
- Landmark
- Gate
- Resource Location
- Repair Point
- Dozer Push
- Safety Zone
- Hazard
- Other Property
- Water Tank
- Completed Burnout
- Completed Dozer Line
- Completed Hand Line
- Completed Road as Line
- Planned Dozer Line
- Planned Hand Line
- Planned Mixed Construction Line
- Planned Road as Line
- Planned Secondary Line
- Access or Improved Road
- Fence
- Artificial Path
- Stream/River
- Lake / Pond
- Structure



82°24.5'W 82°24'W 82°23.5'W 82°23'W 82°22.5'W

35°26.5'N 35°26'N 35°25.5'N 35°25'N 35°24.5'N 35°24'N 35°23.5'N 35°23'N 35°22.5'N

35°26.5'N 35°26'N 35°25.5'N 35°25'N 35°24.5'N 35°24'N 35°23.5'N 35°23'N 35°22.5'N