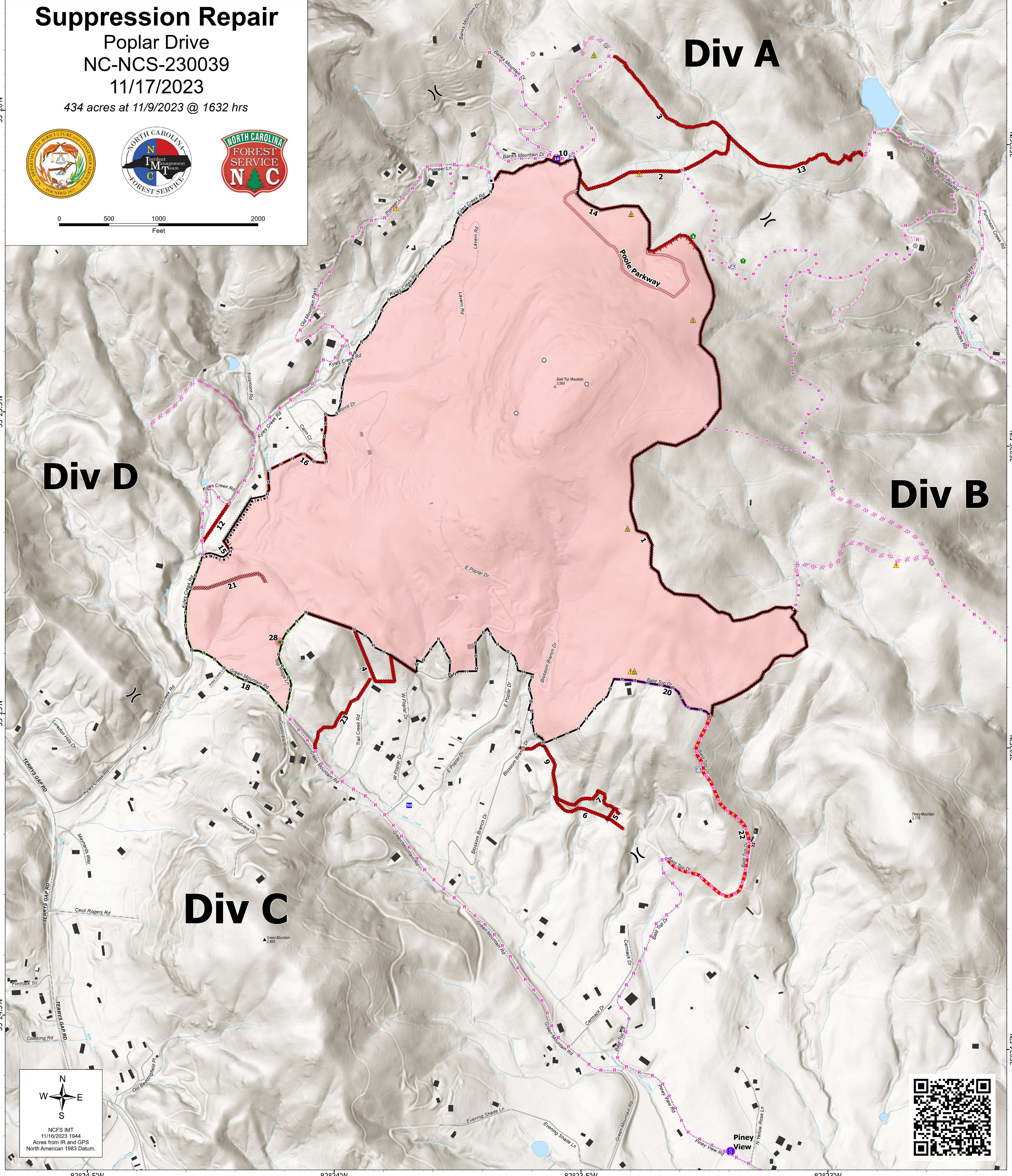
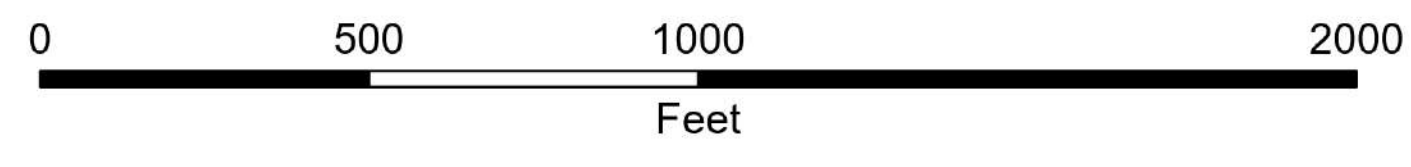


Suppression Repair

Poplar Drive
NC-NCS-230039

11/17/2023

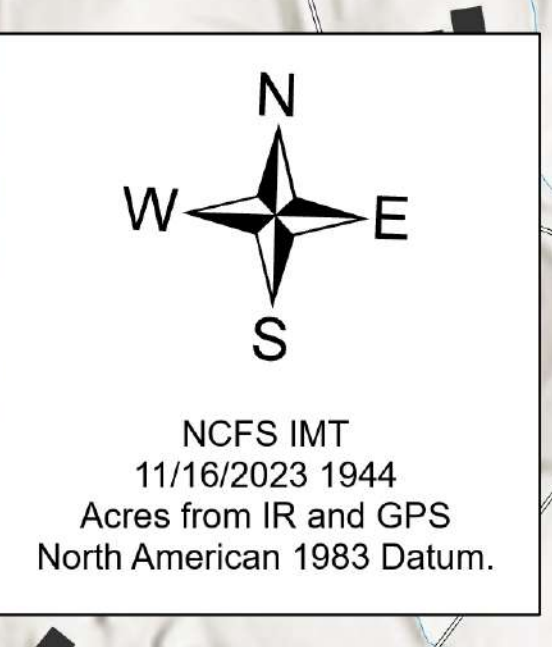
434 acres at 11/9/2023 @ 1632 hrs



FC Line Type	Label	Repair Status	Repair Comments
Completed Dozer Line	1	Repair Needed	Water bars
Completed Dozer Line	2	Repair Needed	Water bars
Completed Dozer Line	3	Repair Needed	Water bars
Completed Dozer Line	4	Repair Needed	Water bars
Completed Dozer Line	5	Repair Needed	Short steep section, water bars needed
Completed Dozer Line	6	Repair Needed	Grade berms on orchard side on contingency
Completed Dozer Line	7	Repair Needed	Water bars needed on steeper sections, line not that long
Completed Dozer Line	9	Repair Needed	Grade berms in areas. Not that bad mostly
Completed Dozer Line	23	Repair Needed	Talked with landowner existing path
Completed Dozer Line	12	Repair Needed	Waterbars where needed on slope.
Completed Hand Line	15	Repair Needed	Waterbars needed near creek. Rye grass seed where tied into creek.
Completed Hand Line	16	Repair Needed	Water bars where needed on slope. Water bars and rye grass seed where hand line ties into creek on either side.
Access or Improved Road	Pool Parkway	Repair Needed	Water bars where needed on slope.
Completed Dozer Line	13	Repair Needed	Water bars
Planned Road as Line	22	Repair Needed	Motor grader, dozer 6 way blade, or box blade needed to pull gravel out of ditch and crown road
Completed Dozer Line	14	Repair Needed	Water bars
Completed Dozer Line	21	Repair Needed	Moderate slope with sweeping turns; use judgement add water bars on failed dozer line
Completed Road as Line	20	Needs Assessment	Motor grader, dozer 6 way blade, or box blade needed to pull gravel out of ditch and crown road
Completed Road as Line	18	Completed - Inspected	Paved road with no visible damage. Burnt culvert under road. Marked with signage.

FC Point Type	Label	Repair Status	Latitude WGS84 DDM	Longitude WGS84 DDM	Repairs Needed
Drop Point	10	Repair Needed	35° 25.951' N	82° 23.400' W	25 Fraser fir seedlings needed to be replanted. Fill in with box blade and rye grass seed road shoulder Rye grass seed needed on road at division break.
Repair Point	28	Repair Needed	35° 25.135' N	82° 24.147' W	Yes, Landowners notified
Staging Area	Piney View	Needs Assessment	35° 24.316' N	82° 23.199' W	

<ul style="list-style-type: none"> — Contained — Uncontained ■ Wildfire Daily Fire Perimeter ▲ Gap; Summit ⋈ Division Break ■ Drop Point ■ Staging Area 	<ul style="list-style-type: none"> ○ Landmark ⊕ Gate 🌳 Resource Location 👷 Repair Point 👷 Dozer Push ⚠ Safety Zone ⚠ Hazard 	<ul style="list-style-type: none"> ■ Other Property ■ Water Tank ■ Completed Burnout ⊗ Completed Dozer Line — Completed Hand Line — Completed Road as Line — Planned Dozer Line 	<ul style="list-style-type: none"> — Planned Hand Line — Planned Mixed Construction Line — Planned Road as Line — Planned Secondary Line — Access or Improved Road — Fence ■ Lake / Pond 	<ul style="list-style-type: none"> ■ Structure ● Needs Assessment ● Repair Needed ● Needs Assessment ● Repair Needed ● Completed - Inspected
--	--	--	---	--



NCFS IMT
11/16/2023 1944
Acres from IR and GPS
North American 1983 Datum.