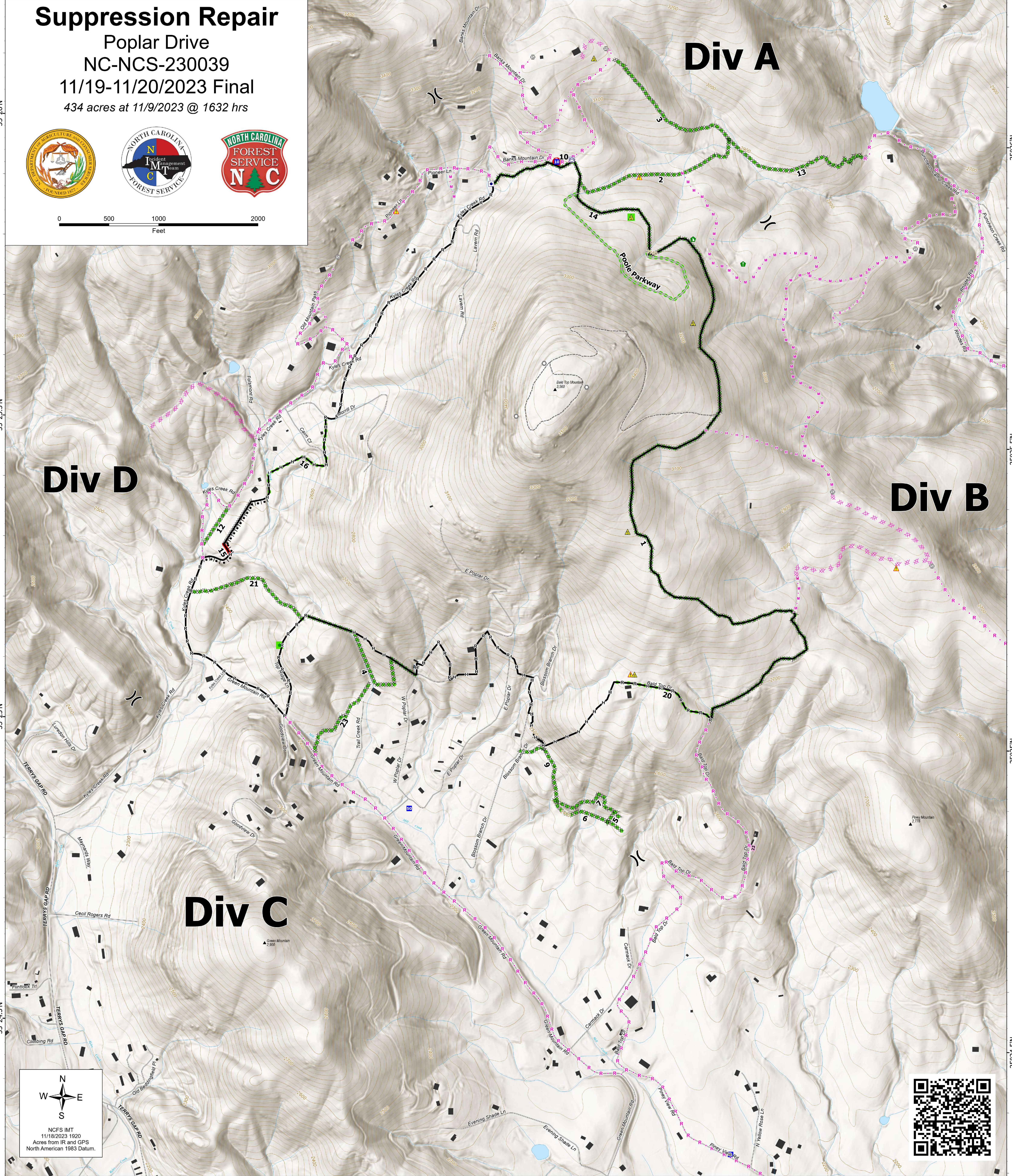
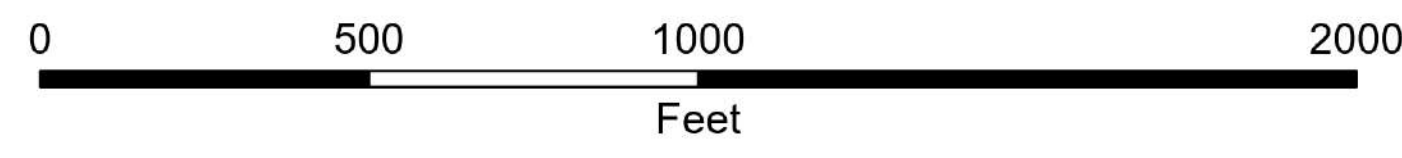


Suppression Repair

Poplar Drive
NC-NCS-230039

11/19-11/20/2023 Final

434 acres at 11/9/2023 @ 1632 hrs



FC Line Type	Label	Repair Status	Repair Comments
Completed Hand Line	15	Repair Needed	Inaccessible due to landowner. Waterbars needed near creek. Seed with rye grass near creek.
Completed Dozer Line	1	Completed - Inspected	Waterbars
Completed Dozer Line	2	Completed - Inspected	Waterbars
Completed Dozer Line	3	Completed - Inspected	Waterbars
Completed Dozer Line	4	Completed - Inspected	Waterbars
Completed Dozer Line	7	Completed - Inspected	Waterbars needed on steeper sections, line not that long
Completed Dozer Line	6	Completed - Inspected	Grade berms on orchard side on contingency
Completed Dozer Line	5	Completed - Inspected	Short steep section, water bars needed
Completed Dozer Line	9	Completed - Inspected	Grade berms in areas. Not that bad mostly
Completed Dozer Line	23	Completed - Inspected	Talked with landowner existing path
Completed Hand Line	12	Completed - Inspected	Waterbars where needed on slope.
Completed Hand Line	16	Completed - Inspected	Waterbars where needed on slope. Water bars and rye grass seed where hand line ties into creek on either side.
Access or Improved Road	Pooler Parkway	Completed - Inspected	Waterbars where needed on slope.
Completed Dozer Line	13	Completed - Inspected	Waterbars
Completed Road as Line	20	Completed - Inspected	Motor grader, dozer 6 way blade, or box blade needed to pull gravel out of ditch and crown road
Completed Dozer Line	14	Completed - Inspected	Waterbars
Completed Dozer Line	21	Completed - Inspected	Waterbars

FC Point Type	Label	Repair Status	Latitude WGS84 DDM	Longitude WGS84 DDM	Repairs Needed
Drop Point	10	Repair Needed	35° 25.951' N	82° 23.620' W	25 Fraser fir seedlings needed to be replanted. Fill in with box blade and rye grass seed road shoulder. Rye grass seed needed on road at division break.
Repair Point	28	Completed - Inspected	35° 25.135' N	82° 24.147' W	Landowners notified. Plastic culvert burned under Top Ridge Road
Safety Zone	29	Completed - Inspected	35° 25.864' N	82° 23.465' W	

— Contained	● Repair Point	—+— Completed Hand Line	--- Fence
▲ Gap; Summit	● Dozer Push	R—R Completed Road as Line	----- Other
) Division Break	▲ Safety Zone	××× Planned Dozer Line	■ Lake / Pond
■ Drop Point	▲ Hazard	H—H Planned Hand Line	■ Structure
■ Staging Area	■ Other Property	M—M Planned Mixed Construction Line	● Repair Needed
○ Landmark	■ Water Tank	R—R Planned Road as Line	■ Completed - Inspected
○ Gate	■ Completed Burnout	S—S Planned Secondary Line	■ Repair Needed
● Resource Location	××× Completed Dozer Line	— Access or Improved Road	● Completed - Inspected

