

POPLAR DRIVE FIRE

NC-NCS-230037
HENDERSON COUNTY
District 1

Fiori Time Code: G/T/F 1434



November 8-9, 2023

Wednesday-Thursday

Operational Period Day 0700-1900 hrs.

Operational Period Night 1900-0700 hrs.



INCIDENT OBJECTIVES	1. INCIDENT NAME Poplar Drive Fire	2. DATE PREPARED 11/7/23	3. TIME PREPARED 1800									
4. OPERATIONAL PERIOD (DATE/TIME) November 8-9, 2023 Day 0700-1900 / Night 1900-0700												
5. GENERAL CONTROL OBJECTIVES FOR THE INCIDENT (INCLUDE ALTERNATIVES) <ol style="list-style-type: none"> 1. Provide for safety of our firefighters, assigned resources and public through adequate work rest ratios, risk assessments, hazard mitigation and information dissemination. 2. Contain the fire North of Green Mountain Road, East of Kyles Creek Road, South of N. Bearwallow Road and West of Bearwallow Mtn. Road. 3. Manage fire in cost effective manner. Maintain accurate cost estimates of the incident and provide daily updates through morning reports and afternoon situation reports. 4. Maintain a safety culture within all aspects of the IMT. 5. Ensure unified information release and communications of fire status is provided all agencies, cooperators and public. 6. Assist North Carolina Forest Service Mountain Region in planning, resource tracking, and financial tracking of the R3 2023 Fall IA support Resources. 												
6. WEATHER FORECAST FOR OPERATIONAL PERIOD See attached forecast												
7. GENERAL SAFETY MESSAGE <u>HYDRATION/HEAT STRESS</u>- drink often and drink a lot, before you get thirsty. 4:1 water to sports drinks.												
8. ATTACHMENTS (√ IF ATTACHED) <table style="width: 100%; border: none;"> <tr> <td><input checked="" type="checkbox"/> ORGANIZATION LIST (ICS 203)</td> <td><input checked="" type="checkbox"/> MEDICAL PLAN (ICS 206)</td> <td><input checked="" type="checkbox"/> SAFETY MESSAGE</td> </tr> <tr> <td><input checked="" type="checkbox"/> ASSIGNMENT LIST (ICS 204)</td> <td><input checked="" type="checkbox"/> INCIDENT MAP</td> <td><input checked="" type="checkbox"/> PHONE LIST</td> </tr> <tr> <td><input checked="" type="checkbox"/> COMMUNICATIONS PLAN (ICS 205)</td> <td><input type="checkbox"/> TRAVEL MAP</td> <td><input type="checkbox"/></td> </tr> </table>				<input checked="" type="checkbox"/> ORGANIZATION LIST (ICS 203)	<input checked="" type="checkbox"/> MEDICAL PLAN (ICS 206)	<input checked="" type="checkbox"/> SAFETY MESSAGE	<input checked="" type="checkbox"/> ASSIGNMENT LIST (ICS 204)	<input checked="" type="checkbox"/> INCIDENT MAP	<input checked="" type="checkbox"/> PHONE LIST	<input checked="" type="checkbox"/> COMMUNICATIONS PLAN (ICS 205)	<input type="checkbox"/> TRAVEL MAP	<input type="checkbox"/>
<input checked="" type="checkbox"/> ORGANIZATION LIST (ICS 203)	<input checked="" type="checkbox"/> MEDICAL PLAN (ICS 206)	<input checked="" type="checkbox"/> SAFETY MESSAGE										
<input checked="" type="checkbox"/> ASSIGNMENT LIST (ICS 204)	<input checked="" type="checkbox"/> INCIDENT MAP	<input checked="" type="checkbox"/> PHONE LIST										
<input checked="" type="checkbox"/> COMMUNICATIONS PLAN (ICS 205)	<input type="checkbox"/> TRAVEL MAP	<input type="checkbox"/>										
9. PREPARED BY (RESOURCE UNIT LEADER) Austin Harriett		10. APPROVED BY (INCIDENT COMMANDER) Kevin Harvell										

ORGANIZATION ASSIGNMENT LIST		9. Operations Section	
1. Incident Name <h1 style="text-align: center;">Poplar Drive Fire</h1>		Ops Day	D.LaFon / D. Vigil(t) / B. Rogers (t) / K. Waldrup M. Ostrander
		Ops Night	Rob Davis / Taylor Marsh
		a. Branch I Days	
2. Date 11/6/23	3. Time 1700	Branch Director	
4. Operational Period: November 8-9, 2023 Day 0700-1900 Night 1900-0700		Division/Group	A/D Structural v4/1 H. Blake / J. Ward
		Division/Group	B Structural 3 D. Poole / C. Meyers
5. Command and General Staff		Division/Group	C Structural 2 L. Wicker
Incident Commander	Kevin Harvell	Division/Group	
Deputy IC		Division/Group	
Safety Officers	Robbie Perry / Greg Riggs Chad Brandon(t)	b. Branch II Night	
Information Officers	Carrie McCullen / Philip Jackson	Branch Director	
Liaison Officers	Jason Guidry / James Kimes	Division/Group	A / B / C / D B. Walker
6. Agency Representatives		Division/Group	4/3/2/1 Structural J. Fore/ J. Winfield / C. Myers
Agency	Name		
Henderson EM	Jimmy Brissie		
OSFM	Davie Summey/Terry Young	c. Branch III	
NCFS	Michael Cheek	Branch Director	
Edneyville Fire & Rescue	Robert Griffin	Division/Group	
Henderson Sheriff	Lowell Griffin	Division/Group	
7. Planning Section		Division/Group	
Chief	Dennis Register	Division/Group	
Deputy Structure	Victoria Cortes	Division/Group	
Resources Unit	Austin Harriett	d. Branch IV	
Resource Unit Structure	David Morgan	Branch Director	
Situation Unit	Richard Cockerham	Division/Group	
Documentation	Robin Roberson	Division/Group	
Demobilization Unit	Lisa	Division/Group	
Fire Behavior Analyst		Division/Group	
Field Observers	Michael Petruncio	Division/Group	
GIS	Matthew Bishop / Matthew Haunsperger / Aaron Chamblee(t)	Division/Group	
Status Check-in	John Willis	e. Other Groups	
8. Logistics Section		UAS Group	
Chief	Jeremiah Greene/Jamie Logan	f. Air Operations Branch	
Deputy Structure	Tim McFalls	THSP / Air OPS	Jonathan Ross
Deputy Structure	Ed McDade	Air Attack Supervisor	
Supply Unit	Patrick Raynor	Air Support Supervisor	
Facilities Unit	Derek Arney	Helicopter Coordinator	
Ground Support Unit	Frankie Britt	Air Tanker Coordinator	
Communications Unit	Jimmy Meadows Jr.	Helibase Managers	
Communication Tech	Bruce Scott	10. Finance Section	
Radio Operator	Robin Weber(t)	Chief	Ron Myers / Bridgit Gallagher(t)
Equipment Manager	Wayne Pugh	Deputy	
Ordering Manager	Jason Wade(t)	Time Unit	
Food Unit	Clyde Leggins	Time Unit	Renee Strickland
Medical Unit	Stewart Niemyer	Cost Unit	Bridgit Gallagher
Communication Unit	Justin Rhodes	Equipment Time Recorder	Jeana McDuffie
Director Structure	Toby Linville	Personel Time Recorder	Kristi Wilson
Supply Unit Structure	Ronnie Kilby	Prepared by (Resource Unit Leader)	
Mechanics		Austin Harriett	

Poplar Drive Fire Weather Forecast Wednesday, November 8:

Spot Forecast for Poplar Drive Fire...NC Forest Service
National Weather Service Greenville-Spartanburg SC
554 PM EST Tue Nov 7 2023

DISCUSSION...

Dry high pressure will continue over the western Carolinas and northeast Georgia through Thursday. Temperatures will run well above normal with daily records in jeopardy through Thursday. A cold front will arrive from the northwest on Friday and bring the chance for at least scattered showers to our area Friday and Friday night, but appreciable rainfall is not expected. The front will move southeast of the region over the weekend with much cooler and mainly dry weather continuing into early next week.

WEDNESDAY...

Sky/weather.....Sunny (5-15 percent).
Max temperature.....Around 69.
Min humidity.....53 percent.
Wind (20 ft).....Northwest winds 7 to 8 mph shifting to the south 5 to 13 mph in the late morning and afternoon.
Mixing height.....3500 ft AGL.
Transport winds.....North 6 to 9 mph shifting to the south 5 to 13 mph in the late morning and afternoon.
Smoke dispersal.....Poor (2500 knot-ft) early in the morning increasing to good (38100 knot-ft) in the afternoon.
Pcpn amount.....0.00 inches.

TIME (EST)	6 AM	8 AM	10 AM	NOON	2 PM	4 PM
Temp.....	43	49	58	68	69	68
Dewpoint.....	41	44	46	52	52	51
RH.....	93	82	64	56	54	55
20 ft wind.....	NW 8	W 7	S 5	S 8	S 12	S 13
20 ft wind gust.	14	12	7	13	18	21
Mix hgt (ft)....	500	400	600	3100	3500	3100
Transport wind..	NW 9	N 8	S 5	S 9	S 13	S 13
VRate kt-ft/10004		3	3	25	38	34

WEDNESDAY NIGHT...

Sky/weather.....Clear (0-10 percent) then becoming partly cloudy (20-30 percent).
Min temperature.....Around 54. Max humidity.....84 percent.
Wind (20 ft).....Southwest winds 7 to 12 mph shifting to the west around 8 mph overnight. Mixing height....400 ft AGL.
Transport winds.....Southwest 10 to 13 mph shifting to the west around 12 mph overnight.
Pcpn amount.....0.00 inches.

TIME (EST)	6 PM	8 PM	10 PM	MIDNGT	2 AM	4 AM
Temp.....	62	58	55	55	55	55
Dewpoint.....	51	50	51	49	49	49
RH.....	69	77	84	81	80	81
20 ft wind.....	SW 12	SW 9	SW 9	W 8	W 8	W 8
20 ft wind gust.	18	13	14	13	13	14
Mix hgt (ft)....	600	400	500	500	500	500
Transport wind..	S 12	S 12	SW 12	W 13	W 12	W 12

.THURSDAY...

Sky/weather.....Mostly sunny (40-50 percent).
Max temperature.....Around 72.
Min humidity.....56 percent.
Wind (20 ft).....West winds 8 to 9 mph.
Mixing height.....3800 ft AGL.
Transport winds.....Northwest 9 to 14 mph.
Smoke dispersal.....Poor (5100 knot-ft) early in the morning increasing to good (45400 knot-ft) in the afternoon.
Pcpn amount.....0.00 inches.

HEALTH AND SAFETY MESSAGE

SAFETY starts with **YOU**

Remember... Keep safety in the Top 5 of your highest priorities!

INCIDENT: Poplar Drive Fire

DATE/SHIFT: November 8, 2023

Major Hazards and Risks: Driving, Slips Trips & Falls, IWI, Communications

Driving: Use caution when driving. Be a defensive driver. Follow all traffic laws. Drive at reduced speeds when on curvy sections of road or around switch backs. Plan for the unexpected. Watch out for other drivers who are not watching out for you. Use passengers as spotters when driving or backing.

Slips, Trips, & Falls: Be deliberate with what you are doing. Pay attention to where you are and what is around you. Look for tripping hazards on the ground. Ensure that you have good footing when walking and stepping over rocks, logs, and across ditches and streams. Use trees and equipment to try to maintain three points of contact when able to do so when working on uneven ground.

- Don't take chances. Walk around uneven ground or obstacles.
- Maintain three points of contact when climbing on equipment or getting in or out of large vehicles such as engines and transports.

Incident Within and Incident (IWI): Please review the IWI protocol located in the IAP. Make sure everyone is aware of its contents and knows what to do in the event of a medical emergency or any other type of emergency. Make sure that the injured party is cared for and secure the scene to ensure that there is no further risk to responders or fire fighters.

- Contact structural fire overhead in the event of a medical emergency or injury. Advise them of the location of the incident and advise them of the need for EMS. Follow IWI protocols for advising the IMT of the situation.
- Utilize FOX 1 to contact structural fire to get EMS in route.

Communications: Make sure that you are giving or receiving clear instructions. If you are unsure of what you are supposed to do, ask. It is likely that if you are unsure of the plan, someone else is also. Use the Briefing Checklist located on the inside of the back cover of your IRPG when giving and receiving a briefing to ensure that nothing is missed. Allow time for Q&A following a briefing to encourage questions.

- Make sure that everyone is aware of the current Comm. Plan located in the IAP.

Give clear instructions and be sure they are understood!

Incident Safety Officers:

Robbie Perry (SOFC), Greg Riggs (SOFC), Chad
Brandon (SOFC-T)



DIVISION ASSIGNMENT LIST			1. BRANCH Day		2. Division/Group Alpha / Delta Structural 4 / 1		
3. Incident Name Poplar Drive Fire			4. Operational Period Date: 11/8/23 Time: 0700-1900				
5. Operations Personnel							
Operations Chief	D. LaFon / D. Vigil(t) / B. Rogers		Division NCFS		H. Blake		
Branch Director			Division Structural		J. Ward		
6. Resources Assigned This Period							
Strike Team/Task Force/ Resource Designator	Leader	Last Shift	Resource #	Number Persons	Trans Needed	Drop Off PT / Time	Pick Up Pt / Time
VFD ENG	TBD						
DOZ 1X3	Gravley			1			
Crew Module Dupont	Mike Santucci			3			
UTV	Charlie Frye			1			
Structural							
Fletcher Brush				2			
Wake Forest Brush 1				2			
Wake Forest Brush 2				2			
Fairview Brush				2			
Currituck Engine				4			
Fletcher Engine				2			
Morrisville Engine				2			
Dana Tanker				2			
Fletcher Tanker				1			
Etowah Tanker				1			
Fletcher UTV				1			
Fairview UTV				2			
7. Control Operations							
<ol style="list-style-type: none"> Task = Mop-up and improve handline & dozer line within 1 chain of fireline. Purpose = Ensure and maintain containment. Ed State = Safe & efficient removal of heat by 50% within 1 chain of the fireline. 							
8. Special Instructions							
<ol style="list-style-type: none"> Maintain full accountable of resources, equipment, and supplies. Maintain safe working distance from equipment. In the event of an IWI, utilize Fox 1 to contact structural resources to get EMS. Follow IWI protocol in IAP. 							
9. Division/Group Communication Summary							
Function	Frequency	System	Channel	Function	Frequency	System	Channel
Command	See Communication Plan			Logistics	See Communication Plan		
Tactical Div/Group	See Communication Plan			Air to Ground	See Communication Plan		
Prepared By (Resource Unit Leader)		Approved By (Planning Sect. Ch.)		Date		Time	
Austin Harriett		Dennis Register		11/7/23		1800	

DIVISION ASSIGNMENT LIST			1. BRANCH Day		2. Division/Group Bravo Structural 3		
3. Incident Name Poplar Drive Fire			4. Operational Period Date: 11/8/23 Time: 0700-1900				
5. Operations Personnel							
Operations Chief	D. LaFon / D. Vigil(t) / B. Rogers		Division NCFS		D. Poole		
Branch Director			Division Structural		C. Meyers		
6. Resources Assigned This Period							
Strike Team/Task Force/ Resource Designator	Leader	Last Shift	Resource #	Number Persons	Trans Needed	Drop Off PT / Time	Pick Up Pt / Time
ENG6ST	833						
ENG6	1071						
SKG2	Winslow			1			
DOZ BridgeX1	Lister			1			
Crew Module Bridge	TBD			3			
UTV	Unstaffed						
Structural							
West Buncombe Brush				2			
Valley Hill Brush				1			
Skyland Brush				2			
Enka Brush				2			
Denver Tanker				2			
Edneyville Tanker				2			
Mountain Home UTV				0			
7. Control Operations 1. Task = Mop-up and improve handline & dozer line within 1 chain of fireline. 2. Purpose = Ensure and maintain containment. 3. End State = Safe & efficient removal of heat by 50% within 1 chain of the fireline.							
8. Special Instructions 1. Maintain full accountable of resources, equipment, and supplies. 2. Maintain safe working distance from equipment. 3. In the event of an IWI, utilize Fox 1 to contact structural resources to get EMS. 4. Follow IWI protocol in IAP.							
9. Division/Group Communication Summary							
Function	Frequency	System	Channel	Function	Frequency	System	Channel
Command	See Communication Plan			Logistics	See Communication Plan		
Tactical Div/Group	See Communication Plan			Air to Ground	See Communication Plan		
Prepared By (Resource Unit Leader)		Approved By (Planning Sect. Ch.)		Date		Time	
Austin Harriett		Dennis Register		11/7/23		1800	

DIVISION ASSIGNMENT LIST				1. BRANCH		2. Division/Group			
				Day		Charlie Structural 2			
3. Incident Name Poplar Drive Fire				4. Operational Period Day					
				Date: 11/8/23		Time: 0700-1900			
5. Operations Personnel									
Operations Chief		D. LaFon / D. Vigil(t) / B. Rogers		Division NCFS			L. Wicker		
Branch Director				Division Structural					
6. Resources Assigned This Period									
Strike Team/Task Force/ Resource Designator		Leader		Last Shift	Resource #	Number Persons	Trans Needed	Drop Off PT / Time	Pick Up Pt / Time
ENG6ST		A. Matthews				1			
ENG6		1330				2			
ENG6		1340				2			
VFD ENG		TBD				1			
Crew Module Bridge		TBD				3			
UTV		Unstaffed							
Structural									
Etowah Brush						2			
Denver Brush						2			
Orange Rural Brush						2			
Mountain Home Brush						2			
Orange Rural Engine						2			
Summerfield Tanker						2			
Cedar Mountain UTV						0			
7. Control Operations									
<ol style="list-style-type: none"> 1. Task = Mop-up and improve handline & dozer line within 1 chain of fireline. 2. Purpose = Ensure and maintain containment. 3. End State = Safe & efficient removal of heat by 50% within 1 chain of the fireline. 									
8. Special Instructions									
<ol style="list-style-type: none"> 1. Maintain full accountable of resources, equipment, and supplies. 2. Maintain safe working distance from equipment. 3. In the event of an IWI, utilize Fox 1 to contact structural resources to get EMS. 4. Follow IWI protocol in IAP. 									
9. Division/Group Communication Summary									
Function	Frequency	System	Channel	Function	Frequency	System	Channel		
Command	See Communication Plan			Logistics	See Communication Plan				
Tactical Div/Group	See Communication Plan			Air to Ground	See Communication Plan				
Prepared By (Resource Unit Leader)		Approved By (Planning Sect. Ch.)			Date		Time		
Austin Harriett		Dennis Register			11/7/23		1800		

DIVISION ASSIGNMENT LIST				1. BRANCH Night		2. Division/Group Alpha/Bravo/Charlie/Delta Structural 4/3/2/1			
3. Incident Name Poplar Drive Fire				4. Operational Period Date: 11/8/23		Time: 1900-0700			
5. Operations Personnel									
Operations Chief		Rob Davis / Deral Raynor		Division NCFS			Bill Walker		
Branch Director				Division Structural			J. Fore / J. Whitfield / C. Myers		
6. Resources Assigned This Period									
Strike Team/Task Force/ Resource Designator		Leader		Last Shift	Resource #	Number Persons	Trans Needed	Drop Off PT / Time	Pick Up Pt / Time
TFLD		D. Rooks			O-24	1	No		
ENG6		R. Brown / A. Kittle			E-30	2	No		
ENG6		M. Thomas/ T. Mathis			E-31	2	No		
ENG6		B. Szilvay / E. Prevost			E-32	2	No		
ENG6		Z. Prevette / M. Harkins			E-33	2	No		
ENG6		P. Harrison/ H. Newsome			E-34	2	No		
R-1 Crew Module		D. Glazewski		11/18	C-1/C-2	9	No		
Structural									
OSFM Paul Ward		STL				1			
Fletcher Brush Truck						2			
Laurinburg FD Brush Truck						3			
Fairview Brush Truck						3			
Pamlico Fire Engine						2			
Lake Junaluska Tanker						2			
Pamlico Fire UTV						2			
Fletcher Fire & Rescue UTV						1			
Fletcher Fire & Rescue Engine						2			
Fairview Fire UTV						2			
7. Control Operations									
<ol style="list-style-type: none"> 1. Task = Mop-up and improve handline & dozer line within 1 chain of fireline. 2. Purpose = Ensure and maintain containment. 3. End State = Safe & efficient removal of heat by 50% within 1 chain of the fireline. 									
8. Special Instructions									
<ol style="list-style-type: none"> 1. Maintain full accountable of resources, equipment, and supplies. 2. Maintain safe working distance from equipment. 3. In the event of an IWI, utilize Fox 1 to contact structural resources to get EMS. 4. Follow IWI protocol in IAP. 									
9. Division/Group Communication Summary									
Function	Frequency	System	Channel	Function	Frequency	System	Channel		
Command	See Communication Plan			Logistics	See Communication Plan				
Tactical Div/Group	See Communication Plan			Air to Ground	See Communication Plan				
Prepared By (Resource Unit Leader) Austin Harriett		Approved By (Planning Sect. Ch.) Dennis Register			Date 11/7/23		Time 1800		

DIVISION ASSIGNMENT LIST				1. BRANCH Night		2. Division/Group Alpha/Bravo/Charlie/Delta Structural 4/3/2/1			
3. Incident Name Poplar Drive Fire				4. Operational Period Date: 11/8/23		Time: 1900-0700			
5. Operations Personnel									
Operations Chief		R. Davis / D. Raynor		Division NCFS			B. Walker		
Branch Director				Division Structural			J. Fore / J. Whitfield / C. Myers		
6. Resources Assigned This Period									
Strike Team/Task Force/ Resource Designator		Leader		Last Shift	Resource #	Number Persons	Trans Needed	Drop Off PT / Time	Pick Up Pt / Time
Structural									
Lake Junaluska Brush						2			
Elon FD Brush						2			
Conover Engine						4			
Elon FD Tanker						1			
Swannanoa FD Brush						2			
Enka FD Brush						2			
East Howellsville Brush						3			
Black Mountain Brush						2			
Laurinburg FD Tanker						2			
Rockwell FD Tanker						2			
HCRS Ranger 24-2 UTV						0			
Cedar Mountain UTV						0			
7. Control Operations									
<ol style="list-style-type: none"> 1. Task = Mop-up and improve handline & dozer line within 1 chain of fireline. 2. Purpose = Ensure and maintain containment. 3. End State = Safe & efficient removal of heat by 50% within 1 chain of the fireline. 									
8. Special Instructions									
<ol style="list-style-type: none"> 1. Maintain full accountable of resources, equipment, and supplies. 2. Maintain safe working distance from equipment. 3. In the event of an IWI, utilize Fox 1 to contact structural resources to get EMS. 4. Follow IWI protocol in IAP. 									
9. Division/Group Communication Summary									
Function	Frequency	System	Channel	Function	Frequency	System	Channel		
Command	See Communication Plan			Logistics	See Communication Plan				
Tactical Div/Group	See Communication Plan			Air to Ground	See Communication Plan				
Prepared By (Resource Unit Leader) Austin Harriett		Approved By (Planning Sect. Ch.) Dennis Register			Date 11/7/23		Time 1800		

INCIDENT RADIO COMMUNICATIONS PLAN				1. Incident Name Poplar Drive Fire		2. Date/ Time Prepared 11/7/23 16:00		3. Operational Period Date/Time 11/8-9/23 Day/Night Shift	
4. Basic Radio Channel Utilization Mode: W=Wideband, N=Narrowband, D=Digital, M=Mixed, T=Trunked									
Radio Type	Channel	Function	Frequency	Tone	Mode	Assignment	Remarks		
Viper	Events Ch Fox1	NCFS Operations	RX: 800MHz TX: 800MHz		T	Command Communications	FD / NCFS Interoperability Comms		
Viper	Events Ch Fox2	NCFS Logistics	RX: 800MHz TX: 800MHz		T	Logistical Communications	NCFS Comms		
VHF	Grp14 INC Ch1	NCFS Tactical	RX: 151.4000 TX: 151.4000	136.5 136.5	N	NCFS All Divisions	NCFS Comms		
Viper	Events Ch Bravo1	FD Operations	RX: 800MHz TX: 800MHz		T	FD Div 4/1 - NCFS Div A/D	FD Comms		
Viper	Events Ch Bravo2	FD Operations	RX: 800MHz TX: 800MHz		T	FD Div 2 - NCFS Div C	FD Comms		
Viper	Events Ch Bravo3	FD Operations	RX: 800MHz TX: 800MHz		T	FD Div 3 - NCFS Div B	FD Comms		
VHF	EM Ops1	FD Logistics	RX: TX:		N	FD Logistics	FD Comms		
VHF	Grp14 INC Ch8	Aviation	RX: 171.5750 TX: 171.5750	131.8 131.8	N	NC Air to Ground	NCFS Comms		
VHF	Event Alpha1	FD Command	RX: TX:		N	FD Command	FD Comms		
			RX: TX:						
			RX: TX:						
			RX: TX:						
			RX: TX:						
			RX: TX:						
VHF	Inc 15	Air Guard	RX: 168.6250 TX: 168.6250	110.9	N	USFS Air Guard Channel			
			RX: TX:						
5. Prepared by (Communications Unit) Jimmy Meadows COML									

MEDICAL PLAN (ICS 206)

1. Incident Name:	2. Operational Period: Date From: _____ Time From: _____	Date To: _____ Time To: _____
--------------------------	--	----------------------------------

3. Medical Aid Stations:			
Name	Location	Contact Number(s)/Frequency	Paramedics on Site?
			<input type="checkbox"/> Yes <input type="checkbox"/> No
			<input type="checkbox"/> Yes <input type="checkbox"/> No
			<input type="checkbox"/> Yes <input type="checkbox"/> No
			<input type="checkbox"/> Yes <input type="checkbox"/> No
			<input type="checkbox"/> Yes <input type="checkbox"/> No
			<input type="checkbox"/> Yes <input type="checkbox"/> No

4. Transportation (indicate air or ground):			
Ambulance Service	Location	Contact Number(s)/Frequency	Level of Service
			<input type="checkbox"/> ALS <input type="checkbox"/> BLS
			<input type="checkbox"/> ALS <input type="checkbox"/> BLS
			<input type="checkbox"/> ALS <input type="checkbox"/> BLS
			<input type="checkbox"/> ALS <input type="checkbox"/> BLS

5. Hospitals:							
Hospital Name	Address, Latitude & Longitude if Helipad	Contact Number(s)/Frequency	Travel Time		Trauma Center	Burn Center	Helipad
			Air	Ground			
					<input type="checkbox"/> Yes Level: _____	<input type="checkbox"/> Yes <input type="checkbox"/> No	<input type="checkbox"/> Yes <input type="checkbox"/> No
					<input type="checkbox"/> Yes Level: _____	<input type="checkbox"/> Yes <input type="checkbox"/> No	<input type="checkbox"/> Yes <input type="checkbox"/> No
					<input type="checkbox"/> Yes Level: _____	<input type="checkbox"/> Yes <input type="checkbox"/> No	<input type="checkbox"/> Yes <input type="checkbox"/> No
					<input type="checkbox"/> Yes Level: _____	<input type="checkbox"/> Yes <input type="checkbox"/> No	<input type="checkbox"/> Yes <input type="checkbox"/> No
					<input type="checkbox"/> Yes Level: _____	<input type="checkbox"/> Yes <input type="checkbox"/> No	<input type="checkbox"/> Yes <input type="checkbox"/> No

6. Special Medical Emergency Procedures: <input type="checkbox"/> Check box if aviation assets are utilized for rescue. If assets are used, coordinate with Air Operations.

7. Prepared by (Medical Unit Leader): Name: _____	Signature: <i>Stewart Niemyer</i>	
8. Approved by (Safety Officer): Name: _____	Signature: <i>Robbie Perry</i>	
ICS 206	IAP Page _____	Date/Time: _____

AIR OPERATIONS SUMMARY (ICS 220)

1. Incident Name:		2. Operational Period: Date From: _____ Date To: _____ Time From: _____ Time To: _____		3. Sunrise: _____ Sunset: _____		
4. Remarks (safety notes, hazards, air operations special equipment, etc.):		5. Ready Alert Aircraft: Medivac: _____ New Incident: _____		6. Temporary Flight Restriction Number: Altitude: _____ Center Point: _____		
		8. Frequencies:		9. Fixed-Wing (category/kind/type, make/model, N#, base): Air Tactical Group Supervisor Aircraft: _____		
		AM		FM		
		Air/Air Fixed-Wing				
		Air/Air Rotary-Wing – Flight Following				
		Air/Ground				
		Command		Other Fixed-Wing Aircraft:		
		Deck Coordinator				
		Take-Off & Landing Coordinator				
		Air Guard				
7. Personnel:						
Name:		Phone Number:				
Air Operations Branch Director						
Air Support Group Supervisor						
Air Tactical Group Supervisor						
Helicopter Coordinator						
THSP Air OPS						
10. Helicopters (use additional sheets as necessary):						
FAA N#	Category/Kind/Type	Make/Model	Base	Available	Start	Remarks
11. Prepared by: Name: _____		Position/Title: _____		Signature: _____		
ICS 220, Page 1		Date/Time: _____				

2023 R-3 IA Support – Finance Information

Submit CTRs and Shift Tickets DAILY, hard copies or electronic acceptable.

Finance email: ncfs.imt.finance@ncagr.gov

- If you are working in the field, not the ICP, include the **Fire Name** and **District** you are assigned to in the remarks section of all CTRs and STs.
- Include dollar amount of any fuel purchased on incident in **Box 14 Remarks** on the shift ticket.
- Please show travel time on your documents and include **TRAVEL** in remarks.
- Legibly complete your CTRs and Equipment Shift Tickets using the examples below.
- Make sure you use your legal name (not a nickname) on ALL documentation.
- Only one day per CTR/Equipment Shift Ticket.
- Make sure your incident supervisor signs your tickets before submitting them to finance.

CREW TIME REPORT					
1) CREW NAME		2) CREW NUMBER O-12			
3) OFFICE RESPONSIBLE FOR FIRE NCFS		4) FIRE NAME 2023 R-3 IA Support		5) FIRE NUMBER NC-NCS-230037	
RE-MARKS NO.	NAME OF EMPLOYEE	CLASSIFICATION	DATE 11-6/23		DATE
			Military Time	Military Time	
T	Chester Von Wiggins	DIVS	ON	OFF	DATE
			0700	1130	
			1130	1230	
			1300	1700	
11) REMARKS					
T= Travel					
Fire Name: Roadrunner Fire					
District 1 (Use District you are assigned to that day)					
12) OFFICER-IN-CHARGE (Signature) Bridgit Gallagher					13) TITLE (Officer-in-Charge) FSCC(T)
14) NAME (Person Posting to Emergency Time Report)					15) DATE

EMERGENCY EQUIPMENT SHIFT TICKET			
NOTE: The responsible Government Officer will update this form each day or shift and make initial and final equipment inspections.			
1. AGREEMENT NUMBER		2. CONTRACTOR (name)	
3. INCIDENT OR PROJECT NAME 2023 R-3 IA Support		4. INCIDENT NUMBER NC-NCS-230037	
6. EQUIPMENT MAKE Ford		7. EQUIPMENT MODEL F-350	
9. SERIAL NUMBER 748939350		10. LICENSE NUMBER PK-1234	
12. DATE MO/DAY/YR 11/6/23		13. EQUIPMENT USE HOURS/DAYS/MILES(circle one)	
START	STOP	WORK	SPECIAL
0800	1200	4	T
2000	2030	.5	
14. REMARKS (released, down time and cause, problems, etc.) T=Travel to Incident Rate: \$67.00 Fuel Cost \$95.00 Roadrunner Fire District 1 (Use District you are assigned to that day)			
15. EQUIPMENT STATUS <input type="checkbox"/> a. Inspected and under agreement <input type="checkbox"/> b. Released by Government <input type="checkbox"/> c. Withdrawn by Contractor			
16. INVOICE POSTED BY (Recorder's initials)			
17. CONTRACTOR'S OR AUTHORIZED AGENT'S SIGNATURE <i>Chester Von Wiggins</i>		18. GOVERNMENT OFFICER'S SIGNATURE Bridgit Gallagher	
19. DATE SIGNED 11/6/23		OPTIONAL FORM 207 (Rev. 7-20) (USDA/USDI)	

Poplar Drive Fire Phone Roster			
NAME	POSITION	PHONE NUMBERS	ALTERNATE PHONE
COMMAND & GENERAL STAFF			
Kevin Harvell	IC	919-548-4190	
Robbie Perry	SOFC	910-995-2572	
Greg Riggs	SOFC	252-229-0162	
Chad Brandon	SOFC(t)	252-567-0823	
Carrie McCullen	PIOC	910-874-2629	
Phillip Jackson	PIOT	919-641-4973	
Jason Guidry	LOFR	828-273-0982	
James Kimes	LOFR	919-218-7736	
AGENCY REPS			
Jimmy Brissie	Henderson EM	828-674-4464	
Davie Summey	OSFM	919-218-1387	
Terry Young	OSFM	919-612-5800	
Robert Griffin	Edneyville Fire & Rescue	828-551-3900	
Lowell Griffin	Henderson Sheriff	828-697-4596	
Michael Cheek	NCFS	828-231-2691	
OPERATIONS			
David LaFon	OSC	252-312-4367	
Dwayne Vigil(t)	OSC	828-593-9282	
David Poole	DIVS	336-250-0027	
Brain Rogers	DIVS	828-894-8020	
Lee Wicker	DIVS		
Hagen Blake	DIVS	910-641-1441	
Bill Walker	DIVS (Night)	910-641-1439	
Rob Davis	DIVS (Night)	252-548-4780	
Little	DIVS (Night)		
Jonathan Ward	DIVS (Structure / Day)	828-674-1271	
Kevin Waldrup	OSC (Structure / Day)	828-674-1449	
Taylor Marsh	OSC (Structure / Night)	919-621-7207	
Jamie Fore	DIVS (Structure)	919-777-4209	
Deral Raynor	DIVS (Structure)	919-538-5696	
Jonathan Ross	THSP	704-695-4294	
FINANCE			
Ron Myers	FSC	919-902-1842	
Bridgit Gallagher(t)	FSCC(t)/COST	828-243-5950	
Renee Strickland	TIME	919-868-6327	
Jeana McDuffie	EQTR/PTRC	910-770-2453	
Kristi Wilson	PTRC(t)	910-206-1047	
PLANNING			
Dennis Register	PSC	252-229-0165	
Victoria Cortes	PSC (Structure)	828-458-9209	
Austin Harriett	RESL	252-229-0810	
Daivd Morgan	RESL (Structure)	828-636-2733	
Richard Cockerham	SITL	704-616-0747	
Robin Roberson	RADO	919-636-0737	
Michael Petruncio	FOBS	252-312-4371	
John Willis	SCKN(t)	704-910-9063	
LOGISTICS			
Jeremiah Greene	LSC	919-616-0562	
Jamie Logan	LSCC	828-399-1141	
Tim McFalls	LSC (Structure)	828-636-2725	
Patrick Raynor	ORDM	336-239-2377	
Derek Arney	FACL	828-413-0457	
Frankie Britt	GSUL	910-234-1311	
Jimmy Meadows	COML	252-229-7307	
Bruce Scott	COMT	828-545-9209	
Robin Weber	RADO	252-717-8286	
Wayne Pugh	FACL	252-945-3199	
Jason Wade	ORDM(t)	910-309-8654	
Clyde Leggins	FDUL	828-334-2340	
Stewart Niemyer	MEDL	252-526-1476	

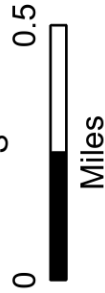
IAP Map

Poplar Drive
NC-NCS-230039
11/8/2023 Day Shift

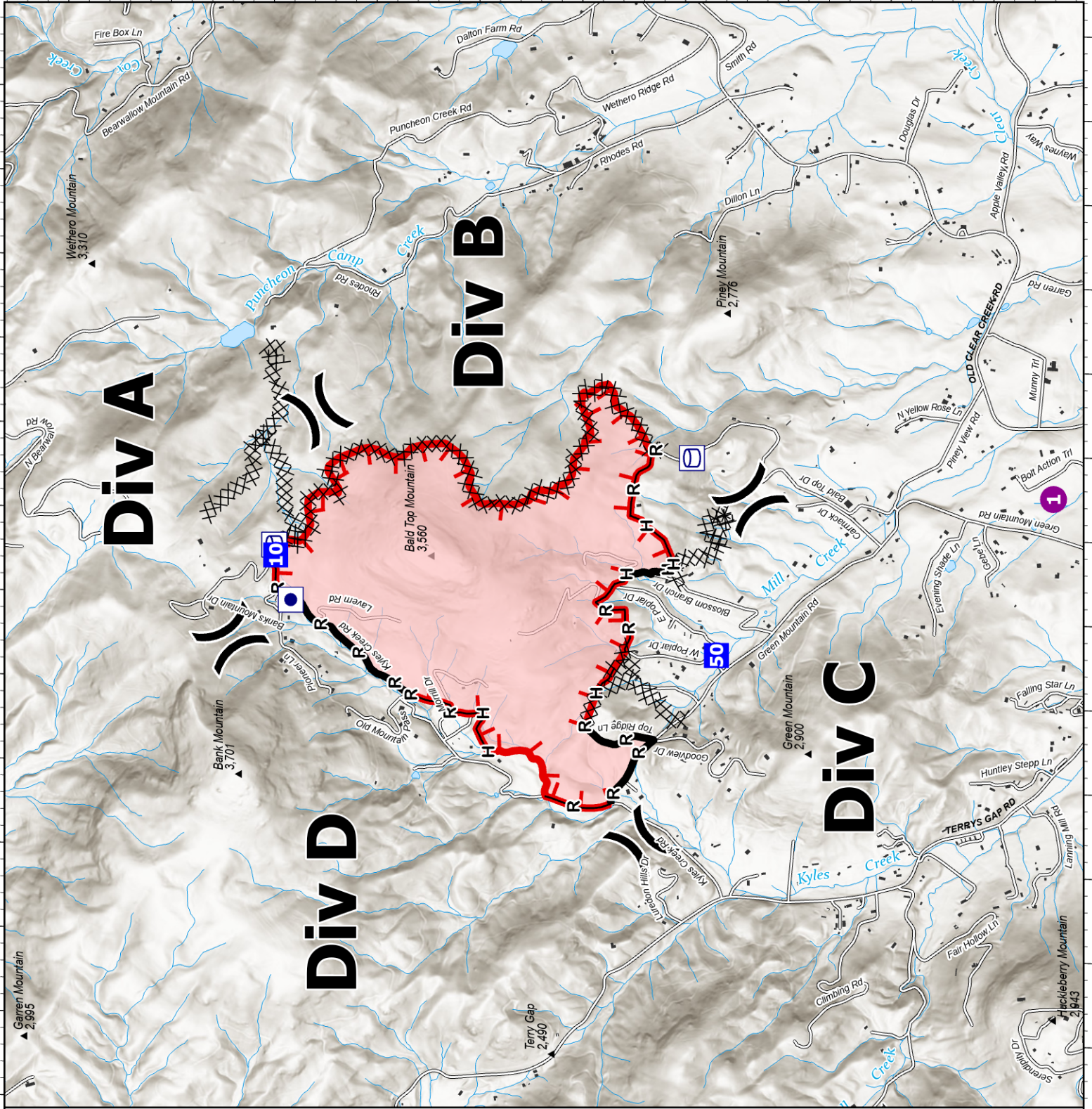
431 acres at 11/6/2023 @ 1100 hrs



- Wildfire Daily Fire Perimeter
- Contained
- Uncontained
- Gap: Summit
- Helispot
- Division Break
- Drop Point
- Other Property
- Water Tank
- Completed Dozer Line
- Completed Hand Line
- Completed Road as Line
- Road



NCFS IMT
11/7/2023 2033
Acres from IR and GPS
North American 1983 Datum



MEDICAL PLAN (ICS 206 WF)

Controlled Unclassified Information//Basic

Medical Incident Report

FOR A NON-EMERGENCY INCIDENT, WORK THROUGH CHAIN OF COMMAND TO REPORT AND TRANSPORT INJURED PERSONNEL AS NECESSARY.

FOR A MEDICAL EMERGENCY: IDENTIFY ON-SCENE INCIDENT COMMANDER BY NAME AND POSITION AND ANNOUNCE "MEDICAL EMERGENCY" TO INITIATE RESPONSE FROM IMT COMMUNICATIONS/DISPATCH.

Use the following items to communicate situation to communications/dispatch.

1. CONTACT COMMUNICATIONS / DISPATCH (Verify correct frequency prior to starting report)

Ex: "Communications, Div. Alpha. Stand-by for Emergency Traffic."

2. INCIDENT STATUS: Provide incident summary (including number of patients) and command structure.

Ex: "Communications, I have a Red priority patient, unconscious, struck by a falling tree. Requesting air ambulance to Forest Road 1 at (Lat./Long.) This will be the Trout Meadow Medical, IC is TFLD Jones. EMT Smith is providing medical care."

Severity of Emergency / Transport Priority	<input type="checkbox"/> RED / PRIORITY 1 Life or limb threatening injury or illness. Evacuation need is IMMEDIATE <i>Ex: Unconscious, difficulty breathing, bleeding severely, 2° – 3° burns more than 4 palm sizes, heat stroke, disoriented.</i> <input type="checkbox"/> YELLOW / PRIORITY 2 Serious Injury or illness. Evacuation may be DELAYED if necessary. <i>Ex: Significant trauma, unable to walk, 2° – 3° burns not more than 1-3 palm sizes.</i> <input type="checkbox"/> GREEN / PRIORITY 3 Minor Injury or illness. Non-Emergency transport <i>Ex: Sprains, strains, minor heat-related illness.</i>	
Nature of Injury or Illness & Mechanism of Injury		<i>Brief Summary of Injury or Illness (Ex: Unconscious, Struck by Falling Tree)</i>
Evacuation Request		<i>Air Ambulance / Short Haul/Hoist Ground Ambulance / Other</i>
Patient Location		<i>Descriptive Location & Lat. / Long. (WGS84)</i>
Incident Name		<i>Geographic Name + Medical (Ex: Trout Meadow Medical)</i>
On-Scene Incident Commander		<i>Name of on-scene IC of Incident within an Incident (Ex: TFLD Jones)</i>
Patient Care		<i>Name of Care Provider (Ex: EMT Smith)</i>

3. INITIAL PATIENT ASSESSMENT: Complete this section for each patient as applicable (start with the most severe patient)

Patient Assessment: See IRPG PAGE 106

Treatment:

4. EVACUATION PLAN:

Evacuation Location (if different): (Descriptive Location (drop point, intersection, etc.) or Lat. / Long.) Patient's ETA to Evacuation Location:

Helispot / Extraction Site Size and Hazards:

5. ADDITIONAL RESOURCES / EQUIPMENT NEEDS:

Example: Paramedic/EMT, crews, immobilization devices, AED, oxygen, trauma bag, IV/fluid(s), splints, rope rescue, wheeled litter, HAZMAT, extrication

6. COMMUNICATIONS: Identify State Air/Ground EMS Frequencies and Hospital Contacts as applicable

Function	Channel Name/Number	Receive (RX)	Tone/NAC *	Transmit (TX)	Tone/NAC *
COMMAND					
AIR-TO-GRND					
TACTICAL					

7. CONTINGENCY: Considerations: If primary options fail, what actions can be implemented in conjunction with primary evacuation method? Be thinking ahead..

8. ADDITIONAL INFORMATION: Updates/Changes, etc.

REMEMBER: Confirm ETAs of resources ordered. Act according to your level of training. Be Alert. Keep Calm. Think Clearly. Act Decisively.

