

81°26'W

81°25.5'W

81°25'W



36°6'N

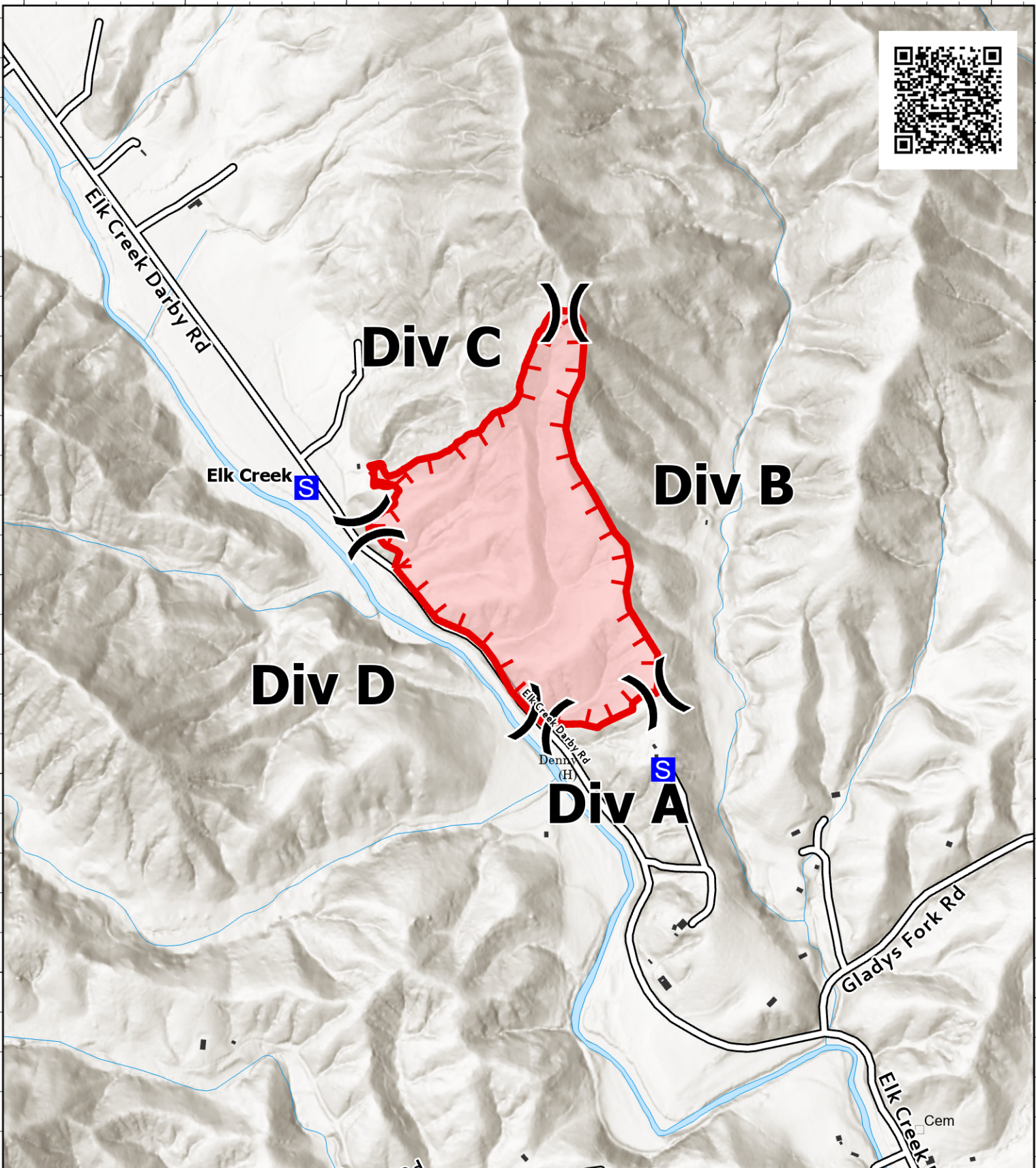
36°6'N

36°5.5'N

36°5.5'N

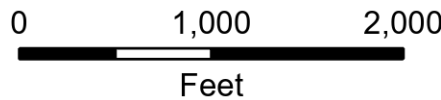
36°5'N

36°5'N



IAP Map

Branch Fire
NC-NCS-230037
11/11/2023 Day Shift
80 acres at 11/12/2023 1446



- Wildfire Daily Fire Perimeter
- Uncontained
- Division Break
- Staging Area
- Road
- Artificial Path
- Stream/River
- Structure



NCFS IMT
11/13/2023 1816
Acres from GIS and GPS
North American 1983

81°26'W

81°25.5'W

81°25'W