

81°26'W

81°25.5'W

81°25'W

Ops Map

Branch Fire
NC-NCS-230037
11/13/2023 Day Shift
80 acres at 11/12/2023 1446

0 0.1 0.2 Miles



36°6.5'N

36°6'N

36°5.5'N

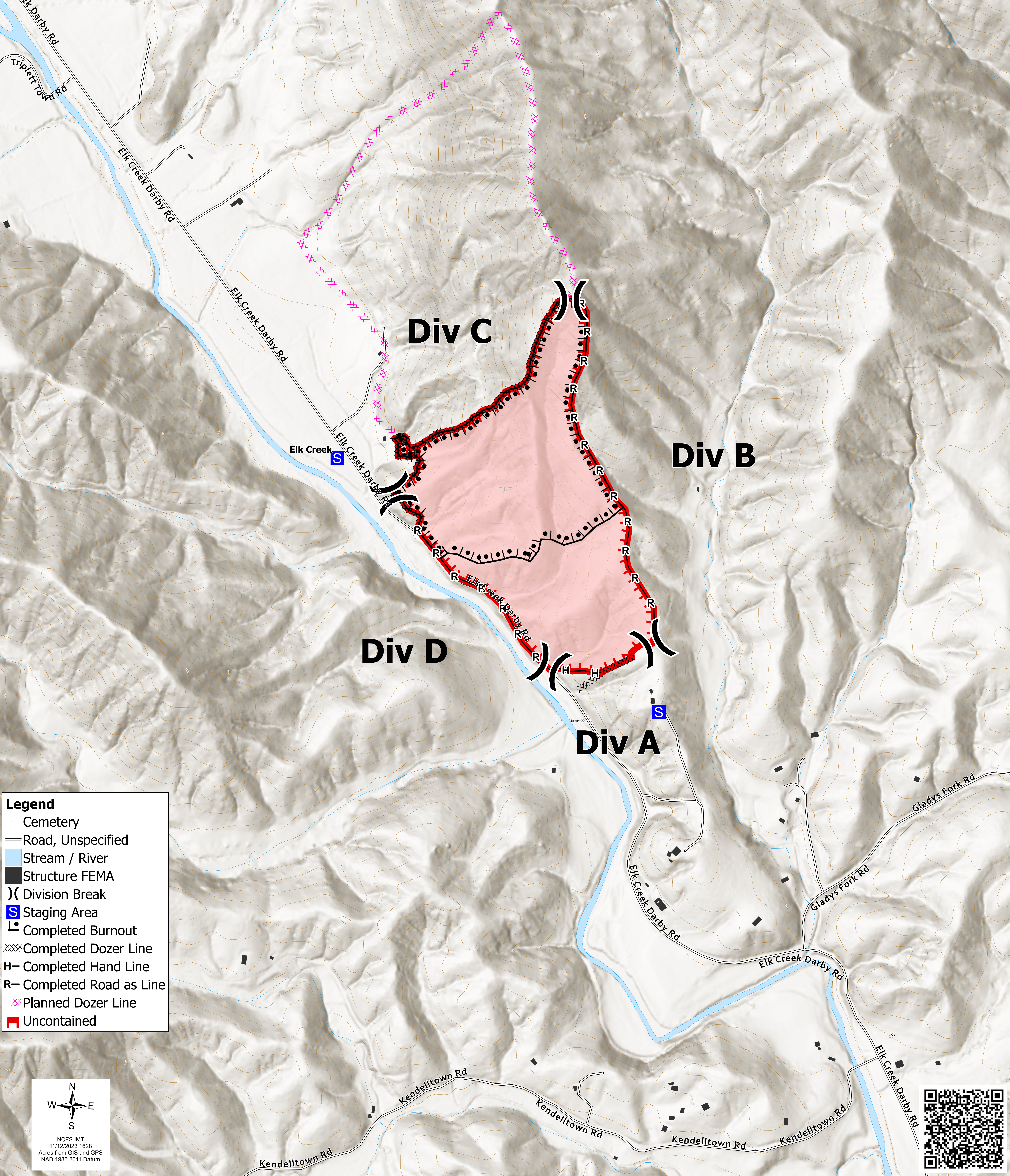
36°5'N

36°6.5'N

36°6'N

36°5.5'N

36°5'N



Legend

- Cemetery
- Road, Unspecified
- Stream / River
- Structure FEMA
- Division Break
- Staging Area
- Completed Burnout
- Completed Dozer Line
- Completed Hand Line
- Completed Road as Line
- Planned Dozer Line
- Uncontained

NCFS IMT
11/12/2023 1628
Acres from GIS and GPS
NAD 1983 2011 Datum



81°26'W

81°25.5'W

81°25'W