

R3 FALL IA SUPPORT

NC-NCS-230037
Fiori Time Code: G/T/F 1434

FY24 NCFS INCIDENT SUPPORT

NC-NCS-230041
Financial Code: PN QRN9



November 17, 2023
Friday

Operational Period Day 0700-1900 hrs.

R3 Severity
IAP



| | | | |
|--|--|---|------------------|
| INCIDENT OBJECTIVES | 1. INCIDENT NAME | 2. DATE PREPARED | 3. TIME PREPARED |
| | 2023 R-3 Fall IA Support and FY24 NCFS Incident Support | 11/16/23 | 1700 |
| 4. OPERATIONAL PERIOD (DATE/TIME) November 17, 2023 Day 0700-1900 | | | |
| 5. GENERAL CONTROL OBJECTIVES FOR THE INCIDENT (INCLUDE ALTERNATIVES) | | | |
| <ol style="list-style-type: none"> 1. Provide for safety of our firefighters, assigned resources and public through adequate work rest ratios, risk assessments, hazard mitigation and information dissemination. 2. Assist North Carolina Forest Service Mountain Region in planning, resource tracking, and financial tracking of the 2023 R3 Fall IA Support resources. 3. Manage fires in cost effective manner. Maintain accurate cost estimates of the incident and provide daily updates through morning reports and afternoon situation reports. 4. All incident personnel will be treated with dignity and respect. We exhibit care, concern, and consideration for others. This incident has zero tolerance for harassment, alcohol or drug use. | | | |
| 6. WEATHER FORECAST FOR OPERATIONAL PERIOD Districts should provide updated weather forecast to resources | | | |
| 7. GENERAL SAFETY MESSAGE <u>HYDRATION/HEAT STRESS</u>- drink often and drink a lot, before you get thirsty. 4:1 water to sports drinks. | | | |
| 8. ATTACHMENTS (✓ IF ATTACHED) | | | |
| <input checked="" type="checkbox"/> ORGANIZATION LIST (ICS 203) <input checked="" type="checkbox"/> MEDICAL PLAN (ICS 206) <input checked="" type="checkbox"/> SAFETY MESSAGE <input checked="" type="checkbox"/> ASSIGNMENT LIST (ICS 204) <input type="checkbox"/> INCIDENT MAP <input checked="" type="checkbox"/> PHONE LIST <input type="checkbox"/> COMMUNICATIONS PLAN (ICS 205) <input type="checkbox"/> TRAVEL MAP <input type="checkbox"/> | | | |
| 9. PREPARED BY (RESOURCE UNIT LEADER) Austin Harriett | | 10. APPROVED BY (INCIDENT COMMANDER) Kevin Harvell | |

Fuels and Fire Behavior Advisory

Southern Appalachian Mountains and Piedmont

Effective November 13, 2023

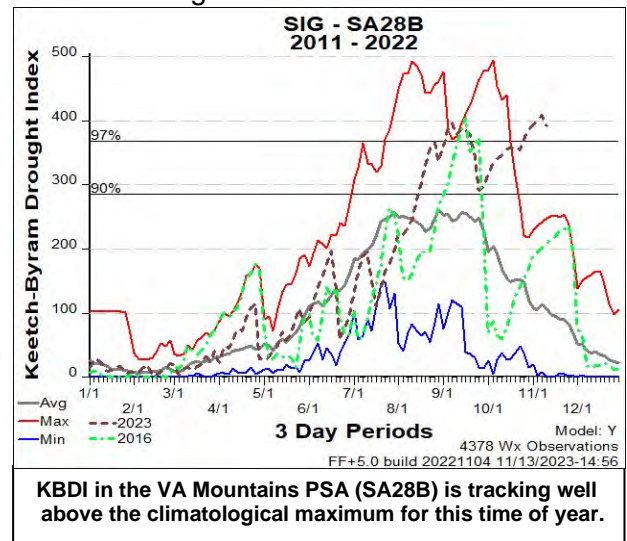
Subject: Increased fire danger in the hardwood-dominant Southern Appalachians due to ongoing drought

Discussion: Severe to exceptional drought has expanded across the Southern Appalachians and portions of the Piedmont in recent weeks, while seasonal leaf off continues to progress down from the higher elevations. The availability of fresh leaf litter and extremely dry duff layers on the surface are both contributing to difficulties controlling and containing ongoing wildfires. Recent light rain has only temporarily reduced fire danger. Long-term rainfall deficits combined with another period of abnormally dry air and poor overnight recoveries will result in critically low dead fuel moisture and a sharp increase in risk. Conditions within and adjacent to the advisory may degrade further if soaking rainfall does not return in the next one to two weeks, but confidence in weather conditions is lower than normal beyond the 5-day period.

Difference from normal conditions: Fire danger indices across the advisory area have increased to levels that are locally on par with conditions in the fall of 2016. Owing to 30-, 60- and 90-day rainfall deficits well below 25% of normal, 100- and 1000-hour fuels are critically dry, resulting in extensive mop-up operations. Additionally, multiple fires have remained active through the overnight hours as a result of the drought-impacted duff layer burning readily and holding heat. The energy release component (ERC) in several Predictive Service Areas (PSAs) recently surpassed historic levels observed in the fall of 2016, while KBDIs are tracking near the climatological maximum in portions of the area (as shown below). Fuels that normally burn during the spring fire season, such as Mountain Laurel and Rhododendron, are actively burning and contributing to fire spread. Active torching in young pine has also been observed under moderate burning conditions.

Concerns to Firefighters and the Public: Any fire in this area may be resistant to control efforts. Expect:

- a high probability for ignitions and spotting in *extremely dry* down and dead fuels;
 - elevated or higher fire line intensity during both initial attack and extended attack;
 - holding issues on handlines and the need for extended mop-up - freshly fallen leaves may need to be blown off containment lines regularly where leaf off has not reached completion;
 - higher than normal fire intensities in areas of complex terrain, which may preclude direct attack of fires;
 - the risk for fires to encroach on the wildland-urban interface, which has grown substantially since 2016;
 - extreme fire behavior and rates of spread if terrain-enhanced wind events, extended periods of low RH or other critical fire weather patterns materialize.
- See the Southern Area Fall [Risk Assessment](#) for an overview of critical fire weather patterns in the region, which may include dry cold fronts, distant tropical cyclones and [mountain waves](#).



Mitigation Measures:

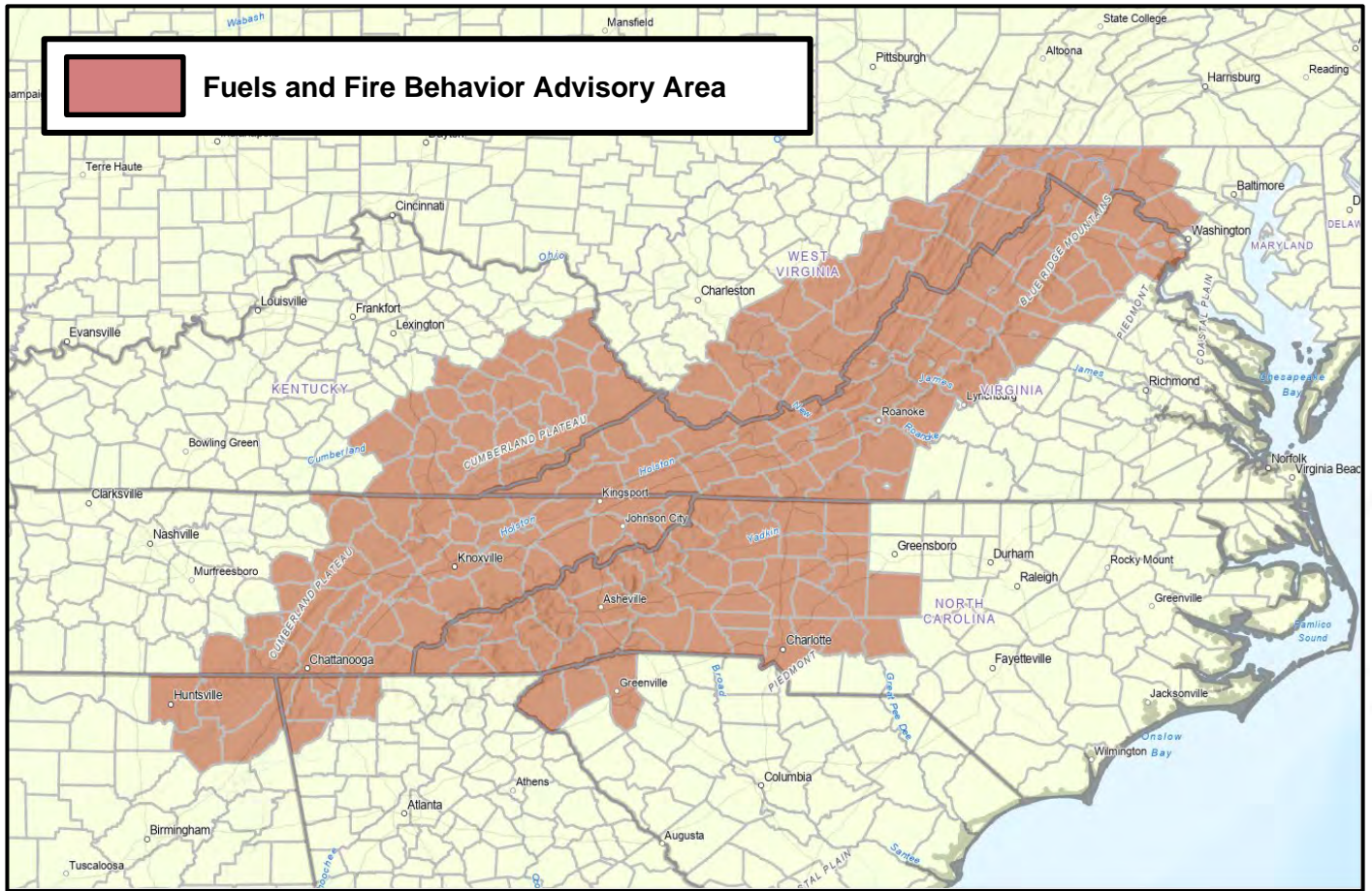
- Do not expect any fire to be routine.
- Fire managers should be prepared to support periods of increasing fire occurrence, as well as complex, potentially long-duration incidents.
- Utilize indirect tactics and plan for extended mop-up, with periodic patrolling of control lines.
- Utilize aerial supervision to help direct crews and keep them informed on fire behavior.
- Ensure adequate daily briefings for initial attack resources, especially if critical fire weather is forecast.
- Make sure that LCES is in place before engaging on any fire. Remember to STOP, THINK and TALK before you ACT.

Issued By: Southern and Eastern Area Predictive Services in coordination with state and federal partners.

Fuels and Fire Behavior Advisory

Southern Appalachian Mountains and Piedmont

Effective November 13, 2023



Fresh leaf litter is contributing to fire spread under Rhododendron on the Collett Ridge Fire in North Carolina (left, National Forests of NC). Fires have been actively burning throughout the overnight hours in portions of the Appalachians (right, VA Department of Forestry).

MOUNTAIN WAVE WIND EVENTS

Mountain waves occur amid stable air masses with strong temperature inversions near mountainous terrain and are most common through late fall and winter in the Appalachians.

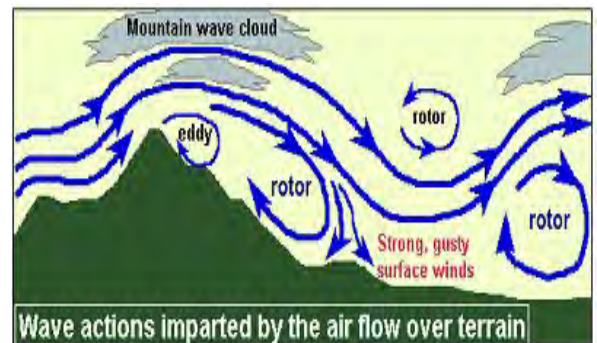
They may occur near any elevated terrain in the geographic area, as long as the **wind direction**

aloft lies within 30 degrees of being perpendicular to a ridge line. The southern Appalachians traditionally experience them in pre-frontal environments, often at night, as warm and moist Atlantic or Gulf air surges northwards or northwestwards ahead of an approaching low pressure system and its cold front. The most common weather pattern associated with them features a strong low pressure system moving through the Ohio Valley or Great Lakes.

Indicators and Watchouts:

- Roll clouds aligned with ridgeline topography
- National Weather Service high wind warnings associated with pre-frontal (southeast) or post-frontal (northwest) winds
- Highly localized
- Not possible to forecast due to model and data limitations
- Higher winds often accompanied by much drier air mass
- Expect erratic fire behavior and rapid fire growth

Although their footprint is often quite narrow, **extreme winds in excess of hurricane-force (80 – 100 mph) can occur on the lee or downwind side of ridges**, with a rapid and unexpected shift in wind direction also a distinct possibility. Humid and cool conditions may be suddenly interrupted as drier air aloft accelerates towards the ground, resulting in **extreme winds and a sudden decrease in relative humidity.** Areas downwind of steep gradients in terrain are most susceptible. The east side of the Appalachians can see mountain wave events that lead to enhanced winds and subsidence in post-frontal environments as well. In addition to enhancing fire weather and potentially leading to extreme fire behavior, mountain waves can contribute to new ignitions from downed power lines and restrict air ops due to potential IFR conditions and severe to extreme turbulence.



CHIMNEY TOPS 2 FIRE

- Date: November 28, 2016
- Location: GSMNP, Sevier County, TN
- Persistent severe drought conditions
- 87 mph wind gusts due to Mountain Wave Wind Event recorded
- Fire growth from 35 acres to 17,000 acres in 24 hours
- 14 deaths
- 2,501 structures impacted

HEALTH AND SAFETY MESSAGE

SAFETY starts with YOU!

INCIDENT NAME: R3 FALL IA SUPPORT

OPERATIONAL PERIOD: Nov. 17, 2023

Fire Order #1. Keep Informed on Fire Weather Conditions and Forecasts

KNOWN HAZARDS

ACCOUNTABILITY

During this fire season we have an influx of out of state and in state cooperating partners. I urge our incident commanders and supporting fire fighters to take the time to ensure you have accountability for all responding resources. Know who is coming to your initial attack fires and ensure those resources have made it off the fire scene and safely back to accommodations before going off shift.

We have the responsibility to be a good host and ensure the resources have a positive experience here and are well taken care of while assisting us in our time of need.

STEEP AND ROCKY TERRIAN

Be deliberate of foot placement when walking on steep terrain. Rocks will become loose when walking on them. They may cause fire fighters to turn ankles or fall. Additionally, loose rocks will roll downhill making for hazardous conditions for fire fighters lower on the fire line. Call out falling rocks so that others below can avoid them.

SNAGS AROUND THE FIRE AREA

Avoid working under snags and trees with dead branches hanging from them. Especially during windy conditions. Use chainsaws to remove trees from the fire area is safely able to do so. Fallers should be qualified or under the direct supervision of a qualified faller.

HOLIDAY TRAFFIC AND INCREASED DRIVING HAZARDS

Increased traveling from civilian traffic is anticipated through out this weekend and next week due to the Thanksgiving Holiday. We urge our resources to drive courteously and defensively. We represent the NC Forest Service and the National Fire community. Leave with plenty of time to arrive at your location, anticipate heavier than usual traffic delays. Take extra precaution when driving at night, ensure safe following distances while driving, remember it takes at least 2-3 three car lengths to stop a vehicle and a avoid a rear end collision. Be professional always and be mindful that others on the road may be experiencing stress and fatigue. Please use extreme caution with using emergency traffic and abide by all laws as well as NCFs policy and procedure.

NIGHT OPERATIONS

Night operations present a unique set of safety concerns for wildland fire suppression. Take the time during the day's shift to ensure you are prepared for any time operations you may be a part of. Steps can include; ensure that you have adequate lighting for vision during the night, make sure to have reflective material on your line gear, PPE and your outer garments. Carry extra batteries for headlamps and check them for operability prior to needing them. As always, heavy equipment should be given a large area to work in free of fire fighters and apparatus. As a general rule of thumb, the area surrounding any equipment should be given two and a half times the tree height to work in and even more after night falls.

COMPLACENCY

Keep your mind sharp and on task. Complacent attitudes invite accidents and injuries. After several days of little to no fire activity and completing the same task, people may become complacent and take their minds off the seriousness of the job. Maintain your situational awareness and continue to practice your risk management.

ACCIDENTS & INJURIES

Discuss during tailgate briefings what the plan is if there is an injury in the field. Know what your role will be in the response to the emergency. In the event of an emergency or an injury on the fire, call 911 and report the location and nature of the emergency. Provide first aid to the injured party first and foremost. Secure the scene so that other fire fighters or responders are not endangered and follow the emergency medical procedure for notifications.

Safety Officers: Greg Riggs SOFC/Chad Brandon SOFC(t)/CR Davis SOFC(t)

Western and Northwestern Deer Zone Season Dates for Gun Hunting in NC



| NORTHWESTERN ANTLERED DEER SEASON | |
|-----------------------------------|---|
| Archery | Sept. 9 – Nov. 3, 2023 |
| Blackpowder | Nov. 4 – Nov. 17, 2023 |
| Gun | Nov. 18, 2023 – Jan. 1, 2024 |
| WESTERN ANTLERED DEER SEASON | |
| Archery | Sept. 9 – Oct. 1, 2023, Oct. 15 – Nov. 19, 2023, and Dec. 10, 2023 – Jan. 1, 2024 (antlered only) |
| Blackpowder | Oct. 2 – Oct. 14, 2023 |
| Gun | Nov. 20 – Dec. 9, 2023 |

- Check in and out with someone, wear bright colored clothing, make noise, work in pairs.
- Talk with landowners to see if hunters will be in the area.
- If possible, avoid popular times such as early in the morning or late in the afternoon.
- Park your vehicle where it is easily seen.
- Use a headlamp or other light source during low light conditions.
- Rifles are allowed during North Carolina gun seasons.
- Confirm if you are working in a high use area such as a public game land.



Steven W. Troxler
Commissioner

**North Carolina Department of Agriculture
and Consumer Services**
N.C. Forest Service



Gregory M. Hicks
Assistant Commissioner

R3 Fall IA Support Emergency Medical Procedure

- Begin patient care and establish an IWI IC
- Call by phone 911 or central communication by county radio if on scene with local NCFS county personnel.
- After arranging patient care and transport begin the 8-line process.
- Call in the 8-line medical documentation to the district operations of the district that you are working in via phone or radio.
- District operations will make notification to R3 operations and Incident Safety via e-mail. Make additional notification via phone to Incident Safety via phone if code red or black.
- Incident Safety will make necessary notification to IMT members and document.

D1 D1opsrm@ncagr.gov 828 667 5211

D2 D2opsrm@ncagr.gov 828 757 5611

D9 D9opsrm@ncagr.gov 828 586 4007

D10 D10opsrm@ncagr.gov 336 956 3454

D12 D12opsrm@ncagr.gov 704 827 7576

R3 R3opsrm@ncagr.gov 828 665 8688

Rob Davis SOFC (t) Robb.Davis@ncagr.gov 252 548 4730

Chad Brandon SOFC (t) Chad.Brandon@ncagr.gov 252 904 5614

Greg Riggs SOFC Greg.Riggs@ncagr.gov 252 229 0162

| DIVISION ASSIGNMENT LIST | | | 1. BRANCH | | 2. Division/Group District 1 | | |
|---|-----------------|--|---|----------------------|--|-------------------------|---------------------|
| 3. Incident Name 2023 R3 Fall IA Support and FY24 NCFS Incident Support | | | 4. Operational Period Date: 11/17/23 Time: 0700-1900 | | | | |
| 5. Operations Personnel | | | | | | | |
| Operations Chief | | District Forester | | | Trent Duncan | | |
| Branch Director | | | | | | | |
| 6. Resources Assigned This Period | | | | | | | |
| Strike Team/Task Force/ Resource Designator | Leader | Last Shift | Resource # | Number Persons | Phone # | Reporting Location | |
| ICT4(t) 11-20 | G. Johnson | 11/17 | O-19 | 1 | 336-214-1908 | Buncombe County Office | |
| ICT4 3-61 | M. Frye | 11/17 | O-21 | 1 | 910-638-5364 | Henderson County Office | |
| ICT5 5-21 | P. Pennington | 11/17 | O-22 | 1 | 252-567-0825 | Henderson County Office | |
| DIVS | Jeb Schumache | 11/26 | O-28 | 1 | 541-580-0489 | Henderson County Office | |
| HEQB 7-3 | Mike Blake | 11/18 | O-78 | 1 | 252-260-1000 | McDowell County HQ | |
| TFLD | Larry Kazakoff | 11/25 | O-23 | 1 | 541-821-6627 | Transylvania County HQ | |
| HEQB 8-61 | Mike Davis | 11/21 | O-79 | 1 | 910-271-1762 | Transylvania County HQ | |
| ENG6 310 Dust Control | Cameron Mullins | 11/27 | E-8 | 3 | 602-505-3425 | Transylvania County HQ | |
| ENG6 Paula Holter | Don Holter | 11/27 | E-19 | 2 | 530-333-3854 | Transylvania County HQ | |
| DIVS | Benjamin Duda | 11/26 | O-27 | 1 | 541-480-6139 | D-1 HQ | |
| TFLD | Aaron Merritt | 11/28 | O-10 | 1 | 425-238-4474 | D-1 HQ | |
| ICT5 4-71 | K. Toomer | 11/17 | O-20 | 1 | 910-507-0970 | Kerr Rd. 4 | |
| TFLD | Bill Huserik | 11/26 | O-30 | 1 | 503-781-7830 | Kerr Rd. 4 | |
| ENG6 Lone Peak | Chris Willden | 11/27 | E-12 | 4 | 801-915-4118 | Kerr Rd. 4 | |
| ENG6 Wildland Services | Dale Goodgun | 11/27 | E-16 | 3 | 406-479-4813 | Kerr Rd. 4 | |
| ENG6 ID-TFD | Blake Erickson | 11/28 | E-14 | 5 | 208-260-8833 | Kerr Rd. 4 | |
| | | | | | | | |
| Ops Officer | Paul Mowrey | 11/20 | O-67 | 1 | 252-286-0862 | D-1 HQ | |
| 7. Control Operations Assist with Initial Attack of new starts and mop up existing fires within District 1. | | | | | | | |
| 8. Special Instructions O-78 Blake paired with 1x2 O-79 Davis paired with 1x3 | | | | | | | |
| 9. Division/Group Communication Summary | | | | | | | |
| Function | Frequency | System | Channel | Function | Frequency | System | Channel |
| Command | | NCFS | | Logistics | | NCFS | |
| Tactical Div/Group | | NCFS | | Air to Ground | | NCFS | |
| Prepared By (Resource Unit Leader) Austin Harriett | | Approved By (Planning Sect. Ch.) Dennis Register | | | Date 11/16/23 | | Time 1900 |

| | | | | | | | |
|---|----------------------------|--|---|----------------------|--|---------------------|---------|
| DIVISION ASSIGNMENT LIST | | | 1. BRANCH | | 2. Division/Group District 2 | | |
| 3. Incident Name 2023 R3 Fall IA Support and FY24 NCFS Incident Support | | | 4. Operational Period Date: 11/17/23 Time: 0700-1900 | | | | |
| 5. Operations Personnel | | | | | | | |
| ICT3 | John Cook | | District Forester | | Duane Truslow | | |
| Branch Director | | | LSC3 | | Travis Shidal | | |
| 6. Resources Assigned This Period | | | | | | | |
| Strike Team/Task Force/ Resource Designator | Leader | Last Shift | Resource # | Number Persons | Phone # | Reporting Location | |
| ICT3 | Walter Escobar | 11/25 | O-17 | 1 | 509-398-1222 | D2 HQ | |
| ICT4 5-80 | Brad Stevens | 11/28 | O-100 | 1 | 919-222-7357 | D2 HQ | |
| DIVS w/ICT4 8-41 | Raymond Rex" Strickland | 11/17 | O-12 | 1 | 910-770-2971 | D2 HQ | |
| DIVS / ICT4(t) R1-4 | Jonathan Ambrose | 12/1 | O-98 | 1 | 252-560-6478 | D2 HQ | |
| DIVS 11-70 | George Brown | 11/20 | O-102 | 1 | 336-583-6590 | D2 HQ | |
| DIVS | Ken Foss | 11/28 | O-11 | 1 | 253-318-2678 | D2 HQ | |
| TFLD | Jay Strider | 11/28 | O-99 | 1 | 910-434-3711 | D2 HQ | |
| SMOD Highlands WA | Hunter Forthun | 11/25 | O-2 | 10 | 509-419-9530 | D2 HQ | |
| HCM NCWRC Asheville | Brandon Bridges | 11/21 | C-4 | 7 | 828-764-3816 | D2 HQ | |
| ICT4 6-40 | Jason O'Neal | 11/28 | O-104 | 1 | 910-309-8954 | D2 Avery County HQ | |
| DZOP 6-25 Operating 2x3 | Jeremy Peterson | 11/27 | O-107 | 1 | 910-987-9826 | Wilkes HQ | |
| DIVS | Timothy Love | 11/25 | O-14 | 1 | 509-563-9367 | Branch Fire | |
| DIVS(t) | Brett Walker | 11/25 | O-26 | 1 | 509-680-4029 | Branch Fire | |
| TFLD | Joe Thorpe | 11/25 | O-8 | 1 | 509-899-1847 | Branch Fire | |
| TFLD(t) | Austin Russell | 11/25 | O-25 | 1 | 360-878-4824 | Branch Fire | |
| ENG6 Crooks FD – Scat 36 | Anthony Beam | 11/26 | E-5 | 3 | 970-580-2955 | Branch Fire | |
| ENG 6 National Wildland Fire | Austin Martin | 11/26 | E-6 | 3 | 505-360-4517 | Branch Fire | |
| SMOD SE Washington | Jeffrey Delarosa | 11/25 | O-1 | 11 | 509-899-0837 | Branch Fire | |
| TFLD | Connor Lane | 11/25 | O-21 | 1 | 541-842-0203 | Elk Creek Fire | |
| ENG6 Fire Cat | Bob Harrow | 11/26 | E-20 | 3 | 308-872-2096 | Elk Creek Fire | |
| DIVS | Robert Hinds | 11/25 | O-12 | 1 | 509-675-1346 | Tripplett Fire | |
| TFLD | Shannon Clark | 11/25 | O-5 | 1 | 360-770-4977 | Tripplett Fire | |
| ENG6 Trumen Bob E464 | Kolten Bob | 11/26 | E-7 | 3 | 575-937-8686 | Tripplett Fire | |
| ENG6 Vakkyrie | Charles Reese | 11/26 | E-9 | 2 | 520-603-1239 | Tripplett Fire | |
| | | | | | | | |
| Ops Officer R1-31 | Billy Barnette | 11/17 | O-15 | 1 | 252-560-5467 | D2 HQ OPS Room | |
| 7. Control Operations Assist with Initial Attack of new starts and mop up existing fires within District 2. | | | | | | | |
| 8. Special Instructions | | | | | | | |
| Function | Frequency | System | Channel | Function | Frequency | System | Channel |
| Command | | NCFS | | Logistics | | NCFS | |
| Tactical Div/Group | | NCFS | | Air to Ground | | NCFS | |
| Prepared By (Resource Unit Leader) Austin Harriett | | Approved By (Planning Sect. Ch.) Dennis Register | | | Date 11/16/23 | Time 1900 | |

| | | | | | | | |
|---|---------------------|--|---|----------------------|--|---------------------|---------|
| DIVISION ASSIGNMENT LIST | | | 1. BRANCH | | 2. Division/Group District 9 | | |
| 3. Incident Name 2023 R3 Fall IA Support and FY24 NCFS Incident Support | | | 4. Operational Period Date: 11/17/23 Time: 0700-1900 | | | | |
| 5. Operations Personnel | | | | | | | |
| Operations Chief | | District Forester | | | Ruthie Edwards | | |
| Branch Director | | | | | | | |
| Can 6. Resources Assigned This Period | | | | | | | |
| Strike Team/Task Force/ Resource Designator | Leader | Last Shift | Resource # | Number Persons | Phone # | Reporting Location | |
| DIVS | Hoerner Thomas | 11/25 | O-13 | 1 | 509-859-6779 | Cherokee County HQ | |
| TFLD | Anthony Dobson | 11/25 | O-7 | 1 | 509-310-3229 | Cherokee County HQ | |
| DZOP | Cooper Aycock | 11/21 | O-73 | 1 | 252-567-8066 | Cherokee County HQ | |
| FFT1 | Nathaniel Nucci | 11/26 | O-94 | 1 | 910-874-0707 | Cherokee County HQ | |
| ICT4 | Kyle Powell | 11/26 | O-90 | 1 | 910-840-1526 | Graham County HQ | |
| DIVS | Brent O'Nion | 11/26 | O-29 | 1 | 503-781-2391 | Graham County HQ | |
| TFLD | Jason Wickizer | 11/26 | O-22 | 1 | 712-579-8781 | Graham County HQ | |
| ICT5 | Madelyn Mahon | 11/25 | O-95 | 1 | 252-339-4303 | Haywood County HQ | |
| ICT5 | Adam Huffman | 11/27 | O-91 | 1 | 919-631-7546 | Haywood County HQ | |
| FFT1 | Justin McLemore | 11/20 | O-9 | 1 | 910-320-1947 | Haywood County HQ | |
| ENG6 National Wildland Fire | Brian Ennis | 11/26 | E-4 | 3 | 970-779-0819 | Macon County HQ | |
| ICT4 6-21 | Blake Arnold | 11/21 | O-75 | 1 | 910-705-5058 | Swain County HQ | |
| DIVS | Joshua Mohler | 11/25 | O-15 | 1 | 360-515-1523 | Swain County HQ | |
| TFLD | David Westscott | 11/25 | O-6 | 1 | 360-708-6385 | Swain County HQ | |
| ICT3 | Gene Phillips | 11/25 | O-18 | 1 | 360-319-6670 | D-9 HQ | |
| HEQB 7-24 | Jack Keller | 11/18 | O-7 | 1 | 509-310-3229 | D-9 HQ | |
| ENG6 CTS – 1526 | Christopher Connors | 11/27 | E-2 | 3 | 806-235-3151 | D-9 HQ | |
| SMOD Thunder Mountain UT | Janik Sundberg | 11/25 | O-19 | 12 | 385-277-2126 | D-9 HQ | |
| HCM NCWRC Sylva | Jonathan McCall | 11/21 | C-5 | 5 | 828-550-6820 | D-9 HQ | |
| 7. Control Operations Assist with Initial Attack of new starts and mop up existing fires within the District 9. | | | | | | | |
| 8. Special Instructions | | | | | | | |
| 9. Division/Group Communication Summary | | | | | | | |
| Function | Frequency | System | Channel | Function | Frequency | System | Channel |
| Command | | NCFS | | Logistics | | NCFS | |
| Tactical Div/Group | | NCFS | | Air to Ground | | NCFS | |
| Prepared By (Resource Unit Leader) Austin Harriett | | Approved By (Planning Sect. Ch.) Dennis Register | | | Date 11/16/23 | Time 1900 | |

| | | | | | | | | |
|---|----------------|-------------------|--|----------------------|-----------------|---|---------|---------------------|
| DIVISION ASSIGNMENT LIST | | | 1. BRANCH | | | 2. Division/Group District 10 | | |
| 3. Incident Name 2023 R3 Fall IA Support and FY24 NCFS Incident Support | | | 4. Operational Period Date: 11/17/23 Time: 0700-1900 | | | | | |
| 5. Operations Personnel | | | | | | | | |
| Operations Chief | | District Forester | | | Nancy Blackwood | | | |
| Branch Director | | | | | | | | |
| 6. Resources Assigned This Period | | | | | | | | |
| Strike Team/Task Force/ Resource Designator | Leader | Last Shift | Resource # | Number Persons | Phone # | Reporting Location | | |
| TFLD | Leo Williamson | 11/26 | O-24 | 1 | 541-207-6038 | 312 Mark Rd. Fire | | |
| ENG6 DKZ643 | Jonas Redstar | 11/27 | E-15 | 3 | 406-833-0205 | 312 Mark Rd. Fire | | |
| ENG6 DKZ642 | Joseph Wetzel | 11/27 | E-17 | 3 | 406-207-9077 | 312 Mark Rd. Fire | | |
| ENG6 DKZ644 | Eugene Weasel | 11/27 | E-18 | 3 | 406-880-3980 | 312 Mark Rd. Fire | | |
| | | | | | | | | |
| SMOD Olympia MOD | Mike Burri | 11/28 | O-3 | 10 | 509-899-5136 | J.J. Landfill Fire | | |
| | | | | | | | | |
| | | | | | | | | |
| | | | | | | | | |
| | | | | | | | | |
| | | | | | | | | |
| | | | | | | | | |
| | | | | | | | | |
| | | | | | | | | |
| | | | | | | | | |
| | | | | | | | | |
| | | | | | | | | |
| | | | | | | | | |
| | | | | | | | | |
| | | | | | | | | |
| | | | | | | | | |
| | | | | | | | | |
| | | | | | | | | |
| | | | | | | | | |
| 7. Control Operations | | | | | | | | |
| Assist with Initial Attack of new starts and mop up existing fires within District 10. | | | | | | | | |
| 8. Special Instructions | | | | | | | | |
| 9. Division/Group Communication Summary | | | | | | | | |
| Function | Frequency | System | Channel | Function | Frequency | System | Channel | |
| Command | | NCFS | | Logistics | | NCFS | | |
| Tactical Div/Group | | NCFS | | Air to Ground | | NCFS | | |
| Prepared By (Resource Unit Leader) Austin Harriett | | | Approved By (Planning Sect. Ch.) Dennis Register | | | Date 11/16/23 | | Time 1900 |

| | | | | | | | |
|--|-----------------|--|----------------|---|--------------|---------------------|---------|
| DIVISION ASSIGNMENT LIST | | 1. BRANCH | | 2. Division/Group District 12 | | | |
| 3. Incident Name 2023 R3 Fall IA Support and FY24 NCFS Incident Support | | 4. Operational Period Date: 11/17/23 Time: 0700-1900 | | | | | |
| 5. Operations Personnel | | | | | | | |
| Operations Chief | | District Forester | | | Matt Barker | | |
| Branch Director | | | | | | | |
| 6. Resources Assigned This Period | | | | | | | |
| Strike Team/Task Force/ Resource Designator | Leader | Last Shift | Resourc e # | Number Persons | Phone # | Reporting Location | |
| ICT4 8-42 | Jonathan Spivey | 11/17 | O-17 | 1 | 910-840-0421 | Rutherford Co HQ | |
| ICT4(t) 4-61 | Jeremy Holley | 12/1 | O-96 | 1 | 252-560-8299 | Rutherford Co HQ | |
| | | | | | | | |
| | | | | | | | |
| | | | | | | | |
| | | | | | | | |
| | | | | | | | |
| | | | | | | | |
| | | | | | | | |
| | | | | | | | |
| | | | | | | | |
| | | | | | | | |
| | | | | | | | |
| | | | | | | | |
| | | | | | | | |
| | | | | | | | |
| | | | | | | | |
| 7. Control Operations Assist with Initial Attack of new starts and mop up existing fires within District 12. | | | | | | | |
| 8. Special Instructions | | | | | | | |
| 9. Division/Group Communication Summary | | | | | | | |
| Function | Frequency | System | Channel | Function | Frequency | System | Channel |
| Command | | NCFS | | Logistics | | NCFS | |
| Tactical Div/Group | | NCFS | | Air to Ground | | NCFS | |
| Prepared By (Resource Unit Leader) Austin Harriett | | Approved By (Planning Sect. Ch.) Dennis Register | | Date 11/16/23 | | Time 1900 | |

Ordering, Check-in, Demob, and Finance Procedures

- **Resources that were ordered through the FY24 NCFS Incident Support:**
 - **Will check-in with the Harvell IMTC at the Justice Academy**
 - **Will demob with the Harvell IMTC at the Justice Academy**

- Districts will call Region 3 and ask for Severity Ordering to place all resource and supply orders.
 - Severity ORDM will generate Request Number and will submit through expanded/R3 to go up to CO

- Assigned resources will travel to the District that ordered them.

- Upon arrival, resources ordered through **R3 Fall IA Support** will complete the following:
 - NC-211 NCFS Check-in Sheet and email, along with Resource Orders to ncfs.imt.plans@ncagr.gov
 - District Mechanics and/or FFEs will perform an equipment inspection on all equipment on the OF-296 Inspection form and email a copy to frankie.britt@ncagr.gov
 - **Out-of-State resources will check-in at the Justice Academy.**

- All resources being released from a fire will need to be submitted to R3 Ops for reassignment/area of staging.
 - District Ops should update Severity Resources daily by emailing ncfs.imt.plans@ncagr.gov daily by 1000 hours.

- **LODGING**
 - District Office will arrange lodging as needed for resources.
 - District Office Manager will add information to lodging tracking spreadsheet daily.
 - Rooms will be paid for by Buying Team.
 - Resources will CHECK OUT from the hotel when they leave but are not responsible for invoices.

- **SUPPLIES**
 - Severity ORDM will generate S# for supplies and submit to Buying Team for fulfillment.
 - Supply orders will be filled by a local BUYM who is assigned to the Buying Team.
 - BUYM will deliver all documentation related to purchases to the Buying Team.

- Finance
 - Submit CTRs and Shift Tickets Daily
 - Prior to demob, resource will be sent a draft 286/288 for review and approval.
 - Once approved by resource, final 286/288 will be emailed for completion.
 - Finance will email resource completed packet.
 - See attached document for daily procedures.
 - Paid-out costs will be submitted daily to CO-Ops by IMT Finance

- Resources that are preparing to demob from the District or a large fire (including out-of-state resources) should notify Demob Unit Leader Lisa Hartrick and Finance 3 days prior to their scheduled demob date.
 - 1st working day is the day following travel to the incident/assigned district, regardless of distance traveled.
 - Unless an extension is granted through the proper channels, resources will have a 14-day assignment.
 - Resources will be required to RON on their last working day and travel home the next day, unless their home is within 2-hours driving time from assigned District Office.
 - The Demob Unit Leader will email the resource the ICS 221, Demobilization Check out form.
 - A District representative will sign off on Facilities, Ground Support, and Supply; indicating that they have checked out of hotels, had their equipment inspected, and returned any supplies issued by the District.
 - A District representative will indicate an ETD from the District and an ETA to their home unit.
 - **Out-of-State resources will travel to the Justice Academy to demob.**
 - The following documents will be emailed to ncfs.imt.plans@ncagr.gov
 - ICS 221, Demobilization Check out form
 - A copy of the evaluation for the resource
 - The following documents will be emailed to ncfs.imt.finance@ncagr.gov
 - All remaining CTRs and Equipment Shift Tickets
 - Completed Equipment inspection forms, OF-296
 - Finance will email the resource their final documentation package.

Finance Information for Districts and Resources

Submit CTRs and Shift Tickets **DAILY**

Paper copies can be left at the district office to be picked up by a team member or emailed to:

ncfs.int.finance@ncagr.gov

- Include the **Fire Name** and **District** you are assigned to in the remarks section of all CTRs and STs.
- Include dollar amount of fuel purchased in **Box 14 Remarks** on the shift ticket.
- Please show travel time on your documents and include **TRAVEL** in remarks. You only have travel on your first and last day.
- Legibly complete your CTRs and Equipment Shift Tickets using the examples below.
- Make sure you use your legal name (not a nickname) on ALL documentation.
- Only one day per CTR/Equipment Shift Ticket.
- **Make sure your incident supervisor signs your tickets before submitting them to finance.**

2023 R-3 Fall IA Support, NC-NCS-230037 Examples

| CREW TIME REPORT | | | | | |
|---|----------------------|--------------------------|--------------------------------|-----------------|-----------|
| (1) CREW NAME | | | (2) CREW NUMBER | | |
| NCFS | | | O-25 | | |
| (3) OFFICE RESPONSIBLE FOR FIRE | | (4) FIRE NAME | | (5) FIRE NUMBER | |
| NCFS | | 2023 R-3 FALL IA Support | | NC-NCS-230037 | |
| (6) RE-MARKS NO. | (7) NAME OF EMPLOYEE | (8) CLASSIFICATION | (9) DATE | | (10) DATE |
| | | | Military Time | Military Time | |
| T | Chester VonWiggins | DIVS | 0700 | 1130 | |
| | | | 1200 | 1900 | |
| (11) REMARKS | | | | | |
| T = Travel | | | | | |
| Fire Name | | | | | |
| District you are working in | | | | | |
| | | | | | |
| (12) OFFICER-IN-CHARGE (Signature) | | | (13) TITLE (Officer-in-Charge) | | |
| Bridgit Gallagher | | | FSCC(T) | | |
| (14) NAME (Person Posting to Emergency Time Report) | | | | | (15) DATE |

| EMERGENCY EQUIPMENT SHIFT TICKET | | | | | | E-25 | |
|--|--|-------------------|----------------------|------------------------------|--|--|--|
| NOTE: The responsible Government Officer will update this form each day or shift and make initial and final equipment inspections. | | | | | | | |
| 1. AGREEMENT NUMBER | | | 2. CONTRACTOR (name) | | | | |
| 3. INCIDENT OR PROJECT NAME | | | 4. INCIDENT NUMBER | | 5. OPERATOR (name) | | |
| 2023 R-3 Fall IA Support | | | NC-NCS-230037 | | VonWiggins, Chester | | |
| 6. EQUIPMENT MAKE | | | 7. EQUIPMENT MODEL | | 8. OPERATOR FURNISHED BY | | |
| Ford | | | F-150 | | <input checked="" type="checkbox"/> CONTRACTOR <input type="checkbox"/> GOVERNMENT | | |
| 9. SERIAL NUMBER | | | 10. LICENSE NUMBER | | 11. OPERATING SUPPLIES FURNISHED BY | | |
| last 5 of VIN # | | | PP-1234 | | <input checked="" type="checkbox"/> CONTRACTOR (wet) <input type="checkbox"/> GOVERNMENT (dry) | | |
| 12. DATE | | 13. EQUIPMENT USE | | | | | |
| MO/DAY/YR | | START | STOP | HOURS/DAYS/MILES(circle one) | | 14. REMARKS (released, down time and cause, problems, etc.) | |
| | | | | WORK | SPECIAL | T=Travel Rate=\$32.00 Fire Name District you are working in | |
| 11/10/23 | | 0800 | 1200 | 4 | T | | |
| 11/10/23 | | 1200 | 1230 | .50 | | 15. EQUIPMENT STATUS | |
| 11/10/23 | | 2000 | 2030 | .50 | | <input type="checkbox"/> a. Inspected and under agreement <input type="checkbox"/> b. Released by Government <input type="checkbox"/> c. Withdrawn by Contractor | |
| 16. INVOICE POSTED BY (Recorder's initials) | | | | | | 19. DATE SIGNED | |
| 17. CONTRACTOR'S OR AUTHORIZED AGENT'S SIGNATURE | | | | | | 18. GOVERNMENT OFFICER'S SIGNATURE | |
| Chester VonWiggins | | | | | | Bridgit Gallagher | |
| NSN 7540-01-119-562850297-102 | | | | | | OPTIONAL FORM 297 (Rev. 7-90) USDA/USDI | |

2024 NCFS Incident Support, NC-NCS-230041 Examples (All Out-of-State Resources only)

| CREW TIME REPORT | | | | | |
|---|----------------------|--------------------------|--------------------------------|-----------------|-----------|
| (1) CREW NAME | | | (2) CREW NUMBER | | |
| NCFS | | | O-25 | | |
| (3) OFFICE RESPONSIBLE FOR FIRE | | (4) FIRE NAME | | (5) FIRE NUMBER | |
| NCFS | | 2024 NCFS Large Inc Supp | | NC-NCS-230041 | |
| (6) RE-MARKS NO. | (7) NAME OF EMPLOYEE | (8) CLASSIFICATION | (9) DATE | | (10) DATE |
| | | | Military Time | Military Time | |
| T | Chester VonWiggins | DIVS | 0700 | 1130 | |
| | | | 1200 | 1900 | |
| (11) REMARKS | | | | | |
| T = Travel | | | | | |
| Fire Name | | | | | |
| District you are working in | | | | | |
| | | | | | |
| (12) OFFICER-IN-CHARGE (Signature) | | | (13) TITLE (Officer-in-Charge) | | |
| Bridgit Gallagher | | | FSCC(T) | | |
| (14) NAME (Person Posting to Emergency Time Report) | | | | | (15) DATE |

| EMERGENCY EQUIPMENT SHIFT TICKET | | | | | | E-25 | |
|--|--|-------------------|----------------------|------------------------------|--|--|--|
| NOTE: The responsible Government Officer will update this form each day or shift and make initial and final equipment inspections. | | | | | | | |
| 1. AGREEMENT NUMBER | | | 2. CONTRACTOR (name) | | | | |
| 3. INCIDENT OR PROJECT NAME | | | 4. INCIDENT NUMBER | | 5. OPERATOR (name) | | |
| 2024 NCFS Large Incident Support | | | NC-NCS-230041 | | VonWiggins, Chester | | |
| 6. EQUIPMENT MAKE | | | 7. EQUIPMENT MODEL | | 8. OPERATOR FURNISHED BY | | |
| Ford | | | F-150 | | <input checked="" type="checkbox"/> CONTRACTOR <input type="checkbox"/> GOVERNMENT | | |
| 9. SERIAL NUMBER | | | 10. LICENSE NUMBER | | 11. OPERATING SUPPLIES FURNISHED BY | | |
| last 5 of VIN # | | | PP-1234 | | <input checked="" type="checkbox"/> CONTRACTOR (wet) <input type="checkbox"/> GOVERNMENT (dry) | | |
| 12. DATE | | 13. EQUIPMENT USE | | | | | |
| MO/DAY/YR | | START | STOP | HOURS/DAYS/MILES(circle one) | | 14. REMARKS (released, down time and cause, problems, etc.) | |
| | | | | WORK | SPECIAL | T=Travel Rate=\$32.00 Fire Name District you are working in | |
| 11/10/23 | | 0800 | 1200 | 4 | T | | |
| 11/10/23 | | 1200 | 1230 | .50 | | 15. EQUIPMENT STATUS | |
| 11/10/23 | | 2000 | 2030 | .50 | | <input type="checkbox"/> a. Inspected and under agreement <input type="checkbox"/> b. Released by Government <input type="checkbox"/> c. Withdrawn by Contractor | |
| 16. INVOICE POSTED BY (Recorder's initials) | | | | | | 19. DATE SIGNED | |
| 17. CONTRACTOR'S OR AUTHORIZED AGENT'S SIGNATURE | | | | | | 18. GOVERNMENT OFFICER'S SIGNATURE | |
| Chester VonWiggins | | | | | | Bridgit Gallagher | |
| NSN 7540-01-119-562850297-102 | | | | | | OPTIONAL FORM 297 (Rev. 7-90) USDA/USDI | |

*Resource is responsible for turning in all documentation to finance

**Any finance questions can be emailed to ncfs.int.finance@ncagr.gov

(NC-211A, 9/21/2023) NCFS Incident Check-In-Sheet

Incident Name: _____

Instructions Section 1: Single Resources, Crew Boss, Strike Team Leaders, & Task Force Leaders fill in blanks and appropriate check boxes. Place Crews, Strike Teams, or Task Force personnel and equipment on back manifest only.

Incident #: _____

Request #: _____ Contracted Resource? Yes No AD

Assignment (Kind/Position): _____ Trainee: Y N
Task Book: Y N

Name (Last, First): _____

Trainee: Y N

Name of Crew/ST/TF: _____

Task Book: Y N

Agency Name: _____

Other Qualifications: _____

Resource Type: Single Resource Strike Team Task Force Total # of Personnel: _____

Task Book: Y N

Check-in Date: _____ Check-in Time: _____

Trainee: Y N

Unit ID: _____ Call Sign: _____

Task Book: Y N

Demob NCFS Unit: _____
(Region, District, County)

Mobilization Date: _____

Demob City: _____ Demob State: _____

Last Day Off: _____

Jetport (if flying): Departure: _____ Arrival: _____ DOB: _____

Cell Phone Number: _____

Travel Method: Air/Rental Air AOV Bus Passenger POV

Pager Number: _____

Rental Company: _____ Make/Model/Yr: _____ Tag#/St: _____

Emergency Contact Name: _____

Home Address: _____

Emergency Contact Phone: _____

City St Zip

| | | | |
|---------------------|--------|--------|----------|
| For Plans Use Only: | Posted | T-Card | Red Card |
|---------------------|--------|--------|----------|

Instructions Section 2: Provide Call Sign, Tag # and/or Serial # for all applicable equipment

| VEHICLE (Transportation) | CALL SIGN/TAG# | Check one | TPL-TRACTOR PLOW | DZR-DOZER | CALL SIGN |
|------------------------------------|--------------------------|---|-------------------------------|---------------------------------|--------------------|
| AUTO-Car/Sedan | _____ | Type 1 (Komatsu DP65, TD-15C, TD-15E, TD-15F) | _____ | _____ | _____ |
| PUP1-Pickup Type 1 (ex. F-350) | _____ | Type 2 (D6D, 1450 Case, Fiat 10, D5H, TD-12, TD-12XP, JD750C) | _____ | _____ | _____ |
| PUP2-Pickup Type 2 (ex. F-250) | _____ | Type 3 (1150 Case B, 1150 Case E, JD700) | _____ | _____ | _____ |
| PUP3-Pickup Type 3 (ex. F-150) | _____ | Type 4 (TD-9, D4H, D5C, Fiat 8, JD650, Leibher 711, 850 Case) | _____ | _____ | _____ |
| RADV-Radio Engineer Vehicle | _____ | Type 5 (TD-8, JD450) | _____ | _____ | _____ |
| SUVL-Sport Utility Vehicle | _____ | Type 6 (TD-6, JD350, D-3) | _____ | _____ | _____ |
| VANP-Passenger Van | _____ | HEAVY EQUIPMENT | CALL SIGN/TAG# | PUMPS - MBLP | SERIAL# |
| VATV-All Terrain Vehicle | _____ | BHOE-Backhoe | _____ | Portable (Mark III) | _____ |
| VUTV-Utility Terrain Vehicle | _____ | EXCA-Excavator, Type Any | _____ | 4"-6" Discharge | _____ |
| TRUCKS | CALL SIGN/TAG# | FORK-Forklift (_____ lb) | _____ | Volume Lift | _____ |
| LOWB-Lowboy/Hauling Unit | _____ | FTRA-Farm Tractor (_____ hp) | _____ | Volume Lift + Farm Tractor | _____ |
| STK-Stakeside, Type Any | _____ | GRD-Road Grader | _____ | AIRCRAFT | NCFS#/TAIL# |
| STML-Mechanic Truck, Light (F-350) | _____ | LDFR-Front End Loader | _____ | AOSU-Air Ops Cmd. Trailer | _____ |
| STMH-Mechanic Truck, Heavy (F-450) | _____ | TDMP-Dump Truck | _____ | ATS3-SEAT (AT802F) | _____ |
| VBOX-Box Truck, (_____ Duty) | _____ | MISC EQUIP | CALL SIGN/TAG#/SERIAL# | FWAA-Cessna 182 | _____ |
| ENGINE - ENG | CALL SIGN/TAG# | CS-Chainsaw | _____ | FWAA-Cessna 185 | _____ |
| Type 1-1000+ GPM (300+ gal) | _____ | EBAM-E-BAM | _____ | FWAA-Cessna 206 | _____ |
| Type 2-500+ GPM (300+ gal) | _____ | FT-Fuel Tender | _____ | FWCA-Kodiak 100 | _____ |
| Type 3-150 GPM (500-1500 gal) | _____ | GENR-Generator (_____ KW) | _____ | FWLP-T-34 Lead Plane | _____ |
| Type 4-50 GPM (750-1500 gal) | _____ | OFFT-Mobile Office (_____ ft) | _____ | HEL2-UH-1H IA | _____ |
| Type 5-50 GPM (400-749 gal) | _____ | PTBD-Portal Bridge/Bridge Truck | _____ | HEL4-UH-1H+ IA | _____ |
| Type 6-50 GPM (150-399 gal) | _____ | RAWP-Mobile RAWS | _____ | HEL3-AS350-B3 Trans IA | _____ |
| Type 7-10 GPM (50-200 gal) | _____ | RGTR-Rain Gun Trailer | _____ | HOSU-Helio Ops Support Unit | _____ |
| TRACK VEHICLES | CALL SIGN/SERIAL# | TBOT-Boat | _____ | MRBM-Mobile Retardant Base | _____ |
| SKDS-Fire Track | _____ | TRAT-Tractor/Trailer | _____ | UAR2-Unmanned Rotor Wing Type 2 | _____ |
| SKGS-Nodwell/Flex Track/Softtrack | _____ | TRLR-Trailer | _____ | UAR4-Unmanned Rotor Wing Type 4 | _____ |
| WATERTENDER | CALL SIGN/TAG# | OTHER EQUIP | UNIT ID | OTHER EQUIP | UNIT ID |
| WAT-Water Tender, All Sizes | _____ | _____ | _____ | _____ | _____ |

(NC-211A, 9/21/2023) **NCFS Incident Manifest Sheet**

Instructions: Crews, Strike Teams, Task Force, or Groups fill in blanks. Reference equipment types on Check-in Sheet (NC-211A) to complete manifest.

Request #: _____

Incident Name: _____

Unit Name: _____

Leaders Name: _____

PERSONNEL

| # | Name (Last, First) | Position Code | Call Sign | Home Unit | Home City | Last Day Off |
|----|--------------------|---------------|-----------|-----------|-----------|--------------|
| 1 | | | | | | |
| 2 | | | | | | |
| 3 | | | | | | |
| 4 | | | | | | |
| 5 | | | | | | |
| 6 | | | | | | |
| 7 | | | | | | |
| 8 | | | | | | |
| 9 | | | | | | |
| 10 | | | | | | |
| 11 | | | | | | |
| 12 | | | | | | |
| 13 | | | | | | |
| 14 | | | | | | |
| 15 | | | | | | |
| 16 | | | | | | |
| 17 | | | | | | |
| 18 | | | | | | |
| 19 | | | | | | |
| 20 | | | | | | |

EQUIPMENT

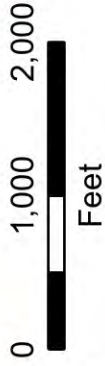
| # | Kind Code | Equipment Description (Call Sign & Make/Model) | Tag #, Tail # or Serial # | Operator's Name (Last, First) |
|----|-----------|--|---------------------------|-------------------------------|
| 1 | | | | |
| 2 | | | | |
| 3 | | | | |
| 4 | | | | |
| 5 | | | | |
| 6 | | | | |
| 7 | | | | |
| 8 | | | | |
| 9 | | | | |
| 10 | | | | |
| 11 | | | | |
| 12 | | | | |
| 13 | | | | |
| 14 | | | | |
| 15 | | | | |
| 16 | | | | |
| 17 | | | | |
| 18 | | | | |
| 19 | | | | |
| 20 | | | | |

R3 Fall IA Support and FY24 NCFS Large Incident Support Phone Roster

| NAME | POSITION | PHONE NUMBERS | ALTERNATE PHONE |
|------------------------------------|----------------------|---------------|-----------------|
| COMMAND & GENERAL STAFF | | | |
| Kevin Harvell | IC | 919-548-4190 | |
| Greg Riggs | SOFC | 252-229-0162 | |
| Chad Brandon | SOFC(t) | 252-567-0823 | |
| Rob Davis | SOF(t) | 252-548-4730 | |
| Jason Guidry | LOFR | 828-273-0982 | |
| James Kimes | LOFR | 919-218-7736 | |
| Carrie McCullen | PIOC | 910-874-2629 | |
| Phillip Jackson | PIOT | 919-641-4973 | |
| AGENCY REPS | | | |
| Washington Agency Rep. | Todd Welker | 360-918-3777 | |
| Washington Agency Rep. | Russ Lane | 360-480-9657 | |
| Oregon Agency Rep. | Blake Ellis | 503-910-2353 | |
| NCFS | Michael Cheek | 828-231-2691 | |
| | | | |
| | | | |
| | | | |
| | | | |
| OPERATIONS | | | |
| David LaFon | OSC | 252-312-4367 | |
| Dwayne Vigil(t) | OSC | 828-593-9282 | |
| Brian Rogers(t) | ITC4 | 828-450-5209 | |
| Trent Duncan | District 1 Forester | 828-667-5211 | |
| Duane Truslow | District 2 Forester | 828-757-5611 | |
| Ruthie Edwards | District 9 Forester | 828-586-4007 | |
| Nancy Blackwood | District 10 Forester | 336-956-2111 | |
| Matt Barker | District 12 Forester | 704-827-7576 | |
| Ken Burns | Staging Support | 828-443-0398 | |
| John Cook | ICT3 | 252-542-0119 | |
| Jonathan Ross | THSP | 704-695-4294 | |
| Kit Gibbs | UAS Pilot | 252-721-8184 | |
| FINANCE | | | |
| Ron Meyers | FSC | 919-902-1842 | |
| Bridgit Gallagher(t) | FSCC(t)/COST | 828-243-5950 | |
| Renee Strickland | TIME | 919-868-6327 | |
| Jeana McDuffie | EQTR/PTRC | 910-770-2453 | |
| Kristi Wilson | PTRC(t) | 910-206-1047 | |
| | | | |
| | | | |
| PLANNING | | | |
| Dennis Register | PSCC | 252-229-0165 | |
| Austin Harriett | RESL | 252-229-0810 | |
| Richard Cockerham | SILT | 704-616-0747 | |
| Robin Roberson | DOCL | 919-636-0737 | |
| John Willis | SCKN(t) | 704-910-9063 | |
| Lisa Hartrick | DMOB | 910-874-0905 | |
| | | | |
| LOGISTICS | | | |
| Jamie Logan | LSCC | 828-399-1141 | |
| Patrick Raynor | ORDM | 336-239-2377 | |
| Derek Arney | FACL | 828-413-0457 | |
| Frankie Britt | GSUL | 910-234-1311 | |
| Jimmy Meadows | COML | 252-229-7307 | |
| Bruce Scott | COMT | 828-545-9209 | |
| Jacob Wheeler | RADO | 910-985-0303 | |
| Wayne Pugh | EQPM | 252-945-3199 | |
| Jason Wade | ORDM(t) | 910-309-8654 | |
| Travis Ruff | ORDM | 828-443-1303 | |
| Clyde Leggins | FDUL | 828-334-2340 | |
| Stewart Niemyer | MEDL | 910-434-3258 | |
| Chris Williams | GMEC | 910-501-7759 | |
| | | | |
| | | | |

IAP Map

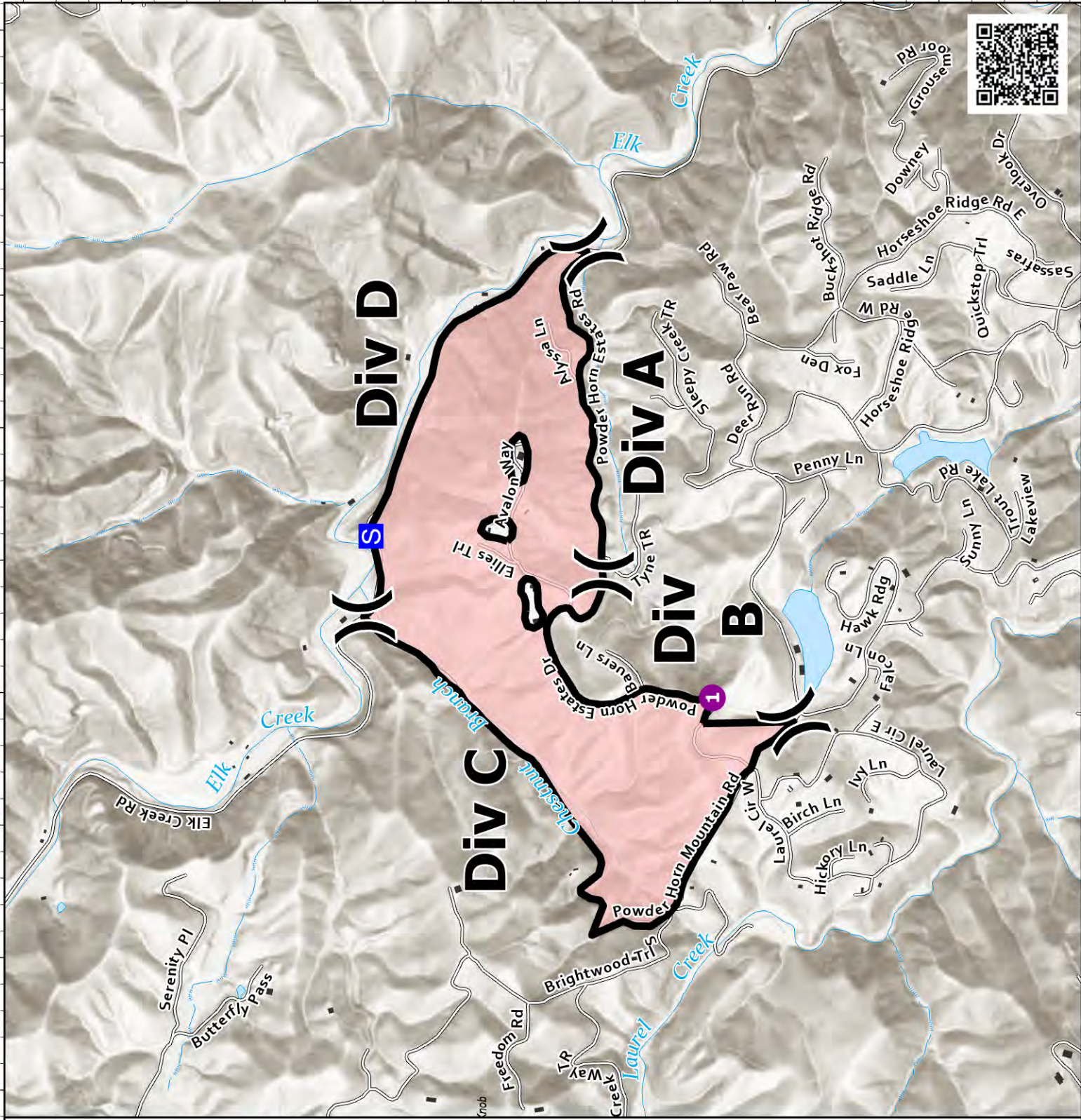
Elk Creek
NC-NCS-230044
11/15-11/20/2023 Final
225 acres at 11/9/23 14:26



- Wildfire Daily Fire Perimeter
- Contained
- Helispot
- Division Break
- Staging Area
- Gap; Summit
- Road, Unspecified
- Stream/River
- Stream/River Intermittent
- Lake / Pond
- Structure FEMA



NCFS IMT
11/16/2023 1702
Acres from Mixed Methods
North American 1983 Datum



81°30.5'W

81°30'W

81°29.5'W

36°8.5'N

36°8.5'N

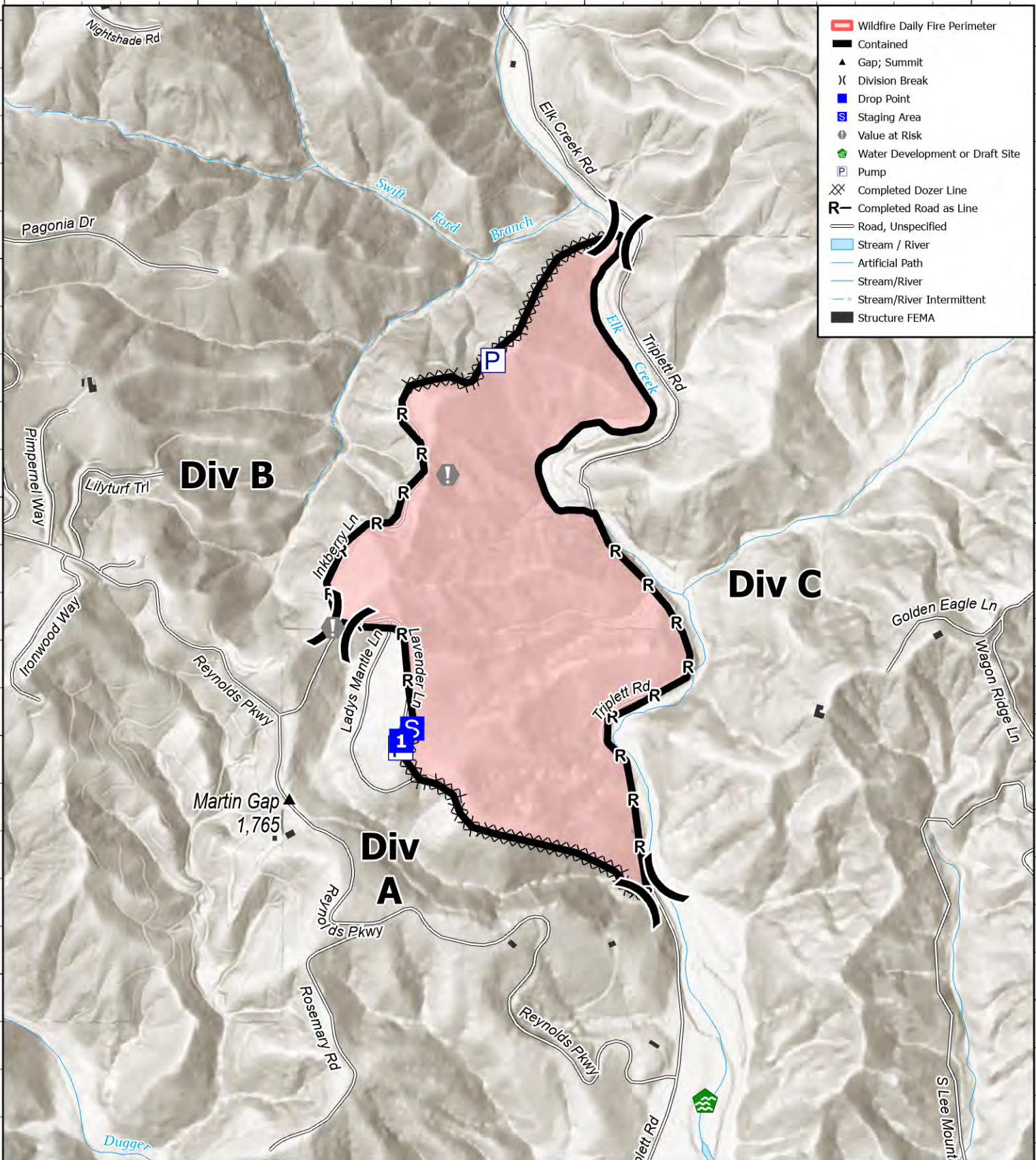
36°8'N

36°8'N

36°7.5'N

36°7.5'N

36°7.5'N



IAP Map

Triplet
NC-NCS-230045
11/15-11/20/2023 Final

107 acres at 11/11/2023 @ 1822hrs



0 700 1400



Feet



NCFS IMT
11/16/2023 1707
Acres from GPS/GIS
North American 1983 Datum.

81°30.5'W

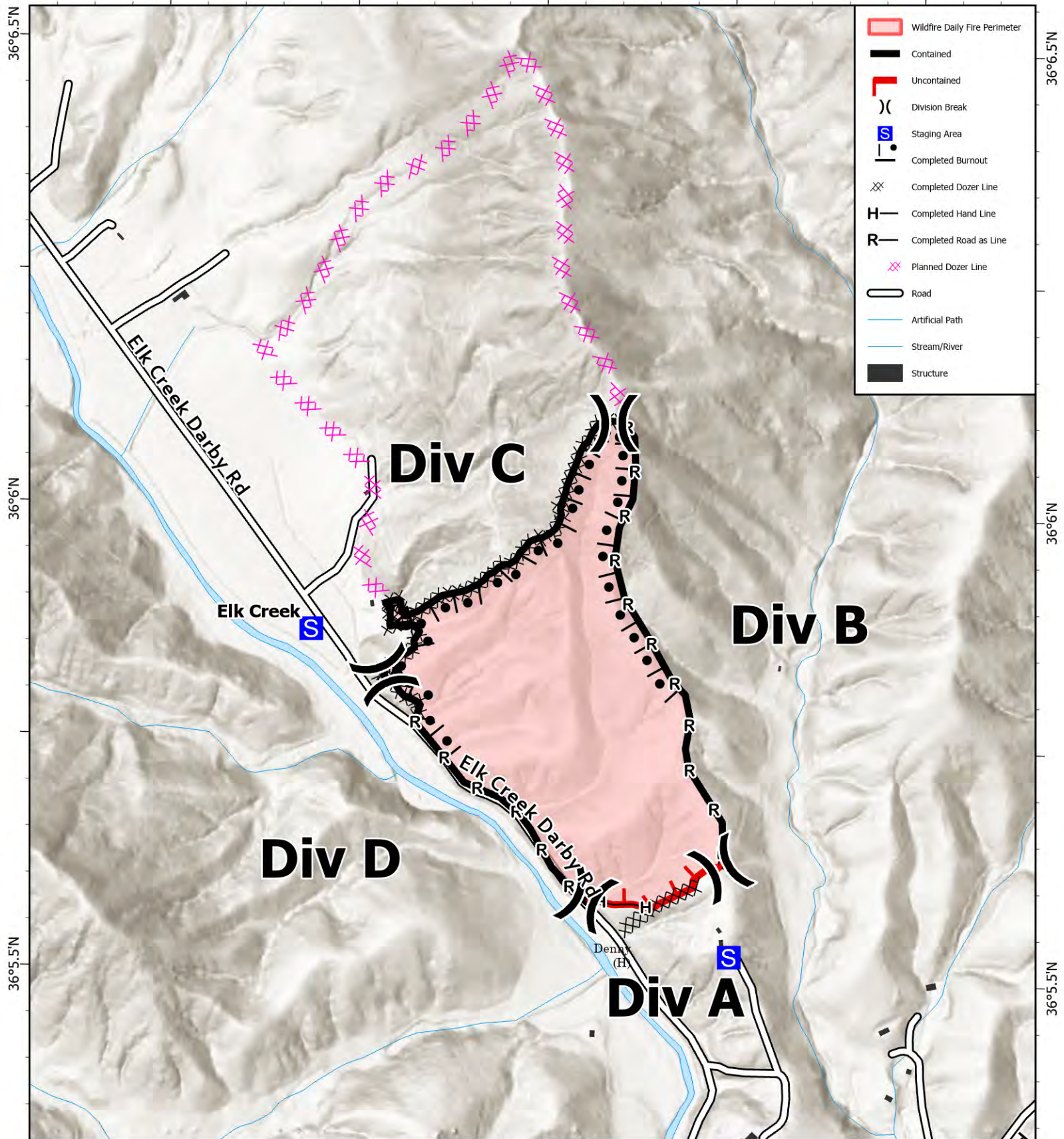
81°30'W

81°29.5'W

81°26'W

81°25.5'W

81°25'W



- Wildfire Daily Fire Perimeter
- Contained
- Uncontained
- Division Break
- S Staging Area
- Completed Burnout
- Completed Dozer Line
- Completed Hand Line
- Completed Road as Line
- Planned Dozer Line
- Road
- Artificial Path
- Stream/River
- Structure

36°6.5'N

36°6.5'N

36°6'N

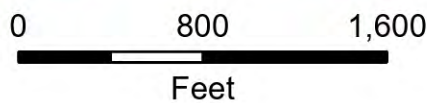
36°6'N

36°5.5'N

36°5.5'N

IAP Map

Branch
 NC-NCS-230037
 11/17/2023 Day Shift
 77 acres at 11/12/2023 1446



NCFS IMT
 11/16/2023 1715
 Acres from GIS and GPS
 North American 1983 Datum

81°26'W

81°25.5'W

81°25'W

IAP, PDF Fire Maps & PIO

**Current NC Wildfire
Situation Report**



Poplar Drive IAP



Poplar Drive Fire Map



Tripplett Fire Map



Elk Creek Fire Map



R3 IA Map



11/17/2023

TENTATIVE RELEASE

2023 R-3 FALL IA SUPPORT US-NC-NCS-230037

CREW

| | | | | <u>DEMOB AT</u> |
|-----|--|-------|------------------------|-----------------|
| C-5 | | (HCM) | HCM MODULE NCWRC-SYLVA | D-9 |

EQUIPMENT

| | | | | |
|------|------|--------|--------------------------|---------|
| E-11 | 0000 | (ENG6) | ENG6 8-20 WALKER PB-2735 | Staging |
| E-14 | 0000 | (PUP3) | PUP3 3-4E BELL PP-9487 | D2 |
| E-16 | 0000 | (ENG6) | ENG6 8-24 PP-4171 | ICP |
| E-24 | 0000 | (ENG6) | ENG6 11-20 PB-5720 | D1 |
| E-25 | 0000 | (ENG6) | ENG6 4-71 PJ-6814 | D1 |
| E-27 | 0000 | (ENG6) | ENG6 5-21 PJ-5943 | D1 |

OVERHEAD

| | | | | |
|------|------|--------|--------------------------|---------|
| O-14 | 0000 | (ICT4) | BELL, WILL 3-4 | D2 |
| O-19 | 0000 | (ICT4) | JOHNSON, GENE 11-20 | D1 |
| O-16 | 0000 | (STEN) | MATTHEWS, ALAN 8-24 | ICP |
| O-22 | 0000 | (ICT5) | PENNINGTON, PRESTON 5-21 | D1 |
| O-20 | 0000 | (ICT5) | TOOMER, KEITH 4-71 | D1 |
| O-11 | 0000 | (ICT4) | WALKER, WILLIAM 8-20 | Staging |

11/18/2023

TENTATIVE RELEASE

2023 R-3 FALL IA SUPPORT US-NC-NCS-230037

EQUIPMENT

| | | | | <u>DEMOB AT</u> |
|------|----------------------------|--------|------------------------------|-----------------|
| E-12 | 0000 | (ENG6) | ENG6 8-41 STRICKLAND PA-8504 | D2 |
| E-15 | 0000 | (PUP3) | PUP3 R1-31E BARNETTE PB-3046 | D2 |
| E-19 | Simpson13-30/Bresslin13-20 | (ENG6) | ENG6 13-30 PP-9559 | Staging |
| E-22 | 0000 | (PUP1) | ENG6 8-42 PA-1472 | D12 |

OVERHEAD

| | | | | |
|------|------|--------|---------------------------|-----|
| O-15 | 0000 | (OPBD) | BARNETTE, BILLY R1-31 | D2 |
| O-17 | 0000 | (ICT4) | SPIVEY, JONATHAN 8-42 | D12 |
| O-12 | 0000 | (ICT4) | STRICKLAND, RAYMOND "REX" | D2 |

11/19/2023

TENTATIVE RELEASE

2023 R-3 FALL IA SUPPORT US-NC-NCS-230037

EQUIPMENT

DEMOB AT

| | | | | |
|-------|----------------------------|--------|-----------------------|---------|
| E-7 | 0000 | (PUP1) | ENG6 7-50E PJ-9238 | D9 |
| E-20 | Garrett13-40/Gilkerson13-2 | (ENG6) | ENG6 13-40 PP-3526 PU | Staging |
| E-95 | 0000 | (PUP3) | 7-3 PJ-6257 | D1 |
| E-514 | 0000 | (PU) | PU 2-7 PA-5694 | ICP |

OVERHEAD

| | | | | |
|-------|------|--------|----------------------|---------|
| O-78 | 0000 | (HEQB) | BLAKE, MICHAEL 7-3 | D1 |
| O-503 | 0000 | (ICT4) | DAVIS , CHARLES 2-7 | ICP |
| O-118 | 0000 | (SCKN) | GILKESON, CATHY 13-2 | Staging |
| O-7 | 0000 | (HEQB) | KELLER, JACK 7-24 | D9 |

MEDICAL PLAN (ICS 206 WF)

Controlled Unclassified Information//Basic

Medical Incident Report

FOR A NON-EMERGENCY INCIDENT, WORK THROUGH CHAIN OF COMMAND TO REPORT AND TRANSPORT INJURED PERSONNEL AS NECESSARY.

FOR A MEDICAL EMERGENCY: IDENTIFY ON-SCENE INCIDENT COMMANDER BY NAME AND POSITION AND ANNOUNCE "MEDICAL EMERGENCY" TO INITIATE RESPONSE FROM IMT COMMUNICATIONS/DISPATCH.

Use the following items to communicate situation to communications/dispatch.

1. CONTACT COMMUNICATIONS / DISPATCH (Verify correct frequency prior to starting report)

Ex: "Communications, Div. Alpha. Stand-by for Emergency Traffic."

2. INCIDENT STATUS: Provide incident summary (including number of patients) and command structure.

Ex: "Communications, I have a Red priority patient, unconscious, struck by a falling tree. Requesting air ambulance to Forest Road 1 at (Lat./Long.) This will be the Trout Meadow Medical, IC is TFLD Jones. EMT Smith is providing medical care."

| | | |
|---|---|---|
| Severity of Emergency / Transport Priority | <input type="checkbox"/> RED / PRIORITY 1 Life or limb threatening injury or illness. Evacuation need is IMMEDIATE <i>Ex: Unconscious, difficulty breathing, bleeding severely, 2^o – 3^o burns more than 4 palm sizes, heat stroke, disoriented.</i> <input type="checkbox"/> YELLOW / PRIORITY 2 Serious Injury or illness. Evacuation may be DELAYED if necessary. <i>Ex: Significant trauma, unable to walk, 2^o – 3^o burns not more than 1-3 palm sizes.</i> <input type="checkbox"/> GREEN / PRIORITY 3 Minor Injury or illness. Non-Emergency transport <i>Ex: Sprains, strains, minor heat-related illness.</i> | |
| Nature of Injury or Illness & Mechanism of Injury | | <i>Brief Summary of Injury or Illness (Ex: Unconscious, Struck by Falling Tree)</i> |
| Evacuation Request | | <i>Air Ambulance / Short Haul/Hoist Ground Ambulance / Other</i> |
| Patient Location | | <i>Descriptive Location & Lat. / Long. (WGS84)</i> |
| Incident Name | | <i>Geographic Name + Medical (Ex: Trout Meadow Medical)</i> |
| On-Scene Incident Commander | | <i>Name of on-scene IC of Incident within an Incident (Ex: TFLD Jones)</i> |
| Patient Care | | <i>Name of Care Provider (Ex: EMT Smith)</i> |

3. INITIAL PATIENT ASSESSMENT: Complete this section for each patient as applicable (start with the most severe patient)

Patient Assessment: See IRPG PAGE 106

Treatment:

4. EVACUATION PLAN:

Evacuation Location (if different): (Descriptive Location (drop point, intersection, etc.) or Lat. / Long.) Patient's ETA to Evacuation Location:

Helispot / Extraction Site Size and Hazards:

5. ADDITIONAL RESOURCES / EQUIPMENT NEEDS:

Example: Paramedic/EMT, crews, immobilization devices, AED, oxygen, trauma bag, IV/fluid(s), splints, rope rescue, wheeled litter, HAZMAT, extrication

6. COMMUNICATIONS: Identify State Air/Ground EMS Frequencies and Hospital Contacts as applicable

| Function | Channel Name/Number | Receive (RX) | Tone/NAC * | Transmit (TX) | Tone/NAC * |
|-------------|---------------------|--------------|------------|---------------|------------|
| COMMAND | | | | | |
| AIR-TO-GRND | | | | | |
| TACTICAL | | | | | |

7. CONTINGENCY: Considerations: If primary options fail, what actions can be implemented in conjunction with primary evacuation method? Be thinking ahead..

8. ADDITIONAL INFORMATION: Updates/Changes, etc.

REMEMBER: Confirm ETAs of resources ordered. Act according to your level of training. Be Alert. Keep Calm. Think Clearly. Act Decisively.

