

R3 FALL IA SUPPORT

NC-NCS-230037
Fiori Time Code: G/T/F 1434

FY24 NCFS INCIDENT SUPPORT

NC-NCS-230041
Financial Code: PN QRN9



November 19, 2023
Sunday

Operational Period Day 0700-1900 hrs.

R3 Severity
IAP



INCIDENT OBJECTIVES	1. INCIDENT NAME	2. DATE PREPARED	3. TIME PREPARED
	2023 R-3 Fall IA Support and FY24 NCFS Incident Support	11/18/23	1700
4. OPERATIONAL PERIOD (DATE/TIME) November 19, 2023 Day 0700-1900			
5. GENERAL CONTROL OBJECTIVES FOR THE INCIDENT (INCLUDE ALTERNATIVES)			
<ol style="list-style-type: none"> 1. Provide for safety of our firefighters, assigned resources and public through adequate work rest ratios, risk assessments, hazard mitigation and information dissemination. 2. Assist North Carolina Forest Service Mountain Region in planning, resource tracking, and financial tracking of the 2023 R3 Fall IA Support and FY 24 NCFS Incident Support resources. 3. Manage fires in cost effective manner. Maintain accurate cost estimates of the incident and provide daily updates through morning reports and afternoon situation reports. 4. All incident personnel will be treated with dignity and respect. We exhibit care, concern, and consideration for others. This incident has zero tolerance for harassment, alcohol or drug use. 			
6. WEATHER FORECAST FOR OPERATIONAL PERIOD Districts should provide updated weather forecast to resources			
7. GENERAL SAFETY MESSAGE <u>HYDRATION/HEAT STRESS</u>- drink often and drink a lot, before you get thirsty. 4:1 water to sports drinks.			
8. ATTACHMENTS (✓ IF ATTACHED)			
<input checked="" type="checkbox"/> ORGANIZATION LIST (ICS 203) <input checked="" type="checkbox"/> MEDICAL PLAN (ICS 206) <input checked="" type="checkbox"/> SAFETY MESSAGE <input checked="" type="checkbox"/> ASSIGNMENT LIST (ICS 204) <input type="checkbox"/> INCIDENT MAP <input checked="" type="checkbox"/> PHONE LIST <input type="checkbox"/> COMMUNICATIONS PLAN (ICS 205) <input type="checkbox"/> TRAVEL MAP <input type="checkbox"/>			
9. PREPARED BY (RESOURCE UNIT LEADER) Austin Harriett		10. APPROVED BY (INCIDENT COMMANDER) Kevin Harvell	

Fuels and Fire Behavior Advisory

Southern Appalachian Mountains and Piedmont

Effective November 13, 2023

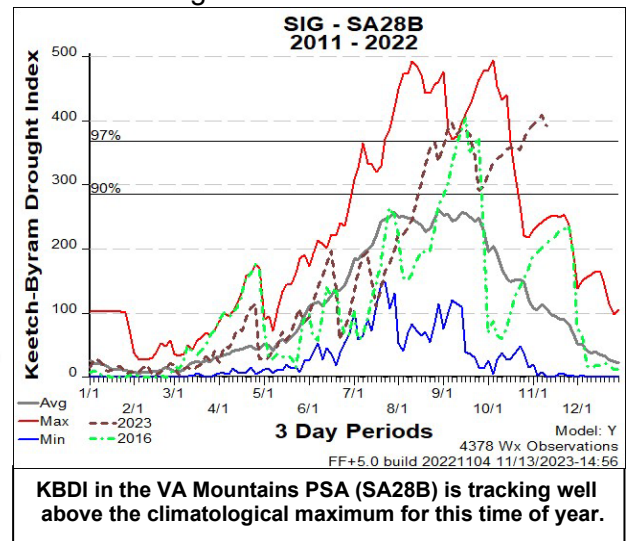
Subject: Increased fire danger in the hardwood-dominant Southern Appalachians due to ongoing drought

Discussion: Severe to exceptional drought has expanded across the Southern Appalachians and portions of the Piedmont in recent weeks, while seasonal leaf off continues to progress down from the higher elevations. The availability of fresh leaf litter and extremely dry duff layers on the surface are both contributing to difficulties controlling and containing ongoing wildfires. Recent light rain has only temporarily reduced fire danger. Long-term rainfall deficits combined with another period of abnormally dry air and poor overnight recoveries will result in critically low dead fuel moisture and a sharp increase in risk. Conditions within and adjacent to the advisory may degrade further if soaking rainfall does not return in the next one to two weeks, but confidence in weather conditions is lower than normal beyond the 5-day period.

Difference from normal conditions: Fire danger indices across the advisory area have increased to levels that are locally on par with conditions in the fall of 2016. Owing to 30-, 60- and 90-day rainfall deficits well below 25% of normal, 100- and 1000-hour fuels are critically dry, resulting in extensive mop-up operations. Additionally, multiple fires have remained active through the overnight hours as a result of the drought-impacted duff layer burning readily and holding heat. The energy release component (ERC) in several Predictive Service Areas (PSAs) recently surpassed historic levels observed in the fall of 2016, while KBDIs are tracking near the climatological maximum in portions of the area (as shown below). Fuels that normally burn during the spring fire season, such as Mountain Laurel and Rhododendron, are actively burning and contributing to fire spread. Active torching in young pine has also been observed under moderate burning conditions.

Concerns to Firefighters and the Public: Any fire in this area may be resistant to control efforts. Expect:

- a high probability for ignitions and spotting in *extremely dry* down and dead fuels;
 - elevated or higher fire line intensity during both initial attack and extended attack;
 - holding issues on handlines and the need for extended mop-up - freshly fallen leaves may need to be blown off containment lines regularly where leaf off has not reached completion;
 - higher than normal fire intensities in areas of complex terrain, which may preclude direct attack of fires;
 - the risk for fires to encroach on the wildland-urban interface, which has grown substantially since 2016;
 - extreme fire behavior and rates of spread if terrain-enhanced wind events, extended periods of low RH or other critical fire weather patterns materialize.
- See the Southern Area Fall [Risk Assessment](#) for an overview of critical fire weather patterns in the region, which may include dry cold fronts, distant tropical cyclones and [mountain waves](#).



Mitigation Measures:

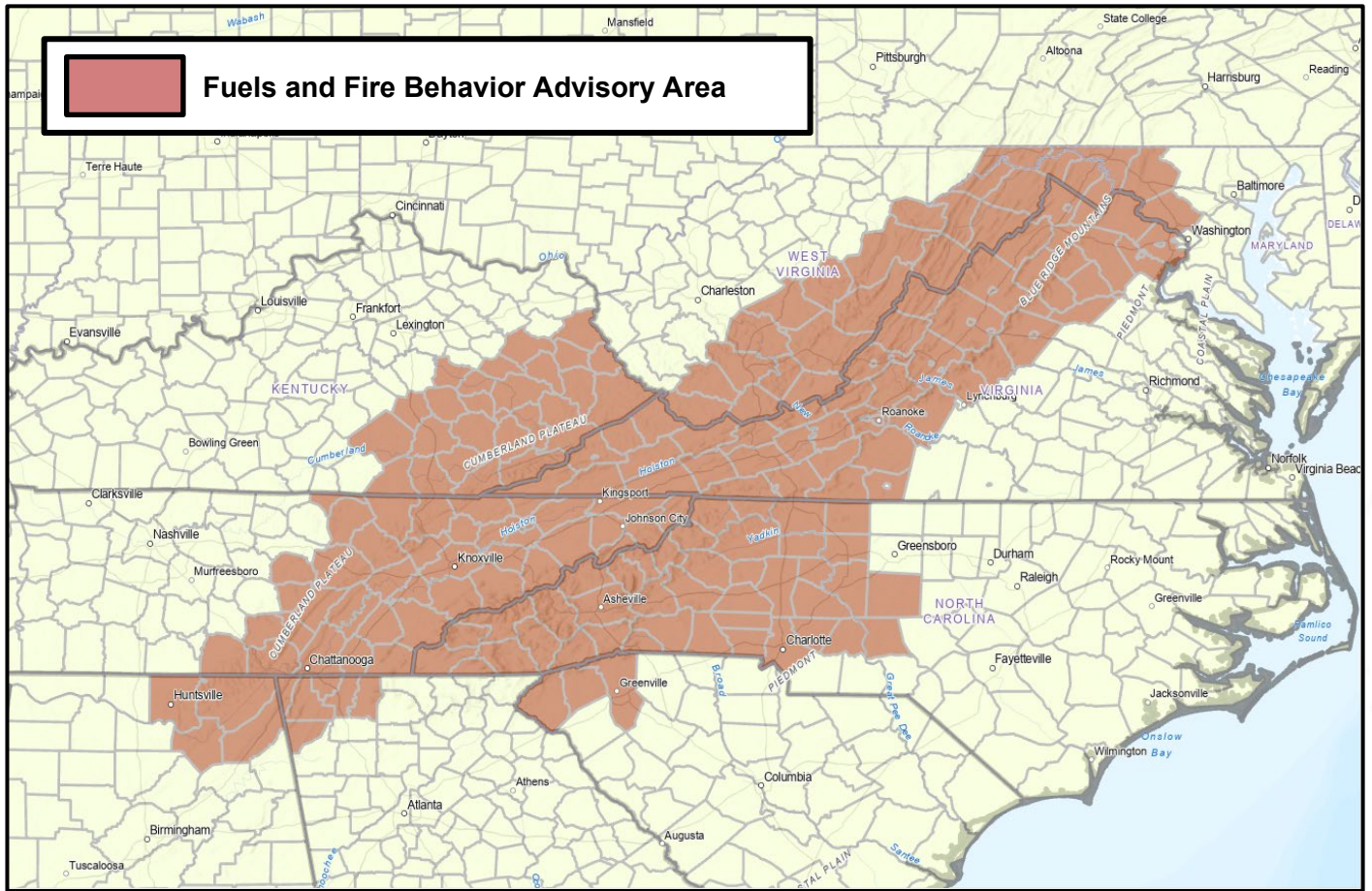
- Do not expect any fire to be routine.
- Fire managers should be prepared to support periods of increasing fire occurrence, as well as complex, potentially long-duration incidents.
- Utilize indirect tactics and plan for extended mop-up, with periodic patrolling of control lines.
- Utilize aerial supervision to help direct crews and keep them informed on fire behavior.
- Ensure adequate daily briefings for initial attack resources, especially if critical fire weather is forecast.
- Make sure that LCES is in place before engaging on any fire. Remember to STOP, THINK and TALK before you ACT.

Issued By: Southern and Eastern Area Predictive Services in coordination with state and federal partners.

Fuels and Fire Behavior Advisory

Southern Appalachian Mountains and Piedmont

Effective November 13, 2023



Fresh leaf litter is contributing to fire spread under Rhododendron on the Collett Ridge Fire in North Carolina (left, National Forests of NC). Fires have been actively burning throughout the overnight hours in portions of the Appalachians (right, VA Department of Forestry).

MOUNTAIN WAVE WIND EVENTS

Mountain waves occur amid stable air masses with strong temperature inversions near mountainous terrain and are most common through late fall and winter in the Appalachians.

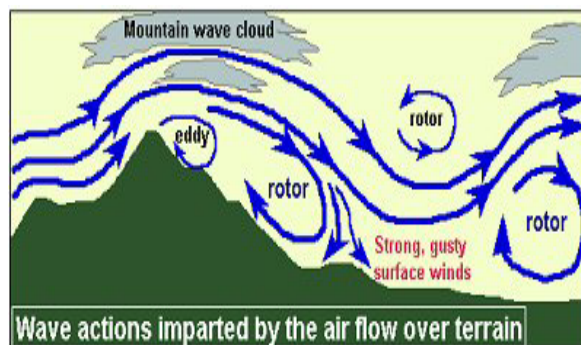
They may occur near any elevated terrain in the geographic area, as long as the **wind direction**

aloft lies within 30 degrees of being perpendicular to a ridge line. The southern Appalachians traditionally experience them in pre-frontal environments, often at night, as warm and moist Atlantic or Gulf air surges northwards or northwestwards ahead of an approaching low pressure system and its cold front. The most common weather pattern associated with them features a strong low pressure system moving through the Ohio Valley or Great Lakes.

Indicators and Watchouts:

- Roll clouds aligned with ridgeline topography
- National Weather Service high wind warnings associated with pre-frontal (southeast) or post-frontal (northwest) winds
- Highly localized
- Not possible to forecast due to model and data limitations
- Higher winds often accompanied by much drier air mass
- Expect erratic fire behavior and rapid fire growth

Although their footprint is often quite narrow, **extreme winds in excess of hurricane-force (80 – 100 mph) can occur on the lee or downwind side of ridges**, with a rapid and unexpected shift in wind direction also a distinct possibility. Humid and cool conditions may be suddenly interrupted as drier air aloft accelerates towards the ground, resulting in **extreme winds and a sudden decrease in relative humidity.** Areas downwind of steep gradients in terrain are most susceptible. The east side of the Appalachians can see mountain wave events that lead to enhanced winds and subsidence in post-frontal environments as well. In addition to enhancing fire weather and potentially leading to extreme fire behavior, mountain waves can contribute to new ignitions from downed power lines and restrict air ops due to potential IFR conditions and severe to extreme turbulence.



CHIMNEY TOPS 2 FIRE

- Date: November 28, 2016
- Location: GSMNP, Sevier County, TN
- Persistent severe drought conditions
- 87 mph wind gusts due to Mountain Wave Wind Event recorded
- Fire growth from 35 acres to 17,000 acres in 24 hours
- 14 deaths
- 2,501 structures impacted

HEALTH AND SAFETY MESSAGE

SAFETY starts with YOU!

INCIDENT NAME: R3 FALL IA SUPPORT

OPERATIONAL PERIOD: Nov. 18-19, 2023

Fire Order #2. Know What your Fire is Doing at All Times

KNOWN HAZARDS

ACCOUNTABILITY

During this fire season we have an influx of out of state and in state cooperating partners. I urge our incident commanders and supporting fire fighters to take the time to ensure you have accountability for all responding resources. Know who is coming to your initial attack fires and ensure those resources have made it off the fire scene and safely back to accommodations before going off shift.

We have the responsibility to be a good host and ensure the resources have a positive experience here and are well taken care of while assisting us in our time of need.

STEEP AND ROCKY TERRIAN

Be deliberate of foot placement when walking on steep terrain. Rocks will become loose when walking on them. They may cause fire fighters to turn ankles or fall. Additionally, loose rocks will roll downhill making for hazardous conditions for fire fighters lower on the fire line. Call out falling rocks so that others below can avoid them.

SNAGS AROUND THE FIRE AREA

Avoid working under snags and trees with dead branches hanging from them. Especially during windy conditions. Use chainsaws to remove trees from the fire area is safely able to do so. Fallers should be qualified or under the direct supervision of a qualified faller.

HOLIDAY TRAFFIC AND INCREASED DRIVING HAZARDS

Increased traveling from civilian traffic is anticipated through out this weekend and next week due to the Thanksgiving Holiday. We urge our resources to drive courteously and defensively. We represent the NC Forest Service and the National Fire community. Leave with plenty of time to arrive at your location, anticipate heavier than usual traffic delays. Take extra precaution when driving at night, ensure safe following distances while driving, remember it takes at least 2-3 three car lengths to stop a vehicle and a avoid a rear end collision. Be professional always and be mindful that others on the road may be experiencing stress and fatigue. Please use extreme caution with using emergency traffic and abide by all laws as well as NCFs policy and procedure.

NIGHT OPERATIONS

Night operations present a unique set of safety concerns for wildland fire suppression. Take the time during the day's shift to ensure you are prepared for any time operations you may be a part of. Steps can include; ensure that you have adequate lighting for vision during the night, make sure to have reflective material on your line gear, PPE and your outer garments. Carry extra batteries for headlamps and check them for operability prior to needing them. As always, heavy equipment should be given a large area to work in free of fire fighters and apparatus. As a general rule of thumb, the area surrounding any equipment should be given two and a half times the tree height to work in and even more after night falls.

COMPLACENCY

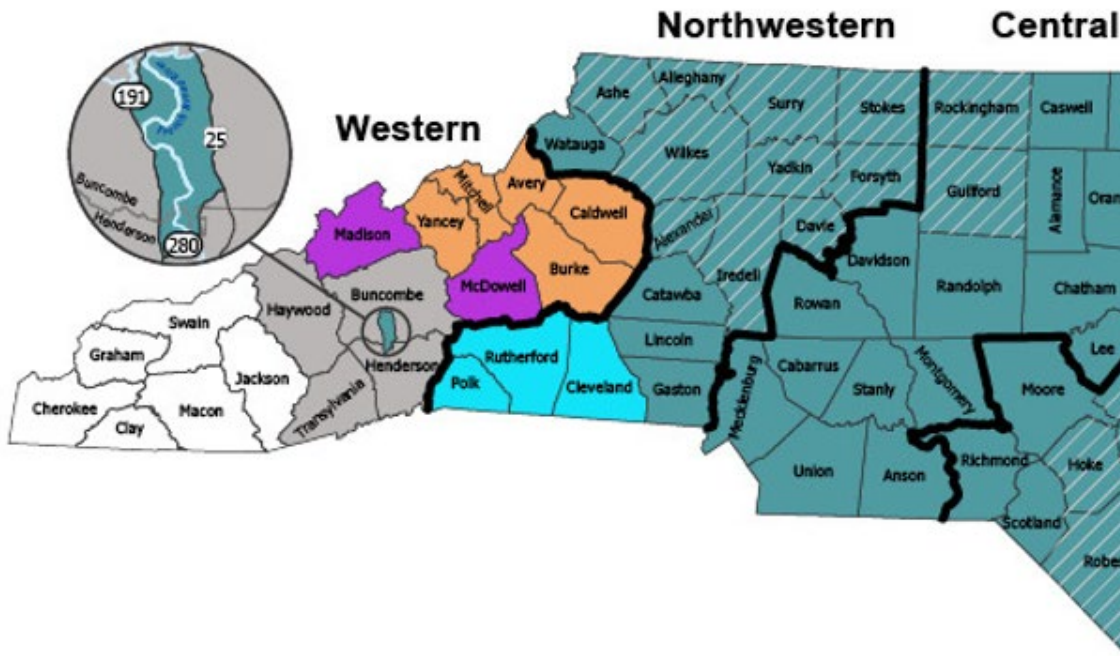
Keep your mind sharp and on task. Complacent attitudes invite accidents and injuries. After several days of little to no fire activity and completing the same task, people may become complacent and take their minds off the seriousness of the job. Maintain your situational awareness and continue to practice your risk management.

ACCIDENTS & INJURIES

Discuss during tailgate briefings what the plan is if there is an injury in the field. Know what your role will be in the response to the emergency. In the event of an emergency or an injury on the fire, call 911 and report the location and nature of the emergency. Provide first aid to the injured party first and foremost. Secure the scene so that other fire fighters or responders are not endangered and follow the emergency medical procedure for notifications.

Safety Officers: Greg Riggs SOFC/Chad Brandon SOFC(t)/CR Davis SOFC(t)

Western and Northwestern Deer Zone Season Dates for Gun Hunting in NC



NORTHWESTERN ANTLERED DEER SEASON	
Archery	Sept. 9 – Nov. 3, 2023
Blackpowder	Nov. 4 – Nov. 17, 2023
Gun	Nov. 18, 2023 – Jan. 1, 2024
WESTERN ANTLERED DEER SEASON	
Archery	Sept. 9 – Oct. 1, 2023, Oct. 15 – Nov. 19, 2023, and Dec. 10, 2023 – Jan. 1, 2024 (antlered only)
Blackpowder	Oct. 2 – Oct. 14, 2023
Gun	Nov. 20 – Dec. 9, 2023

- Check in and out with someone, wear bright colored clothing, make noise, work in pairs.
- Talk with landowners to see if hunters will be in the area.
- If possible, avoid popular times such as early in the morning or late in the afternoon.
- Park your vehicle where it is easily seen.
- Use a headlamp or other light source during low light conditions.
- Rifles are allowed during North Carolina gun seasons.
- Confirm if you are working in a high use area such as a public game land.



Steven W. Troxler
Commissioner

**North Carolina Department of Agriculture
and Consumer Services**
N.C. Forest Service



Gregory M. Hicks
Assistant Commissioner

R3 Fall IA Support Emergency Medical Procedure

- Begin patient care and establish an IWI IC
- Call by phone 911 or central communication by county radio if on scene with local NCFS county personnel.
- After arranging patient care and transport begin the 8-line process.
- Call in the 8-line medical documentation to the district operations of the district that you are working in via phone or radio.
- District operations will make notification to R3 operations and Incident safety via e-mail. Make additional notification via phone to incident safety via phone if code red or black.
- Incident safety will make necessary notification to IMT members and document.

D1 D1opsrm@ncagr.gov 828 667 5211

D2 D2opsrm@ncagr.gov 828 757 5611

D9 D9opsrm@ncagr.gov 828 586 4007

D10 D10opsrm@ncagr.gov 336 956 2111

D12 D12opsrm@ncagr.gov 704 827 7576

R3 R3opsrm@ncagr.gov 828 665 8688

Davis SOFC (t) Robb.Davis@ncagr.gov 252 548 4730

Chad Brandon SOFC (t) Chad.Brandon@ncagr.gov 252 904 5614

Greg Riggs SOFC Greg.Riggs@ncagr.gov 252 229 0162

DIVISION ASSIGNMENT LIST			1. BRANCH		2. Division/Group District 2		
3. Incident Name 2023 R3 Fall IA Support and FY24 NCFS Incident Support			4. Operational Period Date: 11/19/23 Time: 0700-1900				
5. Operations Personnel							
ICT3	John Cook		District Forester		Duane Truslow		
Branch Director			LSC3		Travis Shidal		
6. Resources Assigned This Period							
Strike Team/Task Force/ Resource Designator	Leader	Last Shift	Resource #	Number Persons	Phone #	Reporting Location	
ICT3	Walter Escobar	11/25	O-17	1	509-398-1222	D2 HQ	
DIVS / ICT4(t) R1-4	Jonathan Ambrose	11/30	O-98	1	252-560-6478	D2 HQ	
DIVS	Ken Foss	11/28	O-11	1	253-318-2678	D2 HQ	
DIVS	Timothy Love	11/25	O-14	1	509-563-9367	D2 HQ	
DIVS(t)	Brett Walker	11/25	O-26	1	509-680-4029	D2 HQ	
TFLD	Jay Strider	11/28	O-99	1	910-434-3711	D2 HQ	
TFLD	Shannon Clark	11/25	O-5	1	360-770-4977	D2 HQ	
SMOD Highlands WA	Hunter Forthun	11/25	O-2	10	509-419-9530	D2 HQ	
HCM NCWRC Asheville	Brandon Bridges	11/21	C-4	7	828-764-3816	D2 HQ	
ICT4 6-40	Jason O'Neal	11/28	O-104	1	910-309-8954	Avery County HQ	
DZOP 6-25 Operating 2x3	Jeremy Peterson	11/27	O-107	1	910-987-9826	Wilkes County HQ	
TFLD	Connor Lane	11/25	O-21	1	541-842-0203	Branch Fire	
TFLD	Joe Thorpe	11/25	O-8	1	509-899-1847	Branch Fire	
TFLD(t)	Austin Russell	11/25	O-25	1	360-878-4824	Branch Fire	
ENG6 Crooks FD – Scat 36	Anthony Beam	11/26	E-5	3	970-580-2955	Branch Fire	
ENG 6 National Wildland Fire	Austin Martin	11/26	E-6	3	505-360-4517	Branch Fire	
ENG6 Fire Cat	Bob Harrow	11/26	E-20	3	308-872-2096	Branch Fire	
ENG6 Trumen Bob E464	Kolten Bob	11/26	E-7	3	575-937-8686	Branch Fire	
ENG6 Vakkyrie	Charles Reese	11/26	E-9	2	520-603-1239	Branch Fire	
SMOD SE Washington	Jeffrey Delarosa	11/25	O-1	11	509-899-0837	Branch Fire	
7. Control Operations Assist with Initial Attack of new starts and mop up existing fires within District 2.							
8. Special Instructions							
Function	Frequency	System	Channel	Function	Frequency	System	Channel
Command		NCFS		Logistics		NCFS	
Tactical Div/Group		NCFS		Air to Ground		NCFS	
Prepared By (Resource Unit Leader) Austin Harriett		Approved By (Planning Sect. Ch.) Dennis Register		Date 11/18/23		Time 1900	

DIVISION ASSIGNMENT LIST		1. BRANCH		2. Division/Group District 9			
3. Incident Name 2023 R3 Fall IA Support and FY24 NCFS Incident Support		4. Operational Period Date: 11/19/23 Time: 0700-1900					
5. Operations Personnel							
Operations Chief		District Forester		Ruthie Edwards			
Branch Director							
Can 6. Resources Assigned This Period							
Strike Team/Task Force/ Resource Designator	Leader	Last Shift	Resource #	Number Persons	Phone #	Reporting Location	
DZOP	Cooper Aycock	11/21	O-73	1	252-567-8066	Cherokee County HQ	
FFT1	Nathaniel Nucci	11/26	O-94	1	910-874-0707	Cherokee County HQ	
ICT4	Kyle Powell	11/26	O-90	1	910-840-1526	Graham County HQ	
ICT5	Madelyn Mahon	11/25	O-95	1	252-339-4303	Haywood County HQ	
ICT5	Adam Huffman	11/27	O-91	1	919-631-7546	Haywood County HQ	
DIVS	Brent O'Nion	11/26	O-29	1	503-781-2391	Haywood County HQ	
FFT1	Justin McLemore	11/20	O-9	1	910-320-1947	Haywood County HQ	
DIVS	Joshua Mohler	11/25	O-15	1	360-515-1523	Macon County HQ	
TFLD	David Westscott	11/25	O-6	1	360-708-6385	Macon County HQ	
ICT4 6-21	Blake Arnold	11/21	O-75	1	910-705-5058	Swain County HQ	
DIVS	Thomas Hoerner	11/25	O-13	1	509-859-6779	Swain County HQ	
TFLD	Anthony Dobson	11/25	O-7	1	509-310-3229	Swain County HQ	
ENG6 National Wildland Fire	Brian Ennis	11/26	E-4	3	970-779-0819	Swain County HQ	
ICT3	Gene Phillips	11/25	O-18	1	360-319-6670	D-9 HQ	
TFLD	Jason Wickizer	11/26	O-22	1	712-579-8781	D-9 HQ	
HEQB 7-01	Jared Tardiff	12/01	O-93	1	252-337-4352	D-9 HQ	
ENG6 CTS – 1526	Christopher Connors	11/27	E-2	3	806-235-3151	D-9 HQ	
SMOD Thunder Mountain UT	Janik Sundberg	11/25	O-19	12	385-277-2126	D-9 HQ	
7. Control Operations Assist with Initial Attack of new starts and mop up existing fires within the District 9.							
8. Special Instructions							
9. Division/Group Communication Summary							
Function	Frequency	System	Channel	Function	Frequency	System	Channel
Command		NCFS		Logistics		NCFS	
Tactical Div/Group		NCFS		Air to Ground		NCFS	
Prepared By (Resource Unit Leader) Austin Harriett		Approved By (Planning Sect. Ch.) Dennis Register		Date 11/18/23		Time 1900	

DIVISION ASSIGNMENT LIST			1. BRANCH		2. Division/Group District 10		
3. Incident Name 2023 R3 Fall IA Support and FY24 NCFS Incident Support			4. Operational Period Date: 11/19/23 Time: 0700-1900				
5. Operations Personnel							
Operations Chief		District Forester			Nancy Blackwood		
Branch Director							
6. Resources Assigned This Period							
Strike Team/Task Force/ Resource Designator	Leader	Last Shift	Resource #	Number Persons	Phone #	Reporting Location	
TFLD	Leo Williamson	11/26	O-24	1	541-207-6038	312 Mark Rd. Fire	
ENG6 DKZ643	Jonas Redstar	11/27	E-15	3	406-833-0205	312 Mark Rd. Fire	
ENG6 DKZ642	Joseph Wetzel	11/27	E-17	3	406-207-9077	312 Mark Rd. Fire	
ENG6 DKZ644	Eugene Weasel	11/27	E-18	3	406-880-3980	312 Mark Rd. Fire	
SMOD Olympia MOD	Mike Burri	11/28	O-3	10	509-899-5136	Surry County HQ	
7. Control Operations Assist with Initial Attack of new starts and mop up existing fires within District 10.							
8. Special Instructions							
9. Division/Group Communication Summary							
Function	Frequency	System	Channel	Function	Frequency	System	Channel
Command		NCFS		Logistics		NCFS	
Tactical Div/Group		NCFS		Air to Ground		NCFS	
Prepared By (Resource Unit Leader) Austin Harriett		Approved By (Planning Sect. Ch.) Dennis Register		Date 11/18/23		Time 1900	

DIVISION ASSIGNMENT LIST				1. BRANCH		2. Division/Group District 12	
3. Incident Name 2023 R3 Fall IA Support and FY24 NCFS Incident Support				4. Operational Period Date: 11/19/23 Time: 0700-1900			
5. Operations Personnel							
Operations Chief				District Forester		Matt Barker	
Branch Director							
6. Resources Assigned This Period							
Strike Team/Task Force/ Resource Designator	Leader	Last Shift	Resource #	Number Persons	Phone #	Reporting Location	
ICT4(t) 4-61	Jeremy Holley	11/30	O-96	1	252-560-8299	Gaston Co HQ	
ICT4(t) 13-50	Michael Ward	11/30	O-97	1	252-741-0033	Rutherford Co HQ	
7. Control Operations Assist with Initial Attack of new starts and mop up existing fires within District 12.							
8. Special Instructions							
9. Division/Group Communication Summary							
Function	Frequency	System	Channel	Function	Frequency	System	Channel
Command		NCFS		Logistics		NCFS	
Tactical Div/Group		NCFS		Air to Ground		NCFS	
Prepared By (Resource Unit Leader) Austin Harriett		Approved By (Planning Sect. Ch.) Dennis Register		Date 11/18/23		Time 1900	

DIVISION ASSIGNMENT LIST				1. BRANCH		2. Division/Group Staging Support Group	
3. Incident Name 2023 R3 Fall IA Support and FY24 NCFS Incident Support				4. Operational Period Date:11/19/23 Time: 0700-1900			
5. Operations Personnel							
Operations Chief				Director		Ken Burns	
Branch Director							
6. Resources Assigned This Period							
Strike Team/Task Force/ Resource Designator	Leader	Last Shift	Resource #	Number Persons	EMT	Phone #	Reporting Location
DIVS	Hagen Blake	11/19	O-38	1		910-641-1441	Bridge
DIVS(t)	Jason Odom	11/24	O-88	1		252-287-5142	Bridge
TFLD	Lannie Pedersen	11/28	O-9	1		360-742-6567	Bridge
TFLD	David Rooks	11/19	O-24	1		910-471-2118	Bridge
ENG6 11-71	R. Brown / A. Kittle	11/19	E-30	2		336-504-4297	Bridge
ENG6 10-76	M. Thomas/ T. Mathis	11/19	E-31	2		336-247-3669	Bridge
ENG6 3-30	B. Szilvay / E. Prevost	11/19	E-32	2		919-548-5828	Bridge
ENG6 3-41	Z. Prevette / M. Harkins	11/19	E-33	2		919-356-9487	Bridge
TFLD	Jana Peterson	11/25	O-20	1		541-207-6095	Bridge
ENG6 WL741	Dustin Brown	11/26	E-3	2		307-256-9061	Bridge
ENG6 General Contractor	Tom Adams	11/26	E-10	2	EMT	602-397-3855	Bridge
SMOD Black Hats	Quentin Cordell	11/26	O-4	10	2 EMT's	605-891-0605	Bridge
7. Control Operations Respond with BRIDGE as needed. Assist with Initial attack of new starts as needed.							
8. Special Instructions							
9. Division/Group Communication Summary							
Function	Frequency	System	Channel	Function	Frequency	System	Channel
Command		NCFS		Logistics		NCFS	
Tactical Div/Group		NCFS		Air to Ground		NCFS	
Prepared By (Resource Unit Leader) Austin Harriett		Approved By (Planning Sect. Ch.) Dennis Register			Date 11/18/23		Time 1900

Ordering, Check-in, Demob, and Finance Procedures

- **Resources that were ordered through the FY24 NCFS Incident Support:**
 - **Will check-in with the Harvell IMTC at the Justice Academy**
 - **Will demob with the Harvell IMTC at the Justice Academy**

- Districts will call Region 3 and ask for Severity Ordering to place all resource and supply orders.
 - Severity ORDM will generate Request Number and will submit through expanded/R3 to go up to CO

- Assigned resources will travel to the District that ordered them.

- Upon arrival, resources ordered through **R3 Fall IA Support** will complete the following:
 - NC-211 NCFS Check-in Sheet and email, along with Resource Orders to ncfs.imt.plans@ncagr.gov
 - District Mechanics and/or FFEs will perform an equipment inspection on all equipment on the OF-296 Inspection form and email a copy to frankie.britt@ncagr.gov
 - **Out-of-State resources will check-in at the Justice Academy.**

- All resources being released from a fire will need to be submitted to R3 Ops for reassignment/area of staging.
 - District Ops should update Severity Resources daily by emailing ncfs.imt.plans@ncagr.gov daily by 1000 hours.

- **LODGING**
 - District Office will arrange lodging as needed for resources.
 - District Office Manager will add information to lodging tracking spreadsheet daily.
 - Rooms will be paid for by Buying Team.
 - Resources will CHECK OUT from the hotel when they leave but are not responsible for invoices.

- **SUPPLIES**
 - Severity ORDM will generate S# for supplies and submit to Buying Team for fulfillment.
 - Supply orders will be filled by a local BUYM who is assigned to the Buying Team.
 - BUYM will deliver all documentation related to purchases to the Buying Team.

- Finance
 - Submit CTRs and Shift Tickets Daily
 - Prior to demob, resource will be sent a draft 286/288 for review and approval.
 - Once approved by resource, final 286/288 will be emailed for completion.
 - Finance will email resource completed packet.
 - See attached document for daily procedures.
 - Paid-out costs will be submitted daily to CO-Ops by IMT Finance

- Resources that are preparing to demob from the District or a large fire (including out-of-state resources) should notify Demob Unit Leader Lisa Hartrick and Finance 3 days prior to their scheduled demob date.
 - 1st working day is the day following travel to the incident/assigned district, regardless of distance traveled.
 - Unless an extension is granted through the proper channels, resources will have a 14-day assignment.
 - Resources will be required to RON on their last working day and travel home the next day, unless their home is within 2-hours driving time from assigned District Office.
 - The Demob Unit Leader will email the resource the ICS 221, Demobilization Check out form.
 - A District representative will sign off on Facilities, Ground Support, and Supply; indicating that they have checked out of hotels, had their equipment inspected, and returned any supplies issued by the District.
 - A District representative will indicate an ETD from the District and an ETA to their home unit.
 - **Out-of-State resources will travel to the Justice Academy to demob.**
 - The following documents will be emailed to ncfs.imt.plans@ncagr.gov
 - ICS 221, Demobilization Check out form
 - A copy of the evaluation for the resource
 - The following documents will be emailed to ncfs.imt.finance@ncagr.gov
 - All remaining CTRs and Equipment Shift Tickets
 - Completed Equipment inspection forms, OF-296
 - Finance will email the resource their final documentation package.

Finance Information for Districts and Resources

Submit CTRs and Shift Tickets **DAILY**

Paper copies can be left at the district office to be picked up by a team member or emailed to:

ncfs.imt.finance@ncagr.gov

- Include the **Fire Name** and **District** you are assigned to in the remarks section of all CTRs and STs.
- Include dollar amount of fuel purchased in **Box 14 Remarks** on the shift ticket.
- Please show travel time on your documents and include **TRAVEL** in remarks. You only have travel on your first and last day.
- Legibly complete your CTRs and Equipment Shift Tickets using the examples below.
- Make sure you use your legal name (not a nickname) on ALL documentation.
- Only one day per CTR/Equipment Shift Ticket.
- **Make sure your incident supervisor signs your tickets before submitting them to finance.**

2023 R-3 Fall IA Support, NC-NCS-230037 Examples

CREW TIME REPORT					
(1) CREW NAME			(2) CREW NUMBER		
NCFS			O-25		
(3) OFFICE RESPONSIBLE FOR FIRE		(4) FIRE NAME		(5) FIRE NUMBER	
NCFS		2023 R-3 FALL IA Support		NC-NCS-230037	
(6) RE-MARKS NO.	(7) NAME OF EMPLOYEE	(8) CLASSIFICATION	(9) DATE		(10) DATE
			Military Time	Military Time	
T	Chester VonWiggins	DIVS	ON	OFF	ON
			OFF	OFF	
			0700	1130	
			1200	1900	
(11) REMARKS					
T = Travel					
Fire Name					
District you are working in					
(12) OFFICER-IN-CHARGE (Signature)			(13) TITLE (Officer-in-Charge)		
Bridgit Gallagher			FSCC(T)		
(14) NAME (Person Posting to Emergency Time Report)					(15) DATE

EMERGENCY EQUIPMENT SHIFT TICKET						E-25	
NOTE: The responsible Government Officer will update this form each day or shift and make initial and final equipment inspections.							
1. AGREEMENT NUMBER			2. CONTRACTOR (name)				
3. INCIDENT OR PROJECT NAME			4. INCIDENT NUMBER		5. OPERATOR (name)		
2023 R-3 Fall IA Support			NC-NCS-230037		VonWiggins, Chester		
6. EQUIPMENT MAKE			7. EQUIPMENT MODEL		8. OPERATOR FURNISHED BY		
Ford			F-150		<input checked="" type="checkbox"/> CONTRACTOR <input type="checkbox"/> GOVERNMENT		
9. SERIAL NUMBER			10. LICENSE NUMBER		11. OPERATING SUPPLIES FURNISHED BY		
last 5 of VIN #			PP-1234		<input checked="" type="checkbox"/> CONTRACTOR (wet) <input type="checkbox"/> GOVERNMENT (dry)		
12. DATE		13. EQUIPMENT USE				14. REMARKS (released, down time and cause, problems, etc.)	
MO/DAY/YR	START	STOP	HOURS/DAYS/MILES(circle one)		T=Travel		
			WORK	SPECIAL	Rate=\$32.00		
11/10/23	0800	1200	4	T	Fire Name		
11/10/23	1200	1230	.50		District you are working in		
11/10/23	2000	2030	.50		15. EQUIPMENT STATUS		
					<input type="checkbox"/> a. Inspected and under agreement		
					<input type="checkbox"/> b. Released by Government		
					<input type="checkbox"/> c. Withdrawn by Contractor		
16. INVOICE POSTED BY (Recorder's initials)							
17. CONTRACTOR'S OR AUTHORIZED AGENT'S SIGNATURE			18. GOVERNMENT OFFICER'S SIGNATURE		19. DATE SIGNED		
Chester VonWiggins			Bridgit Gallagher		11/11/23		
NSN 7540-01-119-562850297-102						OPTIONAL FORM 297 (Rev. 7-90) USDA/USDI	

2024 NCFS Incident Support, NC-NCS-230041 Examples (All Out-of-State Resources only)

CREW TIME REPORT					
(1) CREW NAME			(2) CREW NUMBER		
NCFS			O-25		
(3) OFFICE RESPONSIBLE FOR FIRE		(4) FIRE NAME		(5) FIRE NUMBER	
NCFS		2024 NCFS Large Inc Supp		NC-NCS-230041	
(6) RE-MARKS NO.	(7) NAME OF EMPLOYEE	(8) CLASSIFICATION	(9) DATE		(10) DATE
			Military Time	Military Time	
T	Chester VonWiggins	DIVS	ON	OFF	ON
			OFF	OFF	
			0700	1130	
			1200	1900	
(11) REMARKS					
T = Travel					
Fire Name					
District you are working in					
(12) OFFICER-IN-CHARGE (Signature)			(13) TITLE (Officer-in-Charge)		
Bridgit Gallagher			FSCC(T)		
(14) NAME (Person Posting to Emergency Time Report)					(15) DATE

EMERGENCY EQUIPMENT SHIFT TICKET						E-25	
NOTE: The responsible Government Officer will update this form each day or shift and make initial and final equipment inspections.							
1. AGREEMENT NUMBER			2. CONTRACTOR (name)				
3. INCIDENT OR PROJECT NAME			4. INCIDENT NUMBER		5. OPERATOR (name)		
2024 NCFS Large Incident Support			NC-NCS-230041		VonWiggins, Chester		
6. EQUIPMENT MAKE			7. EQUIPMENT MODEL		8. OPERATOR FURNISHED BY		
Ford			F-150		<input checked="" type="checkbox"/> CONTRACTOR <input type="checkbox"/> GOVERNMENT		
9. SERIAL NUMBER			10. LICENSE NUMBER		11. OPERATING SUPPLIES FURNISHED BY		
last 5 of VIN #			PP-1234		<input checked="" type="checkbox"/> CONTRACTOR (wet) <input type="checkbox"/> GOVERNMENT (dry)		
12. DATE		13. EQUIPMENT USE				14. REMARKS (released, down time and cause, problems, etc.)	
MO/DAY/YR	START	STOP	HOURS/DAYS/MILES(circle one)		T=Travel		
			WORK	SPECIAL	Rate=\$32.00		
11/10/23	0800	1200	4	T	Fire Name		
11/10/23	1200	1230	.50		District you are working in		
11/10/23	2000	2030	.50		15. EQUIPMENT STATUS		
					<input type="checkbox"/> a. Inspected and under agreement		
					<input type="checkbox"/> b. Released by Government		
					<input type="checkbox"/> c. Withdrawn by Contractor		
16. INVOICE POSTED BY (Recorder's initials)							
17. CONTRACTOR'S OR AUTHORIZED AGENT'S SIGNATURE			18. GOVERNMENT OFFICER'S SIGNATURE		19. DATE SIGNED		
Chester VonWiggins			Bridgit Gallagher		11/11/23		
NSN 7540-01-119-562850297-102						OPTIONAL FORM 297 (Rev. 7-90) USDA/USDI	

*Resource is responsible for turning in all documentation to finance

**Any finance questions can be emailed to ncfs.imt.finance@ncagr.gov

(NC-211A, 9/21/2023) **NCFS Incident Check-In-Sheet**

Incident Name: _____

Instructions Section 1: Single Resources, Crew Boss, Strike Team Leaders, & Task Force Leaders fill in blanks and appropriate check boxes. Place Crews, Strike Teams, or Task Force personnel and equipment on back manifest only.

Incident #: _____

Request #: _____ Contracted Resource? Yes No AD

Assignment (Kind/Position): _____ Trainee: Y N
Task Book: Y N

Name (Last, First): _____

Trainee: Y N

Name of Crew/ST/TF: _____

Task Book: Y N

Agency Name: _____

Trainee: Y N

Resource Type: Single Resource Strike Team Task Force Total # of Personnel: _____

Task Book: Y N

Check-in Date: _____ Check-in Time: _____

Trainee: Y N

Unit ID: _____ Call Sign: _____

Task Book: Y N

Demob NCFS Unit: _____

(Region, District, County)

Mobilization Date: _____

Demob City: _____ Demob State: _____

Last Day Off: _____

Jetport (if flying): Departure: _____ Arrival: _____

DOB: _____

Cell Phone Number: _____

Travel Method: Air/Rental Air AOV Bus Passenger POV

Pager Number: _____

Rental Company: _____ Make/Model/Yr: _____ Tag#/St: _____

Emergency Contact Name: _____

Home Address: _____

Emergency Contact Phone: _____

City St Zip

For Plans Use Only:	Posted	T-Card	Red Card
---------------------	--------	--------	----------

Instructions Section 2: Provide Call Sign, Tag # and/or Serial # for all applicable equipment

VEHICLE (Transportation)	CALL SIGN/TAG#	Check one	TPL-TRACTOR PLOW	DZR-DOZER	CALL SIGN
AUTO-Car/Sedan	_____	Type 1 (Komatsu DP65, TD-15C, TD-15E, TD-15F)	_____	_____	_____
PUP1-Pickup Type 1 (ex. F-350)	_____	Type 2 (D6D, 1450 Case, Fiat 10, D5H, TD-12, TD-12XP, JD750C)	_____	_____	_____
PUP2-Pickup Type 2 (ex. F-250)	_____	Type 3 (1150 Case B, 1150 Case E, JD700)	_____	_____	_____
PUP3-Pickup Type 3 (ex. F-150)	_____	Type 4 (TD-9, D4H, D5C, Fiat 8, JD650, Leibher 711, 850 Case)	_____	_____	_____
RADV-Radio Engineer Vehicle	_____	Type 5 (TD-8, JD450)	_____	_____	_____
SUVL-Sport Utility Vehicle	_____	Type 6 (TD-6, JD350, D-3)	_____	_____	_____
VANP-Passenger Van	_____	HEAVY EQUIPMENT	CALL SIGN/TAG#	PUMPS - MBLP	SERIAL#
VATV-All Terrain Vehicle	_____	BHOE-Backhoe	_____	Portable (Mark III)	_____
VUTV-Utility Terrain Vehicle	_____	EXCA-Excavator, Type Any	_____	4"-6" Discharge	_____
TRUCKS	CALL SIGN/TAG#	FORK-Forklift (_____ lb)	_____	Volume Lift	_____
LOWB-Lowboy/Hauling Unit	_____	FTRA-Farm Tractor (_____ hp)	_____	Volume Lift + Farm Tractor	_____
STK-Stakeside, Type Any	_____	GRD-Road Grader	_____	AIRCRAFT	NCFS#/TAIL#
STML-Mechanic Truck, Light (F-350)	_____	LDFR-Front End Loader	_____	AOSU-Air Ops Cmd. Trailer	_____
STMH-Mechanic Truck, Heavy (F-450)	_____	TDMP-Dump Truck	_____	ATS3-SEAT (AT802F)	_____
VBOX-Box Truck, (_____ Duty)	_____	MISC EQUIP	CALL SIGN/TAG#/SERIAL#	FWAA-Cessna 182	_____
ENGINE - ENG	CALL SIGN/TAG#	CS-Chainsaw	_____	FWAA-Cessna 185	_____
Type 1-1000+ GPM (300+ gal)	_____	EBAM-E-BAM	_____	FWAA-Cessna 206	_____
Type 2-500+ GPM (300+ gal)	_____	FT-Fuel Tender	_____	FWCA-Kodiak 100	_____
Type 3-150 GPM (500-1500 gal)	_____	GENR-Generator (_____ KW)	_____	FWLP-T-34 Lead Plane	_____
Type 4-50 GPM (750-1500 gal)	_____	OFFT-Mobile Office (_____ ft)	_____	HEL2-UH-1H IA	_____
Type 5-50 GPM (400-749 gal)	_____	PTBD-Portal Bridge/Bridge Truck	_____	HEL4-UH-1H+ IA	_____
Type 6-50 GPM (150-399 gal)	_____	RAWP-Mobile RAWS	_____	HEL3-AS350-B3 Trans IA	_____
Type 7-10 GPM (50-200 gal)	_____	RGTR-Rain Gun Trailer	_____	HOSU-Helio Ops Support Unit	_____
TRACK VEHICLES	CALL SIGN/SERIAL#	TBOT-Boat	_____	MRBM-Mobile Retardant Base	_____
SKDS-Fire Track	_____	TRAT-Tractor/Trailer	_____	UAR2-Unmanned Rotor Wing Type 2	_____
SKGS-Nodwell/Flex Track/Softtrack	_____	TRLR-Trailer	_____	UAR4-Unmanned Rotor Wing Type 4	_____
WATERTENDER	CALL SIGN/TAG#	OTHER EQUIP	UNIT ID	OTHER EQUIP	UNIT ID
WAT-Water Tender, All Sizes	_____	_____	_____	_____	_____

(NC-211A, 9/21/2023) **NCFS Incident Manifest Sheet**

Instructions: Crews, Strike Teams, Task Force, or Groups fill in blanks. Reference equipment types on Check-in Sheet (NC-211A) to complete manifest.

Request #: _____

Incident Name: _____

Unit Name: _____

Leaders Name: _____

PERSONNEL

#	Name (Last, First)	Position Code	Call Sign	Home Unit	Home City	Last Day Off
1						
2						
3						
4						
5						
6						
7						
8						
9						
10						
11						
12						
13						
14						
15						
16						
17						
18						
19						
20						

EQUIPMENT

#	Kind Code	Equipment Description (Call Sign & Make/Model)	Tag #, Tail # or Serial #	Operator's Name (Last, First)
1				
2				
3				
4				
5				
6				
7				
8				
9				
10				
11				
12				
13				
14				
15				
16				
17				
18				
19				
20				

R3 Fall IA Support and FY24 NCFS Large Incident Support Phone Roster

NAME	POSITION	PHONE NUMBERS	ALTERNATE PHONE
COMMAND & GENERAL STAFF			
Kevin Harvell	IC	919-548-4190	
Greg Riggs	SOFC	252-229-0162	
Chad Brandon	SOFC(t)	252-567-0823	
Rob Davis	SOF(t)	252-548-4730	
Jason Guidry	LOFR	828-273-0982	
James Kimes	LOFR	919-218-7736	
Carrie McCullen	PIOC	910-874-2629	
Phillip Jackson	PIOT	919-641-4973	
AGENCY REPS			
Washington Agency Rep.	Todd Welker	360-918-3777	
Washington Agency Rep.	Russ Lane	360-480-9657	
Oregon Agency Rep.	Blake Ellis	503-910-2353	
NCFS	Michael Cheek	828-231-2691	
OPERATIONS			
David LaFon	OSC	252-312-4367	
Dwayne Vigil(t)	OSC	828-593-9282	
Brian Rogers(t)	OSC	828-450-5209	
Trent Duncan	District 1 Forester	828-667-5211	
Duane Truslow	District 2 Forester	828-757-5611	
Ruthie Edwards	District 9 Forester	828-586-4007	
Nancy Blackwood	District 10 Forester	336-956-2111	
Matt Barker	District 12 Forester	704-827-7576	
Ken Burns	Staging Support	828-443-0398	
John Cook	ICT3	252-542-0119	
Jonathan Ross	THSP	704-695-4294	
Kit Gibbs	UAS Pilot	252-721-8184	
FINANCE			
Ron Meyers	FSC	919-902-1842	
Bridgit Gallagher(t)	FSCC(t)/COST	828-243-5950	
Renee Strickland	TIME	919-868-6327	
Jeana McDuffie	EQTR/PTRC	910-770-2453	
Kristi Wilson	PTRC(t)	910-206-1047	
PLANNING			
Dennis Register	PSCC	252-229-0165	
Austin Harriett	RESL	252-229-0810	
Richard Cockerham	SILT	704-616-0747	
Robin Roberson	DOCL	919-636-0737	
John Willis	SCKN(t)	704-910-9063	
Lisa Hartrick	DMOB	910-874-0905	
LOGISTICS			
Jamie Logan	LSCC	828-399-1141	
Patrick Raynor	ORDM	336-239-2377	
Derek Arney	FACL	828-413-0457	
Frankie Britt	GSUL	910-234-1311	
Jimmy Meadows	COML	252-229-7307	
Bruce Scott	COMT	828-545-9209	
Jacob Wheeler	RADO	910-985-0303	
Wayne Pugh	EQPM	252-945-3199	
Jason Wade	ORDM(t)	910-309-8654	
Travis Ruff	ORDM	828-443-1303	
Clyde Leggins	FDUL	828-334-2340	
Stewart Niemyer	MEDL	910-434-3258	
Chris Williams	GMEC	910-501-7759	

81°26'W

81°25.5'W

81°25'W

36°6.5'N

36°6.5'N

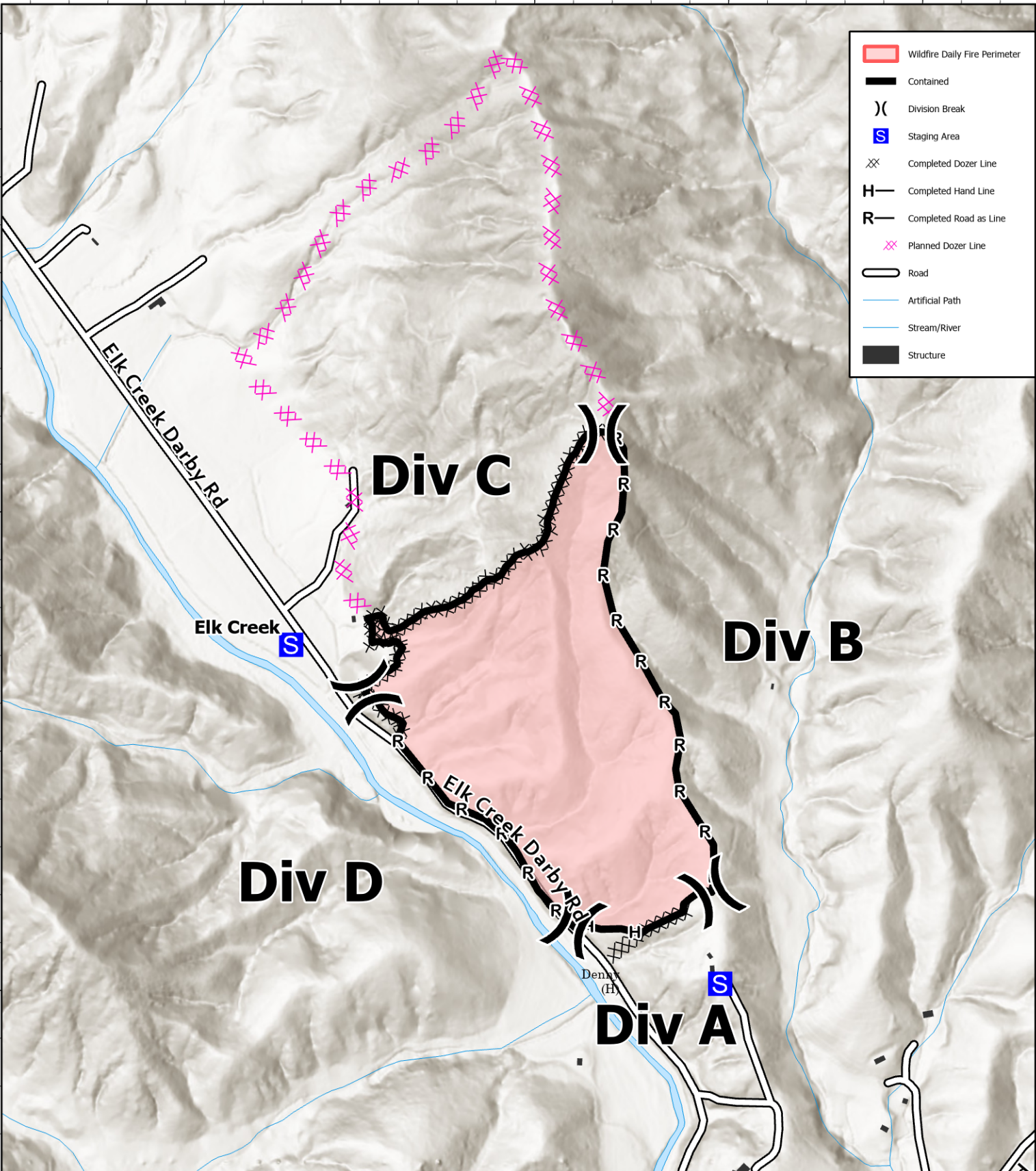
36°6'N

36°6'N

36°5.5'N

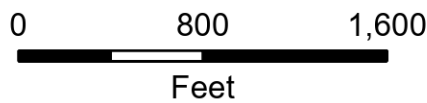
36°5.5'N

	Wildfire Daily Fire Perimeter
	Contained
	Division Break
	Staging Area
	Completed Dozer Line
	Completed Hand Line
	Completed Road as Line
	Planned Dozer Line
	Road
	Artificial Path
	Stream/River
	Structure



IAP Map

Branch
 NC-NCS-230037
 11/19-11/20/2023 Final
 77 acres at 11/12/2023 1446



NCFS IMT
 11/18/2023 1746
 Acres from GIS and GPS
 North American 1983 Datum

81°26'W

81°25.5'W

81°25'W

IAP, PDF Fire Maps & PIO

**Current NC Wildfire
Situation Report**



Poplar Drive IAP



Poplar Drive Fire Map



Tripplett Fire Map



Elk Creek Fire Map



R3 IA Map



11/19/2023

TENTATIVE RELEASE

2023 R-3 FALL IA SUPPORT US-NC-NCS-230037

CREWS

C-1	0000	(HCM)	HCM D8
C-2	0000	(HCM)	HCM D4 WHEELER

EQUIPMENT

E-35	0000	(PUP1)	PU 8-21 PP-2692
E-37	0000	(PUP1)	PU 8-25 PA-1471
E-38	0000	(PUP1)	PU 7-70 PP-4162
E-39	0000	(PUP1)	PU 4-21 PP-9541
E-40	0000	(PUP1)	PUP1 4-81 PP-4166
E-116	0000	(DOZ4)	DOZ4 TD-9 PO-46251
E-514	0000	(PU)	PU 2-7 PA-5694
E-58	1100	(SUV)	SUV 3-51 PB-2597

OVERHEAD

O-503	0000	(ICT4)	DAVIS , CHARLES 2-7
O-36	1100	(PIOT)	JACKSON, PHILIP 3-51

11/20/2023

TENTATIVE RELEASE

2023 R-3 FALL IA SUPPORT US-NC-NCS-230037

EQUIPMENT

E-29	0000	(PUP1)	PU 8-52 PP-4158
E-30	0000	(ENG6)	ENG6 11-71 PB-5310
E-31	0000	(ENG6)	ENG6 10-76 PP-4160
E-32	0000	(ENG6)	ENG6 3-30 PA-8512
E-33	0000	(ENG6)	ENG6 3-41 PP-2693
E-42	0000	(PU)	PU R2-1 PB-7568
E-44	0000	(PUP3)	PU DUPONT-1 PB-6960
E-45	0000	(PUP3)	PU CLEMMONS-2 PJ-6295
E-49	0000	(PUP3)	PU 4-1 PK-5693
E-50	0000	(PUP3)	PU RAL 2-10 PJ-6245
E-54	0000	(PUP3)	PU 12-6 PB-4904
E-72	0000	(SUV)	SUV RAL-3 JJP-5936
E-73	0000	(SUVL)	SUVL 3-11 FMK-5528
E-74	0000	(PU)	PU 8-8 PJ-6259
E-78	0000	(PU)	PU R-35 PA-7416
E-79	0000	(PUP3)	PU 13-1 PP-9491
E-85	0000	(PUP3)	PU 11-6 PA-5689
E-89	0000	(PUP1)	PU 3-90 PP-7117
E-92	0000	(PUP3)	PU TC-1 PP-2871

OVERHEAD

O-58	0000	(SITL)	COCKERHAM, RICHARD RAL 2-41
O-72	0000	(ICT3)	COOK, JOHN 13-1
O-27	0000	(LOFR)	GUIDRY, JASON DUPONT-1
O-25	0000	(ICCI)	HARVELL, KEVIN R2-1
O-28	0000	(LOFR)	KIMES, JAMES CLEM 2

11/20/2023

TENTATIVE RELEASE

2023 R-3 FALL IA SUPPORT US-NC-NCS-230037

O-76	0000	(PIOC)	MCCULLEN, CARRIE TC-1
O-53	0000	(EQTR)	MCDUFFIE, JEANA 8-8
O-33	0000	(FSC2)	MYERS, RONALD RAL 2-10
O-32	0000	(PSCC)	REGISTER, DENNIS 4-1
O-65	0000	(DOCL)	ROBERSON, ROBIN 11-6
O-24	0000	(STEN)	ROOKS, DAVID 8-52
O-71	0000	(THSP)	ROSS, JONATHAN 3-90
O-51	0000	(TIME)	STRICKLAND, ANGELA (RENEE) RAL 1-
O-57	0000	(SCKN)	WILLIS, JOHN 12-6
O-52	0000	(PTRC)	WILSON, KRISTI 3-11

11/21/2023

TENTATIVE RELEASE

2023 R-3 FALL IA SUPPORT US-NC-NCS-230037

EQUIPMENT

E-9	0000	(ENG6)	ENG6 5-82 PB-2728
E-57	0000	(PU)	PU 5-1 PJ-6401
E-102	0000	(PU)	PU EDN-5421

OVERHEAD

O-35	0000	(SOFC)	BRANDON, CHAD 5-7
O-9	0000	(FFT1)	MCLEMORE, JUSTIN 5-82
O-83	0000	(ORDM)	RUFF, TRAVIS

11/22/2023

TENTATIVE RELEASE

2023 R-3 FALL IA SUPPORT US-NC-NCS-230037

CREWS

C-4	0000	(HCM)	HCM NCWRC BRIDGES
-----	------	-------	-------------------

EQUIPMENT

E-67	0000	(PU)	PU T-1 PA-7183
E-80	0000	(PU)	PU 7-1 PP-9495
E-86	0000	(PU)	PU BL-3 PJ-6206
E-91	0000	(PUP1)	PU 6-21 PB-5314
E-94	0000	(PUP3)	PU 5-75 PK-7740
E-96	0000	(PUP1)	PU 8-61 PP-4159
E-99	0000	(PUP3)	PU 3-13 PJ-6297
E-133	0000	(PUP3)	PU PJ-2949
E-135	0000	(PUP1)	PU PK-8779
E-137	0000	(PUP1)	PU PJ-1504
E-138	0000	(PU)	PU PK-8557
E-139	0000	(PU)	PU PA-4961

OVERHEAD

O-46	0000	(FACL)	ARNEY, DEREK T-1
O-75	0000	(ICT4)	ARNOLD, CHRISTOPHER BLAKE 6-21
O-73	0000	(DZOP)	AYCOCK, AUSTIN 5-75
O-79	0000	(HEQB)	DAVIS, MICHAEL 8-61
O-66	0000	(DMOB)	HARTRICK, LISA BL-3
O-80	0000	(BUYM)	HOWELL, JUSTIN 3-13
O-60	0000	(FOBS)	PETRUNCIO, MICHAEL 7-1

MEDICAL PLAN (ICS 206 WF)

Controlled Unclassified Information//Basic

Medical Incident Report

FOR A NON-EMERGENCY INCIDENT, WORK THROUGH CHAIN OF COMMAND TO REPORT AND TRANSPORT INJURED PERSONNEL AS NECESSARY.

FOR A MEDICAL EMERGENCY: IDENTIFY ON-SCENE INCIDENT COMMANDER BY NAME AND POSITION AND ANNOUNCE "MEDICAL EMERGENCY" TO INITIATE RESPONSE FROM IMT COMMUNICATIONS/DISPATCH.

Use the following items to communicate situation to communications/dispatch.

1. CONTACT COMMUNICATIONS / DISPATCH (Verify correct frequency prior to starting report)

Ex: "Communications, Div. Alpha. Stand-by for Emergency Traffic."

2. INCIDENT STATUS: Provide incident summary (including number of patients) and command structure.

Ex: "Communications, I have a Red priority patient, unconscious, struck by a falling tree. Requesting air ambulance to Forest Road 1 at (Lat./Long.) This will be the Trout Meadow Medical, IC is TFLD Jones. EMT Smith is providing medical care."

Severity of Emergency / Transport Priority	<input type="checkbox"/> RED / PRIORITY 1 Life or limb threatening injury or illness. Evacuation need is IMMEDIATE <i>Ex: Unconscious, difficulty breathing, bleeding severely, 2° – 3° burns more than 4 palm sizes, heat stroke, disoriented.</i> <input type="checkbox"/> YELLOW / PRIORITY 2 Serious Injury or illness. Evacuation may be DELAYED if necessary. <i>Ex: Significant trauma, unable to walk, 2° – 3° burns not more than 1-3 palm sizes.</i> <input type="checkbox"/> GREEN / PRIORITY 3 Minor Injury or illness. Non-Emergency transport <i>Ex: Sprains, strains, minor heat-related illness.</i>	
Nature of Injury or Illness & Mechanism of Injury		<i>Brief Summary of Injury or Illness (Ex: Unconscious, Struck by Falling Tree)</i>
Evacuation Request		<i>Air Ambulance / Short Haul/Hoist Ground Ambulance / Other</i>
Patient Location		<i>Descriptive Location & Lat. / Long. (WGS84)</i>
Incident Name		<i>Geographic Name + Medical (Ex: Trout Meadow Medical)</i>
On-Scene Incident Commander		<i>Name of on-scene IC of Incident within an Incident (Ex: TFLD Jones)</i>
Patient Care		<i>Name of Care Provider (Ex: EMT Smith)</i>

3. INITIAL PATIENT ASSESSMENT: Complete this section for each patient as applicable (start with the most severe patient)

Patient Assessment: See IRPG PAGE 106

Treatment:

4. EVACUATION PLAN:

Evacuation Location (if different): (Descriptive Location (drop point, intersection, etc.) or Lat. / Long.) Patient's ETA to Evacuation Location:

Helispot / Extraction Site Size and Hazards:

5. ADDITIONAL RESOURCES / EQUIPMENT NEEDS:

Example: Paramedic/EMT, crews, immobilization devices, AED, oxygen, trauma bag, IV/fluid(s), splints, rope rescue, wheeled litter, HAZMAT, extrication

6. COMMUNICATIONS: Identify State Air/Ground EMS Frequencies and Hospital Contacts as applicable

Function	Channel Name/Number	Receive (RX)	Tone/NAC *	Transmit (TX)	Tone/NAC *
COMMAND					
AIR-TO-GRND					
TACTICAL					

7. CONTINGENCY: Considerations: If primary options fail, what actions can be implemented in conjunction with primary evacuation method? Be thinking ahead..

8. ADDITIONAL INFORMATION: Updates/Changes, etc.

REMEMBER: Confirm ETAs of resources ordered. Act according to your level of training. Be Alert. Keep Calm. Think Clearly. Act Decisively.

