

SAURATOWN MOUNTAIN FIRE

FY24 R2 Severity
NC-NCS-230048
STOKES COUNTY
District 10

Fiori Time Code: G/T/F 1445

FY24 NCFS INCIDENT SUPPORT
NC-NCS-230041
Financial Code: PN QRN9



November 20-21, 2023

Monday-Tuesday


Operational Period Day 0700-1900 hrs.

Operational Period Night 1900-0700 hrs.



IAP's



INCIDENT OBJECTIVES	1. INCIDENT NAME	2. DATE PREPARED	3. TIME PREPARED
	Sauratown Mountain Fire	11/19/23	1800
4. OPERATIONAL PERIOD (DATE/TIME) November 20-21, 2023 Day 0700-1900 / Night 1900-0700			
5. GENERAL CONTROL OBJECTIVES FOR THE INCIDENT (INCLUDE ALTERNATIVES)			
<ol style="list-style-type: none"> 1. Provide for safety of our firefighters, assigned resources and the public. Emphasize risk assessments, hazard mitigation, information dissemination and adequate work rest ratios through morning briefings and operational assignments. 2. Assist North Carolina Forest Service Region 2 and 3 in planning, resource tracking, and financial tracking of the 2023 R3 Fall IA Support, FY 24 R2 Severity and FY 24 NCFS Incident Support resources. 3. Manage fires in cost effective manner. Maintain accurate cost estimates of the incident and provide daily updates through morning reports and afternoon situation reports. 4. All incident personnel will be treated with dignity and respect. We exhibit care, concern, and consideration for others. This incident has zero tolerance for harassment, alcohol or drug use. 			
6. WEATHER FORECAST FOR OPERATIONAL PERIOD See attached forecast.			
7. GENERAL SAFETY MESSAGE <u>HYDRATION/HEAT STRESS</u>- drink often and drink a lot, before you get thirsty. 4:1 water to sports drinks.			
8. ATTACHMENTS (✓ IF ATTACHED)			
<input checked="" type="checkbox"/> ORGANIZATION LIST (ICS 203) <input checked="" type="checkbox"/> MEDICAL PLAN (ICS 206) <input checked="" type="checkbox"/> SAFETY MESSAGE <input checked="" type="checkbox"/> ASSIGNMENT LIST (ICS 204) <input checked="" type="checkbox"/> INCIDENT MAP <input checked="" type="checkbox"/> PHONE LIST <input checked="" type="checkbox"/> COMMUNICATIONS PLAN (ICS 205) <input type="checkbox"/> TRAVEL MAP <input type="checkbox"/>			
9. PREPARED BY (RESOURCE UNIT LEADER) Austin Harriett		10. APPROVED BY (INCIDENT COMMANDER) Tommy Sports 	

ORGANIZATION ASSIGNMENT LIST		9. Operations Section	
1. Incident Name Sauratown Mountain Fire		Ops Day	Planning Keith Money
		OPS Day	Field David Poole
		Ops Night	
		a. Branch I - Day	
2. Date 11/19/23	3. Time 1700	Branch Director	
4. Operational Period: November 20-21, 2023 Day 0700-1900 Night 1900-0700		Division/Group	A (Youth Camp) Jeb Schumacher
		Division/Group	B (Structure Protection) Michael Huffman
		Division/Group	Charlie (YMCA Camp) Hagen Blake
5. Command and General Staff		Division/Group	
Incident Commanders	Walter Escobar Jonatha Ambrose(t)	Division/Group	
Deputy IC		Division/Group	
Safety Officers	Donald Meadows (Day) Chad Brandon(t) (Night)	b. Branch II - Night	
Information Officer	Jimmy Holt	Branch Director	
THSP Liaison Officer	Sam Griffith	Division/Group	Structure Protection Joshua Mohler Thomas Hoerner
		Division/Group	
6. Agency Representatives		Division/Group	
Agency	Name	Division/Group	
NCFS	Michael Cheek	Division/Group	
WADNR	Todd Welker	c. Branch III	
WADNR	Russ Lane	Branch Director	
ODF	Blake Ellis	Division/Group	
7. Planning Section		Division/Group	
Chief	Brian Yeich	Division/Group	
Deputy		Division/Group	
Resources Unit	Austin Harriett	d. Branch IV	
Situation Unit	Chris Sharpton	Branch Director	
Documentation		Division/Group	
Demobilization Unit	Lisa Hartrick	Division/Group	
Fire Behavior Analyst		Division/Group	
Field Observers		Division/Group	
GIS	Matthew Haunsperger (virtual) / Dakota Paris	Division/Group	
Status Check-in		Division/Group	
		e. Other Groups	
8. Logistics Section		UAS Group	
Chief	Jamie Logan	f. Air Operations Branch	
Deputy		THSP / Air OPS	Jonathan Ross
Supply Unit	Patrick Raynor	UAS Pilot	
Facilities Unit	Derek Arney / Carla Ross	Air Support Supervisor	
Ground Support Unit	Frankie Britt	Helicopter Coordinator	
Communications Unit	Jimmy Meadows Jr.	Air Tanker Coordinator	
Communication Tech	Bruce Scott	Helibase Managers	
Radio Operator		10. Finance Section	
Equipment Manager	Wayne Pugh	Chief	Ron Meyers / Bridgit Gallagher(t)
Ordering Manager	James Moeller	Deputy	
Food Unit	Clyde Leggins	Time Unit	
Medical Unit	Stewart Niemyer	Time Unit	
Receiving & Dist		Cost Unit	SueAnn Safriet
Security Unit		Equipment Time Recorder	Susan Fay
Mechanics	Chris Williams	Personel Time Recorder	Pam Alston
Driver		Compensation / Claims Unit	
		Prepared by (Resource Unit Leader) Austin Harriett	



Sauratown Mountain Weather Forecast



FORECAST NO: 01
PREDICTION FOR: Monday 0600 – Thursday 0600
SHIFT DATES: November 20-22, 2023
FORECAST ISSUED: 1900 November 19, 2023

NAME OF FIRE: Sauratown Mountain
UNIT: NCFS
SIGNED: Incident Meteorologist
 Terry Lebo

Discussion

High pressure will build in from the north today, increasing northeast winds. Low level dry air will linger in the region with minimum humidity dropping near 30%. Moisture increases Monday night ahead of low pressure that will pass well west of the area. Periods of heavy rain are possible Tuesday and Tuesday night. Gusty northwest winds develop Wednesday in the wake of a cold front, but humidity will remain elevated.

MONDAY:

WEATHER: Partly to mostly cloudy in the morning becoming cloudy.

MAX TEMP: Valleys: 53-58°F **MIN RH: Valleys:** 30-40%
Ridgetops: 50-55°F **Ridgetops:** 35-45%

CHC WTG RAIN (0.10"): 0% **LAL: 1**

WINDS (20FT): Valley: Light downslope becoming upslope late morning. On east and northeast aspects upslope increasing to 3-5 mph with gusts 8 mph in the afternoon.

Ridgetops: From the northeast 4-8 mph with gusts around 15 mph in the afternoon. A brief period of northeast winds with gusts 15-20 mph is possible mid to late morning.

MIXING HEIGHT: Rising to 3,000 ft around 1300.

TRANSPORT WIND: East-northeast 12 mph.

INVERSION BREAK (Temp/Time): 48F/1100

MONDAY NIGHT:

WEATHER: Cloudy with light rain developing around daybreak.

MIN TEMP: Valleys: 39-44° **MAX RH: Valleys:** 90-100%
Ridgetops: 41-46° **Ridgetops:** 70-90%

CHC WTG RAIN: 0% **LAL: 1**

WINDS (20FT): Valleys: Southeast 2-4 mph becoming light downslope around 1900

Ridgetops: From the northeast 7-10 mph with gusts 14-18 mph.

MIXING HEIGHT: No inversion.

Extended Outlook

TUESDAY: Cloudy with rain, heavy at times. Highs 45-52F. Lows 40-45F. Min RH: 80-90%. Max RH: 90-100%. Winds: east-northeast 10 mph with gusts 15-20 mph becoming southeast in the afternoon. Total rainfall 0.50"-1.00" with locally higher amounts.

WEDNESDAY: Scattered morning clouds, clearing in the afternoon. Highs 46-56F. Lows 28-40F. Min RH: 40-50%. Max RH: 70-90%. Winds: northwest 15 with gusts 20-30 mph.

HEALTH AND SAFETY MESSAGE

SAFETY starts with ***YOU***

We are **ALL** accountable for **SAFE** behaviors

INCIDENT: Sauratown Mountain Fire

DATE/SHIFT: November 20, 2023

Major Hazards and Risks: Driving, Steep/Rocky Terrain, Snags, Fire Behavior

Driving: Driving will continue to be one of the most dangerous tasks that fire fighters do on a routine basis. Be alert for other drivers when driving to and from the line. Always burn your headlights for added visibility but avoid high-beaming oncoming traffic when driving at night. Remember, Daylight Savings Time is over, and you may be coming off shift after dark. Expect heavy traffic and delays on the roadways due to the upcoming Thanksgiving Holiday. **DO NOT TEXT WHILE DRIVING!** Drive defensively and use passengers as lookouts and spotters while backing.

Steep Rocky Terrain: Many fires will have a lot of steep and rocky terrain. Make sure you have a good firm footing when walking if in a steep area. Rocks and logs will become slippery when wet. Be deliberate when walking. Avoid stepping on wet rocks and logs. Look out for rolling debris from upslope and call out rolling debris to those who are below. Use Downhill Line Construction Checklist in IRPG (pg. 7) if constructing line downhill.

Increasing Fire Behavior: Fire behavior has been increasing in the past two days. Be aware of this. Ensure that LCES is in place and practiced. Lookouts should communicate any changes in fire behavior immediately. Be aware of a planned shift in the wind direction and plan accordingly.

Watch out Situations:

- Unfamiliar with weather and local factors influencing fire behavior.
- Weather becoming hotter and dryer.
- Wind increases or changes in direction.

Ensure that Escape Routes and Safety Zones are identified. Communicate them to everyone on the line. Also, flag escape routes if they are different from the fire line.

Snags: Maintain situational awareness and point out snags to others. Be aware of dead snags within past fire area. **DO NOT** cut hemlock snags (tops will break). Do not park vehicles under snags or trees with widow makers. Use flagging tape to keep others out of the area. **LOOK UP, DOWN, AND AROUND!**

Remember... Two common denominators of tragedy fires are fires that respond to topographic conditions and run uphill and fires that are relatively small or deceptively quite.

Be Alert. Keep Calm. Think clearly. Act decisively.

Incident Safety Officers:

Greg Riggs (SOFC), Chad Brandon (SOFC-T)





Steven W. Troxler
Commissioner

**North Carolina Department of Agriculture
and Consumer Services**
N.C. Forest Service



Gregory M. Hicks
Assistant Commissioner

**R2 Fall IA Support
Sauratown Mountain Fire
Emergency Medical Procedure**

- Begin patient care and establish an IWI IC
- Call by phone 911 or central communication by county radio if on scene with local NCFS county personnel.
- After arranging patient care and transport begin the 8-line process.
- Call in the 8-line medical documentation to the district operations of the district that you are working in via phone or radio.
- District operations will make notification to R2 operations and Incident safety via e-mail. Make additional notification via phone to incident safety via phone if code red or black.
- Incident safety will make necessary notification to IMT members and document.

D10 D10opsrm@ncagr.gov 336 956 2111

R2 R2opsrm@ncagr.gov 919-542-1515

Donald Meadows SOFC Donald.Meadows@ncagr.gov 252-229-9347

Chad Brandon SOFC (t) Chad.Brandon@ncagr.gov 252 904 5614

Greg Riggs SOFC Greg.Riggs@ncagr.gov 252 229 0162

DIVISION ASSIGNMENT LIST				1. BRANCH		2. Division/Group Charlie (YMCA Camp)	
3. Incident Name Sauratown Mountain Fire				4. Operational Period Date:11/20/23 Time: 0700-1900			
5. Operations Personnel							
Operations Chief		Keith Money / David Poole		Division/Group Supervisor		Hagen Blake	
Branch Director				Division Structural			
6. Resources Assigned This Period							
Strike Team/Task Force/ Resource Designator	Leader	Last Shift	Resource #	Number Persons	EMT	Phone #	Reporting Location
TFLD	Aaron Merritt	11/28	O-10	1		425-238-4474	
TFLD	Jason Wickizer	11/26	O-22	1		712-579-8781	
DOZ 10x1	Wade Blalock			1			
FFT2	Jason Beeson			1			
7. Control Operations Task: Provide for firefighter safety, structure point protection where possible, and ID possible control lines. Pupose: Contain fire as safely as possible. End State: Keep fire contained within pre idintified lines, shile provding for firefighter safety.							
8. Special Instructions							
9. Division/Group Communication Summary							
Function	Frequency	System	Channel	Function	Frequency	System	Channel
Command	800 MHz	NCFS	Events Ch. Bravo 1	Logistics		NCFS	
Tactical Div/Group	TX: 158.7375 Tone: 156.7 Rx: 158.7375 Tone:	NCFS	INC Ch. VTAC 13	Air to Ground	TX: 171.5750 Tone: 131.8 Rx: 171.5750 Tone 131.8	NCFS	Grp. 14 INC Ch. 8
Prepared By (Resource Unit Leader) Austin Harriett			Approved By (Planning Sect. Ch.) Brian Yeich			Date 11/19/23	Time 1900

DIVISION ASSIGNMENT LIST				1. BRANCH Night		2. Division/Group Structure Protection	
3. Incident Name Sauratown Mountain Fire				4. Operational Period Date: 11/21/23 Time: 1900-0700			
5. Operations Personnel							
Operations Chief				Division/Group Supervisor		Joshua Mohler / Thomas Hoerner	
Branch Director				Division Structural			
6. Resources Assigned This Period							
Strike Team/Task Force/ Resource Designator	Leader	Last Shift	Resource #	Number Persons	EMT	Phone #	Reporting Location
DIVS	Benjamin Duda	11/26	O-27	1		541-480-6139	
DIVS	Robert Hinds	11/25	O-12	1		509-675-1346	
DIVS(t)	Jason Odom	11/24	O-88	1		252-287-5142	
ENG6 DKZ643	Jonas Redstar	11/27	E-15	3		406-833-0205	
ENG6 310 Dust Control	Cameron Mullins	11/27	E-8	3		602-505-3425	
ENG6 Paula Holter	Don Holter	11/27	E-19	2		530-333-3854	
ENG6 National Wildland Fire	Brian Ennis	11/26	E-4	3		970-779-0819	
ENG6 CTS – 1526	Christopher Connors	11/27	E-2	3		806-235-3151	
ENG6 11-5	Phillip Ramsey/ Laura Young			2		919-357-7612	
ENG6 3-31	Dawson Purvis			1		919-892-4048	
ENG6 3-21	Taylor Morton			1		704-475-4087	
ENG6 5-20	Adam Greene / Matthew Clark			2		252-287-6533	
ENG6 5-41	Bryan Ekberg			1		252-903-0979	
HCM NCWRC Asheville	Brandon Bridges	11/21	C-4	7		828-764-3816	
7. Control Operations Task: Provide for firefighter safety, structure point protection where possible, and ID possible control lines. Purpose: Contain fire as safely as possible. End State: Keep fire contained within pre identified lines, while providing for firefighter safety.							
8. Special Instructions							
9. Division/Group Communication Summary							
Function	Frequency	System	Channel	Function	Frequency	System	Channel
Command	800 MHz	NCFS	Events Ch. Bravo 1	Logistics		NCFS	
Tactical Div/Group	TX: 159.4725 Tone: 156.7 Rx: 159.4725 Tone:	NCFS	INC Ch. VTAC 14	Air to Ground	TX: 171.5750 Tone: 131.8 Rx: 171.5750 Tone 131.8	NCFS	Grp. 14 INC Ch. 8
Prepared By (Resource Unit Leader)		Approved By (Planning Sect. Ch.)		Date		Time	
Austin Harriett		Brian Yeich		11/19/23		1900	

Ordering, Check-in, Demob, and Finance Procedures

- **Resources that were ordered through the FY24 NCFS Incident Support:**
 - **Will check-in with the Sports IMT3 at the Justice Academy**
 - **Will demob with the Sports IMT3 at the Justice Academy**
- Districts will call Region 2 and ask for Severity Ordering to place all resource and supply orders.
 - Severity ORDM will generate Request Number and will submit through expanded/R2 to go up to CO
- Assigned resources will travel to the District that ordered them.
- Upon arrival, resources ordered through **R3 Fall IA Support & FY24 R2 Severity** will complete the following:
 - NC-211 NCFS Check-in Sheet and email, along with Resource Orders to ncfs.imt.plans@ncagr.gov
 - District Mechanics and/or FFEOs will perform an equipment inspection on all equipment on the OF-296 Inspection form and email a copy to frankie.britt@ncagr.gov
 - **Out-of-State resources will check-in at the Justice Academy.**
- All resources being released from a fire will need to be submitted to R2 Ops for reassignment/area of staging.
 - District Ops should update Severity Resources daily by emailing ncfs.imt.plans@ncagr.gov daily by 1000 hours.
- **LODGING**
 - District Office will arrange lodging as needed for resources.
 - District Office Manager will add information to lodging tracking spreadsheet daily.
 - Rooms will be paid for by Buying Team.
 - Resources will CHECK OUT from the hotel when they leave but are not responsible for invoices.
- **SUPPLIES**
 - Severity ORDM will generate S# for supplies and submit to Buying Team for fulfillment.
 - Supply orders will be filled by a local BUYM who is assigned to the Buying Team.
 - BUYM will deliver all documentation related to purchases to the Buying Team.

- Finance
 - Submit CTRs and Shift Tickets Daily
 - Prior to demob, resource will be sent a draft 286/288 for review and approval.
 - Once approved by resource, final 286/288 will be emailed for completion.
 - Finance will email resource completed packet.
 - See attached document for daily procedures.
 - Paid-out costs will be submitted daily to CO-Ops by IMT Finance

- Resources that are preparing to demob from the District or a large fire (including out-of-state resources) should notify Demob Unit Leader Lisa Hartrick and Finance 3 days prior to their scheduled demob date.
 - 1st working day is the day following travel to the incident/assigned district, regardless of distance traveled.
 - Unless an extension is granted through the proper channels, resources will have a 14-day assignment.
 - Resources will be required to RON on their last working day and travel home the next day, unless their home is within 2-hours driving time from assigned District Office.
 - The Demob Unit Leader will email the resource the ICS 221, Demobilization Check out form.
 - A District representative will sign off on Facilities, Ground Support, and Supply; indicating that they have checked out of hotels, had their equipment inspected, and returned any supplies issued by the District.
 - A District representative will indicate an ETD from the District and an ETA to their home unit.
 - **Out-of-State resources will travel to the Justice Academy to demob.**
 - The following documents will be emailed to ncfs.imt.plans@ncagr.gov
 - ICS 221, Demobilization Check out form
 - A copy of the evaluation for the resource
 - The following documents will be emailed to ncfs.imt.finance@ncagr.gov
 - All remaining CTRs and Equipment Shift Tickets
 - Completed Equipment inspection forms, OF-296
 - Finance will email the resource their final documentation package.

Finance Information for Districts and Resources

Submit CTRs and Shift Tickets **DAILY**

Paper copies can be left at the district office to be picked up by a team member or emailed to:

ncfs.imt.finance@ncagr.gov

- Include the **Fire Name** and **District** you are assigned to in the remarks section of all CTRs and STs.
- Include dollar amount of fuel purchased in **Box 14 Remarks** on the shift ticket.
- Please show travel time on your documents and include **TRAVEL** in remarks. You only have travel on your first and last day.
- Legibly complete your CTRs and Equipment Shift Tickets using the examples below.
- Make sure you use your legal name (not a nickname) on ALL documentation.
- Only one day per CTR/Equipment Shift Ticket.
- **Make sure your incident supervisor signs your tickets before submitting them to finance.**

2023 R-3 Fall IA Support, NC-NCS-230037 Examples

CREW TIME REPORT					
(1) CREW NAME			(2) CREW NUMBER		
NCFS			(4) FIRE NAME		(5) FIRE NUMBER
			2023 R-3 FALL IA Support		NC-NCS-230037
(6)	(7)	(8)	(9)	(10)	(11)
RE-MARKS NO.	NAME OF EMPLOYEE	CLASSIFICATION	DATE	DATE	
			11/10/2023		
			Military Time		
			ON	OFF	ON
T	Chester VonWiggins	DIVS	0700	1130	
			1200	1900	
(12) REMARKS					
T = Travel					
Fire Name					
District you are working in					
(13) OFFICER-IN-CHARGE (Signature)					
Bridgit Gallagher			Digitally signed by Bridgit Gallagher Date: 2023.11.11 14:40:12 -0500		(14) TITLE (Officer-in-Charge)
					FSCC(T)
(14) NAME (Person Facing to Emergency Time Report)					(15) DATE

EMERGENCY EQUIPMENT SHIFT TICKET				E-25	
NOTE: The responsible Government Officer will update this form each day or shift and make initial and final equipment inspections.					
1. AGREEMENT NUMBER		2. CONTRACTOR (name)			
3. INCIDENT OR PROJECT NAME		4. INCIDENT NUMBER		5. OPERATOR (name)	
2023 R-3 Fall IA Support		NC-NCS-230037		VonWiggins, Chester	
6. EQUIPMENT MAKE		7. EQUIPMENT MODEL		8. OPERATOR FURNISHED BY	
Ford		F-150		<input checked="" type="checkbox"/> CONTRACTOR <input type="checkbox"/> GOVERNMENT	
9. SERIAL NUMBER		10. LICENSE NUMBER		11. OPERATING SUPPLIES FURNISHED BY	
last 5 of VIN #		PP-1234		<input checked="" type="checkbox"/> CONTRACTOR (wet) <input type="checkbox"/> GOVERNMENT (dry)	
12. DATE		13. EQUIPMENT USE			
MO/DAY/YR	START	STOP	HOURS/DAYS/MILES(circle one)	etc.)	
			WORK	SPECIAL	
11/10/23	0800	1200	4	T	
11/10/23	1200	1230	.50		
11/10/23	2000	2030	.50		
14. REMARKS (released, down time and cause, problems, etc.)					
T=Travel Rate=\$32.00 Fire Name District you are working in					
15. EQUIPMENT STATUS					
<input type="checkbox"/> a. Inspected and under agreement					
<input type="checkbox"/> b. Released by Government					
<input type="checkbox"/> c. Withdrawn by Contractor					
16. INVOICE POSTED BY (Recorder's initials)					
17. CONTRACTOR'S OR AUTHORIZED AGENT'S SIGNATURE			18. GOVERNMENT OFFICER'S SIGNATURE		19. DATE SIGNED
Chester VonWiggins			Bridgit Gallagher		11/11/23
NSN 7540-01-119-562850297-102					
OPTIONAL FORM 297 (Rev. 7-90) USDA/USDI					

CREW TIME REPORT					
(1) CREW NAME			(2) CREW NUMBER		
NCFS			(4) FIRE NAME		(5) FIRE NUMBER
			2024 NCFS Large Inc Supp		NC-NCS-230041
(6)	(7)	(8)	(9)	(10)	(11)
RE-MARKS NO.	NAME OF EMPLOYEE	CLASSIFICATION	DATE	DATE	
			11/10/2023		
			Military Time		
			ON	OFF	ON
T	Chester VonWiggins	DIVS	0700	1130	
			1200	1900	
(12) REMARKS					
T = Travel					
Fire Name					
District you are working in					
(13) OFFICER-IN-CHARGE (Signature)					
Bridgit Gallagher			Digitally signed by Bridgit Gallagher Date: 2023.11.11 14:40:12 -0500		(14) TITLE (Officer-in-Charge)
					FSCC(T)
(14) NAME (Person Facing to Emergency Time Report)					(15) DATE

EMERGENCY EQUIPMENT SHIFT TICKET				E-25	
NOTE: The responsible Government Officer will update this form each day or shift and make initial and final equipment inspections.					
1. AGREEMENT NUMBER		2. CONTRACTOR (name)			
3. INCIDENT OR PROJECT NAME		4. INCIDENT NUMBER		5. OPERATOR (name)	
2024 NCFS Large Incident Support		NC-NCS-230041		VonWiggins, Chester	
6. EQUIPMENT MAKE		7. EQUIPMENT MODEL		8. OPERATOR FURNISHED BY	
Ford		F-150		<input checked="" type="checkbox"/> CONTRACTOR <input type="checkbox"/> GOVERNMENT	
9. SERIAL NUMBER		10. LICENSE NUMBER		11. OPERATING SUPPLIES FURNISHED BY	
last 5 of VIN #		PP-1234		<input checked="" type="checkbox"/> CONTRACTOR (wet) <input type="checkbox"/> GOVERNMENT (dry)	
12. DATE		13. EQUIPMENT USE			
MO/DAY/YR	START	STOP	HOURS/DAYS/MILES(circle one)	etc.)	
			WORK	SPECIAL	
11/10/23	0800	1200	4	T	
11/10/23	1200	1230	.50		
11/10/23	2000	2030	.50		
14. REMARKS (released, down time and cause, problems, etc.)					
T=Travel Rate=\$32.00 Fire Name District you are working in					
15. EQUIPMENT STATUS					
<input type="checkbox"/> a. Inspected and under agreement					
<input type="checkbox"/> b. Released by Government					
<input type="checkbox"/> c. Withdrawn by Contractor					
16. INVOICE POSTED BY (Recorder's initials)					
17. CONTRACTOR'S OR AUTHORIZED AGENT'S SIGNATURE			18. GOVERNMENT OFFICER'S SIGNATURE		19. DATE SIGNED
Chester VonWiggins			Bridgit Gallagher		11/11/23
NSN 7540-01-119-562850297-102					
OPTIONAL FORM 297 (Rev. 7-90) USDA/USDI					

(All Out-of-State Resources only) Please record 2024 NCFS Large Fire Incident Support

(All State Resources) Please Record NC-NCS-230041 in NCFS Region 3 or NC-NCS-230048 fire number in NCFS Region 2 as Examples

*Resource is responsible for turning in all documentation to finance

**Any finance questions can be emailed to ncfs.imt.finance@ncagr.gov

(NC-211A, 9/21/2023) NCFS Incident Check-In-Sheet

Incident Name: _____

Instructions Section 1: Single Resources, Crew Boss, Strike Team Leaders, & Task Force Leaders fill in blanks and appropriate check boxes. Place Crews, Strike Teams, or Task Force personnel and equipment on back manifest only.

Incident #: _____

Request #: _____ Contracted Resource? Yes No AD

Assignment (Kind/Position): _____ Trainee: Y N
Task Book: Y N

Name (Last, First): _____

Trainee: Y N

Name of Crew/ST/TF: _____

Task Book: Y N

Agency Name: _____

Other Qualifications: _____ Trainee: Y N

Resource Type: Single Resource Strike Team Task Force Total # of Personnel: _____

Task Book: Y N

Check-in Date: _____ Check-in Time: _____

Trainee: Y N

Unit ID: _____ Call Sign: _____

Task Book: Y N

Demob NCFS Unit: _____
(Region, District, County)

Mobilization Date: _____

Demob City: _____ Demob State: _____

Last Day Off: _____

Jetport (if flying): Departure: _____ Arrival: _____ DOB: _____

Cell Phone Number: _____

Travel Method: Air/Rental Air AOV Bus Passenger POV

Pager Number: _____

Rental Company: _____ Make/Model/Yr: _____ Tag#/St: _____

Emergency Contact Name: _____

Home Address: _____

Emergency Contact Phone: _____

City St Zip

For Plans Use Only:	Posted	T-Card	Red Card
---------------------	--------	--------	----------

Instructions Section 2: Provide Call Sign, Tag # and/or Serial # for all applicable equipment

VEHICLE (Transportation)	CALL SIGN/TAG#	Check one	TPL-TRACTOR PLOW	DZR-DOZER	CALL SIGN
AUTO-Car/Sedan	_____	Type 1 (Komatsu DP65, TD-15C, TD-15E, TD-15F)	_____	_____	_____
PUP1-Pickup Type 1 (ex. F-350)	_____	Type 2 (D6D, 1450 Case, Fiat 10, D5H, TD-12, TD-12XP, JD750C)	_____	_____	_____
PUP2-Pickup Type 2 (ex. F-250)	_____	Type 3 (1150 Case B, 1150 Case E, JD700)	_____	_____	_____
PUP3-Pickup Type 3 (ex. F-150)	_____	Type 4 (TD-9, D4H, D5C, Fiat 8, JD650, Leibher 711, 850 Case)	_____	_____	_____
RADV-Radio Engineer Vehicle	_____	Type 5 (TD-8, JD450)	_____	_____	_____
SUVL-Sport Utility Vehicle	_____	Type 6 (TD-6, JD350, D-3)	_____	_____	_____
VANP-Passenger Van	_____	HEAVY EQUIPMENT	CALL SIGN/TAG#	PUMPS - MBLP	SERIAL#
VATV-All Terrain Vehicle	_____	BHOE-Backhoe	_____	Portable (Mark III)	_____
VUTV-Utility Terrain Vehicle	_____	EXCA-Excavator, Type Any	_____	4"-6" Discharge	_____
TRUCKS	CALL SIGN/TAG#	FORK-Forklift (_____ lb)	_____	Volume Lift	_____
LOWB-Lowboy/Hauling Unit	_____	FTRA-Farm Tractor (_____ hp)	_____	Volume Lift + Farm Tractor	_____
STK-Stakeside, Type Any	_____	GRD-Road Grader	_____	AIRCRAFT	NCFS#/TAIL#
STML-Mechanic Truck, Light (F-350)	_____	LDFR-Front End Loader	_____	AOSU-Air Ops Cmd. Trailer	_____
STMH-Mechanic Truck, Heavy (F-450)	_____	TDMP-Dump Truck	_____	ATS3-SEAT (AT802F)	_____
VBOX-Box Truck, (_____ Duty)	_____	MISC EQUIP	CALL SIGN/TAG#/SERIAL#	FWAA-Cessna 182	_____
ENGINE - ENG	CALL SIGN/TAG#	CS-Chainsaw	_____	FWAA-Cessna 185	_____
Type 1-1000+ GPM (300+ gal)	_____	EBAM-E-BAM	_____	FWAA-Cessna 206	_____
Type 2-500+ GPM (300+ gal)	_____	FT-Fuel Tender	_____	FWCA-Kodiak 100	_____
Type 3-150 GPM (500-1500 gal)	_____	GENR-Generator (_____ KW)	_____	FWLP-T-34 Lead Plane	_____
Type 4-50 GPM (750-1500 gal)	_____	OFFT-Mobile Office (_____ ft)	_____	HEL2-UH-1H IA	_____
Type 5-50 GPM (400-749 gal)	_____	PTBD-Portal Bridge/Bridge Truck	_____	HEL4-UH-1H+ IA	_____
Type 6-50 GPM (150-399 gal)	_____	RAWP-Mobile RAWS	_____	HEL3-AS350-B3 Trans IA	_____
Type 7-10 GPM (50-200 gal)	_____	RGTR-Rain Gun Trailer	_____	HOSU-Helio Ops Support Unit	_____
TRACK VEHICLES	CALL SIGN/SERIAL#	TBOT-Boat	_____	MRBM-Mobile Retardant Base	_____
SKDS-Fire Track	_____	TRAT-Tractor/Trailer	_____	UAR2-Unmanned Rotor Wing Type 2	_____
SKGS-Nodwell/Flex Track/Softtrack	_____	TRLR-Trailer	_____	UAR4-Unmanned Rotor Wing Type 4	_____
WATERTENDER	CALL SIGN/TAG#	OTHER EQUIP	UNIT ID	OTHER EQUIP	UNIT ID
WAT-Water Tender, All Sizes	_____	_____	_____	_____	_____

(NC-211A, 9/21/2023) **NCFS Incident Manifest Sheet**

Instructions: Crews, Strike Teams, Task Force, or Groups fill in blanks. Reference equipment types on Check-in Sheet (NC-211A) to complete manifest.

Request #: _____

Incident Name: _____

Unit Name: _____

Leaders Name: _____

PERSONNEL

#	Name (Last, First)	Position Code	Call Sign	Home Unit	Home City	Last Day Off
1						
2						
3						
4						
5						
6						
7						
8						
9						
10						
11						
12						
13						
14						
15						
16						
17						
18						
19						
20						

EQUIPMENT

#	Kind Code	Equipment Description (Call Sign & Make/Model)	Tag #, Tail # or Serial #	Operator's Name (Last, First)
1				
2				
3				
4				
5				
6				
7				
8				
9				
10				
11				
12				
13				
14				
15				
16				
17				
18				
19				
20				

INCIDENT RADIO COMMUNICATIONS PLAN		1. Incident Name Sauratown Mountain		2. Date/ Time Prepared 11/19/23 14:45		3. Operational Period Date/Time Day/Night - Nov 20-21, 2023	
4. Basic Radio Channel Utilization Mode: W=Wideband, N=Narrowband, D=Digital, M=Mixed, T=Trunked							
Radio Type	Channel Events Ch	Function	Frequency	Tone	Mode	Assignment	Remarks
Viper	Bravo2	Command	RX: 800MHz TX: 800MHz		T	Operational Communications	
VHF	INC Ch VTAC11	NCFS Tactical	RX: 151.1375 TX: 151.1375	156.7	N	Division A	
VHF	INC Ch VTAC12	NCFS Tactical	RX: 154.4525 TX: 154.4525	156.7	N	Division B	
VHF	INC Ch VTAC13	NCFS Tactical	RX: 158.7375 TX: 158.7375	156.7	N	Division C	
VHF	INC Ch VTAC14	NCFS Tactical	RX: 159.4725 TX: 159.4725	156.7	N	Structure Protection	
			RX: TX:				
			RX: TX:				
			RX: TX:				
VHF	Grp14 INC Ch8	Aviation	RX: 171.5750 TX: 171.5750	131.8 131.8	N	NC Air to Ground	
			RX: TX:				
			RX: TX:				
			RX: TX:				
			RX: TX:				
			RX: TX:				
			RX: TX:				
VHF	Inc 15	Air Guard	RX: 168.6250 TX: 168.6250	110.9	N	USFS Air Guard Channel	
			RX: TX:				
5. Prepared by (Communications Unit) Jimmy Meadows COML							

MEDICAL PLAN (ICS 206)

1. Incident Name:	2. Operational Period: Date From: _____ Time From: _____	Date To: _____ Time To: _____
--------------------------	--	----------------------------------

3. Medical Aid Stations:			
Name	Location	Contact Number(s)/Frequency	Paramedics on Site?
			<input type="checkbox"/> Yes <input type="checkbox"/> No
			<input type="checkbox"/> Yes <input type="checkbox"/> No
			<input type="checkbox"/> Yes <input type="checkbox"/> No
			<input type="checkbox"/> Yes <input type="checkbox"/> No
			<input type="checkbox"/> Yes <input type="checkbox"/> No
			<input type="checkbox"/> Yes <input type="checkbox"/> No

4. Transportation (indicate air or ground):			
Ambulance Service	Location	Contact Number(s)/Frequency	Level of Service
			<input type="checkbox"/> ALS <input type="checkbox"/> BLS
			<input type="checkbox"/> ALS <input type="checkbox"/> BLS
			<input type="checkbox"/> ALS <input type="checkbox"/> BLS
			<input type="checkbox"/> ALS <input type="checkbox"/> BLS

5. Hospitals:							
Hospital Name	Address, Latitude & Longitude if Helipad	Contact Number(s)/Frequency	Travel Time		Trauma Center	Burn Center	Helipad
			Air	Ground			
					<input type="checkbox"/> Yes Level: _____	<input type="checkbox"/> Yes <input type="checkbox"/> No	<input type="checkbox"/> Yes <input type="checkbox"/> No
					<input type="checkbox"/> Yes Level: _____	<input type="checkbox"/> Yes <input type="checkbox"/> No	<input type="checkbox"/> Yes <input type="checkbox"/> No
					<input type="checkbox"/> Yes Level: _____	<input type="checkbox"/> Yes <input type="checkbox"/> No	<input type="checkbox"/> Yes <input type="checkbox"/> No
					<input type="checkbox"/> Yes Level: _____	<input type="checkbox"/> Yes <input type="checkbox"/> No	<input type="checkbox"/> Yes <input type="checkbox"/> No
					<input type="checkbox"/> Yes Level: _____	<input type="checkbox"/> Yes <input type="checkbox"/> No	<input type="checkbox"/> Yes <input type="checkbox"/> No

6. Special Medical Emergency Procedures: <input type="checkbox"/> Check box if aviation assets are utilized for rescue. If assets are used, coordinate with Air Operations.

7. Prepared by (Medical Unit Leader): Name: _____	Signature: <u>Stewart Nismyer</u>	
8. Approved by (Safety Officer): Name: _____	Signature: <u>Chad Brandon</u>	
ICS 206	IAP Page _____	Date/Time: _____

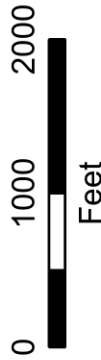
AIR OPERATIONS SUMMARY (ICS 220)

1. Incident Name:	2. Operational Period: Date From: _____ Date To: _____ Time From: _____ Time To: _____			3. Sunrise:	Sunset:	
4. Remarks (safety notes, hazards, air operations special equipment, etc.):	5. Ready Alert Aircraft: Medivac: _____ New Incident: _____			6. Temporary Flight Restriction Number: Altitude: _____ Center Point: _____ 9. Fixed-Wing (category/kind/type, make/model, N#, base): Air Tactical Group Supervisor Aircraft: _____		
	8. Frequencies: Air/Air Fixed-Wing _____ AM _____ FM _____					
	7. Personnel: Name: _____ Phone Number: _____					
Air Operations Branch Director						
Air Support Group Supervisor						
Air Tactical Group Supervisor						
Helicopter Coordinator						
THSP Air OPS						
10. Helicopters (use additional sheets as necessary):						
FAA N#	Category/Kind/Type	Make/Model	Base	Available	Start	Remarks
11. Prepared by: Name: _____ Position/Title: _____ Signature: _____						

IAP MAP

Sauratown Mountain
NC-NCS-230049
11/20/2023 Day Shift

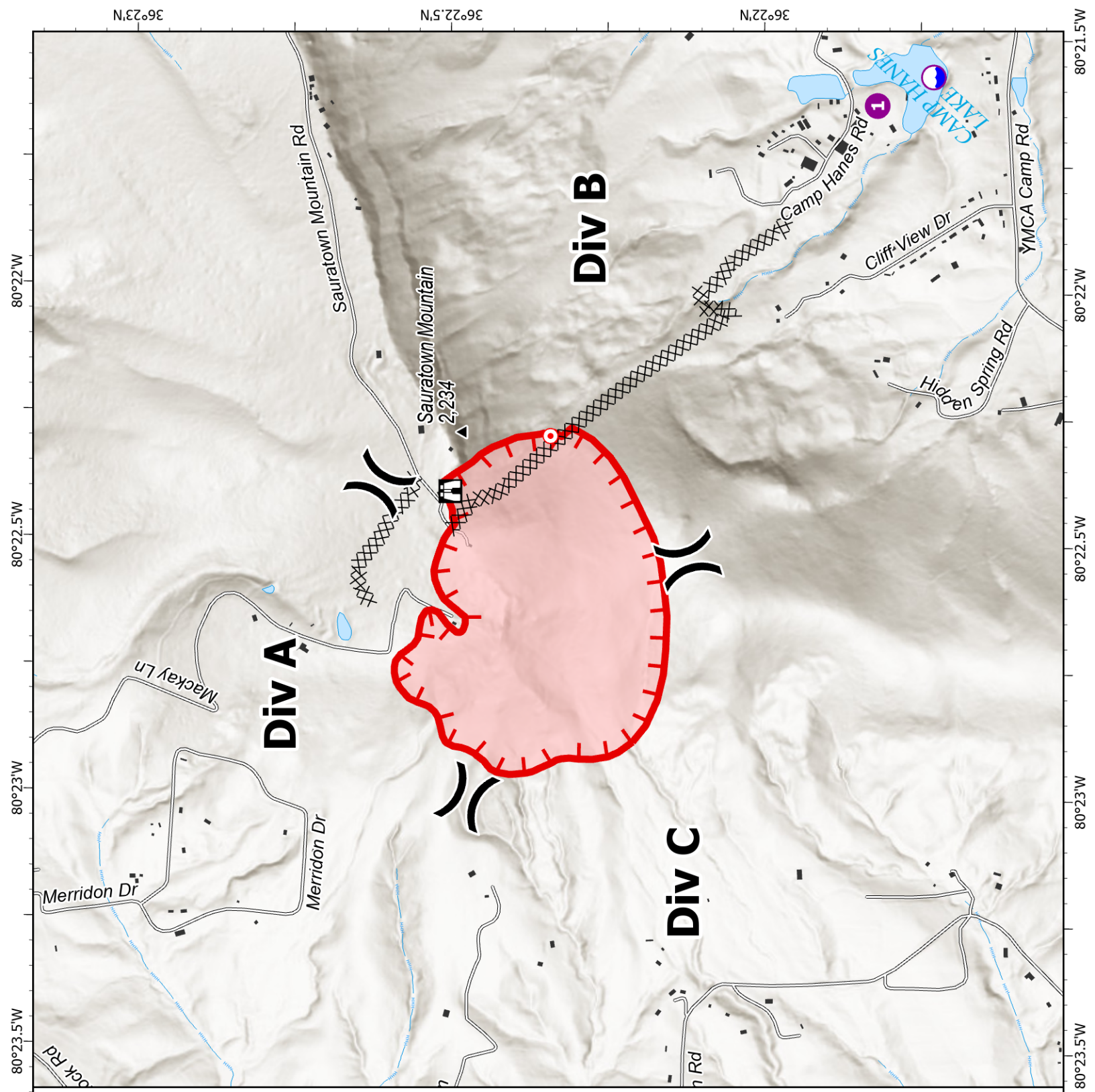
146 acres at 11/19/2023 19:08 hrs



- Wildfire Daily Fire Perimeter
- Uncontained
- Gap; Summit
- Dip Site
- Helispot
- Division Break
- Lookout
- Hot Spot - Spot Fire
- Completed Dozer Line
- Road, Unspecified
- Stream/River Intermittent
- Lake / Pond
- Structure FEMA



NCFS IMT
11/19/2023 2151
Acres from GPS
North American 1983 Datum.



IAP, PDF Fire Maps & PIO

**Current NC Wildfire
Situation Report**



IA Map's



Sauratown Mountain

Fire Map's



11/20/2023

TENTATIVE RELEASE

2023 R-3 FALL IA SUPPORT US-NC-NCS-230037

EQUIPMENT

E-29	0000	(PUP1)	PU 8-52 PP-4158
E-30	0000	(ENG6)	ENG6 11-71 PB-5310
E-31	0000	(ENG6)	ENG6 10-76 PP-4160
E-32	0000	(ENG6)	ENG6 3-30 PA-8512
E-33	0000	(ENG6)	ENG6 3-41 PP-2693
E-42	0000	(PU)	PU R2-1 PB-7568
E-44	0000	(PUP3)	PU DUPONT-1 PB-6960
E-45	0000	(PUP3)	PU CLEMMONS-2 PJ-6295
E-49	0000	(PUP3)	PU 4-1 PK-5693
E-50	0000	(PUP3)	PU RAL 2-10 PJ-6245
E-54	0000	(PUP3)	PU 12-6 PB-4904
E-72	0000	(SUV)	SUV RAL-3 JJP-5936
E-73	0000	(SUVL)	SUVL 3-11 FMK-5528
E-74	0000	(PU)	PU 8-8 PJ-6259
E-79	0000	(PUP3)	PU 13-1 PP-9491
E-85	0000	(PUP3)	PU 11-6 PA-5689
E-92	0000	(PUP3)	PU TC-1 PP-2871
E-158	1900	(PUP1)	PU 1-65 PJ-9123

OVERHEAD

O-72	0000	(ICT3)	COOK, JOHN 13-1
O-27	0000	(LOFR)	GUIDRY, JASON DUPONT-1
O-25	0000	(ICCI)	HARVELL, KEVIN R2-1
O-28	0000	(LOFR)	KIMES, JAMES CLEM 2
O-76	0000	(PIOC)	MCCULLEN, CARRIE TC-1
O-53	0000	(EQTR)	MCDUFFIE, JEANA 8-8

11/20/2023

TENTATIVE RELEASE

2023 R-3 FALL IA SUPPORT US-NC-NCS-230037

O-33	0000	(FSC2)	MYERS, RONALD RAL 2-10
O-32	0000	(PSCC)	REGISTER, DENNIS 4-1
O-65	0000	(DOCL)	ROBERSON, ROBIN 11-6
O-24	0000	(STEN)	ROOKS, DAVID 8-52
O-51	0000	(TIME)	STRICKLAND, ANGELA (RENEE) RAL 1-
O-57	0000	(SCKN)	WILLIS, JOHN 12-6
O-52	0000	(PTRC)	WILSON, KRISTI 3-11
O-92	1900	(DZOP)	BREWER, WALTER
O-119	1900	(ICT3)	PESHKIN, IRA

11/21/2023

TENTATIVE RELEASE

2023 R-3 FALL IA SUPPORT US-NC-NCS-230037

EQUIPMENT

E-9	0000	(ENG6)	ENG6 5-82 PB-2728
-----	------	--------	-------------------

OVERHEAD

O-9	0000	(FFT1)	MCLEMORE, JUSTIN 5-82
-----	------	--------	-----------------------

11/22/2023

TENTATIVE RELEASE

2023 R-3 FALL IA SUPPORT US-NC-NCS-230037

EQUIPMENT

E-67	0000	(PU)	PU T-1 PA-7183
E-80	0000	(PU)	PU 7-1 PP-9495
E-86	0000	(PU)	PU BL-3 PJ-6206
E-91	0000	(PUP1)	PU 6-21 PB-5314
E-94	0000	(PUP3)	PU 5-75 PK-7740
E-96	0000	(PUP1)	PU 8-61 PP-4159
E-99	0000	(PUP3)	PU 3-13 PJ-6297
E-137	0000	(PUP1)	PU PJ-1504
E-138	0000	(PU)	PU PK-8557
E-139	0000	(PU)	PU PA-4961

OVERHEAD

O-46	0000	(FACL)	ARNEY, DEREK T-1
O-75	0000	(ICT4)	ARNOLD, CHRISTOPHER BLAKE 6-21
O-73	0000	(DZOP)	AYCOCK, AUSTIN 5-75
O-79	0000	(HEQB)	DAVIS, MICHAEL 8-61
O-66	0000	(DMOB)	HARTRICK, LISA BL-3
O-80	0000	(BUYM)	HOWELL, JUSTIN 3-13
O-60	0000	(FOBS)	PETRUNCIO, MICHAEL 7-1

MEDICAL PLAN (ICS 206 WF)

Controlled Unclassified Information//Basic

Medical Incident Report

FOR A NON-EMERGENCY INCIDENT, WORK THROUGH CHAIN OF COMMAND TO REPORT AND TRANSPORT INJURED PERSONNEL AS NECESSARY.

FOR A MEDICAL EMERGENCY: IDENTIFY ON-SCENE INCIDENT COMMANDER BY NAME AND POSITION AND ANNOUNCE "MEDICAL EMERGENCY" TO INITIATE RESPONSE FROM IMT COMMUNICATIONS/DISPATCH.

Use the following items to communicate situation to communications/dispatch.

1. CONTACT COMMUNICATIONS / DISPATCH (Verify correct frequency prior to starting report)

Ex: "Communications, Div. Alpha. Stand-by for Emergency Traffic."

2. INCIDENT STATUS: Provide incident summary (including number of patients) and command structure.

Ex: "Communications, I have a Red priority patient, unconscious, struck by a falling tree. Requesting air ambulance to Forest Road 1 at (Lat./Long.) This will be the Trout Meadow Medical, IC is TFLD Jones. EMT Smith is providing medical care."

Severity of Emergency / Transport Priority	<input type="checkbox"/> RED / PRIORITY 1 Life or limb threatening injury or illness. Evacuation need is IMMEDIATE <i>Ex: Unconscious, difficulty breathing, bleeding severely, 2° – 3° burns more than 4 palm sizes, heat stroke, disoriented.</i> <input type="checkbox"/> YELLOW / PRIORITY 2 Serious Injury or illness. Evacuation may be DELAYED if necessary. <i>Ex: Significant trauma, unable to walk, 2° – 3° burns not more than 1-3 palm sizes.</i> <input type="checkbox"/> GREEN / PRIORITY 3 Minor Injury or illness. Non-Emergency transport <i>Ex: Sprains, strains, minor heat-related illness.</i>	
Nature of Injury or Illness & Mechanism of Injury		<i>Brief Summary of Injury or Illness (Ex: Unconscious, Struck by Falling Tree)</i>
Evacuation Request		<i>Air Ambulance / Short Haul/Hoist Ground Ambulance / Other</i>
Patient Location		<i>Descriptive Location & Lat. / Long. (WGS84)</i>
Incident Name		<i>Geographic Name + Medical (Ex: Trout Meadow Medical)</i>
On-Scene Incident Commander		<i>Name of on-scene IC of Incident within an Incident (Ex: TFLD Jones)</i>
Patient Care		<i>Name of Care Provider (Ex: EMT Smith)</i>

3. INITIAL PATIENT ASSESSMENT: Complete this section for each patient as applicable (start with the most severe patient)

Patient Assessment: See IRPG PAGE 106

Treatment:

4. EVACUATION PLAN:

Evacuation Location (if different): (Descriptive Location (drop point, intersection, etc.) or Lat. / Long.) Patient's ETA to Evacuation Location:

Helispot / Extraction Site Size and Hazards:

5. ADDITIONAL RESOURCES / EQUIPMENT NEEDS:

Example: Paramedic/EMT, crews, immobilization devices, AED, oxygen, trauma bag, IV/fluid(s), splints, rope rescue, wheeled litter, HAZMAT, extrication

6. COMMUNICATIONS: Identify State Air/Ground EMS Frequencies and Hospital Contacts as applicable

Function	Channel Name/Number	Receive (RX)	Tone/NAC *	Transmit (TX)	Tone/NAC *
COMMAND					
AIR-TO-GRND					
TACTICAL					

7. CONTINGENCY: Considerations: If primary options fail, what actions can be implemented in conjunction with primary evacuation method? Be thinking ahead..

8. ADDITIONAL INFORMATION: Updates/Changes, etc.

REMEMBER: Confirm ETAs of resources ordered. Act according to your level of training. Be Alert. Keep Calm. Think Clearly. Act Decisively.

