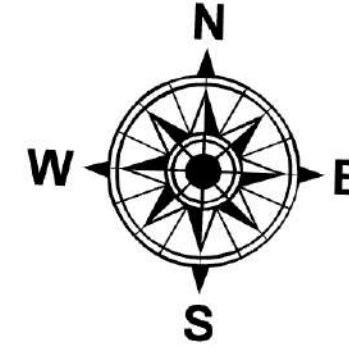


NCFS Region 3

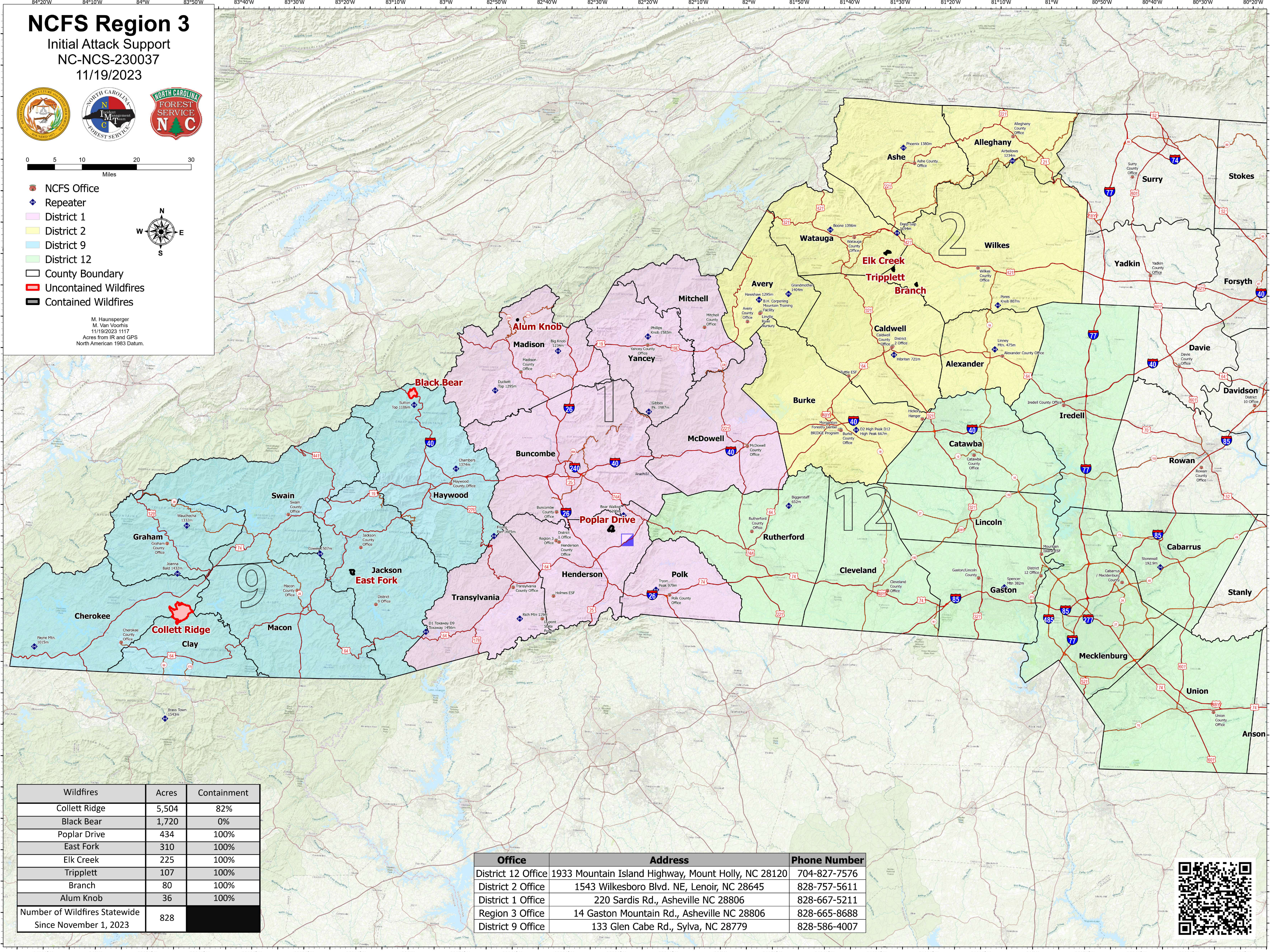
Initial Attack Support
 NC-NCS-230037
 11/19/2023



- NCFS Office
- ◆ Repeater
- District 1
- District 2
- District 9
- District 12
- County Boundary
- Uncontained Wildfires
- Contained Wildfires



M. Haunsperger
 M. Van Vroomis
 11/19/2023 11:17
 Acres from IR and GPS
 North American 1983 Datum.



Wildfires	Acres	Containment
Collett Ridge	5,504	82%
Black Bear	1,720	0%
Poplar Drive	434	100%
East Fork	310	100%
Elk Creek	225	100%
Trippliett Branch	107	100%
Alum Knob	36	100%
Number of Wildfires Statewide Since November 1, 2023	828	

Office	Address	Phone Number
District 12 Office	1933 Mountain Island Highway, Mount Holly, NC 28120	704-827-7576
District 2 Office	1543 Wilkesboro Blvd. NE, Lenoir, NC 28645	828-757-5611
District 1 Office	220 Sardis Rd., Asheville NC 28806	828-667-5211
Region 3 Office	14 Gaston Mountain Rd., Asheville NC 28806	828-665-8688
District 9 Office	133 Glen Cabe Rd., Sylva, NC 28779	828-586-4007

