

# Black Cove Complex Incident Action Plan

Thursday, April 3, 2025

Operational Period 0800 - 2000



NCDA&CS



**Fire #:** NC-NCS-250019 Black Cove

**Fire #:** NC-NCS-250021 Deep Woods


**Fire #:** NC-NCS-250024 Fish Hook

Check In, Demob, IAP, Maps & Fire Danger Card



Documentation Email: [ncblackcovecomplex@gmail.com](mailto:ncblackcovecomplex@gmail.com)

## INCIDENT OBJECTIVES (ICS 202)

INCIDENT OBJECTIVES		1. Incident Name	2. Date Prepared	3. Time Prepared
		<b>Black Cove Complex</b>	<b>04/2/25</b>	<b>2000</b>
4. Operational Period (DATE/TIME)		From: Date 04/03/25 Time 0800 To: Date 04/03/25 Time 2000		
5. General Control Objectives For The Incident (Include Alternatives):				
<b>Management Objectives</b> <ol style="list-style-type: none"><li>1. Ensure responder and public safety by making timely, risk informed decisions that align with values at risk.</li><li>2. Foster relationships with local cooperators and the public by providing coordinated, accurate, and timely information.</li><li>3. Manage costs commensurate with values at risk by coordinating with the Agency Administrators and Incident Business Advisors.</li></ol>				
<b>Control Objectives</b> <ol style="list-style-type: none"><li>1. Maintain and improve established control lines to keep the fire footprint unchanged.</li><li>2. Protect homes and other improvements through mop-up.</li><li>3. Repair suppression impacted areas to agency standards.</li></ol>				
<b>Black Cove Fire</b> <p>Keep the fire: east of Scarlet Mountain Road, north of I-26, west of Raccoon Mountain, south and east of Big Hungry Creek.</p>				
<b>Deep Woods Fire</b> <p>Keep the fire: east of Cove Creek, west of Silver Creek, north of Holbert Cove, south of Green River Cove Road.</p>				
<b>Fish Hook Fire</b> <p>Keep the fire within current containment features.</p>				
6. Weather Forecast For Period				
<b>See Attached Weather Forecast.</b>				
7. General Safety Message				
<b>See Attached Safety Message.</b>				
8. ATTACHEMENTS (X IF ATTACHED)				
Organizational List – ICS 203 Fire Weather Forecast Fire Behavior Safety Message Div. Assignment Lists - ICS 204 Communications Plan - ICS 205 Air Operations Summary – ICS220		Medical Plan - ICS 206 IWI - BLACK COVE COMPLEX 8-Line - ICS 206 Incident Map Tentative Demob Unit Log - ICS 214		
9. Prepared By (Resource Unit Leader Trainee) Eve Ciotti		10. Approved By (Incident Commander) 		

# ORGANIZATION ASSIGNMENT LIST (ICS 203)

<b>1. Incident Name: Black Cove Complex</b>		<b>2. Operational Period:</b>		<b>Date From: 4/3/25 Date to 4/3/25</b> <b>Time From: 0800 Time To: 2000</b>	
<b>3. Command and General Staff:</b>			<b>6. Logistics Section (continued):</b>		
Incident Commander	Michael Good	Communications Unit	James Meadows		
Dept. IC (Polk Co. EM)	Bobby Arledge	COMT	Jeffrey Bumgarner		
Safety Officer	Donald Meadows, Robert Perry	RADO - Day	Alex Pennell		
Safety Officer	Cougan Carruthers	RADO - Night	Josh Anderson		
Liaison Officer	James Kimes, Adam Livermore	INTD - Day	Nathan Jackson, Kevin Bernal		
Public Information Officer	Jeremy Waldrop (828-337-7187)	INTD - Night	Garrett Mcinniss, Dominic Taylor		
Public Information Officer	Kellie Cannon	<b>7. Operations Section:</b>			
<b>4a. Agency Administrators:</b>		Lead Ops			
NCFS	Michael Cheek	Planning Ops	Kevin Hill, Chase Payne (t)		
<b>4b. Agency Representatives:</b>		Field Ops			
Henderson Co. EM	Tim McFalls	<b>a. Black Cove</b>			
NC EM	David Breedlove	Branch Director			
OSFM	Terry Young	Division/Group	A/B	Rich Harnden, Adam Brooks (t)	
<b>5. Planning Section:</b>		Division/Group	C/D	Michael Huffman	
Chief	Don Watson	Division/Group	E	Ivan Carrier	
	Dennis Register	Division/Group	E	Josh Powell (t)	
THSP - FMAG	Richard Cockerham	Division/Group	F	Jason Rodriguez	
Resources Unit	Eve Ciotti (t)	Division/Group	F	John Haskvitz (t)	
Status Check - In	Josh Johnston (t)	<b>b. Deep Woods / Fish Hook</b>			
	Trevor Davis (t)	Branch Director			
Situation Unit	James Caddy	Division/Group	M	Darrin Keyse / Ray Black (t)	
GIS Specialist	Katie Scheip	Division/Group	N/O/P / Fish Hook		Josh Brock / Cody Kingsbury (t)
	AJ Lang	Division/Group			
	Matt Haunsperger	Division/Group			
	Aaron Chamblee	Division/Group			
Field Observer	Jared Tardiff (t)	<b>c. Air Operations Branch</b>			
Fire Behavior	Gary McLendon (t)	Air Ops Branch Director	Mike Kerrigan		
IMET	Terry Lebo	Helibase Manager	John Nobles		
Demobilization Unit	Lisa Hartrick	Helicopter Manager	Anthony Kornegay		
Documentation Unit	Carla Hunt (t)	Air Support Grp Supervisor	Efraim Garcia		
<b>6. Logistics Section:</b>		<b>8. Finance Section:</b>			
Chief	Frankie Britt	Chief	Bridgit Gallagher		
	Patrick Raynor (t)	Time Unit	Renee Strickland		
	Kimberly Burch	PTRC	Heather Kelly		
Supply Unit	Travis Ruff	ETRC	Jennifer Williams		
Ordering Manager	James Moeller (t)	Cost Unit	Kristi Wilson		
Mechanic	Walter Capps, Christopher Williams	BUYL	Kelly Howard (t)		
Equipment Manager	William Cuthrell, Larry Field	Buying Team Member	Lee Ann Blackmon, Greg Hall		
Equipment Manager	Jonathan Whitman (t)		Anna Donnelley		
Facilities Unit	Derek Arney	Driver	Jaimee Cappelletti, Paul Mowrey		
Food Unit	Michael Fry, Dan Eason		Justin Howell, David Hoffer		
Driver	Connor Griggs, Brantly Wagman		Daniel Blackburn, Ben Thomas		
Medical Unit	Doug Powell		Hunter Cook		
<b>9. Prepared by: Name: Eve Ciotti</b>		Position/Title: RESL(t)		Signature: <i>Eve Ciotti</i>	
ICS 203		Date Prepared: 4/2/2025		Time Prepared: 1800	



## Black Cove Fire Weather Forecast

**FORECAST NO:** 12  
**PREDICTION FOR:** 0800 4/3/25-0800 4/4/25  
**FORECAST ISSUED:** 1800 EDT 4/2/2025

**NAME OF FIRE:** Black Cove Fire  
**UNIT:** NCFS Polk County  
**SIGNED:** *Terry Lebo* Incident Meteorologist

---

### WEATHER DISCUSSION

A warming trend begins Thursday as deep southerly flow sets up in the wake of the departing warm front. Clouds will linger into Thursday afternoon before starting to break up. Building surface and mid-level ridge will lead to temperatures well above normal Friday and Saturday with afternoon humidity dropping down near 30%. A strong cold front will move across the region late Sunday or Monday bringing another round of showers and thunderstorms.

---

#### THURSDAY:

**WEATHER:** Mostly cloudy with scattered showers through early afternoon. Areas of fog in the morning. Some clearing in the afternoon.

**TEMPERATURES:** **Valleys (1000-1500 ft):** 71-75 F. **Ridges (1500-2500 ft):** 67-72 F.  
**HUMIDITY:** **Valleys (1000-1500 ft):** 65-70% **Ridges (1500-2500 ft):** 70-75%.

**WINDS (20ft):** **Valleys:** Light and variable becoming southwest 4-7 mph with gusts 8-12 mph in the afternoon.  
**Ridges:** From the southwest 10-15 mph with gusts around 25 mph.

**CHC RAIN >0.10":** 20%  
**INVERSION:** Moderate inversion breaking 1000-1100. Mixing heights around 2000 ft.

---

#### TONIGHT:

**WEATHER:** Mostly cloudy with some clearing around daybreak.

**TEMPERATURES:** **Valleys (1000-1500 ft):** 50-55 F. **Ridges (1500-2500 ft):** 53-58 F.  
**HUMIDITY:** **Valleys (1000-1500 ft):** 90-100% **Ridges (1500-2500 ft):** 90-100%.

**WINDS:** **Valleys:** From the southwest 3-6 mph becoming light downslope between 2000-2100.  
**Ridges:** From the southwest 5-8 mph with gusts 10-15 mph becoming northeast after midnight.

**CHC RAIN >0.10":** 0%  
**INVERSION:** Moderate inversion developing around 2100.

---

#### FRIDAY:

**WEATHER:** Mostly sunny.

**TEMPERATURES:** **Valleys (1000-1500 ft):** 79-84 F. **Ridges (1500-2500 ft):** 74-78 F.  
**HUMIDITY:** **Valleys (1000-1500 ft):** 35-40% **Ridges (1500-2500 ft):** 40-45%.

**WINDS (20ft):** **Valleys:** Light and variable becoming southwest 5-8 mph with gusts around 15 mph by 1000 except upslope 2-4 mph with gusts 5-8 mph on north and east aspects after 1000.  
**Ridges:** From the southwest 10-15 mph with gusts 20-25 mph.

**CHC RAIN >0.10":** 0%  
**INVERSION:** Moderate inversion breaking 0800-0900. Mixing heights around 4000 ft.

---

### EXTENDED FORECAST:

**Saturday:** Partly to mostly sunny. Highs: 76-86 F; min humidity 30-40%. Lows: 56-64 F; max humidity 70-80%. Southwest winds around 15 mph with gusts around 30 mph.

**Sunday:** Mostly cloudy with afternoon showers and thunderstorms. Highs: 70-80 F; min humidity 45-55%. Lows: 44-52 F; max humidity 70-90%. Southwest winds around 15 mph with gusts 25-30 mph.

**Monday:** Mostly sunny. Highs: 60-70 F; min humidity 40-50%. Lows: 35-43 F; max humidity 60-80%. West-northwest winds around 15 mph with gusts around 25 mph.

## FIRE BEHAVIOR FORECAST

<b>FORECAST NUMBER:</b> 13	<b>TYPE OF FIRE:</b> Wildfire
<b>FIRE NAME:</b> Black Cove	<b>OPERATIONAL PERIOD:</b> Day April 3, 2025
<b>DATE ISSUED:</b> April 2, 2025	<b>TIME ISSUED:</b> 1900
<b>UNIT:</b> NCFS D1-Polk	<b>SIGNED:</b> <i>Gary McLondon</i> <i>Shan(C)</i>

### WEATHER:

“Lingering Clouds to Sunshine”

See Fire Weather Forecast for Details

**CWR:** 20%    **Temp:** 70    **RH:** 65%    **Winds:** SW 12 Gust 27

***Local Weather Thresholds that shout WATCH OUT!***  
***Temperatures above 60°, Relative Humidity below 30%, 20” winds above 10 mph***

### FUELS:

Stands of mixed hardwoods dominate the area. However, there are also areas where conifers intermix with these hardwood stands. Cut units with light logging slash on the landscape exist. There are also areas of scattered mountain laurel through the understory. Tropical Storm Helene caused pockets of jackstraw timber and a jackpot of fine dead fuels.

***Today’s Forecasted Fine Dead Fuel Moisture: 9% unshaded, 12% shaded***

### FIRE BEHAVIOR:

Lingering clouds and humidities should keep any activity limited. Isolated stumps, snags, and dead and downed fuels will continue to smolder if sheltered by previous moisture that fell across the area.  
No fire spread is expected.

### Safety

Be alert. Keep calm. Think clearly. Act decisively.



## **INCIDENT HEALTH AND SAFETY MESSAGE**

**INCIDENT:** Black Cove Complex

**DATE/SHIFT:** Thursday April 3, 2025

**Major Hazards and Risks:** Hazard Trees, Driving & Traffic, and Steep Terrain/Rolling Debris

# **Transfer of Command**

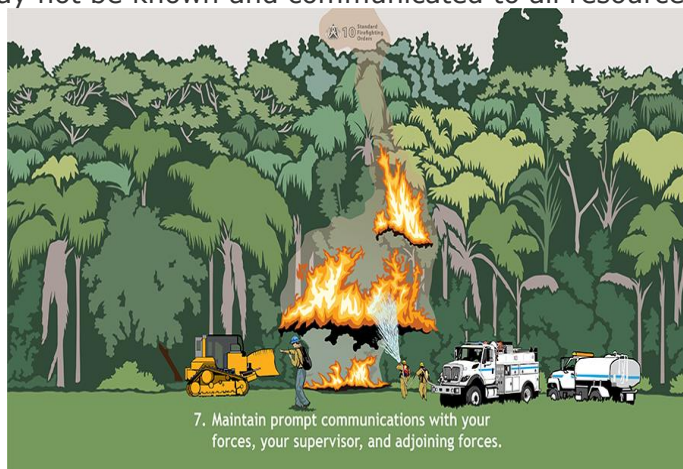
Risks to fireline personnel increase significantly during transfer of command periods regardless of the size or complexity of the incident. There is a high potential for fatalities, serious injuries, or incidents during transfer of command. Be proactive in mitigating the risks by proper implementation of LCES – Lookouts, Communications, Escape Routes, and Safety Zones.

## **Factors for increased risks to fireline personnel during transition periods include:**

- No or poor briefing of incoming personnel.
- Lack of fire weather and behavior information, both forecast and observed.
- Communications: face-to-face briefings may not be possible and radio frequencies may be overextended and/or changing due to the increased demands on the system.
- Initial attack resources may not have checked in and the Incident Commander (IC) may not be aware of the number, type, and location of all resources.
- Location of safety zones and escape routes may not be known and communicated to all resources.
- Not all resources know who is in command.

### **Mitigation actions to take:**

- Lookouts: post and maintain your own lookouts.
- Communications: maintain existing communications with your own and adjacent resources, as well as your original supervisor, while you are developing communications with incoming adjacent resources and your new supervisor.
- Escape routes and safety zones: identify escape routes and ensure incoming resources are aware of their locations; be aware that your original escape routes and safety zones may no longer be accessible due to changing fire behavior or your increased distance from them.
- Plan for transitions to occur at the morning briefing.
- Utilize the IRPG briefing checklist



DIVISION/GROUP ASSIGNMENT LIST (ICS 204)

1. Incident Name				3			
Black Cove				Branch:	Division: Alpha / Bravo		
2. Operational Period:							
Date: 4/3/2025		Time: 0800-2000					
4. Operations Personnel							
Operations Chief				Field Operations		Hector Medrano	
Branch Director				Division / Group Supervisor		Rich Harnden / Adam Brooks (t)	
				Safety Officer Field		Brandon Hill	
5. Resources Assigned this Period							
Strike Team/Task Force/ Resource Designator		RO#	LWD	Leader	Number Persons	Drop Off PT./Time	Pick Up PT./Time
TFLD ODF		O-123	4/10	Michael Cearn	1		
NC Wildlife CR2		O-1002			17		
6. Control Operations/Work Assignments:							
Mop-up control lines and around structures approx. 200 feet inside fire perimeter and mitigate remaining hazards and concerns.							
7. Special Instructions:							
Utilize field Maps to capture line locations and suppression repair needs							
Coordinate closely with adjacent divisions, keep OSC informed and maintain a positive public presence. Relay needs for next day’s shift to Planning Ops by 1300.							
Remove trash from lines and backhaul unneeded supplies.							
8. Division/Group Communication Summary							
Function	Channel	RX Frequency N/W	RX Tone/NAC	TX Frequency N/W	TX Tone/NAC	Radio Type	Mode
Command	Command	151.2200	136.5000	159.3450	131.8000	VHF	N
Tactical Div/Group	TAC-1	151.4000	136.5000	151.4000	136.5000	VHF	N
FD/VFD Tactical	Events Delta 1	800Mhz		800Mhz		Viper	T
Air Guard	INC-15	168.6250	None	168.6250	110.9000	VHF	N
Air to Ground	A-G Primary	171.5750	131.8000	171.5750	131.8000	VHF	N
Air to Ground	A-G Secondary	172.2750	131.8000	172.2750	131.8000	VHF	N
Tactical Medivac Helo	Events Delta 4	800Mhz		800Mhz		Viper	T
9. Prepared by (Resource Unit Leader) Eve Ciotti (t)			Approved by (Plans Section Chief) Don Watson			Date: 4/2/25	Time: 1900

DIVISION/GROUP ASSIGNMENT LIST (ICS 204)

1. Incident Name			3				
Black Cove			Branch:	Division:  Charlie / Delta			
2. Operational Period:							
Date: 4/3/2025		Time: 0800-2000					
4. Operations Personnel							
Operations Chief			Field Operations		Hector Medrano		
Branch Director			Division / Group Supervisor		Michael Huffman		
5. Resources Assigned this Period							
Strike Team/Task Force/ Resource Designator	RO#	LWD	Leader	Number Persons	Drop Off PT./Time	Pick Up PT./Time	
TFLD	O-120	4/11	Danile Moore	1			
HEQB	O-145	4/11	Ayres	1			
HEQB	O-120	4/11	Moore	1			
ENG6 Tenn.	E-55	4/7	McFarland	2			
ENG6 Tenn.	E-56	4/7	Mash	2			
ENG6 ODF	E-106	4/5	Jackson/Tryon	2			
ENG6 ODF	E-107	4/5	Koonce	2			
ENG6 ODF	E-108	4/5	Gregory	2			
6. Control Operations/Work Assignments:							
Mop-up control lines and around structures approx. 200 feet inside fire perimeter and mitigate remaining hazards and concerns.							
7. Special Instructions:							
Utilize field Maps to capture line locations and suppression repair needs							
Coordinate closely with adjacent divisions, keep OSC informed and maintain a positive public presence. Relay needs for next day’s shift to Planning Ops by 1300.							
Remove trash from lines and backhaul unneeded supplies.							
8. Division/Group Communication Summary							
Function	Channel	RX Frequency N/W	RX Tone/NAC	TX Frequency N/W	TX Tone/NAC	Radio Type	Mode
Command	Command	151.2200	136.5000	159.3450	131.8000	VHF	N
Tactical Div/Group	TAC-2	151.3100	136.5000	151.3100	136.5000	VHF	N
FD/VFD Tactical	Events Delta 1	800Mhz		800Mhz		Viper	T
Air Guard	INC-15	168.6250	None	168.6250	110.9000	VHF	N
Air to Ground	A-G Primary	171.5750	131.8000	171.5750	131.8000	VHF	N
Air to Ground	A-G Secondary	172.2750	131.8000	172.2750	131.8000	VHF	N
Tactical Medivac Helo	Events Delta 4	800Mhz		800Mhz		Viper	T
9. Prepared by (Resource Unit Leader) Eve Ciotti (t)		Approved by (Plans Section Chief) Don Watson		Date: 4/2/25			Time: 1900



DIVISION/GROUP ASSIGNMENT LIST (ICS 204)

1. Incident Name				3			
Black Cove				Branch:	Division: Echo		
2. Operational Period:							
Date: 4/3/2025		Time: 0800-2000					
4. Operations Personnel							
Operations Chief				Field Operations		Hector Medrano	
Branch Director				Division /Group Supervisor		Ivan Carrier / Josh Powell (t)	
5. Resources Assigned this Period							
Strike Team/Task Force/ Resource Designator		RO#	LWD	Leader	Number Persons	Drop Off PT./Time	Pick Up PT./Time
TFLD ODF		E-105	4/6	Moodenbaugh	2		
SMOD SCFC		E-11	4/4	Palmer	11		
ME DNR		E-185	4/11	Brad	4		
ODF ENG6		E-104	4/6	Valencia	2		
ODF ENG6		E-103	4/6	Feldman	2		
6. Control Operations/Work Assignments:							
Control operations/work assignments:							
Mop-up control lines and around structures approx. 200 feet inside fire perimeter and mitigate remaining hazards and concerns.							
7. Special Instructions:							
Utilize field Maps to capture line locations and suppression repair needs							
Coordinate closely with adjacent divisions, keep OSC informed and maintain a positive public presence. Relay needs for next day’s shift to Planning Ops by 1300.							
Remove trash from lines and backhaul unneeded supplies.							
8. Division/Group Communication Summary							
Function	Channel	RX Frequency N/W	RX Tone/NAC	TX Frequency N/W	TX Tone/NAC	Radio Type	Mode
Command	Command	151.2200	136.5000	159.3450	131.8000	VHF	N
Tactical Div/Group	TAC-3	151.2650	136.5000	151.2650	136.5000	VHF	N
FD/VFD Tactical	Events Delta 1	800Mhz		800Mhz		Viper	T
Air Guard	INC-15	168.6250	None	168.6250	110.9000	VHF	N
Air to Ground	A-G Primary	171.5750	131.8000	171.5750	131.8000	VHF	N
Air to Ground	A-G Secondary	172.2750	131.8000	172.2750	131.8000	VHF	N
Tactical Medivac Helo	Events Delta 4	800Mhz		800Mhz		Viper	T
9. Prepared by (Resource Unit Leader) Eve Ciotti (t)			Approved by (Plans Section Chief) Don Watson		Date: 4/2/25		Time: 1900

DIVISION/GROUP ASSIGNMENT LIST (ICS 204)

1. Incident Name				3			
Black Cove				Branch:	Division: Foxtrot		
2. Operational Period:							
Date: 4/3/2025		Time: 0800-2000					
4. Operations Personnel							
Operations Chief				Field Operations		Hector Medrano	
Branch Director				Division / Group Supervisor		Jason Rodriguez / John Haskvitz (t)	
5. Resources Assigned this Period							
Strike Team/Task Force/ Resource Designator		RO#	LWD	Leader	Number Persons	Drop Off PT./Time	Pick Up PT./Time
TFLD ODF		O-121	4/10	Chalmers	1		
TFLD ODF		O-124	4/10	O’nion	1		
TFLD (t) ODF		O-125	4/10	Neys	1		
Greyback Alpha 2		C-10	4-10	Babbitt	20		
ENG6 ODF		E-115	4/5	Cline/Anderson	2		
ENG6 ODF		E-117	4/5	Rudolf/Becktold	2		
6. Control Operations/Work Assignments:							
Mop-up control lines and around structures approx. 200 feet inside fire perimeter and mitigate remaining hazards and concerns.							
7. Special Instructions:							
Utilize field Maps to capture line locations and suppression repair needs							
Coordinate closely with adjacent divisions, keep OSC informed and maintain a positive public presence. Relay needs for next day’s shift to Planning Ops by 1300.							
Remove trash from lines and backhaul unneeded supplies.							
.							
8. Division/Group Communication Summary							
Function	Channel	RX Frequency N/W	RX Tone/NAC	TX Frequency N/W	TX Tone/NAC	Radio Type	Mode
Tactical Div/Group	Command	151.2200	136.5000	159.3450	131.8000	VHF	N
FD/VFD Tactical	VCALL 10	156.7	136.5000	156.7	136.5000	VHF	N
Air Guard	Events Delta 1	800Mhz		800Mhz		Viper	T
Air to Ground	INC-15	168.6250	None		168.6250		110.9000
Air to Ground	A-G Primary	171.5750	131.8000	171.5750	131.8000	VHF	N
Tactical Medivac Helo	A-G Secondary	172.2750	131.8000	172.2750	131.8000	VHF	N
9. Prepared by (Resource Unit Leader) Eve Ciotti (t)			Approved by (Plans Section Chief) Don Watson			Date: 4/2/25	Time: 1900

DIVISION/GROUP ASSIGNMENT LIST (ICS 204)

1. Incident Name			3				
Deep Woods			Branch:	Division: M			
2. Operational Period:							
Date: 4/3/2025		Time: 0800-2000					
4. Operations Personnel							
Operations Chief				Field Operations		Hector Medrano	
Safety – Line				Division / Group Supervisor		Darrin Keyse / Ray Black (t)	
Strike Team/Task Force/ Resource Designator		RO#	LWD	Leader	Number Persons	Drop Off PT./Time	Pick Up PT./Time
TFLD ODF		O-122	4/10	Peter Anthony	1		
TFLD - NCSP		O-7.15	4/3	Haywood	1		
TFLD MISS.		O-153	4/12	Crews	1		
Safety Line S. Dakota		O-13	4/7	Cliff McClure	1		
ENG6 Patrick Environment		E-144	4/1	Marr	3		Will be crew swapping
Grayback Crew 2 Bravo		C-9	4/10	Dougherty	20		
CR2I - ARDEN SOLUTIONS, INC NCC 12B		C-8	4/11	Aguirre	20		
ENG6 USFS MT-CGF		E-120	4/3	Spence	4		Will be crew swapping
ENG6 ODF		E-127	4/6	Kling/Reed	2		
ENG6 ODF		E-192	4/6	Brink/Spiesschaert	2		
ENG6 ODF		E-125	4/6	Cavender/Ricks	2		
6. Control Operations/Work Assignments:							
Mop-up control lines and around structures approx. 200 feet inside fire perimeter and mitigate remaining hazards and concerns.							
7. Special Instructions:							
Utilize field Maps to capture line locations and suppression repair needs							
Coordinate closely with adjacent divisions, keep OSC informed and maintain a positive public presence. Relay needs for next day’s shift to Planning Ops by 1300.							
Remove trash from lines and backhaul unneeded supplies.							
8. Division/Group Communication Summary							
Function	Channel	RX Frequency N/W	RX Tone/NAC	TX Frequency N/W	TX Tone/NAC	Radio Type	Mode
Command	Command	151.2200	136.5000	159.3450	131.8000	VHF	N
Tactical Div/Group	VTAC 11	154.4525	156.7000	154.4525	156.7000	VHF	N
FD/VFD Tactical	Events Delta 2	800Mhz		800Mhz		Viper	T
Air Guard	Air Guard	168.6250	None	168.6250	110.9000	VHF	N
Air to Ground	A-G Primary	171.5750	131.8000	171.5750	131.8000	VHF	N
Air to Ground	A-G Secondary	172.2750	131.8000	172.2750	131.8000	VHF	N
Tactical Medivac Helo	Events Delta 4	800Mhz		800Mhz		Viper	T
9. Prepared by (Resource Unit Leader) Eve Ciotti (t)			Approved by (Plans Section Chief) Don Watson		Date: 4/2/25		Time: 1900

DIVISION/GROUP ASSIGNMENT LIST (ICS 204)

1. Incident Name			3				
Deep Woods			Branch:	Division: N/O/P / Fish Hook			
2. Operational Period:							
Date: 4/3/2025		Time: 0800-2000					
4. Operations Personnel							
Operations Chief			Field Operations		Hector Medrano		
Safety – Line	Coogan Carruthers / Josh Bell (t)		Division / Group Supervisor		Joshua Brock O-100 / Cody Kingsbury (t)		
Strike Team/Task Force/ Resource Designator	RO#	LWD	Leader	Number Persons	Drop Off PT./Time	Pick Up PT./Time	
ENG3 MI DNR	E-46		Pine	3			
ENG6 Tenn.	E-14	4/5	Villegas	2			
ENG6 Tenn.	E-15	4/5	Dowdy	2			
ENG6 ODF	E-133	4/5	Eberlein/Shopes	2			
6. Control Operations/Work Assignments:							
Mop-up control lines and around structures approx. 200 feet inside fire perimeter and mitigate remaining hazards and concerns.							
7. Special Instructions:							
Utilize field Maps to capture line locations and suppression repair needs							
Coordinate closely with adjacent divisions, keep OSC informed and maintain a positive public presence. Relay needs for next day’s shift to Planning Ops by 1300.							
Remove trash from lines and backhaul unneeded supplies.							
8. Division/Group Communication Summary							
Function	Channel	RX Frequency N/W	RX Tone/NAC	TX Frequency N/W	TX Tone/NAC	Radio Type	Mode
Command	Command	151.2200	136.5000	159.3450	131.8000	VHF	N
Tactical Div/Group	VTAC 12	154.4525	156.7000	154.4525	156.7000	VHF	N
FD/VFD Tactical	Events Delta 2	800Mhz		800Mhz		Viper	T
Air Guard	Air Guard	168.6250	None	168.6250	110.9000	VHF	N
Air to Ground	A-G Primary	171.5750	131.8000	171.5750	131.8000	VHF	N
Air to Ground	A-G Secondary	172.2750	131.8000	172.2750	131.8000	VHF	N
Tactical Medivac Helo	Events Delta 4	800Mhz		800Mhz		Viper	T
9. Prepared by (Resource Unit Leader) Eve Ciotti (t)			Approved by (Plans Section Chief) Don Watson		Date: 4/2/25		Time: 1900

<b>INCIDENT RADIO COMMUNICATIONS PLAN</b>			1. Incident Name <b>Black Cove Complex</b>		2. Date/ Time Prepared <b>4/2/2025 13:45:00 PM</b>		3. Operational Period Date/Time <b>Day - April 3, 2025</b>	
<b>4. Basic Radio Channel Utilization</b> <b>Mode: W=Wideband, N=Narrowband, D=Digital, M=Mixed, T=Trunked</b>								
Radio Type	Channel	Function	Frequency		Tone	Mode	Assignment	Remarks
VHF	TAC-1	Tactical	RX:	151.4000	136.5	N	Div- Alpha/Bravo	Tactical Operations
			TX:	151.4000	136.5			
VHF	TAC-2	Tactical	RX:	151.3100	136.5	N	Div- Charlie/Delta	Tactical Operations
			TX:	151.3100	136.5			
VHF	TAC-3	Tactical	RX:	151.2650	136.5	N	Div- Echo	Tactical Operations
			TX:	151.2650	136.5			
VHF	VCALL 10	Tactical	RX:	155.7525	156.7	N	Div- Foxtrot	Tactical Operations
			TX:	155.7525	156.7			
VHF	VTAC 11	Tactical	RX:	151.1375	156.7	N	Div- Mike	Tactical Operations
			TX:	151.1375	156.7			
VHF	VTAC 12	Tactical	RX:	154.4525	156.7	N	Div- November/Oscar/Papa	Tactical Operations
			TX:	154.4525	156.7			
VHF	VTAC 13	Tactical	RX:	158.7375	156.7	N	Spare	
			TX:	158.7375	156.7			
VHF	VTAC 14	Tactical	RX:	159.4725	156.7	N	Spare	
			TX:	159.4725	156.7			
VHF	VFIRE 25	Tactical	RX:	154.2875	156.7	N	Spare	
			TX:	154.2875	156.7			
VHF	Command	Command	RX:	151.2200	136.5	N	Operations to All Fires	Operational Communications
			TX:	159.3450	131.8			
VHF	A-G Primary	Air to Ground	RX:	171.5750	131.8	N	A-G Primary	Air to Ground Communications
			TX:	171.5750	131.8			
VHF	A-G Secondary	Air to Ground	RX:	172.2750	131.8	N	A-G Secondary	Air to Ground Communications
			TX:	172.2750	131.8			
			RX:					
			TX:					
VHF	Air Guard	Air Guard	RX:	168.6250	None	N	USFS Air Guard Channel	
			TX:	168.6250	110.9			
5. Prepared by (Communications Unit) Jimmy Meadows COML								

AIR OPERATIONS SUMMARY 220		Prepared By: Efraim Garcia		Prepared: 04/02/25		Based on 550 datum	
1. INCIDENT NAME: Black Cove Complex		2. OPERATIONAL PERIOD 4/03/25		START TIME: 0900	END TIME: 2000	SUNRISE: 0713	SUNSET: 1950

<p><b>3. REMARKS:</b> (Safety Notes, Hazards, etc.)</p> <p>Rutherford County Airport, (KFQD)    35 25.69 X 81 56.11  110 Marchman Field Drive  Rutherfordton NC 28139</p> <p>Costs to: <a href="mailto:ncfs.imt.finanace@ncagr.gov">ncfs.imt.finanace@ncagr.gov</a>  cc: <a href="mailto:mkerrigan1@verizon.net">mkerrigan1@verizon.net</a></p>	<p><b>4. READY ALERT AIRCRAFT:</b></p>	<p><b>5. TFR</b></p> <p><b><u>No TFR over the incident</u></b></p>
---	--	--

6. PERSONNEL	NAME	PHONE #	7. FREQUENCIES	AM	FM	8A. FIXED-WING Ordering
AOBD	Mike Kerrigan	716-957-4705				AIRTANKERS/LEAD PLANES/SEATS: Order Via ATGS /OPS
						8B. Aerial Supervision / Personnel / Location Rutherford Helibase out of KFQD
			A/G Primary		171.5750 Tx 171.5750 Rx Tone 131.8	AIR ATTACK Platforms: None Assigned Order via Ashville NC-ICC
H47KT	Dominic Leal	541-219-1984	A/G Secondary		172.2750 Tx 172.2750 Rx Tone 131.8	

## 9. HELICOPTERS: (Order through ATGS or Operations)

[illegible]

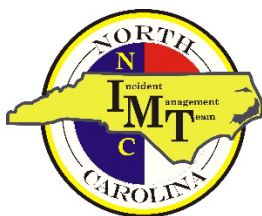
## MEDICAL PLAN (ICS 206)

<b>1. Incident Name:</b> Black Cove Complex		<b>2. Operational Period:</b> Date From: 04/03/2025 Date To: 08:00 Time From: 04/04/2025 Time To: 08:00					
<b>3. Medical Aid Stations:</b>							
Name	Location	Contact Number(s)/Frequency	Paramedics on Site?				
Medical Station	Tryon Equestrian Center Staging Area	Command	<input checked="" type="checkbox"/> Yes <input type="checkbox"/> No				
			<input type="checkbox"/> Yes <input type="checkbox"/> No				
			<input type="checkbox"/> Yes <input type="checkbox"/> No				
			<input type="checkbox"/> Yes <input type="checkbox"/> No				
			<input type="checkbox"/> Yes <input type="checkbox"/> No				
			<input type="checkbox"/> Yes <input type="checkbox"/> No				
<b>4. Transportation (indicate air or ground):</b>							
Ambulance Service	Location	Contact Number(s)/Frequency	Level of Service				
Cabarrus County EMS 941	Div A/B - Big Hungry Rd	Command	<input checked="" type="checkbox"/> ALS <input type="checkbox"/> BLS				
Union County EMS Med-75	Div D/E/F/M - Saluda Exit 59 / Medical Unit Stg (Night)	Command	<input checked="" type="checkbox"/> ALS <input type="checkbox"/> BLS				
Iredell County EMS-438	Div N/O/P - Silver Creek Baptist Church	Command	<input checked="" type="checkbox"/> ALS <input type="checkbox"/> BLS				
			<input type="checkbox"/> ALS <input type="checkbox"/> BLS				
<b>5. Hospitals:</b>							
Hospital Name	Address, Latitude & Longitude if Helipad	Contact Number(s)/Frequency	Travel Time		Trauma Center	Burn Center	Helipad
			Air	Ground			
Advent Health	101 Hospital Dr Columbus, NC 28722				<input type="checkbox"/> Yes Level: _____	<input type="checkbox"/> Yes <input checked="" type="checkbox"/> No	<input checked="" type="checkbox"/> Yes <input type="checkbox"/> No
Pardee Hospital	800 N Justice St Hendersonville, NC				<input type="checkbox"/> Yes Level: _____	<input type="checkbox"/> Yes <input checked="" type="checkbox"/> No	<input checked="" type="checkbox"/> Yes <input type="checkbox"/> No
Mission Hospital	509 Biltmore Ave Asheville, NC				<input checked="" type="checkbox"/> Yes Level: <u>2</u>	<input type="checkbox"/> Yes <input checked="" type="checkbox"/> No	<input checked="" type="checkbox"/> Yes <input type="checkbox"/> No
Spartanburg Regional Health	101 E Wood St Spartanburn, SC				<input checked="" type="checkbox"/> Yes Level: <u>1</u>	<input type="checkbox"/> Yes <input checked="" type="checkbox"/> No	<input checked="" type="checkbox"/> Yes <input type="checkbox"/> No
Atrium Health Wake Forest Ba	1 Medical Center Dr Winston-Salem, NC	Burn Center Acces 336-716-7654	58		<input checked="" type="checkbox"/> Yes Level: <u>1</u>	<input checked="" type="checkbox"/> Yes <input type="checkbox"/> No	<input checked="" type="checkbox"/> Yes <input type="checkbox"/> No
<b>6. Special Medical Emergency Procedures:</b> <ul style="list-style-type: none"> <li>• Provide medical attention as quickly as possible and establish an Incident Within Incident IC, (IWI IC).</li> <li>• IWI IC will call 9-1-1 or EMS direct on Polk EM (800).</li> <li>• Report all accidents/injuries to supervisor immediately.</li> <li>• If needed, transport patient to road accessible by ambulance.</li> <li>• DO NOT use the patients name or their call sign over the radio.</li> <li>• Use 214 to document the incident after the incident has stabilized</li> </ul>							
<input checked="" type="checkbox"/> Check box if aviation assets are utilized for rescue. If assets are used, coordinate with Air Operations.							
<b>7. Prepared by (Medical Unit Leader):</b> Name: <u>Douglas Powell</u> Signature: <u>Douglas R. Powell</u> <small>Digitally signed by Douglas R. Powell Date: 2025.04.02 16:52:38 -0400</small>							
<b>8. Approved by (Safety Officer):</b> Name: <u>Robbie Perry</u> Signature: <u>Robert P Perry</u> <small>Digitally signed by Robert P Perry Date: 2025.04.02 17:26:33 -0400</small>							
ICS 206		IAP Page <u>1 of 2</u>		Date/Time: <u>04/03/2025 17:30</u>			

## MEDICAL PLAN (ICS 206)

<b>1. Incident Name:</b> Black Cove Complex		<b>2. Operational Period:</b> Date From: 04/03/2025 Date To: 08:00 Time From: 04/04/2025 Time To: 08:00					
<b>3. Medical Aid Stations:</b>							
Name	Location	Contact Number(s)/Frequency	Paramedics on Site?				
Medical Station	Tryon Equestrian Center Staging Area	336-242-4920	<input checked="" type="checkbox"/> Yes <input type="checkbox"/> No				
			<input type="checkbox"/> Yes <input type="checkbox"/> No				
			<input type="checkbox"/> Yes <input type="checkbox"/> No				
			<input type="checkbox"/> Yes <input type="checkbox"/> No				
			<input type="checkbox"/> Yes <input type="checkbox"/> No				
			<input type="checkbox"/> Yes <input type="checkbox"/> No				
<b>4. Transportation (indicate air or ground):</b>							
Ambulance Service	Location	Contact Number(s)/Frequency	Level of Service				
Regional-One Air	Spartanburg, SC	866-682-7747	<input checked="" type="checkbox"/> ALS <input type="checkbox"/> BLS				
Mountain Air Medical Air	Asheville, NC	828-213-0900	<input checked="" type="checkbox"/> ALS <input type="checkbox"/> BLS				
			<input type="checkbox"/> ALS <input type="checkbox"/> BLS				
			<input type="checkbox"/> ALS <input type="checkbox"/> BLS				
<b>5. Hospitals:</b>							
Hospital Name	Address, Latitude & Longitude if Helipad	Contact Number(s)/Frequency	Travel Time		Trauma Center	Burn Center	Helipad
			Air	Ground			
Advent Health	101 Hospital Dr Columbus, NC 28722				<input type="checkbox"/> Yes Level: _____	<input type="checkbox"/> Yes <input checked="" type="checkbox"/> No	<input checked="" type="checkbox"/> Yes <input type="checkbox"/> No
Pardee Hospital	800 N Justice St Hendersonville, NC				<input type="checkbox"/> Yes Level: _____	<input type="checkbox"/> Yes <input checked="" type="checkbox"/> No	<input checked="" type="checkbox"/> Yes <input type="checkbox"/> No
Mission Hospital	509 Biltmore Ave Asheville, NC				<input checked="" type="checkbox"/> Yes Level: <u>2</u>	<input type="checkbox"/> Yes <input checked="" type="checkbox"/> No	<input checked="" type="checkbox"/> Yes <input type="checkbox"/> No
Spartanburg Regional Health	101 E Wood St Spartanburg, SC				<input checked="" type="checkbox"/> Yes Level: <u>1</u>	<input type="checkbox"/> Yes <input checked="" type="checkbox"/> No	<input checked="" type="checkbox"/> Yes <input type="checkbox"/> No
Atrium Health Wake Forest Ba	1 Medical Center Dr Winston-Salem, NC	Burn Center Acces	58		<input checked="" type="checkbox"/> Yes Level: <u>1</u>	<input checked="" type="checkbox"/> Yes <input type="checkbox"/> No	<input checked="" type="checkbox"/> Yes <input type="checkbox"/> No
<b>6. Special Medical Emergency Procedures:</b>							
<ul style="list-style-type: none"> <li>Provide medical attention as quickly as possible and establish an Incident Within Incident IC, (IWI IC).</li> <li>IWI IC will call 9-1-1 or EMS direct on Polk EM (800).</li> <li>Report all accidents/injuries to supervisor immediately.</li> <li>If needed, transport patient to road accessible by ambulance.</li> <li>DO NOT use the patients name or their call sign over the radio.</li> <li>Use 214 to document the incident after the incident has stabilized</li> </ul>							
<input checked="" type="checkbox"/> Check box if aviation assets are utilized for rescue. If assets are used, coordinate with Air Operations.							
<b>7. Prepared by (Medical Unit Leader):</b> Name: <u>Douglas Powell</u> Signature: <u>Douglas R. Powell</u> <small style="float: right;">Digitally signed by Douglas R. Powell Date: 2025.04.02 16:52:56 -0400</small>							
<b>8. Approved by (Safety Officer):</b> Name: <u>Robbie Perry</u> Signature: _____							
ICS 206		IAP Page <u>2</u> of <u>2</u>		Date/Time: <u>04/03/2025 17:30</u>			





## **BLACK COVE COMPLEX INCIDENT WITHIN AN INCIDENT (IWI) IAP PROCEDURES FOR OPERATIONAL RESOURCES**

In the event of a medical emergency or other emergency that would be considered an incident within an incident the following procedures will be followed:

1. Secure the scene and victim to prevent further injury and provide emergency medical treatment (first aid.)
2. Establish IWI IC. This is usually someone who can assume command and is not rendering treatment to the victim. This IWI IC will remain in command until the IWI is considered complete.
3. IWI IC will transmit via radio to the incident ICP that there is an emergency. The transmission will begin with "MAYDAY MAYDAY MAYDAY." Once this transmission has been made, all radio traffic on the command frequency will cease other than those who are communicating about the IWI. **In the event that the Communications Unit is unable to be raised on the command channel, IWI IC will contact the Operations Section Chief to get assistance as soon as possible to the injured party.**
4. The IWI IC will communicate details of the emergency using the Medical Plan (ICS 206 WF) 8-line report located in the back of the IAP.
5. The Communications Unit will notify the Safety Officer of the IWI. The Communications Unit will also contact local EMS via 911 and provide EMS with accurate information such as type of injury/accident, location, etc.
6. The Safety Officer will at that time notify the Command and General Staff of the IWI via the GroupMe App.
7. Command and General Staff will come together in the Communications Unit to gather information until the IWI is complete.

# MEDICAL PLAN (ICS 206 WF)

Controlled Unclassified Information//Basic

## Medical Incident Report

**FOR A NON-EMERGENCY INCIDENT, WORK THROUGH CHAIN OF COMMAND TO REPORT AND TRANSPORT INJURED PERSONNEL AS NECESSARY.**

**FOR A MEDICAL EMERGENCY: IDENTIFY ON SCENE INCIDENT COMMANDER BY NAME AND POSITION AND ANNOUNCE "MEDICAL EMERGENCY" TO INITIATE RESPONSE FROM IMT COMMUNICATIONS/DISPATCH.**

Use the following items to communicate situation to communications/dispatch.

**1. CONTACT COMMUNICATIONS / DISPATCH (Verify correct frequency prior to starting report)**

Ex: "Communications, Div. Alpha. Stand-by for Emergency Traffic."

**2. INCIDENT STATUS: Provide incident summary (including number of patients) and command structure.**

Ex: "Communications, I have a Red priority patient, unconscious, struck by a falling tree. Requesting air ambulance to Forest Road 1 at (Lat./Long.) This will be the Trout Meadow Medical, IC is TFLD Jones. EMT Smith is providing medical care."

Severity of Emergency / Transport Priority	<input type="checkbox"/> RED / PRIORITY 1 Life or limb threatening injury or illness. Evacuation need is IMMEDIATE Ex: Unconscious, difficulty breathing, bleeding severely, 2° – 3° burns more than 4 palm sizes, heat stroke, disoriented. <input type="checkbox"/> YELLOW / PRIORITY 2 Serious Injury or illness. Evacuation may be DELAYED if necessary. Ex: Significant trauma, unable to walk, 2° – 3° burns not more than 1-3 palm sizes. <input type="checkbox"/> GREEN / PRIORITY 3 Minor Injury or illness. Non-Emergency transport Ex: Sprains, strains, minor heat-related illness.	
Nature of Injury or Illness & Mechanism of Injury		Brief Summary of Injury or Illness (Ex: Unconscious, Struck by Falling Tree)
Transport Request		Air Ambulance / Short Haul/Hoist Ground Ambulance / Other
Patient Location		Descriptive Location & Lat. / Long. (WGS84)
Incident Name		Geographic Name + "Medical" (Ex: Trout Meadow Medical)
On-Scene Incident Commander		Name of on-scene IC of Incident within an Incident (Ex: TFLD Jones)
Patient Care		Name of Care Provider (Ex: EMT Smith)

**3. INITIAL PATIENT ASSESSMENT: Complete this section for each patient as applicable (start with the most severe patient)**

Patient Assessment: See IRPG page 106

Treatment:

**4. TRANSPORT PLAN:**

Evacuation Location (if different): (Descriptive Location (drop point, intersection, etc.) or Lat. / Long.) Patient's ETA to Evacuation Location:

Helispot / Extraction Site Size and Hazards:

**5. ADDITIONAL RESOURCES / EQUIPMENT NEEDS:**

Example: Paramedic/EMT, Crews, Immobilization Devices, AED, Oxygen, Trauma Bag, IV/Fluid(s), Splints, Rope rescue, Wheeled litter, HAZMAT, Extrication

**6. COMMUNICATIONS: Identify State Air/Ground EMS Frequencies and Hospital Contacts as applicable**

Function	Channel Name/Number	Receive (RX)	Tone/NAC *	Transmit (TX)	Tone/NAC *
COMMAND					
AIR-TO-GRND					
TACTICAL					

**7. CONTINGENCY: Considerations: If primary options fail, what actions can be implemented in conjunction with primary evacuation method? Be thinking ahead.**

**8. ADDITIONAL INFORMATION: Updates/Changes, etc.**

**REMEMBER:** Confirm ETA's of resources ordered. Act according to your level of training. Be Alert. Keep Calm. Think Clearly. Act Decisively.

# FINANCE

Fiori Time Code G, T, F 1505

[ncfs.imt.finance@ncagr.gov](mailto:ncfs.imt.finance@ncagr.gov)

Submit legible copy of CTR/Shift Ticket daily, email or paper copy acceptable.

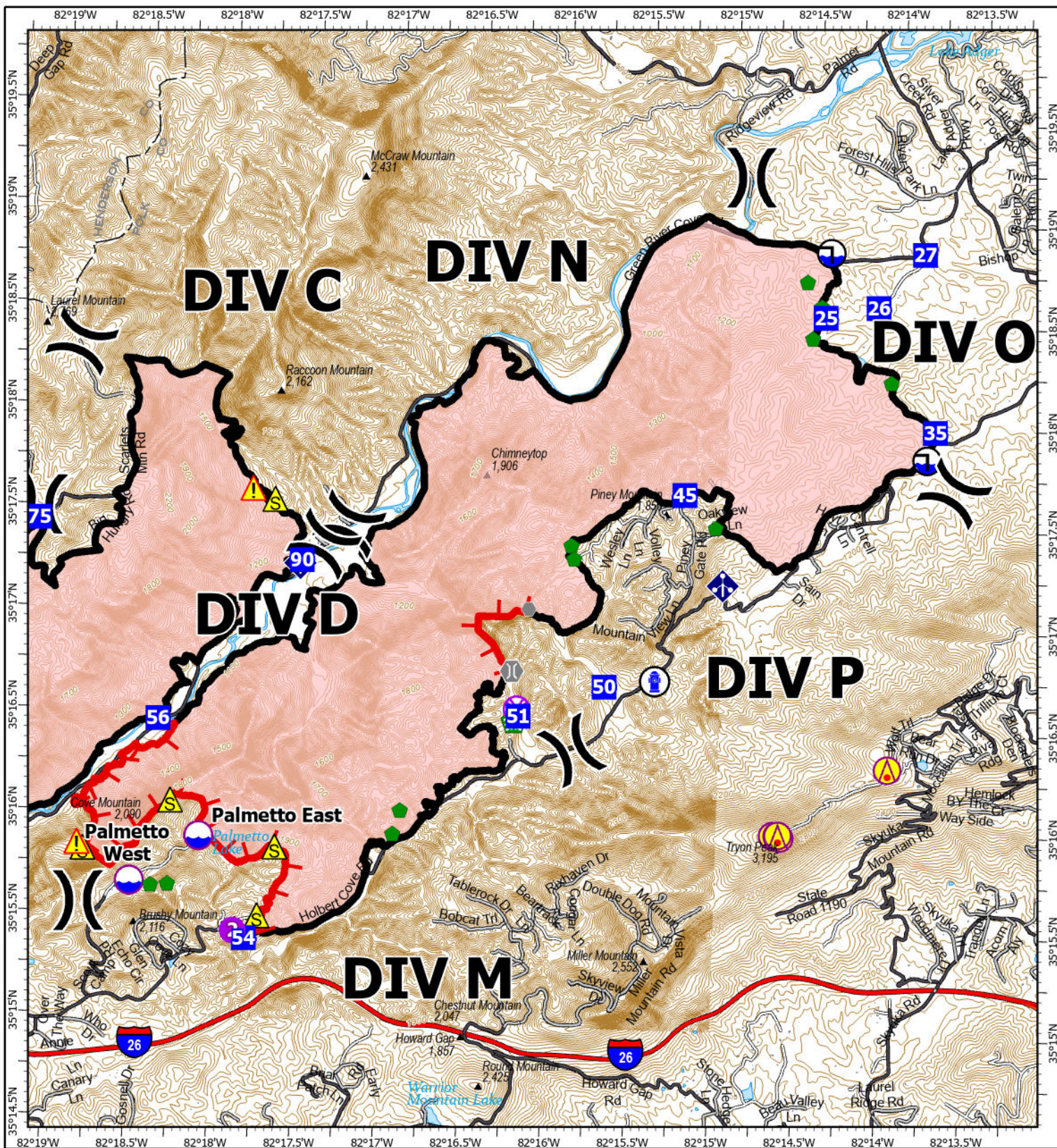
- Include Full Legal Name
- Resource #
- Must have Supervisor signature
- Use actual hours of equipment use on the shift tickets

Please email or bring the following to FINANCE after you check in:

- Agreement or contract
- Equipment inspection
- Roster/manifest
- Casual Hire Form







# IAP

Deep Woods  
NC-NCS-250021  
4/3/2025

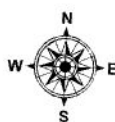
3,976 acres at 04/2/2025 @ 18:38 hrs

0 0.25 0.5 1

Miles

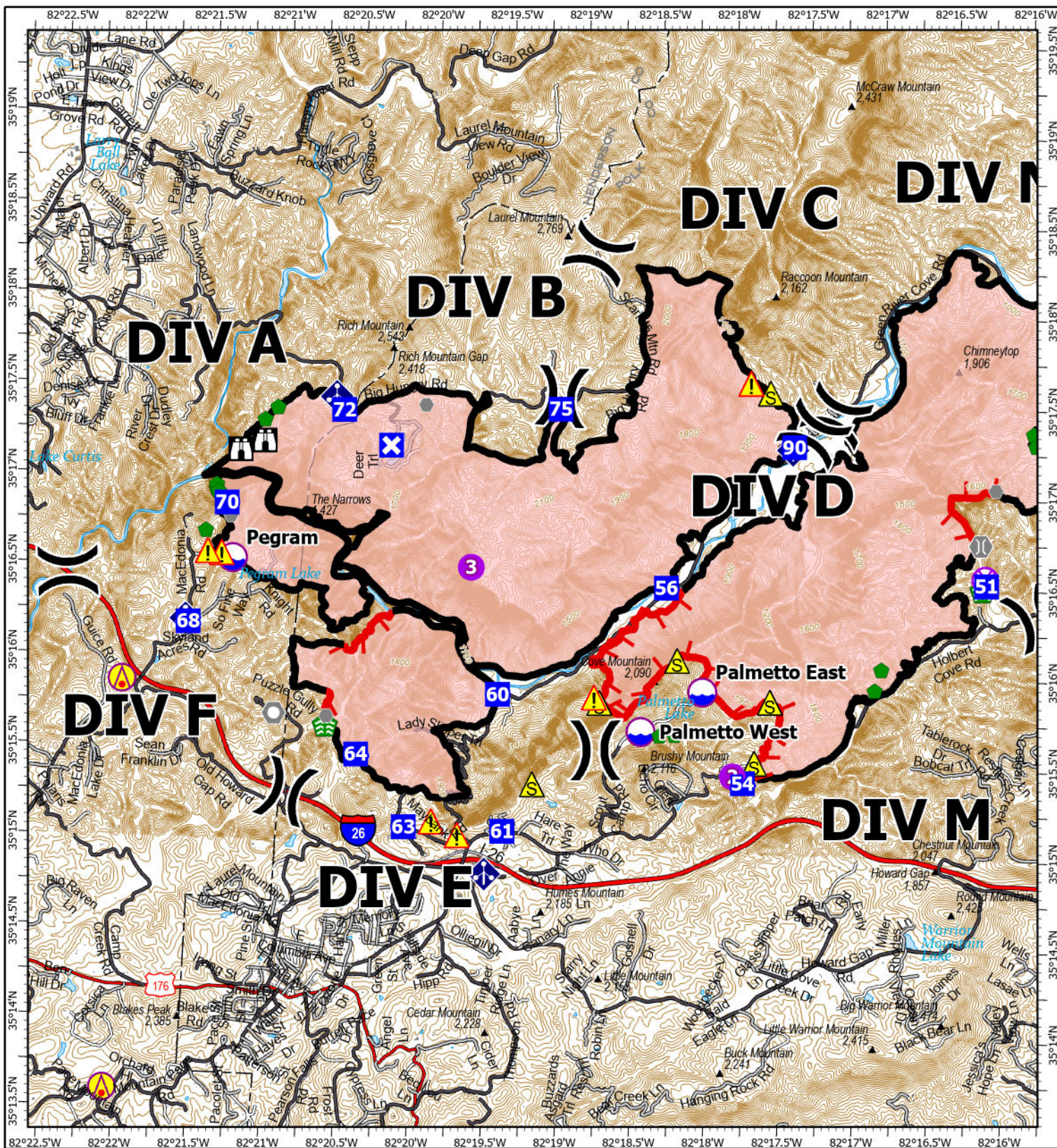
1:48,000 | NCSFS | 4/2/2025 1852

North American 1983 Datum, LatLong Grid



- Wildfire Perimeter
- Contained Fire Edge
- Uncontained Fire Edge
- Gap; Summit
- Division Break
- Safety Zone
- Hazard
- Aerial Hazard
- Helispot
- UAS Launch and Recovery
- Drop Point
- Dip Site
- Draft Site
- Hydrant
- Mobile Weather Unit
- Other
- Bridge
- Stream Crossing
- Repair Point
- Structure FEMA





# IAP

Black Cove  
NC-NCS-250019  
4/3/2025

3,502 acres at 03/30/2025 @ 16:15 hrs

0 0.25 0.5 1

Miles

1:54,000 | NCSFS | 4/2/2025 1853

North American 1983 Datum, LatLong Grid

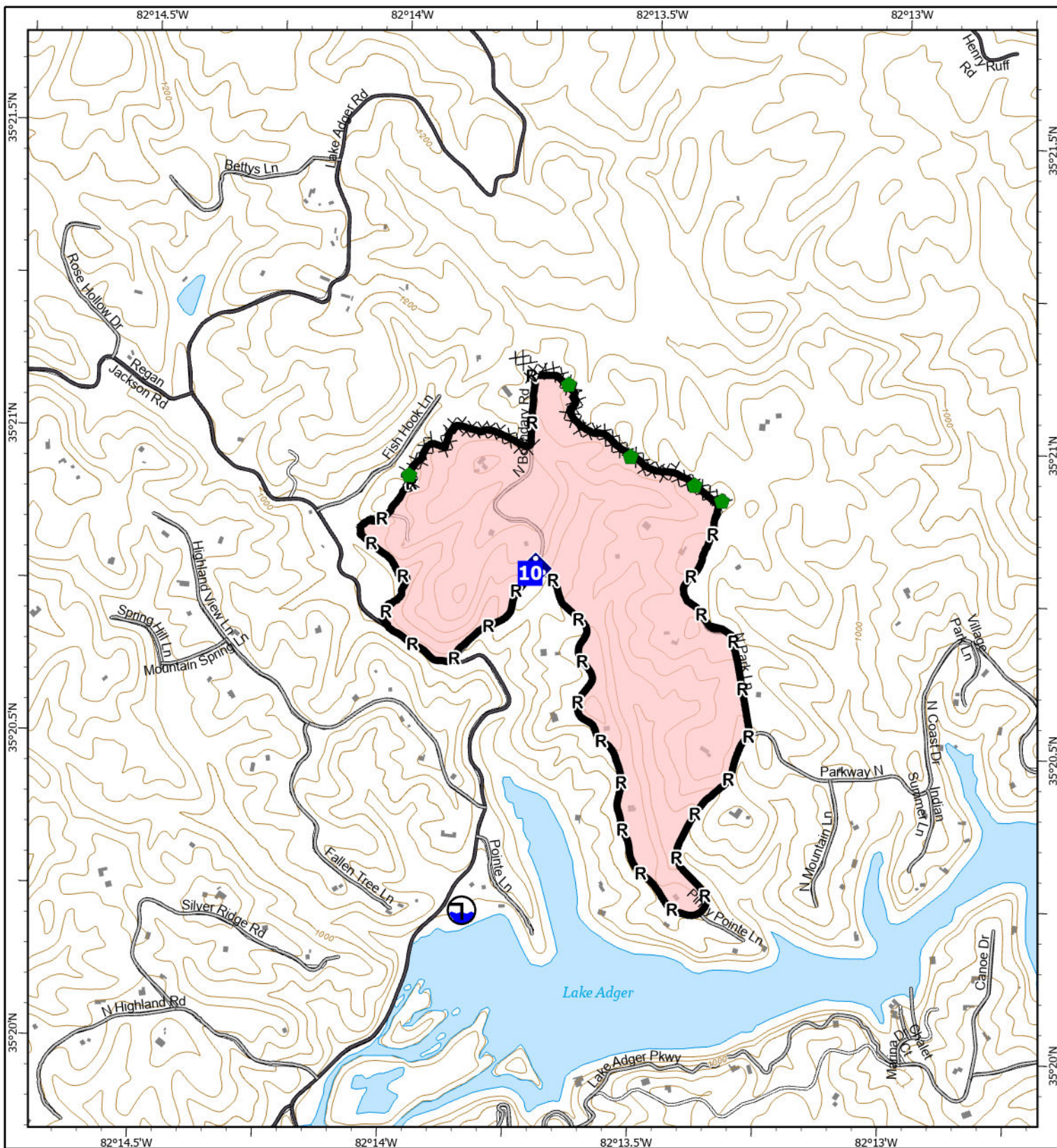


- Wildfire Perimeter
- Contained Fire Edge
- Uncontained Fire Edge
- Gap; Summit
- Division Break
- Safety Zone
- Hazard

- Aerial Hazard
- Helispot
- UAS Launch and Recovery
- Lookout
- Drop Point
- Closure
- Dip Site

- Mobile Weather Unit
- Other
- Landmark
- Bridge
- Stream Crossing
- Repair Point
- Structure FEMA





# IAP

## Fish Hook

### NC-NCS-250024

#### 4/3/2025

199 acres at 03/22/2025 @ 11:30 hrs

0 0.25 0.5

Miles

1:16,000 | NCS | 4/2/2025 1853

North American 1983 Datum, LatLong Grid



- Wildfire Perimeter
- Contained Fire Edge
- Drop Point
- Draft Site
- Mobile Weather Unit

- Repair Point
- Completed Dozer Line
- Completed Road as Line
- Structure FEMA



## **TENTATIVE RELEASE**

**BLACK COVE US-NC-NCS-250019**

**04/03/2025**

### **CREWS**

C-7	1000	(CR2I)	CR2I - ARDEN SOLUTIONS, INC NCC 12A
C-8	1030	(CREP)	CR2I - ARDEN SOLUTIONS, INC NCC 12B

### **EQUIPMENT**

E-144	1100	(ENG6)	PATRICK ENVIRONMENTAL INC - ENG6
E-2095	1500	(PUP3)	ZOELLERS (O-2026) PUP3
E-61	0900	(PUP2)	CHAMBLEE (O-73) - PP-9581
E-23	1200	(ENG6)	SC - ENG6 - 10501SG

### **OVERHEAD**

O-149	1230	(DIVS)	AMUNDSON, PAUL
O-145	1230	(HEQB)	AYERS, TODD
O-119	1245	(TFLD)	BLACK, RAYMOND
O-126	1245	(TFLD)	BREWER, JONATHAN
O-59	1300	(DIVS)	BROUWER, PAUL
O-127	1300	(TFLD)	CHARPENTIER, DERRICK
O-99	1315	(DIVS)	DUDA, BENJAMIN
O-97	1315	(DIVS)	HASKVITZ, JOHN
O-150	1330	(DIVS)	KEYSE, DARIN
O-189	1330	(DIVS)	KIEHN, ERIC
O-152	1345	(TFLD)	LANOUE, CHARLES
O-144	1345	(HEQB)	MASON, DICKESN
O-120	1400	(TFLD)	MOORE, DANIEL
O-96	1400	(DIVS)	RODRIQUEZ, JASON
O-2026	1425	(GISS)	ZOELLERS, SARAH
O-101	0600	(HMGB)	VOELTNER, DANIEL

**TENTATIVE RELEASE**  
**BLACK COVE US-NC-NCS-250019**

**04/03/2025**

O-108	0800	(ASGS)	GARCIA, EFRAIM
O-109	0800	(HEBM)	NOBLES, JOHN
O-73	0900	(GISS)	CHAMBLEE, AARON
O-106	1300	(HECM)	BRIDENDOLPH, JUSTIN
O-105	1300	(HECM)	HUNTER, JESSICA
O-193	1400	(HECM)	PUMMEL, JAMES
O-179	1700	(DIVS)	BINGHAM, BEN
O-20	1700	(RCDM)	BRADLEY, KRAMMER
O-14	2000	(SOFC)	CAROTHERS, COUGAN

**04/04/2025**

**OVERHEAD**

O-100	0600	(DIVS)	BROCK, JOSHUA
O-123	0600	(TFLD)	CEARNS, MICHAEL
O-121	0600	(TFLD)	CHALMERS, ROBERT
O-177	0600	(MEDL)	HOLBROOK, JEFF
O-148	0600	(DIVS)	KINGSBURY, CODY
O-51	0800	(FDUL)	EASON, DANIEL

**04/05/2025**

**EQUIPMENT**

E-117	0600	(ENG6)	RUDOLF (O-37) & BECKTOLD (O-38) - PP-
-------	------	--------	---------------------------------------

**OVERHEAD**

O-107	0800	(AOBD)	KERRIGAN, MICHAEL
-------	------	--------	-------------------



## TENTATIVE RELEASE

BLACK COVE US-NC-NCS-250019

04/06/2025

### OVERHEAD

O-33	0000	(ENGB)	MOODENBAUGH, TYLER
O-29	0600	(FFT1)	ANDERSON, TROY
O-47	0600	(ENGB)	ATCHISON, NATHAN
O-38	0600	(ENGB)	BECKTOLD, BENJAMIN
O-46	0600	(AREP)	BOND, NEAL
O-34	0600	(FFT1)	BULLOCK, ROBBY
O-24	0600	(ENGB)	CLINE, BENAIAH
O-44	0600	(ENGB)	CONE, CODY
O-49	0600	(FFT1)	DOAN, ISABELLE
O-42	0600	(ENGB)	FELDMAN, JAY
O-43	0600	(ENGB)	KOONCE, KYLE
O-28	0600	(ENGB)	RICKS, DAYTON
O-45	0600	(ENGB)	ROSE, ZACHERY
O-37	0600	(ENGB)	RUDOLF, HANS
O-41	0600	(ENGB)	SORWEIDE, COLTON
O-36	0600	(FFT1)	TRYON, JUSTIN
O-48	0600	(ENGB)	VALENCIA, CODY

## ACTIVITY LOG (ICS 214)

[illegible]

## MEDICAL PLAN (ICS 206)

<b>1. Incident Name:</b> Black Cove Complex		<b>2. Operational Period:</b> Date From: 04/03/2025 Date To: 08:00 Time From: 04/04/2025 Time To: 08:00					
<b>3. Medical Aid Stations:</b>							
Name	Location	Contact Number(s)/Frequency	Paramedics on Site?				
Medical Station	Tryon Equestrian Center Staging Area	336-242-4920	<input checked="" type="checkbox"/> Yes <input type="checkbox"/> No				
			<input type="checkbox"/> Yes <input type="checkbox"/> No				
			<input type="checkbox"/> Yes <input type="checkbox"/> No				
			<input type="checkbox"/> Yes <input type="checkbox"/> No				
			<input type="checkbox"/> Yes <input type="checkbox"/> No				
			<input type="checkbox"/> Yes <input type="checkbox"/> No				
<b>4. Transportation (indicate air or ground):</b>							
Ambulance Service	Location	Contact Number(s)/Frequency	Level of Service				
Regional-One Air	Spartanburg, SC	866-682-7747	<input checked="" type="checkbox"/> ALS <input type="checkbox"/> BLS				
Mountain Air Medical Air	Asheville, NC	828-213-0900	<input checked="" type="checkbox"/> ALS <input type="checkbox"/> BLS				
			<input type="checkbox"/> ALS <input type="checkbox"/> BLS				
			<input type="checkbox"/> ALS <input type="checkbox"/> BLS				
<b>5. Hospitals:</b>							
Hospital Name	Address, Latitude & Longitude if Helipad	Contact Number(s)/Frequency	Travel Time		Trauma Center	Burn Center	Helipad
			Air	Ground			
Advent Health	101 Hospital Dr Columbus, NC 28722				<input type="checkbox"/> Yes Level: _____	<input type="checkbox"/> Yes <input checked="" type="checkbox"/> No	<input checked="" type="checkbox"/> Yes <input type="checkbox"/> No
Pardee Hospital	800 N Justice St Hendersonville, NC				<input type="checkbox"/> Yes Level: _____	<input type="checkbox"/> Yes <input checked="" type="checkbox"/> No	<input checked="" type="checkbox"/> Yes <input type="checkbox"/> No
Mission Hospital	509 Biltmore Ave Asheville, NC				<input checked="" type="checkbox"/> Yes Level: <u>2</u>	<input type="checkbox"/> Yes <input checked="" type="checkbox"/> No	<input checked="" type="checkbox"/> Yes <input type="checkbox"/> No
Spartanburg Regional Health	101 E Wood St Spartanburn, SC				<input checked="" type="checkbox"/> Yes Level: <u>1</u>	<input type="checkbox"/> Yes <input checked="" type="checkbox"/> No	<input checked="" type="checkbox"/> Yes <input type="checkbox"/> No
Atrium Health Wake Forest Ba	1 Medical Center Dr Winston-Salem, NC	Burn Center Acces	58		<input checked="" type="checkbox"/> Yes Level: <u>1</u>	<input checked="" type="checkbox"/> Yes <input type="checkbox"/> No	<input checked="" type="checkbox"/> Yes <input type="checkbox"/> No
<b>6. Special Medical Emergency Procedures:</b> <ul style="list-style-type: none"> <li>• Provide medical attention as quickly as possible and establish an Incident Within Incident IC, (IWI IC).</li> <li>• IWI IC will call 9-1-1 or EMS direct on Polk EM (800).</li> <li>• Report all accidents/injuries to supervisor immediately.</li> <li>• If needed, transport patient to road accessible by ambulance.</li> <li>• DO NOT use the patients name or their call sign over the radio.</li> <li>• Use 214 to document the incident after the incident has stabilized</li> </ul>							
<input checked="" type="checkbox"/> Check box if aviation assets are utilized for rescue. If assets are used, coordinate with Air Operations.							
<b>7. Prepared by (Medical Unit Leader):</b> Name: <u>Douglas Powell</u> Signature: <u>Douglas R. Powell</u> <small>Digitally signed by Douglas R. Powell Date: 2025.04.02 16:32:56 -0400</small>							
<b>8. Approved by (Safety Officer):</b> Name: <u>Robbie Perry</u> Signature: _____							
ICS 206		IAP Page <u>2 of 2</u>		Date/Time: <u>04/03/2025 17:30</u>			