

# Black Cove Complex

## Incident Action Plan

Friday, March 21, 2025

Day Shift 0800 - 2000

Night Shift 2000 - 0800



NCDA&CS



Fire #: NC-NCS-250019 Black Cove  
Fire #: NC-NCS-250021 Deep Woods

## INCIDENT OBJECTIVES (ICS 202)

<b>INCIDENT OBJECTIVES</b>	1. Incident Name <b>Black Cove Complex</b>	2. Date Prepared <b>3/20/2025</b>	3. Time Prepared <b>2000</b>
4. Operational Period (DATE/TIME)      3/21/2025 Day Shift 0800-2000			
5. General Control Objectives for The Incident (Include Alternatives):			
<b><u>Management Objectives</u></b>			
<ol style="list-style-type: none"> <li>1. Provide for firefighter safety by following 10 Standard Fire Orders, 18 Watch Out Situations and maintaining 2:1 work to rest ratio.</li> <li>2. Protect private property and other identified areas of risk by utilizing the appropriate firefighting strategies.</li> <li>3. Ensure unified information releases and communications of fire status to all agencies and the public.</li> </ol>			
<b><u>Control Objectives</u>    For Black Cove Fire</b>			
Keep the fire: east of Scarlet Mountain, north of Green River Cove Road, west of Raccoon Mountain, east of Pulliam Creek.			
<b>For Deep Woods Fire</b>			
Keep the fire: east of Little Cove Creek, west of Silver Creek, north of Holbert Cove, south of Green River Cove Road.			
6. Weather Forecast For Period			
<b>See Attached Weather Forecast.</b>			
7. General Safety Message			
<b>See Attached Safety Message.</b>			
<b>8. ATTACHEMENTS (X IF ATTACHED)</b>			
<b>Organizational List – ICS 203</b> <b>Safety Message</b> <b>Fire Weather Forecast</b> <b>Div. Assignment Lists - ICS 204</b> <b>Communications Plan - ICS 205</b> <b>Communications List - ICS 205A</b>		<b>Medical Plan - ICS 206</b> <b>Finance Message</b> <b>8 Line Medical</b> <b>Incident Map</b> <b>Unit Log - ICS 214</b>	
9. Prepared By (Planning Section Chief)		10. Approved By (Incident Commander)	

## HEALTH AND SAFETY MESSAGE

### *SAFETY is YOU & ME*

We are ALL accountable for SAFE behaviors

**INCIDENT:** Black Cove Complex

**DATE:** 3/21/25

**Major Hazards and Risks:** Driving, LCES, Terrain

**Driving** – Drive defensively with lights on at all times and obey posted speed limits. Maintain proper following distance, anticipate oncoming traffic and always fasten your seatbelt. Use emergency lights and high visibility clothing when operating in roadways.

**Terrain**—Steep terrain, rolling rocks and loose footing under leaf litter can contribute to accidents. Use extreme caution when navigating within the fire perimeter.

**LCES** – Must be established and know to **ALL** firefighters **BEFORE** it is needed. Ensure communications are in place based on where you work throughout the operational period.

**BLOWDOWN**- Be aware of recent storm blowdown and trees possibly hung in the air. Jackpot fuels may burn with greater intensity.



- **Lookouts** – Can you see over the vegetation? Where is the fire? If air attack is your lookout, what happens when they leave your space? Does your lookout know your *location*?
- **Communications** – Are you on *the right channel* with your lookout? Do you have extra batteries? Are you scanning the right channels?
- **Escape Routes** – Is there just one path through the *heaths*. Identify the ones that count and flag them. Find more than one...if you can.
- **Safety Zones** – Utilize black area where safe with regards to snags. You might need to create a black area as a last resort so carry some fire makers and identify areas based on fuel type and fire spread,

Incident Safety Officer:

## ORGANIZATION ASSIGNMENT LIST (ICS 203)

<b>1. Incident Name: Black Cove Fire</b>		<b>2. Operational Period:</b>		Date From: 3/21/2025	Date To: 3/22/2025
				Time From: 0700	Time To: 0700
<b>3. Command and General Staff:</b>			<b>7. Operations Section:</b>		
NCFS	Brad Allen / Brian Rogers	Field Ops	Chase Payne		
Fire		Planning Ops			
Safety Officer		<b>a. Branch I</b>			
Liaison Officer	Jason Guidry	Branch Director			
Public Information Officer	Jeremy Waldrop	Division/Group	Alpha / Bravo	Ethan Matherly	
Public Information Officer	E J Dwiggin	Division/Group	Charlie / Delta	Dillon Michael	
		Division/Group	M / N / O / P	Searcy	
<b>4a. Agency Administrators:</b>		Division/Group			
		Division/Group			
		Division/Group			
		<b>b. Branch II</b>			
<b>4b. Agency Representatives:</b>		Branch Director			
NCFS	Michael Cheek	Division/Group			
Polk Co.	Bobby Arledge	Division/Group			
		Division/Group			
		Division/Group			
		Division/Group			
<b>5. Planning Section:</b>		<b>c.</b>			
Chief	Richard Cockerham	Branch Director			
Deputy		Division/Group			
Resources Unit		Division/Group			
Status Check - In		Division/Group			
Situation Unit		Division/Group			
		<b>d.</b>			
GIS Specialist		Branch Director			
		Division/Group			
Field Observer		Division/Group			
Fire Behavior		Division/Group			
IMET		Division/Group			
Demobilization Unit		<b>e. Air Operations Branch</b>			
Documentation Unit		Air Ops Branch Director			
		Helibase Manager			
		Air Tactical Grp Supervisor			
		Air Support Grp Supervisor			
<b>6. Logistics Section:</b>					
Chief	Travis Shidal				
Deputy Chief					
Supply Unit		<b>8. Finance Section:</b>			
Ordering Manager		Chief	Mary Nicholson		
Receiving / Distribution		Deputy			
Ground Support Unit		Procurement Unit			
Equipment Manager		Time Unit			
Facilities Unit		PTRC			
Food Unit		EQTR			
Medical Unit		Cost Unit			
Communications Unit		Computer Spec			
COMT		ITSS			
RADO		BUYL			
Security Manager		BUYM			
<b>9. Prepared by: Name:</b> Richard Cockerham		<b>Position/Title:</b> PSC3		<b>Signature:</b>	
<b>ICS 203</b>		<b>Date Prepared:</b> 3/20/2025		<b>Time Prepared:</b> 2200	

<b>DIVISION ASSIGNMENT LIST</b>		1. Branch		2. Division/Group <b>Alpha / Bravo</b>			
3. Incident Name <b>Black Cove</b>		4. Operational Period Date: <b>3/21/2025</b> Time: <b>0800-200</b>					
5. Operations Personnel							
Operations Chief		<b>Chase Payne</b>		Division/Group Supervisor		<b>Ethan Matherly</b>	
Branch Director				Air Attack Supervisor No.			
6. Resources Assigned this Period							
Strike Team/Task Force/Resource	Leader	Number Persons	Trans. Needed	Drop Off PT./Time	Pick Up PT./Time		
<b>1 X 1 Dozer</b>	<b>Greer</b>	<b>1</b>					
<b>NC Wildlife CR2</b>		<b>9</b>					
<b>NC Wildlife CR2</b>		<b>8</b>					
<b>PatRick CR2</b>		<b>20</b>					
<b>PatRick CR2</b>		<b>20</b>					
7. Control Operations <b>Conitue constructing containment lines.</b> <b>Complete firing operations.</b> <b>Assess structure protection needs.</b> <b>Mop-up 50 feet inside perimeter.</b>							
8. Special Instructions							
9. Division/Group Communication Summary							
Function	Frequency	System	Channel	Function	Frequency	System	Channel
Command	<b>D-1 Tryon Peak</b>			Logistics		King	
						NIFC	
Tactical Div/Group	<b>D-1 TAC 1</b>			Air to Ground		King	
						NIFC	
Prepared by (Resource Unit Ldr.)		Approved by (Planning Sect. Chief) <b>R. Cockerham</b>			Date <b>3/20/2025</b>		Time <b>2100</b>

<b>DIVISION ASSIGNMENT LIST</b>		1. Branch		2. Division/Group <b>Charlie / Delta</b>			
3. Incident Name <b>Black Cove</b>		4. Operational Period Date: <b>3/21/2025</b> Time: <b>0800 - 2000</b>					
5. Operations Personnel							
Operations Chief		<b>Chase Payne</b>		Division/Group Supervisor		<b>Dillon Michael</b>	
Branch Director				Air Attack Supervisor No.			
6. Resources Assigned this Period							
Strike Team/Task Force/Resource	Leader	Number Persons	Trans. Needed	Drop Off PT./Time		Pick Up PT./Time	
<b>BRIDGE -9</b>	<b>Patton</b>	<b>5</b>					
<b>Dupont X 1 Dozer</b>	<b>Gravely</b>	<b>2</b>					
7. Control Operations <b>Conitue constructing containment lines.</b> <b>Complete firing operations.</b> <b>Assess structure protection needs.</b> <b>Mop-up 50 feet inside perimeter.</b>							
8. Special Instructions							
9. Division/Group Communication Summary							
Function	Frequency	System	Channel	Function	Frequency	System	Channel
Command	<b>D- 1 Tryon Peak</b>			Logistics		King	
						NIFC	
Tactical Div/Group	<b>D- 1 TAC 2</b>			Air to Ground		King	
						NIFC	
Prepared by (Resource Unit Ldr.)		Approved by (Planning Sect. Chief)		Date		Time	
		<b>R. Cockerham</b>		<b>3/20/2025</b>		<b>2100</b>	

<b>DIVISION ASSIGNMENT LIST</b>		1. Branch		2. Division/Group <b>M / N / O / P</b>			
3. Incident Name <b>Deep Woods</b>		4. Operational Period Date: <b>3/21/2025</b> Time: <b>0800-2000</b>					
5. Operations Personnel							
Operations Chief		<b>Chase Payne</b>		Division/Group Supervisor		<b>Ryan Searcy/ Jake Martin</b>	
Branch Director				Air Attack Supervisor No.			
6. Resources Assigned this Period							
Strike Team/Task Force/Resource	Leader	Number Persons	Trans. Needed	Drop Off PT./Time	Pick Up PT./Time		
<b>USFS ENG6</b>		<b>2</b>					
<b>USFS ENG6</b>		<b>4</b>					
<b>NCFS ENG6</b>	<b>12-46 Wilson</b>	<b>1</b>					
<b>NCFS ENG6</b>	<b>2-56 Andrews</b>	<b>1</b>					
<b>NCFS ENG6</b>	<b>12-71 Auten</b>	<b>1</b>					
<b>9 X 3 Dozer</b>	<b>Jones</b>	<b>1</b>					
7. Control Operations <b>Conitue constructing containment lines.</b> <b>Complete firing operations.</b> <b>Assess structure protection needs.</b> <b>Mop-up 50 feet inside perimeter.</b>							
8. Special Instructions							
9. Division/Group Communication Summary							
Function	Frequency	System	Channel	Function	Frequency	System	Channel
Command	<b>D - 1 Tryon Peak</b>			Logistics		King	
						NIFC	
Tactical Div/Group	<b>D - 1 TAC 3</b>			Air to Ground		King	
						NIFC	
Prepared by (Resource Unit Ldr.)		Approved by (Planning Sect. Chief) <b>R. Cockerham</b>		Date <b>3/20/2025</b>		Time <b>2130</b>	







## MEDICAL PLAN (ICS 206)

<b>1. Incident Name:</b> Black Cove Complex	<b>2. Operational Period:</b> Date From: 3/21/25 Time From:	Date To: Time To:
---	--	----------------------

3. Medical Aid Stations:			
Name	Location	Contact Number(s)/Frequency	Paramedics on Site?
			<input type="checkbox"/> Yes <input type="checkbox"/> No
			<input type="checkbox"/> Yes <input type="checkbox"/> No
			<input type="checkbox"/> Yes <input type="checkbox"/> No
			<input type="checkbox"/> Yes <input type="checkbox"/> No
			<input type="checkbox"/> Yes <input type="checkbox"/> No
			<input type="checkbox"/> Yes <input type="checkbox"/> No

4. Transportation (indicate air or ground):			
Ambulance Service	Location	Contact Number(s)/Frequency	Level of Service
Polk County EMS	Medic Base		<input checked="" type="checkbox"/> ALS <input type="checkbox"/> BLS
			<input type="checkbox"/> ALS <input type="checkbox"/> BLS
			<input type="checkbox"/> ALS <input type="checkbox"/> BLS
			<input type="checkbox"/> ALS <input type="checkbox"/> BLS

5. Hospitals:							
Hospital Name	Address, Latitude & Longitude if Helipad	Contact Number(s)/Frequency	Travel Time		Trauma Center	Burn Center	Helipad
			Air	Ground			
Advent Health Hospital	101 Hospital Drive Columbus, NC 28722				<input type="checkbox"/> Yes Level: _____	<input type="checkbox"/> Yes <input checked="" type="checkbox"/> No	<input checked="" type="checkbox"/> Yes <input type="checkbox"/> No
Pardee Hospital	800 N. Justice St. Hendersonville, NC				<input type="checkbox"/> Yes Level: _____	<input type="checkbox"/> Yes <input checked="" type="checkbox"/> No	<input checked="" type="checkbox"/> Yes <input type="checkbox"/> No
Mission Hospital	509 Biltmore Ave Asheville, NC				<input checked="" type="checkbox"/> Yes Level: 2	<input checked="" type="checkbox"/> Yes <input type="checkbox"/> No	<input checked="" type="checkbox"/> Yes <input type="checkbox"/> No
					<input type="checkbox"/> Yes Level: _____	<input type="checkbox"/> Yes <input type="checkbox"/> No	<input type="checkbox"/> Yes <input type="checkbox"/> No
					<input type="checkbox"/> Yes Level: _____	<input type="checkbox"/> Yes <input type="checkbox"/> No	<input type="checkbox"/> Yes <input type="checkbox"/> No

<b>6. Special Medical Emergency Procedures:</b>          <input type="checkbox"/> Check box if aviation assets are utilized for rescue. If assets are used, coordinate with Air Operations.
---

<b>7. Prepared by (Medical Unit Leader):</b> Name: _____ Signature: _____
---

<b>8. Approved by (Safety Officer):</b> Name: _____ Signature: _____
--

ICS 206	IAP Page _____	Date/Time: _____
---------	----------------	------------------

# MEDICAL PLAN (8 - LINE)

Controlled Unclassified Information//Basic

## Medical Incident Report

**FOR A NON-EMERGENCY INCIDENT, WORK THROUGH CHAIN OF COMMAND TO REPORT AND TRANSPORT INJURED PERSONNEL AS NECESSARY.**

**FOR A MEDICAL EMERGENCY: IDENTIFY ON SCENE INCIDENT COMMANDER BY NAME AND POSITION AND ANNOUNCE "MEDICAL EMERGENCY" TO INITIATE RESPONSE FROM IMT COMMUNICATIONS/DISPATCH.**

Use the following items to communicate situation to communications/dispatch.

1. CONTACT COMMUNICATIONS / DISPATCH (**Verify correct frequency prior to starting report**)  
*Ex: "Communications, Div. Alpha. Stand-by for Emergency Traffic."*
2. INCIDENT STATUS: *Provide incident summary (including number of patients) and command structure.*  
*Ex: "Communications, I have a Red priority patient, unconscious, struck by a falling tree. Requesting air ambulance to Forest Road 1 at (Lat./Long.) This will be the Trout Meadow Medical, IC is TFLD Jones. EMT Smith is providing medical care."*

Severity of Emergency / Transport Priority	<input type="checkbox"/> <b>RED / PRIORITY 1</b> Life or limb threatening injury or illness. Evacuation need is IMMEDIATE <i>Ex: Unconscious, difficulty breathing, bleeding severely, 2° – 3° burns more than 4 palm sizes, heat stroke, disoriented.</i> <input type="checkbox"/> <b>YELLOW / PRIORITY 2</b> Serious Injury or illness. Evacuation may be DELAYED if necessary. <i>Ex: Significant trauma, unable to walk, 2° – 3° burns not more than 1-3 palm sizes.</i> <input type="checkbox"/> <b>GREEN / PRIORITY 3</b> Minor Injury or illness. Non-Emergency transport <i>Ex: Sprains, strains, minor heat-related illness.</i>	
Nature of Injury or Illness & Mechanism of Injury		<i>Brief Summary of Injury or Illness (Ex: Unconscious, Struck by Falling Tree)</i>
Transport Request		<i>Air Ambulance / Short Haul/Hoist Ground Ambulance / Other</i>
Patient Location		<i>Descriptive Location &amp; Lat. / Long. (WGS84)</i>
Incident Name		<i>Geographic Name + "Medical" (Ex: Trout Meadow Medical)</i>
On-Scene Incident Commander		<i>Name of on-scene IC of Incident within an Incident (Ex: TFLD Jones)</i>
Patient Care		<i>Name of Care Provider (Ex: EMT Smith)</i>

3. INITIAL PATIENT ASSESSMENT: *Complete this section for each patient as applicable (start with the most severe patient)*

Patient Assessment: See IRPG page 106

Treatment:

4. TRANSPORT PLAN:

Evacuation Location (if different): *(Descriptive Location (drop point, intersection, etc.) or Lat. / Long.)* Patient's ETA to Evacuation Location:

Helispot / Extraction Site Size and Hazards:

5. ADDITIONAL RESOURCES / EQUIPMENT NEEDS:

*Example: Paramedic/EMT, Crews, Immobilization Devices, AED, Oxygen, Trauma Bag, IV/Fluid(s), Splints, Rope rescue, Wheeled litter, HAZMAT, Extrication*

6. COMMUNICATIONS: Identify State Air/Ground EMS Frequencies and Hospital Contacts as applicable

Function	Channel Name/Number	Receive (RX)	Tone/NAC *	Transmit (TX)	Tone/NAC *
COMMAND					
AIR-TO-GRND					
TACTICAL					

7. CONTINGENCY: **Considerations:** *If primary options fail, what actions can be implemented in conjunction with primary evacuation method? Be thinking ahead.*

8. ADDITIONAL INFORMATION: *Updates/Changes, etc.*

**REMEMBER:** Confirm ETA's of resources ordered. Act according to your level of training. Be Alert. Keep Calm. Think Clearly. Act Decisively.



# INCIDENT -SPOT- Weather Forecast



**Name Of Incident:** Black Cove/Deepwoods

**Unit:** NC Forest Service

**Prediction For:** Thursday, 3/20/2025 Afternoon– Friday, 3/21/2025 Evening

**Time/Date Issued:** Thursday, 3/20/2025 @ 1300 hrs

**Location:** 35.293, -82.260

**Signed:** *Matt Doody*

Matt Doody - Incident Meteorologist

## Observations Considered For This Forecast:

Location	Date	Time	Dry Bulb	Wet Bulb	Relative Humidity	Wind Direction	Wind Speed	Other Information
Rutherford	3/20	1445	73.0	49.8	15	WSW	9G28	
Rutherford	3/20	1345	72.0	54.3	31	SSW	16G32	
Rutherford	3/20	1245	69.0	55.6	43	SSW	10G19	

**Discussion:** Winds will be settling mostly to the NW through this evening, with very strong gusts 30-35 mph at times. A very slightly weakening trend is expected overnight as winds shift to the NNW on any south or southeast facing aspects. Gusts still around 30-35 out of the NW at the ridge tops. Winds do diminish slowly during the day Friday.

RH values only recover to around 60%, then drop rapidly through the day back into the mid teens on Friday.

No precipitation is expected with any snow showers remaining northwest of the area overnight. Skies will be partly cloudy.

## Forecast:

Date	Time	Temp.	RH%	Wind Dir.	Wind Speed	Weather
3/20	1500	60	42	NE	15G28	Sky Cover 40%
3/20	1600	57	44	N	15G28	Sky Cover 30%
3/20	1700	54	45	NW	17G32	Sky Cover 30%
3/20	1800	50	50	NW	18G32	Sky Cover 30%
3/20	1900	47	54	NW	17G32	Sky Cover 30%
3/20	2000	43	55	NW	16G32	Sky Cover 30%
3/20	2100	41	57	NW	15G30	Sky Cover 30%
3/20	2200	40	57	NW	15G30	Sky Cover 30%
3/20	2300	40	57	NNW	15G28	Sky Cover 20%
3/21	0000	39	58	NNW	15G28	Sky Cover 20%
3/21	0100	38	59	NNW	14G28	Sky Cover 20%
3/21	0200	37	61	NNW	14G27	Sky Cover 20%

<b>3/21</b>	<b>0300</b>	<b>36</b>	<b>63</b>	<b>NNW</b>	<b>13G27</b>	<b>Sky Cover 40%</b>
<b>3/21</b>	<b>0500</b>	<b>34</b>	<b>64</b>	<b>NNW</b>	<b>13G26</b>	<b>Sky Cover 40%</b>
<b>3/21</b>	<b>0700</b>	<b>32</b>	<b>63</b>	<b>NNW</b>	<b>13G25</b>	<b>Sky Cover 20%</b>
<b>3/21</b>	<b>0900</b>	<b>35</b>	<b>54</b>	<b>NW</b>	<b>12G25</b>	<b>Sky Cover 10%</b>
<b>3/21</b>	<b>1100</b>	<b>44</b>	<b>36</b>	<b>NW</b>	<b>10G20</b>	<b>Sky Cover 10%</b>
<b>3/21</b>	<b>1300</b>	<b>55</b>	<b>20</b>	<b>WNW</b>	<b>9G18</b>	<b>Sky Cover 0%</b>
<b>3/21</b>	<b>1500</b>	<b>62</b>	<b>16</b>	<b>W</b>	<b>8G15</b>	<b>Sky Cover 0%</b>
<b>3/21</b>	<b>1700</b>	<b>63</b>	<b>15</b>	<b>WSW</b>	<b>6G12</b>	<b>Sky Cover 0%</b>
<b>3/21</b>	<b>1900</b>	<b>59</b>	<b>21</b>	<b>SW</b>	<b>6G10</b>	<b>Sky Cover 0%</b>

# FINANCE MESSAGE

**Black Cove NC-NCS-250019- Time Code G,T-1505  
USFS Financial Code: SH4S**

**Deep Woods NC-NCS-250021- Time code G,T-1507  
USFS Financial Code:SH5N**

## **Tips to help us in Finance:**

- Make sure your supervisor has signed your time and that all equipment resources **include E#'s on the top right corner of your shift ticket.**
- Turn in your time each day

## **Phone #s**

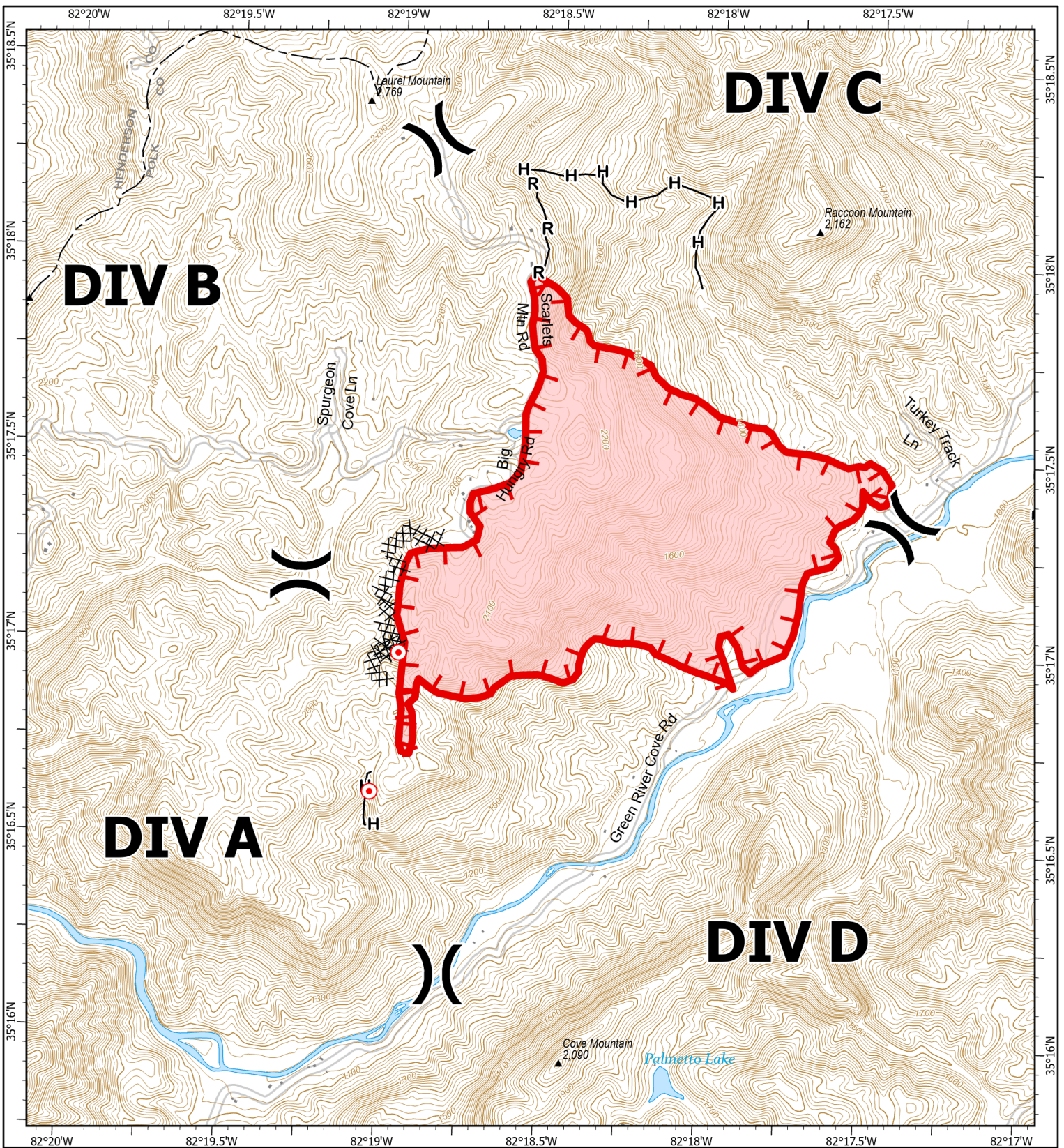
**Mary Nicholson**  
Finance # 828-508-1804

Please email or bring the following to [mary.nicholson@ncagr.gov](mailto:mary.nicholson@ncagr.gov) or Finance after you check in:

- Resource order
- Agreement or contract
- Equipment inspection
- Roster/manifest
- Casual Hire Form



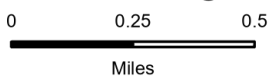




# IAP

**Black Cove**  
**NC-NCS-250019**  
**03/20/2025**

583 acres at 03/20/2025 @ 19:48 hrs



1:25,000 | NCFS | 3/20/2025 2324

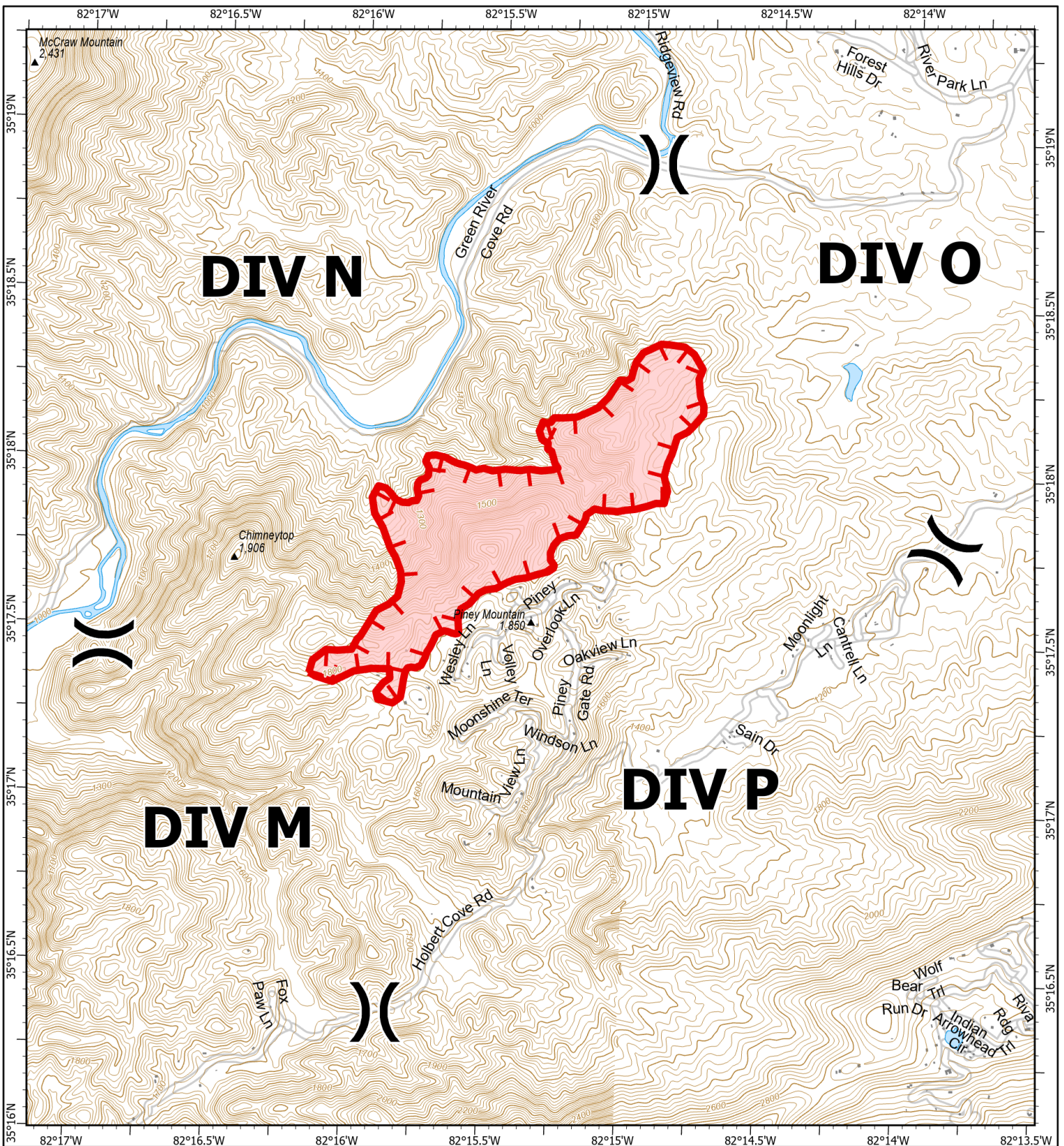
Acres from IR and GPS

North American 1983 Datum, Lat/Long Grid



- Wildfire Perimeter
- Uncontained Fire Edge
- Gap; Summit
- )( Division Break
- Hot Spot - Spot Fire
- x Completed Dozer Line
- H— Completed Hand Line
- R— Completed Road as Line
- Structure FEMA





# IAP

Deep Woods  
NC-NCS-250021

03/20/2025

332 acres at 03/20/2025 @ 19:40 hrs

0 0.25 0.5



Miles

1:29,000 | NCFS | 3/20/2025 2330

Acres from IR and GPS

North American 1983 Datum, LatLong Grid



 Wildfire Perimeter

 Uncontained Fire Edge

 Gap; Summit

 Division Break

 Structure FEMA