

Black Cove Complex

Incident Action Plan

Thursday, March 27, 2025

Day Operational Period 0800 - 2000

Night Operational Period 2000 - 0800



NCDA&CS



Fire #: NC-NCS-250019 Black Cove
Fire #: NC-NCS-250021 Deep Woods
Fire #: NC-NCS-250024 Fish Hook

Check in & Demob IAP &
Fire Danger Card



Maps



INCIDENT OBJECTIVES (ICS 202)

INCIDENT OBJECTIVES	1. Incident Name Black Cove Complex	2. Date Prepared 03/26/25	3. Time Prepared 2000
4. Operational Period (DATE/TIME) From: Date 03/27/25 Time 0800-2000 To: Date 03/28/25 Time 2000-0800			
5. General Control Objectives For The Incident (Include Alternatives):			
<u>Management Objectives</u>			
1: Ensure responder and public safety by making timely, risk informed decisions that align with values at risk.			
2: Foster relationships with local cooperators and the public by providing coordinated, accurate, and timely information.			
3: Manage costs commensurate with values at risk by coordinating with the Agency Administrators and Incident Business Advisors.			
<u>Control Objectives</u>			
1: Implement an effective full suppression strategy, implementing direct and indirect attack where possible, to minimize acres burned.			
2: Establish control lines with the highest likelihood of success to prevent fire from spreading to critical values at risk.			
Black Cove Fire			
Keep the fire: east of Scarlet Mountain Road, north of I-26, west of Raccoon Mountain, south and east of Big Hungry Creek.			
Deep Woods Fire			
Keep the fire: east of Cove Creek, west of Silver Creek, north of Holbert Cove, south of Green River Cove Road.			
Fish Hook Fire			
Keep the fire within current containment features.			
6. Weather Forecast For Period			
See Attached Weather Forecast.			
7. General Safety Message			
See Attached Safety Message.			
8. ATTACHEMENTS (X IF ATTACHED)			
Organizational List – ICS 203 Fire Weather Forecast Fire Behavior Safety Message Div. Assignment Lists - ICS 204 Communications Plan - ICS 205		Medical Plan - ICS 206 IWI - BLACK COVE COMPLEX 8-Line - ICS 206 Finance Message PIO Message Incident Map Unit Log - ICS 214	
9. Prepared By (Resource Unit Leader Trainee) Eve Ciotti		10. Approved By (Incident Commander)	

ORGANIZATION ASSIGNMENT LIST (ICS 203)

1. Incident Name: Black Cove Complex		2. Operational Period:		Date From: 3/27/25 Date to 3/28/25	
				Time From: 0800 Time To: 0800	
3. Command and General Staff:			7. Operations Section:		
Incident Commander	Shane Hardee	Chief	Michael Good, Eric Wiseman		
Dept. IC (Polk Co. EM)	Bobby Arledge	Planning Ops	Chase Payne (t), Glenn Gillette		
Dept. IC (Henderson Co. EM)	Tim McFalls	Field Ops	Brian Rogers (t)		
Safety Officer	Donald Meadows	Night Ops	Scott Cambell		
Safety Officer	Robert Perry				
Safety Officer	Cougan Carruthers				
Safety Officer	Clif McLure	a.	Branch I - Black Cove		
Liaison Officer	Jason Guidry	Branch Director	Hector Medrano		
Public Information Officer	Jeremy Waldrop (828-337-7187)	Division/Group	A/B	Keith Money	
Public Information Officer	Kellie Cannon	Division/Group	C/D	Michael Huffman	
Public Information Officer	Nick Hoffman (t)	Division/Group	C/D	Dillon Michael(t)	
Public Information Officer	Bo Dossett (t)	Division/Group	E	Weston Vandeneabee	
Public Information Officer Tech	E J Dwigins	Division/Group	E	Josh Powell (t)	
Technical Speclist	Kristen McDonald	Division/Group	F	Rex Strickland	
4a. Agency Administrators:		Division/Group	F	Phil Wallace (t)	
		Division/Group			
4b. Agency Representatives:		Division/Group			
NCFS	Michael Cheek	b.	Branch II - Deep Woods		
Henderson Co. EM	Jimmy Brissie	Branch Director	Kevin Hill		
NC EM	David Breedlove	Division/Group	M	Ryan Searcy	
OSFM	Terry Young	Division/Group	N/O/P	Corey Klamut	
5. Planning Section:		Division/Group	N/O/P	Anthony Kornegy (t)	
Chief	Don Watson	Division/Group			
	Dennis Register	Division/Group			
	Emily Walmsley	c.	Fish Hook		
	Brian Yeich (t)	Branch Director	Kevin Hill		
THSP - FMAG	Richard Cockerham	Division/Group	All DIVS	Jacob Martin (t)	
Resources Unit	Eve Ciotti (t)	Division/Group			
Status Check - In	Josh Johnston (t)	d.	Night / Swing DIVS		
	Trevor Davis	Branch Director			
Situation Unit	James Caddy	Division/Group	DIVS (Night)	Jonathon Pearson	
GIS Specialist	Katie Scheip	Division/Group	DIVS (Night)	Jeff Anders	
	AJ Lang	Division/Group	DIVS (Swing)	Dillon Michael (t)	
	Matt Haunsperger	Division/Group			
	Aaron Chamblee	e.	Air Operations Branch		
Field Observer	Jared Tardiff (t)	Air Ops Branch Director			
Fire Behavior	Gary McLendon (t)	Helibase Manager			
IMET	Terry Lebo	Air Tactical Grp Supervisor			
Demobilization Unit	Lisa Hartrick	Air Support Grp Supervisor			
Documentation Unit	Carla Hunt (t)				
6. Logistics Section:		8. Finance Section:			
Chief	Frankie Britt	Chief	Bridgit Gallagher		
	Patrick Raynor (t)	Time Unit	Renee Strickland		
	Larry Hembree	PTRC	Heather Kelly		
	Kimberly Burch	ETRC	Jennifer Williams		
Supply Unit	Travis Ruff	Cost Unit	Kristi Wilson		
Ordering Manager	Mary Nicholson	BUYL	Kelly Howard (t)		
Ordering Manager	James Moller (t)	Buying Team Member	Lee Ann Blackmon		
Ground Support Unit	Wayne Pugh		Greg Hall		
Mechanic	Walter Capps, Christopher Williams	Driver	Jaimee Cappelletti, Paul Mowrey		
Equipment Manager	William Cuthrell, Larry Field		Justin Howell, Conner Griggs		
Equipment Manager	Jonathan Whitman (t)		Daniel Blackburn, Ben Thomas		
Facilities Unit	Derek Arney		Hunter Cook, David Hoffer		
Food Unit	Dan Eason				
	Michael Frye				
Medical Unit	Doug Powell				
Communications Unit	James Meadows				
COMT	Jeffrey Bumgarner				
RADO - Day	Alex Pennell				
RADO - Night	Josh Anderson				
INTD - Day (Lead)	Jonathan Lemmond				
INTD - Day	Jonathan Ellington				
INTD - Night	Liz Dowling, Andrew Johnson				
9. Prepared by: Name: Eve Ciotti		Position/Title: RESL(t)		Signature: <i>Eve Ciotti</i>	
ICS 203		Date Prepared: 3/26/2025		Time Prepared: 1800	



Black Cove Fire Weather Forecast

FORECAST NO: 5
PREDICTION FOR: 0800 3/27/25-0800 3/28/25
FORECAST ISSUED: 1800 EDT 3/26/2025

NAME OF FIRE: Black Cove Fire
UNIT: NCFS Polk County
SIGNED: *Terry Lebo* Incident Meteorologist

WEATHER DISCUSSION

High pressure over western North Carolina Thursday morning will gradually drift east through Friday. This will result in a gradual warming trend and a slow, but steady increase in humidity. Rain chances increase early next week ahead of a cold front that will approach the region on Sunday then cross the area during Monday.

THURSDAY:

WEATHER: Sunny.
TEMPERATURES: Valleys (1000 ft): 68-72 F. Ridges (2500-3000 ft): 63-67 F.
HUMIDITY: Valleys (1000 ft): 15-25% Ridges (2500-3000 ft): 25-35%.
WINDS (20ft): Valleys: From the west-southwest 3-7 mph with occasional gusts around 10 mph. Light upslope on east and north aspects after 1000.
Ridges: From the west-southwest 7-10 mph with gusts 15-20 mph decreasing in the afternoon.
CHC RAIN >0.10": 0%
INVERSION: Moderate inversion breaking around 1000. Mixing heights 5800 ft.

TONIGHT:

WEATHER: Mostly clear.
TEMPERATURES: Valleys (1000 ft): 38-43 F. Ridges (2500-3000 ft): 41-46 F.
HUMIDITY: Valleys (1000 ft): 50-70% Ridges (2500-3000 ft): 40-60%.
WINDS: Valleys: From the southwest 3-6 mph with a few gusts around 10 mph in the evening becoming downslope 2-5 mph after 2300.
Ridges: From the southwest 5-10 mph gusts around 15 mph.
CHC RAIN >0.10": 0%
INVERSION: Weak inversion developing between 2200-2300.

FRIDAY:

WEATHER: Partly to mostly sunny in the morning with increasing afternoon clouds
TEMPERATURES: Valleys (1000 ft): 73-78 F. Ridges (2500-3000 ft): 69-74 F.
HUMIDITY: Valleys (1000 ft): 20-30% Ridges (2500-3000 ft): 30-35%.
WINDS (20ft): Valleys: From the southwest 4-8 mph with gusts around 15 mph.
Ridges: From the southwest 10-15 mph with gusts 20-25 mph.
CHC RAIN >0.10": 0%
INVERSION: Weak inversion breaking around 0900. Mixing heights 5500 ft.

EXTENDED FORECAST:

Saturday: Cloudy. Highs: 68-75 F; min humidity 40-50%. Lows: 48-55 F; max humidity 80-100%. South winds 10-15 mph with gusts 20-25 mph.
Sunday: Mostly cloudy with showers likely. Highs: 65-70 F; min humidity 55-65%. Lows: 50-56 F; max humidity 80-100%. Southwest winds 10-15 mph with gusts 20-30 mph.
Monday: Partly cloudy with showers likely. Highs: 69-75 F; min humidity 45-55%. Lows: 42-47 F; max humidity 70-90%. Southwest winds around 15 mph with gusts 25-30 mph.

FIRE BEHAVIOR FORECAST

FORECAST NUMBER: 6

TYPE OF FIRE: Wildfire

FIRE NAME: Black Cove

OPERATIONAL PERIOD: Day/Night
March 27, 2025

DATE ISSUED: March 26, 2025

TIME ISSUED: 1900

UNIT: NCFS D1-Polk

SIGNED: *Gary McLondon* *Ahan(C)*

WEATHER:

“Continue to be Dry”

See Fire Weather Forecast for Details

CWR: 0 **Temp:** 72 **RH:** 15% **Winds:** W-SW 10 Gust 17

Local Weather Thresholds that shout WATCH OUT!
Temperatures above 60°, Relative Humidity below 30%, 20” winds above 10 mph

FUELS:

The area is dominated by stands of mixed hardwoods. However, there are also areas where conifers intern mix with these hardwood stands. There are also cut units that have light logging slash on the landscape. There are areas of scattered mountain laurel through the understory. Tropical Storm Helene caused pockets of jackstraw timber and jackpot of fine dead fuels. The current ERC-X is above the 97th percentile for this time of year.

Today’s Forecasted Fine Dead Fuel Moisture: 3 % unshaded, 6% shaded

FIRE BEHAVIOR:

Expect fire behavior to be mainly surface fire through hardwood litter. Heavy dead and will increase fire intensity due to the jackpots fuel. Heavy dead and down timber are also contributing to the fire intensity. When the slope and wind align, expect rapid rates of spread. The probability of ignition is near 90% in unshaded areas

Maximum Fire Potential (Head Fire, 0-50% Slope)

	Rate of Spread	Flame Length
Timber Litter	10-15 Ch/Hr.	3 to 5 Ft.
Blowdown	19-26 Ch/Hr.	7 to 10 Ft.

Safety

Watch out Situation #4 – Unfamiliar with weather and local fires influencing fire behavior. There is plenty of local knowledge on this Incident, use it to your advantage.



INCIDENT HEALTH AND SAFETY MESSAGE

Incident: Black Cove Complex	Date: MARCH 27, 2025, Operations: Day/Night
Major Hazards: Snags & Hazard Trees, Public Encounters, Heavy Equipment, Extreme Fire Behavior	
<p>Hazard Mitigations:</p> <p>Snags/Hazard Trees: Review Hazard Tree Safety (Pgs. 20-21 IRPG). Eliminate hazards by using qualified sawyers to remove them. Maintain situational awareness (look up, down, & around) looking for hazard trees. Mark and communicate their location to others on you division. When taking breaks, look up to ensure that you are not underneath a hazard tree or widow-maker.</p> <p>Unplanned Encounters with the Public: If you encounter a member of the public on the line, be aware that they may be under stress and easily agitated. Advise them of the hazards in the area. Be courteous to them and they will likely be courteous to you. If you meet an irate landowner, refer them to Division Supervisors or Taskforce leaders and remove yourself from the situation.</p> <p>Heavy Equipment Operations: Give heavy equipment plenty of space. Stay 1 ½ times the distance of the tallest trees away from equipment working in the forest. Listen for back up alarms and act accordingly when you hear one. Operators must be on the lookout for ground personnel working in the area of heavy equipment. Look for snags or trees with dead tops or branches near equipment.</p> <p>Extreme Fire Behavior: Make sure that everyone knows what the plan is. Fireline leadership must know what the experience level and limitations of their personnel are before engaging the fire. Don't assume that everyone on your division knows what their job is. Ensure that escape routes and safety zones are known and are viable. Communicate changes in fire behavior as soon as they are observed.</p> <p>Safety Officers: Donald Meadows, Robbie Perry, Brandon Hill, Cougan Carruthers, Jim Gregory, Cliff McLure</p>	
<h3 style="text-align: center;">NCHART Hoist Ship Contact Protocol</h3> <ol style="list-style-type: none"> 1. Operational Resources will request NCHART Hoist aircraft through their Division Supervisor just like any other aircraft request. 2. Division Supervisors will request the NCHART Ship through Operations on the Command Frequency. 3. Operations will request NCHART via VIPER, EVENTS, DELTA-4. 	<h3 style="text-align: center;">Planning for Medical Emergencies</h3> <p>At the unit level prior to engaging in operations, ask yourselves these questions:</p> <ol style="list-style-type: none"> 1. What are we going to do is someone gets hurt? <i>Review the IWI protocol along with the Medical Plan located in this IAP.</i> 2. How are we going to get the injured person off the line? 3. How long is it going to take to get advanced medical care to an injured person? <p><i>Do not engage the fire until you can answer these questions, and everyone knows the plan!</i></p>

RESPONDER ASSISTANCE INITIATIVE (RAI)

Information & Resource Line

(866) 731-6901

START THE PROCESS



Proudly housed under Emergency Management, RAI services are confidential and provided as a no-cost benefit to North Carolina Department of Public Safety sworn and non-sworn employees. Our team is staffed with licensed mental health professionals, wellness coordinators, and professionally trained peers.

Peer support and consultation is available to all North Carolina first responder agencies.

The Responder Assistance Initiative in North Carolina is a statewide effort that aims to provide holistic support for first responders, leveraging cross-agency partnerships to reduce stigma and address mental health needs. The initiative offers peer-driven assistance to law enforcement officers, firefighters, and other responders who have been involved in critical incidents. It recognizes the sacrifices made by these individuals in the name of public safety.

DIVISION/GROUP ASSIGNMENT LIST (ICS 204)

1. Incident Name				3			
Black Cove				Branch:	Division:		
2. Operational Period:				1	Alpha / Bravo		
Date: 3/27/2025	Time: 0800-2000						
4. Operations Personnel							
Operations Chief	Michael Good / Eric Wiseman			Field Operations	Brian Rogers (t)		
Branch Director	Hector Medrano			Division / Group Supervisor	Keith Money / Adam Brooks (t)		
				Safety Officer Field	Brandon Hill		
5. Resources Assigned this Period							
Strike Team/Task Force/ Resource Designator	EMT	LWD	Leader	Number Persons	Drop Off PT./Time	Pick Up PT./Time	
NC Wildlife CR2		3/28		17			
SMOD D-8		4/4	Spivey	7			
PatRick Crew --3B		3/26		20			
STEN - OSFM			Gilleland	1			
ENG 6 MI DNR		4/6	Pine	3			
FD Swansboro ENG3			Bowden	2			
FD E. Gaston B-30 ENG6			Hovis	3			
6. Control Operations/Work Assignments:							
<p>Continue to construct direct containment lines along fire perimeter in order to stop fire progression and minimize acres burned. Utilize strategic firing operations as needed with close coordination with adjoining divisions.</p> <p>Continue to assess structure protection needs, and plan and identify alternative containment strategies.</p> <p>Mop-up control lines and around structures approx. 50 feet inside fire perimeter and mitigate remaining hazards or concerns.</p>							
7. Special Instructions:							
<p>Utilize aviation assets as needed, to include bucket ships, SEAT drops, recon flights, scout plane, etc. Request/coordinate through ops.</p> <p>Utilize Field Maps to capture accomplishments and planned control operations. Identify logistical needs: drop points, medevac sites, safety zones, helispots, etc. as needed.</p> <p>Coordinate closely with adjacent divisions, keep OSC informed, and maintain a positive public presence. Relay needs for next day's shift to Planning Ops by 1300.</p>							
8. Division/Group Communication Summary							
Function	Channel	RX Frequency N/W	RX Tone/NAC	TX Frequency N/W	TX Tone/NAC	Radio Type	Mode
Command	Command	151.2200	136.5000	159.3450	131.8000	VHF	N
Tactical Div/Group	TAC-1	151.4000	136.5000	151.4000	136.5000	VHF	N
FD/VFD Tactical	Events Delta 1	800Mhz		800Mhz		Viper	T
Air Guard	INC-15	168.6250	None	168.6250	110.9000	VHF	N
Air to Ground	A-G Primary	171.5750	131.8000	171.5750	131.8000	VHF	N
Air to Ground	A-G Secondary	172.2750	131.8000	172.2750	131.8000	VHF	N
Tactical Medivac Helo	Events Delta 4	800Mhz		800Mhz		Viper	T
9. Prepared by (Resource Unit Leader) Eve Ciotti (t)			Approved by (Plans Section Chief) Don Watson			Date: 3/26/25	Time: 1900

DIVISION/GROUP ASSIGNMENT LIST (ICS 204)

1. Incident Name		3					
Black Cove		Branch: 1		Division:			
2. Operational Period:				Charlie / Delta			
Date:	3/27/2025	Time:	0800-2000				
4. Operations Personnel							
Operations Chief	Michael Good / Eric Wiseman		Field Operations		Brian Rogers (t)		
Branch Director	Hector Medrano		Division / Group Supervisor		Michael Huffman		
5. Resources Assigned this Period							
Strike Team/Task Force/ Resource Designator	EMT	LWD	Leader	Number Persons	Drop Off PT./Time	Pick Up PT./Time	
12 X 3 Dozer O-68		4/4	Welch	2			
ENG6 Black Hills USFS 681 E-13			Snyder	7			
6. Control Operations/Work Assignments:							
<p>Continue to construct direct containment lines along fire perimeter in order to stop fire progression and minimize acres burned. Utilize strategic firing operations as needed with close coordination with adjoining divisions.</p> <p>Continue to assess structure protection needs, and plan and identify alternative containment strategies.</p> <p>Mop-up control lines and around structures approx. 50 feet inside fire perimeter and mitigate remaining hazards or concerns.</p>							
7. Special Instructions:							
<p>Utilize aviation assets as needed, to include bucket ships, SEAT drops, recon flights, scout plane, etc. Request/coordinate through ops.</p> <p>Utilize Field Maps to capture accomplishments and planned control operations. Identify logistical needs: drop points, medevac sites, safety zones, helispots, etc. as needed.</p> <p>Coordinate closely with adjacent divisions, keep OSC informed, and maintain a positive public presence. Relay needs for next day's shift to Planning Ops by 1300.</p>							
8. Division/Group Communication Summary							
Function	Channel	RX Frequency N/W	RX Tone/NAC	TX Frequency N/W	TX Tone/NAC	Radio Type	Mode
Command	Command	151.2200	136.5000	159.3450	131.8000	VHF	N
Tactical Div/Group	TAC-2	151.3100	136.5000	151.3100	136.5000	VHF	N
FD/VFD Tactical	Events Delta 1	800Mhz		800Mhz		Viper	T
Air Guard	INC-15	168.6250	None	168.6250	110.9000	VHF	N
Air to Ground	A-G Primary	171.5750	131.8000	171.5750	131.8000	VHF	N
Air to Ground	A-G Secondary	172.2750	131.8000	172.2750	131.8000	VHF	N
Tactical Medivac Helo	Events Delta 4	800Mhz		800Mhz		Viper	T
9. Prepared by (Resource Unit Leader) Eve Ciotti (t)		Approved by (Plans Section Chief) Don Watson		Date: 3/26/25		Time: 1900	

DIVISION/GROUP ASSIGNMENT LIST (ICS 204)

1. Incident Name		3					
Black Cove		Branch: 1		Division:			
2. Operational Period:				Echo			
Date: 3/27/2025	Time: 0800-2000						
4. Operations Personnel							
Operations Chief	Michael Good / Eric Wiseman		Field Operations		Brian Rogers (t)		
Branch Director	Hector Medrano		Division /Group Supervisor		Weston Vandenabeele / Josh Powell (t)		
5. Resources Assigned this Period							
Strike Team/Task Force/ Resource Designator	EMT	LWD	Leader	Number Persons	Drop Off PT./Time	Pick Up PT./Time	
ENG6 SMOD USFS Big Horn O-21		3/30		6			
ENG6 ODF O-24		4/5	Cline	1			
ENG6 ODF O-37		4/5	Rudolf	1			
ENG6 ODF O-38		4/5	Becktold	1			
ENG6 ODF O-29		4/5	Anderson	1			
SMOD SCFC E11		4/4	Palmer	11			
STEN OSFM			King	1			
FD Dana WT E-2012			Ellison	3			
FD Northeast ENG5				6			
FD Mooresville ENG1 E-2040			Dunn				
FD NE Stokes E-2038							
FD W. Buncombe ENG6 E-2011				5			
FD Fletcher Brush 11 E-2028			Hill	4			
FD NE Stokes WT E-2038				2			
FD W. Buncombe ENG6 E-2011							
6. Control Operations/Work Assignments:							
<p>Continue to construct direct containment lines along fire perimeter in order to stop fire progression and minimize acres burned. Utilize strategic firing operations as needed with close coordination with adjoining divisions.</p> <p>Continue to assess structure protection needs, and plan and identify alternative containment strategies.</p> <p>Mop-up control lines and around structures approx. 50 feet inside fire perimeter and mitigate remaining hazards or concerns.</p>							
7. Special Instructions:							
<p>Utilize aviation assets as needed, to include bucket ships, SEAT drops, recon flights, scout plane, etc. Request/coordinate through ops.</p> <p>Utilize Field Maps to capture accomplishments and planned control operations. Identify logistical needs: drop points, medevac sites, safety zones, helispots, etc. as needed.</p> <p>Coordinate closely with adjacent divisions, keep OSC informed, and maintain a positive public presence. Relay needs for next day's shift to Planning Ops by 1300.</p>							
8. Division/Group Communication Summary							
Function	Channel	RX Frequency N/W	RX Tone/NAC	TX Frequency N/W	TX Tone/NAC	Radio Type	Mode
Command	Command	151.2200	136.5000	159.3450	131.8000	VHF	N
Tactical Div/Group	TAC-3	151.2650	136.5000	151.2650	136.5000	VHF	N
FD/VFD Tactical	Events Delta 1	800Mhz		800Mhz		Viper	T
Air Guard	INC-15	168.6250	None	168.6250	110.9000	VHF	N
Air to Ground	A-G Primary	171.5750	131.8000	171.5750	131.8000	VHF	N
Air to Ground	A-G Secondary	172.2750	131.8000	172.2750	131.8000	VHF	N
Tactical Medivac Helo	Events Delta 4	800Mhz		800Mhz		Viper	T
9. Prepared by (Resource Unit Leader) Eve Ciotti (t)		Approved by (Plans Section Chief) Don Watson		Date: 3/26/25		Time: 1900	

DIVISION/GROUP ASSIGNMENT LIST (ICS 204)

1. Incident Name		3					
Deep Woods		Branch:		Division:			
2. Operational Period:		2		M			
Date:	3/27/2025	Time:	0800-2000				
4. Operations Personnel							
Operations Chief	Michael Good / Eric Wiseman			Field Operations		Brian Rogers (t)	
Branch Director	Kevin Hill			Division /Group Supervisor		Ryan Searcy	
5. Resources Assigned this Period							
Strike Team/Task Force/ Resource Designator	EMT	LWD	Leader	Number Persons	Drop Off PT./Time	Pick Up PT./Time	
ENG6 CO-PLAX E-1				3			
ENG6 USFS MT-CGF E-2			Spence	4			
SMOD El Dorado USFS O-22			Martinez	10			
ENG6 NCFS			12-71 Auten	1			
ENG6 NCFS			12-46 Wilson	1			
BRIDGE X 1 Dozer			Lister	2			
CrewMod D10 / D11				5			
STEN OSFM			Hodges	1			
FD Central ENG3				2			
FD Central ENG5				2			
FD Avery ENG6 7403			Thomas	2			
FD Avery ENG6 5401			Cole	2			
FD Healing Springs ENG6			Pope	4			
FD S. Stokes ENG1			Mabel	2			
6. Control Operations/Work Assignments:							
<p>Continue to construct direct containment lines along fire perimeter in order to stop fire progression and minimize acres burned. Utilize strategic firing operations as needed with close coordination with adjoining divisions.</p> <p>Continue to assess structure protection needs, and plan and identify alternative containment strategies.</p> <p>Mop-up control lines and around structures approx. 50 feet inside fire perimeter and mitigate remaining hazards or concerns.</p>							
7. Special Instructions:							
<p>Utilize aviation assets as needed, to include bucket ships, SEAT drops, recon flights, scout plane, etc. Request/coordinate through ops.</p> <p>Utilize Field Maps to capture accomplishments and planned control operations. Identify logistical needs: drop points, medevac sites, safety zones, helispots, etc. as needed.</p> <p>Coordinate closely with adjacent divisions, keep OSC informed, and maintain a positive public presence. Relay needs for next day's shift to Planning Ops by 1300.</p>							
8. Division/Group Communication Summary							
Function	Channel	RX Frequency N/W	RX Tone/NAC	TX Frequency N/W	TX Tone/NAC	Radio Type	Mode
Command	Command	151.2200	136.5000	159.3450	131.8000	VHF	N
Tactical Div/Group	VTAC 11	151.1375	156.7000	151.1375	156.7000	VHF	N
FD/VFD Tactical	Events Delta 2	800Mhz		800Mhz		Viper	T
Air Guard	Air Guard	168.6250	None	168.6250	110.9000	VHF	N
Air to Ground	A-G Primary	171.5750	131.8000	171.5750	131.8000	VHF	N
Air to Ground	A-G Secondary	172.2750	131.8000	172.2750	131.8000	VHF	N
Tactical Medivac Helo	Events Delta 4	800Mhz		800Mhz		Viper	T
9. Prepared by (Resource Unit Leader) Eve Ciotti (t)			Approved by (Plans Section Chief) Don Watson			Date: 3/26/25	Time: 1900

DIVISION/GROUP ASSIGNMENT LIST (ICS 204)

1. Incident Name		3					
Deep Woods		Branch:		Division:			
2. Operational Period:		2		N/O/P			
Date:	3/27/2025	Time:	0800-2000				
4. Operations Personnel							
Operations Chief	Michael Good / Eric Wiseman			Field Operations		Brian Rogers (t)	
Branch Director	Kevin Hill			Division / Group Supervisor		Corey Klamut / Anthony Kornegy (t)	
5. Resources Assigned this Period							
Strike Team/Task Force/ Resource Designator	EMT	LWD	Leader	Number Persons	Drop Off PT./Time	Pick Up PT./Time	
TFLD			Haywood	1			
ENG6 SCFC E-23			Eddy	2			
ENG6 Tenn. E-14			Villegas	2			
ENG6 Tenn. E-15			Dowdy	2			
CrewMod NC Parks #2			Dennis	5			
CrewMod D4/D13			Wheeler	5			
6. Control Operations/Work Assignments:							
<p>Continue to construct direct containment lines along fire perimeter in order to stop fire progression and minimize acres burned. Utilize strategic firing operations as needed with close coordination with adjoining divisions.</p> <p>Continue to assess structure protection needs, and plan and identify alternative containment strategies.</p> <p>Mop-up control lines and around structures approx. 50 feet inside fire perimeter and mitigate remaining hazards or concerns.</p>							
7. Special Instructions:							
<p>Utilize aviation assets as needed, to include bucket ships, SEAT drops, recon flights, scout plane, etc. Request/coordinate through ops.</p> <p>Utilize Field Maps to capture accomplishments and planned control operations. Identify logistical needs: drop points, medevac sites, safety zones, helispots, etc. as needed.</p> <p>Coordinate closely with adjacent divisions, keep OSC informed, and maintain a positive public presence. Relay needs for next day's shift to Planning Ops by 1300.</p>							
8. Division/Group Communication Summary							
Function	Channel	RX Frequency N/W	RX Tone/NAC	TX Frequency N/W	TX Tone/NAC	Radio Type	Mode
Command	Command	151.2200	136.5000	159.3450	131.8000	VHF	N
Tactical Div/Group	VTAC 12	154.4525	156.7000	154.4525	156.7000	VHF	N
FD/VFD Tactical	Events Delta 2	800Mhz		800Mhz		Viper	T
Air Guard	Air Guard	168.6250	None	168.6250	110.9000	VHF	N
Air to Ground	A-G Primary	171.5750	131.8000	171.5750	131.8000	VHF	N
Air to Ground	A-G Secondary	172.2750	131.8000	172.2750	131.8000	VHF	N
Tactical Medivac Helo	Events Delta 4	800Mhz		800Mhz		Viper	T
9. Prepared by (Resource Unit Leader) Eve Ciotti (t)			Approved by (Plans Section Chief) Don Watson			Date: 3/26/25	Time: 1900

DIVISION/GROUP ASSIGNMENT LIST (ICS 204)

1. Incident Name		3					
Black Cove & Deep Woods		Branch: 1 & 2		Division: Swing Shift			
2. Operational Period:							
Date:	3/27/2025	Time:	1400-0200				
4. Operations Personnel							
Operations Chief	Michael Good / Eric Wiseman		Field Operations		Brian Rogers (t)		
Branch Director			Division / Group Supervisor		Dillon Michael (t)		
5. Resources Assigned this Period							
Strike Team/Task Force/ Resource Designator	EMT	LWD	Leader	Number Persons	Drop Off PT./Time	Pick Up PT./Time	
ENG6 ODF E-127		4/6	Nelson	2			
ENG6 ODF		4/6	Tyler	1			
ENG6 ODF		4/6	Cavender	2			
ENG6 ODF		4/6	Shopes	2			
FD ENG6 Concord B-1			Keziah	2			
FD ENG6 Griffith			Murry	4			
H2IA PatRick 18B C-2			Duffy	20			
6. Control Operations/Work Assignments:							
<p>Patrol and monitor fire activity and progression, and maintain a structure protection presence.</p> <p>Mop-up control lines and around structures, as appropriate for night operations.</p>							
7. Special Instructions:							
<p>Coordinate closely with day divisions, keep OSC informed, and maintain a positive public presence. Rely night activity and updates to ops at 0730 pre-ops meet.</p>							
8. Division/Group Communication Summary							
Function	Channel	RX Frequency N/W	RX Tone/NAC	TX Frequency N/W	TX Tone/NAC	Radio Type	Mode
Command	Command	151.2200	136.5000	159.3450	131.8000	VHF	N
Tactical Div/Group			See Assigned Division				
FD/VFD Tactical			See Assigned Division				
Air Guard	Air Guard	168.6250	None	168.6250	110.9000	VHF	N
Air to Ground	A-G Primary	171.5750	131.8000	171.5750	131.8000	VHF	N
Air to Ground	A-G Secondary	172.2750	131.8000	172.2750	131.8000	VHF	N
Tactical Medivac Helo	Events Delta 4	800Mhz		800Mhz		Viper	T
9. Prepared by (Resource Unit Leader) Eve Ciotti (t)			Approved by (Plans Section Chief) Don Watson			Date: 3/26/25	Time: 1900

DIVISION/GROUP ASSIGNMENT LIST (ICS 204)

1. Incident Name		3					
Black Cove		Branch:		Division:			
2. Operational Period:		1		Black Cove – Night Ops			
Date: 3/27/2025	Time: 2000 - 0800						
4. Operations Personnel							
Operations Chief	Scott Campbell			Division / Group Supervisor		Jonathan Pearson	
Operations Chief				Safety Officer Field		Jim Gregory	
5. Resources Assigned this Period							
Strike Team/Task Force/ Resource Designator	EMT	LWD	Leader	Number Persons	Drop Off PT./Time	Pick Up PT./Time	
ENG6 ODF (TFLD) O-43		4/6	Koonce	2			
ENG6 ODF E-106		4/6	Jackson	2			
ENG6 ODF E-116		4/6	Rose	2			
ENG6 12-41 E-41		4/1	Gordon	1			
FD N. Wake ENG2			Bolick	5			
FD N. Wake ENG6				2			
FD Statesville ENG1			Thompson	4			
FD Wake Forest ENG3			Barrett	3			
FD Wake Forest ENG6				2			
FD Youngville ENG6			Hall	2			
FD NE Stokes ENG1			Hall	2			
FD Battleboro ENG6			Rose	2			
6. Control Operations/Work Assignments:							
<p>Patrol and monitor fire activity and progression, and maintain a structure protection presence.</p> <p>Mop-up control lines and around structures, as appropriate for night operations.</p>							
7. Special Instructions:							
<p>Coordinate closely with day divisions, keep OSC informed, and maintain a positive public presence. Rely night activity and updates to ops at 0730 pre-ops meet.</p>							
8. Division/Group Communication Summary							
Function	Channel	RX Frequency N/W	RX Tone/NAC	TX Frequency N/W	TX Tone/NAC	Radio Type	Mode
Command	Command	151.2200	136.5000	159.3450	131.8000	VHF	N
Tactical Div/Group	TAC-1	151.4000	136.5	151.4000	136.5	VHF	N
FD/VFD Tactical	Events Delta 1	800Mhz		800Mhz		Viper	T
Air Guard	Air Guard	168.6250	None	168.6250	110.9000	VHF	N
Air to Ground	A-G Primary	171.5750	131.8000	171.5750	131.8000	VHF	N
Air to Ground	A-G Secondary	172.2750	131.8000	172.2750	131.8000	VHF	N
Tactical Medivac Helo	Events Delta 4	800Mhz		800Mhz		Viper	T
9. Prepared by (Resource Unit Leader) Eve Ciotti (t)			Approved by (Plans Section Chief) Don Watson			Date: 3/26/25	Time: 1900

DIVISION/GROUP ASSIGNMENT LIST (ICS 204)

1. Incident Name			3				
Deep Woods/Fish Hook			Branch: 2	Division: Deep Woods / Fish Hook – Night Ops			
2. Operational Period:							
Date: 3/27/2025	Time: 2000-0800						
4. Operations Personnel							
Operations Chief	Scott Campbell		Division / Group Supervisor		Jeff Anders		
Operations Chief			Safety Officer		Jim Gregory		
5. Resources Assigned this Period							
Strike Team/Task Force/ Resource Designator	EMT	LWD	Leader	Number Persons	Drop Off PT./Time	Pick Up PT./Time	
ENG6 ODF (TFLD) O-33		4/6	Moodenbaugh	2			
ENG6 ODF E-103		4/6	Sorweide O-41	2			
ENG6 ODF E-104		4/6	Valencia O-48	2			
FD Orange Rural ENG1				4			
FD Summerfield ENG1				4			
FD Boiling Springs ENG3			Freeman	4			
FD Reynolds ENG6			Donati	2			
FD Guil-Rand ENG6			Meyers	2			
NCSP CrewMod		4/3	Slack	5			
D-5 CrewMod			Fox	5			
6. Control Operations/Work Assignments:							
<p>Patrol and monitor fire activity and progression, and maintain a structure protection presence.</p> <p>Mop-up control lines and around structures, as appropriate for night operations.</p>							
7. Special Instructions:							
<p>Coordinate closely with day divisions, keep OSC informed, and maintain a positive public presence. Rely night activity and updates to ops at 0730 pre-ops meet.</p>							
8. Division/Group Communication Summary							
Function	Channel	RX Frequency N/W	RX Tone/NAC	TX Frequency N/W	TX Tone/NAC	Radio Type	Mode
Command	Command	151.2200	136.5000	159.3450	131.8000	VHF	N
Tactical Div/Group	TAC-3	151.2650	136.5	151.2650	136.5	VHF	N
FD/VFD Tactical	Events Delta 2 (Deep Woods) Events Delta 3 (Fish Hook)	800Mhz		800Mhz			
Air Guard	Air Guard	168.6250	None	168.6250	110.9000	VHF	N
Air to Ground	A-G Primary	171.5750	131.8000	171.5750	131.8000	VHF	N
Air to Ground	A-G Secondary	172.2750	131.8000	172.2750	131.8000	VHF	N
Tactical Medivac Helo	Events Delta 4	800Mhz		800Mhz		Viper	T
9. Prepared by (Resource Unit Leader) Eve Ciotti (t)			Approved by (Plans Section Chief) Don Watson			Date: 3/26/25	Time: 1900

INCIDENT RADIO COMMUNICATIONS PLAN		1. Incident Name Black Cove Complex		2. Date/ Time Prepared 3/26/2025 13:45:00 AM		3. Operational Period Date/Time Day/Night - Mar 27-28, 2025	
4. Basic Radio Channel Utilization Mode: W=Wideband, N=Narrowband, D=Digital, M=Mixed, T=Trunked							
Radio Type	Channel	Function	Frequency	Tone	Mode	Assignment	Remarks
VHF	TAC-1	Tactical	RX: 151.4000	136.5	N	Div- Alpha/Bravo / Black Cove Night	Tactical Operations
			TX: 151.4000	136.5			
VHF	TAC-2	Tactical	RX: 151.3100	136.5	N	Div- Charlie/Delta	Tactical Operations
			TX: 151.3100	136.5			
VHF	TAC-3	Tactical	RX: 151.2650	136.5	N	Div- Echo / Deep Woods Night	Tactical Operations
			TX: 151.2650	136.5			
VHF	VCALL 10	Tactical	RX: 155.7525	156.7	N	Div- Foxtrot	Tactical Operations
			TX: 155.7525	156.7			
VHF	VTAC 11	Tactical	RX: 151.1375	156.7	N	Div- Mike	Tactical Operations
			TX: 151.1375	156.7			
VHF	VTAC 12	Tactical	RX: 154.4525	156.7	N	Div- November/Oscar/Papa	Tactical Operations
			TX: 154.4525	156.7			
VHF	VTAC 13	Tactical	RX: 158.7375	156.7	N	Spare	
			TX: 158.7375	156.7			
VHF	VTAC 14	Tactical	RX: 159.4725	156.7	N	Spare	
			TX: 159.4725	156.7			
VHF	VFIRE 25	Tactical	RX: 154.2875	156.7	N	Spare	
			TX: 154.2875	156.7			
VHF	Command	Command	RX: 151.2200	136.5	N	Operations to All Fires	Operational Communications
			TX: 159.3450	131.8			
VHF	A-G Primary	Air to Ground	RX: 171.5750	131.8	N	A-G Primary	Air to Ground Communications
			TX: 171.5750	131.8			
VHF	A-G Secondary	Air to Ground	RX: 172.2750	131.8	N	A-G Secondary	Air to Ground Communications
			TX: 172.2750	131.8			
VIPER	Events Delta 4	Tactical	RX: 800Mhz		T	NC Hart Operations	Medivac Helo
			TX: 800Mhz				
			RX:				
			TX:				
			RX:				
			TX:				
VHF	Air Guard	Air Guard	RX: 168.6250	None	N	USFS Air Guard Channel	
			TX: 168.6250	110.9			

5. Prepared by (Communications Unit)
Jimmy Meadows COML

INCIDENT RADIO COMMUNICATIONS PLAN		1. Incident Name Black Cove Complex		2. Date/ Time Prepared 3/26/2025 17:00:00 PM		3. Operational Period Date/Time Day/Night - Mar 27-28, 2025	
4. Basic Radio Channel Utilization							
Mode: W=Wideband, N=Narrowband, D=Digital, M=Mixed, T=Trunked							
Radio Type	Channel	Function	Frequency	Tone	Mode	Assignment	Remarks
Viper	Events Delta 1	Tactical	RX: 800Mhz		T	Black Cove Structure Protection	FD/VFD Tactical Operations
			TX: 800Mhz				
Viper	Events Delta 2	Tactical	RX: 800Mhz		T	Deep Woods Structure Protection	FD/VFD Tactical Operations
			TX: 800Mhz				
Viper	Events Delta 3	Tactical	RX: 800Mhz		T	Fish Hook Structure Protection	FD/VFD Tactical Operations
			TX: 800Mhz				
Viper	Events Delta 4	Tactical	RX: 800Mhz		T	NC Hart Operations	Medivac Helo
			TX: 800Mhz				
			RX:				
			TX:				
			RX:				
			TX:				
			RX:				
			TX:				
			RX:				
			TX:				
			RX:				
			TX:				
			RX:				
			TX:				
			RX:				
			TX:				
			RX:				
			TX:				
5. Prepared by (Communications Unit) Jimmy Meadows COML							

MEDICAL PLAN (ICS 206)

1. Incident Name:	2. Operational Period: Date From: _____ Time From: _____	Date To: _____ Time To: _____
--------------------------	--	----------------------------------

3. Medical Aid Stations:			
Name	Location	Contact Number(s)/Frequency	Paramedics on Site?
			<input type="checkbox"/> Yes <input type="checkbox"/> No
			<input type="checkbox"/> Yes <input type="checkbox"/> No
			<input type="checkbox"/> Yes <input type="checkbox"/> No
			<input type="checkbox"/> Yes <input type="checkbox"/> No
			<input type="checkbox"/> Yes <input type="checkbox"/> No
			<input type="checkbox"/> Yes <input type="checkbox"/> No

4. Transportation (indicate air or ground):			
Ambulance Service	Location	Contact Number(s)/Frequency	Level of Service
			<input type="checkbox"/> ALS <input type="checkbox"/> BLS
			<input type="checkbox"/> ALS <input type="checkbox"/> BLS
			<input type="checkbox"/> ALS <input type="checkbox"/> BLS
			<input type="checkbox"/> ALS <input type="checkbox"/> BLS

5. Hospitals:							
Hospital Name	Address, Latitude & Longitude if Helipad	Contact Number(s)/Frequency	Travel Time		Trauma Center	Burn Center	Helipad
			Air	Ground			
					<input type="checkbox"/> Yes Level: _____	<input type="checkbox"/> Yes <input type="checkbox"/> No	<input type="checkbox"/> Yes <input type="checkbox"/> No
					<input type="checkbox"/> Yes Level: _____	<input type="checkbox"/> Yes <input type="checkbox"/> No	<input type="checkbox"/> Yes <input type="checkbox"/> No
					<input type="checkbox"/> Yes Level: _____	<input type="checkbox"/> Yes <input type="checkbox"/> No	<input type="checkbox"/> Yes <input type="checkbox"/> No
					<input type="checkbox"/> Yes Level: _____	<input type="checkbox"/> Yes <input type="checkbox"/> No	<input type="checkbox"/> Yes <input type="checkbox"/> No
					<input type="checkbox"/> Yes Level: _____	<input type="checkbox"/> Yes <input type="checkbox"/> No	<input type="checkbox"/> Yes <input type="checkbox"/> No

6. Special Medical Emergency Procedures: <input type="checkbox"/> Check box if aviation assets are utilized for rescue. If assets are used, coordinate with Air Operations.

7. Prepared by (Medical Unit Leader): Name: _____ Signature: _____ Douglas Powell _____
--

8. Approved by (Safety Officer): Name: _____ Signature: _____ Robbie Perry _____

ICS 206	IAP Page _____	Date/Time: _____
---------	----------------	------------------

MEDICAL PLAN (ICS 206)

1. Incident Name:	2. Operational Period: Date From: _____ Time From: _____	Date To: _____ Time To: _____
--------------------------	--	----------------------------------

3. Medical Aid Stations:			
Name	Location	Contact Number(s)/Frequency	Paramedics on Site?
			<input type="checkbox"/> Yes <input type="checkbox"/> No
			<input type="checkbox"/> Yes <input type="checkbox"/> No
			<input type="checkbox"/> Yes <input type="checkbox"/> No
			<input type="checkbox"/> Yes <input type="checkbox"/> No
			<input type="checkbox"/> Yes <input type="checkbox"/> No
			<input type="checkbox"/> Yes <input type="checkbox"/> No

4. Transportation (indicate air or ground):			
Ambulance Service	Location	Contact Number(s)/Frequency	Level of Service
			<input type="checkbox"/> ALS <input type="checkbox"/> BLS
			<input type="checkbox"/> ALS <input type="checkbox"/> BLS
			<input type="checkbox"/> ALS <input type="checkbox"/> BLS
			<input type="checkbox"/> ALS <input type="checkbox"/> BLS

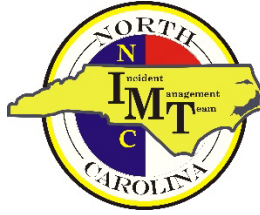
5. Hospitals:							
Hospital Name	Address, Latitude & Longitude if Helipad	Contact Number(s)/Frequency	Travel Time		Trauma Center	Burn Center	Helipad
			Air	Ground			
					<input type="checkbox"/> Yes Level: _____	<input type="checkbox"/> Yes <input type="checkbox"/> No	<input type="checkbox"/> Yes <input type="checkbox"/> No
					<input type="checkbox"/> Yes Level: _____	<input type="checkbox"/> Yes <input type="checkbox"/> No	<input type="checkbox"/> Yes <input type="checkbox"/> No
					<input type="checkbox"/> Yes Level: _____	<input type="checkbox"/> Yes <input type="checkbox"/> No	<input type="checkbox"/> Yes <input type="checkbox"/> No
					<input type="checkbox"/> Yes Level: _____	<input type="checkbox"/> Yes <input type="checkbox"/> No	<input type="checkbox"/> Yes <input type="checkbox"/> No
					<input type="checkbox"/> Yes Level: _____	<input type="checkbox"/> Yes <input type="checkbox"/> No	<input type="checkbox"/> Yes <input type="checkbox"/> No

6. Special Medical Emergency Procedures:
<input type="checkbox"/> Check box if aviation assets are utilized for rescue. If assets are used, coordinate with Air Operations.

7. Prepared by (Medical Unit Leader): Name: _____ Signature: _____

8. Approved by (Safety Officer): Name: _____ Signature: _____
--

ICS 206	IAP Page _____	Date/Time: _____
----------------	-----------------------	------------------



BLACK COVE COMPLEX INCIDENT WITHIN AN INCIDENT (IWI) IAP PROCEDURES FOR OPERATIONAL RESOURCES

In the event of a medical emergency or other emergency that would be considered an incident within an incident the following procedures will be followed:

1. Secure the scene and victim to prevent further injury and provide emergency medical treatment (first aid.)
2. Establish IWI IC. This is usually someone who can assume command and is not rendering treatment to the victim. This IWI IC will remain in command until the IWI is considered complete.
3. IWI IC will transmit via radio to the incident ICP that there is an emergency. The transmission will begin with "MAYDAY MAYDAY MAYDAY." Once this transmission has been made, all radio traffic on the command frequency will cease other than those who are communicating about the IWI. **In the event that the Communications Unit is unable to be raised on the command channel, IWI IC will contact the Operations Section Chief to get assistance as soon as possible to the injured party.**
4. The IWI IC will communicate details of the emergency using the Medical Plan (ICS 206 WF) 8-line report located in the back of the IAP.
5. The Communications Unit will notify the Safety Officer of the IWI. The Communications Unit will also contact local EMS via 911 and provide EMS with accurate information such as type of injury/accident, location, etc.
6. The Safety Officer will at that time notify the Command and General Staff of the IWI via the GroupMe App.
7. Command and General Staff will come together in the Communications Unit to gather information until the IWI is complete.

MEDICAL PLAN (ICS 206 WF)

Controlled Unclassified Information//Basic

Medical Incident Report

FOR A NON-EMERGENCY INCIDENT, WORK THROUGH CHAIN OF COMMAND TO REPORT AND TRANSPORT INJURED PERSONNEL AS NECESSARY.

FOR A MEDICAL EMERGENCY: IDENTIFY ON SCENE INCIDENT COMMANDER BY NAME AND POSITION AND ANNOUNCE "MEDICAL EMERGENCY" TO INITIATE RESPONSE FROM IMT COMMUNICATIONS/DISPATCH.

Use the following items to communicate situation to communications/dispatch.

1. CONTACT COMMUNICATIONS / DISPATCH (**Verify correct frequency prior to starting report**)

Ex: "Communications, Div. Alpha. Stand-by for Emergency Traffic."

2. INCIDENT STATUS: *Provide incident summary (including number of patients) and command structure.*

Ex: "Communications, I have a Red priority patient, unconscious, struck by a falling tree. Requesting air ambulance to Forest Road 1 at (Lat./Long.) This will be the Trout Meadow Medical, IC is TFLD Jones. EMT Smith is providing medical care."

Severity of Emergency / Transport Priority	<input type="checkbox"/> RED / PRIORITY 1 Life or limb threatening injury or illness. Evacuation need is IMMEDIATE <i>Ex: Unconscious, difficulty breathing, bleeding severely, 2° – 3° burns more than 4 palm sizes, heat stroke, disoriented.</i> <input type="checkbox"/> YELLOW / PRIORITY 2 Serious Injury or illness. Evacuation may be DELAYED if necessary. <i>Ex: Significant trauma, unable to walk, 2° – 3° burns not more than 1-3 palm sizes.</i> <input type="checkbox"/> GREEN / PRIORITY 3 Minor Injury or illness. Non-Emergency transport <i>Ex: Sprains, strains, minor heat-related illness.</i>	
Nature of Injury or Illness & Mechanism of Injury		<i>Brief Summary of Injury or Illness (Ex: Unconscious, Struck by Falling Tree)</i>
Transport Request		<i>Air Ambulance / Short Haul/Hoist Ground Ambulance / Other</i>
Patient Location		<i>Descriptive Location & Lat. / Long. (WGS84)</i>
Incident Name		<i>Geographic Name + "Medical" (Ex: Trout Meadow Medical)</i>
On-Scene Incident Commander		<i>Name of on-scene IC of Incident within an Incident (Ex: TFLD Jones)</i>
Patient Care		<i>Name of Care Provider (Ex: EMT Smith)</i>

3. INITIAL PATIENT ASSESSMENT: *Complete this section for each patient as applicable (start with the most severe patient)*

Patient Assessment: See IRPG page 106

Treatment:

4. TRANSPORT PLAN:

Evacuation Location (if different): *(Descriptive Location (drop point, intersection, etc.) or Lat. / Long.)* Patient's ETA to Evacuation Location:

Helispot / Extraction Site Size and Hazards:

5. ADDITIONAL RESOURCES / EQUIPMENT NEEDS:

Example: Paramedic/EMT, Crews, Immobilization Devices, AED, Oxygen, Trauma Bag, IV/Fluid(s), Splints, Rope rescue, Wheeled litter, HAZMAT, Extrication

6. COMMUNICATIONS: Identify State Air/Ground EMS Frequencies and Hospital Contacts as applicable

Function	Channel Name/Number	Receive (RX)	Tone/NAC *	Transmit (TX)	Tone/NAC *
COMMAND					
AIR-TO-GRND					
TACTICAL					

7. CONTINGENCY: **Considerations:** *If primary options fail, what actions can be implemented in conjunction with primary evacuation method? Be thinking ahead.*

8. ADDITIONAL INFORMATION: *Updates/Changes, etc.*

REMEMBER: Confirm ETA's of resources ordered. Act according to your level of training. Be Alert. Keep Calm. Think Clearly. Act Decisively.

FINANCE

Fiori Time Code G, T, F 1505

USFS PN SH4S [1532]

ncfs.imt.finance@ncagr.gov

Submit legible copy of CTR/Shift Ticket daily, email or paper copy acceptable.

- Include Full Legal Name
- Resource #
- Must have Supervisor signature
- Use actual hours of equipment use on the shift tickets

Please email or bring the following to FINANCE after you check in:

- Agreement or contract
- Equipment inspection
- Roster/manifest
- Casual Hire Form



Public Information

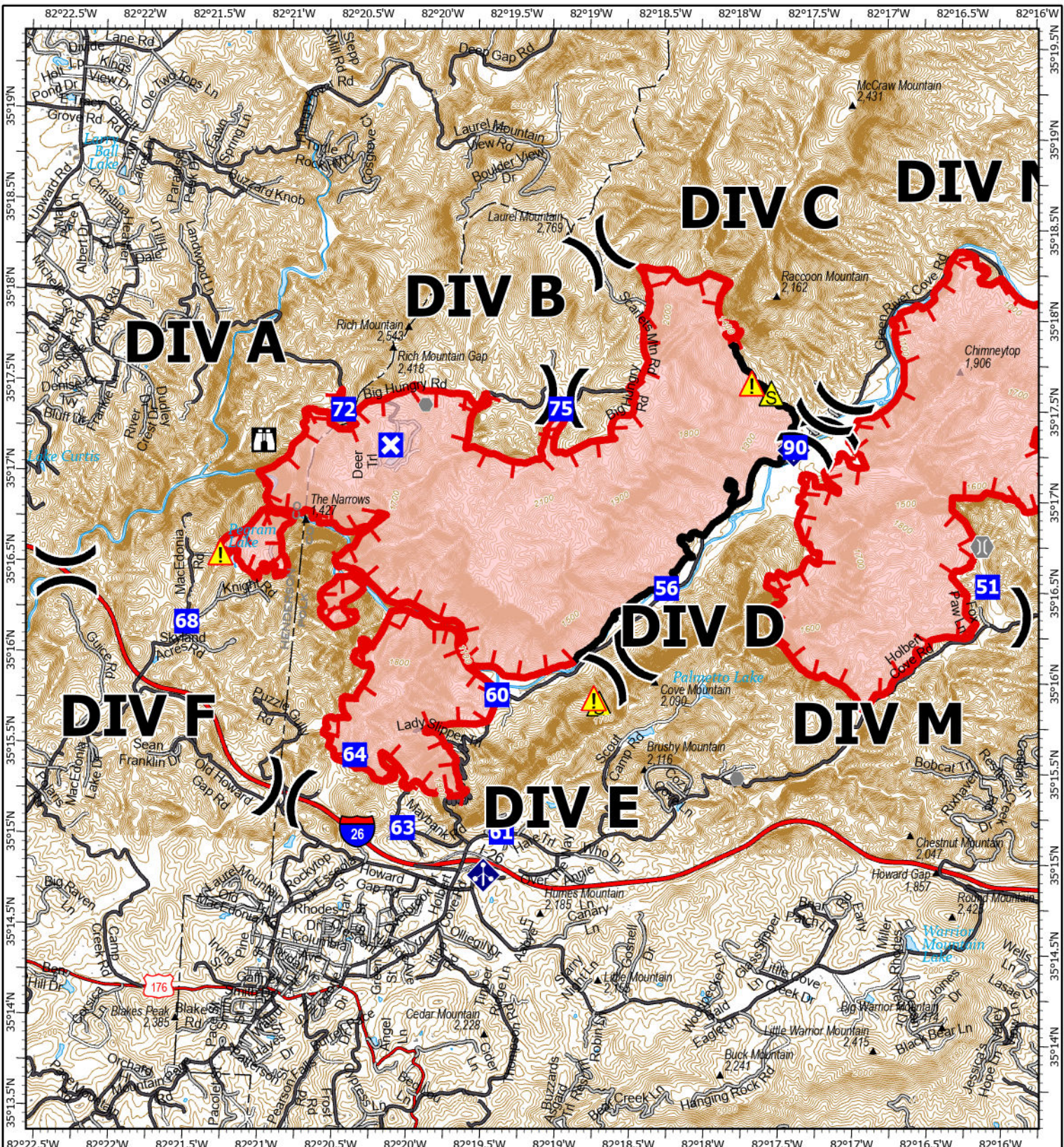
Fireline personnel, you are our eyes and ears on the Fireline!
Please email or text any pictures you have taken while on the
fireline to:

Bo Dossett

Burgin.dossett@ncagr

828-782-1045





IAP

Black Cove
 NC-NCS-250019
 03/27/2025 Day

3,052 acres at 03/26/2025 @ 10:00 hrs

0 0.25 0.5 1

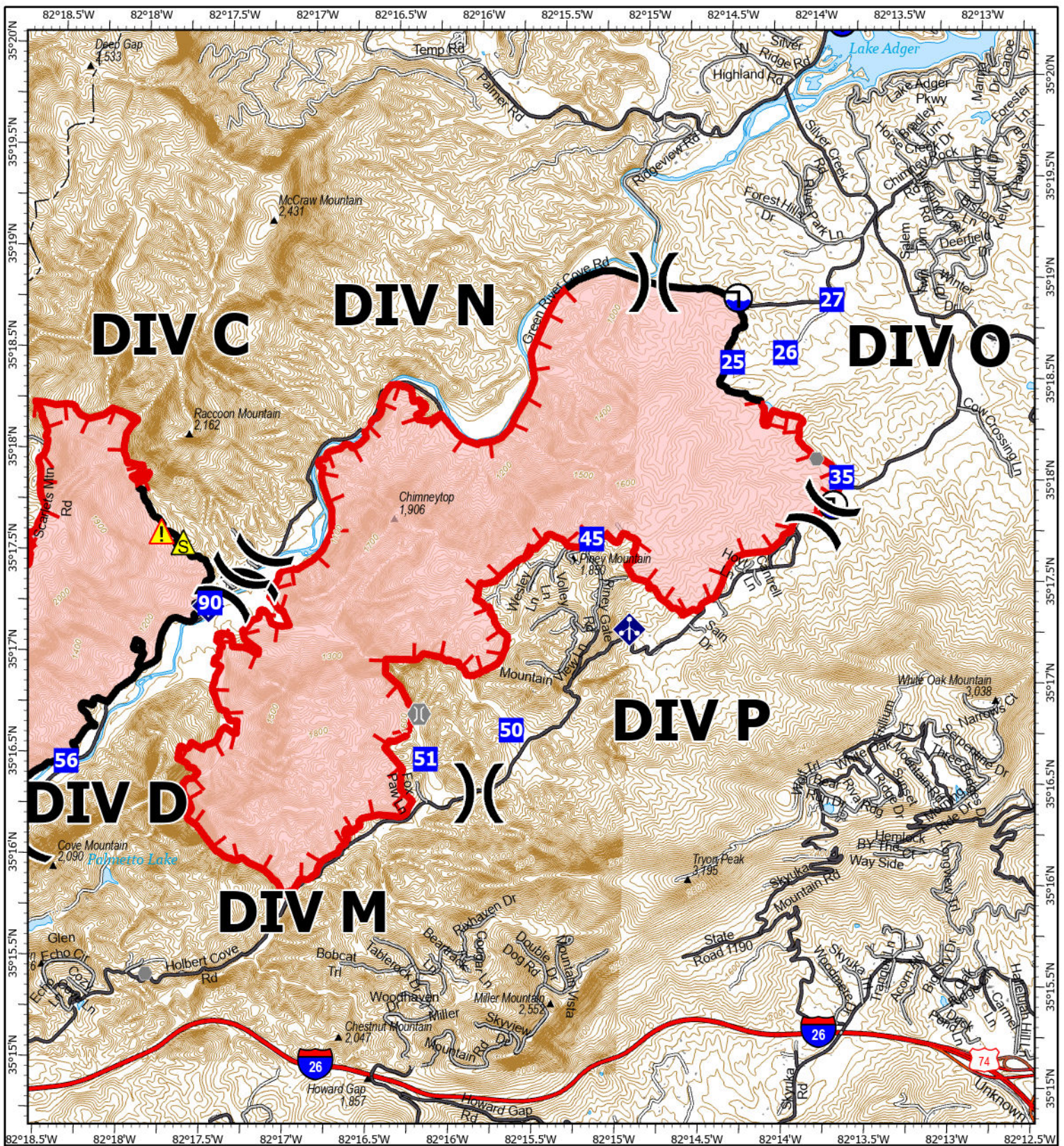
Miles

1:54,000 | NCFS | 3/26/2025 2114

North American 1983 Datum, LatLong Grid



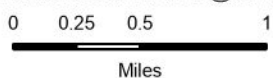
- ▭ Wildfire Perimeter
- ▬ Contained Fire Edge
- ┌ Uncontained Fire Edge
- ▲ Gap; Summit
- X Division Break
- ▲ Safety Zone
- ▲ Hazard
- 🏠 Lookout
- Drop Point
- X Closure
- 📶 Mobile Weather Unit
- Other
- 🚶 Bridge
- ▬ Structure FEMA



IAP

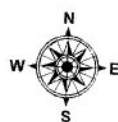
Deep Woods
 NC-NCS-250021
 03/27/2025 Day

3,231 acres at 03/26/2025 @ 05:15 hrs

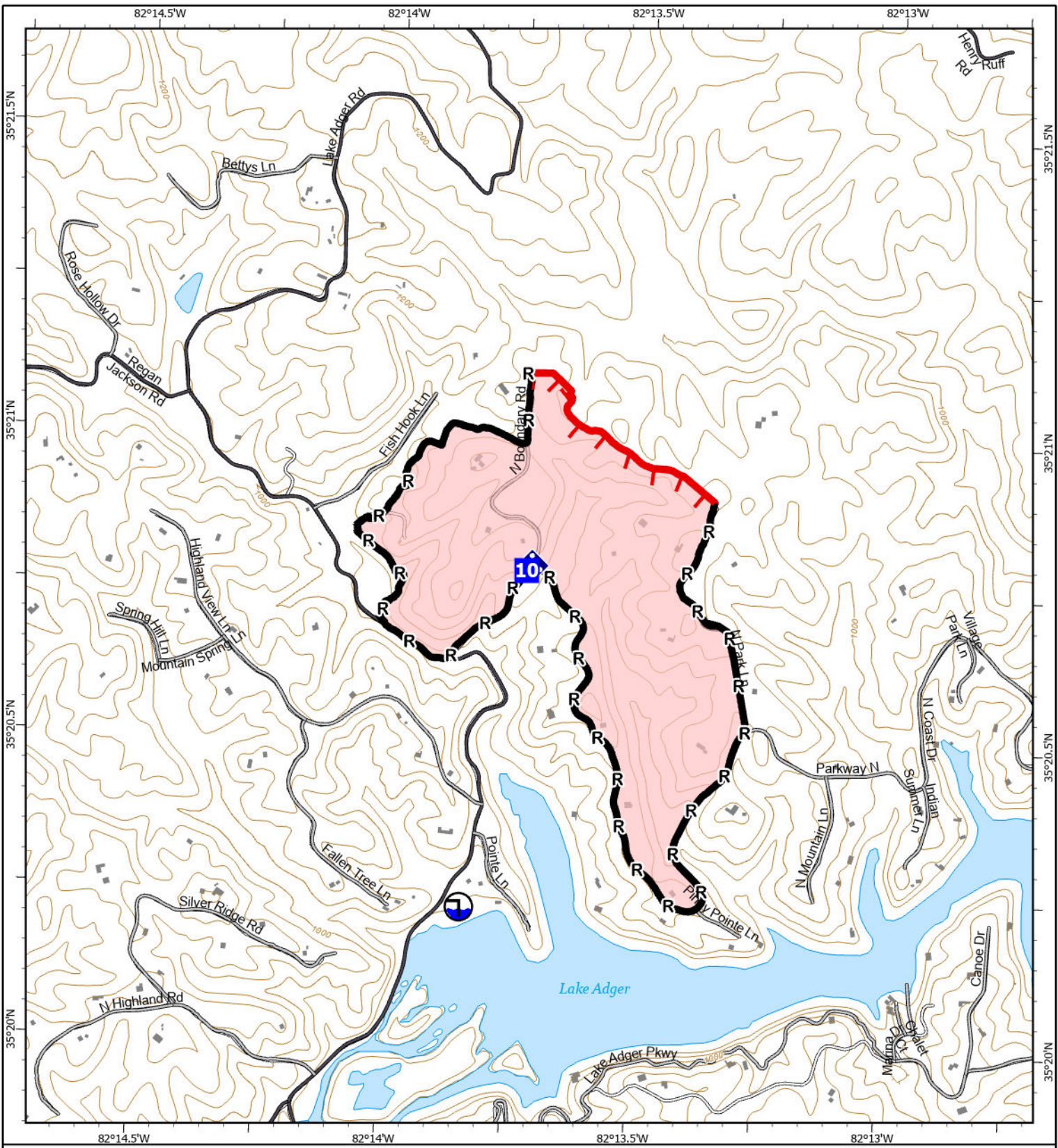


1:48,000 | NCFS | 3/26/2025 2114

North American 1983 Datum, LatLong Grid



- Wildfire Perimeter
- Contained Fire Edge
- Uncontained Fire Edge
- Gap; Summit
- Division Break
- Safety Zone
- Hazard
- Drop Point
- Draft Site
- Mobile Weather Unit
- Other
- Bridge
- Structure FEMA



IAP

Fish Hook
 NC-NCS-250024
 03/27/2025 Day

199 acres at 03/22/2025 @ 11:30 hrs





0 0.25 0.5

Miles

1:16,000 | NCFS | 3/26/2025 2112

North American 1983 Datum, LatLong Grid



-  Wildfire Perimeter
-  Contained Fire Edge
-  Uncontained Fire Edge
-  Drop Point

-  Draft Site
-  Mobile Weather Unit
-  Completed Road as Line
-  Structure FEMA



