

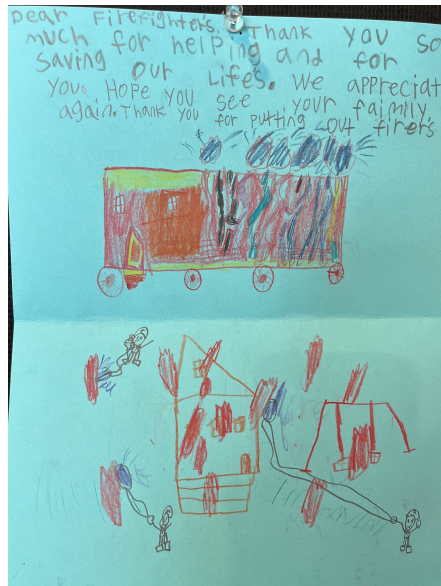
# Black Cove Complex Incident Action Plan

Tuesday, April 1, 2025



NCDA&CS

**Day Operational Period 0800 - 2000**  
**Night Operational Period 2000 - 0800**



**Fire #: NC-NCS-250019 Black Cove**

**Fire #: NC-NCS-250021 Deep Woods**

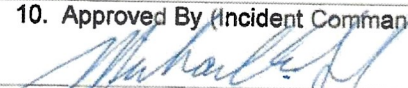
**Fire #: NC-NCS-250024 Fish Hook**

Check In, Demob, IAP, Maps & Fire Danger Card



Documentation Email: [ncblackcovecomplex@gmail.com](mailto:ncblackcovecomplex@gmail.com)

# INCIDENT OBJECTIVES (ICS 202)

|   |  |  |                                     |                                 |
|---|--|--|-------------------------------------|---------------------------------|
| <b>INCIDENT OBJECTIVES</b>  |  | 1. Incident Name<br><b>Black Cove Complex</b>  | 2. Date Prepared<br><b>03/31/25</b> | 3. Time Prepared<br><b>2000</b> |
| 4. Operational Period (DATE/TIME)   |  | From: Date 04/01/25 Time 0800<br>To: Date 04/2/25 Time 0800  |                                     |                                 |
| 5. General Control Objectives For The Incident (Include Alternatives):  |  |  |                                     |                                 |
| <b>Management Objectives</b>  |  |  |                                     |                                 |
| <ol style="list-style-type: none"> <li>1. Ensure responder and public safety by making timely, risk informed decisions that align with values at risk.</li> <li>2. Foster relationships with local cooperators and the public by providing coordinated, accurate, and timely information.</li> <li>3. Manage costs commensurate with values at risk by coordinating with the Agency Administrators and Incident Business Advisors.</li> </ol> |  |  |                                     |                                 |
| <b>Control Objectives</b>   |  |  |                                     |                                 |
| <ol style="list-style-type: none"> <li>1. Maintain and improve established control lines to keep the fire footprint unchanged.</li> <li>2. Protect homes and other improvements through mop-up.</li> <li>3. Repair suppression impacted areas to agency standards.</li> </ol>   |  |  |                                     |                                 |
| <b>Black Cove Fire</b>  |  |  |                                     |                                 |
| Keep the fire: east of Scarlet Mountain Road, north of I-26, west of Raccoon Mountain, south and east of Big Hungry Creek.  |  |  |                                     |                                 |
| <b>Deep Woods Fire</b>  |  |  |                                     |                                 |
| Keep the fire: east of Cove Creek, west of Silver Creek, north of Holbert Cove, south of Green River Cove Road.   |  |  |                                     |                                 |
| <b>Fish Hook Fire</b>   |  |  |                                     |                                 |
| Keep the fire within current containment features.  |  |  |                                     |                                 |
| 6. Weather Forecast For Period  |  |  |                                     |                                 |
| See Attached Weather Forecast.  |  |  |                                     |                                 |
| 7. General Safety Message   |  |  |                                     |                                 |
| See Attached Safety Message.  |  |  |                                     |                                 |
| 8. ATTACHEMENTS (X IF ATTACHED)   |  |  |                                     |                                 |
| Organizational List – ICS 203<br>Fire Weather Forecast<br>Fire Behavior<br>Safety Message<br>Div. Assignment Lists - ICS 204<br>Communications Plan - ICS 205<br>Air Operations Summary – ICS220  |  | Medical Plan - ICS 206<br>IWI - BLACK COVE COMPLEX<br>8-Line - ICS 206<br>Finance Message<br>Incident Map<br>Tentative Demob<br>Unit Log - ICS 214 |                                     |                                 |
| 9. Prepared By (Resource Unit Leader Trainee)<br>Eve Ciotti   |  | 10. Approved By (Incident Commander)<br>                       |                                     |                                 |

# ORGANIZATION ASSIGNMENT LIST (ICS 203)

|   |                                    |                                  |  |  |  |  |
|---|------------------------------------|----------------------------------|--|--|--|--|
| <b>1. Incident Name:</b> Black Cove Complex |                                    | <b>2. Operational Period:</b>    |  | <b>Date From:</b> 4/1/25 <b>Date to:</b> 4/2/25<br><b>Time From:</b> 0800 <b>Time To:</b> 0800 |  |  |
| <b>3. Command and General Staff:</b>        |                                    |                                  | <b>6. Logistics Section (continued):</b> |  |  |  |
| Incident Commander                          | Michael Good                       | Communications Unit              | James Meadows                            |  |  |  |
| Dept. IC (Polk Co. EM)                      | Bobby Arledge                      | COMT                             | Jeffrey Bumgarner                        |  |  |  |
| Safety Officer                              | Donald Meadows, Robert Perry       | RADO - Day                       | Alex Pennell                             |  |  |  |
| Safety Officer                              | Cougan Carruthers                  | RADO - Night                     | Josh Anderson                            |  |  |  |
| Liaison Officer                             | James Kimes, Adam Livermore        | INTD - Day                       | Nathan Jackson, Kevin Bernal             |  |  |  |
| Liaison Officer (t)                         | Sarah Patton                       | INTD - Night                     | Garrett Mcinniss, Dominic Taylor         |  |  |  |
| Public Information Officer                  | Jeremy Waldrop (828-337-7187)      | <b>7. Operations Section:</b>    |  |  |  |  |
| Public Information Officer                  | Kellie Cannon, Nick Hoffman (t)    | Lead Ops                         | Eric Wiseman                             |  |  |  |
| Public Information Officer                  | Bo Dossett (t)                     | Planning Ops                     | Kevin Hill, Chase Payne (t)              |  |  |  |
| Public Information Officer Tech             | Renee Brown                        | Field Ops                        | Hector Medrano                           |  |  |  |
| <b>4a. Agency Administrators:</b>           |                                    | <b>a. Black Cove</b>             |  |  |  |  |
| NCFS  | Michael Cheek                      | Branch Director                  |  |  |  |  |
| <b>4b. Agency Representatives:</b>          |                                    | Division/Group                   | A/B                                      | Rich Harnden, Adam Brooks (t)  |  |  |
| Henderson Co. EM                            | Tim McFalls                        | Division/Group                   | C/D                                      | Michael Huffman  |  |  |
| NC EM                                       | David Breedlove                    | Division/Group                   | E  | Ivan Carrier   |  |  |
| OSFM  | Terry Young                        | Division/Group                   | E  | Josh Powell (t)  |  |  |
| <b>5. Planning Section:</b>                 |                                    | Division/Group                   | F  | Jason Rodriguez  |  |  |
| Chief                                       | Don Watson                         | Division/Group                   | F  | John Haskvitz (t)  |  |  |
|   | Dennis Register                    | Division/Group                   |  |  |  |  |
|   | Brian Yeich (t)                    | Division/Group                   |  |  |  |  |
| THSP - FMAG                                 | Richard Cockerham                  | Division/Group                   |  |  |  |  |
| Resources Unit                              | Eve Ciotti (t)                     | <b>b. Deep Woods / Fish Hook</b> |  |  |  |  |
| Status Check - In                           | Josh Johnston (t)                  |                                  |  |  |  |  |
|   | Trevor Davis (t)                   | Division/Group                   | M  | Darrin Keyse / Ray Black (t)   |  |  |
| Situation Unit                              | James Caddy                        | Division/Group                   | N/O/P / Fish Hook                        | Josh Brock / Cody Kingsbury (t)  |  |  |
| GIS Specialist                              | Katie Scheip                       | Division/Group                   |  |  |  |  |
|   | AJ Lang                            | Division/Group                   |  |  |  |  |
|   | Matt Haunsperger                   | Division/Group                   |  |  |  |  |
|   | Aaron Chamblee                     |                                  |  |  |  |  |
| Field Observer                              | Jared Tardiff (t)                  | <b>c. Initial Attack Group</b>   |  |  |  |  |
| Fire Behavior                               | Gary McLendon (t)                  |                                  |  |  |  |  |
| IMET  | Terry Lebo                         | <b>d. Air Operations Branch</b>  |  |  |  |  |
| Demobilization Unit                         | Lisa Hartrick                      | Air Ops Branch Director          |  | Mike Kerrigan  |  |  |
| Documentation Unit                          | Carla Hunt (t)                     | Helibase Manager                 |  | John Nobles  |  |  |
| <b>6. Logistics Section:</b>                |                                    | Helicopter Manager               |  | Anthony Kornegay   |  |  |
|   | Chief                              | Frankie Britt                    | Air Support Grp Supervisor               | Efraim Garcia  |  |  |
|   |                                    | Patrick Raynor (t)               | <b>8. Finance Section:</b>               |  |  |  |
|   |                                    | Cole Whitehurst                  | Chief                                    | Bridgit Gallagher  |  |  |
| Supply Unit                                 | Travis Ruff                        | Time Unit                        | Renee Strickland                         |  |  |  |
| RCDM  | Brad Kramer                        | ETRC                             | Heather Kelly                            |  |  |  |
| RCDM  | Ben Bingham                        | Cost Unit                        | Jennifer Williams                        |  |  |  |
| RCDM(t)                                     | Marc Whittman                      | BUYL                             | Kristi Wilson                            |  |  |  |
| Ordering Manager                            | James Moeller (t)                  | Buying Team Member               | Kelly Howard (t)                         |  |  |  |
| Mechanic                                    | Walter Capps, Christopher Williams |                                  | Lee Ann Blackmon, Greg Hall              |  |  |  |
| Equipment Manager                           | William Cuthrell, Larry Field      | Driver                           | Anna Donnelley                           |  |  |  |
| Equipment Manager                           | Jonathan Whitman (t)               |                                  | Jaimee Cappelletti, Paul Mowrey          |  |  |  |
| Facilities Unit                             | Derek Arney                        |                                  | Justin Howell, David Hoffer              |  |  |  |
| Food Unit                                   | Michael Fry, Dan Eason             |                                  | Daniel Blackburn, Ben Thomas             |  |  |  |
| Driver                                      | Connor Griggs, Brantly Wagman      |                                  | Hunter Cook                              |  |  |  |
| Medical Unit                                | Doug Powell                        |                                  |  |  |  |  |
| <b>9. Prepared by:</b> Name: Eve Ciotti     |                                    | Position/Title: RESL(t)          | Signature: <i>Eve Ciotti</i>             |  |  |  |
| ICS 203                                     |                                    | Date Prepared: 3/31/2025         | Time Prepared: 1800                      |  |  |  |



## Black Cove Fire Weather Forecast

**FORECAST NO:** 10  
**PREDICTION FOR:** 0800 4/1/25-0800 4/2/25  
**FORECAST ISSUED:** 1800 EDT 3/31/2025

**NAME OF FIRE:** Black Cove Fire  
**UNIT:** NCFS Polk County  
**SIGNED:** *Terry Lebo* Incident Meteorologist

---

### WEATHER DISCUSSION

High pressure will build in from the northwest on Tuesday with temperatures near to slightly above normal. Clouds increase Wednesday as the center of the high shifts east, enhancing east-northeast winds at the surface. A warm front will lift north of the area Wednesday night into Thursday pushing temperatures well above normal for the end of the week. Breezy and dry daytime conditions return Thursday through Saturday as ridging aloft strengthens.

---

#### TUESDAY:

**WEATHER:** Mostly sunny.

**TEMPERATURES:** Valleys (1000-1500 ft): 73-77 F. Ridges (1500-2500 ft): 68-72 F.  
**HUMIDITY:** Valleys (1000-1500 ft): 25-30% Ridges (1500-2500 ft): 30-35%.

**WINDS (20ft):** Valleys: Light downslope through 0900 then upslope 3-5 mph with gusts around 8 mph.  
Ridges: From the north-northwest 5-10 mph becoming south 7-10 mph with gusts around 15 mph in the afternoon.

**CHC RAIN >0.10":** 0%  
**INVERSION:** Moderate inversion breaking 0800-0900. Mixing heights around 5000 ft.

---

#### TONIGHT:

**WEATHER:** Mostly clear in the evening with increasing clouds after midnight.

**TEMPERATURES:** Valleys (1000-1500 ft): 47-52 F. Ridges (1500-2500 ft): 44-49 F.  
**HUMIDITY:** Valleys (1000-1500 ft): 90-100% Ridges (1500-2500 ft): 80-100%.

**WINDS:** Valleys: Light and variable becoming downslope 2-4 mph around 2000.  
Ridges: From the east 5-8 mph with gusts around 12 mph becoming northeast after midnight.

**CHC RAIN >0.10":** 0%  
**INVERSION:** Weak inversion developing around 1900.

---

#### WEDNESDAY:

**WEATHER:** Partly to mostly cloudy with scattered showers.

**TEMPERATURES:** Valleys (1000-1500 ft): 61-65 F. Ridges (1500-2500 ft): 57-61 F.  
**HUMIDITY:** Valleys (1000-1500 ft): 55-60% Ridges (1500-2500 ft): 60-65%.

**WINDS (20ft):** Valleys: Light and variable becoming upslope 3-5 mph with gusts around 8 mph after 0900.  
Ridges: From the northeast 5-10 mph becoming southeast around 10 mph with gusts 15-20 mph in the afternoon.

**CHC RAIN >0.10":** 0%  
**INVERSION:** Weak inversion. Mixing heights around 1500 ft.

---

### EXTENDED FORECAST:

**Thursday:** Partly cloudy. Highs: 70-80 F; min humidity 40-50%. Lows: 52-58 F; max humidity 80-90%. Southwest winds 10-15 mph with gusts 25-30 mph.

**Friday:** Partly to mostly sunny. Highs: 74-84 F; min humidity 30-40%. Lows: 54-60 F; max humidity 60-70%. Southwest winds 10-15 mph with gusts around 25 mph.

**Saturday:** Partly to mostly sunny. Highs: 75-85 F; min humidity 25-35%. Lows: 55-62 F; max humidity 70-80%. Southwest winds around 15 mph with gusts 25-30 mph.



# FIRE BEHAVIOR FORECAST

**FORECAST NUMBER:** 11

**TYPE OF FIRE:** Wildfire

**FIRE NAME:** Black Cove

**OPERATIONAL PERIOD:** Day/Night  
April 1, 2025

**DATE ISSUED:** March 31, 2025

**TIME ISSUED:** 1900

**UNIT:** NCFS D1-Polk

**SIGNED:** *Gary McLondon* *Ahan(C)*

## WEATHER:

“Sunshine Returns”

See Fire Weather Forecast for Details

**CWR:** 0   **Temp:** 75   **RH:** 25%   **Winds:** S 8 Gust 17

***Local Weather Thresholds that shout WATCH OUT!***  
***Temperatures above 60°, Relative Humidity below 30%, 20” winds above 10 mph***

## FUELS:

Stands of mixed hardwoods dominate the area. However, there are also areas where conifers intermix with these hardwood stands. Cut units with light logging slash on the landscape exist. There are also areas of scattered mountain laurel through the understory. Tropical Storm Helene caused pockets of jackstraw timber and a jackpot of fine dead fuels.

***Today's Forecasted Fine Dead Fuel Moisture: 6% unshaded, 8% shaded***

## FIRE BEHAVIOR:

Fire growth should stay relatively limited due to moisture that fell across the fire area on Sunday and Monday. Fire behavior should be limited to smoldering, especially in pre-Helene dead and down fuels that are sheltered from any rainfall.

## Safety

Keep your head up and look across the entire landscape. Stay situationally aware and look ahead.



## **INCIDENT HEALTH AND SAFETY MESSAGE**

**INCIDENT:** Black Cove Complex

**DATE/SHIFT:** Tuesday April 1, 2025

**Major Hazards and Risks:** Snags, ATV/UTV use, Driving & Traffic and Steep Terrain/Rolling Debris

**ATV/UTV Operation:** Use headlights to improve visibility by other vehicles. Maintain speeds acceptable for riding conditions, especially over uneven terrain. Avoid traversing steep slopes. Wear PPE and only allow experienced drivers to operate.

**Fireline Hazards:** Do not work directly above or below personnel during mop-up operations. Watch for falling and rolling debris on steep slopes. Evaluate the necessity to send personnel in areas with limited access. Post lookouts.

**Driving & Traffic:** Use spotters when possible and honk your horn to alert personnel when backing. Yield to pedestrians. Turn the front wheels uphill or into the inside/embankment and firmly set the emergency brake when parking on a slope.

**Snags:** Maintain situational awareness and point out snags to others. Be aware of dead snags caused by hurricane damage. Do not park vehicles under snags or trees with widow makers. Use flagging tape to keep others out of the area. **LOOK UP, DOWN, AND AROUND!**

### **WATCH YOUR STEP!**

Slips, Trips, & Falls are one of the most common accidents on fires. Pay attention to where you are stepping.

### **Demob Hazards**

It is recommended that you should have 8 hours of rest prior to demobilizing from the incident. Remember to drive defensively when traveling home. Burn your headlights for visibility to other drivers. Try not to talk on your phone and drive at the same time. Never text and drive.

Follow Demobilization Procedures located in the Incident Action Plan (IAP) for a safe and orderly departure from the incident.

DIVISION/GROUP ASSIGNMENT LIST (ICS 204)

|  |                |                  |  |                             |                            |                                |            |
|--|----------------|------------------|--|-----------------------------|----------------------------|--------------------------------|------------|
| 1. Incident Name   |                |                  |  | 3                           |                            |                                |            |
| Black Cove   |                |                  |  | Branch:                     | Division:<br>Alpha / Bravo |                                |            |
| 2. Operational Period:   |                |                  |  |                             |                            |                                |            |
| Date: 4/1/2025   |                | Time: 0800-2000  |  |                             |                            |                                |            |
| 4. Operations Personnel  |                |                  |  |                             |                            |                                |            |
| Operations Chief   | Eric Wiseman   |                  |  | Field Operations            |                            | Hector Medrano                 |            |
| Branch Director  |                |                  |  | Division / Group Supervisor |                            | Rich Harnden / Adam Brooks (t) |            |
|  |                |                  |  | Safety Officer Field        |                            | Brandon Hill                   |            |
| 5. Resources Assigned this Period  |                |                  |  |                             |                            |                                |            |
| Strike Team/Task Force/<br>Resource Designator   | RO#            | LWD              | Leader                                       | Number<br>Persons           | Drop Off<br>PT./Time       | Pick Up<br>PT./Time            |            |
| TFLD ODF   | O-123          | 4/10             | Michael Cearn                                | 1                           |                            |                                |            |
| NC Wildlife CR2  | O-1002         |                  |  | 17                          |                            |                                |            |
|  |                |                  |  |                             |                            |                                |            |
|  |                |                  |  |                             |                            |                                |            |
|  |                |                  |  |                             |                            |                                |            |
|  |                |                  |  |                             |                            |                                |            |
|  |                |                  |  |                             |                            |                                |            |
|  |                |                  |  |                             |                            |                                |            |
|  |                |                  |  |                             |                            |                                |            |
|  |                |                  |  |                             |                            |                                |            |
|  |                |                  |  |                             |                            |                                |            |
| 6. Control Operations/Work Assignments:  |                |                  |  |                             |                            |                                |            |
| Mop-up control lines and around structures approx. 200 feet inside fire perimeter and mitigate remaining hazards and concerns.                                   |                |                  |  |                             |                            |                                |            |
| 7. Special Instructions:   |                |                  |  |                             |                            |                                |            |
| Utilize field Maps to capture line locations and suppression repair needs  |                |                  |  |                             |                            |                                |            |
| Coordinate closely with adjacent divisions, keep OSC informed and maintain a positive public presence. Relay needs for next day’s shift to Planning Ops by 1300. |                |                  |  |                             |                            |                                |            |
| Remove trash from lines and backhaul unneeded supplies.  |                |                  |  |                             |                            |                                |            |
| 8. Division/Group Communication Summary  |                |                  |  |                             |                            |                                |            |
| Function   | Channel        | RX Frequency N/W | RX Tone/NAC                                  | TX Frequency N/W            | TX Tone/NAC                | Radio Type                     | Mode       |
| Command  | Command        | 151.2200         | 136.5000                                     | 159.3450                    | 131.8000                   | VHF                            | N          |
| Tactical Div/Group   | TAC-1          | 151.4000         | 136.5000                                     | 151.4000                    | 136.5000                   | VHF                            | N          |
| FD/VFD Tactical  | Events Delta 1 | 800Mhz           |  | 800Mhz                      |                            | Viper                          | T          |
| Air Guard  | INC-15         | 168.6250         | None   | 168.6250                    | 110.9000                   | VHF                            | N          |
| Air to Ground  | A-G Primary    | 171.5750         | 131.8000                                     | 171.5750                    | 131.8000                   | VHF                            | N          |
| Air to Ground  | A-G Secondary  | 172.2750         | 131.8000                                     | 172.2750                    | 131.8000                   | VHF                            | N          |
| Tactical Medivac Helo  | Events Delta 4 | 800Mhz           |  | 800Mhz                      |                            | Viper                          | T          |
| 9. Prepared by (Resource Unit Leader) Eve Ciotti (t)   |                |                  | Approved by (Plans Section Chief) Don Watson |                             |                            | Date: 3/31/25                  | Time: 1900 |

DIVISION/GROUP ASSIGNMENT LIST (ICS 204)

|  |                |                  |  |                                  |                |                   |                  |
|--|----------------|------------------|--|----------------------------------|----------------|-------------------|------------------|
| 1. Incident Name   |                |                  | 3  |                                  |                |                   |                  |
| Black Cove   |                |                  | Branch:                                      | Division:<br><br>Charlie / Delta |                |                   |                  |
| 2. Operational Period:   |                |                  |  |                                  |                |                   |                  |
| Date: 4/1/2025      Time: 0800-2000  |                |                  |  |                                  |                |                   |                  |
| 4. Operations Personnel  |                |                  |  |                                  |                |                   |                  |
| Operations Chief   |                | Eric Wiseman     |  | Field Operations                 |                | Hector Medrano    |                  |
| Branch Director  |                |                  |  | Division / Group Supervisor      |                | Michael Huffman   |                  |
| 5. Resources Assigned this Period  |                |                  |  |                                  |                |                   |                  |
| Strike Team/Task Force/ Resource Designator  |                | RO#              | LWD  | Leader                           | Number Persons | Drop Off PT./Time | Pick Up PT./Time |
|  |                |                  |  |                                  |                |                   |                  |
| TFLD   |                | O-120            | 4/11   | Danile Moore                     | 1              |                   |                  |
| HEQB   |                | O-145            | 4/11   | Ayres                            | 1              |                   |                  |
| Dozer NCWRC  |                |                  |  |                                  |                |                   |                  |
| ENG6 Tenn.   |                | E-55             | 4/7  | McFarland                        | 2              |                   |                  |
| ENG6 Tenn.   |                | E-56             | 4/7  | Mash                             | 2              |                   |                  |
| ENG6 ODF   |                | E-106            | 4/5  | Jackson/Tryon                    | 2              |                   |                  |
| ENG6 ODF   |                | E-107            | 4/5  | Koonce                           | 2              |                   |                  |
| ENG6 ODF   |                | E-108            | 4/5  | Gregory                          | 2              |                   |                  |
|  |                |                  |  |                                  |                |                   |                  |
| 6. Control Operations/Work Assignments:  |                |                  |  |                                  |                |                   |                  |
| Mop-up control lines and around structures approx. 200 feet inside fire perimeter and mitigate remaining hazards and concerns.                                   |                |                  |  |                                  |                |                   |                  |
| 7. Special Instructions:   |                |                  |  |                                  |                |                   |                  |
| Utilize field Maps to capture line locations and suppression repair needs  |                |                  |  |                                  |                |                   |                  |
| Coordinate closely with adjacent divisions, keep OSC informed and maintain a positive public presence. Relay needs for next day’s shift to Planning Ops by 1300. |                |                  |  |                                  |                |                   |                  |
| Remove trash from lines and backhaul unneeded supplies.  |                |                  |  |                                  |                |                   |                  |
| 8. Division/Group Communication Summary  |                |                  |  |                                  |                |                   |                  |
| Function   | Channel        | RX Frequency N/W | RX Tone/NAC                                  | TX Frequency N/W                 | TX Tone/NAC    | Radio Type        | Mode             |
| Command  | Command        | 151.2200         | 136.5000                                     | 159.3450                         | 131.8000       | VHF               | N                |
| Tactical Div/Group   | TAC-2          | 151.3100         | 136.5000                                     | 151.3100                         | 136.5000       | VHF               | N                |
| FD/VFD Tactical  | Events Delta 1 | 800Mhz           |  | 800Mhz                           |                | Viper             | T                |
| Air Guard  | INC-15         | 168.6250         | None   | 168.6250                         | 110.9000       | VHF               | N                |
| Air to Ground  | A-G Primary    | 171.5750         | 131.8000                                     | 171.5750                         | 131.8000       | VHF               | N                |
| Air to Ground  | A-G Secondary  | 172.2750         | 131.8000                                     | 172.2750                         | 131.8000       | VHF               | N                |
| Tactical Medivac Helo  | Events Delta 4 | 800Mhz           |  | 800Mhz                           |                | Viper             | T                |
| 9. Prepared by (Resource Unit Leader) Eve Ciotti (t)   |                |                  | Approved by (Plans Section Chief) Don Watson |                                  | Date: 3/31/25  |                   | Time: 1900       |



DIVISION/GROUP ASSIGNMENT LIST (ICS 204)

|  |                |                  |  |                            |                   |                                |                  |
|--|----------------|------------------|--|----------------------------|-------------------|--------------------------------|------------------|
| 1. Incident Name   |                |                  |  | 3                          |                   |                                |                  |
| Black Cove   |                |                  |  | Branch:                    | Division:<br>Echo |                                |                  |
| 2. Operational Period:   |                |                  |  |                            |                   |                                |                  |
| Date: 4/1/2025   |                | Time: 0800-2000  |  |                            |                   |                                |                  |
| 4. Operations Personnel  |                |                  |  |                            |                   |                                |                  |
| Operations Chief   |                | Eric Wiseman     |  | Field Operations           |                   | Hector Medrano                 |                  |
| Branch Director  |                |                  |  | Division /Group Supervisor |                   | Ivan Carrier / Josh Powell (t) |                  |
| 5. Resources Assigned this Period  |                |                  |  |                            |                   |                                |                  |
| Strike Team/Task Force/ Resource Designator  |                | RO#              | LWD  | Leader                     | Number Persons    | Drop Off PT./Time              | Pick Up PT./Time |
| TFLD ODF   |                | E-105            | 4/6  | Moodenbaugh                | 2                 |                                |                  |
| SMOD SCFC  |                | E-11             | 4/4  | Palmer                     | 11                |                                |                  |
| ME DNR   |                | E-185            | 4/11   | Brad                       | 4                 |                                |                  |
| ODF ENG6   |                | E-104            | 4/6  | Valencia                   | 2                 |                                |                  |
| ODF ENG6   |                | E-103            | 4/6  | Feldman                    | 2                 |                                |                  |
|  |                |                  |  |                            |                   |                                |                  |
|  |                |                  |  |                            |                   |                                |                  |
|  |                |                  |  |                            |                   |                                |                  |
|  |                |                  |  |                            |                   |                                |                  |
|  |                |                  |  |                            |                   |                                |                  |
|  |                |                  |  |                            |                   |                                |                  |
| 6. Control Operations/Work Assignments:  |                |                  |  |                            |                   |                                |                  |
| Control operations/work assignments:   |                |                  |  |                            |                   |                                |                  |
| Mop-up control lines and around structures approx. 200 feet inside fire perimeter and mitigate remaining hazards and concerns.                                   |                |                  |  |                            |                   |                                |                  |
| 7. Special Instructions:   |                |                  |  |                            |                   |                                |                  |
| Utilize field Maps to capture line locations and suppression repair needs  |                |                  |  |                            |                   |                                |                  |
| Coordinate closely with adjacent divisions, keep OSC informed and maintain a positive public presence. Relay needs for next day’s shift to Planning Ops by 1300. |                |                  |  |                            |                   |                                |                  |
| Remove trash from lines and backhaul unneeded supplies.  |                |                  |  |                            |                   |                                |                  |
| 8. Division/Group Communication Summary  |                |                  |  |                            |                   |                                |                  |
| Function   | Channel        | RX Frequency N/W | RX Tone/NAC                                  | TX Frequency N/W           | TX Tone/NAC       | Radio Type                     | Mode             |
| Command  | Command        | 151.2200         | 136.5000                                     | 159.3450                   | 131.8000          | VHF                            | N                |
| Tactical Div/Group   | TAC-3          | 151.2650         | 136.5000                                     | 151.2650                   | 136.5000          | VHF                            | N                |
| FD/VFD Tactical  | Events Delta 1 | 800Mhz           |  | 800Mhz                     |                   | Viper                          | T                |
| Air Guard  | INC-15         | 168.6250         | None   | 168.6250                   | 110.9000          | VHF                            | N                |
| Air to Ground  | A-G Primary    | 171.5750         | 131.8000                                     | 171.5750                   | 131.8000          | VHF                            | N                |
| Air to Ground  | A-G Secondary  | 172.2750         | 131.8000                                     | 172.2750                   | 131.8000          | VHF                            | N                |
| Tactical Medivac Helo  | Events Delta 4 | 800Mhz           |  | 800Mhz                     |                   | Viper                          | T                |
| 9. Prepared by (Resource Unit Leader) Eve Ciotti (t)   |                |                  | Approved by (Plans Section Chief) Don Watson |                            | Date: 3/31/25     |                                | Time: 1900       |

DIVISION/GROUP ASSIGNMENT LIST (ICS 204)

|  |                |                  |  |                             |                      |                                     |                  |
|--|----------------|------------------|--|-----------------------------|----------------------|-------------------------------------|------------------|
| 1. Incident Name   |                |                  |  | 3                           |                      |                                     |                  |
| Black Cove   |                |                  |  | Branch:                     | Division:<br>Foxtrot |                                     |                  |
| 2. Operational Period:   |                |                  |  |                             |                      |                                     |                  |
| Date: 4/1/2025   |                | Time: 0800-2000  |  |                             |                      |                                     |                  |
| 4. Operations Personnel  |                |                  |  |                             |                      |                                     |                  |
| Operations Chief   |                | Eric Wiseman     |  | Field Operations            |                      | Hector Medrano                      |                  |
| Branch Director  |                |                  |  | Division / Group Supervisor |                      | Jason Rodriguez / John Haskvitz (t) |                  |
| 5. Resources Assigned this Period  |                |                  |  |                             |                      |                                     |                  |
| Strike Team/Task Force/ Resource Designator  |                | RO#              | LWD  | Leader                      | Number Persons       | Drop Off PT./Time                   | Pick Up PT./Time |
| TFLD ODF   |                | O-121            | 4/10   | Chalmers                    | 1                    |                                     |                  |
| TFLD ODF   |                | O-124            | 4/10   | O’nion                      | 1                    |                                     |                  |
| TFLD (t) ODF   |                | O-125            | 4/10   | Neys                        | 1                    |                                     |                  |
|  |                |                  |  |                             |                      |                                     |                  |
| Greyback Alpha 2   |                | C-10             | 4-10   | Babbitt                     | 20                   |                                     |                  |
|  |                |                  |  |                             |                      |                                     |                  |
|  |                |                  |  |                             |                      |                                     |                  |
| ENG6 ODF   |                | E-115            | 4/5  | Cline/Anderson              | 2                    |                                     |                  |
| ENG6 ODF   |                | E-117            | 4/5  | Rudolf/Becktold             | 2                    |                                     |                  |
|  |                |                  |  |                             |                      |                                     |                  |
|  |                |                  |  |                             |                      |                                     |                  |
|  |                |                  |  |                             |                      |                                     |                  |
|  |                |                  |  |                             |                      |                                     |                  |
| 6. Control Operations/Work Assignments:  |                |                  |  |                             |                      |                                     |                  |
| Mop-up control lines and around structures approx. 200 feet inside fire perimeter and mitigate remaining hazards and concerns.                                   |                |                  |  |                             |                      |                                     |                  |
| 7. Special Instructions:   |                |                  |  |                             |                      |                                     |                  |
| Utilize field Maps to capture line locations and suppression repair needs  |                |                  |  |                             |                      |                                     |                  |
| Coordinate closely with adjacent divisions, keep OSC informed and maintain a positive public presence. Relay needs for next day’s shift to Planning Ops by 1300. |                |                  |  |                             |                      |                                     |                  |
| Remove trash from lines and backhaul unneeded supplies.  |                |                  |  |                             |                      |                                     |                  |
| 8. Division/Group Communication Summary  |                |                  |  |                             |                      |                                     |                  |
| Function   | Channel        | RX Frequency N/W | RX Tone/NAC                                  | TX Frequency N/W            | TX Tone/NAC          | Radio Type                          | Mode             |
| Command  | Channel        | RX Frequency N/W | RX Tone/NAC                                  | TX Frequency N/W            | TX Tone/NAC          | Radio Type                          | Mode             |
| Tactical Div/Group   | Command        | 151.2200         | 136.5000                                     | 159.3450                    | 131.8000             | VHF                                 | N                |
| FD/VFD Tactical  | VCALL 10       | 156.7            | 136.5000                                     | 156.7                       | 136.5000             | VHF                                 | N                |
| Air Guard  | Events Delta 1 | 800Mhz           |  | 800Mhz                      |                      | Viper                               | T                |
| Air to Ground  | INC-15         | 168.6250         | None   |                             | 168.6250             |                                     | 110.9000         |
| Air to Ground  | A-G Primary    | 171.5750         | 131.8000                                     | 171.5750                    | 131.8000             | VHF                                 | N                |
| Tactical Medivac Helo  | A-G Secondary  | 172.2750         | 131.8000                                     | 172.2750                    | 131.8000             | VHF                                 | N                |
| 9. Prepared by (Resource Unit Leader) Eve Ciotti (t)   |                |                  | Approved by (Plans Section Chief) Don Watson |                             |                      | Date: 3/31/25                       | Time: 1900       |

DIVISION/GROUP ASSIGNMENT LIST (ICS 204)

|  |                |                  |  |                  |                              |                       |            |
|--|----------------|------------------|--|------------------|------------------------------|-----------------------|------------|
| 1. Incident Name   |                |                  | 3  |                  |                              |                       |            |
| Deep Woods   |                |                  | Branch:                                      | Division:<br>M   |                              |                       |            |
| 2. Operational Period:   |                |                  |  |                  |                              |                       |            |
| Date: 4/1/2025   |                | Time: 0800-2000  |  |                  |                              |                       |            |
| 4. Operations Personnel  |                |                  |  |                  |                              |                       |            |
| Operations Chief   | Eric Wiseman   |                  | Field Operations                             |                  | Hector Medrano               |                       |            |
| Safety – Line  |                |                  | Division / Group Supervisor                  |                  | Darrin Keyse / Ray Black (t) |                       |            |
|  |                |                  |  |                  |                              |                       |            |
| Strike Team/Task Force/ Resource Designator  | RO#            | LWD              | Leader                                       | Number Persons   | Drop Off PT./Time            | Pick Up PT./Time      |            |
| TFLD ODF   | O-122          | 4/10             | Peter Anthony                                | 1                |                              |                       |            |
| TFLD - NCSP  | O-7.15         | 4/3              | Haywood                                      | 1                |                              |                       |            |
| TFLD MISS.   | O-153          | 4/12             | Crews  | 1                |                              |                       |            |
| Safety Line S. Dakota  | O-13           | 4/7              | Cliff McClure                                | 1                |                              |                       |            |
| 12 X 3 Dozer E-150   | E-150          | 4/6              | Welch O-68                                   | 2                |                              |                       |            |
| HEQB   | O-120          | 4/11             | Moore  | 1                |                              |                       |            |
| ENG6 Patrick Environment   | E-144          | 4/1              | Marr   | 3                |                              | Will be crew swapping |            |
| Grayback Crew 2 Bravo  | C-9            | 4/10             | Dougherty                                    | 20               |                              |                       |            |
| CR2I - ARDEN SOLUTIONS, INC NCC 12B  | C-8            | 4/11             | Aguirre                                      | 20               |                              |                       |            |
| SMOD El Dorado USFS  | O-22           | 4/5              | Martinez                                     | 10               |                              |                       |            |
| ENG6 USFS MT-CGF   | E-120          | 4/3              | Spence                                       | 4                |                              | Will be crew swapping |            |
| ENG6 ODF   | E-127          | 4/6              | Kling/Reed                                   | 2                |                              |                       |            |
| ENG6 ODF   | E-192          | 4/6              | Brink/Spiesschaert                           | 2                |                              |                       |            |
| ENG6 ODF   | E-125          | 4/6              | Cavender/Ricks                               | 2                |                              |                       |            |
| 6. Control Operations/Work Assignments:  |                |                  |  |                  |                              |                       |            |
| Mop-up control lines and around structures approx. 200 feet inside fire perimeter and mitigate remaining hazards and concerns.                                   |                |                  |  |                  |                              |                       |            |
| 7. Special Instructions:   |                |                  |  |                  |                              |                       |            |
| Utilize field Maps to capture line locations and suppression repair needs  |                |                  |  |                  |                              |                       |            |
| Coordinate closely with adjacent divisions, keep OSC informed and maintain a positive public presence. Relay needs for next day’s shift to Planning Ops by 1300. |                |                  |  |                  |                              |                       |            |
| Remove trash from lines and backhaul unneeded supplies.  |                |                  |  |                  |                              |                       |            |
| 8. Division/Group Communication Summary  |                |                  |  |                  |                              |                       |            |
| Function   | Channel        | RX Frequency N/W | RX Tone/NAC                                  | TX Frequency N/W | TX Tone/NAC                  | Radio Type            | Mode       |
| Command  | Command        | 151.2200         | 136.5000                                     | 159.3450         | 131.8000                     | VHF                   | N          |
| Tactical Div/Group   | VTAC 12        | 154.4525         | 156.7000                                     | 154.4525         | 156.7000                     | VHF                   | N          |
| FD/VFD Tactical  | Events Delta 2 | 800Mhz           |  | 800Mhz           |                              | Viper                 | T          |
| Air Guard  | Air Guard      | 168.6250         | None   | 168.6250         | 110.9000                     | VHF                   | N          |
| Air to Ground  | A-G Primary    | 171.5750         | 131.8000                                     | 171.5750         | 131.8000                     | VHF                   | N          |
| Air to Ground  | A-G Secondary  | 172.2750         | 131.8000                                     | 172.2750         | 131.8000                     | VHF                   | N          |
| Tactical Medivac Helo  | Events Delta 4 | 800Mhz           |  | 800Mhz           |                              | Viper                 | T          |
| 9. Prepared by (Resource Unit Leader) Eve Ciotti (t)   |                |                  | Approved by (Plans Section Chief) Don Watson |                  | Date: 3/31/25                |                       | Time: 1900 |

DIVISION/GROUP ASSIGNMENT LIST (ICS 204)

|  |                                   |                  |  |                                |  |                  |            |
|--|-----------------------------------|------------------|--|--------------------------------|--|------------------|------------|
| 1. Incident Name   |                                   |                  | 3  |                                |  |                  |            |
| Deep Woods   |                                   |                  | Branch:                                      | Division:<br>N/O/P / Fish Hook |  |                  |            |
| 2. Operational Period:   |                                   |                  |  |                                |  |                  |            |
| Date: 4/1/2025   |                                   | Time: 0800-2000  |  |                                |  |                  |            |
| 4. Operations Personnel  |                                   |                  |  |                                |  |                  |            |
| Operations Chief   | Eric Wiseman                      |                  | Field Operations                             |                                | Hector Medrano                           |                  |            |
| Safety – Line  | Coogan Carruthers / Josh Bell (t) |                  | Division / Group Supervisor                  |                                | Joshua Brock O-100 / Cody Kingsberry (t) |                  |            |
|  |                                   |                  |  |                                |  |                  |            |
| Strike Team/Task Force/ Resource Designator  | RO#                               | LWD              | Leader                                       | Number Persons                 | Drop Off PT./Time                        | Pick Up PT./Time |            |
|  |                                   |                  |  |                                |  |                  |            |
| ENG3 MI DNR  | E-46                              |                  | Pine   | 3                              |  |                  |            |
| ENG6 SCFC  | E-23                              | 4/4              | Eaddy  | 2                              |  |                  |            |
| ENG6 Tenn.   | E-14                              | 4/5              | Villegas                                     | 2                              |  |                  |            |
| ENG6 Tenn.   | E-15                              | 4/5              | Dowdy  | 2                              |  |                  |            |
| ENG6 ODF   | E-133                             | 4/5              | Eberlein/Shopes                              | 2                              |  |                  |            |
|  |                                   |                  |  |                                |  |                  |            |
| ASI 12A  | C-7                               | 4/11             | Harrison                                     | 20                             |  |                  |            |
| Patrick 3B   | C-1                               | 4/11             | Beard  | 20                             |  |                  |            |
| 6. Control Operations/Work Assignments:  |                                   |                  |  |                                |  |                  |            |
| Mop-up control lines and around structures approx. 200 feet inside fire perimeter and mitigate remaining hazards and concerns.                                   |                                   |                  |  |                                |  |                  |            |
|  |                                   |                  |  |                                |  |                  |            |
| 7. Special Instructions:   |                                   |                  |  |                                |  |                  |            |
| Utilize field Maps to capture line locations and suppression repair needs  |                                   |                  |  |                                |  |                  |            |
| Coordinate closely with adjacent divisions, keep OSC informed and maintain a positive public presence. Relay needs for next day’s shift to Planning Ops by 1300. |                                   |                  |  |                                |  |                  |            |
| Remove trash from lines and backhaul unneeded supplies.  |                                   |                  |  |                                |  |                  |            |
| 8. Division/Group Communication Summary  |                                   |                  |  |                                |  |                  |            |
| Function   | Channel                           | RX Frequency N/W | RX Tone/NAC                                  | TX Frequency N/W               | TX Tone/NAC                              | Radio Type       | Mode       |
| Command  | Command                           | 151.2200         | 136.5000                                     | 159.3450                       | 131.8000                                 | VHF              | N          |
| Tactical Div/Group   | VTAC 12                           | 154.4525         | 156.7000                                     | 154.4525                       | 156.7000                                 | VHF              | N          |
| FD/VFD Tactical  | Events Delta 2                    | 800Mhz           |  | 800Mhz                         |  | Viper            | T          |
| Air Guard  | Air Guard                         | 168.6250         | None   | 168.6250                       | 110.9000                                 | VHF              | N          |
| Air to Ground  | A-G Primary                       | 171.5750         | 131.8000                                     | 171.5750                       | 131.8000                                 | VHF              | N          |
| Air to Ground  | A-G Secondary                     | 172.2750         | 131.8000                                     | 172.2750                       | 131.8000                                 | VHF              | N          |
| Tactical Medivac Helo  | Events Delta 4                    | 800Mhz           |  | 800Mhz                         |  | Viper            | T          |
| 9. Prepared by (Resource Unit Leader) Eve Ciotti (t)   |                                   |                  | Approved by (Plans Section Chief) Don Watson |                                | Date: 3/31/25                            |                  | Time: 1900 |



DIVISION/GROUP ASSIGNMENT LIST (ICS 204)

|  |                |   |     |  |                   |                      |            |
|--|----------------|---|-----|--|-------------------|----------------------|------------|
| 1. Incident Name                                     |                |   |     | 3  |                   |                      |            |
| Black Cove Complex                                   |                |   |     | Branch:                                      |                   | Division: IA Support |            |
| 2. Operational Period:                               |                |   |     |  |                   |                      |            |
| Date:  |                | Time:   |     |  |                   |                      |            |
| 4. Operations Personnel                              |                |   |     |  |                   |                      |            |
| Operations Chief                                     |                |   |     | Division / Group Supervisor                  |                   |                      |            |
| Operations Chief                                     |                |   |     | Division / Group Supervisor                  |                   |                      |            |
| 5. Resources Assigned this Period                    |                |   |     |  |                   |                      |            |
| Strike Team/Task Force/<br>Resource Designator       |                | EMT   | LWD | Leader                                       | Number<br>Persons | Contact              |            |
| O-151 DIVS   |                |   |     | Matt Clemins                                 | 1                 | 575-973-0297         |            |
| O-189 DIVS   |                |   |     | Eric Kiehn                                   | 1                 | 206-650-6869         |            |
| O-149 DIVS CO DFPC                                   |                |   |     | Paul Amundson                                | 1                 | 720-684-7633         |            |
| O-99 DIVS  |                |   |     | Ben Duda                                     | 1                 | 541-480-6139         |            |
| O-59 DIVS  |                |   |     | Paul Breuwer                                 | 1                 | 208-451-1583         |            |
|  |                |   |     |  |                   |                      |            |
| O-127 TFLD CO DFPC                                   |                |   |     | Derick Charpentier                           | 1                 | 970-692-6863         |            |
| O-126 TFLD CO DFPC                                   |                |   |     | Jon Brewer                                   | 1                 | 719-747-1596         |            |
| O-152 TFLD CO DFPC                                   |                |   |     | Charles Lanoge                               | 1                 | 970-379-8139         |            |
| O-144 HEQB Reno FD LWD 4/14/25                       |                |   |     | Mason Dickens                                | 1                 | 775-232-5957         |            |
|  |                |   |     |  |                   |                      |            |
| C-7 ASI 12-A   |                |   |     | Jeff Harrison                                | 20                | 541-554-4789         |            |
| C-8 ASI 12-B   |                |   |     | Antonio Aguirre                              | 20                | 503-508-7344         |            |
| C-12 PatRick   |                |   |     | Garth Chambers                               | 20                | 509-899-9054         |            |
|  |                |   |     |  |                   |                      |            |
| O-158 STEN WA DNR                                    |                |   |     | Walter Escobar                               | 1                 | 509-398-1222         |            |
| O-159 STEN(t) WA DNR                                 |                |   |     | Bryan Lyle                                   | 1                 | 509-836-5500         |            |
| E-180 WA DNR   |                |   |     | Gabriel Grobben                              | 4                 | 509-675-7209         |            |
| E-181 WA DNR   |                |   |     | Jacob Wenski                                 | 4                 | 509-6756998          |            |
| E-182 WA DNR   |                |   |     | Tyler Neff                                   | 4                 | 509-675-5495         |            |
| E-183 WA DNR   |                |   |     | Matt Fisher                                  | 4                 | 360-708-5831         |            |
| E-184 WA DNR   |                |   |     | Wyatt Breezee                                | 4                 | 509-675-6761         |            |
| 6. Control Operations/Work Assignments:              |                |   |     |  |                   |                      |            |
|  |                |   |     |  |                   |                      |            |
| 7. Special Instructions:                             |                |   |     |  |                   |                      |            |
|  |                |   |     |  |                   |                      |            |
| 8. Division/Group Communication Summary              |                |   |     |  |                   |                      |            |
| D-1  | Group 1 (D-1)  | State Repeaters for that District & District Tac Channels |     |  |                   |                      |            |
| D-2  | Group 2 (D-2)  | State Repeaters for that District & District Tac Channels |     |  |                   |                      |            |
| D-9  | Group 3 (D-9)  | State Repeaters for that District & District Tac Channels |     |  |                   |                      |            |
| D-12   | Group 4 (D-12) | State Repeaters for that District & District Tac Channels |     |  |                   |                      |            |
| 9. Prepared by (Resource Unit Leader) Eve Ciotti (t) |                |   |     | Approved by (Plans Section Chief) Don Watson |                   | Date: 3/31/25        | Time: 1900 |

| <b>INCIDENT RADIO COMMUNICATIONS PLAN</b>   |                |                     | 1. Incident Name<br><b>Black Cove Complex</b> |          | 2. Date/ Time Prepared<br><b>3/31/2025 13:45:00 PM</b> |      | 3. Operational Period Date/Time<br><b>Day/Night - April 1-2, 2025</b> |   |
|---|----------------|---------------------|---|----------|--|------|---|---|
| <b>4. Basic Radio Channel Utilization</b><br><b>Mode: W=Wideband, N=Narrowband, D=Digital, M=Mixed, T=Trunked</b> |                |                     |   |          |  |      |   |   |
| Radio Type  | Channel        | Function            | Frequency                                     |          | Tone   | Mode | Assignment  | Remarks                                   |
| VHF   | TAC-1          | Tactical            | RX:   | 151.4000 | 136.5  | N    | Div- Alpha/Bravo  | Tactical Operations                       |
|   |                |                     | TX:   | 151.4000 | 136.5  |      |   |   |
| VHF   | TAC-2          | Tactical            | RX:   | 151.3100 | 136.5  | N    | Div- Charlie/Delta  | Tactical Operations                       |
|   |                |                     | TX:   | 151.3100 | 136.5  |      |   |   |
| VHF   | TAC-3          | Tactical            | RX:   | 151.2650 | 136.5  | N    | Div- Echo   | Tactical Operations                       |
|   |                |                     | TX:   | 151.2650 | 136.5  |      |   |   |
| VHF   | VCALL 10       | Tactical            | RX:   | 155.7525 | 156.7  | N    | Div- Foxtrot  | Tactical Operations                       |
|   |                |                     | TX:   | 155.7525 | 156.7  |      |   |   |
| VHF   | VTAC 11        | Tactical            | RX:   | 151.1375 | 156.7  | N    | Div- Mike   | Tactical Operations                       |
|   |                |                     | TX:   | 151.1375 | 156.7  |      |   |   |
| VHF   | VTAC 12        | Tactical            | RX:   | 154.4525 | 156.7  | N    | Div- November/Oscar/Papa  | Tactical Operations                       |
|   |                |                     | TX:   | 154.4525 | 156.7  |      |   |   |
| VHF   | VTAC 13        | Tactical            | RX:   | 158.7375 | 156.7  | N    | Spare   |   |
|   |                |                     | TX:   | 158.7375 | 156.7  |      |   |   |
| VHF   | VTAC 14        | Tactical            | RX:   | 159.4725 | 156.7  | N    | Spare   |   |
|   |                |                     | TX:   | 159.4725 | 156.7  |      |   |   |
| VHF   | VFIRE 25       | Tactical            | RX:   | 154.2875 | 156.7  | N    | Spare   |   |
|   |                |                     | TX:   | 154.2875 | 156.7  |      |   |   |
| VHF   | Command        | Command             | RX:   | 151.2200 | 136.5  | N    | Operations to All Fires   | Operational Communications                |
|   |                |                     | TX:   | 159.3450 | 131.8  |      |   |   |
| VHF   | A-G Primary    | Air to Ground       | RX:   | 171.5750 | 131.8  | N    | A-G Primary   | Air to Ground Communications              |
|   |                |                     | TX:   | 171.5750 | 131.8  |      |   |   |
| VHF   | A-G Secondary  | Air to Ground       | RX:   | 172.2750 | 131.8  | N    | A-G Secondary   | Air to Ground Communications              |
|   |                |                     | TX:   | 172.2750 | 131.8  |      |   |   |
| VIPER   | Events Delta 4 | Tactical            | RX:   | 800Mhz   |  | T    | NC Hart Operations  | Medivac Helo                              |
|   |                |                     | TX:   | 800Mhz   |  |      |   |   |
| VHF   | NC State Fire  | NC Hart Contingency | RX:   | 154.2800 | None   | N    | NC Hart Contingency   | Used only if Events Delta 4 is inoperable |
|   |                |                     | TX:   | 154.2800 | None   |      |   |   |
|   |                |                     | RX:   |          |  |      |   |   |
|   |                |                     | TX:   |          |  |      |   |   |
| VHF   | Air Guard      | Air Guard           | RX:   | 168.6250 | None   | N    | USFS Air Guard Channel  |   |
|   |                |                     | TX:   | 168.6250 | 110.9  |      |   |   |
| 5. Prepared by (Communications Unit)<br>Jimmy Meadows COML  |                |                     |   |          |  |      |   |   |

|   |                |             |  |          |   |      |  |   |
|---|----------------|-------------|--|----------|---|------|--|---|
| INCIDENT RADIO COMMUNICATIONS PLAN  |                |             | 1. Incident Name<br>Black Cove Complex |          | 2. Date/ Time Prepared<br>3/31/2025 17:00:00 PM |      | 3. Operational Period Date/Time<br>Day/Night - April 1-2, 2025 |   |
| 4. Basic Radio Channel Utilization<br>Mode: W=Wideband, N=Narrowband, D=Digital, M=Mixed, T=Trunked |                |             |  |          |   |      |  |   |
| Radio Type  | Channel        | Function    | Frequency                              |          | Tone  | Mode | Assignment   | Remarks                                   |
| Viper   | Events Delta 1 | Tactical    | RX:                                    | 800Mhz   |   | T    | Black Cove Structure Protection                                | FD/VFD Tactical Operations                |
|   |                |             | TX:                                    | 800Mhz   |   |      |  |   |
| Viper   | Events Delta 2 | Tactical    | RX:                                    | 800Mhz   |   | T    | Deep Woods Structure Protection                                | FD/VFD Tactical Operations                |
|   |                |             | TX:                                    | 800Mhz   |   |      |  |   |
| Viper   | Events Delta 3 | Tactical    | RX:                                    | 800Mhz   |   | T    | Security   | Security Operations                       |
|   |                |             | TX:                                    | 800Mhz   |   |      |  |   |
| Viper   | Events Delta 4 | Tactical    | RX:                                    | 800Mhz   |   | T    | NC Hart Operations   | Medivac Helo                              |
|   |                |             | TX:                                    | 800Mhz   |   |      |  |   |
| VHF   | NC State Fire  | Contingency | RX:                                    | 154.2800 | None  | N    | NC Hart Contingency  | Used only if Events Delta 4 is inoperable |
|   |                |             | TX:                                    | 154.2800 | None  |      |  |   |
|   |                |             | RX:                                    |          |   |      |  |   |
|   |                |             | TX:                                    |          |   |      |  |   |
|   |                |             | RX:                                    |          |   |      |  |   |
|   |                |             | TX:                                    |          |   |      |  |   |
|   |                |             | RX:                                    |          |   |      |  |   |
|   |                |             | TX:                                    |          |   |      |  |   |
|   |                |             | RX:                                    |          |   |      |  |   |
|   |                |             | TX:                                    |          |   |      |  |   |
|   |                |             | RX:                                    |          |   |      |  |   |
|   |                |             | TX:                                    |          |   |      |  |   |
|   |                |             | RX:                                    |          |   |      |  |   |
|   |                |             | TX:                                    |          |   |      |  |   |
|   |                |             | RX:                                    |          |   |      |  |   |
|   |                |             | TX:                                    |          |   |      |  |   |
|   |                |             | RX:                                    |          |   |      |  |   |
|   |                |             | TX:                                    |          |   |      |  |   |
|   |                |             | RX:                                    |          |   |      |  |   |
|   |                |             | TX:                                    |          |   |      |  |   |
|   |                |             | RX:                                    |          |   |      |  |   |
|   |                |             | TX:                                    |          |   |      |  |   |
|   |                |             | RX:                                    |          |   |      |  |   |
|   |                |             | TX:                                    |          |   |      |  |   |

5. Prepared by (Communications Unit)  
Jimmy Meadows COML

|                                     |  |                         |                       |                      |                     |  |
|-------------------------------------|--|-------------------------|-----------------------|----------------------|---------------------|--|
| <b>AIR OPERATIONS SUMMARY 220</b>   | Prepared By: Efraim Garcia                     | Prepared: 3/31/25       | Based on 550 datum    |                      |                     |  |
| <b>1. INCIDENT NAME: Black Cove</b> | <b>2. OPERATIONAL PERIOD</b><br><b>4/01/25</b> | <b>START TIME: 0900</b> | <b>END TIME: 2000</b> | <b>SUNRISE: 0714</b> | <b>SUNSET: 1949</b> |  |

|   |   |   |
|---|---|---|
| <b>3. REMARKS:</b> (Safety Notes, Hazards, etc.)<br><br>Rutherford County Airport, (KFQD) 35 25.69 X 81 56.11<br>110 Marchman Field Drive<br>Rutherfordton NC 28139<br><br>Costs to: <a href="mailto:ncfs.imt.finance@ncagr.gov">ncfs.imt.finance@ncagr.gov</a><br>cc: mkerrigan1@verizon.net<br>cc: jnobles524@aol.com | <b>4. READY ALERT AIRCRAFT:</b><br><br>NG Hoist 660 Available Ashville<br>Airport. Available until 1900 | <b>5. TFR 5/9498</b><br>TFR Frequency 126.3250<br><br>NOTAMS: |
|---|---|---|

| 6. PERSONNEL   | NAME             | PHONE #      | 7. FREQUENCIES        | AM       | FM                                       | 8A. FIXED-WING Ordering   |
|----------------|------------------|--------------|-----------------------|----------|--|---|
| <b>AOBD</b>    | Mike Kerrigan    | 716-957-4705 | A/A (Initial Contact) | 126.3250 |  | AIRTANKERS/LEAD PLANES/SEATS: Order Via ATGS /OPS   |
| <b>HEBM</b>    | John Nobles      | 239-777-8455 | A/A (Secondary)       | 121.2750 |  | 8B. Aerial Supervision / Personnel / Location<br>AVL/ Helibase out of KFQD  |
| <b>ASGS</b>    | Efraim Garcia    | 619-517-2184 | A/G Primary           |          | 171.5750 Tx<br>171.5750 Rx<br>Tone 131.8 | AIR ATTACK Platforms: None Assigned Order via Ashville NC-ICC<br><br>Initial Contact/ Emergency Frequency<br>Air Guard:168.6250 Rx/168.6250 Tx Tone 110.9 |
| <b>HN40HX</b>  | Bill Carothers   | 828-273-4327 | A/G Secondary         |          | 172.2750 Tx<br>172.2750 Rx<br>Tone 131.8 |   |
| <b>H47KT</b>   | Dominic Leal     | 541-219-1984 |                       |          |  |   |
| <b>HB227AJ</b> | Anthony Kornegay | 910-289-8819 |                       |          |  |   |
| <b>N101HX</b>  | Daniel Voetner   | 815-988-9436 | Deck                  |          | 163.100                                  |   |
|                |                  |              |                       |          |  |   |

**9. HELICOPTERS:** (Order through ATGS or Operations)


| FAA N#        | TY | MAKE/MODEL  | BASE | START | AVAIL | REMARKS               | FAA N#  | TY | MAKE/MODEL | BASE | START | AVAIL | REMARKS |
|---------------|----|-------------|------|-------|-------|-----------------------|---------|----|------------|------|-------|-------|---------|
| <b>40HX</b>   | 1  | K Max K1200 | KFQD | 0900  | 0930  | Bucket                | HB227AJ | 1  | CH-47D     | KFQD | 0900  | 0930  | Tanked  |
| <b>N101HX</b> | 2  | Bell 412    | KFQD | 0900  | 0930  | PAX, Bucket, Longline |         |    |            |      |       |       |         |
| <b>H47KT</b>  | 3  | Bell 407    | KFQD | 0900  | 0930  | Pax, PSD, Longline    |         |    |            |      |       |       |         |

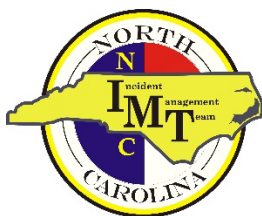


## MEDICAL PLAN (ICS 206)

|   |  |  |  |                             |   |  |  |
|---|--|--|--|-----------------------------|---|--|--|
| <b>1. Incident Name:</b><br>Black Cove Complex  |  | <b>2. Operational Period:</b> Date From: 04/01/2025 Date To: 08:00<br>Time From: 04/02/2025 Time To: 08:00 |  |                             |   |  |  |
| <b>3. Medical Aid Stations:</b>   |  |  |  |                             |   |  |  |
| Name  | Location   | Contact Number(s)/Frequency  | Paramedics on Site?  |                             |   |  |  |
| Medical Station   | Tryon Equestrian Center Staging Area                 | Command  | <input type="checkbox"/> Yes <input type="checkbox"/> No             |                             |   |  |  |
|   |  |  | <input type="checkbox"/> Yes <input type="checkbox"/> No             |                             |   |  |  |
|   |  |  | <input type="checkbox"/> Yes <input type="checkbox"/> No             |                             |   |  |  |
|   |  |  | <input type="checkbox"/> Yes <input type="checkbox"/> No             |                             |   |  |  |
|   |  |  | <input type="checkbox"/> Yes <input type="checkbox"/> No             |                             |   |  |  |
|   |  |  | <input type="checkbox"/> Yes <input type="checkbox"/> No             |                             |   |  |  |
| <b>4. Transportation (indicate air or ground):</b>  |  |  |  |                             |   |  |  |
| Ambulance Service   | Location   | Contact Number(s)/Frequency  | Level of Service   |                             |   |  |  |
| Cabarrus County EMS   | Div A/B Big Hungry Rd (D) / Staging Medical Unit (N) | Delta 1 (800)/ Command   | <input checked="" type="checkbox"/> ALS <input type="checkbox"/> BLS |                             |   |  |  |
| Union County EMS Med-75   | Div D/E/F/M - Saluda Truck Stop Exit 59              | D/E/F- Delta 1/ M-Delta 2 / Command  | <input checked="" type="checkbox"/> ALS <input type="checkbox"/> BLS |                             |   |  |  |
| Iredell County EMS-438  | Div N/O/P  | Delta 2 (800) / Command  | <input checked="" type="checkbox"/> ALS <input type="checkbox"/> BLS |                             |   |  |  |
|   |  |  | <input type="checkbox"/> ALS <input type="checkbox"/> BLS            |                             |   |  |  |
| <b>5. Hospitals:</b>  |  |  |  |                             |   |  |  |
| Hospital Name   | Address, Latitude & Longitude if Helipad             | Contact Number(s)/Frequency  | Travel Time  |                             | Trauma Center                                       | Burn Center  | Helipad  |
|   |  |  | Air  | Ground                      |   |  |  |
| Advent Health   | 101 Hospital Dr<br>Columbus, NC 28722                |  |  |                             | <input type="checkbox"/> Yes<br>Level: _____        | <input type="checkbox"/> Yes<br><input checked="" type="checkbox"/> No | <input checked="" type="checkbox"/> Yes<br><input type="checkbox"/> No |
| Pardee Hospital   | 800 N Justice St<br>Hendersonville, NC               |  |  |                             | <input type="checkbox"/> Yes<br>Level: _____        | <input type="checkbox"/> Yes<br><input checked="" type="checkbox"/> No | <input checked="" type="checkbox"/> Yes<br><input type="checkbox"/> No |
| Mission Hospital  | 509 Biltmore Ave<br>Asheville, NC                    |  |  |                             | <input checked="" type="checkbox"/> Yes<br>Level: 2 | <input type="checkbox"/> Yes<br><input checked="" type="checkbox"/> No | <input checked="" type="checkbox"/> Yes<br><input type="checkbox"/> No |
| Spartanburg Regional Health   | 101 E Wood St<br>Spartanburn, SC                     |  |  |                             | <input checked="" type="checkbox"/> Yes<br>Level: 1 | <input type="checkbox"/> Yes<br><input checked="" type="checkbox"/> No | <input checked="" type="checkbox"/> Yes<br><input type="checkbox"/> No |
| Atrium Health Wake Forest Ba  | 1 Medical Center Dr<br>Winston-Salem, NC             | Burn Center Acces<br>336-716-7654  | 58   |                             | <input checked="" type="checkbox"/> Yes<br>Level: 1 | <input checked="" type="checkbox"/> Yes<br><input type="checkbox"/> No | <input checked="" type="checkbox"/> Yes<br><input type="checkbox"/> No |
| <b>6. Special Medical Emergency Procedures:</b> <ul style="list-style-type: none"> <li>• Provide medical attention as quickly as possible and establish an Incident Within Incident IC, (IWI IC).</li> <li>• IWI IC will call communications on Command.</li> <li>• Report all accidents/injuries to supervisor immediately.</li> <li>• If needed, transport patient to road accessible by ambulance.</li> <li>• DO NOT use the patients name or their call sign over the radio.</li> <li>• Use 214 to document the incident after the incident has stabilized</li> </ul> |  |  |  |                             |   |  |  |
| <input checked="" type="checkbox"/> Check box if aviation assets are utilized for rescue. If assets are used, coordinate with Air Operations.   |  |  |  |                             |   |  |  |
| <b>7. Prepared by (Medical Unit Leader):</b> Name: Douglas Powell MEDL(t) Signature: Douglas R. Powell  |  |  |  |                             |   |  |  |
| <b>8. Approved by (Safety Officer):</b> Name: Robbie Perry Signature:   |  |  |  |                             |   |  |  |
| ICS 206   |  | IAP Page 1 of 2  |  | Date/Time: 03/31/2025 18:00 |   |  |  |

## MEDICAL PLAN (ICS 206)

| <b>1. Incident Name:</b><br>Black Cove Complex  |  | <b>2. Operational Period:</b> Date From: 04/01/2025 Date To: 08:00<br>Time From: 04/02/2025 Time To: 08:00 |  |                             |   |  |  |
|---|--|--|--|-----------------------------|---|--|--|
| <b>3. Medical Aid Stations:</b>   |  |  |  |                             |   |  |  |
| Name  | Location                                 | Contact Number(s)/Frequency  | Paramedics on Site?  |                             |   |  |  |
| Medical Station   | Tryon Equestrian Center Staging Area     | Command  | <input checked="" type="checkbox"/> Yes <input type="checkbox"/> No  |                             |   |  |  |
|   |  |  | <input type="checkbox"/> Yes <input type="checkbox"/> No             |                             |   |  |  |
|   |  |  | <input type="checkbox"/> Yes <input type="checkbox"/> No             |                             |   |  |  |
|   |  |  | <input type="checkbox"/> Yes <input type="checkbox"/> No             |                             |   |  |  |
|   |  |  | <input type="checkbox"/> Yes <input type="checkbox"/> No             |                             |   |  |  |
|   |  |  | <input type="checkbox"/> Yes <input type="checkbox"/> No             |                             |   |  |  |
| <b>4. Transportation (indicate air or ground):</b>  |  |  |  |                             |   |  |  |
| Ambulance Service   | Location                                 | Contact Number(s)/Frequency  | Level of Service   |                             |   |  |  |
| Regional-One Air  | Spartanburg, SC                          | 866-682-7747   | <input checked="" type="checkbox"/> ALS <input type="checkbox"/> BLS |                             |   |  |  |
| Mountain Air Medical Air  | Asheville, NC                            | 828-213-0900   | <input checked="" type="checkbox"/> ALS <input type="checkbox"/> BLS |                             |   |  |  |
|   |  |  | <input type="checkbox"/> ALS <input type="checkbox"/> BLS            |                             |   |  |  |
|   |  |  | <input type="checkbox"/> ALS <input type="checkbox"/> BLS            |                             |   |  |  |
| <b>5. Hospitals:</b>  |  |  |  |                             |   |  |  |
| Hospital Name   | Address, Latitude & Longitude if Helipad | Contact Number(s)/Frequency  | Travel Time  |                             | Trauma Center                                       | Burn Center  | Helipad  |
|   |  |  | Air  | Ground                      |   |  |  |
| Advent Health   | 101 Hospital Dr<br>Columbus, NC 28722    |  |  |                             | <input type="checkbox"/> Yes<br>Level: _____        | <input type="checkbox"/> Yes<br><input checked="" type="checkbox"/> No | <input checked="" type="checkbox"/> Yes<br><input type="checkbox"/> No |
| Pardee Hospital   | 800 N Justice St<br>Hendersonville, NC   |  |  |                             | <input type="checkbox"/> Yes<br>Level: _____        | <input type="checkbox"/> Yes<br><input checked="" type="checkbox"/> No | <input checked="" type="checkbox"/> Yes<br><input type="checkbox"/> No |
| Mission Hospital  | 509 Biltmore Ave<br>Asheville, NC        |  |  |                             | <input checked="" type="checkbox"/> Yes<br>Level: 2 | <input type="checkbox"/> Yes<br><input checked="" type="checkbox"/> No | <input checked="" type="checkbox"/> Yes<br><input type="checkbox"/> No |
| Spartanburg Regional Health   | 101 E Wood St<br>Spartanburn, SC         |  |  |                             | <input checked="" type="checkbox"/> Yes<br>Level: 1 | <input type="checkbox"/> Yes<br><input checked="" type="checkbox"/> No | <input checked="" type="checkbox"/> Yes<br><input type="checkbox"/> No |
| Atrium Health Wake Forest Ba  | 1 Medical Center Dr<br>Winston-Salem, NC | Burn Center Acces  | 58   |                             | <input checked="" type="checkbox"/> Yes<br>Level: 1 | <input checked="" type="checkbox"/> Yes<br><input type="checkbox"/> No | <input checked="" type="checkbox"/> Yes<br><input type="checkbox"/> No |
| <b>6. Special Medical Emergency Procedures:</b>   |  |  |  |                             |   |  |  |
| <ul style="list-style-type: none"> <li>• Provide medical attention as quickly as possible and establish an Incident Within Incident IC, (IWI IC).</li> <li>• IWI IC will call communications on Command.</li> <li>• Report all accidents/injuries to supervisor immediately.</li> <li>• If needed, transport patient to road accessible by ambulance.</li> <li>• DO NOT use the patients name or their call sign over the radio.</li> <li>• Use 214 to document the incident after the incident has stabilized</li> </ul> |  |  |  |                             |   |  |  |
| <input checked="" type="checkbox"/> Check box if aviation assets are utilized for rescue. If assets are used, coordinate with Air Operations.   |  |  |  |                             |   |  |  |
| <b>7. Prepared by (Medical Unit Leader):</b> Name: <u>Douglas Powell MEDL(t)</u> Signature: <u>Douglas R. Powell</u> <small>Digitally signed by Douglas R. Powell 2025.03.31 17:36:52 -0400</small>   |  |  |  |                             |   |  |  |
| <b>8. Approved by (Safety Officer):</b> Name: <u>Robbie Perry</u> Signature:   |  |  |  |                             |   |  |  |
| ICS 206   |  | IAP Page 2 of 2  |  | Date/Time: 03/31/2025 18:00 |   |  |  |



## **BLACK COVE COMPLEX INCIDENT WITHIN AN INCIDENT (IWI) IAP PROCEDURES FOR OPERATIONAL RESOURCES**

In the event of a medical emergency or other emergency that would be considered an incident within an incident the following procedures will be followed:

1. Secure the scene and victim to prevent further injury and provide emergency medical treatment (first aid.)
2. Establish IWI IC. This is usually someone who can assume command and is not rendering treatment to the victim. This IWI IC will remain in command until the IWI is considered complete.
3. IWI IC will transmit via radio to the incident ICP that there is an emergency. The transmission will begin with "MAYDAY MAYDAY MAYDAY." Once this transmission has been made, all radio traffic on the command frequency will cease other than those who are communicating about the IWI. **In the event that the Communications Unit is unable to be raised on the command channel, IWI IC will contact the Operations Section Chief to get assistance as soon as possible to the injured party.**
4. The IWI IC will communicate details of the emergency using the Medical Plan (ICS 206 WF) 8-line report located in the back of the IAP.
5. The Communications Unit will notify the Safety Officer of the IWI. The Communications Unit will also contact local EMS via 911 and provide EMS with accurate information such as type of injury/accident, location, etc.
6. The Safety Officer will at that time notify the Command and General Staff of the IWI via the GroupMe App.
7. Command and General Staff will come together in the Communications Unit to gather information until the IWI is complete.

# MEDICAL PLAN (ICS 206 WF)

Controlled Unclassified Information//Basic

## Medical Incident Report

**FOR A NON-EMERGENCY INCIDENT, WORK THROUGH CHAIN OF COMMAND TO REPORT AND TRANSPORT INJURED PERSONNEL AS NECESSARY.**

**FOR A MEDICAL EMERGENCY: IDENTIFY ON SCENE INCIDENT COMMANDER BY NAME AND POSITION AND ANNOUNCE "MEDICAL EMERGENCY" TO INITIATE RESPONSE FROM IMT COMMUNICATIONS/DISPATCH.**

Use the following items to communicate situation to communications/dispatch.

1. CONTACT COMMUNICATIONS / DISPATCH (Verify correct frequency prior to starting report)

Ex: "Communications, Div. Alpha. Stand-by for Emergency Traffic."

2. INCIDENT STATUS: Provide incident summary (including number of patients) and command structure.

Ex: "Communications, I have a Red priority patient, unconscious, struck by a falling tree. Requesting air ambulance to Forest Road 1 at (Lat./Long.) This will be the Trout Meadow Medical, IC is TFLD Jones. EMT Smith is providing medical care."

|   |  |   |
|---|--|---|
| Severity of Emergency / Transport Priority        | <input type="checkbox"/> RED / PRIORITY 1 Life or limb threatening injury or illness. Evacuation need is IMMEDIATE<br>Ex: Unconscious, difficulty breathing, bleeding severely, 2° – 3° burns more than 4 palm sizes, heat stroke, disoriented.<br><input type="checkbox"/> YELLOW / PRIORITY 2 Serious Injury or illness. Evacuation may be DELAYED if necessary.<br>Ex: Significant trauma, unable to walk, 2° – 3° burns not more than 1-3 palm sizes.<br><input type="checkbox"/> GREEN / PRIORITY 3 Minor Injury or illness. Non-Emergency transport<br>Ex: Sprains, strains, minor heat-related illness. |   |
| Nature of Injury or Illness & Mechanism of Injury |  | Brief Summary of Injury or Illness<br>(Ex: Unconscious, Struck by Falling Tree) |
| Transport Request                                 |  | Air Ambulance / Short Haul/Hoist<br>Ground Ambulance / Other                    |
| Patient Location                                  |  | Descriptive Location & Lat. / Long. (WGS84)                                     |
| Incident Name                                     |  | Geographic Name + "Medical"<br>(Ex: Trout Meadow Medical)                       |
| On-Scene Incident Commander                       |  | Name of on-scene IC of Incident within an Incident (Ex: TFLD Jones)             |
| Patient Care                                      |  | Name of Care Provider<br>(Ex: EMT Smith)  |

3. INITIAL PATIENT ASSESSMENT: Complete this section for each patient as applicable (start with the most severe patient)

Patient Assessment: See IRPG page 106

Treatment:

4. TRANSPORT PLAN:

Evacuation Location (if different): (Descriptive Location (drop point, intersection, etc.) or Lat. / Long.) Patient's ETA to Evacuation Location:

Helispot / Extraction Site Size and Hazards:

5. ADDITIONAL RESOURCES / EQUIPMENT NEEDS:

Example: Paramedic/EMT, Crews, Immobilization Devices, AED, Oxygen, Trauma Bag, IV/Fluid(s), Splints, Rope rescue, Wheeled litter, HAZMAT, Extrication

6. COMMUNICATIONS: Identify State Air/Ground EMS Frequencies and Hospital Contacts as applicable

| Function    | Channel Name/Number | Receive (RX) | Tone/NAC * | Transmit (TX) | Tone/NAC * |
|-------------|---------------------|--------------|------------|---------------|------------|
| COMMAND     |                     |              |            |               |            |
| AIR-TO-GRND |                     |              |            |               |            |
| TACTICAL    |                     |              |            |               |            |

7. CONTINGENCY: Considerations: If primary options fail, what actions can be implemented in conjunction with primary evacuation method? Be thinking ahead.

8. ADDITIONAL INFORMATION: Updates/Changes, etc.

**REMEMBER:** Confirm ETA's of resources ordered. Act according to your level of training. Be Alert. Keep Calm. Think Clearly. Act Decisively.



# FINANCE

Fiori Time Code G, T, F 1505

[ncfs.imt.finance@ncagr.gov](mailto:ncfs.imt.finance@ncagr.gov)

Submit legible copy of CTR/Shift Ticket daily, email or paper copy acceptable.

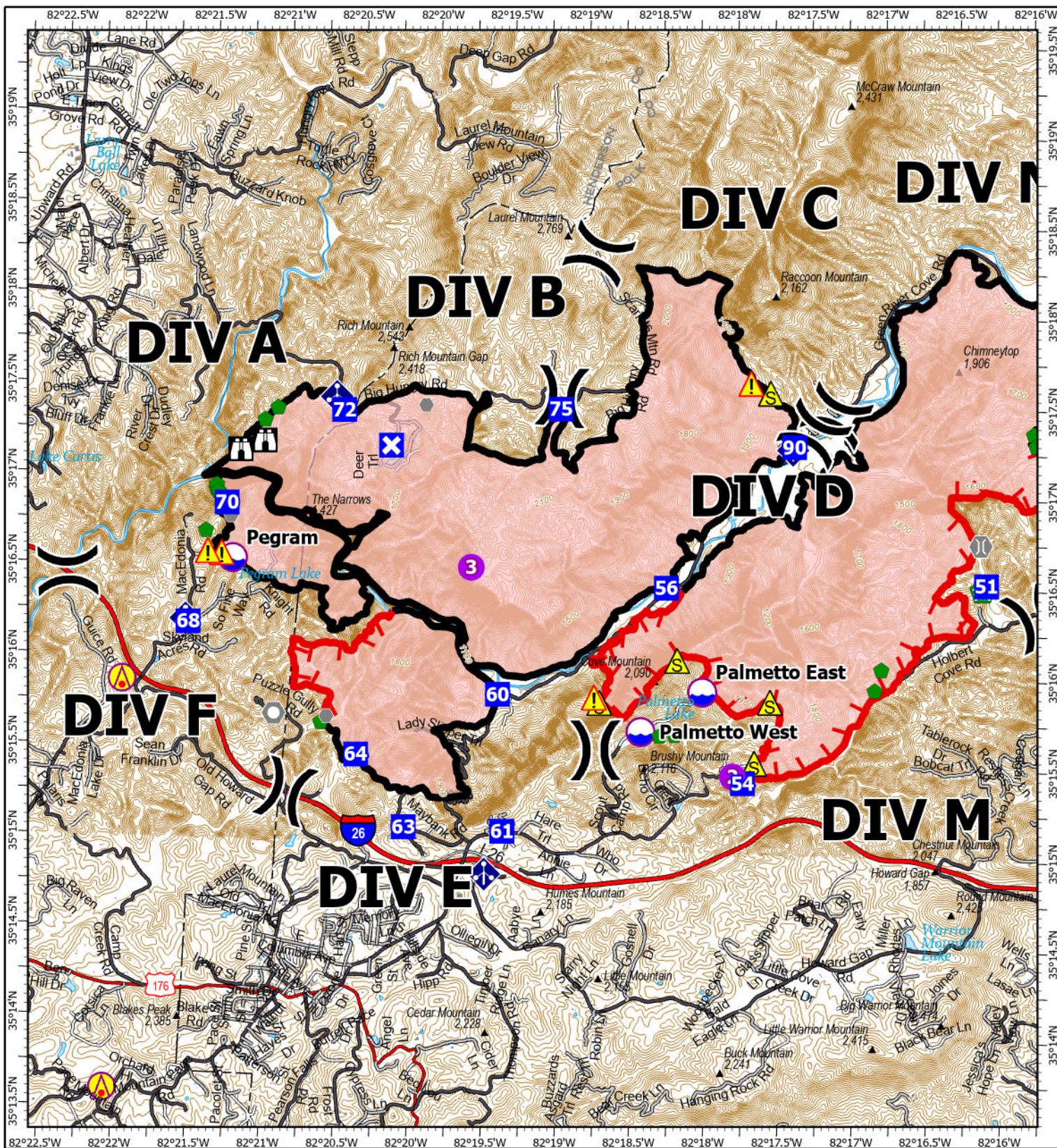
- Include Full Legal Name
- Resource #
- Must have Supervisor signature
- Use actual hours of equipment use on the shift tickets

Please email or bring the following to FINANCE after you check in:

- Agreement or contract
- Equipment inspection
- Roster/manifest
- Casual Hire Form







# IAP

Black Cove  
NC-NCS-250019  
4/1/2025 Day

3,502 acres at 03/30/2025 @ 16:15 hrs

0 0.25 0.5 1

Miles

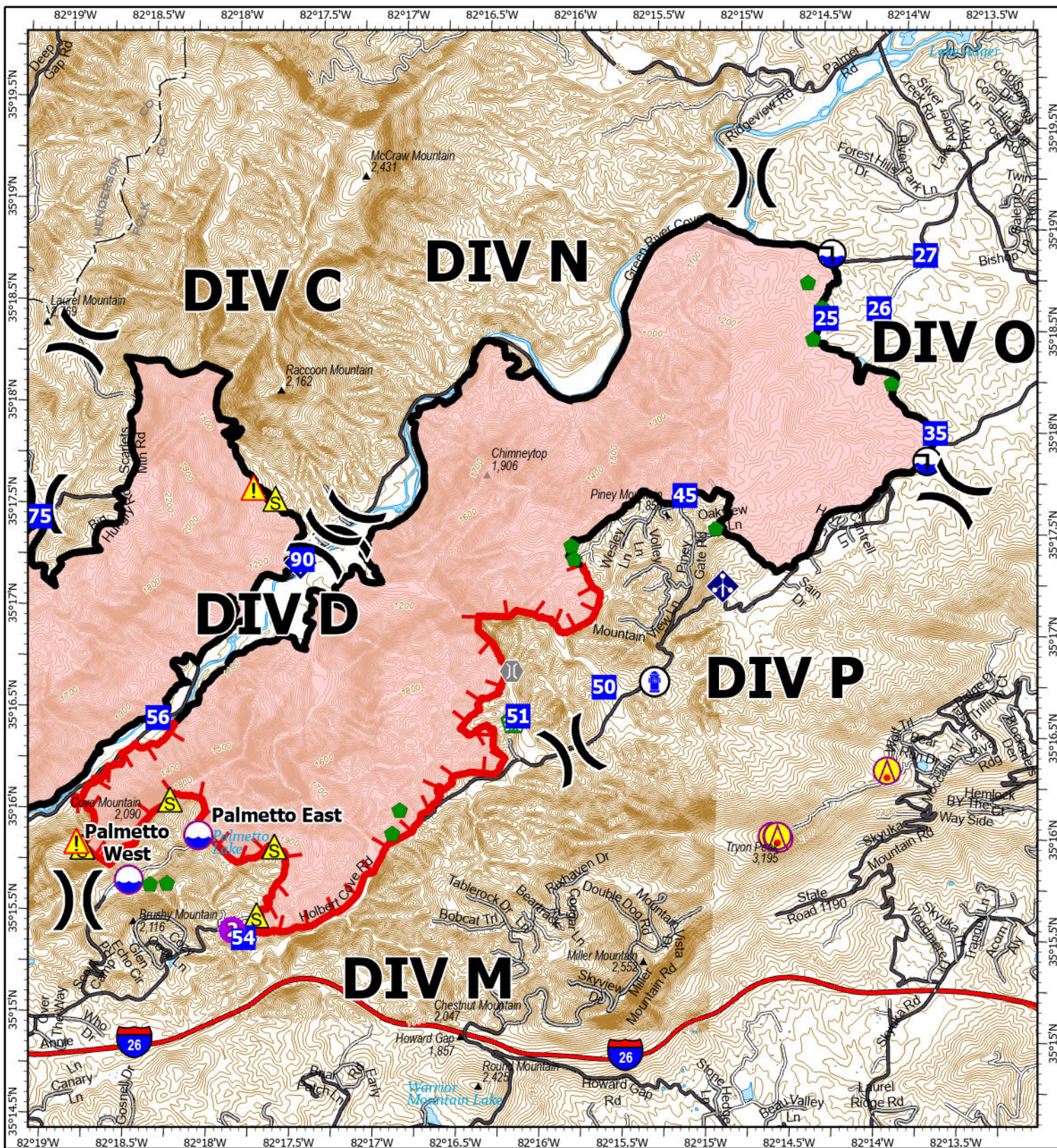
1:54,000 | NCFS | 3/31/2025 1743

North American 1983 Datum, LatLong Grid



- |                       |                     |
|-----------------------|---------------------|
| Wildfire Perimeter    | Drop Point          |
| Contained Fire Edge   | Closure             |
| Uncontained Fire Edge | Dip Site            |
| Gap; Summit           | Mobile Weather Unit |
| Division Break        | Other               |
| Safety Zone           | Landmark            |
| Hazard                | Bridge              |
| Aerial Hazard         | Stream Crossing     |
| Helispot              | Repair Point        |
| Lookout               | Structure FEMA      |





## IAP

Deep Woods  
NC-NCS-250021  
4/1/2025 Day

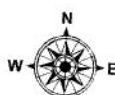
3,969 acres at 03/30/2025 @ 16:15 hrs

0 0.25 0.5 1

Miles

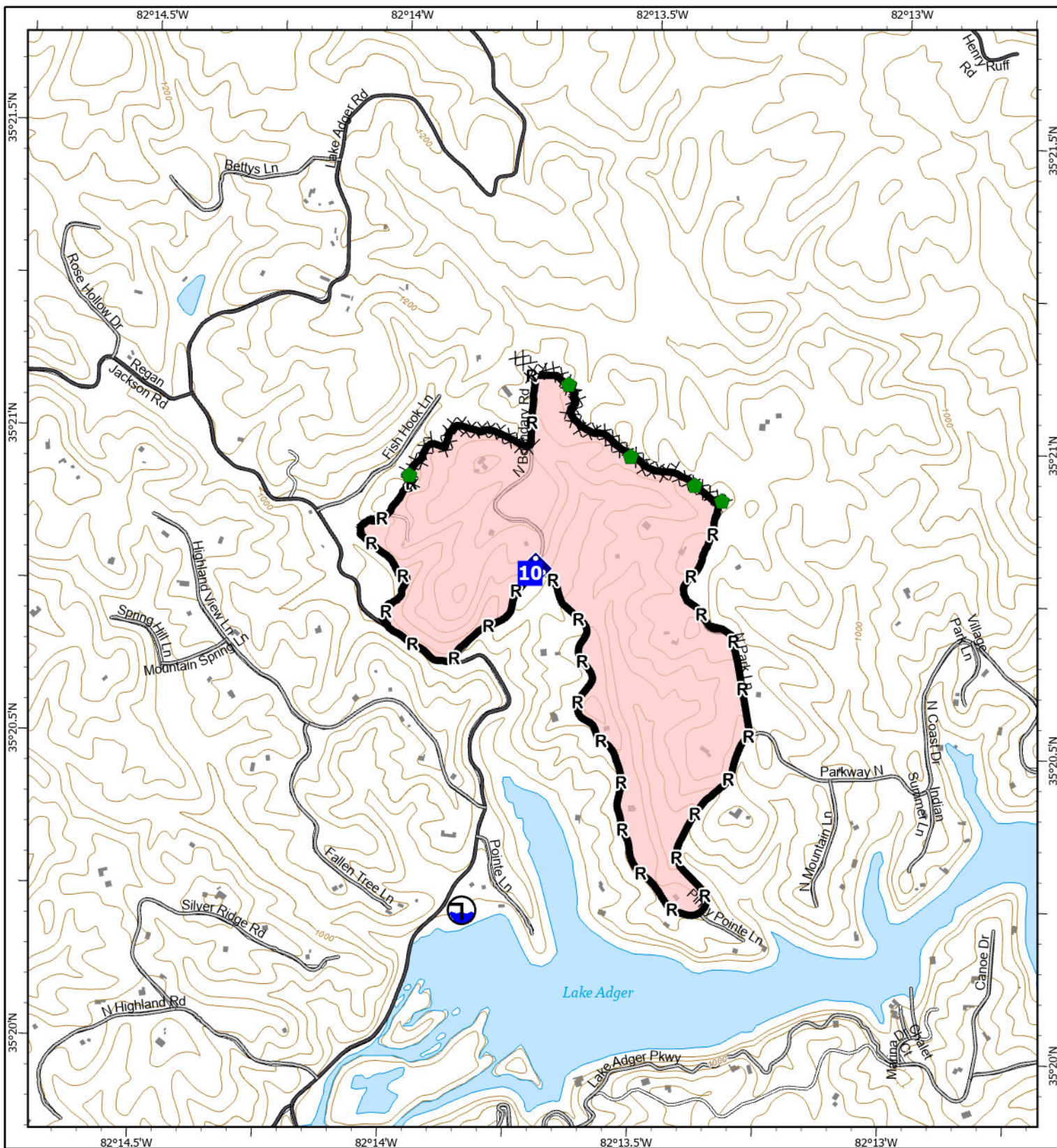
1:48,000 | NCFS | 3/31/2025 1743

North American 1983 Datum, LatLong Grid



- Wildfire Perimeter
- Contained Fire Edge
- Uncontained Fire Edge
- ▲ Gap; Summit
- X Division Break
- ▲ Safety Zone
- ▲ Hazard
- ▲ Aerial Hazard
- Helispot
- Drop Point
- Dip Site
- Draft Site
- Hydrant
- Mobile Weather Unit
- Bridge
- Stream Crossing
- Repair Point
- Structure FEMA





**IAP**

**Fish Hook**  
**NC-NCS-250024**  
**4/1/2025 Day**

199 acres at 03/22/2025 @ 11:30 hrs

0 0.25 0.5

Miles

1:16,000 | NCFS | 3/31/2025 1744

North American 1983 Datum, LatLong Grid



- Wildfire Perimeter
- Contained Fire Edge
- Drop Point
- Draft Site
- Mobile Weather Unit

- Repair Point
- Completed Dozer Line
- Completed Road as Line
- Structure FEMA



04/01/2025

TENTATIVE RELEASE

BLACK COVE US-NC-NCS-250019

**EQUIPMENT**

|        |      |        |                                |
|--------|------|--------|--------------------------------|
| E-2061 | 0800 | (PUP2) | 48990W PUPPY CREEK FD TRUCK 39 |
|--------|------|--------|--------------------------------|

**OVERHEAD**

|      |      |        |                      |
|------|------|--------|----------------------|
| O-22 | 1300 | (SMOD) | SMOD - ELDORADO CREW |
|------|------|--------|----------------------|

|       |      |        |                |
|-------|------|--------|----------------|
| O-112 | 1800 | (PIO3) | MAGUIRE, PATTI |
|-------|------|--------|----------------|

## ACTIVITY LOG (ICS 214)

[illegible]