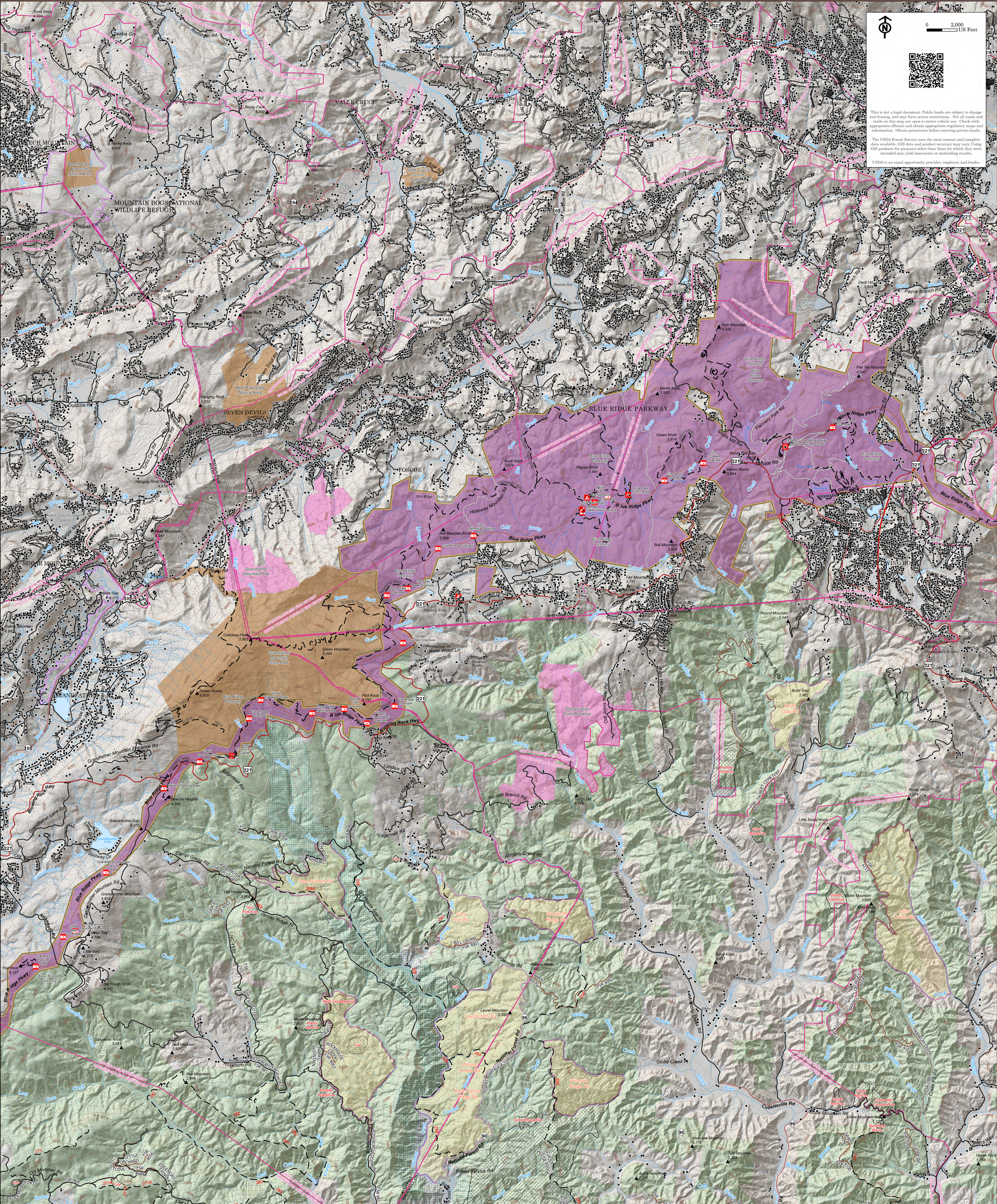


This is not a legal document. Public lands are subject to change and leasing, and may have access restrictions. Not all roads and trails on this map are open to motor vehicle use. Check with appropriate officials and obtain appropriate regulatory maps and information. Obtain permission before entering private lands.

The USDA Forest Service uses the most current and complete data available. GIS data and product accuracy may vary. Using GIS products for purposes other than those for which they were intended may yield inaccurate or misleading results.

USDA is an equal opportunity provider, employer, and lender.



Forest Service Land	State	Completed Hand Line	Day Use Area	Trail	Secondary Highway	USFS Roads (online)
Historic Wildfires (online)	Non-Governmental Organization	NC Airports and Heliports (online)	Point of Interest	Trail	Paved Roads	Gravel Road
Rx Burns	Other Conserved Lands	TRAILHEAD	Viewpoint	Roads (non-USFS)	Dirt (Not Paved)	High Clearance Road
Wild and Scenic River	Fire Districts (online)	Campground	Visitor Center	Primary Highway	Closed Road	
Federal	Structures (online)					