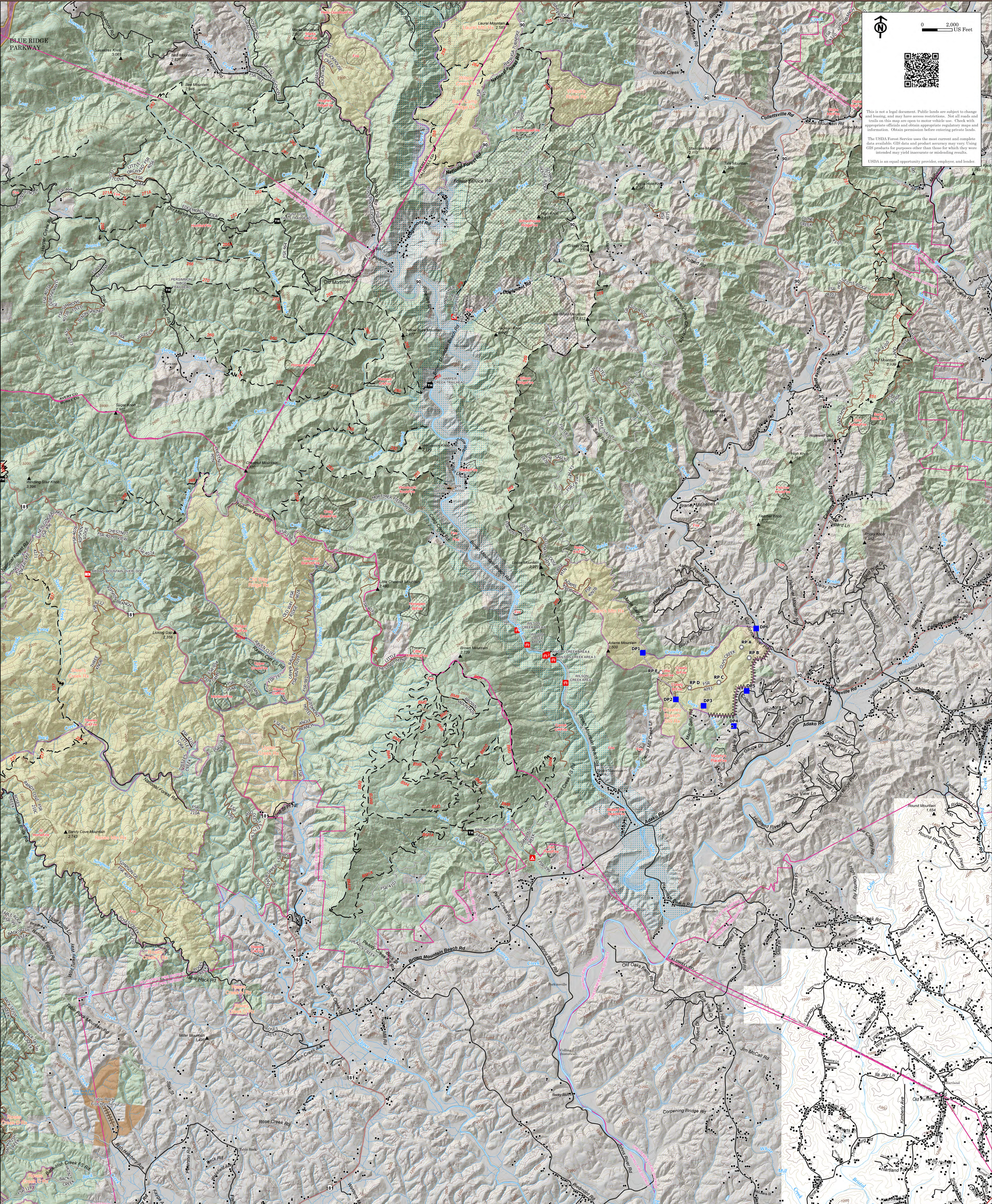


This is not a legal document. Public lands are subject to change and leasing, and may have access restrictions. Not all roads and trails on this map are open to motor vehicle use. Check with appropriate officials and obtain appropriate regulatory maps and information. Obtain permission before entering private lands.

The USDA Forest Service uses the most current and complete data available. GIS data and product accuracy may vary. Using GIS products for purposes other than those for which they were intended may yield inaccurate or misleading results.

USDA is an equal opportunity provider, employer, and lender.



Forest Service Land	Federal	Drop Point	DAY USE AREA	Trail	Paved Roads	High Clearance Road
Historic Wildfires (online)	State	Landmark	OBSERVATION SITE	Roads (non-USFS)	Dirt (Not Paved)	Closed Road
Rx Burns	Fire Districts (online)	Completed Fuel Break	Structures (online)	Primary Highway	USFS Roads (online)	Unspecified Road
Wild and Scenic River	Structures (online)	CAMPGROUND	TRAILHEAD	Secondary Highway	Gravel Road	