


0 500 US Feet

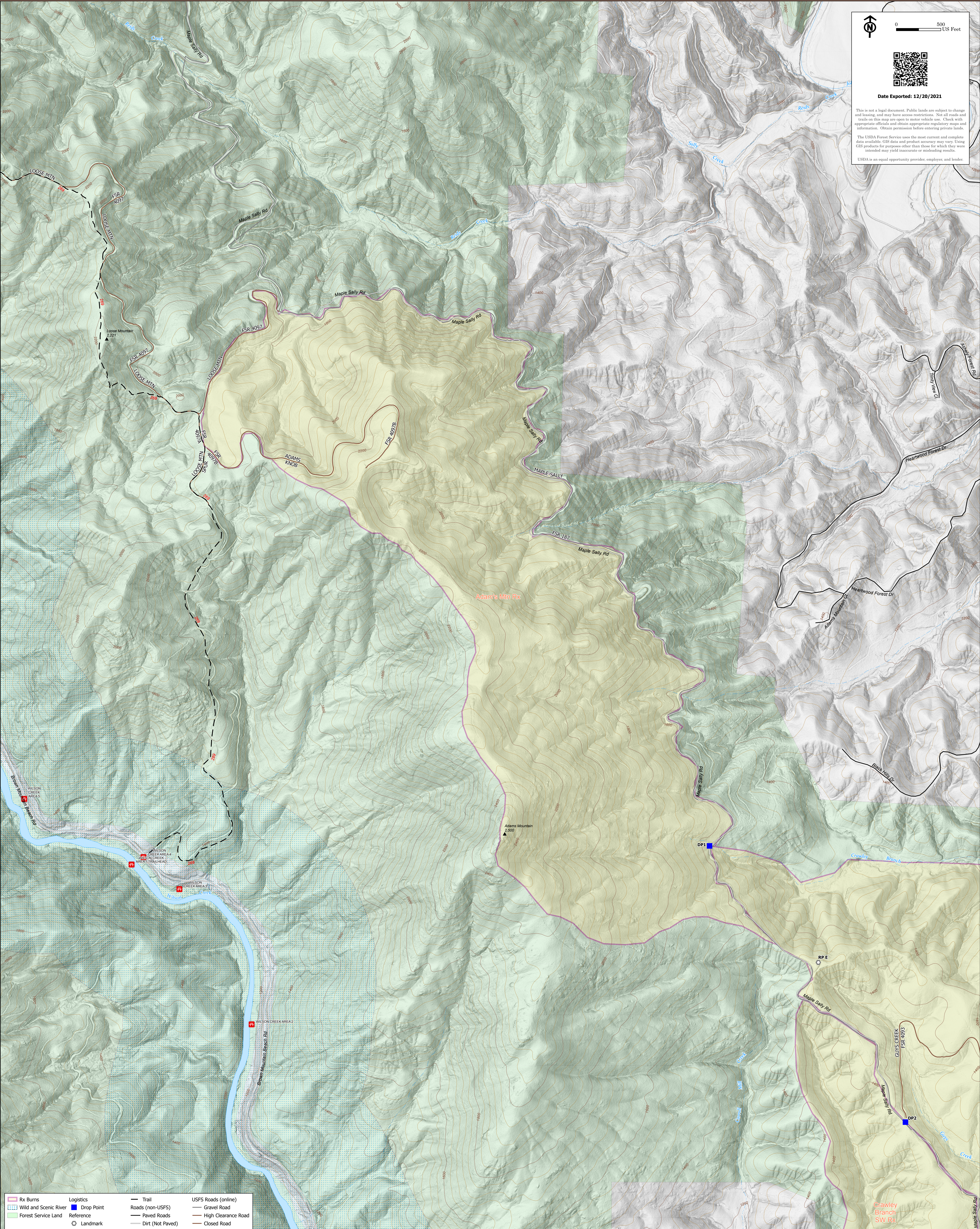


Date Exported: 12/20/2021

This is not a legal document. Public lands are subject to change and leasing, and may have access restrictions. Not all roads and trails on this map are open to motor vehicle use. Check with appropriate officials and obtain appropriate regulatory maps and information. Obtain permission before entering private lands.

The USDA Forest Service uses the most current and complete data available. GIS data and product accuracy may vary. Using GIS products for purposes other than those for which they were intended may yield inaccurate or misleading results.

USDA is an equal opportunity provider, employer, and lender.



Rx Burns	Logistics Drop Point	Trail	USFS Roads (online)
Wild and Scenic River	Reference	Roads (non-USFS)	Gravel Road
Forest Service Land	Landmark	Paved Roads	High Clearance Road
		Dirt (Not Paved)	Closed Road

Grawley Branch SW Rx