



0 220  
Feet

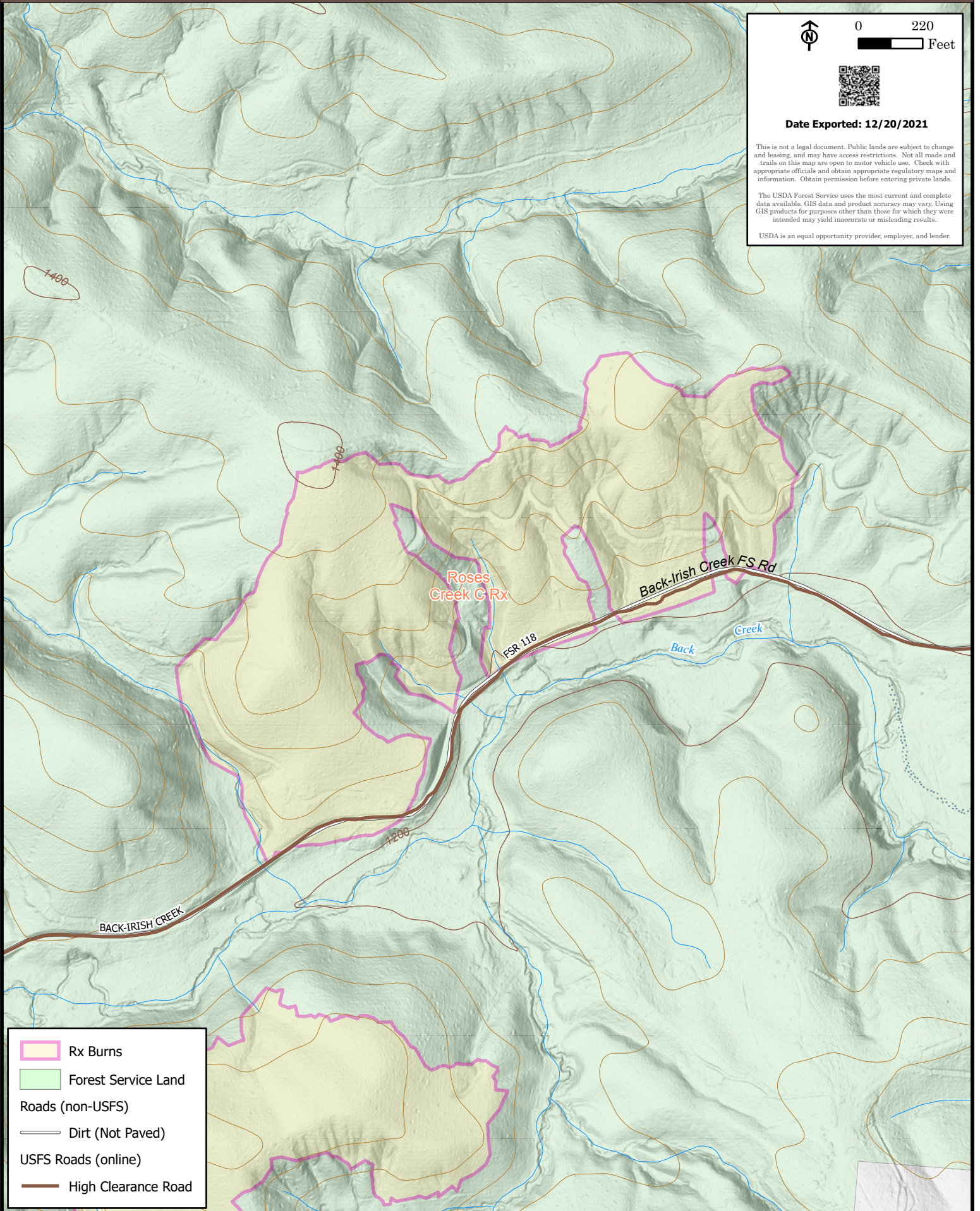


Date Exported: 12/20/2021

This is not a legal document. Public lands are subject to change and leasing, and may have access restrictions. Not all roads and trails on this map are open to motor vehicle use. Check with appropriate officials and obtain appropriate regulatory maps and information. Obtain permission before entering private lands.

The USDA Forest Service uses the most current and complete data available. GIS data and product accuracy may vary. Using GIS products for purposes other than those for which they were intended may yield inaccurate or misleading results.

USDA is an equal opportunity provider, employer, and lender.



|  |                     |
|--|---------------------|
|  | Rx Burns            |
|  | Forest Service Land |
|  | Roads (non-USFS)    |
|  | Dirt (Not Paved)    |
|  | USFS Roads (online) |
|  | High Clearance Road |