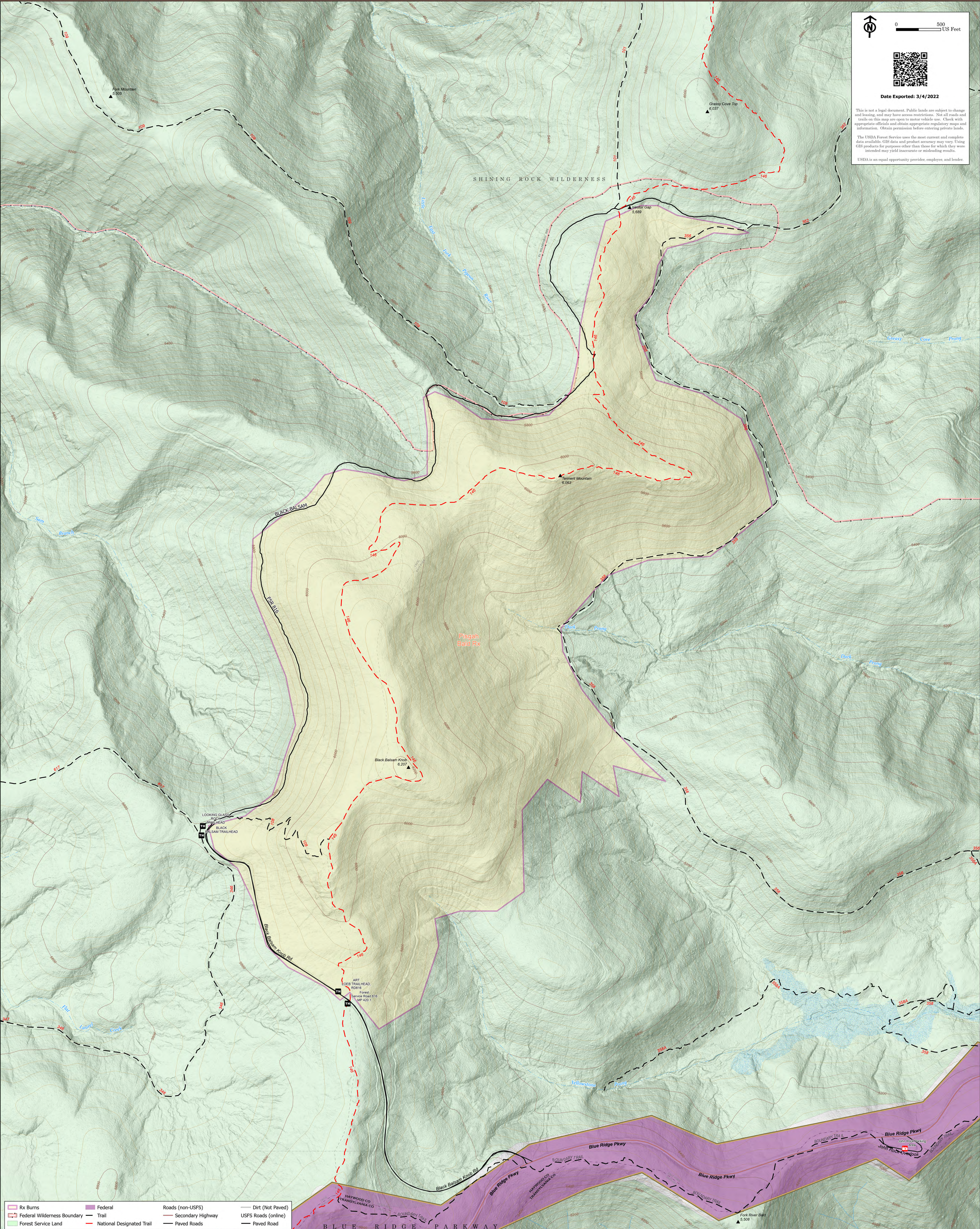


North arrow and scale bar (0 to 500 US Feet).  
 QR code.  
 Date Exported: 3/4/2022  
 This is not a legal document. Public lands are subject to change and leasing, and may have access restrictions. Not all roads and trails on this map are open to motor vehicle use. Check with appropriate officials and obtain appropriate regulatory maps and information. Obtain permission before entering private lands.  
 The USDA Forest Service uses the most current and complete data available. GIS data and product accuracy may vary. Using GIS products for purposes other than those for which they were intended may yield inaccurate or misleading results.  
 USDA is an equal opportunity provider, employer, and lender.



Rx Burns	Federal	Roads (non-USFS)	Dirt (Not Paved)
Federal Wilderness Boundary	Trail	Secondary Highway	USFS Roads (online)
Forest Service Land	National Designated Trail	Paved Roads	Paved Road