

Hilltop Mountain

Incident Action Plan

Tuesday, September 26

Day Shift 0700 - 1900



NCDA&CS

Fire #: NC-NCS-239003

Beacon # Training G106



INCIDENT OBJECTIVES (ICS 202)

INCIDENT OBJECTIVES	1. Incident Name Hilltop Mountain Fire	2. Date Prepared 9/25/2023	3. Time Prepared 1830
4. Operational Period (DATE/TIME) September 26, 2023 0700 to 1900			
5. General Control Objectives For The Incident (Include Alternatives):			
<u>Management Objectives</u>			
<ol style="list-style-type: none"> 1. Provide for the safety of firefighters and the general public by assessing hazards and utilizing safety measures to mitigate risks. 2. Maintain effective cost management based on incident needs and ensure all documentation is complete. 3. Ensure information releases and communication of fire status is provided with adjoining agencies, cooperators, and the public. 4. Take advantage of training opportunities while following chain of command and NWCG standards. 5. Provide initial attack assistance in McDowell County. 			
<u>Control Objectives</u>			
<ol style="list-style-type: none"> 1. Keep fire South of Lookout Ridge, West of Friday Ridge, North of Indian Grave Gap, and East of Huntsville Branch. 			
6. Weather Forecast For Period			
See Attached Weather Forecast.			
7. General Safety Message			
See Attached Safety Message.			
8. ATTACHEMENTS (X IF ATTACHED)			
Organizational List – ICS 203 Safety Message Fire Weather Forecast Div. Assignment Lists - ICS 204 Communications Plan - ICS 205		Medical 8 Line - ICS 206 Incident within an Incident Info Finance & Logistics Message PIO Message Incident Map Unit Log - ICS 214	
9. Prepared By (Resource Unit Leader Trainee)		10. Approved By (Incident Commander)	

ORGANIZATION ASSIGNMENT LIST (ICS 203)

1. Incident Name: Hill Top Mountain Fire		2. Operational Period:		Date From: 9/26/2023	Date To: 9/26/2023
				Time From: 0700	Time To: 1900
3. Command and General Staff:			7. Operations Section:		
Incident Commander	Trent Duncan	Field Ops	Benji Reece		
Deputy Incident Commander		Planning Ops			
Safety Officer	Thomas Crate	a. Branch I			
Liaison Officer		Branch Director			
Public Information Officer	Ruthie Edwards / Bo Dossett	Division/Group	Alpha	Rick Gore	
		Division/Group	Bravo	Ethan Matherly	
		Division/Group	Charlie	Danny Brasington	
4a. Agency Administrators:			Division/Group		
NC Forest Service	Greg Smith / Mike Cheek	Division/Group			
		Division/Group			
			b. Branch II		
4b. Agency Representatives:			Branch Director		
NC State Parks	Matt Haynes	Division/Group			
		Division/Group			
		Division/Group			
		Division/Group			
		Division/Group			
5. Planning Section:			c.		
Chief	Wes Sketo	Branch Director			
Deputy		Division/Group			
Resources Unit	Eve Ciotti	Division/Group			
Status Check - In	Trevor Davis / Edward Terrell	Division/Group			
Situation Unit	Scott Avis / Lee Wicker	Division/Group			
GIS Specialist	Ryan Beeson / Alex Ray	d.			
		Branch Director			
Field Observer		Division/Group			
		Division/Group			
Fire Behavior		Division/Group			
IMET		Division/Group			
Demobilization Unit		e. Air Operations Branch			
Documentation Unit		Air Ops Branch Director			
		Helibase Manager			
		Air Tactical Grp Supervisor			
		Air Support Grp Supervisor			
6. Logistics Section:			8. Finance Section:		
Chief	Jason Noble	Chief	Bridgit Gallagher		
Deputy Chief		Deputy			
Supply Unit		Procurement Unit			
Ordering Manager	Joseph Shimel	Time Unit	Renee Strickland		
Receiving / Distribution					
Ground Support Unit	Jeff Lowan / Donald Murry				
Equipment Manager	Geoff Brantland / Harley Andrews				
	Justin Howell				
Facilities Unit	Michael Greene	PTRC	Susan Duncan		
Food Unit		EQTR	Sharie Ashley		
Medical Unit		Cost Unit			
Communications Unit	Robert Kassel	Computer Spec			
COMT	Mark Bradshaw / Bruce Scott	ITSS			
RADO		BUYL			
Security Manager		BUYM			
9. Prepared by: Name:		Position/Title:		Signature:	
ICS 203		Date Prepared:		Time Prepared:	

HEALTH AND SAFETY MESSAGE

INCIDENT: Hilltop Mountain Fire

DATE: 9/26/23 **OPERATIONAL PERIOD:** 0700-1900

Major Hazards and Risks:

- **Driving & Traffic:** While operating vehicles on the incident you will encounter many driving hazards. Practice defensive driving techniques. Observe posted speed limits along your route. Allow at least a 3-second following distance behind other vehicles. Watch for increased beach traffic as you travel back home. Clean your windows so you can see the world around you clearly.
- **Heavy Equipment:** Utilize 3-points of contact when getting on/off equipment. Plan and discuss travel routes prior to departing. Load equipment on level ground to prevent sliding off of the trailer. Bystanders need to be in front of hauling units as equipment is loaded.
- **STEPS TO AVOID COMPLACENCY:** Start everyday from scratch and focus on the process instead of the outcome. Keep your head in the game and continue to learn and adapt.

Conduct Tailgate Safety Briefings / Use Briefing Checklist Inside Back Cover of I.R.P.G.

Avoiding Snakebites. Some bites, such as those inflicted when snakes are accidentally stepped on or encountered in the wild, are nearly impossible to prevent. But experts say a few precautions can lower the risk of being bitten:

- Leave snakes alone. Many people are bitten because they try to kill a snake or get a closer look at it.
- If you can see it or hear it, leave it alone!
- Keep hands and feet out of areas you can't see. Don't pick up logs or sticks unless you are out of a snake's striking distance. (A snake can strike half its length.)

Keep alert around pump operations because snakes are frequently attracted to the vibrations of the running motors.

SLIPS, TRIPS & FALLS

- Continually re-evaluate your work area and communicate hazards to others working with you regardless of incident affiliation.
- Maintain 3 points of contact when climbing on to and off of equipment.
- Ensure applicable PPE and footwear are worn



FNUS72 KGSP 281451
NCSGSP

Spot Forecast for Hilltop Mountain...NCFS
National Weather Service Greenville Spartanburg SC
1032 AM EDT Tue September 26th

Forecast is based on forecast start time of 1200 EDT on September 26.
If conditions become unrepresentative, or if you have questions
or concerns about this forecast, contact the National Weather
Service in GSP at (864)223-2328.

.DISCUSSION...

Minimum relative humidities will bottom out around 21 percent this
afternoon behind a dry cold front. Winds will be 15 to 20 mph out
of the south southwest today, gusting to as high as 25 mph, with
clear skies. Fire weather statement may be needed for Wednesday.

.REST OF TODAY...

Sky/weather.....Clear.
Max temperature.....Around 83.
Min humidity.....21 percent.
Wind (20 ft).....Southwest winds 15 to 20 mph.
Mixing height.....Max 5200 ft agl.
Transport winds.....Southwest 5 to 10 mph increasing to 12 to 20 mph
late in the afternoon.
Vent Rate.....Max 104,000 mph-ft.
LVORI.....Max 2.
ADI.....Max 35.
Stability class.....5.
Haines index.....5 or moderate for large plume dominated
fire growth.

TIME (EDT)	12P	1PM	2PM	3PM	4PM	5PM
Sky (%).....	5	5	5	10	15	10
Weather cov.....						
Weather type.....						
Tstm cov.....						
Temp.....	70	81	82	82	81	81
RH.....	40	36	31	25	22	21
20 FT wind dir.....	S	S	S	SW	SW	SW
20 FT wind spd.....	5	6	10	14	15	14
20 FT wind gust....	0	8	10	18	18	20
Transp wind dir....	S	S	SW	SW	SW	SW
Transp wind spd....	13	9	6	5	3	7
Haines index.....	4	4	4	4	3	3

.TONIGHT...

Sky/weather.....Partly Cloudy.
Min temperature.....Around 64.
Max humidity.....50 percent.
Wind (20 ft).....Southwest winds 5 to 12 mph early in the evening
becoming light.
Mixing height.....Min 300 ft agl.

Transport winds.....South 3 to 12 mph.
Haines index.....3 or very low potential for large plume
dominated fire growth.

TIME (EDT)	6PM	7PM	8PM	9PM	10P	11P	MID	1AM	2AM	3AM	4AM	5AM
Sky (%).....	10	12	12	12	11	10	12	12	10	8	6	5
Weather cov.....												
Weather type.....												
Temp.....	80	79	76	73	70	69	68	68	67	66	66	65
RH.....	24	28	34	38	42	44	45	46	48	49	50	50
20 FT wind dir.....	SW	SW	S	S	SW	SW	S	SW	SW	SW	SW	SW
20 FT wind spd.....	14	12	10	9	8	8	7	7	6	6	5	5
20 FT wind gust....	20	15	12	10		10						
Transp wind dir....	SW	S	SW	SW	SW	SW	SW	SW	SW	SW	SW	SW
Transp wind spd....	10	12	12	8	8	3	3	3	3	3	3	3
Haines index.....	3	3	3	3	3	3	3	3	3	3	3	3

.WEDNESDAY...

Sky/weather.....Partly cloudy.
Max temperature.....Around 78.
Min humidity.....28 percent.
Wind (20 ft).....South winds becoming west around 8 mph late in
the morning, then becoming northwest 15G33 early in the
afternoon.
Mixing height.....Max 3900 ft agl.
Transport winds.....Northwest 8 to 12 mph.
Haines index.....3 or very low potential for large plume
dominated fire growth.

TIME (EDT)	6 AM	8 AM	10 AM	NOON	2 PM	4 PM
Sky (%).....	10	19	15	25	23	19
Weather cov.....						
Weather type.....	NONE....					
Temp.....	66	72	73	74	75	78
RH.....	49	39	35	32	29	28
20 ft wind.....	S6	W 8	W 12	NW 13	NW 15	NW15
20 ft wind gust....		10	16	25	28	33
Transport wind.....	S8	S9	W12	NW 17	NW25	NW28
Haines index.....	3	3	3	3	3	3

\$\$

Forecaster... Dr. Rainy W. Eather
Requested by...Chris Sharpton
Type of request...WILDFIRE
.TAG 2213938.15/GSP
.DELDT 09/26/23
.EMAIL chris.sharpton@ncagr.gov

MEDICAL PLAN (ICS 206 WF)

Controlled Unclassified Information//Basic

7. Name & Location	Remote Camp Location(s)		
N/A	Point of Contact:		
	EMS Responders & Capability:		
	Equipment Available on Scene:		
	Medical Emergency Channel:		
	ETA for Ambulance to Scene:		
	Air:		
	Ground:		
	Approved Helispot:		
	Lat:		
	Long:		
N/A	Point of Contact:		
	EMS Responders & Capability:		
	Equipment Available on Scene:		
	Medical Emergency Channel:		
	ETA for Ambulance to Scene:		
	Air:		
	Ground:		
	Approved Helispot:		
	Lat:		
	Long:		
8. Prepared By (Medical Unit Leader)	9. Date/Time	10. Reviewed By (Safety Officer)	11. Date/Time
Click or tap here to enter text.	Click or tap here to enter text.		

INCIDENT RADIO COMMUNICATIONS PLAN 1-205				1. INCIDENT NAME		2. DATE/TIME PREPARED			3. OPERATIONAL PERIOD DATE/TIME		
				HILLTOP MTN FIRE		09/25/23 1545 PM			09/26/23 0700-1900		
4. BASIC RADIO CHANNEL UTILIZATION											
Ch#	Function	Channel Name	Assignment	RX Freq	NIW	RX Tone/NAC	TX Freq	NIW	TX Tone/NAC	Digital (D) Mixed (M) Mode Analog (A)	Remarks
	TACTICAL	NCFS INC 1	DIV A	151.4000	N	136.5	151.4000	N	136.5	A	
2	TACTICAL	NCFS INC 2	DIVB	151.4600	N	136.5	151.4600	N	136.5	A	
3	TACTICAL	NCFS INC 4	DIV C	151.2650	N	136.5	151.2650	N	136.5	A	
4	TBD	NCFS INC 5	TBD	151.2800	N	136.5	151.2800	N	136.5	A	
5	TBD	NCFS INC 6	TBD	151.1600	N	136.5	151.1600	N	136.5	A	
6	TACTICAL	NCFS INC 8	AIR OPS	171.5750	N	131.8	171.5750	N	131.8	A	ENSURE PILOT IS AWARE OF THIS PRIOR TO TAKING OFF
7	COMMAND	NC VIPER EVENT HOTEL 3	COMMAND								NC VIPER HOTEL 3 TALK GROUP
8	LOGISTICS	NC VIPER EVENT HOTEL 4	LOGISTICS								NC VIPER HOTEL 4 TALK GROUP
9	TRAVEL	NCFS CALL	TRAVEL	172.2750	N	131.8	172.2750	N	131.8	A	
10											
11											
12											
13											
14											
15											
16	AIRGUARD	NC INC 15	EMERGENCY AIRCRAFT	168.6250	N		168.6250	N	110.9	A	ONLY TO AIRCRAFT IN AN EXTREME EMERGENCY
5. Special Instructions:											
6. 1-205 Prepared By: Communications Unit Leader				Name: ROBERT KASSEL COML (t)				Signature: ROBERT J KASSEL			

FINANCE

- Legibly complete your CTRs and Equipment Shift Tickets using the examples.
- Make sure you use your legal name (not a nickname) on ALL documentation.
- Only one day per CTR/Equipment Shift Ticket
- Include dollar amount of any fuel purchased on incident in *Box 14 Remarks* on the shift ticket.
- Send all tickets to your Incident Supervisor for approval and signature.
- Please show travel time on your documents and include *TRAVEL* in remarks.

LOGISTICS

- Vehicle Inspections are being done by Ground Support @ River Lodge. All vehicles to be inspected.
- Heavy Equipment Inspections are being done by Ground Support @ NCFS McDowell County Office.
- Breakfast 0730 to 0830 @ MTF
- Dinner 1800 to 1900 @ MTF
- Collect Sack Lunches from Cafeteria after Breakfast.

Hilltop Mountain Fire Public Information Guide

Contacts for Public Information on this Incident:

Ruthie Edwards (NCFS D9) – 828-399-0373 ruthie.edwards@ncagr.gov

Bo Dossett (NCFS Madison) – 828-782-1045 burgin.dossett@ncagr.gov

Matt Haynes (NC State Parks Bobs Creek Natural Area) – 828-785-8468
matt.haynes@ncparks.gov

Michele Walker (NC Department of Natural and Cultural Resources) –
michele.walker@ncdcr.gov

Talking Points

- NC State Parks, NC Forest Service, McDowell County Emergency Management, and local VFD resources are working together to contain the Hilltop Mountain Fire.
- Resources are building containment around the main head of the fire in an effort to keep the fire away from homes and private land.
- Encourage the public to take precautions with fire at home for as long as dry conditions continue.
- Fire is a natural part of this ecosystem and the natural area will recover with time. Many of the plant and animal species here are adapted to live with wildfire.
- The cause of the fire is still under investigation and is being investigated by NCFS Law Enforcement.

If you do not feel comfortable answering a question please encourage members of the public to reach out to the PIOs assigned to the fire, or feel free to give them our contact information.

Please send fireline pictures, videos, and additional information to
burgin.dossett@ncagr.gov

Incident Within Incident Response Plan

Communications will activate the IEP when the initial radio notification occurs. Notification should include Color/Severity, Chief Complaint/Mechanism of Injury, and Geographic Location, if possible, as well as the Date and Time of the notification. IMT members will be asked to respond (or not) based on the severity. During Night Shift, Communications will notify the Section Rep(s) directly.

Severity	Day Shift Response	Night Shift Response
GREEN Routine	SOF (and/or MEDL if assigned) will report to Communications or IWI meeting area. The patient will be treated appropriately, and relevant notifications will be made.	Communications contacts the SOF (and/or MEDL if assigned), who makes an assessment. The patient will be treated appropriately, and relevant notifications will be made.
YELLOW Priority	SOF (and MEDL if assigned) PSC, LSC, OSC, FSC, PIO, IC/DIC (AOBD, COMP if assigned) will proceed to the designated IWI meeting area.	Communications contacts the SOF (and MEDL if assigned). Appropriate C&G members to be notified.
RED Urgent	SOF (and MEDL if assigned) PSC, LSC, OSC, FSC, PIO, IC/DIC (AOBD, COMP if assigned) will proceed to the designated IWI meeting area.	Communications contacts the SOF (and MEDL if assigned). Appropriate C&G members to be notified.
Unknown Severity	In the absence of a declared severity we will respond to the incident as a RED response.	
PURPLE Other, potential Critical, Incidents	IC, LSC, PSC and SOF will proceed to Communication. Appropriate C&G members to be notified.	
NOTE: PURPLE examples include, but are not limited to: unaccounted-for incident resources, threats to employees, accidents involving the public that incident personnel respond to- not initially requiring the use of ICS 206, but requiring IMT response.		

Incident Emergency Plan Definitions

Severity	Definitions
Routine	<p><u>Non-Emergency Incident</u>– Patient has minor injury or illness.</p> <p>Non-Emergency transportation is through Ground Support, FEMT or assigned Supervisor. Communications <u>does not</u> restrict radio traffic. Coordination of patient status and transportation information (MIR) and assessment is communicated through Communications.</p> <p>Per Medical Incident Report or IRPG these patients are GREEN Priority 3</p>
Priority	<p>Medical Emergency – Patient has serious injury or illness. Evacuation may be delayed if necessary if other IWLs takes priority. Communication <u>does</u> require a clear channel. Coordination of the patient information and assessment is through Communications.</p> <p>Per Medical Incident Report patient is YELLOW Priority 2</p>
Urgent	<p>Medical Emergency – Patient has life threatening injury or illness. Evacuation need is immediate. Communication <u>does</u> require a clear channel. Coordination of the patient information and assessment is through Communications. Per Medical Incident Report patient is RED Priority 1</p>
Unknown Emergency	<p>In the absence of a declared severity we will respond to the incident as a RED response.</p>
Other Potential Emergency	<p>Examples include, but are not limited to: unaccounted-for incident resources, threats to employees, accidents involving the public that incident personnel respond to- not initially requiring the use of ICS 206, but requiring IMT response.</p>
<ul style="list-style-type: none"> <input type="checkbox"/> All departure and arrival times and other pertinent information recorded in Communications Log <input type="checkbox"/> When the emergency is over, clear all emergency radio traffic for normal use <input type="checkbox"/> Notification to Compensation/Claims has been made <p><u>Injured or deceased individual(s)</u></p> <ul style="list-style-type: none"> <input type="checkbox"/> Names shall not be used over the radio <input type="checkbox"/> Deceased individuals and their equipment are not to be moved, except to accomplish rescue work or to protect the health and safety of others. If there is potential for a serious accident investigation, consider leaving the site as undisturbed as possible. <p><u>Clear Text</u> - Utilization of clear text should be a priority on all incidents so that common terminology is expressed and understood. If an emergency needs to be declared and radio traffic silenced, all personnel shall follow “Emergency Traffic” guidelines to clear radio traffic.</p> <p><i>Operations Section Chief, Division Supervisors or Communication Units shall acknowledge the severity of the emergency. Clear text shall be used to identify the situation of the emergency: “MEDICAL EMERGENCY”, “FIREFIGHTER TRAPPED”, “FIREFIGHTER BURNED”, “FIREFIGHTER MISSING”, to notify all on-scene personnel. Also, the “Location” needs to be communicated and could be as simple as “Division Alpha Firing Group.”</i></p> <p><i>The acronym “May-Day” is used by some fire agencies as a distress signal (hailing call) indicating a firefighter is in trouble or signify emergencies to aircraft.</i></p>	

MEDICAL PLAN (ICS 206 WF)

Controlled Unclassified Information//Basic

Medical Incident Report

FOR A NON-EMERGENCY INCIDENT, WORK THROUGH CHAIN OF COMMAND TO REPORT AND TRANSPORT INJURED PERSONNEL AS NECESSARY.

FOR A MEDICAL EMERGENCY: IDENTIFY ON SCENE INCIDENT COMMANDER BY NAME AND POSITION AND ANNOUNCE "MEDICAL EMERGENCY" TO INITIATE RESPONSE FROM IMT COMMUNICATIONS/DISPATCH.

Use the following items to communicate situation to communications/dispatch.

1. CONTACT COMMUNICATIONS / DISPATCH (Verify correct frequency prior to starting report)

Ex: "Communications, Div. Alpha. Stand-by for Emergency Traffic."

2. INCIDENT STATUS: Provide incident summary (including number of patients) and command structure.

Ex: "Communications, I have a Red priority patient, unconscious, struck by a falling tree. Requesting air ambulance to Forest Road 1 at (Lat./Long.) This will be the Trout Meadow Medical, IC is TFLD Jones. EMT Smith is providing medical care."

Severity of Emergency / Transport Priority	<input type="checkbox"/> RED / PRIORITY 1 Life or limb threatening injury or illness. Evacuation need is IMMEDIATE <i>Ex: Unconscious, difficulty breathing, bleeding severely, 2° – 3° burns more than 4 palm sizes, heat stroke, disoriented.</i> <input type="checkbox"/> YELLOW / PRIORITY 2 Serious Injury or illness. Evacuation may be DELAYED if necessary. <i>Ex: Significant trauma, unable to walk, 2° – 3° burns not more than 1-3 palm sizes.</i> <input type="checkbox"/> GREEN / PRIORITY 3 Minor Injury or illness. Non-Emergency transport <i>Ex: Sprains, strains, minor heat-related illness.</i>	
Nature of Injury or Illness & Mechanism of Injury		<i>Brief Summary of Injury or Illness (Ex: Unconscious, Struck by Falling Tree)</i>
Transport Request		<i>Air Ambulance / Short Haul/Hoist Ground Ambulance / Other</i>
Patient Location		<i>Descriptive Location & Lat. / Long. (WGS84)</i>
Incident Name		<i>Geographic Name + "Medical" (Ex: Trout Meadow Medical)</i>
On-Scene Incident Commander		<i>Name of on-scene IC of Incident within an Incident (Ex: TFLD Jones)</i>
Patient Care		<i>Name of Care Provider (Ex: EMT Smith)</i>

3. INITIAL PATIENT ASSESSMENT: Complete this section for each patient as applicable (start with the most severe patient)

Patient Assessment: See IRPG PAGE 106

Treatment:

4. TRANSPORT PLAN:

Evacuation Location (if different): (Descriptive Location (drop point, intersection, etc.) or Lat. / Long.) Patient's ETA to Evacuation Location:

Helispot / Extraction Site Size and Hazards: Hwy 194/211, locate powerlines and make aware. No personnel inside the LZ. Crossnore Fire should be activated to assist with fire control at the LZ site.

5. ADDITIONAL RESOURCES / EQUIPMENT NEEDS:

Example: Paramedic/EMT, Crews, Immobilization Devices, AED, Oxygen, Trauma Bag, IV/Fluid(s), Splints, Rope rescue, Wheeled litter, HAZMAT, Extrication

6. COMMUNICATIONS: Identify State Air/Ground EMS Frequencies and Hospital Contacts as applicable

Function	Channel Name/Number	Receive (RX)	Tone/NAC *	Transmit (TX)	Tone/NAC *
COMMAND	Event Channel VIPER Hotel 3	Click or tap here to enter text.	Click or tap here to enter text.	Click or tap here to enter text.	Click or tap here to enter text.
AIR-TO-GRND	INC8	171.575	131.8	171.575	131.8
TACTICAL	Event Channel VIPER Hotel 3	Click or tap here to enter text.	Click or tap here to enter text.	Click or tap here to enter text.	Click or tap here to enter text.

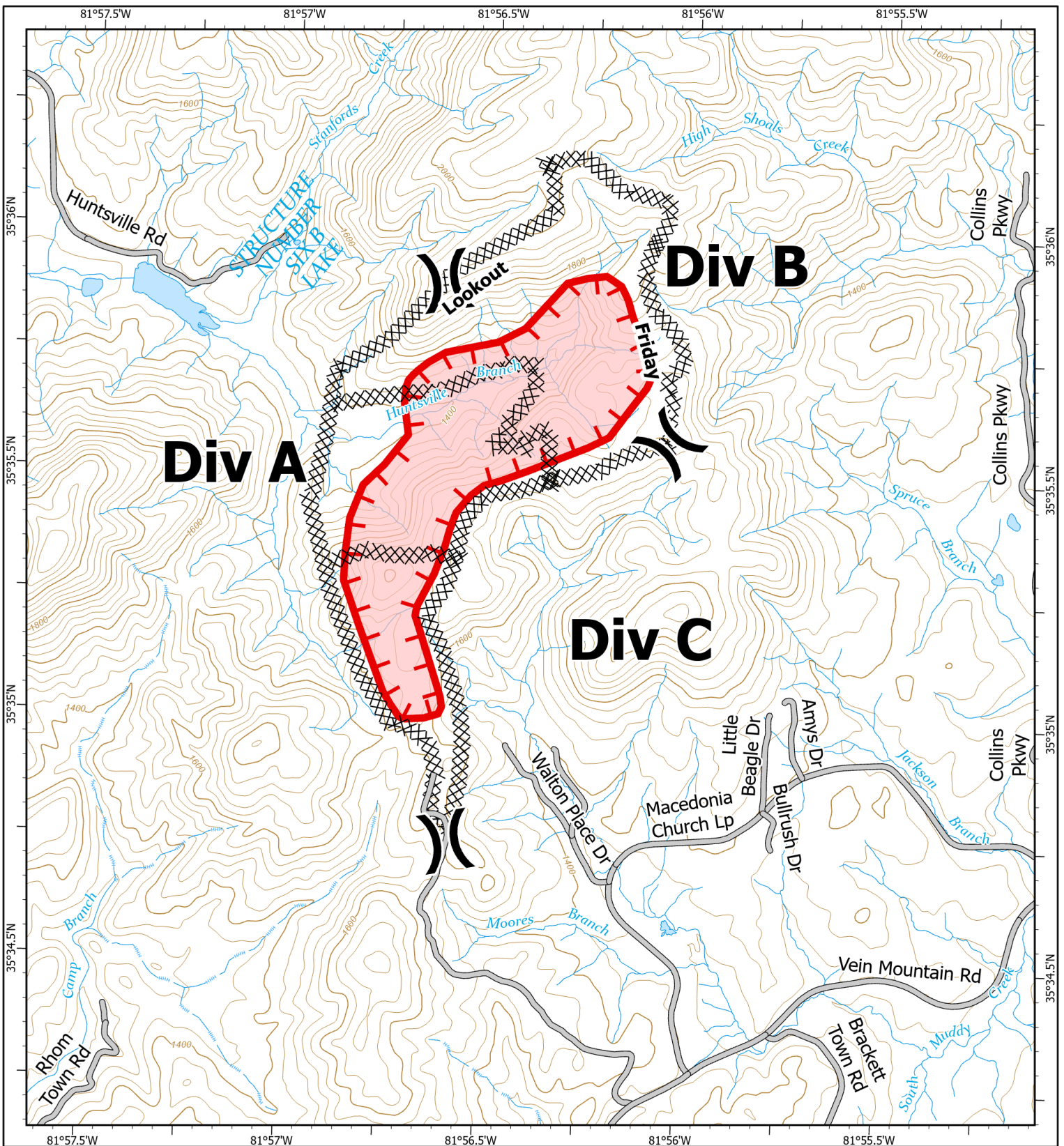
7. CONTINGENCY: Considerations: If primary options fail, what actions can be implemented in conjunction with primary evacuation method? Be thinking ahead. Use of UTV, Improvised stabilization and patient litter for extrication. If remote, Avery County EM will activate NCHART extrication resource

8. ADDITIONAL INFORMATION: Updates/Changes, etc.

REMEMBER: Confirm ETA's of resources ordered. Act according to your level of training. Be Alert. Keep Calm. Think Clearly. Act Decisively.

FOR LIFE THREATING MEDICAL EMERGENCIES: Specific to the S-211 Pump School Field Scenerio

1. Call 911 and follow 8-line form.
2. Group Supervisor at the scene, announce over command channel D1 T1 "All units hold radio traffic for medical emergency"
3. Group Supervisor at the scene, advise the MEDL, SOFR, & OPSC to activate medical response activity.
4. Provide first aid to the patient, EMT's to respond to the incident scene to assist in care.
5. OPSC will aid incoming medical resources to arrive at the scene as quickly as possible, and if needed, direct the construction of a helicopter landing zone.
6. Group Supervisor will record all incident information on a Unit Log ICS-214 and submit to the MEDL or Documentation unit by the end of the operational period.



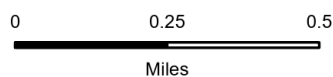
2023 Hilltop Mountain IAP Map

Hilltop Mountain

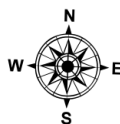
NC-NCS-239003

9/26/2023 IAP Map

187 acres at 9/24/2023 2100 hrs



1:20,000 | Alex Ray | 9/25/2023 2028
Acres from IR and GPS
NAD 1983 2011 Datum, Lat.Long Grid



- | | | | |
|----|-------------------------------|--|---------------------------|
|)(| Division Break | | Lake / Pond |
| ⊗ | Completed Dozer Line | | Stream/River |
| | Access or Improved Road | | Stream/River Intermittent |
| | Uncontained | | Normal Index |
| | Wildfire Daily Fire Perimeter | | Normal Intermediate |