

**WEATHERFORD  
INITIAL ATTACK  
COUNTIES**

**NORTHWEST  
OKLAHOMA  
COMPLEX**

OK-OKS-0000529

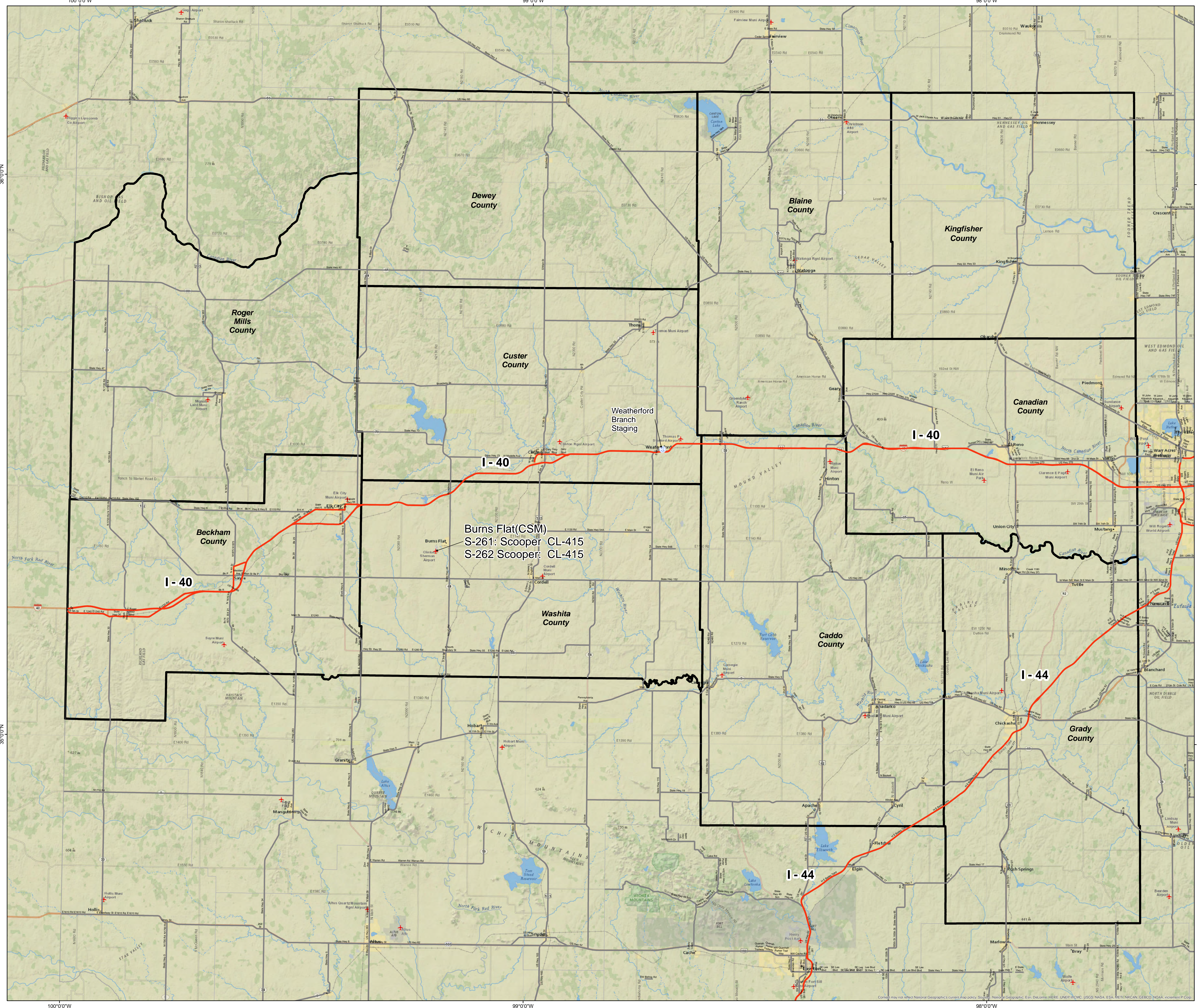
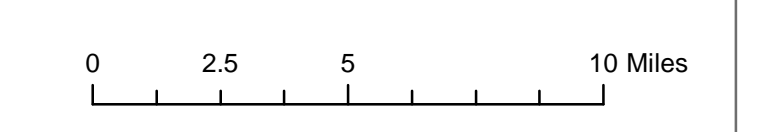
MARCH 17, 2017

TOM BARNES  
1100 HOURS  
MARCH 17, 2017

- Weatherford Branch Staging
- Interstate Highways
- Major Roads
- IA Counties



Coordinate System: State Plane OK North FIPS 3501  
Datum: NAD 1983 (2011)  
Units: Foot (US)



Burns Flat(CSM)  
S-261: Scooper CL-415  
S-262 Scooper: CL-415

Weatherford Branch Staging

36°0'0"N

35°0'0"N

36°0'0"N

99°0'0"W

99°0'0"W

98°0'0"W

98°0'0"W

36°0'0"N

35°0'0"N

36°0'0"N