

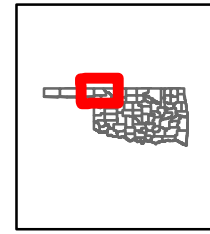
VICINITY MAP
SELMAN FIRE
NORTHWEST OKLAHOMA COMPLEX

283 Fire
69,396 Acres

MARCH 20, 2017

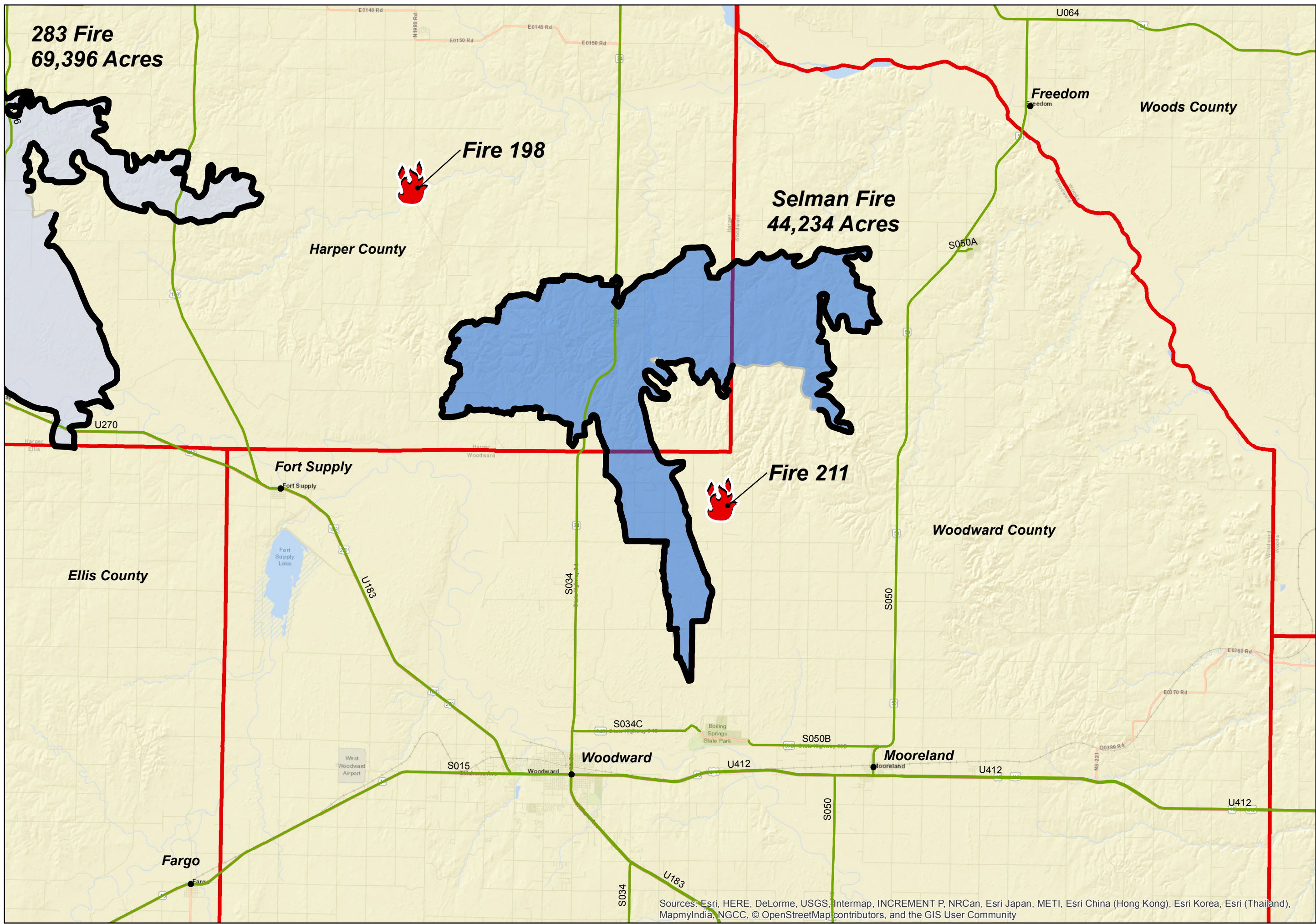
TOM BARNES
 1900 HOURS
 MARCH 19, 2017

-  Fire Location
-  Towns
-  Roads
-  Completed Line
-  283 Fire
-  Selman Fire
-  County Boundary



Coordinate System: State Plane, OK North FIPS 3501
 Datum: NAD 1983 (2011)
 Units: Feet (US)

0 1.5 3 mi.



Sources: Esri, HERE, DeLorme, USGS, Intermap, INCREMENT P, NRCan, Esri Japan, METI, Esri China (Hong Kong), Esri Korea, Esri (Thailand), MapmyIndia, NGCC, © OpenStreetMap contributors, and the GIS User Community