

Incident Action Plan

Unified Command



Day Operational Period

Monday

4/16/18

0800-2000

34 Complex

OK-OKS-180037

PNLN1P (1502)

INCIDENT OBJECTIVES	1. Incident Name 34 Complex	2. Date Prepared 4/15/18	3. Time Prepared 1700
4. Operational Period 4/16/18 0800 - 2000			
5. General Control Objectives For The Incident <u>Objectives for the Incident:</u> <ul style="list-style-type: none"> • Ensure protection of human life as a top priority through the use of sound risk management decisions in all actions. • Provide for protection of private property, infrastructure, State, County and Municipal facilities by using sound suppression tactics on all intial and extended attack fires. • Provide training opportunities to Oklahoma Forestry Services personnel to strengthen organizational capabilites and complete training assignments. • Ensure sensitivity to the impacts of suppression activites to private property by maintaining contact with appropriate agencies, elected officials, business leaders and members of the public. 			
<u>Control Objectives:</u> <ul style="list-style-type: none"> • Utilize full suppression tactics to keep 34 Complex fire contained within the current footprint by utilizing a combination of ground and aerial resources. • Utilize strategic firing operations to prevent escape or stop forward spread of fire if appropriate and directed to do so by the Operations Section Chief. • Respond to new fires at the request of Oklahoma Forestry Services to support and suppress any new emerging incidents under a Unified Command Structure. 			
6. Weather forecast for Period Expect conditions to begin to dry again with southerly winds setting up tomorrow over the incident area as the next cold front out west develops. Winds will gust out of the south to near 30 mph at times in the afternoon with RH values plummeting into the upper teens. As the front approaches winds are expected to increase out of the southwest for Tuesday before switching to the west by the afternoon.			
7. General Safety Message Look up, look down, look all around for hazards, recognize them and mitigate them.			
8. ATTACHMENTS (X IF ATTACHED) <input checked="" type="checkbox"/> Organization List - ICS 203 <input checked="" type="checkbox"/> Medical Plan - ICS 206 <input type="checkbox"/> _____ <input checked="" type="checkbox"/> Division Assignment Lists - ICS 204 <input type="checkbox"/> Incident Map <input type="checkbox"/> _____ <input checked="" type="checkbox"/> Communications Plan - ICS 205 <input type="checkbox"/> Traffic Plan <input type="checkbox"/> _____			
9. Prepared By (Planning Section Chief) /s/ Dave Berens		10. Approved By (Incident Commander) /s/ Debbie Beard	

ORGANIZATION ASSIGNMENT LIST			9.	Operations Section	
1. Incident Name 34 Complex			Planning Operations		Ron Bertsch, Shawn Nagle (t)
			Field Operations		Jeff Schardt, Dan Martin (t)
2. Date 04/15/18		3. Time 1700			
4. Operational Period 04/16/18 DAY (0800 – 2000)			a.		Divisions/Groups
5. Incident Commander and Staff			Division	A	Heath Thomas
Incident Commander	Steve Parrish, Debbie Beard (t)		Division	D	Greg Salansky, Jared Nobles (t)
	Todd Finley, Tom Marcom		Division	G	Matt Johnson
Deputy Incident Commander	Danny Bryant		Division	J	Tom Crews
			Group	Structure Protection	Randy Jones, Jason Klawinsky (t)
			Group	Night Shift	Dennis Gaston (t) , Mike Brod (t)
Liaison Officer	Bryan Swanson, Keith Lawrence				
Safety Officer	Buddy Kelley, Mark Sullivan, Larry Holsomback				
Information Officer	Bonnie Strawser, Donald Simon				
6. Agency Reps					
Woodward F.D. Chief		Todd Finley			
Mooreland F.D. Chief		Tom Marcom			
Fort Supply F.D. Chief		Mike Petty			
Sharon F.D. Chief		Bill Phillips			
Mutual F.D. Chief		Kevin Mitchell	b.		Air Operations Branch
Oklahoma Forestry Services		Mark Goeller	Air Operation Branch Director		Bruce Wicks
Oklahoma Emergency Management		Traci Naile	Air Support Group Supervisor		Pete Kubiak
Woodward Emergency Management		Matt Lehenbauer	Air Tactical Group Supervisor		Tony Defalco
Mooreland Emergency Management		Jay Krukenberg	Air Tactical Group Supervisor		Pete Kubler
			Helibase Manager		John Bragg
7. Planning Section					
Chief	Dave Berens				
Resources Unit	Melone Sellers, Carol O'Bryan				
Situation Unit	Bill Coates				
FBAN	Jamie Atkins		8. Logistics Section		
IMET	David Shallenberger		Chief	Susan Cornett, Cameron Crisp (t)	
Geo. Info. Spec.	Chris Evans, Joseph Harsh (t)		Deputy	Duane Cihlar	
Demob Unit	Henry Hickerson		Supply Unit	Ron Zabka, John Dunlap (t)	
Status Check-In	Angela Marcano, Jocelyn Howell (t)		Facilities Unit	Gene-Paul Matson	
Training	Diane Bolt		Ground Support	Todd Waller	
ITSS	John Edwards, Nikita Carty (t)		Ordering Manager	Nina Donley	
			Receiving & Distrib. Mgr.	Chris Combs	
10. Finance Section			Communications Unit		Terry Brinson
Chief	Wanda Kelley, Jennifer Cross (t)		Medical Unit Leader		Jeffery Cummings (t)
Time Unit	Jean Frick / Sherise Foster (t)		Security		Tom Neal
Cost Unit	Tom Steele				
Comp/Claims	Terri McDonald, Pamela Stamper (t)				
Personnel Time Recorder	Gustavo Vallejo (t)				
Prepared by (RESL) /s/ Carol O'Bryan / Melonie Sellers					



INCIDENT Weather Forecast



FORECAST NO: 01

NAME OF FIRE: 34 Complex

PREDICTION FOR: Day **SHIFT**

UNIT: Gold Team

SHIFT DATE: April 16 2018

SIGNED: David Shallenberger

TIME AND DATE

Incident Meteorologist

FORECAST ISSUED: 2000 April 15 2018

WEATHER DISCUSSION:

Expect conditions to begin to dry again with southerly winds setting up tomorrow over the incident area as the next cold front out west develops. Winds will gust out of the south to near 30 mph at times in the afternoon with RH values plummeting into the upper teens. As the front approaches winds are expected to increase out of the southwest for Tuesday before switching to the west by the afternoon.

WEATHER FORECAST MONDAY:

WEATHER: Mostly Sunny

TEMPERATURES: 74-79

HUMIDITY: 15% to 18%

20 FT WINDS: S to SSW 10 to 15 mph with gusts of 25 to 30 mph

RFTI INDEX: 4 Critical Low

OUTLOOK FOR MONDAY NIGHT:

As the front approaches winds will remain gusty into the late evening hours with south winds continuing to gust to 25 mph. RH recovery will be minimal with 60 to 65% recovery expected.

OUTLOOK FOR TUESDAY:

The mentioned cold front will push into the area by Tuesday afternoon. Winds will increase and gust out of the southwest by midday as the front approaches. RH values will fall into the 5 to 7% range with winds gusting up to 30 to 35 mph. Winds will then begin to shift to out of the west to southwest by late Tuesday afternoon. This will be a critical weather day.

EXTENDED FORECAST WEDNESDAY AND THURSDAY:

Expect the mentioned front to push through the area by Tuesday night into Wednesday morning with the winds shifting to the northwest. Expect continued dry conditions with high pressure pushing into the area for all of Wednesday and Thursday. Slightly cooler conditions expected behind the front.

FIRE BEHAVIOR FORECAST

FORECAST NUMBER: 1	TYPE OF FIRE: Wildland
FIRE NAME: 34 Complex	OPERATIONAL PERIOD: Dayshift, Monday April 16 th , 2018
DATE ISSUED: April 15 th , 2018	TIME ISSUED: 2000
UNIT: OK- Woodward County	SIGNED: <i>James Atkins</i> James Atkins, FBAN

INPUTS

WEATHER SUMMARY:

Winds will become southeast to south by this afternoon. Wind speeds will be 10-15 mph range with 25-30 mph.
Max Temp: 74-79 degrees **Min Temp:** 50-56 degrees **Min RH:** 15-18% **Max RH:** 50-60% Moderate Recovery.
Winds (20'): Southeast becoming South 10-15 mph **CWR:** 0%

OUTPUTS

FIRE BEHAVIOR**GENERAL**

Even though the winds have moderated today, the fuel conditions (herbaceous and live woody) remain critical due to the extended drought conditions. Rates of spread between 1 and 2 mph can be expected today if the fire becomes wind driven. Torching cedars, especially on ridgetops may produce ¼ mile spotting.

Fuel Model	Rate of Spread	Flame Length
GR2	90-100 ch/hr	3-7 ft
GR3	100-125 ch/hr	8-12 ft
TU3	60-80 ch/hr	10-15 ft

1 Hour FM	10 Hour FM	100 Hour FM	1000 Hour FM	Burning Index	ERC
5	7	7	6	56	106

Red Flag Threat Index for today: 1

POI: 60-70%

SPECIFIC:

34 Complex: Areas still holding any concentrated heat especially in the cedar canyons along the Little Canadian River and up towards the Cimarron River may continue to smolder. The potential still exist in these areas for active fire behavior.

Initial Attack: Expect a moderate resistance to control on any new IA fires that become wind driven with continuous downwind fuels.

AIR OPERATIONS:

With the southerly component to the winds today, smoke from the Rhea Fire in Dewey County may reduce aircraft visibility on the 34 Complex fires.

SAFETY

Risks to fireline personnel increase significantly during transfer of command periods regardless of the size or complexity of the incident. There is a high potential for incidents or injuries. Mitigate the risks by proper implementation of LCES— Lookout, Communications, Escape Routes, and Safety Zones.

Division/Group Assignment List (ICS 204 WF)

1. Incident Name:				3.			
<h1>34 Complex</h1>				Branch:		<h1>Division/Group: A</h1>	
2. Operational Period: 0700-1900							
Date/Time From: 04/16/18 0700		Date/Time To: 04/16/18 1900					
4. Operations Personnel							
AIR ATTACK SUPERVISOR		Tony Defalco Pete Kubler		FIELD OPERATIONS		Jeff Schardt Dan Martin (t)	
DIVISION/GROUP SUPERVISOR		Heath Thomas		PLANNING OPERATIONS		Ron Bertsh Shawn Nagle (t)	
5. Resources Assigned this Period							
Strike Team / Task Force / Resource Designator		LWD	Leader		Number Persons	Drop Off PT./Time	Pick Up PT./Time
ENG T3 E-15			Melissa Friess 303-956-7429		3	0800	2000
SOF2			Buddy Kelley		1	0800	2000
6. Control Operations/Work Assignments:							
Task:							
<ul style="list-style-type: none"> • Mop up and cold trail 1 chain in from perimeter of fire. 							
Purpose:							
<ul style="list-style-type: none"> • Keep fire within current perimeter 							
End State:							
<ul style="list-style-type: none"> • Fire is at least 90% contained and has not grown in size for one operational period. 							
7. Special Instructions:							
<ul style="list-style-type: none"> • Please refer to attached Communication Plan for frequency information • Practice LCES 							
8. Division/Group Communication Summary							
Function	Channel	RX Frequency N/W	RX Tone/NAC	TX Frequency N/W	TX Tone/NAC	Mode	
COMMAND	1	159.39	94.8	151.28	94.8	Analog	
TACTICAL	2	155.7525		155.7525	156.7	Analog	
AIR TO GROUND	6	154.4525		154.4525	156.7	Analog	
9. Prepared By (Resource Unit Leader)			Approved By (Planning Section Chief)			Date	Time
Carol O'Bryan / Melonie Sellers			Dave Berens			04/15/18	2000

Division/Group Assignment List (ICS 204 WF)

1. Incident Name:			3.			
<h1>34 Complex</h1>			Branch:		Division/Group: <h1>D</h1>	
2. Operational Period: 0700-1900						
Date/Time From: 04/16/18 0700		Date/Time To: 04/16/18 1900				
4. Operations Personnel						
AIR ATTACK SUPERVISOR		Tony Defalco Pete Kubler		FIELD OPERATIONS		Jeff Schardt Dan Martin (t)
DIVISION/GROUP SUPERVISOR		Greg Salansky Jared Nobles (t)		PLANNING OPERATIONS		Ron Bertsh Shawn Nagle (t)
5. Resources Assigned this Period						
Strike Team / Task Force / Resource Designator	LWD	Leader	Number Persons	Drop Off PT./Time	Pick Up PT./Time	
Marshall County Taskforce				0800	2000	
SOF2		Buddy Kelley	1	0800	2000	
6. Control Operations/Work Assignments:						
Task:						
<ul style="list-style-type: none"> • Mop up and cold trail 1 chain in from perimeter of fire. 						
Purpose:						
<ul style="list-style-type: none"> • Keep fire within current perimeter 						
End State:						
<ul style="list-style-type: none"> • Fire is at least 90% contained and has not grown in size for one operational period. 						
7. Special Instructions:						
<ul style="list-style-type: none"> • Please refer to attached Communication Plan for frequency information • Practice LCES 						
8. Division/Group Communication Summary						
Function	Channel	RX Frequency N/W	RX Tone/NAC	TX Frequency N/W	TX Tone/NAC	Mode
COMMAND	1	159.39	94.8	151.28	94.8	Analog
TACTICAL	4	158.7375		158.7375	156.7	Analog
AIR TO GROUND	6	154.4525		154.4525	156.7	Analog
9. Prepared By (Resource Unit Leader)			Approved By (Planning Section Chief)		Date	Time
Carol O'Bryan / Melonie Sellers			Dave Berens		04/15/18	2000

Division/Group Assignment List (ICS 204 WF)

1. Incident Name:			3.			
<h1>34 Complex</h1>			Branch:		Division/Group: <h1 style="font-size: 2em;">G</h1>	
2. Operational Period: 0700-1900						
Date/Time From: 04/16/18 0700		Date/Time To: 04/16/18 1900				
4. Operations Personnel						
AIR ATTACK SUPERVISOR		Tony Defalco Pete Kubler		FIELD OPERATIONS		Jeff Schardt Dan Martin (t)
DIVISION/GROUP SUPERVISOR		Matt Johnson		PLANNING OPERATIONS		Ron Bertsh Shawn Nagle (t)
5. Resources Assigned this Period						
Strike Team / Task Force / Resource Designator		LWD	Leader	Number Persons	Drop Off PT./Time	Pick Up PT./Time
Pittsburg Taskforce					0800	2000
SOF2			Mark Sullivan	1	0800	2000
6. Control Operations/Work Assignments:						
Task:						
<ul style="list-style-type: none"> • Mop up and cold trail 1 chain in from perimeter of fire. 						
Purpose:						
<ul style="list-style-type: none"> • Keep fire within current perimeter 						
End State:						
<ul style="list-style-type: none"> • Fire is at least 90% contained and has not grown in size for one operational period. 						
7. Special Instructions:						
<ul style="list-style-type: none"> • Please refer to attached Communication Plan for frequency information • Practice LCES 						
8. Division/Group Communication Summary						
Function	Channel	RX Frequency N/W	RX Tone/NAC	TX Frequency N/W	TX Tone/NAC	Mode
COMMAND	1	159.39	94.8	151.28	94.8	Analog
TACTICAL	5	159.4725		159.4725	156.7	Analog
AIR TO GROUND	6	154.4525		154.4525	156.7	Analog
9. Prepared By (Resource Unit Leader)			Approved By (Planning Section Chief)		Date	Time
Carol O'Bryan / Melonie Sellers			Dave Berens		04/15/18	2000

Division/Group Assignment List (ICS 204 WF)

1. Incident Name:			3.			
<h1>34 Complex</h1>			Branch:		Division/Group: <h1 style="text-align: center;">J</h1>	
2. Operational Period: 0700-1900						
Date/Time From: 04/16/18 0700		Date/Time To: 04/16/18 1900				
4. Operations Personnel						
AIR ATTACK SUPERVISOR		Tony Defalco Pete Kubler		FIELD OPERATIONS		
DIVISION/GROUP SUPERVISOR		Tom Crews		PLANNING OPERATIONS		
				Jeff Schardt Dan Martin (t)		
				Ron Bertsh Shawn Nagle (t)		
5. Resources Assigned this Period						
Strike Team / Task Force / Resource Designator	LWD	Leader	Number Persons	Drop Off PT./Time	Pick Up PT./Time	
TFLD		Tony Collins	1	0800	2000	
SOF2		Mark Sullivan	1	0800	2000	
6. Control Operations/Work Assignments:						
Task:						
<ul style="list-style-type: none"> Mop up and cold trail 1 chain in from perimeter of fire. 						
Purpose:						
<ul style="list-style-type: none"> Keep fire within current perimeter 						
End State:						
<ul style="list-style-type: none"> Fire is at least 90% contained and has not grown in size for one operational period. 						
7. Special Instructions:						
<ul style="list-style-type: none"> Please refer to attached Communication Plan for frequency information Practice LCES 						
8. Division/Group Communication Summary						
Function	Channel	RX Frequency N/W	RX Tone/NAC	TX Frequency N/W	TX Tone/NAC	Mode
COMMAND	1	159.39	94.8	151.28	94.8	Analog
TACTICAL	3	151.1375		151.1375	156.7	Analog
AIR TO GROUND	6	154.4525		154.4525	156.7	Analog
9. Prepared By (Resource Unit Leader)			Approved By (Planning Section Chief)		Date	Time
Carol O'Bryan / Melonie Sellers			Dave Berens		04/15/18	2000

Division/Group Assignment List (ICS 204 WF)

1. Incident Name:			3.			
34 Complex			Branch:		Division/Group: Structure Protection	
2. Operational Period: 0700-1900						
Date/Time From: 04/16/18 0700		Date/Time To: 04/16/18 1900				
4. Operations Personnel						
AIR ATTACK SUPERVISOR		Tony Delfalco Pete Kubler		FIELD OPERATIONS		
DIVISION/GROUP SUPERVISOR		Randy Jones Jason Klawinsky (t)		PLANNING OPERATIONS		
				Jeff Schardt Dan Martin (t)		
				Ron Bertsh Shawn Nagle (t)		
5. Resources Assigned this Period						
Strike Team / Task Force / Resource Designator	LWD	Leader	Number Persons	Drop Off PT./Time	Pick Up PT./Time	
SOF2		Mark Sullivan	1	0800	2000	
6. Control Operations/Work Assignments:						
Task:						
<ul style="list-style-type: none"> Assess and plan for structure protection. 						
Purpose:						
<ul style="list-style-type: none"> Identify and capture tactical measures to mitigate any threats to infrastructure. 						
End State:						
<ul style="list-style-type: none"> Contingency plan for structure protection. 						
7. Special Instructions:						
<ul style="list-style-type: none"> Please refer to attached Communication Plan for frequency information Practice LCES 						
8. Division/Group Communication Summary						
Function	Channel	RX Frequency N/W	RX Tone/NAC	TX Frequency N/W	TX Tone/NAC	Mode
COMMAND	1	159.39	94.8	151.28	94.8	Analog
TACTICAL	3	151.1375		151.1375	156.7	Analog
AIR TO GROUND	6	154.4525		154.4525	156.7	Analog
9. Prepared By (Resource Unit Leader)		Approved By (Planning Section Chief)		Date		Time
Carol O'Bryan / Melonie Sellers		Dave Berens		04/15/18		2000

Division/Group Assignment List (ICS 204 WF)

1. Incident Name:			3.			
34 Complex			Branch:		Division/Group: Night Shift	
2. Operational Period: 0700-1900						
Date/Time From: 04/16/18 1600		Date/Time To: 04/16/18 0600				
4. Operations Personnel						
AIR ATTACK SUPERVISOR		Tony Delfalco Pete Kubler		FIELD OPERATIONS		
DIVISION/GROUP SUPERVISOR		Dennis Gaston (t) Mike Brod (t)		PLANNING OPERATIONS		
				Jeff Schardt Dan Martin (t)		
				Ron Bertsh Shawn Nagle (t)		
5. Resources Assigned this Period						
Strike Team / Task Force / Resource Designator	LWD	Leader	Number Persons	Drop Off PT./Time	Pick Up PT./Time	
ENG 6 E-1						
ENG 6 E-3						
6. Control Operations/Work Assignments:						
Task:						
<ul style="list-style-type: none"> • Be available to respond to needs during nighttime operational period. 						
Purpose:						
<ul style="list-style-type: none"> • Keep fire within perimeter. 						
End State:						
<ul style="list-style-type: none"> • Fire is at least 90% contained and has not grown in size for one operational period. 						
7. Special Instructions:						
<ul style="list-style-type: none"> • Please refer to attached Communication Plan for frequency information • Practice LCES 						
8. Division/Group Communication Summary						
Function	Channel	RX Frequency N/W	RX Tone/NAC	TX Frequency N/W	TX Tone/NAC	Mode
COMMAND	1	159.39	94.8	151.28	94.8	Analog
TACTICAL	2	155.7525		155.7525	156.7	Analog
AIR TO GROUND	6	154.4525		154.4525	156.7	Analog
9. Prepared By (Resource Unit Leader)		Approved By (Planning Section Chief)		Date		Time
Carol O'Bryan / Melonie Sellers		Dave Berens		04/15/18		2000

AIR OPERATIONS SUMMARY

OPERATIONAL PERIOD DATE: 04-16-18

0800-2000

1. INCIDENT NAME: 34 Complex	2. PREPARED BY: Bruce Wicks PREPARED DATE/TIME: 04/15/18 1910	3. Sunrise: 0703 Sunset: 2012
4. REMARKS (Safety Notes, Hazards, Air Operations Special Equipment., etc.): Medivac Aircraft: TBD Do not over fly structures with external load missions. All aircraft will use strobes and running lights in smoky conditions. Hazards: Snags, non-incident aircraft, and winds. <u>Cease all operations at sunset</u>		<u>5. Squawk 1255</u>

6. PERSONNEL	Phone	7. FREQUENCIES	AM	FM	8. FIXED WING	FAA#/Base
AOBD---Bruce Wicks ASGS---Pete Kubiak	530-906-2224 404-661-4819	Air/Air Rotor Air/Air Fixed Wing	118.9250 119.9500		Air Attack	AC 690 N648CE - AVK
ATGS: Pete Koerber ATGS: Tony DiFalco	530-277-9261 702-592-9215	Air/Ground Primary Air/Ground Secondary (VTAC 12)		169.2000 154.4525 TT 156.7		
<u>Woodward Helibase (WWR)</u> HEB2 John Bragg	423-483-2798	Flight Following		169.7250 RX N1514		
HMGB 612CK J.R. Sullivan	210-396-3304					
HMGB 135BH Billy Groves	406-407-1521					
		Air/Guard		168.6250 RX/TX Tone 110.9		
		Deck		169.300		

9. HELICOPTERS (Use Additional Sheets As Necessary)

FAA N# or Designator	TY	MAKE/MODEL	BASE	START	REMARKS	FAA N# or Designator	TY	MAKE/MODEL	BASE	START	REMARKS
612 CK	1	SH3H	WWR	0930	State resource						
135BH	1	S-70	WWR	0930	State resource						

TYPE/FUNCTION	NAME OF PERSONNEL OR CARGO (if applicable) OR INSTRUCTIONS FOR TACTICAL AIRCRAFT	MISSION START	FLY FROM	FLY TO
Water Drops	As Requested	0930	Woodward HB	Fire

34 Complex

Incident Action Plan
Monday 4/16/2018

Health and Safety Message

Incident: 34 Complex	Date Prepared: 4/15/2018	Time Prepared: 1500	Operational Period: Day and Night Shift
-------------------------	-----------------------------	------------------------	--

Major Hazards and Risks:

Transition

Fire Behavior

Oil/Gas Sites

Driving

Transition: Unified command with new team starts today. Know who you work for, get clear instructions, and check your communications before leaving ICP

Fire Behavior: Dry fuels, expect rates of fire spread of 1 to 1 ½ miles per hour.

Oil/Gas Sites: Numerous sites, exposed and covered pipe lines, and wind mills are inside fire perimeter. Windssock marked areas may indicate presence of highly toxic gases. Stay upwind of these.

Driving: Lights on, Obey speed limits, Seat belts, School bus traffic, School zones, Town traffic, Dusty dirt roads, Etc. Drive defensively at all times.

Standard Order #8 – Give clear instructions and be sure they are understood.

LOOKOUTS

COMMUNICATIONS

ESCAPE ROUTES

SAFETY ZONES

Safety Officers: Larry Holsomback, Mark Sullivan, Buddy Kelley

Think safety first in all actions you take

INCIDENT SAFETY ANALYSIS 215a

34 Complex - Monday, April 16, 2018

8. Location	9. Hazard	6. Control or Abatement Action (Engineering, Administrative, PPE, Avoidance, Education, etc)
All	Air Operations	<ul style="list-style-type: none"> ~ Follow " Aviation Watch-Out Situations" on page 44, IRPG. ~ Don't plan on air resources for medical transport or resupply. ~ Refer to page 57, IRPG for directing bucket drops. ~ Ensure positive communication with all air resources.
All	Extreme Fire Behavior	<ul style="list-style-type: none"> ~ Share weather observations with all personnel assigned to division. ~ Establish "Trigger Points" to withdraw. ~ Use "Risk Management" process prior to engaging in suppression actions, refer to page 1, IRPG.
All	Power Utilities	<ul style="list-style-type: none"> ~ Notify all personnel of down electrical lines ~ Always treat downed wires as energized. ~ Identify and avoid high tension transmission lines. ~ Identify and avoid high pressure natural gas lines. ~ Be aware of utility restoration in your work area.
All	Driving & Traffic	<ul style="list-style-type: none"> ~ Practice "Defensive Driving" techniques traveling on all roads and city streets. ~ Watch for School Zones ~ Follow Driving LCES (Lights, Chock blocks, Emergency brake, Seat belts. ~ Yield to pedestrians and bicycles. ~ Observe posted speed limits. ~ Avoid distractions (eating, cell phones, radio). ~ Ensure that windshields are kept clean of dust and bugs.
IA	Initial Attack	<ul style="list-style-type: none"> ~If Delegated or requested follow IA procedures ~Provide local briefing for local protocols ~Coordinate with operations ~IRPG front cover
All	Oil & Gas Lines	<ul style="list-style-type: none"> ~ Identify sites, Wind Socks indicate presence of Highly Toxic Gases, Stay up Wind. ~ Do not depend on sense of smell for warning. ~ Park at least 50 feet away from facilities and equipment. ~ Avoid low lying areas during stagnant air conditions. ~ Be Aware of exposed or swallow buried pipes and utilities.
All	Heavy Equipment Operations	<ul style="list-style-type: none"> ~ Ensure communications are established with operators. ~ Use hand signals if other communications are unavailable. ~ Maintain a 50'-100' exclusion area around equipment and increase it to 1 1/2 times tree height when in timber. ~ Use a spotter when backing. ~ Avoid working below heavy equipment.
All	Communications	<ul style="list-style-type: none"> ~ Maintain communication with aviation resources, and suppression organization. ~ Ensure all know frequency and protocol for contacting resources. ~ Utilize the ICS 205. ~ Utilize human repeaters when working in dead spots.
All	Medical Extraction (Air) >3 hours	<ul style="list-style-type: none"> ~ Approved, Adequate Extraction points are identified, approved known and re-assessed as needed. ~ Ensure Adequate ALS in appropriate locations to respond ~ Pre-identify incident and local emergency air response and capability
All	Medical Extraction (ground >3 hours)	<ul style="list-style-type: none"> ~ Approved Adequate Extraction points are identified and approved, known and reassessed as needed. ~ Ensure adequate ALS is in appropriate locationsto respond ~ Consider air extraction if available
All	Night Operations	<ul style="list-style-type: none"> ~ Maintain high visibility in work area and wear vest while in roadway. ~ Ensure personnel have a personal light (headlamp). ~ Watch for signs of fatigue. ~ Take breaks away from areas of known hazard.

INCIDENT SAFETY ANALYSIS 215a

All	Structure Protection & HAZMAT	~ Review "Wildland Urban Interface" Watch outs, IRPG page 12. ~ Use "Structure Assessment" checklist, IRPG pages 12-16. ~ Follow "HAZMAT Incident Operations" on pages 34-36 in IRPG.
All	Wildlife & Livestock	~ Watch out for wildlife & livestock inside fire area and along roadways. ~ Clean up all debris and trash during each operational period.

MEDICAL PLAN	1. Incident Name 34 Complex	2. Date Prepared 04/15/18	3. Time Prepared 1530	4. Operational Period Day Shift/Night Shift			
5. Incident Medical Aid Station							
Medical Aid Stations	Location		Paramedics Yes No				
Jeff Cummings MEDL EMT-F	317-730-6653	ICP 108 Temple Houston Dr, Woodward, Ok		X			
Patrick Horan EMPF	303-641-1137	Division A		X			
Wilson Rowell	334-504-2608	ICP 108 Temple Houston Dr, Woodward, OK		X			
6. Transportation							
A. Air Ambulance Services							
Name	Address	Phone	Paramedics Yes No				
Air Evac Life Team	1620 Santa Fe, Woodward, OK 73801	1-800-247-3822	X				
(no winds over 45mph)							
(no wind gusts exceeding 18mph)							
B. Incident Ambulances							
Name	Location	Paramedics Yes No					
Woodward County EMS	1510 Downs Ave, Woodward, OK 73801	X					
7. Hospitals							
Name	Address	Travel Time Air Ground		Phone	Helipad Yes No	Burn Center Yes No	
University Medical Center	700 NE 13th, Lincoln Ave, OKC Level 1 Trauma	60 min	120m	405-271-4700	X		X
Integris Baptist Medical Center	3300 NW EXPY OKC Burn Center/Level 3	60 min	120m	405-949-3011	X		X
St. Mary's Regional	305 S. 5th Enid, OK Trauma/Level 3	30 min	90 min	580-233-6100	X		X
Integris Bass	600 S. Monroe, Enid, OK Cardiac/Level 3	30 min	90 min	580-233-2300	X		X
Alliance Health Woodward	1620 Santa Fe, Woodward, OK General/Level 3	15 min	20 min	877-863-9595	X		X
** Note: Air transport times are from the incident to the hospital only. Does not include flight time to the incident **							
8. Medical Emergency Procedures							
<ul style="list-style-type: none"> - Patient or nearest responder will notify Supervisor who will respond to the scene and become the incident within an incident (IWI) IC. - IWI Commander will notify nearest medical responder and ICP/Communications of the incident. - IWI Commander will provide the ICP/medical responders with the "Nine Line" Medical Incident Report attached to this 206 							
Prepared by (Medical Unit Leader) Jeff Cummings MEDL				10. Reviewed by (Safety Officer) Mark Sullivan SOFR			

INCIDENT RADIO COMMUNICATIONS PLAN	1. Incident Name	2. Date Time Prepared	3. Operational Period Date/Time
	CHEROKEE NORTH ZONE COMPLEX	4/15/18 1430	4/16/2018 0800-2000

4. Basic Radio Channel Utilization
Mode: W= Wideband, N= Narrowband, D= Digital, M= Mixed

CHAN NAME	CH #	Function	Frequency	Tone/NAC	Mode	TGID	Assignment	Remarks
FT SUPPLY	1	COMMAND	RX: 159.39 TX: 151.28	94.8	Analog		ALL DIVISIONS	
VCALL 10	2	TAC	RX: 155.7525 TX: 155.7525	156.7	Analog		A, Night Shift	
VCALL 11	3	TAC	RX: 151.1375 TX: 151.1375	156.7	Analog		J, Structure Protection	
VTAC 13	4	TAC	RX: 158.7375 TX: 158.7375	156.7	Analog		D	
VTAC 14	5	TAC	RX: 159.4725 TX: 159.4725	156.7	Analog		G	
VTAC 12	6	AIR to GROUND	RX: 154.4525 TX: 154.4525	156.7	Analog		AIR to GROUND	
	7		RX: TX:		Analog			
	8		RX: TX:		Analog			
	9		RX: TX:		Analog			
	10		RX: TX:		Analog			
	11		RX: TX:		Analog			
	12		RX: TX:		Analog			
	13		RX: TX:		Analog			
	14		RX: TX:		Analog			
	15		RX: TX:		Analog			
AIR GUARD	16	AIR GUARD	RX: 168.6250 TX: 168.6250	110.9	Analog			

5. Prepared by (Communications Unit)
TERRY BRINSON COML

Note: This is not a standard NWCG ICS205 Form

Human Resource Message

The mission of the Gold Team is to safely, effectively and efficiently manage the 34 Complex by maintaining a team of skilled and productive personnel.

During this incident we will strive to successfully complete our mission and achieve our objectives while creating a positive, drug and alcohol free work environment for all assigned incident personnel.

The Gold Team fully supports EEO and will not tolerate sexual harassment or any form of discrimination!

All inappropriate behavior will be dealt with promptly. Disciplinary action and reporting back to an individual's home unit will be initiated as necessary.

Please report any incidents of inappropriate behavior to your supervisor, Danny Bryant, Debbie Beard or myself immediately.

Steve Parrish, Incident Commander



34 Complex Fire: How to reach us!

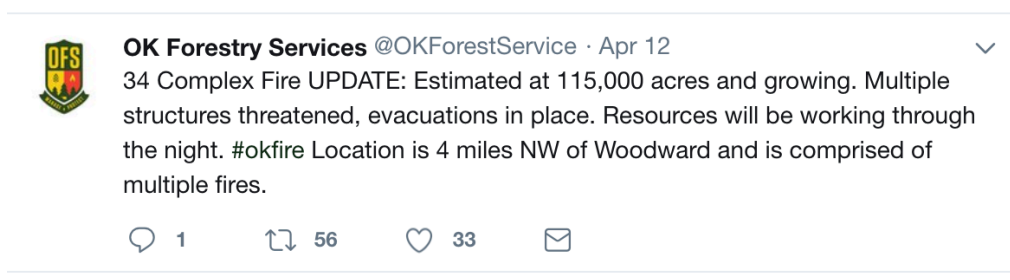
Public Information Phone: 405-730-9107

Email: OK34ComplexFire@gmail.com

Facebook: <https://www.facebook.com/OklahomaForestry/>



Twitter: <https://twitter.com/OKForestService>



Inciweb

<https://inciweb.nwcg.gov/incident/5747/>

34 Complex OK-OKS-180073 IAP Map 04/16/18 Day

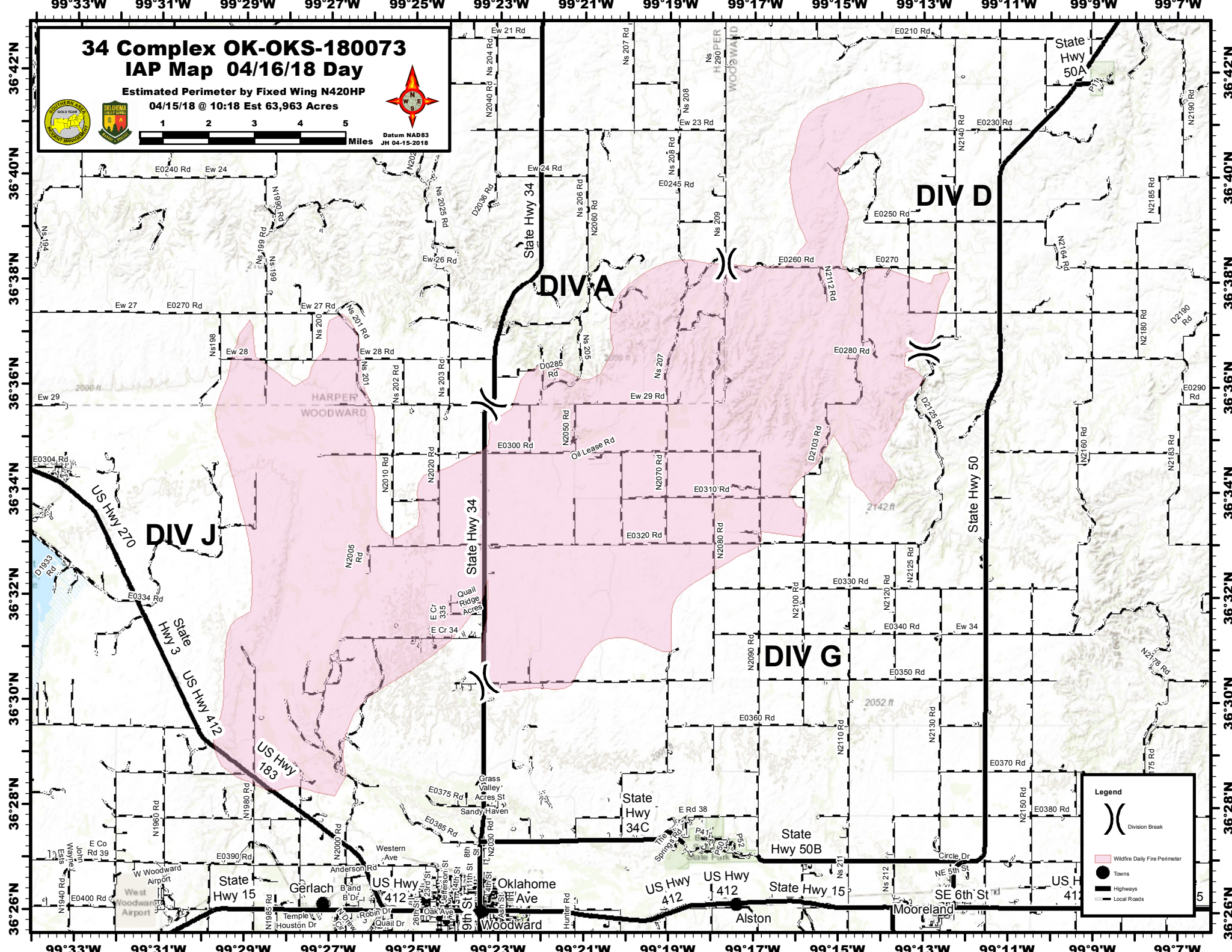
Estimated Perimeter by Fixed Wing N420HP
04/15/18 @ 10:18 Est 63,963 Acres



1 2 3 4 5 Miles



Datum NAD83
JH 04-15-2018



Legend

- Wildfire Daily Fire Perimeter
- Towns
- Highways
- Local Roads
- Division Break

PHONE LIST - 34 Complex

Position	Name	Phone Number	Position	Name	Phone Number
COMMAND			FINANCE		
Incident Commander	Steve Parrish	850-524-1244	Chief	Wanda Kelley	423-584-1472
Incident Commander (t)	Debbie Beard	850-524-9966	Chief (t)	Jennifer Cross	423-715-9025
Deputy Incident Commander	Danny Bryant	601-500-2505	Time Unit Leader	Jean Frick	828-361-5361
Liaison Officer	Bryan Swanson	804-840-2815	Time Unit Leader (t)	Sherise Foster	919-943-7843
Liaison Officer	Keith Lawrence	803-522-5264	Cost Unit Leader	Tom Steele	770-363-3583
Public Information	Bonnie Strawser	252-216-8667	Comp/Claims	Terri McDonald	352-454-5385
Public Information (t)	Donald Simpson	910-975-1895	Comp/Claims (t)	Pamela Stamper	276-389-7477
Safety Officer	Buddy Kelly	850-447-1344	Personel Time Recorder (t)	Gustavo Vallejo	423-284-1041
Safety Officer	Mark Sullivan	205-531-7183	PLANNING		
Safety Officer	Larry Holsomback	706-280-4716	Chief	Dave Berens	601-319-6823
OPERATIONS			Resource Unit Leader	Melonie Sellers	601-508-8997
Planning Ops	Ron Bertsch	706-515-5625	Resource Unit Leader	Carol O'Bryan	903-263-8704
Planning Ops (t)	Shawn Nagle	662-231-4024	Situation Unit Leader	Bill Coates	770-688-5721
Field Ops	Jeff Schardt	321-536-3501	Fire Behavior Analyst	Jamie Atkins	706-955-5986
Field Ops (t)	Dan Martin	479-774-5793	IMET	David Shallenberger	606-481-9238
Division A	Heath Thomas	501-208-7077	GISS	Chris Evans	928-273-4203
Division D	Greg Salansky	423-715-9632	GISS	Joseph Harsh	662-803-1973
Division D (t)	Jared Nobles	352-317-6297	Demob	Henry Hickerson	540-798-2218
Division G	Matt Johnson	870-415-0185	Check In	Angela Marcano	706-474-4026
Division J	Tom Crews	252-216-6361	Check In (t)	Jocelyn Howell	214-934-0138
Structure Protection Group	Randy Jones	352-267-7700	Training Specialist	Diane Bolt	828-553-8870
Structure Protection Group (t)	Jason Klawinsky	936-520-8827	Compter Tech	John Edwards	850-261-9127
Night Shift Group	Dennis Gaston	804-840-5493	Compter Tech	Nikita Carty	305-878-9907
AIR OPERATIONS			LOGISTICS		
Air Operation Branch Director	Bruce Wicks	530-906-2224	Chief	Susan Cornett	903-930-5321
Air Support Group Supervisor	Pete Kubiak	404-661-4819	Chief (t)	Cameron Crisp	304-642-2035
Air Tatical Group Supervisor	Tony Defalco	702-592-9215	Deputy	Duane Cihlar	218-370-1662
Air Tatical Group Supervisor	Pete Kubler	530-277-9261	Supply Unit	Ron Zabkx	603-630-4916
Helibase Manager	John Bragg	423-483-2798	Supply Unit (t)	John Dunlap	850-643-6373
			Facilities Unit	Gene-Paul Matson	434-665-0444
			Ground Support Unit Leader	Todd Waller	501-337-6308
			Ordering Manager	Nina Donley	205-243-8816
			Receiving & Distribution	Chris Combs	727-992-0046
			Communications	Terry Brinson	386-868-7649
			Medical Unit Leader	Jeffery Cummings	317-370-6653
			Security Manager	Tom Neal	618-201-2111

Medical Incident Report- "9 Line"

FOR ALL MEDICAL EMERGENCIES: IDENTIFY ON SCENE INCIDENT COMMANDER BY NAME AND POSITION AND ANNOUNCE "MEDICAL EMERGENCY" TO INITIATE RESPONSE FROM IMT COMMUNICATIONS/DISPATCH.

Use items one through nine to communicate situation to communications/dispatch.

1. CONTACT COMMUNICATIONS/DISPATCH

Ex: "Communications, Div. Alpha. Stand-by for Priority Medical Incident Report." (If life threatening request designated frequency be cleared for emergency traffic.)

2. INCIDENT STATUS: Provide incident summary and command structure.

Nature of Injury/Illness		<i>Describe the injury (Ex: Broken leg with bleeding)</i>
Incident Name		<i>Geographic Name + "Medical" (Ex: Trout Meadow Medical)</i>
Incident Commander		<i>Name of IC</i>
Patient Care		<i>Name of Care Provider (Ex: EMT Smith)</i>

3. INITIAL PATIENT ASSESSMENT: Complete this section for each patient. This is only a brief, initial assessment. Provide additional patient info after completing this 9 Line Report.

Number of Patients:	Male / Female	Age:	Weight:
Conscious? <input type="checkbox"/> YES <input type="checkbox"/> NO = MEDEVAC!			
Breathing? <input type="checkbox"/> YES <input type="checkbox"/> NO = MEDEVAC!			
Mechanism of Injury: <i>What caused the injury?</i>			
Lat/Long (Datum WGS84)			

4. SEVERITY OF EMERGENCY, TRANSPORT PRIORITY

SEVERITY	TRANSPORT PRIORITY
<input type="checkbox"/> URGENT-RED Life threatening injury or illness. <i>Ex: Unconscious, difficulty breathing, bleeding severely, 2° – 3° burns more than 4 palm sizes, heat stroke, disoriented.</i>	Ambulance or MEDEVAC helicopter. Evacuation need is IMMEDIATE.
<input type="checkbox"/> PRIORITY-YELLOW Serious Injury or illness. <i>Ex: Significant trauma, not able to walk, 2° – 3° burns not more than 1-2 palm sizes.</i>	Ambulance or consider air transport if at remote location. Evacuation may be DELAYED.
<input type="checkbox"/> ROUTINE-GREEN Not a life threatening injury or illness. <i>Ex: Sprains, strains, minor heat-related illness.</i>	Non-Emergency. Evacuation considered Routine of Convenience.

5. TRANSPORT PLAN:

Air Transport: (Agency Aircraft Preferred)

<input type="checkbox"/> Helispot	<input type="checkbox"/> Short-haul/Hoist	<input type="checkbox"/> Life Flight	<input type="checkbox"/> Other
Ground Transport:			
<input type="checkbox"/> Self-Extract	<input type="checkbox"/> Carry-Out	<input type="checkbox"/> Ambulance	<input type="checkbox"/> Other

6. ADDITIONAL RESOURCE/EQUIPMENT NEEDS:

<input type="checkbox"/> Paramedic/EMT(s)	<input type="checkbox"/> Crew(s)	<input type="checkbox"/> SKED/Backboard/C-Collar
<input type="checkbox"/> Burn Sheet(s)	<input type="checkbox"/> Oxygen	<input type="checkbox"/> Trauma Bag
<input type="checkbox"/> Medication(s)	<input type="checkbox"/> IV/Fluid(s)	<input type="checkbox"/> Cardiac Monitor/AED
<input type="checkbox"/> Other (i.e. splints, rope rescue, wheeled litter)		

7. COMMUNICATIONS:

Function	Channel Name/Number	Receive (Rx)	Tone/NAC *	Transmit (Tx)	Tone/NAC *
COMMAND	Ft. Supply	159.3900N		151.2800N	
AIR-TO-GRND	V-Tach 12	154.4525N		154.4525N	
TACTICAL	V-Tach 13	158.7375N		158.7375N	

*(NAC for digital radio system)

8. EVACUATION LOCATION:

Lat/Long (Datum WGS84)	
Patient's ETA to Evacuation Location:	
Helispot/Extraction Size and Hazards:	

9. CONTINGENCY:

<u>Considerations:</u> <i>If primary options fail, what actions can be implemented in conjunction with primary evacuation method? Be thinking ahead...</i>	REMEMBER: Confirm ETA's of resources ordered Act according to your level of training Be Alert. Keep Calm. Think Clearly. Act Decisively.
--	--