

Incident Action Plan

Unified Command



Day Operational Period

Friday

4/20/18

0800-2000



Woodward F.D.

Night Operational Period

Thursday / Friday

4/20/18 - 4/21/18

2000-0800

34 Complex

OK-OKS-180037

PNLN1P (1502)

FF2000000LN1PO Fund 18x

INCIDENT OBJECTIVES	1. Incident Name 34 Complex	2. Date Prepared 4/19/18	3. Time Prepared 1700
4. Operational Period DAY 4/20/18 0800 – 2000 NIGHT 4/20/18 – 4/21/18 2000-0800			
5. General Control Objectives For The Incident <u>Objectives for the Incident:</u> <ul style="list-style-type: none"> • Ensure protection of human life as a top priority through the use of sound risk management decisions in all actions. • Provide for protection of private property, infrastructure, State, County and Municipal facilities by using sound suppression tactics on all intial and extended attack fires. • Provide training opportunities to Oklahoma Forestry Services personnel to strengthen organizational capabilites and complete training assignments. • Ensure sensitivity to the impacts of suppression activites to private property by fostering and maintaining relationships with appropriate agencies, elected officials, business leaders and members of the public. • Provide accurate information messaging through coordination between the Southern Area Gold Team and Oklahoma Forestry Services Public Information Officers. 			
<u>Control Objectives:</u> <ul style="list-style-type: none"> • Utilize full suppression tactics to keep 34 Complex fire contained within the current footprint by utilizing a combination of ground and aerial resources. • Utilize strategic firing operations to prevent escape or stop forward spread of fire if appropriate and directed to do so by the Operations Section Chief. • Respond to new fires at the request of Oklahoma Forestry Services to support and suppress any new emerging incidents under a Unified Command Structure. 			
6. Weather forecast for Period Expect sky cover to be on the increase through the day as a frontal system approaches the region. Winds will increase through the day out of the southeast with some gusts in the afternoon reaching 25 mph. Relative humidity values will be much more improved due to the moist southeast flow into the area. As the low approaches, a chance of showers will move into the area after 1700L. This may bring a tenth of precip.			
7. General Safety Message Look up, look down, look all around for hazards, recognize them and mitigate them.			
8. ATTACHMENTS (X IF ATTACHED) <input checked="" type="checkbox"/> Organization List - ICS 203 <input checked="" type="checkbox"/> Medical Plan - ICS 206 [] _____ <input checked="" type="checkbox"/> Division Assignment Lists - ICS 204 [] Incident Map [] _____ <input checked="" type="checkbox"/> Communications Plan - ICS 205 [] Traffic Plan [] _____			
9. Prepared By (Planning Section Chief) /s/ Dave Berens		10. Approved By (Incident Commander) /s/ Danny Bryant	

ORGANIZATION ASSIGNMENT LIST			9.	Operations Section	
1. Incident Name		34 Complex	Planning Operations	Ron Bertsch, Shawn Nagle (t)	
2. Date			Field Operations	Jeff Schardt, Dan Martin (t)	
3. Time			Night Operations	Bryan Elam	
04/19/18		1700			
4. Operational Period			a.	Divisions/Groups	
04/20/18 DAY (0800 – 2000)		04/20/18 - 4/21/18 NIGHT (2000-0800)	Division	A	Sean Gast, Joe Pearlman (t)
5. Incident Commander and Staff			Division	D	Greg Salansky, Jared Nobles (t)
Incident Commander	Steve Parrish, Danny Bryant Todd Finley, Tom Marcom		Division	G	Matt Johnson
Liaison Officer	Keith Lawrence		Division	J	Tom Crews
Safety Officer	Buddy Kelley, Mark Sullivan, Larry Holsomback, Randy Miller		Group	Structure Protection	Randy Jones, Jason Klawinsky (t)
Information Officer	Bonnie Strawser, Donald Simon, John Nichols, Adam Solt		Group	Initial Attack #1	Heath Thomas, Mike Brod (t)
			Group	Initial Attack #2	Hans Rudolf
			Group	Night Shift	Jerry Anderson, Dennis Gaston (t) ,
6. Agency Reps					
Woodward F.D. Chief	Todd Finley				
Mooreland F.D. Chief	Tom Marcom				
Fort Supply F.D. Chief	Mike Petty				
Sharon F.D. Chief	Bill Phillips				
Mutual F.D. Chief	Kevin Mitchell		b.	Air Operations Branch	
Oklahoma Forestry Services	Mark Goeller		Air Operation Branch Director		Bruce Wicks
Oklahoma Emergency Management	Kristal Kuhn		Air Support Group Supervisor		Pete Kubiak
Woodward Emergency Management	Matt Lehenbauer		Air Tactical Group Supervisor		Tony Defalco
Mooreland Emergency Management	Jay Krukenberg		Air Tactical Group Supervisor		Pete Koerber
			Helibase Manager		John Bragg
7. Planning Section					
Chief	Dave Berens				
Resources Unit	Melonie Sellers, Carol O'Bryan				
Situation Unit	Bill Coates, E.J. Bunzendahl (t)				
FBAN	Jamie Atkins		8.	Logistics Section	
IMET	David Shallenberger		Chief		Susan Cornett, Cameron Crisp (t)
Geo. Info. Spec.	Chris Evans, Christian Vose, Joseph Harsh (t), JT Allen (t)		Deputy		Duane Cihlar
Demob Unit	Henry Hickerson		Supply Unit		Ron Zabka, John Dunlap (t)
Status Check-In	Angela Marcano, Jocelyn Howell (t)		Facilities Unit		Gene-Paul Matson, Nelson Gonzalez-Sullow (t)
Training	Diane Bolt		Base Camp		JaDe Fleck
ITSS	John Edwards, Nikita Carty (t)		Ground Support		Todd Waller, Kevin Wagner (t)
Documentation	Jan Grisedale		Equipment Manager		Tristan Jamieson, Jason Mchan
10. Finance Section			Ordering Manager		Nina Donley, Durinda Hulett
Chief	Wanda Kelley, Jennifer Cross (t)		Receiving & Distrib. Mgr.		Chris Combs
Time Unit	Jean Frick / Sherise Foster (t)		Communications Unit		Terry Brinson
Cost Unit	Tom Steele		Radio Operator		Daniel Brown, Tyler Befus, Reggie Escarlan
Comp/Claims	Terri McDonald, Pamela Stamper (t)		Medical Unit Leader		Jeffery Cummings
Personnel Time Recorder	Gustavo Vallejo (t)		Security		Tom Neal
Prepared by (RESL) /s/ Carol O'Bryan / Melonie Sellers					



INCIDENT Weather Forecast



FORECAST NO: 06

NAME OF FIRE: 34 Complex

PREDICTION FOR: Day/Night **SHIFT**

UNIT: Gold Team

SHIFT DATE: April 20 2018

SIGNED: David Shallenberger

TIME AND DATE

Incident Meteorologist

FORECAST ISSUED: 2000 April 19 2018

WEATHER DISCUSSION: Expect sky cover to be on the increase through the day as a frontal system approaches the region. Winds will increase through the day out of the southeast with some gusts in the afternoon reaching 25 mph. Relative humidity values will be much more improved due to the moist southeast flow into the area. As the low approaches, a chance of showers will move into the area after 1700L. This may bring a tenth of precip.

WEATHER FORECAST FRIDAY:

WEATHER: Partly cloudy, becoming mostly cloudy. A 30% chance of showers in the evening. Precipitation amounts around a 0.10.

TEMPERATURES: 60-65

HUMIDITY: 30% to 35%

20 FT WINDS: SE 5 to 10 mph early, then increasing with gusts to 25 mph in the afternoon

RFTI INDEX: 3 Elevated

HAINES INDEX: 4

DISPERSION: Poor in the morning around 20, increasing to fair in the afternoon around 40

WEATHER FORECAST FRIDAY NIGHT:

WEATHER: Cloudy with an 80% chance of showers and a few thunderstorms. Precipitation amounts between a 0.50 and 0.75.

TEMPERATURES: 40-45

HUMIDITY: 95% to 100%

20 FT WINDS: SE 5 to 15 mph with gusts up to 25 mph

RFTI INDEX: 3 Elevated

HAINES INDEX: 3

DISPERSION: Poor around 20

OUTLOOK FOR SATURDAY: The system will continue to move through the area with an 90% chance of showers and a few thunderstorms through the day on Saturday. The thunderstorms are not expected to be strong or severe. Total accumulation of rainfall will be around 0.75 and 1.00 from Friday night through the day on Saturday.

EXTENDED FORECAST SUNDAY AND MONDAY: As the system exits the area, a few showers will still be possible on Sunday. High pressure will move in with dry and cool conditions expected on Monday.

FIRE BEHAVIOR FORECAST

FORECAST NUMBER: 5	TYPE OF FIRE: Wildland
FIRE NAME: 34 Complex	OPERATIONAL PERIOD: Day/Night, Friday April 20 th , 2018
DATE ISSUED: April 19 th , 2018	TIME ISSUED: 2000
UNIT: OK - OKS-180037	SIGNED: <i>James Atkins</i> James Atkins, FBAN

INPUTS

WEATHER SUMMARY:

Partly cloudy becoming mostly cloudy.

Max Temp: 60-65 **Min Temp:** 50-55 **Min RH:** 30-40% **Max RH:** 80-90% (Excellent) **Winds (20'):** SE 10-20 Gusting 25 in the pm **LAL:** 2 **Haines:** 5 – Moderate **CWR:** 40%

OUTPUTS

FIRE BEHAVIOR

GENERAL

Complete curing of the vigorous herbaceous growth from the growing season has resulted in an above normal fuel loading. Persistent drought indices have resulted in very dry large fuels. Above normal fuel loadings in full dormancy and critical low 1000 hour fuel moistures are expected to continue to produce problematic fire behavior in the grass, shrub and timber.

Short range spotting from single and group tree torching (cedar/juniper) may produce 1/10th mile spotting. Slope and wind alignment will produce the worst case rate of spreads from below.

Fuel Model	Rate of Spread	Flame Length
GR2 short/grazed	0.1 – 0.5 mph	3-6 ft
GS3 2-3' tall heavy load	0.1 – 0.5 mph	4-12 ft
TU3 Shinnery Oak	0.05 – 0.25 mph	4-6 ft

1 Hour FM	10 Hour FM	100 Hour FM	1000 Hour FM	Burning Index-G	ERC-G
7%	9%	6%	4%	129	101
Herb FM	Woody FM	Cedar	Juniper	95 th %	97 th %
40	72	68	70		

Red Flag Threat Index for today: 3 "Critical Low"

POI: 40-50%

SPECIFIC:

34 Complex: Expect burning conditions to decrease as the day progresses and the moisture begins arriving from the west. Smoldering and creeping may continue in heavy dead and down fuels especially underneath canopy.

Initial Attack: IA fires will remain a valid concern throughout the day shift. Expect a moderate resistance to control on any new IA fires, but be mindful of the fuel loading, topography and wind speeds.

Night Operations: Fuel conditions will recover fairly quickly this afternoon as cloud cover, higher RH values and moisture moves into the fire area. Predicted fire behavior above remains valid until a wetting rain occurs over our area of IA responsibility.

AIR OPERATIONS:

Pay attention to the weather today especially as the moisture moves in this afternoon

SAFETY

Remain situationally aware. Communicate weather observations to remain informed on current weather. Make sure any and all hazards have been identified and eliminated prior to working in an area.

z Division/Group Assignment List (ICS 204 WF)

1. Incident Name:				3.			
34 Complex				Branch:		Division/Group:	
2. Operational Period: 0800 - 2000				A			
Date/Time From: 04/20/18 0800		Date/Time To: 04/20/18 2000					
4. Operations Personnel							
AIR ATTACK SUPERVISOR		Tony Defalco 4/28 Pete Koerber		FIELD OPERATIONS		Jeff Schardt 4/28 Dan Martin (t) 4/28	
DIVISION/GROUP SUPERVISOR		Sean Gast 4/29 Joe Pearlman (t) 4/28		PLANNING OPERATIONS		Ron Bertsh 4/28 Shawn Nagle (t) 4/26	
5. Resources Assigned this Period							
Strike Team / Task Force / Resource Designator			LWD	Leader	Number Persons	Drop Off PT./Time	Pick Up PT./Time
ENG T3 Utah Fire 16 E-70			4/30	Krista Spraycar	3	0800	2000
SOF2			4/29	Mark Sullivan	1	0800	2000
EMPF			4/29	Patrick Horan	1	0800	2000
6. Control Operations/Work Assignments:							
Task:							
<ul style="list-style-type: none"> Mop up and cold trail 1 chain in from perimeter of fire. 							
Purpose:							
<ul style="list-style-type: none"> Keep fire within current perimeter 							
End State:							
<ul style="list-style-type: none"> No lateral spread of fire, one chain mop up completed, and has not grown in size for one operational period. 							
7. Special Instructions:							
<ul style="list-style-type: none"> Establish and maintain LCES on 34 Complex and emerging fires. Document any damage or burned structures / infrastructure with a lat/long and photo Stay clear and capture any lat/long of any hazmat situation and notify immediate supervisor 							
8. Division/Group Communication Summary							
Function	Channel	Channel Name	RX Frequency N/W	RX Tone/NAC	TX Frequency N/W	TX Tone/NAC	Mode
COMMAND	1	MESA	170.45		168.1		Analog
TACTICAL	4	VCALL10	155.7525		155.7525	156.7	Analog
AIR TO GROUND	8	A/G Primary	169.2000		169.2000		Analog
9. Prepared By (Resource Unit Leader)				Approved By (Planning Section Chief)		Date	Time
Carol O'Bryan / Melonie Sellers				Dave Berens		04/19/18	2000

Division/Group Assignment List (ICS 204 WF)

1. Incident Name:				3.			
<h1>34 Complex</h1>				Branch:		Division/Group: <h1>D</h1>	
2. Operational Period: 0800-2000							
Date/Time From: 04/20/18 0800		Date/Time To: 04/20/18 2000					
4. Operations Personnel							
AIR ATTACK SUPERVISOR		Tony Defalco 4/28 Pete Koerber		FIELD OPERATIONS		Jeff Schardt 4/28 Dan Martin (t) 4/28	
DIVISION/GROUP SUPERVISOR		Greg Salansky 4/28 Jared Nobles (t) 4/28		PLANNING OPERATIONS		Ron Bertsh 4/28 Shawn Nagle (t) 4/26	
5. Resources Assigned this Period							
Strike Team / Task Force / Resource Designator		LWD	Leader	Number Persons	Drop Off PT./Time	Pick Up PT./Time	
TFLD		4/28	Max Twombly	1	0800	2000	
ENG T4 Utah Fire 14 E-15		4/30	Israel Justice	3	0800	2000	
SOF2		4/28	Buddy Kelley	1	0800	2000	
EMPF		4/29	Matt Jones	1	0800	2000	
6. Control Operations/Work Assignments:							
Task:							
<ul style="list-style-type: none"> Mop up and cold trail 1 chain in from perimeter of fire. 							
Purpose:							
<ul style="list-style-type: none"> Keep fire within current perimeter 							
End State:							
<ul style="list-style-type: none"> No lateral spread of fire, one chain mop up completed, and has not grown in size for one operational period. 							
7. Special Instructions:							
<ul style="list-style-type: none"> Establish and maintain LCES on 34 Complex and emerging fires. Document any damage or burned structures / infrastructure with a lat/long and photo Stay clear and capture any lat/long of any hazmat situation and notify immediate supervisor 							
8. Division/Group Communication Summary							
Function	Channel	Channel Name	RX Frequency N/W	RX Tone/NAC	TX Frequency N/W	TX Tone/NAC	Mode
COMMAND	1	MESA	170.45		168.1		Analog
TACTICAL	6	VTAC 13	158.7375		158.7375	156.7	Analog
AIR TO GROUND	8	A/G Primary	169.2000		169.2000		Analog
9. Prepared By (Resource Unit Leader)			Approved By (Planning Section Chief)			Date	Time
Carol O'Bryan / Melonie Sellers			Dave Berens			04/19/18	2000

Division/Group Assignment List (ICS 204 WF)

1. Incident Name:				3.			
<h1>34 Complex</h1>				Branch:		Division/Group: <h1 style="font-size: 2em;">G</h1>	
2. Operational Period: 0800 - 2000							
Date/Time From: 04/20/18 0800		Date/Time To: 04/20/18 2000					
4. Operations Personnel							
AIR ATTACK SUPERVISOR		Tony Defalco Pete Koerber		4/28		FIELD OPERATIONS	
						Jeff Schardt 4/28 Dan Martin (t) 4/28	
DIVISION/GROUP SUPERVISOR		Matt Johnson		4/28		PLANNING OPERATIONS	
						Ron Bertsh 4/28 Shawn Nagle (t) 4/26	
5. Resources Assigned this Period							
Strike Team / Task Force / Resource Designator		LWD	Leader		Number Persons	Drop Off PT./Time	Pick Up PT./Time
TFLD		4/28	James Wettstaed		1	0800	2000
HC2IA FL ST #1 Squad 1 C-4		5/03	Jason Foshee		10	0800	2000
ENG T4 Dragon Fighters E-14		4/30	Matt Helgeson		3	0800	2000
EMPF		4/29	Eddy Rowell		1	0800	2000
6. Control Operations/Work Assignments:							
Task:							
<ul style="list-style-type: none"> Mop up and cold trail 1 chain in from perimeter of fire. 							
Purpose:							
<ul style="list-style-type: none"> Keep fire within current perimeter 							
End State:							
<ul style="list-style-type: none"> No lateral spread of fire, one chain mop up completed, and has not grown in size for one operational period. 							
7. Special Instructions:							
<ul style="list-style-type: none"> Establish and maintain LCES on 34 Complex and emerging fires. Document any damage or burned structures / infrastructure with a lat/long and photo Stay clear and capture any lat/long of any hazmat situation and notify immediate supervisor 							
8. Division/Group Communication Summary							
Function	Channel	Channel Name	RX Frequency N/W	RX Tone/NAC	TX Frequency N/W	TX Tone/NAC	Mode
COMMAND	1	MESA	170.45		168.1		Analog
COMMAND	2	BRY SIN	169.375		164.7125		Analog
TACTICAL	7	VTAC 14	159.4725		159.4725	156.7	Analog
AIR TO GROUND	8	A/G Primary	169.2000		169.2000		Analog
9. Prepared By (Resource Unit Leader)			Approved By (Planning Section Chief)			Date	Time
Carol O'Bryan / Melonie Sellers			Dave Berens			04/19/18	2000

Division/Group Assignment List (ICS 204 WF)

1. Incident Name:				3.			
<h1>34 Complex</h1>				Branch:		Division/Group: <h1 style="text-align: center;">J</h1>	
2. Operational Period: 0800 - 2000							
Date/Time From: 04/20/18 0800		Date/Time To: 04/20/18 2000					
4. Operations Personnel							
AIR ATTACK SUPERVISOR		Tony Defalco Pete Koerber		4/28		FIELD OPERATIONS	
						Jeff Schardt Dan Martin (t)	
DIVISION/GROUP SUPERVISOR		Tom Crews		4/28		PLANNING OPERATIONS	
						Ron Bertsh Shawn Nagle (t)	
5. Resources Assigned this Period							
Strike Team / Task Force / Resource Designator		LWD	Leader		Number Persons	Drop Off PT./Time	Pick Up PT./Time
TFLD		4/27	Tony Collins		1	0800	2000
HC2IA FL ST #1 Squad 2 C-4		5/03	Randy Tharp		10	0800	2000
ENG T6 Griffith E-4		4/30	William Griffith		3	0800	2000
SOF2		4/30	Randy Miller		1	0800	2000
6. Control Operations/Work Assignments:							
Task:							
<ul style="list-style-type: none"> Mop up and cold trail 1 chain in from perimeter of fire. 							
Purpose:							
<ul style="list-style-type: none"> Keep fire within current perimeter 							
End State:							
<ul style="list-style-type: none"> No lateral spread of fire, one chain mop up completed, and has not grown in size for one operational period. 							
7. Special Instructions:							
<ul style="list-style-type: none"> Establish and maintain LCES on 34 Complex and emerging fires. Document any damage or burned structures / infrastructure with a lat/long and photo Stay clear and capture any lat/long of any hazmat situation and notify immediate supervisor 							
8. Division/Group Communication Summary							
Function	Channel	Channel Name	RX Frequency N/W	RX Tone/NAC	TX Frequency N/W	TX Tone/NAC	Mode
COMMAND	1	MESA	170.45		168.1		Analog
COMMAND	3	FT SUPPLY	159.39		151.28	94.8	Analog
TACTICAL	5	VTAC 11	151.1375		151.1375	156.7	Analog
AIR TO GROUND	8	A/G Primary	169.2000		169.2000		Analog
9. Prepared By (Resource Unit Leader)				Approved By (Planning Section Chief)		Date	
Carol O'Bryan / Melonie Sellers				Dave Berens		04/19/18	
						Time	
						2000	

Division/Group Assignment List (ICS 204 WF)

1. Incident Name:			3.				
34 Complex			Branch:		Division/Group:		
2. Operational Period: 0800 - 2000					Structure Protection		
Date/Time From: 04/20/18 0800		Date/Time To: 04/20/18 2000					
4. Operations Personnel							
AIR ATTACK SUPERVISOR		Tony Delfalco 4/28 Pete Koerber		FIELD OPERATIONS		Jeff Schardt 4/28 Dan Martin (t) 4/28	
DIVISION/GROUP SUPERVISOR		Randy Jones 4/28 Jason Klawinsky (t) 4/28		PLANNING OPERATIONS		Ron Bertsh 4/28 Shawn Nagle (t) 4/26	
5. Resources Assigned this Period							
Strike Team / Task Force / Resource Designator	LWD	Leader	Number Persons	Drop Off PT./Time	Pick Up PT./Time		
6. Control Operations/Work Assignments:							
Task:							
<ul style="list-style-type: none"> Assess and plan for structure protection. 							
Purpose:							
<ul style="list-style-type: none"> Identify and capture tactical measures to mitigate any threats to infrastructure. 							
End State:							
<ul style="list-style-type: none"> Contingency plan for structure protection. 							
7. Special Instructions:							
<ul style="list-style-type: none"> Establish and maintain LCES on 34 Complex and emerging fires. Document any damage or burned structures / infrastructure with a lat/long and photo Stay clear and capture any lat/long of any hazmat situation and notify immediate supervisor 							
8. Division/Group Communication Summary							
Function	Channel	Channel Name	RX Frequency N/W	RX Tone/NAC	TX Frequency N/W	TX Tone/NAC	Mode
COMMAND	1	MESA	170.45		168.1		Analog
TACTICAL	5	VTAC 11	151.1375		151.1375	156.7	Analog
AIR TO GROUND	8	A/G Primary	169.2000		169.2000		Analog
9. Prepared By (Resource Unit Leader)			Approved By (Planning Section Chief)			Date	Time
Carol O'Bryan / Melonie Sellers			Dave Berens			04/19/18	2000

Division/Group Assignment List (ICS 204 WF)

1. Incident Name:				3.			
34 Complex				Branch:		Division/Group:	
2. Operational Period: 0800 - 2000				Initial Attack #1			
Date/Time From: 04/20/18 0800		Date/Time To: 04/20/18 2000					
4. Operations Personnel							
AIR ATTACK SUPERVISOR		Tony Delfalco 4/28 Pete Koerber		FIELD OPERATIONS		Jeff Schardt 4/28 Dan Martin (t) 4/28	
DIVISION/GROUP SUPERVISOR		Heath Thomas 4/28 Mike Brod (t) 4/29		PLANNING OPERATIONS		Ron Bertsh 4/28 Shawn Nagle (t) 4/26	
5. Resources Assigned this Period							
Strike Team / Task Force / Resource Designator		LWD	Leader	Number Persons	Drop Off PT./Time	Pick Up PT./Time	
TFLD	O-54	5/03	James Yacomb	1	0800	2000	
ENG T4 BLM	E-12	4/30	Laif Morrison	3	0800	2000	
ENG T4 Heat Seeker 18	E-13	4/30	Dustin Johnson	3	0800	2000	
HEQB (t)	O-60	5/03	Austin Sewell	1	0800	2000	
DZ T2 Cornelius Farms	E-28	5/03	Alex Cornelius	1	0800	2000	
EMPF		4/28	John Dunzweiler	1	0800	2000	
6. Control Operations/Work Assignments:							
Task:							
<ul style="list-style-type: none"> Provide for assistance to requests for initial attack by Oklahoma Forestry Services and cooperators. 							
Purpose:							
<ul style="list-style-type: none"> To support local IA capabilities. 							
End State:							
<ul style="list-style-type: none"> IA fires after establishing LCES and command structures and contain fire where and only when safe to do so. 							
7. Special Instructions:							
<ul style="list-style-type: none"> Establish and maintain LCES on 34 Complex and emerging fires. Stay clear and capture any lat/long of any hazmat situation and notify immediate supervisor 							
8. Division/Group Communication Summary							
Function	Channel	Channel Name	RX Frequency N/W	RX Tone/NAC	TX Frequency N/W	TX Tone/NAC	Mode
COMMAND	1	MESA	170.45		168.1		Analog
TACTICAL	6	VTAC 13	158.7375		158.7375	156.7	Analog
AIR TO GROUND	9	VTAC 12	154.4525		154.4525	156.7	Analog
9. Prepared By (Resource Unit Leader)			Approved By (Planning Section Chief)			Date	Time
Carol O'Bryan / Melonie Sellers			Dave Berens			04/19/18	2000

Division/Group Assignment List (ICS 204 WF)

1. Incident Name:			3.				
<h1>34 Complex</h1>			Branch:		Division/Group: <h1>Initial Attack #2</h1>		
2. Operational Period: 0800 - 2000							
Date/Time From: 04/20/18 0800		Date/Time To: 04/20/18 2000					
4. Operations Personnel							
AIR ATTACK SUPERVISOR		Tony Delfalco 4/28 Pete Koerber		FIELD OPERATIONS		Jeff Schardt 4/28 Dan Martin (t) 4/28	
DIVISION/GROUP SUPERVISOR		Hans Rudolf 5/3		PLANNING OPERATIONS		Ron Bertsh 4/28 Shawn Nagle (t) 4/26	
5. Resources Assigned this Period							
Strike Team / Task Force / Resource Designator	LWD	Leader	Number Persons	Drop Off PT./Time	Pick Up PT./Time		
6. Control Operations/Work Assignments:							
Task:							
<ul style="list-style-type: none"> Provide for assistance to requests for initial attack by Oklahoma Forestry Services and cooperators. 							
Purpose:							
<ul style="list-style-type: none"> To support local IA capabilities. 							
End State:							
<ul style="list-style-type: none"> IA fires after establishing LCES and command structures and contain fire where and only when safe to do so. 							
7. Special Instructions:							
<ul style="list-style-type: none"> Establish and maintain LCES on 34 Complex and emerging fires. Stay clear and capture any lat/long of any hazmat situation and notify immediate supervisor 							
8. Division/Group Communication Summary							
Function	Channel	Channel Name	RX Frequency N/W	RX Tone/NAC	TX Frequency N/W	TX Tone/NAC	Mode
COMMAND	1	MESA	170.45		168.1		Analog
TACTICAL	7	VTAC 14	159.4725		159.4725	156.7	Analog
AIR TO GROUND	9	VTAC 12	154.4525		154.4525	156.7	Analog
9. Prepared By (Resource Unit Leader)			Approved By (Planning Section Chief)		Date		Time
Carol O'Bryan / Melonie Sellers			Dave Berens		04/19/18		2000

Division/Group Assignment List (ICS 204 WF)

1. Incident Name:				3.					
<h1>34 Complex</h1>				Branch:		Division/Group:			
2. Operational Period: 2000 - 0800						<h1>Night Shift</h1>			
Date/Time From: 04/20/18 2000		Date/Time To: 04/20/18 0800							
4. Operations Personnel									
AIR ATTACK SUPERVISOR		Tony Delfalco 4/28 Pete Koerber		NIGHT OPERATIONS		Bryan Elam 4/30			
DIVISION/GROUP SUPERVISOR		Jerry Anderson 4/28 Dennis Gaston (t) 4/29		PLANNING OPERATIONS		Ron Bertsh 4/28 Shawn Nagle (t) 4/26			
5. Resources Assigned this Period									
Strike Team / Task Force / Resource Designator			LWD	Leader	Number Persons	Drop Off PT./Time	Pick Up PT./Time		
ENG T3	Truckee Meadows	E-71	4/29	Ryan Rizzuto	4	2000	0800		
ENG T6	Scholl Fire & Fuels	E-10	4/29	Eric Pritchard	3	2000	0800		
6. Control Operations/Work Assignments:									
Task:									
<ul style="list-style-type: none"> Be available to respond to needs during nighttime operational period. 									
Purpose:									
<ul style="list-style-type: none"> Keep fire within perimeter. 									
End State:									
<ul style="list-style-type: none"> No lateral spread of fire, one chain mop up completed, and has not grown in size for one operational period. 									
7. Special Instructions:									
<ul style="list-style-type: none"> Establish and maintain LCES on 34 Complex and emerging fires. Document any damage or burned structures / infrastructure with a lat/long and photo. Stay clear and capture any lat/long of any hazmat situation and notify immediate supervisor. 									
8. Division/Group Communication Summary									
Function	Channel	Channel Name	RX Frequency N/W	RX Tone/NAC	TX Frequency N/W	TX Tone/NAC	Mode		
COMMAND	1	MESA	170.45		168.1		Analog		
TACTICAL	4	VCALL 10	155.7525		155.7525	156.7	Analog		
AIR TO GROUND	8	A/G Primary	169.2000		169.2000		Analog		
9. Prepared By (Resource Unit Leader)				Approved By (Planning Section Chief)		Date		Time	
Carol O'Bryan / Melonie Sellers				Dave Berens		04/19/18		2000	

Division/Group Assignment List (ICS 204 WF)

1. Incident Name:			3.				
<h1>34 Complex</h1>			Branch:		Division/Group: <h1>Rhea Fire</h1>		
2. Operational Period: 0800 - 2000							
Date/Time From: 04/20/18 0800		Date/Time To: 04/20/18 2000					
4. Operations Personnel							
AIR ATTACK SUPERVISOR				FIELD OPERATIONS			
DIVISION/GROUP SUPERVISOR				PLANNING OPERATIONS			
5. Resources Assigned this Period							
Strike Team / Task Force / Resource Designator		LWD	Leader		Number Persons	Drop Off PT./Time	Pick Up PT./Time
TFLD		3/1	Josh Hernandez		1	0800	2000
ENG T3 Lefthand		E-17 4/28	Melissa Friess		3	0800	2000
ENG T6 Pat-Rick B56463		E-5 4/29	Benjamin Castle		2	0800	2000
ENG T6 Pat-Rick C44474		E-8 4/29	Charles Perkins		2	0800	2000
ENG T6 Don Crane		E-3 4/29	Don Crane		2	0800	2000
ENG T6 MSN XR		E-7 4/30	Waymon Fondren		3	0800	2000
ENG T6 Attack One		E-9 4/30	David Knowles		3	0800	2000
6. Control Operations/Work Assignments:							
Task:							
<ul style="list-style-type: none"> Provide resources to the Rhea Fire 							
Purpose:							
<ul style="list-style-type: none"> To implement collaborative sharing of resources 							
End State:							
<ul style="list-style-type: none"> Resources will be utilized for wildland fire operations at the Rhea Fire. 							
7. Special Instructions:							
<ul style="list-style-type: none"> Travel to Taloga for briefing at 0800 to receive operational assignments for 4/19 – 4/21/18 See Rhea Fire Communications Plan for radio frequencies. 							
*** Taloga Briefing Location** 698 West Ruble Ave Taloga, OK							
8. Division/Group Communication Summary							
Function	Channel	Channel Name	RX Frequency N/W	RX Tone/NAC	TX Frequency N/W	TX Tone/NAC	Mode
COMMAND							
TACTICAL							
AIR TO GROUND							
9. Prepared By (Resource Unit Leader) Carol O'Bryan / Melonie Sellers			Approved By (Planning Section Chief) Dave Berens			Date 04/19/18	Time 2000

AIR OPERATIONS SUMMARY

OPERATIONAL PERIOD DATE: **04-20-2018**

0800-2000

1. INCIDENT NAME: 34 Complex	2. PREPARED BY: Bruce Wicks PREPARED DATE/TIME: 04/19/2018 1850	3. Sunrise: 0657 Sunset: 2016
4. REMARKS (Safety Notes, Hazards, Air Operations Special Equipment., etc.): Medivac Aircraft: Air Evac Do not over fly structures with external load missions. All aircraft will use strobes and running lights in smoky conditions. Hazards: Snags, non-incident aircraft, and winds. <u>Squawk 1255</u> <u>Cease all operations at sunset</u>		5. <p style="text-align: center; color: red; font-weight: bold;">TFR 8/0045 RELEASED</p>

6. PERSONNEL	Phone	7. FREQUENCIES	AM	FM	8. FIXED WING	FAA#/Base	
AOBD---Bruce Wicks ASGS---Pete Kubiak	530-906-2224 404-661-4819	Air/Air Rotor Air/Air Fixed Wing	118.9250 119.9500			Air Attack Air Attack	AC 690 N848CE – AVK AC 500B – N112AA – AVK
ATGS: Pete Koerber – 8CE ATGS: Tony DeFalco – 0FT	530-277-9261 702-592-9215	Air/Ground Primary Air/Ground For IA (VTAC 12)		169.2000 154.4525 TX 156.7			
<u>Woodward Helibase (WWR)</u> HEB2 John Bragg	423-483-2798	National Flight Following		168.650 TX 110.9			
HMGB 612CK J.R. Sullivan	210-396-3304						
HMGB 135BH Billy Groves	406-407-1521						
		Air/Guard Deck		168.6250 RX/TX Tone 110.9 163.100			

9. HELICOPTERS (Use Additional Sheets As Necessary)

FAA N# or Designator	TY	MAKE/MODEL	BASE	START	REMARKS	FAA N# or Designator	TY	MAKE/MODEL	BASE	START	REMARKS
612 CK	1	SH3H	WWR	0930	State resource						
135BH	1	S-70	WWR	0930	State resource						

TYPE/FUNCTION	NAME OF PERSONNEL OR CARGO (if applicable) OR INSTRUCTIONS FOR TACTICAL AIRCRAFT	MISSION START	FLY FROM	FLY TO
Water Drops	As Requested	0930	Woodward HB	Fire

SAFETY MESSAGE

A Daily Safety Briefing needs to be conducted for Every Firefighter

HAZARDS AND RISKS IDENTIFIED

Risk vs Benefit

"Fight fire aggressively having provided for safety first."

Lookouts

Communications

Escape Routes

Safety Zones

Fire Behavior

LCES at all times. High winds and spotting. Maintain situational awareness. Have a plan. Attack from the black. Have communication with other resources. Know your escape route as the situation changes.

Severe Weather

Be aware of Incident Severe Weather Plan, Review and follow Thunderstorm safety guidelines in IRPG page 21. Observe 30/30 Rule for lightning safety. While driving be cautious of slippery roads and windblown debris.

Gas, Oil, and Water Wells

Gas, Oil, and Water wells: Numerous sites, exposed and covered pipe lines, and wind mills are located in this portion of Oklahoma. Windsock marked areas may indicate presence of highly toxic gases. Stay upwind of these.

Hazmat Operations

On fires around any structure, equipment, or burned material, watch out for hazardous materials that may be present. If any material is leaking or shows signs of toxic gas or smoke. Assess situation, approach safely, get GPS location, take actions to deny access to area, and notify supervisor. Refer to IRPG pages 34-39 Hazmat Incident Operations.

Power Utilities

Notify all personnel of down electric or damaged power poles, always treat downed wires as energized. Be aware of utility restoration in your work area.

Fire Behavior

LCES at all times. High winds and spotting. Maintain situational awareness. Have a plan. Know your escape route as the situation changes. Attack from the black

Safety Officers: *Larry Holsomback, Buddy Kelley, Mark Sullivan, Randy Miller*

INCIDENT SAFETY ANALYSIS 215a

34 Complex - Friday, April 20, 2018

8. Location	9. Hazard	6. Control or Abatement Action (Engineering, Administrative, PPE, Avoidance, Education, etc)
All	Air Operations	<ul style="list-style-type: none"> ~ Follow " Aviation Watch-Out Situations" on page 44, IRPG. ~ Don't plan on air resources for medical transport or resupply. ~ Refer to page 57, IRPG for directing bucket drops. ~ Ensure positive communication with all air resources.
All	Extreme Fire Behavior	<ul style="list-style-type: none"> ~ Share weather observations with all personnel assigned to division. ~ Establish "Trigger Points" to withdraw. ~ Use "Risk Management" process prior to engaging in suppression actions, refer to page 1, IRPG. ~ Establish and follow LCES at all times
All	Power Utilities	<ul style="list-style-type: none"> ~ Notify all personnel of down electrical lines ~ Always treat downed wires as energized. ~ Identify and avoid high pressure natural gas lines. ~ Be aware of utility restoration in your work area.
IA	Initial Attack	<ul style="list-style-type: none"> ~ Follow Risk Management guidelines in IRPG page 1. ~ Provide through briefing. ~ Coordinate with operations ~ Establish L.C.E.S. before engagement.
All	Driving & Traffic	<ul style="list-style-type: none"> ~ Practice "Defensive Driving" techniques traveling on all roads and city streets. ~ Watch for School Zone ~ Observe posted speed limits. ~ Avoid distractions (eating, cell phones, radio). ~ Ensure that windshields are kept clean of dust and bugs.
All	Hazard Trees	<ul style="list-style-type: none"> ~ Follow "Hazard Tree Safety" guidelines, IRPG page 22. ~ Mitigate hazards by flagging off or removing dangerous snags. ~ In areas that work must be performed use a spotter in mop-up areas with personnel. ~ Don't park vehicles or take breaks in high concentrations of hazard trees. ~ Remember that the hazard zone extends a minimum of 2 1/2 tree heights.
All	Oil & Gas Lines	<ul style="list-style-type: none"> ~ Identify sites, Wind Socks indicate presence of Highly Toxic Gases, Stay up Wind. ~ Do not depend on sense of smell for warning. ~ Park at least 50 feet away from facilities and equipment. ~ Avoid low lying areas during stagnant air conditions. ~ Be Aware of exposed or shallow buried pipes and utilities.
All	Injury & Medical Emergency	<ul style="list-style-type: none"> ~ Assist injured employee appropriate medical care. ~ Use EMT's on Division for initial care. ~ Follow medical protocol as outlined in ICS-206 WF & IRPG Pgs 99-108
All	Communications	<ul style="list-style-type: none"> ~ Maintain communication with aviation resources, and suppression organization. ~ Ensure all know frequency and protocol for contacting resources. ~ Utilize the ICS 205. ~ Utilize human repeaters when working in dead spots.
All	Structure Protection & HAZMAT	<ul style="list-style-type: none"> ~ Review "Wildland Urban Interface" Watch outs, IRPG page 12. ~ Use "Structure Assessment" checklist, IRPG pages 12-16. ~ Follow "HAZMAT Incident Operations" on pages 34-36 in IRPG.
All	Vehicle Operations in Inclement Weather	<ul style="list-style-type: none"> ~ Be alert for potential muddy and slick road surfaces. ~ Avoid parking on soft shoulders along roads. ~ Stay off secondary roads in wet conditions. ~ Increase following distance on slick road surfaces. ~ Send a scout to evaluate roads and work area prior to personnel engagement.
All	Night Operations	<ul style="list-style-type: none"> ~ Maintain high visibility in work area. ~ Avoid all cross country travel with vehicles. ~ Ensure personnel have a personal light. ~ Take breaks away from areas of known hazards.
All	Severe Weather	<ul style="list-style-type: none"> ~ Review and follow Thunderstorm Safety guidelines in IRPG page 21. ~ Observe 30/30 Rule for lightning safety.....page 21, IRPG. ~ Establish "Trigger Points" to withdraw, and ensure all know rally site. ~ Use "Risk Management" process to determine retreat criteria and actions. ~ Carry rain gear and extra food and water if weather limits retreat to ICP.
All	Wildlife & Livestock	<ul style="list-style-type: none"> ~ Watch out for wildlife & livestock inside fire area and along roadways. ~ Clean up all debris and trash during each operational period.

INCIDENT SAFETY ANALYSIS 215a

34 Complex - Wednesday, April 18, 2018

8. Location	9. Hazard	6. Control or Abatement Action (Engineering, Administrative, PPE, Avoidance, Education, etc)
All	Air Operations	<ul style="list-style-type: none"> ~ Follow " Aviation Watch-Out Situations" on page 44, IRPG. ~ Don't plan on air resources for medical transport or resupply. ~ Refer to page 57, IRPG for directing bucket drops. ~ Ensure positive communication with all air resources.
All	Extreme Fire Behavior	<ul style="list-style-type: none"> ~ Share weather observations with all personnel assigned to division. ~ Establish "Trigger Points" to withdraw. ~ Use "Risk Management" process prior to engaging in suppression actions, refer to page 1, IRPG. ~ Establish and follow LCES at all times
All	Power Utilities	<ul style="list-style-type: none"> ~ Notify all personnel of down electrical lines ~ Always treat downed wires as energized. ~ Identify and avoid high pressure natural gas lines. ~ Be aware of utility restoration in your work area.
IA	Initial Attack	<ul style="list-style-type: none"> ~ Follow Risk Management guidelines in IRPG page 1. ~ Provide through briefing. ~ Coordinate with operations ~ Establish L.C.E.S. before engagement.
All	Driving & Traffic	<ul style="list-style-type: none"> ~ Practice "Defensive Driving" techniques traveling on all roads and city streets. ~ Watch for School Zone ~ Observe posted speed limits. ~ Avoid distractions (eating, cell phones, radio). ~ Ensure that windshields are kept clean of dust and bugs.
All	Hazard Trees	<ul style="list-style-type: none"> ~ Follow "Hazard Tree Safety" guidelines, IRPG page 22. ~ Mitigate hazards by flagging off or removing dangerous snags. ~ In areas that work must be performed, post lookouts, or use a spotter in mop-up areas with personnel. ~ Don't park vehicles or take breaks in high concentrations of hazard trees. ~ Establish trigger points for disengagement during high wind events. ~ Remember that the hazard zone extends a minimum of 2 1/2 tree heights.
All	Oil & Gas Lines	<ul style="list-style-type: none"> ~ Identify sites, Wind Socks indicate presence of Highly Toxic Gases, Stay up Wind. ~ Do not depend on sense of smell for warning. ~ Park at least 50 feet away from facilities and equipment. ~ Avoid low lying areas during stagnant air conditions. ~ Be Aware of exposed or shallow buried pipes and utilities.
All	Heavy Equipment Operations	<ul style="list-style-type: none"> ~ Ensure communications are established with operators. ~ Use hand signals if other communications are unavailable. ~ Maintain a 50'-100' exclusion area around equipment and increase it to 1 1/2 times tree height when in timber. ~ Use a spotter when backing. ~ Avoid working below heavy equipment.
All	Communications	<ul style="list-style-type: none"> ~ Maintain communication with aviation resources, and suppression organization. ~ Ensure all know frequency and protocol for contacting resources. ~ Utilize the ICS 205. ~ Utilize human repeaters when working in dead spots.
All	Medical Extraction (Air) >3 hours	<ul style="list-style-type: none"> ~ Approved, Adequate Extraction points are identified, approved known and re-assessed as needed. ~ Ensure Adequate ALS in appropriate locations to respond ~ Pre-identify incident and local emergency air response and capability
All	Medical Extraction (ground >3 hours)	<ul style="list-style-type: none"> ~ Approved Adequate Extraction points are identified and approved, known and reassessed as needed. ~ Ensure adequate ALS is in appropriate locations to respond ~ Consider air extraction if available
All	Night Operations	<ul style="list-style-type: none"> ~ Maintain high visibility in work area. ~ Avoid all cross country travel with vehicles. ~ Ensure personnel have a personal light (headlamp). ~ Watch for signs of fatigue. ~ Take breaks away from areas of known hazard.
All	Structure Protection & HAZMAT	<ul style="list-style-type: none"> ~ Review "Wildland Urban Interface" Watch outs, IRPG page 12. ~ Use "Structure Assessment" checklist, IRPG pages 12-16. ~ Follow "HAZMAT Incident Operations" on pages 34-36 in IRPG.
All	Wildlife & Livestock	<ul style="list-style-type: none"> ~ Watch out for wildlife & livestock inside fire area and along roadways. ~ Clean up all debris and trash during each operational period.

MEDICAL PLAN	1. Incident Name 34 Complex	2. Date Prepared 04/18/18	3. Time Prepared 1300	4. Operational Period Day Shift - Night shift 4/20/18				
5. Incident Medical Aid Station								
Medical Aid Stations		Location			Paramedics Yes No			
Jeff Cummings EMTF	317-730-6653	ICP 108 Temple Houston Dr, Woodward, Ok				X		
Patrick Horan EMPF	303-641-1137	Division A			X			
Wilson Rowell EMPF	334-504-2608	Division G			X			
John Dunzweiler EMPF	606-594-1627	Division J			X			
Matt Jones EMPF	360-824-1360	Division D			X			
6. Transportation								
A. Air Ambulance Services								
Name		Address		Phone	Paramedics Yes No Tail Number			
Air Evac Life Team Bell 206		1620 Santa Fe, Woodward, OK 73801		1-800-247-3822	X N130AE			
(NO wind gust spread exceeding 18mph)		(NO winds over 45mph)						
B. Incident Ambulances								
Name		Location			Paramedics Yes No Call Sign			
Woodward County EMS		ICP 108 Temple Houston Dr, Woodward, OK (0800 - 2100)			X S-43			
Stacie Brunner EMTB		580-216-0874			X			
Marty Graham EMT		580 -216-0081			X			
7. Hospitals								
Name	Address	Travel Time Air Ground		Phone	Helipad Yes No		Burn Center Yes No	
University Medical Center	700 NE 13th, Lincoln Ave, OKC Level 1 Trauma	60 min	120m	405-271-4700	X			X
Integris Baptist Medical Center	3300 NW EXPY OKC Burn Center/Level 3	60 min	120m	405-949-3011	X		X	
St. Mary's Regional	305 S. 5th Enid, OK Trauma/Level 3	30 min	90 min	580-233-6100	X			X
Integris Bass	600 S. Monroe, Enid, OK Cardiac/Level 3	30 min	90 min	580-233-2300	X			X
Alliance Health Woodward	1620 Santa Fe, Woodward, OK General/Level 3	15 min	20 min	877-863-9595	X			X
** Note: Air transport times are from the incident to the hospital only. Does not include flight time to the incident **								
8. Medical Emergency Procedures								
1. Patient or nearest responder will notify Supervisor of the injury. 2. The Supervisor will become the Incident-Within-the Incident Commander (IWI). 3. IWI Commander will notify the nearest medical responder and ICP communications of the Incident 4. IWI Commander will initiate the Nine Line Medical Incident Report attached to the 206 Form								
Prepared by (Medical Unit Leader) Jeff Cummings MEDL				10. Reviewed by (Safety Officer) Larry Holsomback, SOF2				

34 Complex Incident Hazardous Weather Plan

Notification Process

The primary concerns for this plan is preparedness in event of a tornado or hail storm with large hail. Parts of this plan may be used in the aftermath of an earth quake or flood.

IMET (the weather person) will be in contact with OEM (Office of Emergency Management) or the NWS Norman OK. In event that it is determined that hazardous weather is eminent the IMET will notify the IC of areas of potential threat.

In event injury or damage the event will be handles as an incident within an incident using the 9- line process.

Tornadoes/Lighting:

ICP: In event there is a threat to the Incident Command Post, Section Chiefs will move their personnel to designated safe areas (see attached map). These areas are reported to have been designed to withstand some amount of wind. After the threat has passed and damage has occurred, all personnel will assemble in the parking lot between the ICP and the Rodeo Arena. Section Chiefs will roll call to determine the presents of all personnel.

Fire line and vicinity: If the threat is to the personnel on the fire line or vicinity, communications will notify operations and all personnel affected by the threat. Division Supervisors will identify potential safety areas and gathering areas to roll call personnel after the threat has passed.

Hail Storms/Lighting:

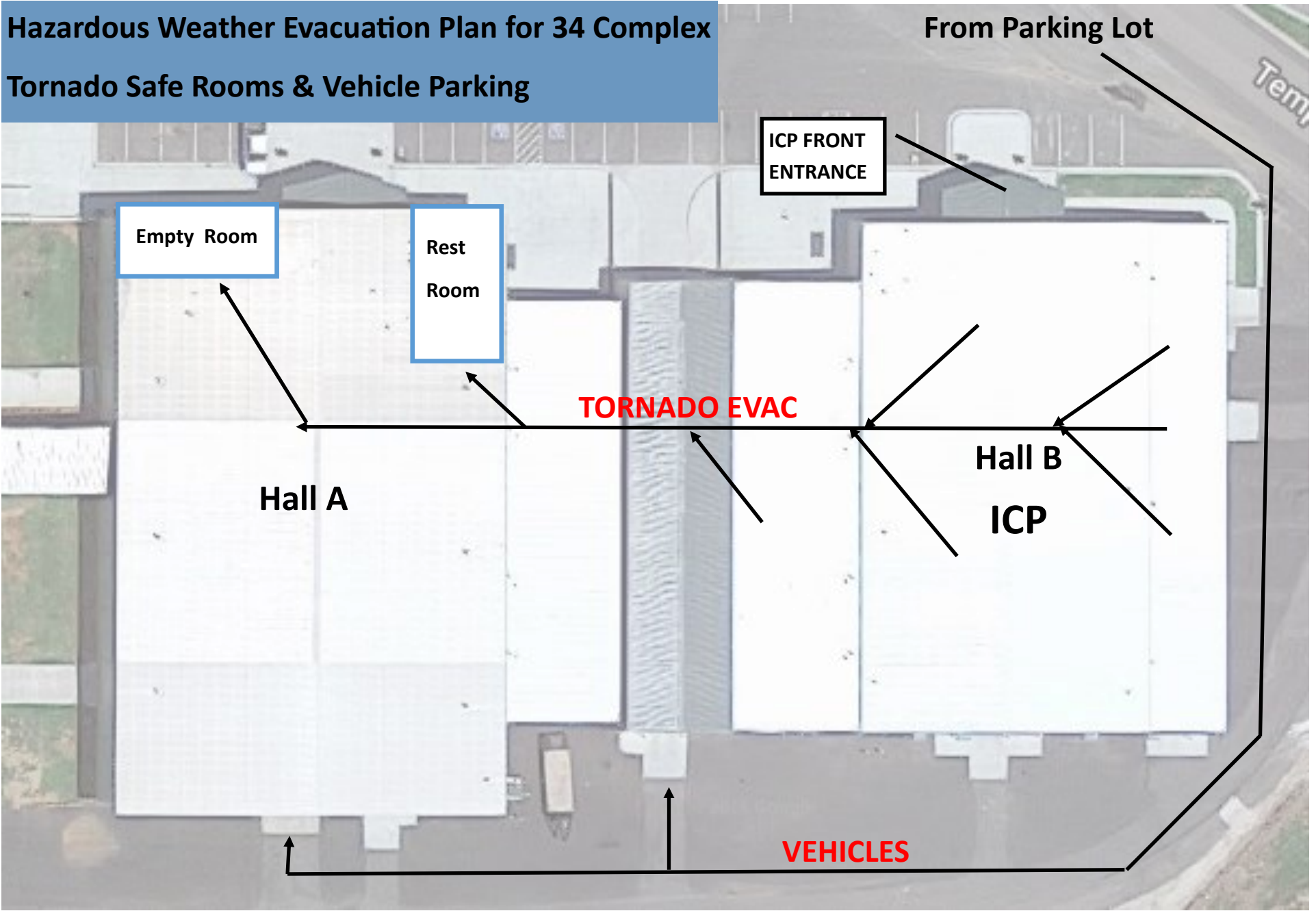
ICP: Notifications will be made of the approaching threat. Personnel are to be advised to stay indoors. Of secondary concern is damage to incident vehicles. Safe areas indoors have been identified for vehicle parking (see attached map). Organization will be directed by logistics for parking.

Fire line and vicinity: Notifications will be made of the approaching threat. Division Supervisors will move personnel to areas of shelter. If feasible locate shelter for incident vehicles.

Medical: In the event of injury the established process of rescue, recovery, and treatment of injury will apply. Supervisors will be notified of injuries or fatalities. The nine line (the process of how to organize a medical emergency or response) will be used to organize the rescue response.

As is mandatory in the wildland fire environment, planning, risk assessment, and execution is the key to safety. Don't wait until the black cloud is over your head to make a plan.

**Hazardous Weather Evacuation Plan for 34 Complex
Tornado Safe Rooms & Vehicle Parking**



INCIDENT RADIO COMMUNICATIONS PLAN			1. Incident Name		2. Date Time Prepared		3. Operational Period Date/Time		
			34 COMPLEX		04/19/2018 1730		04/20/2018 0800-2000		
4. Basic Radio Channel Utilization Mode: W= Wideband, N= Narrowband, D= Digital, M= Mixed									
CHAN NAME	CH #	Function	Frequency	Tone/NAC	Mode	TXID	Assignment	Remarks	
MESA	1	COMMAND	RX: 170.45 TX: 168.1		Analog		ALL DIVISIONS	MESA and BRY SIN LINKED	
BRY SIN	2	COMMAND	RX: 169.375 TX: 164.7125		Analog		G and Southern Area		
FT SUPPLY	3	COMMAND	RX: 159.39 VTAC: 151.28	94.8	Analog		DIVISION J		
VCALL 10	4	TAC	RX: 155.7525 TX: 155.7525	156.7	Analog		A, NIGHT SHIFT		
VTAC 11	5	TAC	RX: 151.1375 TX: 151.1375	156.7	Analog		J, STRUCTURE PROTECTION		
VTAC 13	6	TAC	RX: 158.7375 TX: 158.7375	156.7	Analog		D, INTIAL ATTACK 1		
VTAC 14	7	TAC	RX: 159.4725 TX: 159.4725	156.7	Analog		G, INITIAL ATTACK 2		
A/G PRI	8	A/G	RX: 169.2 TX: 169.2		Analog				
VTAC 12	9	A/G	RX: 154.4525 TX: 154.4525	156.7	Analog		INITIAL ATTACK		
	10		RX: TX:		Analog				
	11		RX: TX:		Analog				
	12		RX: TX:		Analog				
	13		RX: TX:		Analog				
	14		RX: TX:		Analog				
	15		RX: TX:		Analog				
AIR GUARD	16	AIR GUARD	RX: 168.6250 TX: 168.6250	110.9	Analog				
5. Prepared by (Communications Unit)									
TERRY BRINSON COML									

Note: This is not a standard NWCG ICS205 Form

Human Resource Message

The mission of the Gold Team is to safely, effectively and efficiently manage the 34 Complex by maintaining a team of skilled and productive personnel.

During this incident we will strive to successfully complete our mission and achieve our objectives while creating a positive, drug and alcohol free work environment for all assigned incident personnel.

The Gold Team fully supports EEO and will not tolerate sexual harassment or any form of discrimination!

All inappropriate behavior will be dealt with promptly. Disciplinary action and reporting back to an individual's home unit will be initiated as necessary.

Please report any incidents of inappropriate behavior to your supervisor, Danny Bryant or myself immediately.

Steve Parrish, Incident Commander



TRAINING MESSAGE

DON'T FORGET

Taskbooks are to be used every day to identify what needs to be learned & what needs to be evaluated.

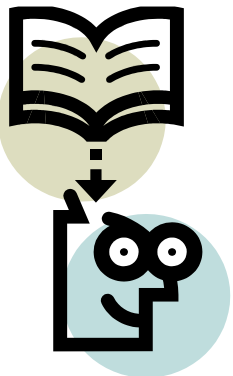
Trainers and Evaluators

Remember to check-in and demob

with the Training Specialist

Diane Bolt, 828-553-8870

(Located next to DEMOB and CHECK-IN)



34 COMPLEX

DEMOB STEPS

Check the board in front of Check-in & DMOB!

Step 1. Have at least 8 hours of rest before you begin travel!

Turn in all supplies and radios. **Contract equipment – clear equipment records with Ground Support.*

**All Trainees should be closed out with the Training Specialist.*

**Clear comp and claims reported through Medical and Finance.*

Step 2. Report to the **DEMOB** unit and pick up your **DEMOBILATION CHECKOUT** form (ICS 221).

Step 3. Go to Units checked on ICS 221 demob form.

Step 4. Turn in all documentation (*performance ratings, unit logs etc.*) to the Documentation Unit.

Step 5. Report to Finance and clear your personnel time and equipment time.

Step 6. Report to Demob Unit to sign off on ICS 221. Tell demob your Estimated Time of Arrival to home unit.

You are now ready to leave. **Drive Safely!!**



34 Complex Fire

How to reach us!

Public Information Phone: 405-730-9107

Email: OK34ComplexFire@gmail.com

Attention Firefighters!! WE NEED PICTURES!

Text your pics to: 252-423-0815 or Email:

OK34ComplexFire@gmail.com

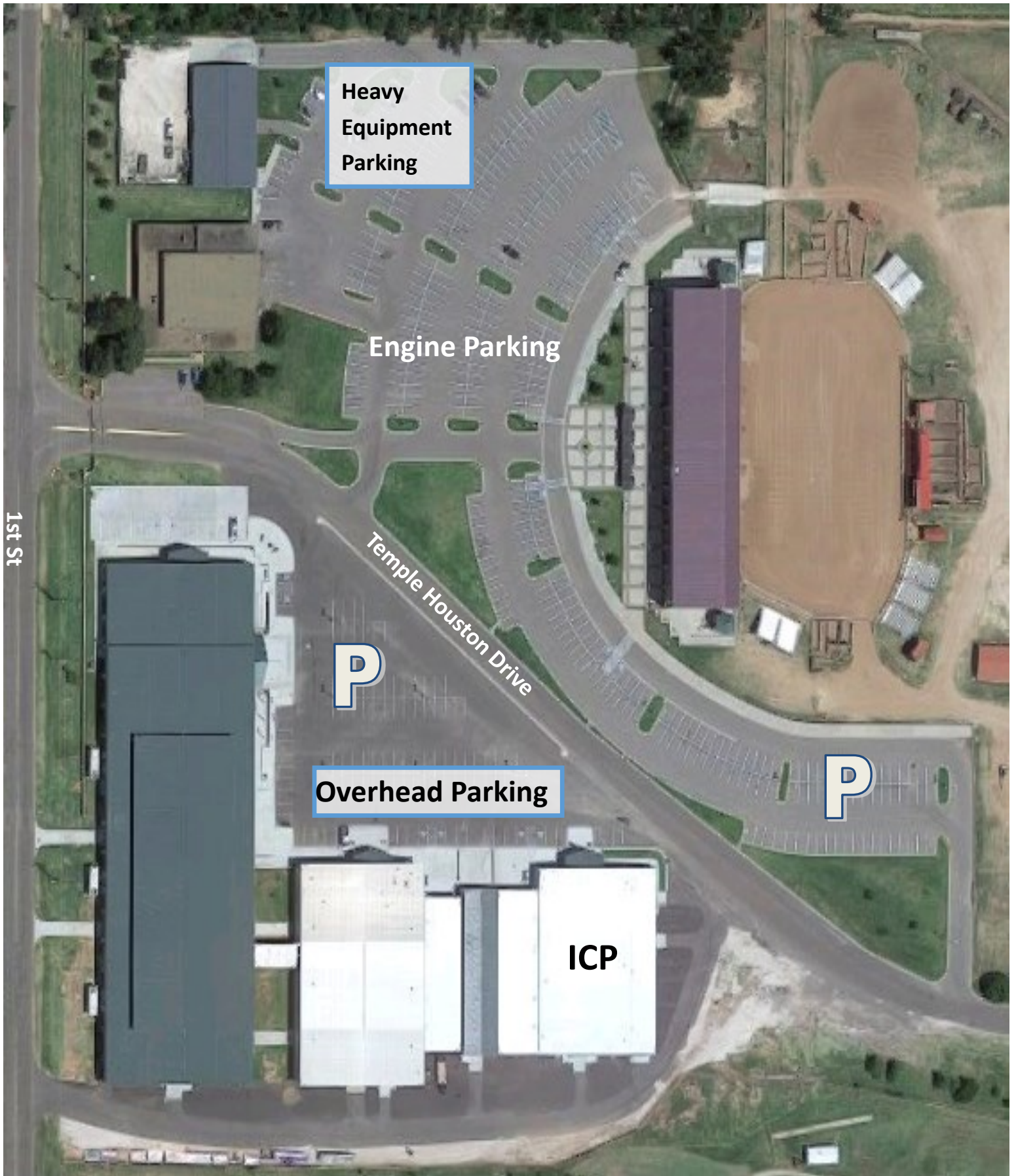
Make sure everyone is wearing PPE, and tell us who you are,
what you're doing, and where!

Facebook: <https://www.facebook.com/OklahomaForestry/>

Twitter: <https://twitter.com/OKForestService>

<https://inciweb.nwcg.gov/incident/5747/>

- We are all **Public Information Officers**.
- We all represent **Oklahoma Forestry Services**.
- We all have a story to tell.
- We encourage you to share your story about what you do on the 34 Complex Fire with people you meet.
- We also encourage you to help us come up with story ideas, especially during the coming rainy days. What have you seen in this community that is a story we can tell?



34 Complex ICP Parking





Main Entrance

Restrooms

**Public
Information**

Ground Support

Air Ops
Safety
Operations

Resources

Briefing

Ordering Supply Facilities Logistics

**Check—In
Demob
Training**

Finance

**Incident
Command**

**Communica-
tions**

Plans

Situation

ITSS

Supply



Medical

34 Complex OK-OKS-180037 IAP Map 04/20/18 Day

Est 62,089 Acres on 4/19/18



1 2 3 4 5 Miles



Datum NAD83
JA 04-19-2018

DIV A

DP-30

DIV D

DP-40

Dip

DP-10

DP-1

DP-20

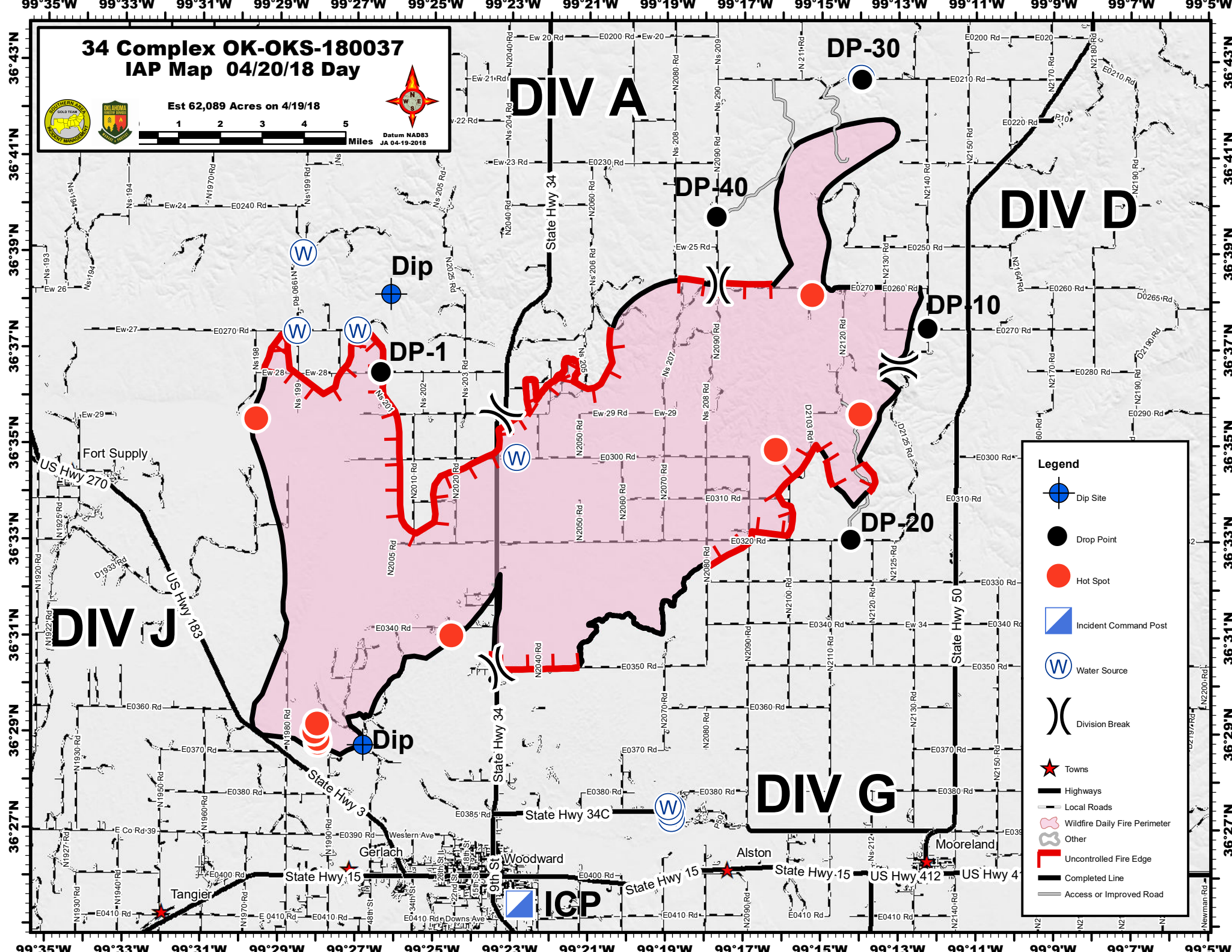
DIV J

DIV G

ICP

Legend

- Dip Site
- Drop Point
- Hot Spot
- Incident Command Post
- Water Source
- Division Break
- Towns
- Highways
- Local Roads
- Wildfire Daily Fire Perimeter
- Other
- Uncontrolled Fire Edge
- Completed Line
- Access or Improved Road



PHONE LIST - 34 Complex

Position	Name	Phone Number	Position	Name	Phone Number
COMMAND			FINANACE		
Incident Commander	Steve Parrish	850-524-1244	Time Unit Leader (t)	Sherise Foster	919-943-7843
Incident Commander	Danny Bryant	601-500-2505	Cost Unit Leader	Tom Steele	770-363-3583
Liaison Officer	Keith Lawrence	803-522-5264	Comp/Claims	Terri McDonald	352-454-5385
Public Information	Bonnie Strawser	252-216-8667	Comp/Claims (t)	Pamela Stamper	276-389-7477
Public Information	John Nichols	501-282-9634	Personel Time Recorder (t)	Gustavo Vallejo	423-284-1041
Public Information	Adam Solt	435-201-0856	PLANNING		
Public Information (t)	Donald Simon	910-975-1895	Chief	Dave Berens	601-319-6823
Safety Officer	Buddy Kelley	850-447-1344	Resource Unit Leader	Melonie Sellers	601-508-8997
Safety Officer	Mark Sullivan	205-531-7183	Resource Unit Leader	Carol O'Bryan	903-263-8704
Safety Officer	Larry Holsomback	706-280-4716	Situation Unit Leader	Bill Coates	770-688-5721
Safety Officer	Randy Miller	571-232-7922	Situation Unit Leader (t)	EJ Bunzendahl	859-559-2397
OPERATIONS			Fire Behavior Analyst	Jamie Atkins	706-955-5986
Planning Ops	Ron Bertsch	706-515-5625	IMET	David Shallenberger	606-481-9238
Planning Ops (t)	Shawn Nagle	662-231-4024	GISS	Chris Evans	928-273-4203
Field Ops	Jeff Schardt	706-280-5498	GISS	Christian Vose	828-342-0512
Field Ops (t)	Dan Martin	540-266-2042	GISS (t)	Joseph Harsh	662-803-1973
Night Operations	Bryan Elam	580-216-9137	GISS (t)	JT Allen	405-593-6226
Division A	Sean Gast	209-770-6265	Demob	Henry Hickerson	540-798-2218
Division A (t)	Joe Pearlman	209-272-2132	Check In	Angela Marcano	706-474-4026
Division D	Greg Salansky	865-414-6461	Check In (t)	Jocelyn Howell	214-934-0138
Division D (t)	Jared Nobles	352-317-6297	Training Specialist	Diane Bolt	828-553-8870
Division G	Matt Johnson	870-415-0185	Compter Tech	John Edwards	850-261-9127
Division J	Tom Crews	252-216-6361	Compter Tech	Nikita Carty	305-878-9907
Structure Protection Group	Randy Jones	352-267-7700	LOGISTICS		
Structure Protection Group (t)	Jason Klawinsky	936-520-8827	Chief	Susan Cornett	903-930-5321
Initial Attack Group #1	Heath Thomas	501-208-7077	Chief (t)	Cameron Crisp	304-642-2035
Initial Attack Group #1 (t)	Mike Brod	706-212-8012	Deputy	Duane Cihlar	218-370-1662
Initial Attack Group #2	Hans Rudolf	541-969-0295	Supply Unit	Ron Zabka	603-630-4916
Night Shift DIVS	Jerry Anderson	940-210-7769	Supply Unit (t)	John Dunlap	580-216-1882
Night Shift DIVS (t)	Dennis Gaston	804-840-5493	Facilities Unit	Gene-Paul Matson	434-665-0444
AIR OPERATIONS			Facilities Unit	Lodging Contact	580-216-8105
Air Operation Branch Director	Bruce Wicks	530-906-2224	Ground Support Unit Leader	Todd Waller	501-337-6308
Air Support Group Supervisor	Pete Kubiak	404-661-4819	Ground Support Unit Leader (t)	Kevin Wagner	479-243-6564
Air Tatical Group Supervisor	Tony Defalco	702-592-9215	Ordering Manager	Nina Donley	205-243-8816
Air Tatical Group Supervisor	Pete Koerber	530-277-9261	Ordering Manager	Durinda Hulett	309-338-1667
Helibase Manager	John Bragg	423-483-2798	Receiving & Distribution	Chris Combs	727-992-0046
FINANACE			Communications	Terry Brinson	386-868-7649
Chief	Wanda Kelley	423-584-1472	Medical Unit Leader	Jeffery Cummings	317-730-6653
Chief (t)	Jennifer Cross	423-715-9025	Security Manager	Tom Neal	618-201-2111
Time Unit Leader	Jean Frick	828-361-5361			

Medical Incident Report- "9 Line"

FOR ALL MEDICAL EMERGENCIES: IDENTIFY ON SCENE INCIDENT COMMANDER BY NAME AND POSITION AND ANNOUNCE "MEDICAL EMERGENCY" TO INITIATE RESPONSE FROM IMT COMMUNICATIONS/DISPATCH.

Use items one through nine to communicate situation to communications/dispatch.

1. CONTACT COMMUNICATIONS/DISPATCH

Ex: "Communications, Div. Alpha. Stand-by for Priority Medical Incident Report." (If life threatening request designated frequency be cleared for emergency traffic.)

2. INCIDENT STATUS: Provide incident summary and command structure.

Nature of Injury/Illness		<i>Describe the injury (Ex: Broken leg with bleeding)</i>
Incident Name		<i>Geographic Name + "Medical" (Ex: Trout Meadow Medical)</i>
Incident Commander		<i>Name of IC</i>
Patient Care		<i>Name of Care Provider (Ex: EMT Smith)</i>

3. INITIAL PATIENT ASSESSMENT: Complete this section for each patient. This is only a brief, initial assessment. Provide additional patient info after completing this 9 Line Report.

Number of Patients:	Male / Female	Age:	Weight:
Conscious? <input type="checkbox"/> YES <input type="checkbox"/> NO = MEDEVAC!			
Breathing? <input type="checkbox"/> YES <input type="checkbox"/> NO = MEDEVAC!			
Mechanism of Injury: <i>What caused the injury?</i>			
Lat/Long (Datum WGS84)			

4. SEVERITY OF EMERGENCY, TRANSPORT PRIORITY

SEVERITY	TRANSPORT PRIORITY
<input type="checkbox"/> URGENT-RED Life threatening injury or illness. <i>Ex: Unconscious, difficulty breathing, bleeding severely, 2° – 3° burns more than 4 palm sizes, heat stroke, disoriented.</i>	Ambulance or MEDEVAC helicopter. Evacuation need is IMMEDIATE.
<input type="checkbox"/> PRIORITY-YELLOW Serious Injury or illness. <i>Ex: Significant trauma, not able to walk, 2° – 3° burns not more than 1-2 palm sizes.</i>	Ambulance or consider air transport if at remote location. Evacuation may be DELAYED.
<input type="checkbox"/> ROUTINE-GREEN Not a life threatening injury or illness. <i>Ex: Sprains, strains, minor heat-related illness.</i>	Non-Emergency. Evacuation considered Routine of Convenience.

5. TRANSPORT PLAN:

Air Transport: (Agency Aircraft Preferred)

<input type="checkbox"/> Helispot	<input type="checkbox"/> Short-haul/Hoist	<input type="checkbox"/> Life Flight	<input type="checkbox"/> Other
Ground Transport:			
<input type="checkbox"/> Self-Extract	<input type="checkbox"/> Carry-Out	<input type="checkbox"/> Ambulance	<input type="checkbox"/> Other

6. ADDITIONAL RESOURCE/EQUIPMENT NEEDS:

<input type="checkbox"/> Paramedic/EMT(s)	<input type="checkbox"/> Crew(s)	<input type="checkbox"/> SKED/Backboard/C-Collar
<input type="checkbox"/> Burn Sheet(s)	<input type="checkbox"/> Oxygen	<input type="checkbox"/> Trauma Bag
<input type="checkbox"/> Medication(s)	<input type="checkbox"/> IV/Fluid(s)	<input type="checkbox"/> Cardiac Monitor/AED
<input type="checkbox"/> Other (i.e. splints, rope rescue, wheeled litter)		

7. COMMUNICATIONS:

Function	Channel Name/Number	Receive (Rx)	Tone/NAC *	Transmit (Tx)	Tone/NAC *
A - G	34 Complex Fire	169.200		169.200	
COMMAND	MESA	170.45		168.1	
AIR-TO-GRND	VTAC 12	154.4525	156.7	154.4525	For Aircraft without A-G

*(NAC for digital radio system)

8. EVACUATION LOCATION:

Lat/Long (Datum WGS84) <i>EX: N 40 42.45' x W 123 03.24'</i>	
Patient's ETA to Evacuation Location:	
Helispot/Extraction Size and Hazards:	

9. CONTINGENCY:

Considerations: <i>If primary options fail, what actions can be implemented in conjunction with primary evacuation method? Be thinking ahead...</i>	REMEMBER: Confirm ETA's of resources ordered Act according to your level of training Be Alert. Keep Calm. Think Clearly. Act Decisively.
--	--