



# Incident Action Plan Unified Command



## Day Operational Period

Saturday

4/21/18

0800-2000



Woodward F.D.

**34 Complex**

OK-OKS-180037

**PNLN1P (1502)**

FF2000000LN1PO Fund 18x

INCIDENT OBJECTIVES	1. Incident Name <b>34 Complex</b>	2. Date Prepared <b>4/20/18</b>	3. Time Prepared <b>1700</b>
4. Operational Period <b>DAY 4/21/18 0800 – 2000</b>			
5. General Control Objectives For The Incident <u>Objectives for the Incident:</u> <ul style="list-style-type: none"> <li>• Ensure protection of human life as a top priority through the use of sound risk management decisions in all actions.</li> <li>• Provide for protection of private property, infrastructure, State, County and Municipal facilities by using sound suppression tactics on all intial and extended attack fires.</li> <li>• Provide training opportunities to Oklahoma Forestry Services personnel to strengthen organizational capabilites and complete training assignments.</li> <li>• Ensure sensitivity to the impacts of suppression activites to private property by fostering and maintaining relationships with appropriate agencies, elected officials, business leaders and members of the public.</li> <li>• Provide accurate information messaging through coordination between the Southern Area Gold Team and Oklahoma Forestry Services Public Information Officers.</li> </ul>			
<u>Control Objectives:</u> <ul style="list-style-type: none"> <li>• Utilize full suppression tactics to keep 34 Complex fire contained within the current footprint by utilizing a combination of ground and aerial resources.</li> <li>• Utilize strategic firing operations to prevent escape or stop forward spread of fire if appropriate and directed to do so by the Operations Section Chief.</li> <li>• Respond to new fires at the request of Oklahoma Forestry Services to support and suppress any new emerging incidents under a Unified Command Structure.</li> </ul>			
6. Weather forecast for Period  The mentioned frontal system will pass through the east on Saturday with some lingering showers and storms in the area for the morning. By the afternoon, much of the precip will exit the area but some scattered showers will linger with less than a 0.10 of rainfall possible. Expect cool conditions with some easterly winds through the day gusting up to 30 mph at times.			
7. General Safety Message  Look up, look down, look all around for hazards, recognize them and mitigate them.			
8. ATTACHMENTS (X IF ATTACHED) <input checked="" type="checkbox"/> Organization List - ICS 203 <input checked="" type="checkbox"/> Medical Plan - ICS 206 <input type="checkbox"/> _____ <input checked="" type="checkbox"/> Division Assignment Lists - ICS 204 <input type="checkbox"/> Incident Map <input type="checkbox"/> _____ <input checked="" type="checkbox"/> Communications Plan - ICS 205 <input type="checkbox"/> Traffic Plan <input type="checkbox"/> _____			
9. Prepared By (Planning Section Chief) <b>/s/ Dave Berens</b>		10. Approved By (Incident Commander) <b>/s/ Danny Bryant</b>	

ORGANIZATION ASSIGNMENT LIST		9.	Operations Section	
1. Incident Name <b>34 Complex</b>		Planning Operations	Ron Bertsch, Shawn Nagle (t)	
		Field Operations	Jeff Schardt, Dan Martin (t)	
2. Date 04/20/18				
3. Time 1700				
4. Operational Period 04/21/18 DAY (0800 – 2000)		<b>a.</b>	<b>Divisions/Groups</b>	
		Division	A	Sean Gast, Joe Pearlman (t)
<b>5. Incident Commander and Staff</b>		Division	D	Greg Salansky, Jared Nobles (t)
Incident Commander	Steve Parrish, Danny Bryant Todd Finley, Tom Marcom	Division	G	Matt Johnson
		Division	J	Tom Crews
Liaison Officer	Keith Lawrence	Group	Structure Protection	Randy Jones, Jason Klawinsky (t)
Safety Officer	Buddy Kelley, Mark Sullivan, Larry Holsomback, Randy Miller	Group	Initial Attack #1	Heath Thomas, Mike Brod (t)
Information Officer	Bonnie Strawser, Donald Simon, John Nichols, Adam Solt	Group	Initial Attack #2	Hans Rudolf
		Group	Initial Attack #3	Jerry Anderson, Dennis Gaston (t) ,
<b>6. Agency Reps</b>				
Woodward F.D. Chief	Todd Finley			
Mooreland F.D. Chief	Tom Marcom			
Fort Supply F.D. Chief	Mike Petty			
Sharon F.D. Chief	Bill Phillips			
Mutual F.D. Chief	Kevin Mitchell	<b>b.</b>	<b>Air Operations Branch</b>	
Oklahoma Forestry Services	Mark Goeller	Air Operation Branch Director	Bruce Wicks	
Oklahoma Emergency Management	Kristal Kuhn	Air Support Group Supervisor	Pete Kubiak	
Woodward Emergency Management	Matt Lehenbauer	Air Tactical Group Supervisor	Tony Defalco	
Mooreland Emergency Management	Jay Krukenberg	Air Tactical Group Supervisor	Joel Lane	
		Helibase Manager	John Bragg	
<b>7. Planning Section</b>				
Chief	Dave Berens			
Resources Unit	Melonie Sellers, Carol O'Bryan			
Situation Unit	Bill Coates, E.J. Bunzendahl (t)			
FBAN	Jamie Atkins	<b>8.</b>	<b>Logistics Section</b>	
IMET	David Shallenberger	Chief	Susan Cornett, Cameron Crisp (t)	
Geo. Info. Spec.	Chris Evans, Christian Vose, Joseph Harsh (t), JT Allen (t)	Deputy	Duane Cihlar	
Demob Unit	Henry Hickerson	Supply Unit	Ron Zabka, John Dunlap (t)	
Status Check-In	Angela Marcano, Jocelyn Howell (t)	Facilities Unit	Gene-Paul Matson, Nelson Gonzalez-Sullow (t)	
Training	Diane Bolt	Base Camp	JaDe Fleck	
ITSS	John Edwards, Nikita Carty (t)	Ground Support	Todd Waller, Kevin Wagner (t)	
Documentation	Jan Grisedale	Equipment Manager	Tristan Jamieson, Jason Mchan	
<b>10. Finance Section</b>		Ordering Manager	Nina Donley, Durinda Hulett	
Chief	Wanda Kelley Jennifer Cross (t)	Receiving & Distrib. Mgr.	Chris Combs	
Time Unit	Jean Frick Sherise Foster (t)	Communications Unit	Terry Brinson	
Cost Unit	Tom Steele	Radio Operator	Daniel Brown, Tyler Befus, Reggie Escarlan	
Comp/Claims	Terri McDonald Pamela Stamper (t)	Medical Unit Leader	Jeffery Cummings	
Personnel Time Recorder	Gustavo Vallejo (t)	Security	Tom Neal	
Procurement	Craig Ericson			
Prepared by (RESL) /s/ Carol O'Bryan / Melonie Sellers				



## INCIDENT Weather Forecast



**FORECAST NO:** 07

**NAME OF FIRE:** 34 Complex

**PREDICTION FOR:** Day/Night **SHIFT**

**UNIT:** Gold Team

**SHIFT DATE:** April 21 2018

**SIGNED:** David Shallenberger

**TIME AND DATE**

**Incident Meteorologist**

**FORECAST ISSUED:** 2000 April 20 2018

---

### **WEATHER DISCUSSION:**

The mentioned frontal system will pass through the east on Saturday with some lingering showers and storms in the area for the morning. By the afternoon, much of the precip will exit the area but some scattered showers will linger with less than a 0.10 of rainfall possible. Expect cool conditions with some easterly winds through the day gusting up to 30 mph at times.

---

### **WEATHER FORECAST SATURDAY:**

**WEATHER:** Mostly cloudy. A 90% chance of showers and thunderstorms possible early. Precipitation amounts between a 0.25 - 0.50 from early Saturday morning through the day.

**TEMPERATURES:** 60-65

**HUMIDITY:** 55% to 60%

**20 FT WINDS:** E 5 to 15 mph early, then increasing with gusts to 30 mph in the afternoon

**RFTI INDEX:** 0 Nil

**HAINES INDEX:** 3

**DISPERSION:** Poor in the morning around 20, increasing to fair in the afternoon around 40

---

### **WEATHER FORECAST SATURDAY NIGHT:**

**WEATHER:** Mostly Cloudy with a 30% chance of showers. Precipitation amounts up to a 0.10.

**TEMPERATURES:** 35-40

**HUMIDITY:** 95% to 100%

**20 FT WINDS:** NE 5 to 15 mph

**RFTI INDEX:** 0 Nil

**HAINES INDEX:** 2

**DISPERSION:** Poor around 20

---

### **OUTLOOK FOR SUNDAY:**

As the system exits the area, a few showers will still be possible on Sunday but mainly in the morning. Expect mainly cooler conditions with higher minimum relative humidity values. Temperatures will be cooler as well with northerly winds in place as high pressure will begin to enter the region.

---

### **EXTENDED FORECAST MONDAY AND TUESDAY:**

High pressure will move into place for the day on Monday. With this, expect mainly clear skies with light northeast winds in place. A weak disturbance will pass through on Tuesday with a slight chance of showers.

## FIRE BEHAVIOR FORECAST

<b>FORECAST NUMBER:</b> 6	<b>TYPE OF FIRE:</b> Wildland
<b>FIRE NAME:</b> 34 Complex	<b>OPERATIONAL PERIOD:</b> Day Shift Saturday April 21st, 2018
<b>DATE ISSUED:</b> April 20 <sup>th</sup> , 2018	<b>TIME ISSUED:</b> 2000
<b>UNIT:</b> OK - OKS-180037	<b>SIGNED:</b> <i>James Atkins</i> James Atkins, FBAN

### INPUTS

#### WEATHER SUMMARY:

See attached forecast

**Max Temp:** 60-65 **Min Temp:** 40-45

**Min RH:** 55-60% **Max RH:** 95-100% (Excellent)

**Winds (20'):** E 5-15 Gusting 25-30 in the pm

**LAL:** 3 **Haines:** 3 **CWR:** 90%

### OUTPUTS

#### FIRE BEHAVIOR

##### GENERAL

Depending on the amount of precipitation received keep in mind that 1 hour time lag fuels dry very quickly when exposed to wind and sun. A new start or a breakout in the grass fuel models adjacent to the 34 Complex or the area of IA responsibility may display problematic fire behavior. Areas with remaining heat may continue to smolder especially in heavy fuels that are sheltered under canopy.

**Red Flag Threat Index for today:** 0 "Nil"

**POI:** 0-30%

**Rate of Spread:** <1ch/hr (damp/wet) – 1 mph wind driven/high RH

**Flame Lengths:** <1ft (damp/wet) – 10ft wind driven/high RH

##### SPECIFIC:

**34 Complex:** Smoldering and creeping may continue in heavy dead and down fuels especially underneath canopy.

**Initial Attack:** IA fires will remain a valid concern throughout the day shift. Expect a light to moderate resistance to control on any new IA fires, but be mindful of the fuel loading, topography and wind speeds as these factors can increase fire behavior exponentially.

#### AIR OPERATIONS:

### SAFETY

Standard Firefighting Order # 2 is key today: **Know what you fire is doing at all times.** Although this fire has exhibited little activity in recent days, it is not completely out. Hot stump holes, creeping duff fire, and fire-weakened snags and trees remain.

## z Division/Group Assignment List (ICS 204 WF)

<b>1. Incident Name:</b>				<b>3.</b>				
<b>34 Complex</b>				<b>Branch:</b>		<b>Division/Group:</b>		
<b>2. Operational Period: 0800 - 2000</b>				<b>A</b>				
Date/Time From: 04/21/18 0800		Date/Time To: 04/21/18 2000						
<b>4. Operations Personnel</b>								
<b>AIR ATTACK SUPERVISOR</b>		Tony Defalco 4/28 Joel Lane		<b>FIELD OPERATIONS</b>		Jeff Schardt 4/28 Dan Martin (t) 4/28		
<b>DIVISION/GROUP SUPERVISOR</b>		Sean Gast 4/29 Joe Pearlman (t) 4/28		<b>PLANNING OPERATIONS</b>		Ron Bertsh 4/28 Shawn Nagle (t) 4/26		
<b>5. Resources Assigned this Period</b>								
Strike Team / Task Force / Resource Designator			LWD	Leader		Number Persons	Drop Off PT./Time	Pick Up PT./Time
ENG T3 Utah Fire 16 E-70			4/30	Krista Spraycar		3	0800	2000
SOF2			4/29	Randy Miller		1	0800	2000
EMPF			4/29	Patrick Horan		1	0800	2000
<b>6. Control Operations/Work Assignments:</b>								
<b>Task:</b>								
<ul style="list-style-type: none"> <li>• Mop up and cold trail 1 chain in from perimeter of fire.</li> </ul>								
<b>Purpose:</b>								
<ul style="list-style-type: none"> <li>• Keep fire within current perimeter</li> </ul>								
<b>End State:</b>								
<ul style="list-style-type: none"> <li>• No lateral spread of fire, one chain mop up completed, and has not grown in size for one operational period.</li> </ul>								
<b>7. Special Instructions:</b>								
<ul style="list-style-type: none"> <li>• Establish and maintain LCES on 34 Complex and emerging fires.</li> <li>• Document any damage or burned structures / infrastructure with a lat/long and photo</li> <li>• Stay clear and capture any lat/long of any hazmat situation and notify immediate supervisor</li> </ul>								
<b>8. Division/Group Communication Summary</b>								
Function	Channel	Channel Name	RX Frequency N/W	RX Tone/NAC	TX Frequency N/W	TX Tone/NAC	Mode	
COMMAND	1	MESA	170.45		168.1		Analog	
TACTICAL	4	VCALL10	155.7525		155.7525	156.7	Analog	
AIR TO GROUND	8	A/G Primary	169.2000		169.2000		Analog	
<b>9. Prepared By (Resource Unit Leader)</b>			<b>Approved By (Planning Section Chief)</b>			<b>Date</b>	<b>Time</b>	
Carol O'Bryan / Melonie Sellers			Dave Berens			04/20/18	2000	

## Division/Group Assignment List (ICS 204 WF)

<b>1. Incident Name:</b>				<b>3.</b>			
34 Complex				<b>Branch:</b>		<b>Division/Group:</b>	
<b>2. Operational Period: 0800-2000</b>				<b>D</b>			
Date/Time From: 04/21/18 0800		Date/Time To: 04/21/18 2000					
<b>4. Operations Personnel</b>							
<b>AIR ATTACK SUPERVISOR</b>		Tony Defalco 4/28 Joel Lane		<b>FIELD OPERATIONS</b>		Jeff Schardt 4/28 Dan Martin (t) 4/28	
<b>DIVISION/GROUP SUPERVISOR</b>		Greg Salansky 4/28 Jared Nobles (t) 4/28		<b>PLANNING OPERATIONS</b>		Ron Bertsh 4/28 Shawn Nagle (t) 4/26	
<b>5. Resources Assigned this Period</b>							
Strike Team / Task Force / Resource Designator		LWD	Leader	Number Persons	Drop Off PT./Time	Pick Up PT./Time	
TFLD	O-28	4/28	Max Twombly	1	0800	2000	
ENG T4	Utah Fire 14 E-15	4/30	Israel Justice	3	0800	2000	
SOF2		4/28	Mark Sullivan	1	0800	2000	
EMPF		4/29	Matt Jones	1	0800	2000	
<b>6. Control Operations/Work Assignments:</b>							
<b>Task:</b>							
<ul style="list-style-type: none"> <li>• Mop up and cold trail 1 chain in from perimeter of fire.</li> </ul>							
<b>Purpose:</b>							
<ul style="list-style-type: none"> <li>• Keep fire within current perimeter</li> </ul>							
<b>End State:</b>							
<ul style="list-style-type: none"> <li>• No lateral spread of fire, one chain mop up completed, and has not grown in size for one operational period.</li> </ul>							
<b>7. Special Instructions:</b>							
<ul style="list-style-type: none"> <li>• Establish and maintain LCES on 34 Complex and emerging fires.</li> <li>• Document any damage or burned structures / infrastructure with a lat/long and photo</li> <li>• Stay clear and capture any lat/long of any hazmat situation and notify immediate supervisor</li> </ul>							
<b>8. Division/Group Communication Summary</b>							
Function	Channel	Channel Name	RX Frequency N/W	RX Tone/NAC	TX Frequency N/W	TX Tone/NAC	Mode
COMMAND	1	MESA	170.45		168.1		Analog
TACTICAL	6	VTAC 13	158.7375		158.7375	156.7	Analog
AIR TO GROUND	8	A/G Primary	169.2000		169.2000		Analog
<b>9. Prepared By (Resource Unit Leader)</b>			<b>Approved By (Planning Section Chief)</b>			<b>Date</b>	<b>Time</b>
Carol O'Bryan / Melonie Sellers			Dave Berens			04/20/18	2000

## Division/Group Assignment List (ICS 204 WF)

<b>1. Incident Name:</b>				<b>3.</b>			
<h1>34 Complex</h1>				<b>Branch:</b>		<b>Division/Group:</b>  <h1 style="font-size: 2em;">G</h1>	
<b>2. Operational Period: 0800 - 2000</b>							
Date/Time From: 04/21/18 0800		Date/Time To: 04/21/18 2000					
<b>4. Operations Personnel</b>							
<b>AIR ATTACK SUPERVISOR</b>		Tony Defalco Joel Lane		4/28		<b>FIELD OPERATIONS</b>	
						Jeff Schardt 4/28 Dan Martin (t) 4/28	
<b>DIVISION/GROUP SUPERVISOR</b>		Matt Johnson		4/28		<b>PLANNING OPERATIONS</b>	
						Ron Bertsh 4/28 Shawn Nagle (t) 4/26	
<b>5. Resources Assigned this Period</b>							
Strike Team / Task Force / Resource Designator			LWD	Leader	Number Persons	Drop Off PT./Time	Pick Up PT./Time
TFLD O-27			4/28	James Wettstaed	1	0800	2000
HC2IA FL ST #1 Squad 1 C-4			5/03	Jason Foshee	10	0800	2000
ENG T4 Dragon Fighters E-14			4/30	Matt Helgeson	3	0800	2000
EMPF			4/29	Eddy Rowell	1	0800	2000
SOF2			4/29	Mark Sullivan	1	0800	2000
<b>6. Control Operations/Work Assignments:</b>							
<b>Task:</b>							
<ul style="list-style-type: none"> <li>Mop up and cold trail 1 chain in from perimeter of fire.</li> </ul>							
<b>Purpose:</b>							
<ul style="list-style-type: none"> <li>Keep fire within current perimeter</li> </ul>							
<b>End State:</b>							
<ul style="list-style-type: none"> <li>No lateral spread of fire, one chain mop up completed, and has not grown in size for one operational period.</li> </ul>							
<b>7. Special Instructions:</b>							
<ul style="list-style-type: none"> <li>Establish and maintain LCES on 34 Complex and emerging fires.</li> <li>Document any damage or burned structures / infrastructure with a lat/long and photo</li> <li>Stay clear and capture any lat/long of any hazmat situation and notify immediate supervisor</li> </ul>							
<b>8. Division/Group Communication Summary</b>							
Function	Channel	Channel Name	RX Frequency N/W	RX Tone/NAC	TX Frequency N/W	TX Tone/NAC	Mode
COMMAND	1	MESA	170.45		168.1		Analog
COMMAND	2	BRY SIN	169.375		164.7125		Analog
TACTICAL	7	VTAC 14	159.4725		159.4725	156.7	Analog
AIR TO GROUND	8	A/G Primary	169.2000		169.2000		Analog
<b>9. Prepared By (Resource Unit Leader)</b>			<b>Approved By (Planning Section Chief)</b>			<b>Date</b>	<b>Time</b>
Carol O'Bryan / Melonie Sellers			Dave Berens			04/20/18	2000



## Division/Group Assignment List (ICS 204 WF)

<b>1. Incident Name:</b>			<b>3.</b>				
<h1>34 Complex</h1>			<b>Branch:</b>		<b>Division/Group:</b>  <h1 style="text-align: center;">J</h1>		
<b>2. Operational Period: 0800 - 2000</b>							
Date/Time From: 04/21/18 0800		Date/Time To: 04/21/18 2000					
<b>4. Operations Personnel</b>							
<b>AIR ATTACK SUPERVISOR</b>		Tony Defalco 4/28 Joel Lane		<b>FIELD OPERATIONS</b>		Jeff Schardt 4/28 Dan Martin (t) 4/28	
<b>DIVISION/GROUP SUPERVISOR</b>		Tom Crews 4/28		<b>PLANNING OPERATIONS</b>		Ron Bertsh 4/28 Shawn Nagle (t) 4/26	
<b>5. Resources Assigned this Period</b>							
Strike Team / Task Force / Resource Designator		LWD	Leader	Number Persons	Drop Off PT./Time	Pick Up PT./Time	
TFLD O-30		4/27	Tony Collins	1	0800	2000	
HC2IA FL ST #1 Squad 2		C-4 5/03	Randy Tharp	10	0800	2000	
ENG T6 Griffith		E-4 4/30	William Griffith	3	0800	2000	
SOF2		4/30	Randy Miller	1	0800	2000	
<b>6. Control Operations/Work Assignments:</b>							
<b>Task:</b>							
<ul style="list-style-type: none"> <li>Mop up and cold trail 1 chain in from perimeter of fire.</li> </ul>							
<b>Purpose:</b>							
<ul style="list-style-type: none"> <li>Keep fire within current perimeter</li> </ul>							
<b>End State:</b>							
<ul style="list-style-type: none"> <li>No lateral spread of fire, one chain mop up completed, and has not grown in size for one operational period.</li> </ul>							
<b>7. Special Instructions:</b>							
<ul style="list-style-type: none"> <li>Establish and maintain LCES on 34 Complex and emerging fires.</li> <li>Document any damage or burned structures / infrastructure with a lat/long and photo</li> <li>Stay clear and capture any lat/long of any hazmat situation and notify immediate supervisor</li> </ul>							
<b>8. Division/Group Communication Summary</b>							
Function	Channel	Channel Name	RX Frequency N/W	RX Tone/NAC	TX Frequency N/W	TX Tone/NAC	Mode
COMMAND	1	MESA	170.45		168.1		Analog
COMMAND	3	FT SUPPLY	159.39		151.28	94.8	Analog
TACTICAL	5	VTAC 11	151.1375		151.1375	156.7	Analog
AIR TO GROUND	8	A/G Primary	169.2000		169.2000		Analog
<b>9. Prepared By (Resource Unit Leader)</b> Carol O'Bryan / Melonie Sellers			<b>Approved By (Planning Section Chief)</b> Dave Berens		<b>Date</b> 04/20/18		<b>Time</b> 2000

### Division/Group Assignment List (ICS 204 WF)

<b>1. Incident Name:</b>			<b>3.</b>				
34 Complex			<b>Branch:</b>		<b>Division/Group:</b>		
<b>2. Operational Period: 0800 - 2000</b>					Structure Protection		
Date/Time From: 04/21/18 0800		Date/Time To: 04/21/18 2000					
<b>4. Operations Personnel</b>							
AIR ATTACK SUPERVISOR		Tony Delfalco 4/28 Joel Lane		FIELD OPERATIONS		Jeff Schardt 4/28 Dan Martin (t) 4/28	
DIVISION/GROUP SUPERVISOR		Randy Jones 4/28 Jason Klawinsky (t) 4/28		PLANNING OPERATIONS		Ron Bertsh 4/28 Shawn Nagle (t) 4/26	
<b>5. Resources Assigned this Period</b>							
Strike Team / Task Force / Resource Designator	LWD	Leader	Number Persons	Drop Off PT./Time	Pick Up PT./Time		
<b>6. Control Operations/Work Assignments:</b>							
<b>Task:</b>							
<ul style="list-style-type: none"> <li>Assess and plan for structure protection.</li> </ul>							
<b>Purpose:</b>							
<ul style="list-style-type: none"> <li>Identify and capture tactical measures to mitigate any threats to infrastructure.</li> </ul>							
<b>End State:</b>							
<ul style="list-style-type: none"> <li>Contingency plan for structure protection.</li> </ul>							
<b>7. Special Instructions:</b>							
<ul style="list-style-type: none"> <li>Establish and maintain LCES on 34 Complex and emerging fires.</li> <li>Document any damage or burned structures / infrastructure with a lat/long and photo</li> <li>Stay clear and capture any lat/long of any hazmat situation and notify immediate supervisor</li> </ul>							
<b>8. Division/Group Communication Summary</b>							
Function	Channel	Channel Name	RX Frequency N/W	RX Tone/NAC	TX Frequency N/W	TX Tone/NAC	Mode
COMMAND	1	MESA	170.45		168.1		Analog
TACTICAL	5	VTAC 11	151.1375		151.1375	156.7	Analog
AIR TO GROUND	8	A/G Primary	169.2000		169.2000		Analog
<b>9. Prepared By (Resource Unit Leader)</b>			<b>Approved By (Planning Section Chief)</b>			<b>Date</b>	<b>Time</b>
Carol O'Bryan / Melonie Sellers			Dave Berens			04/20/18	2000

## Division/Group Assignment List (ICS 204 WF)

<b>1. Incident Name:</b>			<b>3.</b>				
<b>34 Complex</b>			<b>Branch:</b>		<b>Division/Group:</b>		
<b>2. Operational Period:</b> <b>0800 - 2000</b>					<b>Initial Attack #1</b>		
Date/Time From: 04/21/18    0800		Date/Time To: 04/21/18    2000					
<b>4. Operations Personnel</b>							
<b>AIR ATTACK SUPERVISOR</b>		Tony Delfalco Joel Lane		4/28		<b>FIELD OPERATIONS</b>	
						Jeff Schardt                      4/28 Dan Martin (t)                      4/28	
<b>DIVISION/GROUP SUPERVISOR</b>		Heath Thomas Mike Brod (t)		4/28 4/29		<b>PLANNING OPERATIONS</b>	
						Ron Bertsh                              4/28 Shawn Nagle (t)                      4/26	
<b>5. Resources Assigned this Period</b>							
Strike Team / Task Force / Resource Designator		LWD	Leader		Number Persons	Drop Off PT./Time	Pick Up PT./Time
TFLD                      O-54		5/03	James Yacomb		1	0800	2000
ENG T4 BLM                      E-12		4/30	Laif Morrison		3	0800	2000
ENG T4 Heat Seeker 18                      E-13		4/30	Dustin Johnson		3	0800	2000
ENG T4 Madison                      E-58		5/03	Ellis Johnston		3	0800	2000
HEQB                      O-58		5/03	Darren Cluff		1	0800	2000
HEQB (t)                      O-60		5/03	Austin Sewell		1	0800	2000
DOZ T2 Cornelius Farms                      E-28		5/03	Alex Cornelius		1	0800	2000
DOZ T2 Rock ,Snow & Fire                      E-26		5/05	Anthony Clement		2	0800	2000
WT T2 Tipton & Young                      E-51		5/03	Tony Tipton		1	0800	0800
EMPF		4/29	John Dunzweiler		1	0800	2000
SOF2		4/29	Buddy Kelley		1	0800	2000
<b>6. Control Operations/Work Assignments:</b>							
<b>Task:</b>							
<ul style="list-style-type: none"> <li>• Provide for assistance to requests for initial attack by Oklahoma Forestry Services and cooperators.</li> </ul>							
<b>Purpose:</b>							
<ul style="list-style-type: none"> <li>• To support local IA capabilities.</li> </ul>							
<b>End State:</b>							
<ul style="list-style-type: none"> <li>• IA fires after establishing LCES and command structures and contain fire where and only when safe to do so.</li> </ul>							
<b>7. Special Instructions:</b>							
<ul style="list-style-type: none"> <li>• Establish and maintain LCES on 34 Complex and emerging fires.</li> <li>• Stay clear and capture any lat/long of any hazmat situation and notify immediate supervisor.</li> </ul>							
<b>8. Division/Group Communication Summary</b>							
Function	Channel	Channel Name	RX Frequency N/W	RX Tone/NAC	TX Frequency N/W	TX Tone/NAC	Mode
COMMAND	1	MESA	170.45		168.1		Analog
TACTICAL	6	VTAC 13	158.7375		158.7375	156.7	Analog
AIR TO GROUND	9	VTAC 12	154.4525		154.4525	156.7	Analog
<b>9. Prepared By (Resource Unit Leader)</b>			<b>Approved By (Planning Section Chief)</b>			<b>Date</b>	<b>Time</b>
Carol O'Bryan / Melonie Sellers			Dave Berens			04/20/18	2000

### Division/Group Assignment List (ICS 204 WF)

<b>1. Incident Name:</b>				<b>3.</b>			
<b>34 Complex</b>				<b>Branch:</b>		<b>Division/Group:</b>	
<b>2. Operational Period: 0800 - 2000</b>						<b>Initial Attack #2</b>	
Date/Time From: 04/21/18 0800		Date/Time To: 04/21/18 2000					
<b>4. Operations Personnel</b>							
<b>AIR ATTACK SUPERVISOR</b>		Tony Delfalco 4/28 Joel Lane		<b>FIELD OPERATIONS</b>		Jeff Schardt 4/28 Dan Martin (t) 4/28	
<b>DIVISION/GROUP SUPERVISOR</b>		Hans Rudolf 5/03		<b>PLANNING OPERATIONS</b>		Ron Bertsh 4/28 Shawn Nagle (t) 4/26	
<b>5. Resources Assigned this Period</b>							
Strike Team / Task Force / Resource Designator		LWD	Leader	Number Persons	Drop Off PT./Time	Pick Up PT./Time	
ENG T3 Tonto E-54		5/04	Adam Giordano	5	0800	2000	
ENG T3 Pinedale E-55		5/04	Jason Carven	4	0800	2000	
ENG T3 American Wildfire E-56		5/04	Jeff Stanovich	3	0800	2000	
HEQB O-61		5/03	James Johnston	1	0800	2000	
HEQB (t) O-59		5/03	Gabriel Cluff	1	0800	2000	
DZ T2 E-25		5/03	Penderland	3	0800	2000	
<b>6. Control Operations/Work Assignments:</b>							
<b>Task:</b>							
<ul style="list-style-type: none"> <li>• Provide for assistance to requests for initial attack by Oklahoma Forestry Services and cooperators.</li> </ul>							
<b>Purpose:</b>							
<ul style="list-style-type: none"> <li>• To support local IA capabilities.</li> </ul>							
<b>End State:</b>							
<ul style="list-style-type: none"> <li>• IA fires after establishing LCES and command structures and contain fire where and only when safe to do so.</li> </ul>							
<b>7. Special Instructions:</b>							
<ul style="list-style-type: none"> <li>• Establish and maintain LCES on 34 Complex and emerging fires.</li> <li>• Stay clear and capture any lat/long of any hazmat situation and notify immediate supervisor</li> </ul>							
<b>8. Division/Group Communication Summary</b>							
Function	Channel	Channel Name	RX Frequency N/W	RX Tone/NAC	TX Frequency N/W	TX Tone/NAC	Mode
COMMAND	1	MESA	170.45		168.1		Analog
TACTICAL	7	VTAC 14	159.4725		159.4725	156.7	Analog
AIR TO GROUND	9	VTAC 12	154.4525		154.4525	156.7	Analog
<b>9. Prepared By (Resource Unit Leader)</b>			<b>Approved By (Planning Section Chief)</b>			<b>Date</b>	<b>Time</b>
Carol O'Bryan / Melonie Sellers			Dave Berens			04/20/18	2000

### Division/Group Assignment List (ICS 204 WF)

<b>1. Incident Name:</b>			<b>3.</b>					
<h1>34 Complex</h1>			<b>Branch:</b>		<b>Division/Group:</b>			
<b>2. Operational Period: 2000 - 0800</b>			<h1>Initial Attack #3</h1>					
Date/Time From: 04/21/18 0800		Date/Time To: 04/21/18 2000						
<b>4. Operations Personnel</b>								
<b>AIR ATTACK SUPERVISOR</b>		Tony Delfalco Joel Lane		4/28		<b>NIGHT OPERATIONS</b>		
<b>DIVISION/GROUP SUPERVISOR</b>		Jerry Anderson Dennis Gaston (t)		4/28 4/29		<b>PLANNING OPERATIONS</b>		
						Ron Bertsh Shawn Nagle (t)		
						4/28 4/26		
<b>5. Resources Assigned this Period</b>								
Strike Team / Task Force / Resource Designator			LWD	Leader		Number Persons	Drop Off PT./Time	Pick Up PT./Time
ENG T3	Truckee Meadows	E-71	4/29	Ryan Rizzuto		4	0800	2000
ENG T6	Scholl Fire & Fuels	E-10	4/29	Eric Pritchard		3	0800	2000
ENG T4	Heat Seeker 17	E-59	5/03	Adrian Paz		3	0800	2000
<b>6. Control Operations/Work Assignments:</b>								
<b>Task:</b>								
<ul style="list-style-type: none"> <li>Provide for assistance to requests for initial attack by Oklahoma Forestry Services and cooperators.</li> </ul>								
<b>Purpose:</b>								
<ul style="list-style-type: none"> <li>To support local IA capabilities.</li> </ul>								
<b>End State:</b>								
<ul style="list-style-type: none"> <li>IA fires after establishing LCES and command structures and contain fire where and only when safe to do so.</li> </ul>								
<b>7. Special Instructions:</b>								
<ul style="list-style-type: none"> <li>Establish and maintain LCES on 34 Complex and emerging fires.</li> <li>Stay clear and capture any lat/long of any hazmat situation and notify immediate supervisor.</li> </ul>								
<b>8. Division/Group Communication Summary</b>								
Function	Channel	Channel Name	RX Frequency N/W	RX Tone/NAC	TX Frequency N/W	TX Tone/NAC	Mode	
COMMAND	1	MESA	170.45		168.1		Analog	
TACTICAL	4	VCALL 10	155.7525		155.7525	156.7	Analog	
AIR TO GROUND	9	VTAC 12	154.4525		154.4525	156.7	Analog	
<b>9. Prepared By (Resource Unit Leader)</b>			<b>Approved By (Planning Section Chief)</b>			<b>Date</b>	<b>Time</b>	
Carol O'Bryan / Melonie Sellers			Dave Berens			04/20/18	2000	

## Division/Group Assignment List (ICS 204 WF)

<b>1. Incident Name:</b>			<b>3.</b>				
<h1>34 Complex</h1>			<b>Branch:</b>		<b>Division/Group:</b> <h1>Rhea Fire</h1>		
<b>2. Operational Period: 0800 - 2000</b>							
Date/Time From: 04/21/18 0800		Date/Time To: 04/21/18 2000					
<b>4. Operations Personnel</b>							
<b>AIR ATTACK SUPERVISOR</b>					<b>FIELD OPERATIONS</b>		
<b>DIVISION/GROUP SUPERVISOR</b>					<b>PLANNING OPERATIONS</b>		
<b>5. Resources Assigned this Period</b>							
Strike Team / Task Force / Resource Designator		LWD	Leader		Number Persons	Drop Off PT./Time	Pick Up PT./Time
TFLD	O-57	5/01	Josh Hernandez		1	0800	2000
HC2IA Pat-Rick	C-6	5/03	Randy Teel		20	0800	2000
ENG T3 Lefthand	E-17	4/28	Melissa Friess		3	0800	2000
ENG T6 Pat-Rick B56463	E-5	4/29	Benjamin Castle		2	0800	2000
ENG T6 Pat-Rick C44474	E-8	4/29	Charles Perkins		2	0800	2000
ENG T6 Don Crane	E-3	4/29	Don Crane		2	0800	2000
ENG T6 MSN XR	E-7	4/30	Waymon Fondren		3	0800	2000
ENG T6 Attack One	E-9	4/30	David Knowles		3	0800	2000
<b>6. Control Operations/Work Assignments:</b>							
<b>Task:</b>							
<ul style="list-style-type: none"> <li>Provide resources to the Rhea Fire</li> </ul>							
<b>Purpose:</b>							
<ul style="list-style-type: none"> <li>To implement collaborative sharing of resources</li> </ul>							
<b>End State:</b>							
<ul style="list-style-type: none"> <li>Resources will be utilized for wildland fire operations at the Rhea Fire.</li> </ul>							
<b>7. Special Instructions:</b>							
<ul style="list-style-type: none"> <li>Travel to Taloga for briefing at 0800 to receive operational assignments for 4/19 – 4/21/18</li> <li>See Rhea Fire Communications Plan for radio frequencies.</li> </ul>							
<b>*** Taloga Briefing Location ***</b> <b>698 West Ruble Ave</b> <b>Taloga, OK</b>							
<b>8. Division/Group Communication Summary</b>							
Function	Channel	Channel Name	RX Frequency N/W	RX Tone/NAC	TX Frequency N/W	TX Tone/NAC	Mode
COMMAND							
TACTICAL							
AIR TO GROUND							
<b>9. Prepared By (Resource Unit Leader)</b> Carol O'Bryan / Melonie Sellers			<b>Approved By (Planning Section Chief)</b> Dave Berens			<b>Date</b> 04/20/18	<b>Time</b> 2000

# AIR OPERATIONS SUMMARY

OPERATIONAL PERIOD DATE: **04-21-2018**

0800-2000

<b>1. INCIDENT NAME:</b> 34 Complex	<b>2. PREPARED BY:</b> Bruce Wicks <b>PREPARED DATE/TIME:</b> 04/20/2018 1900	<b>3. Sunrise:</b> 0656 <b>Sunset:</b> 2017
<b>4. REMARKS (Safety Notes, Hazards, Air Operations Special Equipment., etc.):</b> Medivac Aircraft: <b>Air Evac</b> Do not over fly structures with external load missions.  All aircraft will use strobes and running lights in smoky conditions. Hazards: Snags, non-incident aircraft, and winds. <u>Squawk 1255</u> <u>Cease all operations at sunset</u>		5.

6. PERSONNEL	Phone	7. FREQUENCIES	AM	FM	8. FIXED WING	FAA#/Base
AOBD---Bruce Wicks ASGS---Pete Kubiak	530-906-2224 404-661-4819	Air/Air Rotor Air/Air Fixed Wing	118.9250 119.9500			Air Attack  AC 690 N848CE – AVK  Air Attack AC 500B – N112AA – AVK
ATGS: <b>Joel Lane</b> – 8CE ATGS: Tony DeFalco – 0FT	530-277-9261 702-592-9215	Air/Ground Primary Air/Ground For IA (VTAC 12)		169.2000  154.4525 TX 156.7		
<u>Woodward Helibase (WWR)</u> HEB2 John Bragg	423-483-2798	National Flight Following		168.650 TX 110.9		
HMGB 612CK J.R. Sullivan	210-396-3304					
HMGB 135BH Billy Groves	406-407-1521					
		Air/Guard  Deck		168.6250 RX/TX Tone 110.9  163.100		

## 9. HELICOPTERS (Use Additional Sheets As Necessary)

FAA N# or Designator	TY	MAKE/MODEL	BASE	START	REMARKS	FAA N# or Designator	TY	MAKE/MODEL	BASE	START	REMARKS
612 CK	1	SH3H	WWR	0930	State resource						
135BH	1	S-70	WWR	0930	State resource						

TYPE/FUNCTION	NAME OF PERSONNEL OR CARGO (if applicable) OR INSTRUCTIONS FOR TACTICAL AIRCRAFT	MISSION START	FLY FROM	FLY TO
Water Drops	As Requested	0930	Woodward HB	Fire

# HEALTH AND SAFETY MESSAGE

*SAFETY* starts with *YOU*

We are ALL accountable for SAFE behaviors

INCIDENT: 34 Complex

DATE: Saturday April 21, 2018

## Major Hazards and Risks:

**Severe Weather** -- Be aware of Incident Severe Weather Plan, Review and follow Thunderstorm safety guidelines in IRPG page 21. Observe 30/30 Rule for lightning safety. Use Risk Management process to determine retreat criteria and actions.

**Transportation** -- Driving will continue to be one of the major hazards. Roads may become slick, slow down if roads are wet. Make sure everyone is wearing a **seat belt** and drive with lights on. Always practice defensive driving. Use caution at Railroad Crossings. . **Minimize distractions.**

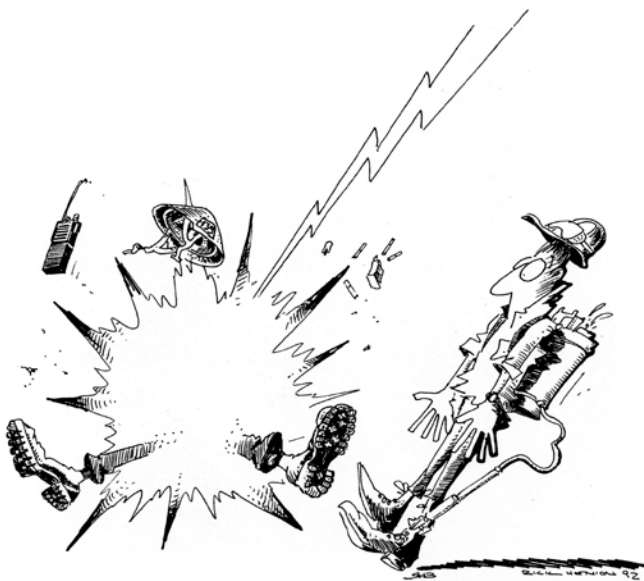
**Gas, Oil, and Water wells** -- Numerous sites, exposed and covered pipe lines, and wind mills are inside fire perimeter. Windsock marked areas may indicate presence of highly toxic gases Stay upwind of these.

**Air Operations** -- Flight Hazards, Bucket Drops, Communications

**Mopup** -- Pay attention to the small details concerning hazard around you (Hazard trees, footing, eye care/goggles, lifting, PPE). Small injuries may lead to major problems.

**Initial Attack**—Always follow LCES and the protocols for Risk Management listed on page 1 of the IRPG.

## Watch Out Situation of the Day



4. UNFAMILIAR WITH WEATHER AND LOCAL FACTORS INFLUENCING FIRE BEHAVIOR

## THUNDERSTORM SAFETY

- Take shelter in vehicles if possible.
- Stay out of dry creek beds that may flood
- Take shelter in a building, if available
- Put down all tools
- Sit or crouch if in open country
- Avoid grouping together
- Do not handle flammable materials in open containers
- Turn off machinery, electric motors
- Avoid lone trees, wire fences, telephone lines, etc.

If you feel an electric charge; tingle, of hair stands up, **DROP TO THE GROUND!**



## INCIDENT SAFETY ANALYSIS 215a

34 Complex - Saturday, April 21, 2018

8. Location	9. Hazard	6. Control or Abatement Action (Engineering, Administrative, PPE, Avoidance, Education, etc)
All	Severe Weather	<ul style="list-style-type: none"> <li>~ Review and follow Thunderstorm Safety guidelines in IRPG page 21.</li> <li>~ Observe 30/30 Rule for lightning safety.....page 21, IRPG.</li> <li>~ Establish "Trigger Points" to withdraw, and ensure all know rally site.</li> <li>~ Use "Risk Management" process to determine retreat criteria and actions.</li> <li>~ Carry rain gear and extra food and water if weather limits retreat to ICP.</li> </ul>
All	Power Utilities	<ul style="list-style-type: none"> <li>~ Notify all personnel of down electrical lines</li> <li>~ Always treat downed wires as energized.</li> <li>~ Identify and avoid high pressure natural gas lines.</li> <li>~ Be aware of utility restoration in your work area.</li> </ul>
All	Air Operations	<ul style="list-style-type: none"> <li>~ Follow " Aviation Watch-Out Situations" on page 44, IRPG.</li> <li>~ Don't plan on air resources for medical transport or resupply.</li> <li>~ Refer to page 57, IRPG for directing bucket drops.</li> <li>~ Ensure positive communication with all air resources.</li> </ul>
All	Vehicle Operations in Inclement Weather	<ul style="list-style-type: none"> <li>~ Be alert for potential muddy and slick road surfaces.</li> <li>~ Avoid parking on soft shoulders along roads.</li> <li>~ Stay off secondary roads in wet conditions.</li> <li>~ Increase following distance on slick road surfaces.</li> <li>~ Send a scout to evaluate roads and work area prior to personnel engagement.</li> </ul>
IA	Initial Attack	<ul style="list-style-type: none"> <li>~ Follow Risk Management guidelines in IRPG page 1.</li> <li>~ Provide through briefing.</li> <li>~ Coordinate with operations</li> <li>~ Establish L.C.E.S. before engagement.</li> </ul>
All	Driving & Traffic	<ul style="list-style-type: none"> <li>~ Practice "Defensive Driving" techniques traveling on all roads and city streets.</li> <li>~ Watch for School Zone</li> <li>~ Observe posted speed limits.</li> <li>~ Avoid distractions (eating, cell phones, radio).</li> <li>~ Ensure that windshields are kept clean of dust and bugs.</li> </ul>
All	Hazard Trees	<ul style="list-style-type: none"> <li>~ Follow "Hazard Tree Safety" guidelines, IRPG page 22.</li> <li>~ Mitigate hazards by flagging off or removing dangerous snags.</li> <li>~ In areas that work must be performed use a spotter in mop-up areas with personnel.</li> <li>~ Don't park vehicles or take breaks in high concentrations of hazard trees.</li> <li>~ Remember that the hazard zone extends a minimum of 2 1/2 tree heights.</li> </ul>
All	Oil & Gas Lines	<ul style="list-style-type: none"> <li>~ Identify sites, Wind Socks indicate presence of Highly Toxic Gases, Stay up Wind.</li> <li>~ Do not depend on sense of smell for warning.</li> <li>~ Park at least 50 feet away from facilities and equipment.</li> <li>~ Avoid low lying areas during stagnant air conditions.</li> <li>~ Be Aware of exposed or shallow buried pipes and utilities.</li> </ul>
All	Injury & Medical Emergency	<ul style="list-style-type: none"> <li>~ Assist injured employee appropriate medical care.</li> <li>~ Use EMT's on Division for initial care.</li> <li>~ Follow medical protocol as outlined in ICS-206 WF &amp; IRPG Pgs 99-108</li> </ul>
All	Communications	<ul style="list-style-type: none"> <li>~ Maintain communication with aviation resources, and suppression organization.</li> <li>~ Ensure all know frequency and protocol for contacting resources.</li> <li>~ Utilize the ICS 205.</li> <li>~ Utilize human repeaters when working in dead spots.</li> </ul>
All	Structure Protection & HAZMAT	<ul style="list-style-type: none"> <li>~ Review "Wildland Urban Interface" Watch outs, IRPG page 12.</li> <li>~ Use "Structure Assessment" checklist, IRPG pages 12-16.</li> <li>~ Follow "HAZMAT Incident Operations" on pages 34-36 in IRPG.</li> </ul>
All	Wildlife & Livestock	<ul style="list-style-type: none"> <li>~ Watch out for wildlife &amp; livestock inside fire area and along roadways.</li> <li>~ Clean up all debris and trash during each operational period.</li> </ul>

<b>MEDICAL PLAN</b>	1. Incident Name 34 Complex	2. Date Prepared <b>04/20/18</b>	3. Time Prepared 1000	4. Operational Period <b>0800 - 2000</b>				
<b>5. Incident Medical Aid Station</b>								
Medical Aid Stations	Location		Paramedics Yes No					
Jeff Cummings EMTF	317-730-6653	ICP 108 Temple Houston Dr, Woodward, Ok		X				
Patrick Horan EMPF	303-641-1137	Division A		X				
Wilson Rowell EMPF	334-504-2608	Division G		X				
John Dunzweiler EMPF	606-594-1627	Initial Attack #1		X				
Matt Jones EMPF	360-824-1360	Division D		X				
<b>6. Transportation</b>								
<b>A. Air Ambulance Services</b>								
Name	Address	Phone	Paramedics Yes No Tail Number					
Air Evac Life Team Bell 206	1620 Santa Fe, Woodward, OK 73801	<b>1-800-247-3822</b>	X	<b>N130AE</b>				
<b>(NO wind gust spread exceeding 18mph)</b>	<b>(NO winds over 45mph)</b>							
<b>B. Incident Ambulances</b>								
Name	Location	Paramedics Yes No Call Sign						
Woodward County EMS	ICP 108 Temple Houston Dr, Woodward, OK <b>(0800 - 2100)</b>	X		S-43				
Alex Brunner EMTB	<b>580-216-7938</b>		X					
Marty Graham EMT	<b>580 -216-0081</b>	X						
<b>7. Hospitals</b>								
Name	Address	Travel Time Air Ground		Phone	Helipad Yes No	Burn Center Yes No		
University Medical Center	700 NE 13th, Lincoln Ave, OKC Level 1 Trauma	60 min	120m	405-271-4700	X		X	
Integrus Baptist Medical Center	3300 NW EXPY OKC Burn Center/Level 3	60 min	120m	405-949-3011	X	X		
St. Mary's Regional	305 S. 5th Enid, OK Trauma/Level 3	30 min	90 min	580-233-6100	X		X	
Integrus Bass	600 S. Monroe, Enid, OK Cardiac/Level 3	30 min	90 min	580-233-2300	X		X	
Alliance Health Woodward	1620 Santa Fe, Woodward, OK General/Level 3	15 min	20 min	877-863-9595	X		X	
** Note: Air transport times are from the incident to the hospital only. Does not include flight time to the incident **								
<b>8. Medical Emergency Procedures</b>								
<ol style="list-style-type: none"> <li>1. Patient or nearest responder will notify Supervisor of the injury.</li> <li>2. The Supervisor will become the Incident-Within-the Incident Commander (IWI).</li> <li>3. IWI Commander will notify the nearest medical responder and ICP communications of the Incident</li> <li>4. IWI Commander will initiate the Nine Line Medical Incident Report attached to the 206 Form</li> </ol>								
Prepared by (Medical Unit Leader) Jeff Cummings MEDL					10. Reviewed by (Safety Officer) Larry Holsomback, SOF2			

# 34 Complex Incident Hazardous Weather Plan

## **Notification Process**

The primary concerns for this plan is preparedness in event of a tornado or hail storm with large hail. Parts of this plan may be used in the aftermath of an earth quake or flood.

IMET (the weather person) will be in contact with OEM (Office of Emergency Management) or the NWS Norman OK. In event that it is determined that hazardous weather is eminent the IMET will notify the IC of areas of potential threat.

In event injury or damage the event will be handles as an incident within an incident using the 9- line process.

## **Tornadoes/Lighting:**

**ICP:** In event there is a threat to the Incident Command Post, Section Chiefs will move their personnel to designated safe areas (see attached map). These areas are reported to have been designed to withstand some amount of wind. After the threat has passed and damage has occurred, all personnel will assemble in the parking lot between the ICP and the Rodeo Arena. Section Chiefs will roll call to determine the presents of all personnel.

**Fire line and vicinity:** If the threat is to the personnel on the fire line or vicinity, communications will notify operations and all personnel affected by the threat. Division Supervisors will identify potential safety areas and gathering areas to roll call personnel after the threat has passed.

## **Hail Storms/Lighting:**

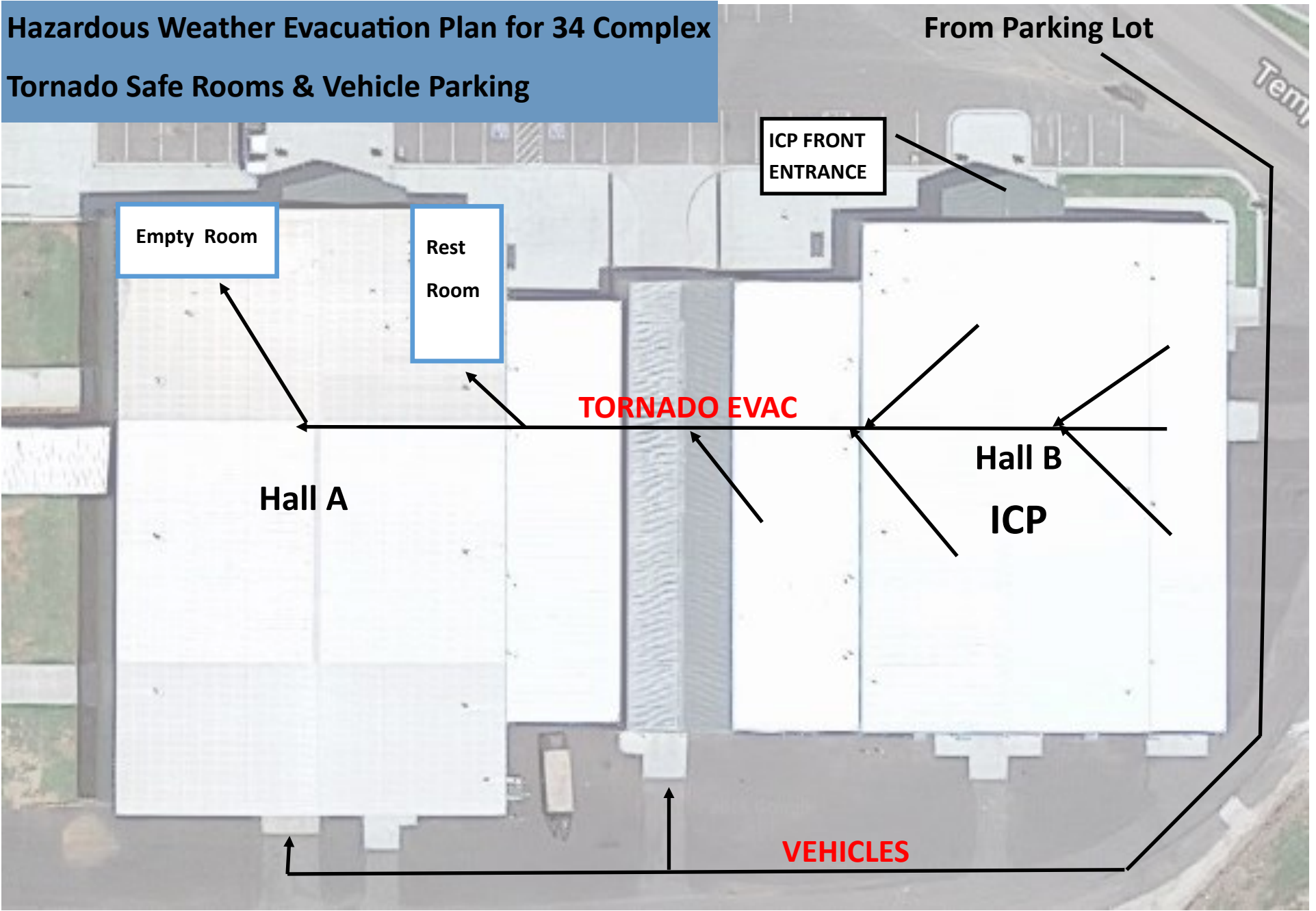
**ICP:** Notifications will be made of the approaching threat. Personnel are to be advised to stay indoors. Of secondary concern is damage to incident vehicles. Safe areas indoors have been identified for vehicle parking (see attached map). Organization will be directed by logistics for parking.

**Fire line and vicinity:** Notifications will be made of the approaching threat. Division Supervisors will move personnel to areas of shelter. If feasible locate shelter for incident vehicles.

**Medical:** In the event of injury the established process of rescue, recovery, and treatment of injury will apply. Supervisors will be notified of injuries or fatalities. The nine line (the process of how to organize a medical emergency or response) will be used to organize the rescue response.

**As is mandatory in the wildland fire environment, planning, risk assessment, and execution is the key to safety. Don't wait until the black cloud is over your head to make a plan.**

**Hazardous Weather Evacuation Plan for 34 Complex  
Tornado Safe Rooms & Vehicle Parking**



<b>INCIDENT RADIO COMMUNICATIONS PLAN</b>			1. Incident Name <b>34 COMPLEX</b>			2. Date Time Prepared <b>04/20/2018 1730</b>		3. Operational Period Date/Time <b>04/21/2018 0800-2000</b>	
<b>4. Basic Radio Channel Utilization</b> Mode: W= Wideband, N= Narrowband, D= Digital, M= Mixed									
CHAN NAME	CH #	Function	Frequency	Tone/NAC	Mode	TGID	Assignment	Remarks	
MESA	1	COMMAND	RX: 170.4500		Analog		ALL DIVISIONS	MESA and BRY SIN LINKED	
			TX: 168.1000						
BRY SIN	2	COMMAND	RX: 169.3750		Analog		G and Southern Area		
			TX: 164.7125						
FT SUPPLY	3	COMMAND	RX: 159.3900		Analog		DIVISION J		
			TX: 151.2800	94.8					
VCALL 10	4	TAC	RX: 155.7525		Analog		A, INITIAL ATTACK 3		
			TX: 155.7525	156.7					
VTAC 11	5	TAC	RX: 151.1375		Analog		J, STRUCTURE PROTECTION		
			TX: 151.1375	156.7					
VTAC 13	6	TAC	RX: 158.7375		Analog		D, INTIAL ATTACK 1		
			TX: 158.7375	156.7					
VTAC 14	7	TAC	RX: 159.4725		Analog		G, INITIAL ATTACK 2		
			TX: 159.4725	156.7					
A/G PRI	8	A/G	RX: 169.2000		Analog				
			TX: 169.2000						
VTAC 12	9	A/G	RX: 154.4525		Analog		INITIAL ATTACK		
			TX: 154.4525	156.7					
	10		RX:		Analog				
			TX:						
	11		RX:		Analog				
			TX:						
	12		RX:		Analog				
			TX:						
	13		RX:		Analog				
			TX:						
	14		RX:		Analog				
			TX:						
	15		RX:		Analog				
			TX:						
AIR GUARD	16	AIR GUARD	RX: 168.6250		Analog				
			TX: 168.6250	110.9					
5. Prepared by (Communications Unit) TERRY BRINSON COML									

*Note: This is not a standard NWCG ICS205 Form*

## Human Resource Message

The mission of the Gold Team is to safely, effectively and efficiently manage the 34 Complex by maintaining a team of skilled and productive personnel.

During this incident we will strive to successfully complete our mission and achieve our objectives while creating a positive, drug and alcohol free work environment for all assigned incident personnel.

The Gold Team fully supports EEO and will not tolerate sexual harassment or any form of discrimination!

All inappropriate behavior will be dealt with promptly. Disciplinary action and reporting back to an individual's home unit will be initiated as necessary.

Please report any incidents of inappropriate behavior to your supervisor, Danny Bryant or myself immediately.

*Steve Parrish*, Incident Commander



## TRAINING MESSAGE

### DON'T FORGET

**Taskbooks are to be used every day to identify what needs to be learned & what needs to be evaluated.**

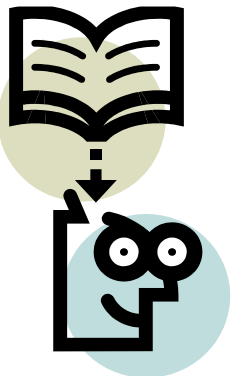
### *Trainers and Evaluators*

Remember to check-in and demob

with the Training Specialist

Diane Bolt, 828-553-8870

(Located next to DEMOB and CHECK-IN)



# 34 COMPLEX

## DEMOB STEPS

**Check the board in front of Check-in & DMOB!**

**Step 1. Have at least 8 hours of rest before you begin travel!**

Turn in all supplies and radios. *\*Contract equipment – clear equipment records with Ground Support.*

*\*All Trainees should be closed out with the Training Specialist.*

*\*Clear comp and claims reported through Medical and Finance.*

**Step 2.** Report to the **DEMOB** unit and pick up your **DEMOBILATION CHECKOUT** form (ICS 221).

**Step 3.** Go to Units checked on ICS 221 demob form.

**Step 4.** Turn in all documentation (*performance ratings, unit logs etc.*) to the Documentation Unit.

**Step 5.** Report to Finance and clear your personnel time and equipment time.

**Step 6.** Report to Demob Unit to sign off on ICS 221. Tell demob your Estimated Time of Arrival to home unit.

You are now ready to leave. **Drive Safely!!**

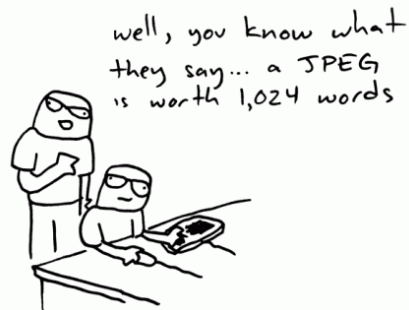


# 34 Complex Fire How to reach us!

Public Information Phone: 405-730-9107

Email: [OK34ComplexFire@gmail.com](mailto:OK34ComplexFire@gmail.com)

## WE NEED PICTURES!



Text them to: **252-423-0815** or

Email: [OK34ComplexFire@gmail.com](mailto:OK34ComplexFire@gmail.com)

REMEMBER we can NOT use photos that show folks without full PPE

AND tell us who you are, what you are doing, and where!

---

**Facebook:** [oklahomaforestryservices](https://www.facebook.com/OklahomaForestry)

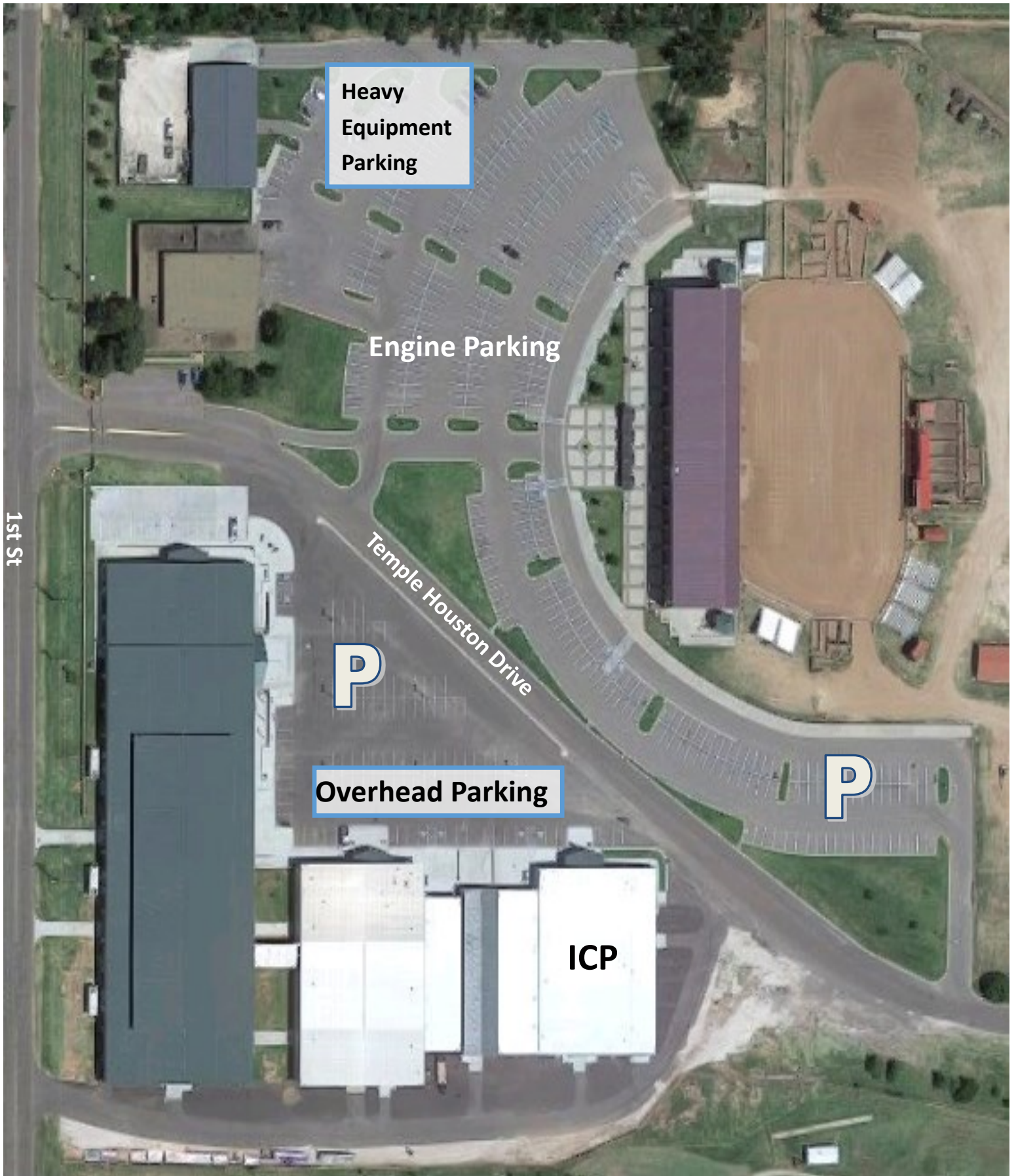
[www.facebook.com/OklahomaForestry](https://www.facebook.com/OklahomaForestry)

**Twitter:** <https://twitter.com/OKForestService>

**INCIWEB:** <https://inciweb.nwcg.gov/incident/5747/>

- 
- We are all **Public Information Officers**.
  - We all represent **Oklahoma Forestry Services**.
  - We all have a story to tell.
  - We encourage you to share your story about what you do on the 34 Complex Fire with people you meet.
  - We also encourage you to help us come up with story ideas, especially during the coming rainy days. What have you seen in this community that is a story we can tell?





Heavy  
Equipment  
Parking

Engine Parking

Temple Houston Drive

P

Overhead Parking

ICP

P

# 34 Complex ICP Parking





**Main Entrance**

**Restrooms**

**Public Information**

**Ground Support**

**Air Ops**  
**Safety**  
**Operations**

**Resources**

**Briefing**

**Ordering Supply Facilities Logistics**

**Check—In**  
**Demob**  
**Training**

**Finance**

**Incident Command**

**Communica-tions**

**Plans**

**Situation**

**ITSS**

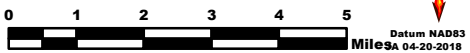
**Supply**



**Medical**

# 34 Complex OK-OKS-180037 IAP Map 04/21/18 Day

Est 62,089 Acres on 4/20/2018



## DIV A

DP-30

## DIV D

## DIV J

Dip

DP-40

DP-10

DP-1

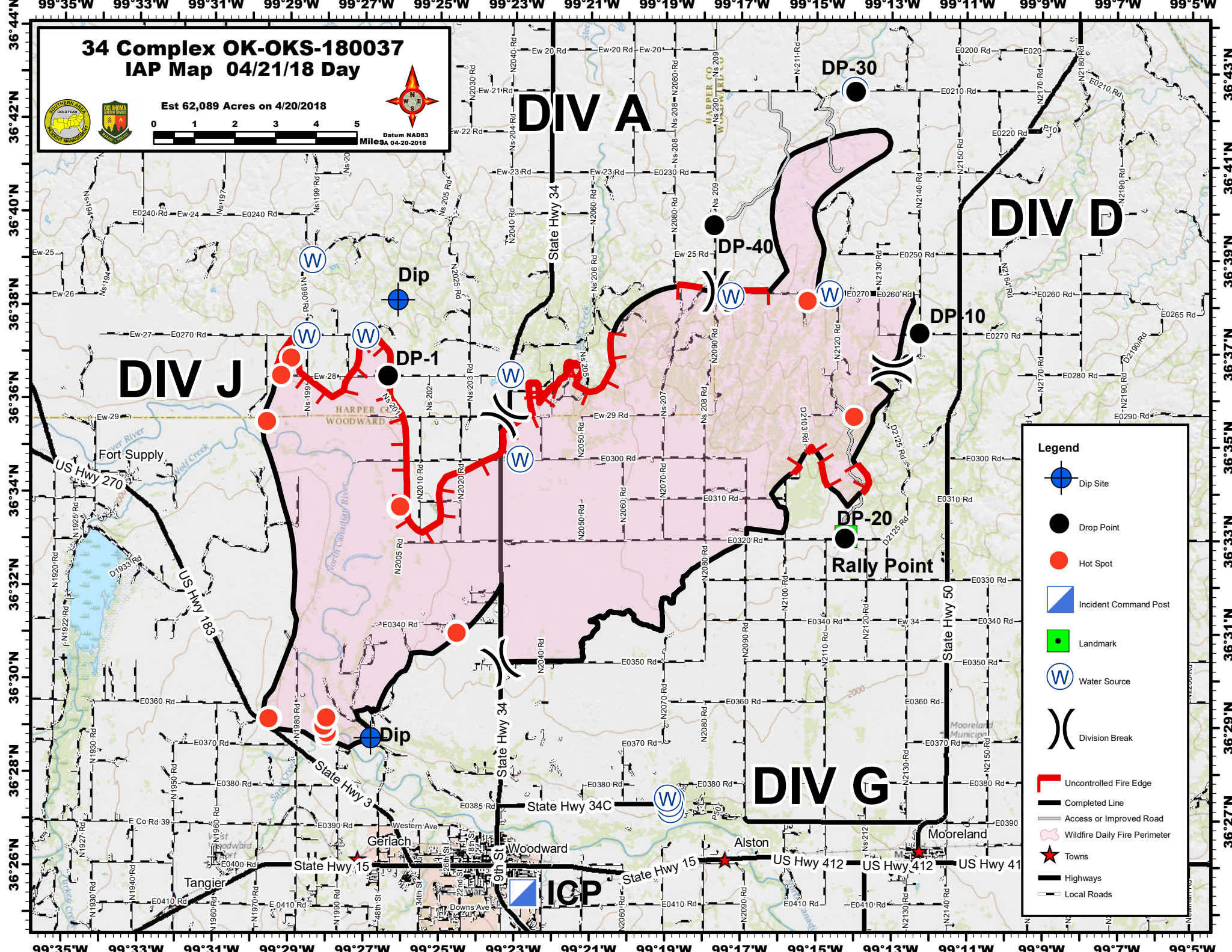
DP-20

Rally Point

## DIV G

### ICP

- #### Legend
- Dip Site
  - Drop Point
  - Hot Spot
  - Incident Command Post
  - Landmark
  - Water Source
  - Division Break
  - Uncontrolled Fire Edge
  - Completed Line
  - Access or Improved Road
  - Wildfire Daily Fire Perimeter
  - Towns
  - Highways
  - Local Roads



## PHONE LIST - 34 Complex

Position	Name	Phone Number	Position	Name	Phone Number
<b>COMMAND</b>			<b>FINANACE</b>		
Incident Commander	Steve Parrish	850-524-1244	Time Unit Leader (t)	Sherise Foster	919-943-7843
Incident Commander	Danny Bryant	601-500-2505	Procurment Unit Leader	Craig Ericson	570-720-4743
Liaison Officer	Keith Lawrence	803-522-5264	Cost Unit Leader	Tom Steele	770-363-3583
Public Information	Bonnie Strawser	252-216-8667	Comp/Claims	Terri McDonald	352-454-5385
Public Information	John Nichols	501-282-9634	Comp/Claims (t)	Pamela Stamper	276-389-7477
Public Information	Adam Solt	435-201-0856	Personel Time Recorder (t)	Gustavo Vallejo	423-284-1041
Public Information (t)	Donald Simon	910-975-1895	<b>PLANNING</b>		
Safety Officer	Buddy Kelley	850-447-1344	Chief	Dave Berens	601-319-6823
Safety Officer	Mark Sullivan	205-531-7183	Resource Unit Leader	Melonie Sellers	601-508-8997
Safety Officer	Larry Holsomback	706-280-4716	Resource Unit Leader	Carol O'Bryan	903-263-8704
Safety Officer	Randy Miller	571-232-7922	Situation Unit Leader	Bill Coates	770-688-5721
<b>OPERATIONS</b>			Situation Unit Leader (t)	EJ Bunzendahl	859-556-2347
Planning Ops	Ron Bertsch	706-515-5625	Fire Behavior Analyst	Jamie Atkins	706-955-5986
Planning Ops (t)	Shawn Nagle	662-231-4024	IMET	David Shallenberger	606-481-9238
Field Ops	Jeff Schardt	706-280-5498	GISS	Chris Evans	928-273-4203
Field Ops (t)	Dan Martin	540-266-2042	GISS	Christian Vose	828-342-0512
Division A	Sean Gast	209-770-6265	GISS (t)	Joseph Harsh	662-803-1973
Division A (t)	Joe Pearlman	209-272-2132	GISS (t)	JT Allen	405-593-6226
Division D	Greg Salansky	865-414-6461	Demob	Henry Hickerson	540-798-2218
Division D (t)	Jared Nobles	352-317-6297	Check In	Angela Marcano	706-474-4026
Division G	Matt Johnson	870-415-0185	Check In (t)	Jocelyn Howell	214-934-0138
Division J	Tom Crews	252-216-6361	Training Specialist	Diane Bolt	828-553-8870
Structure Protection Group	Randy Jones	352-267-7700	Compter Tech	John Edwards	850-261-9127
Structure Protection Group (t)	Jason Klawinsky	936-520-8827	Compter Tech	Nikita Carty	305-878-9907
Initial Attack Group #1	Heath Thomas	501-208-7077	<b>LOGISTICS</b>		
Initial Attack Group #1 (t)	Mike Brod	706-212-8012	Chief	Susan Cornett	903-930-5321
Initial Attack Group #2	Hans Rudolf	541-969-0295	Chief (t)	Cameron Crisp	304-642-2035
Initial Attack Group #3	Jerry Anderson	940-210-7769	Deputy	Duane Cihlar	218-370-1662
Initial Attack Group #3 (t)	Dennis Gaston	804-840-5493	Supply Unit	Ron Zabka	603-630-4916
Rhea Group	Bryan Elam	580-216-9137	Supply Unit (t)	John Dunlap	580-216-1882
<b>AIR OPERATIONS</b>			Facilities Unit	Gene-Paul Matson	434-665-0444
Air Operation Branch Director	Bruce Wicks	530-906-2224	Facilities Unit	Lodging Contact	580-216-8105
Air Support Group Supervisor	Pete Kubiak	404-661-4819	Ground Support Unit Leader	Todd Waller	501-337-6308
Air Tatical Group Supervisor	Tony Defalco	702-592-9215	Ground Support Unit Leader (t)	Kevin Wagner	479-243-6564
Air Tatical Group Supervisor	Joel Lane	559-310-9430	Ordering Manager	Nina Donley	205-243-8816
Helibase Manager	John Bragg	423-483-2798	Ordering Manager	Durinda Hulett	309-338-1667
<b>FINANACE</b>			Receiving & Distribution	Chris Combs	727-992-0046
Chief	Wanda Kelley	423-584-1472	Communications	Terry Brinson	386-868-7649
Chief (t)	Jennifer Cross	423-715-9025	Medical Unit Leader	Jeffery Cummings	317-730-6653
Time Unit Leader	Jean Frick	828-361-5361	Security Manager	Tom Neal	618-201-2111

<b>UNIT LOG</b>	1. Incident Name	2. Date Prepared	3. Time Prepared
4. Unit Name/Designators	5. Unit Leader (Name and Position)		6. Operational Period

7. Personnel Roster Assigned

Name	ICS Position	Home Base

8. Activity Log

Time	Major Events

9. Prepared by (Name and Position)

## Medical Incident Report- "9 Line"

**FOR ALL MEDICAL EMERGENCIES: IDENTIFY ON SCENE INCIDENT COMMANDER BY NAME AND POSITION AND ANNOUNCE "MEDICAL EMERGENCY" TO INITIATE RESPONSE FROM IMT COMMUNICATIONS/DISPATCH.**

Use items one through nine to communicate situation to communications/dispatch.

**1. CONTACT COMMUNICATIONS/DISPATCH**

*Ex: "Communications, Div. Alpha. Stand-by for Priority Medical Incident Report." (If life threatening request designated frequency be cleared for emergency traffic.)*

**2. INCIDENT STATUS: Provide incident summary and command structure.**

Nature of Injury/Illness		<i>Describe the injury (Ex: Broken leg with bleeding)</i>
Incident Name		<i>Geographic Name + "Medical" (Ex: Trout Meadow Medical)</i>
Incident Commander		<i>Name of IC</i>
Patient Care		<i>Name of Care Provider (Ex: EMT Smith)</i>

**3. INITIAL PATIENT ASSESSMENT: Complete this section for each patient. This is only a brief, initial assessment. Provide additional patient info after completing this 9 Line Report.**

Number of Patients:	Male / Female	Age:	Weight:
Conscious? <input type="checkbox"/> YES <input type="checkbox"/> NO = MEDEVAC!			
Breathing? <input type="checkbox"/> YES <input type="checkbox"/> NO = MEDEVAC!			
Mechanism of Injury: <i>What caused the injury?</i>			
Lat/Long (Datum WGS84)			

**4. SEVERITY OF EMERGENCY, TRANSPORT PRIORITY**

SEVERITY	TRANSPORT PRIORITY
<input type="checkbox"/> URGENT-RED Life threatening injury or illness. <i>Ex: Unconscious, difficulty breathing, bleeding severely, 2° – 3° burns more than 4 palm sizes, heat stroke, disoriented.</i>	Ambulance or MEDEVAC helicopter. Evacuation need is IMMEDIATE.
<input type="checkbox"/> PRIORITY-YELLOW Serious Injury or illness. <i>Ex: Significant trauma, not able to walk, 2° – 3° burns not more than 1-2 palm sizes.</i>	Ambulance or consider air transport if at remote location. Evacuation may be DELAYED.
<input type="checkbox"/> ROUTINE-GREEN Not a life threatening injury or illness. <i>Ex: Sprains, strains, minor heat-related illness.</i>	Non-Emergency. Evacuation considered Routine of Convenience.

**5. TRANSPORT PLAN:**

Air Transport: (Agency Aircraft Preferred)

<input type="checkbox"/> Helispot	<input type="checkbox"/> Short-haul/Hoist	<input type="checkbox"/> Life Flight	<input type="checkbox"/> Other
Ground Transport:			
<input type="checkbox"/> Self-Extract	<input type="checkbox"/> Carry-Out	<input type="checkbox"/> Ambulance	<input type="checkbox"/> Other

**6. ADDITIONAL RESOURCE/EQUIPMENT NEEDS:**

<input type="checkbox"/> Paramedic/EMT(s)	<input type="checkbox"/> Crew(s)	<input type="checkbox"/> SKED/Backboard/C-Collar
<input type="checkbox"/> Burn Sheet(s)	<input type="checkbox"/> Oxygen	<input type="checkbox"/> Trauma Bag
<input type="checkbox"/> Medication(s)	<input type="checkbox"/> IV/Fluid(s)	<input type="checkbox"/> Cardiac Monitor/AED
<input type="checkbox"/> Other (i.e. splints, rope rescue, wheeled litter)		

**7. COMMUNICATIONS:**

Function	Channel Name/Number	Receive (Rx)	Tone/NAC *	Transmit (Tx)	Tone/NAC *
A - G	34 Complex Fire	169.200		169.200	
COMMAND	MESA	170.45		168.1	
AIR-TO-GRND	VTAC 12	154.4525	156.7	154.4525	For Aircraft without A-G

\*(NAC for digital radio system)

**8. EVACUATION LOCATION:**

Lat/Long (Datum WGS84) <i>EX: N 40 42.45' x W 123 03.24'</i>	
Patient's ETA to Evacuation Location:	
Helispot/Extraction Size and Hazards:	

**9. CONTINGENCY:**

<b>Considerations:</b> <i>If primary options fail, what actions can be implemented in conjunction with primary evacuation method? Be thinking ahead...</i>	<b>REMEMBER:</b> <b>Confirm ETA's of resources ordered Act according to your level of training Be Alert. Keep Calm. Think Clearly. Act Decisively.</b>
--	--