



# Incident Action Plan Unified Command



## Day Operational Period

Sunday

4/22/18

0800-2000



Woodward F.D.

**34 Complex**

OK-OKS-180037

**PNLN1P (1502)**

FF2000000LN1PO Fund 18x



QR Code for IAP &  
Maps

INCIDENT OBJECTIVES	1. Incident Name  <b>34 Complex</b>	2. Date Prepared <b>4/21/18</b>	3. Time Prepared <b>1700</b>
4. Operational Period <b>DAY 4/22/18 0800 – 2000</b>			
5. General Control Objectives For The Incident <u>Objectives for the Incident:</u> <ul style="list-style-type: none"> <li>• Ensure protection of human life as a top priority through the use of sound risk management decisions in all actions.</li> <li>• Provide for protection of private property, infrastructure, State, County and Municipal facilities by using sound suppression tactics on all initial and extended attack fires.</li> <li>• Provide training opportunities to Oklahoma Forestry Services personnel to strengthen organizational capabilities and complete training assignments.</li> <li>• Ensure sensitivity to the impacts of suppression activities to private property by fostering and maintaining relationships with appropriate agencies, elected officials, business leaders and members of the public.</li> <li>• Provide accurate information messaging through coordination between the Southern Area Gold Team and Oklahoma Forestry Services Public Information Officers.</li> </ul>			
<u>Control Objectives:</u> <ul style="list-style-type: none"> <li>• Utilize full suppression tactics to keep 34 Complex fire contained within the current footprint by utilizing a combination of ground and aerial resources.</li> <li>• Utilize strategic firing operations to prevent escape or stop forward spread of fire if appropriate and directed to do so by the Operations Section Chief.</li> <li>• Respond to new fires at the request of Oklahoma Forestry Services to support and suppress any new emerging incidents under a Unified Command Structure.</li> </ul>			
6. Weather forecast for Period  Expect mainly cool and cloudy conditions to begin the day on Sunday. Some morning fog and drizzle is possible before clearing into the afternoon. Partly cloudy skies will then be in place with some cool northerly winds keeping temperatures in the mid-60s. A few wind gusts are still possible in the afternoon up to 25 mph. Relative humidity values in the afternoon will be well above fire weather concerns.			
7. General Safety Message  Look up, look down, look all around for hazards, recognize them and mitigate them.			
8. ATTACHMENTS (X IF ATTACHED) <input checked="" type="checkbox"/> Organization List - ICS 203 <input checked="" type="checkbox"/> Medical Plan - ICS 206 <input type="checkbox"/> _____ <input checked="" type="checkbox"/> Division Assignment Lists - ICS 204 <input type="checkbox"/> Incident Map <input type="checkbox"/> _____ <input checked="" type="checkbox"/> Communications Plan - ICS 205 <input type="checkbox"/> Traffic Plan <input type="checkbox"/> _____			
9. Prepared By (Planning Section Chief)  <b>/s/ Dave Berens</b>		10. Approved By (Incident Commander)  <b>/s/ Danny Bryant</b>	

ORGANIZATION ASSIGNMENT LIST			9.	Operations Section	
1. Incident Name		<b>34 Complex</b>	Planning Operations	Ron Bertsch, Shawn Nagle (t)	
2. Date			Field Operations	Jeff Schardt, Dan Martin (t)	
04/21/18	3. Time				
	1700				
4. Operational Period		04/22/18 DAY (0800 – 2000)	<b>a.</b>	<b>Divisions/Groups</b>	
5. Incident Commander and Staff			Division	A	Sean Gast, Joe Pearlman (t)
Incident Commander	Steve Parrish, Danny Bryant Todd Finley, Tom Marcom		Division	D	Greg Salansky, Jared Nobles (t)
Liaison Officer	Keith Lawrence		Division	G	Matt Johnson
Safety Officer	Buddy Kelley, Mark Sullivan, Larry Holsomback, Randy Miller		Division	J	Tom Crews
Information Officer	Bonnie Strawser, Donald Simon, John Nichols, Adam Solt		Group	Structure Protection	Randy Jones, Jason Klawinsky (t)
			Group	Initial Attack #1	Heath Thomas, Mike Brod (t)
			Group	Initial Attack #2	Hans Rudolf
			Group	Initial Attack #3	Jerry Anderson, Dennis Gaston (t)
			Group	Rhea Fire	Josh Hernandez
<b>6.</b>	<b>Agency Reps</b>				
Woodward F.D. Chief	Todd Finley				
Mooreland F.D. Chief	Tom Marcom				
Fort Supply F.D. Chief	Mike Petty				
Sharon F.D. Chief	Bill Phillips				
Mutual F.D. Chief	Kevin Mitchell		<b>b.</b>	<b>Air Operations Branch</b>	
Oklahoma Forestry Services	Mark Goeller		Air Operation Branch Director	Bruce Wicks	
Oklahoma Emergency Management	Kristal Kuhn		Air Support Group Supervisor	Pete Kubiak	
Woodward Emergency Management	Matt Lehenbauer		Air Tactical Group Supervisor	Tony Defalco	
Mooreland Emergency Management	Jay Krukenberg		Air Tactical Group Supervisor	Joel Lane	
Harper County Emergency Management	Dale Spradlin		Helibase Manager	John Bragg	
<b>7.</b>	<b>Planning Section</b>				
Chief	Dave Berens				
Resources Unit	Melonie Sellers, Carol O'Bryan				
Situation Unit	Bill Coates, E.J. Bunzendahl (t)				
FBAN	Jamie Atkins		<b>8.</b>	<b>Logistics Section</b>	
IMET	David Shallenberger		Chief	Susan Cornett, Cameron Crisp (t)	
Geo. Info. Spec.	Chris Evans, Christian Vose, Joseph Harsh (t), JT Allen (t)		Deputy	Duane Cihlar	
Demob Unit	Henry Hickerson		Supply Unit	Ron Zabka, John Dunlap (t)	
Status Check-In	Angela Marcano, Jocelyn Howell (t)		Facilities Unit	Gene-Paul Matson, Nelson Gonzalez-Sullow (t)	
Training	Diane Bolt		Base Camp	JaDe Fleck	
ITSS	John Edwards, Nikita Carty (t)		Ground Support	Todd Waller, Kevin Wagner (t)	
Documentation	Jan Grisedale		Equipment Manager	Tristan Jamieson, Jason Mchan	
<b>10.</b>	<b>Finance Section</b>				
Chief	Wanda Kelley Jennifer Cross (t)		Ordering Manager	Nina Donley, Durinda Hulett	
Time Unit	Jean Frick Sherise Foster (t)		Receiving & Distrib. Mgr.	Chris Combs	
Cost Unit	Tom Steele		Communications Unit	Terry Brinson	
Comp/Claims	Terri McDonald Pamela Stamper (t)		Radio Operator	Daniel Brown, Tyler Befus, Reggie Escarlan	
Personnel Time Recorder	Gustavo Vallejo (t)		Medical Unit Leader	Jeffery Cummings	
Procurement	Craig Ericson		Security	Tom Neal	
Prepared by (RESL) /s/ Carol O'Bryan / Melonie Sellers					



## INCIDENT Weather Forecast



**FORECAST NO:** 08

**NAME OF FIRE:** 34 Complex

**PREDICTION FOR:** Day SHIFT

**UNIT:** Gold Team

**SHIFT DATE:** April 22 2018

**SIGNED:** David Shallenberger

**TIME AND DATE**

**Incident Meteorologist**

**FORECAST ISSUED:** 2000 April 21 2018

---

### **WEATHER DISCUSSION:**

Expect mainly cool and cloudy conditions to begin the day on Sunday. Some morning fog and drizzle is possible before clearing into the afternoon. Partly cloudy skies will then be in place with some cool northerly winds keeping temperatures in the mid-60s. A few wind gusts are still possible in the afternoon up to 25 mph. Relative humidity values in the afternoon will be well above fire weather concerns.

---

### **WEATHER FORECAST SUNDAY:**

**WEATHER:** Cloudy with patchy fog and drizzle in the morning, becoming partly cloudy in the afternoon.

**TEMPERATURES:** 64-69

**HUMIDITY:** 35% to 40%

**20 FT WINDS:** N 5 to 15 mph early, then increasing with gusts to 20 mph in the afternoon

**RFTI INDEX:** 0 Nil

**HAINES INDEX:** 3

**DISPERSION:** Poor in the morning around 20, increasing to good in the afternoon around 60

---

### **WEATHER FORECAST SUNDAY NIGHT:**

**WEATHER:** Partly cloudy, then clearing late.

**TEMPERATURES:** 37-42

**HUMIDITY:** 95% to 100%

**20 FT WINDS:** NE 5 to 15 mph

**RFTI INDEX:** 0 Nil

**HAINES INDEX:** 2

**DISPERSION:** Poor around 20

---

### **OUTLOOK FOR MONDAY:**

High pressure will move into place for the day on Monday. With this, expect partly cloudy skies with light northeast winds in place. A few wind gusts are possible in the afternoon up to 15 mph. An overall dry day is expected with relative humidity values expected to dip back down into the 30 to 40% range.

---

### **EXTENDED FORECAST TUESDAY AND WEDNESDAY:**

By Tuesday, a weak cold front will move through the area bringing a 30% chance of showers and thunderstorms. Rainfall amounts look to be less than a quarter of an inch at this time. A period of high pressure and dry conditions will set up follow for Wednesday with overall dry weather returning. Relative humidity values are expected to dip back into the 20s.

## FIRE BEHAVIOR FORECAST

<b>FORECAST NUMBER:</b> 7	<b>TYPE OF FIRE:</b> Wildland
<b>FIRE NAME:</b> 34 Complex	<b>OPERATIONAL PERIOD:</b> Day Shift Sunday April 22nd, 2018
<b>DATE ISSUED:</b> April 21st, 2018	<b>TIME ISSUED:</b> 2000
<b>UNIT:</b> OK - OKS-180037	<b>SIGNED:</b> <i>James Atkins</i> James Atkins, FBAN

### INPUTS

#### WEATHER SUMMARY:

See attached forecast

**Max Temp:** 64-69 **Min Temp:** 37-42

**Min RH:** 35-40% **Max RH:** 95-100% (Excellent)

**Winds (20'):** N 5-15 Gust to 20 mph in the pm

**LAL:** 1 **Haines:** 3 **CWR:** 0%

### OUTPUTS

#### FIRE BEHAVIOR

##### GENERAL

The grass/shrub fuel beds have responded well with the much need rain that has fallen over the fire area in the last 36 hours. Any fire activity today will be characterized as smoldering in heavy fuels not exposed to rainfall. As the sun reappears and the wind speeds increase throughout the afternoon, the grass component will begin to dry and may be able to support forward spread by late in the burn period.

**Forecasted Fuel Moistures:** 1 Hour (21%), 10 Hour (24%), 100 Hour (17%), 1000 Hour (6%)

**Red Flag Threat Index for today:** 0 "Nil"

**POI:** 0-10%

**Rate of Spread:** <1ch/hr

**Flame Lengths:** <1ft

##### SPECIFIC:

**34 Complex:** Another excellent day to identify any remaining heat and get those areas mopped up for good.

**Initial Attack:** Very little concern throughout the day regarding new IA fires. Any new fires will most likely be confined to single trees with minimal forward spread.

### AIR OPERATIONS:

Unmanned Aircraft Systems (UAS) or "Drones" have been utilized by the media, insurance companies and the public in the fire area. These aircraft can add additional hazards to an already hazardous job especially for rotor wing aircraft.

### SAFETY

When cold trailing remember to use the back of your ungloved hand while checking for heat. If you touch something hot with an open hand your first instinct is to close your hand, thus resulting in a burn injury.

**Food for thought:** 1 inch of rain equals 27,154 gallons per acre. 62,432 ac x 27,154 = 1,695,278,528 gallons of rain.  
DC-10 VLAT drops 12,000 gallons. The rain we received equals 141,273 loads.

## Division/Group Assignment List (ICS 204 WF)

<b>1. Incident Name:</b>				<b>3.</b>				
<b>34 Complex</b>				<b>Branch:</b>		<b>Division/Group:</b>		
<b>2. Operational Period: 0800 - 2000</b>				<b>A</b>				
Date/Time From: 04/22/18 0800		Date/Time To: 04/22/18 2000						
<b>4. Operations Personnel</b>								
<b>AIR ATTACK SUPERVISOR</b>		Tony Defalco 4/28 Joel Lane		<b>FIELD OPERATIONS</b>		Jeff Schardt 4/28 Dan Martin (t) 4/28		
<b>DIVISION/GROUP SUPERVISOR</b>		Sean Gast O-22 4/29 Joe Pearlman (t)O-24 4/28		<b>PLANNING OPERATIONS</b>		Ron Bertsh 4/28 Shawn Nagle (t) 4/26		
<b>5. Resources Assigned this Period</b>								
Strike Team / Task Force / Resource Designator			LWD	Leader		Number Persons	Drop Off PT./Time	Pick Up PT./Time
ENG T3 Utah Fire 16 E-70			4/30	Krista Spraycar		3	0800	2000
SOF2			4/29	Randy Miller		1	0800	2000
EMPF			4/29	Patrick Horan O-33		1	0800	2000
<b>6. Control Operations/Work Assignments:</b>								
<b>Task:</b>								
<ul style="list-style-type: none"> <li>• Mop up and cold trail 1 chain in from perimeter of fire.</li> </ul>								
<b>Purpose:</b>								
<ul style="list-style-type: none"> <li>• Keep fire within current perimeter</li> </ul>								
<b>End State:</b>								
<ul style="list-style-type: none"> <li>• No lateral spread of fire, one chain mop up completed, and has not grown in size for one operational period.</li> </ul>								
<b>7. Special Instructions:</b>								
<ul style="list-style-type: none"> <li>• Establish and maintain LCES on 34 Complex and emerging fires.</li> <li>• Document any damage or burned structures / infrastructure with a lat/long and photo</li> <li>• Stay clear and capture any lat/long of any hazmat situation and notify immediate supervisor</li> </ul>								
<b>8. Division/Group Communication Summary</b>								
Function	Channel	Channel Name	RX Frequency N/W	RX Tone/NAC	TX Frequency N/W	TX Tone/NAC	Mode	
COMMAND	1	MESA	170.45		168.1		Analog	
TACTICAL	4	VCALL10	155.7525		155.7525	156.7	Analog	
AIR TO GROUND	8	A/G Primary	169.2000		169.2000		Analog	
<b>9. Prepared By (Resource Unit Leader)</b>				<b>Approved By (Planning Section Chief)</b>		<b>Date</b>		<b>Time</b>
Carol O'Bryan / Melonie Sellers				Dave Berens		04/21/18		2000

## Division/Group Assignment List (ICS 204 WF)

<b>1. Incident Name:</b>				<b>3.</b>			
34 Complex				<b>Branch:</b>		<b>Division/Group:</b>	
<b>2. Operational Period: 0800-2000</b>				<b>D</b>			
Date/Time From: 04/22/18 0800		Date/Time To: 04/22/18 2000					
<b>4. Operations Personnel</b>							
<b>AIR ATTACK SUPERVISOR</b>		Tony Defalco 4/28 Joel Lane		<b>FIELD OPERATIONS</b>		Jeff Schardt 4/28 Dan Martin (t) 4/28	
<b>DIVISION/GROUP SUPERVISOR</b>		Greg Salansky 4/28 Jared Nobles (t) 4/28		<b>PLANNING OPERATIONS</b>		Ron Bertsh 4/28 Shawn Nagle (t) 4/26	
<b>5. Resources Assigned this Period</b>							
Strike Team / Task Force / Resource Designator		LWD	Leader	Number Persons	Drop Off PT./Time	Pick Up PT./Time	
TFLD	O-28	4/28	Max Twombly	1	0800	2000	
ENG T4	Utah Fire 14 E-15	4/30	Israel Justice	3	0800	2000	
SOF2		4/28	Mark Sullivan	1	0800	2000	
EMPF		4/29	Matt Jones O-34	1	0800	2000	
<b>6. Control Operations/Work Assignments:</b>							
<b>Task:</b>							
<ul style="list-style-type: none"> <li>• Mop up and cold trail 1 chain in from perimeter of fire.</li> </ul>							
<b>Purpose:</b>							
<ul style="list-style-type: none"> <li>• Keep fire within current perimeter</li> </ul>							
<b>End State:</b>							
<ul style="list-style-type: none"> <li>• No lateral spread of fire, one chain mop up completed, and has not grown in size for one operational period.</li> </ul>							
<b>7. Special Instructions:</b>							
<ul style="list-style-type: none"> <li>• Establish and maintain LCES on 34 Complex and emerging fires.</li> <li>• Document any damage or burned structures / infrastructure with a lat/long and photo</li> <li>• Stay clear and capture any lat/long of any hazmat situation and notify immediate supervisor</li> </ul>							
<b>8. Division/Group Communication Summary</b>							
Function	Channel	Channel Name	RX Frequency N/W	RX Tone/NAC	TX Frequency N/W	TX Tone/NAC	Mode
COMMAND	1	MESA	170.45		168.1		Analog
TACTICAL	6	VTAC 13	158.7375		158.7375	156.7	Analog
AIR TO GROUND	8	A/G Primary	169.2000		169.2000		Analog
<b>9. Prepared By (Resource Unit Leader)</b>			<b>Approved By (Planning Section Chief)</b>			<b>Date</b>	<b>Time</b>
Carol O'Bryan / Melonie Sellers			Dave Berens			04/21/18	2000

## Division/Group Assignment List (ICS 204 WF)

<b>1. Incident Name:</b>				<b>3.</b>					
<h1>34 Complex</h1>				<b>Branch:</b>		<b>Division/Group:</b>  <h1 style="text-align: center;">G</h1>			
<b>2. Operational Period: 0800 - 2000</b>									
Date/Time From: 04/22/18 0800		Date/Time To: 04/22/18 2000							
<b>4. Operations Personnel</b>									
<b>AIR ATTACK SUPERVISOR</b>		Tony Defalco Joel Lane		4/28		<b>FIELD OPERATIONS</b>			
						Jeff Schardt Dan Martin (t)			
<b>DIVISION/GROUP SUPERVISOR</b>		Matt Johnson		4/28		<b>PLANNING OPERATIONS</b>			
						Ron Bertsh Shawn Nagle (t)			
<b>5. Resources Assigned this Period</b>									
Strike Team / Task Force / Resource Designator			LWD	Leader		Number Persons	Drop Off PT./Time	Pick Up PT./Time	
TFLD O-27			4/28	James Wettstaed		1	0800	2000	
HC2IA FL ST #1 Squad 1 C-4			5/03	Jason Foshee		10	0800	2000	
ENG T4 Dragon Fighters E-14			4/30	Matt Helgeson		3	0800	2000	
EMPF			4/29	Eddy Rowell O-31		1	0800	2000	
SOF2			4/29	Mark Sullivan		1	0800	2000	
<b>6. Control Operations/Work Assignments:</b>									
<b>Task:</b>									
<ul style="list-style-type: none"> <li>Mop up and cold trail 1 chain in from perimeter of fire.</li> </ul>									
<b>Purpose:</b>									
<ul style="list-style-type: none"> <li>Keep fire within current perimeter</li> </ul>									
<b>End State:</b>									
<ul style="list-style-type: none"> <li>No lateral spread of fire, one chain mop up completed, and has not grown in size for one operational period.</li> </ul>									
<b>7. Special Instructions:</b>									
<ul style="list-style-type: none"> <li>Establish and maintain LCES on 34 Complex and emerging fires.</li> <li>Document any damage or burned structures / infrastructure with a lat/long and photo</li> <li>Stay clear and capture any lat/long of any hazmat situation and notify immediate supervisor</li> </ul>									
<b>8. Division/Group Communication Summary</b>									
Function	Channel	Channel Name	RX Frequency N/W	RX Tone/NAC	TX Frequency N/W	TX Tone/NAC	Mode		
COMMAND	1	MESA	170.45		168.1		Analog		
COMMAND	2	BRY SIN	169.375		164.7125		Analog		
TACTICAL	7	VTAC 14	159.4725		159.4725	156.7	Analog		
AIR TO GROUND	8	A/G Primary	169.2000		169.2000		Analog		
<b>9. Prepared By (Resource Unit Leader)</b>			<b>Approved By (Planning Section Chief)</b>			<b>Date</b>		<b>Time</b>	
Carol O'Bryan / Melonie Sellers			Dave Berens			04/21/18		2000	



## Division/Group Assignment List (ICS 204 WF)

<b>1. Incident Name:</b>				<b>3.</b>			
<h1>34 Complex</h1>				<b>Branch:</b>		<b>Division/Group:</b>  <h1 style="text-align: center;">J</h1>	
<b>2. Operational Period: 0800 - 2000</b>							
Date/Time From: 04/22/18 0800		Date/Time To: 04/22/18 2000					
<b>4. Operations Personnel</b>							
<b>AIR ATTACK SUPERVISOR</b>		Tony Defalco 4/28 Joel Lane		<b>FIELD OPERATIONS</b>		Jeff Schardt 4/28 Dan Martin (t) 4/28	
<b>DIVISION/GROUP SUPERVISOR</b>		Tom Crews 4/28		<b>PLANNING OPERATIONS</b>		Ron Bertsh 4/28 Shawn Nagle (t) 4/26	
<b>5. Resources Assigned this Period</b>							
Strike Team / Task Force / Resource Designator		LWD	Leader	Number Persons	Drop Off PT./Time	Pick Up PT./Time	
TFLD O-30		4/27	Tony Collins	1	0800	2000	
HC2IA FL ST #1 Squad 2		C-4 5/03	Randy Tharp	10	0800	2000	
ENG T6 Griffith		E-4 4/30	William Griffith	3	0800	2000	
SOF2		4/30	Randy Miller	1	0800	2000	
<b>6. Control Operations/Work Assignments:</b>							
<b>Task:</b>							
<ul style="list-style-type: none"> <li>Mop up and cold trail 1 chain in from perimeter of fire.</li> </ul>							
<b>Purpose:</b>							
<ul style="list-style-type: none"> <li>Keep fire within current perimeter</li> </ul>							
<b>End State:</b>							
<ul style="list-style-type: none"> <li>No lateral spread of fire, one chain mop up completed, and has not grown in size for one operational period.</li> </ul>							
<b>7. Special Instructions:</b>							
<ul style="list-style-type: none"> <li>Establish and maintain LCES on 34 Complex and emerging fires.</li> <li>Document any damage or burned structures / infrastructure with a lat/long and photo</li> <li>Stay clear and capture any lat/long of any hazmat situation and notify immediate supervisor</li> </ul>							
<b>8. Division/Group Communication Summary</b>							
Function	Channel	Channel Name	RX Frequency N/W	RX Tone/NAC	TX Frequency N/W	TX Tone/NAC	Mode
COMMAND	1	MESA	170.45		168.1		Analog
COMMAND	3	FT SUPPLY	159.39		151.28	94.8	Analog
TACTICAL	5	VTAC 11	151.1375		151.1375	156.7	Analog
AIR TO GROUND	8	A/G Primary	169.2000		169.2000		Analog
<b>9. Prepared By (Resource Unit Leader)</b> Carol O'Bryan / Melonie Sellers			<b>Approved By (Planning Section Chief)</b> Dave Berens		<b>Date</b> 04/21/18		<b>Time</b> 2000

### Division/Group Assignment List (ICS 204 WF)

<b>1. Incident Name:</b>			<b>3.</b>					
<h1>34 Complex</h1>			<b>Branch:</b>		<b>Division/Group:</b> <h1>Structure Protection</h1>			
<b>2. Operational Period: 0800 - 2000</b>								
Date/Time From: 04/22/18 0800		Date/Time To: 04/22/18 2000						
<b>4. Operations Personnel</b>								
<b>AIR ATTACK SUPERVISOR</b>		Tony Delfalco 4/28 Joel Lane		<b>FIELD OPERATIONS</b>		Jeff Schardt 4/28 Dan Martin (t) 4/28		
<b>DIVISION/GROUP SUPERVISOR</b>		Randy Jones 4/28 Jason Klawinsky (t) 4/28		<b>PLANNING OPERATIONS</b>		Ron Bertsh 4/28 Shawn Nagle (t) 4/26		
<b>5. Resources Assigned this Period</b>								
Strike Team / Task Force / Resource Designator	LWD	Leader	Number Persons	Drop Off PT./Time	Pick Up PT./Time			
<b>6. Control Operations/Work Assignments:</b>								
<b>Task:</b>								
<ul style="list-style-type: none"> <li>Assess and plan for structure protection.</li> </ul>								
<b>Purpose:</b>								
<ul style="list-style-type: none"> <li>Identify and capture tactical measures to mitigate any threats to infrastructure.</li> </ul>								
<b>End State:</b>								
<ul style="list-style-type: none"> <li>Contingency plan for structure protection.</li> </ul>								
<b>7. Special Instructions:</b>								
<ul style="list-style-type: none"> <li>Establish and maintain LCES on 34 Complex and emerging fires.</li> <li>Document any damage or burned structures / infrastructure with a lat/long and photo</li> <li>Stay clear and capture any lat/long of any hazmat situation and notify immediate supervisor</li> </ul>								
<b>8. Division/Group Communication Summary</b>								
Function	Channel	Channel Name	RX Frequency N/W	RX Tone/NAC	TX Frequency N/W	TX Tone/NAC	Mode	
COMMAND	1	MESA	170.45		168.1		Analog	
TACTICAL	5	VTAC 11	151.1375		151.1375	156.7	Analog	
AIR TO GROUND	8	A/G Primary	169.2000		169.2000		Analog	
<b>9. Prepared By (Resource Unit Leader)</b>			<b>Approved By (Planning Section Chief)</b>			<b>Date</b>	<b>Time</b>	
Carol O'Bryan / Melonie Sellers			Dave Berens			04/21/18	2000	

## Division/Group Assignment List (ICS 204 WF)

<b>1. Incident Name:</b>			<b>3.</b>				
<b>34 Complex</b>			<b>Branch:</b>		<b>Division/Group:</b>		
<b>2. Operational Period:</b> <b>0800 - 2000</b>					<b>Initial Attack #1</b>		
Date/Time From: 04/22/18    0800		Date/Time To: 04/22/18    2000					
<b>4. Operations Personnel</b>							
<b>AIR ATTACK SUPERVISOR</b>		Tony Delfalco Joel Lane		<b>4/28</b>		<b>FIELD OPERATIONS</b>	
						Jeff Schardt                      4/28 Dan Martin (t)                      4/28	
<b>DIVISION/GROUP SUPERVISOR</b>		Heath Thomas Mike Brod (t)		<b>4/28</b> <b>4/29</b>		<b>PLANNING OPERATIONS</b>	
						Ron Bertsh                              4/28 Shawn Nagle (t)                      4/26	
<b>5. Resources Assigned this Period</b>							
Strike Team / Task Force / Resource Designator		LWD	Leader		Number Persons	Drop Off PT./Time	Pick Up PT./Time
TFLD                      O-54		5/03	James Yacomb		1	0800	2000
ENG T4 BLM                      E-12		4/30	Laif Morrison		3	0800	2000
ENG T4 Heat Seeker 18                      E-13		4/30	Dustin Johnson		3	0800	2000
ENG T4 Madison                      E-58		5/03	Ellis Johnston		3	0800	2000
HEQB                      O-58		5/03	Darren Cluff		1	0800	2000
HEQB (t)                      O-60		5/03	Austin Sewell		1	0800	2000
DOZ T2 Cornelius Farms                      E-28		5/03	Alex Cornelius		1	0800	2000
DOZ T2 Rock ,Snow & Fire                      E-26		5/05	Anthony Clement		2	0800	2000
WT T2 Tipton & Young                      E-51		5/03	Tony Tipton		1	0800	0800
EMPF		4/29	John Dunzweiler                      O-32		1	0800	2000
SOF2		4/29	Buddy Kelley		1	0800	2000
<b>6. Control Operations/Work Assignments:</b>							
<b>Task:</b>							
<ul style="list-style-type: none"> <li>• Provide for assistance to requests for initial attack by Oklahoma Forestry Services and cooperators.</li> </ul>							
<b>Purpose:</b>							
<ul style="list-style-type: none"> <li>• To support local IA capabilities.</li> </ul>							
<b>End State:</b>							
<ul style="list-style-type: none"> <li>• IA fires after establishing LCES and command structures and contain fire where and only when safe to do so.</li> </ul>							
<b>7. Special Instructions:</b>							
<ul style="list-style-type: none"> <li>• Establish and maintain LCES on 34 Complex and emerging fires.</li> <li>• Stay clear and capture any lat/long of any hazmat situation and notify immediate supervisor.</li> </ul>							
<b>8. Division/Group Communication Summary</b>							
Function	Channel	Channel Name	RX Frequency N/W	RX Tone/NAC	TX Frequency N/W	TX Tone/NAC	Mode
COMMAND	1	MESA	170.45		168.1		Analog
TACTICAL	6	VTAC 13	158.7375		158.7375	156.7	Analog
AIR TO GROUND	9	VTAC 12	154.4525		154.4525	156.7	Analog
<b>9. Prepared By (Resource Unit Leader)</b>			<b>Approved By (Planning Section Chief)</b>			<b>Date</b>	<b>Time</b>
Carol O'Bryan / Melonie Sellers			Dave Berens			04/21/18	2000

## Division/Group Assignment List (ICS 204 WF)

<b>1. Incident Name:</b>				<b>3.</b>			
<b>34 Complex</b>				<b>Branch:</b>		<b>Division/Group:</b>	
<b>2. Operational Period: 0800 - 2000</b>						<b>Initial Attack #2</b>	
Date/Time From: 04/22/18 0800		Date/Time To: 04/22/18 2000					
<b>4. Operations Personnel</b>							
<b>AIR ATTACK SUPERVISOR</b>		Tony Delfalco 4/28 Joel Lane		<b>FIELD OPERATIONS</b>		Jeff Schardt 4/28 Dan Martin (t) 4/28	
<b>DIVISION/GROUP SUPERVISOR</b>		Hans Rudolf 5/03		<b>PLANNING OPERATIONS</b>		Ron Bertsh 4/28 Shawn Nagle (t) 4/26	
<b>5. Resources Assigned this Period</b>							
Strike Team / Task Force / Resource Designator		LWD	Leader	Number Persons	Drop Off PT./Time	Pick Up PT./Time	
ENG T3 Tonto E-54		5/04	Adam Giordano	5	0800	2000	
ENG T3 Pinedale E-55		5/04	Jason Carven	4	0800	2000	
ENG T3 American Wildfire E-56		5/04	Jeff Stanovich	3	0800	2000	
HEQB O-61		5/03	James Johnston	1	0800	2000	
HEQB (t) O-59		5/03	Gabriel Cluff	1	0800	2000	
DZ T2 E-25		5/03	Penderland	3	0800	2000	
WT2 Home Style Water E-52		5/04	Brian Duran	1	0800	2000	
<b>6. Control Operations/Work Assignments:</b>							
<b>Task:</b>							
<ul style="list-style-type: none"> <li>Provide for assistance to requests for initial attack by Oklahoma Forestry Services and cooperators.</li> </ul>							
<b>Purpose:</b>							
<ul style="list-style-type: none"> <li>To support local IA capabilities.</li> </ul>							
<b>End State:</b>							
<ul style="list-style-type: none"> <li>IA fires after establishing LCES and command structures and contain fire where and only when safe to do so.</li> </ul>							
<b>7. Special Instructions:</b>							
<ul style="list-style-type: none"> <li>Establish and maintain LCES on 34 Complex and emerging fires.</li> <li>Stay clear and capture any lat/long of any hazmat situation and notify immediate supervisor</li> </ul>							
<b>8. Division/Group Communication Summary</b>							
Function	Channel	Channel Name	RX Frequency N/W	RX Tone/NAC	TX Frequency N/W	TX Tone/NAC	Mode
COMMAND	1	MESA	170.45		168.1		Analog
TACTICAL	7	VTAC 14	159.4725		159.4725	156.7	Analog
AIR TO GROUND	9	VTAC 12	154.4525		154.4525	156.7	Analog
<b>9. Prepared By (Resource Unit Leader)</b>			<b>Approved By (Planning Section Chief)</b>			<b>Date</b>	<b>Time</b>
Carol O'Bryan / Melonie Sellers			Dave Berens			04/21/18	2000

## Division/Group Assignment List (ICS 204 WF)

<b>1. Incident Name:</b>			<b>3.</b>				
<b>34 Complex</b>			<b>Branch:</b>		<b>Division/Group:</b>		
<b>2. Operational Period: 0800 - 2000</b>					<b>Initial Attack #3</b>		
Date/Time From: 04/22/18 0800		Date/Time To: 04/22/18 2000					
<b>4. Operations Personnel</b>							
<b>AIR ATTACK SUPERVISOR</b>		Tony Delfalco 4/28 Joel Lane		<b>FIELD OPERATIONS</b>		Jeff Schardt 4/28 Dan Martin (t) 4/28	
<b>DIVISION/GROUP SUPERVISOR</b>		Jerry Anderson 4/28 Dennis Gaston (t) 4/29		<b>PLANNING OPERATIONS</b>		Ron Bertsh 4/28 Shawn Nagle (t) 4/26	
<b>5. Resources Assigned this Period</b>							
Strike Team / Task Force / Resource Designator		LWD	Leader		Number Persons	Drop Off PT./Time	Pick Up PT./Time
ENG T3 ** Truckee Meadows ** E-71		4/29	Ryan Rizzuto		4	0800	2000
ENG T4 **Heat Seeker 17 ** E-59		5/05	Adrian Paz		3	0800	2000
ENG T4 BLM-ID 3471 E-57		5/04	Mickey Fearn		6	0800	2000
ENG T6 **Scholl Fire & Fuels** E-10		4/29	Eric Pritchard		3	0800	2000
ENG T6 Wheeler 86 E-60		5/04	Carson Jones		2	0800	2000
ENG T6 McDuffie 86 E-61		5/04	Rob Moore		2	0800	2000
ENG T6 Berrien 86 E-62		5/04	Jason Gillis		2	0800	2000
ENG T6 BLM-ID 3694 E-63		5/04	Dylan Estep		5	0800	2000
DZ T2 Tipton & Young E-27		5/04	Aaron Tipton		1	0800	2000
WT3 Home Style Water E-50		5/04	Johnny Castillo		1	0800	2000
<b>6. Control Operations/Work Assignments:</b>							
<b>Task:</b>							
<ul style="list-style-type: none"> <li>Provide for assistance to requests for initial attack by Oklahoma Forestry Services and cooperators.</li> </ul>							
<b>Purpose:</b>							
<ul style="list-style-type: none"> <li>To support local IA capabilities.</li> </ul>							
<b>End State:</b>							
<ul style="list-style-type: none"> <li>IA fires after establishing LCES and command structures and contain fire where and only when safe to do so.</li> </ul>							
<b>7. Special Instructions:</b>							
<ul style="list-style-type: none"> <li>Establish and maintain LCES on 34 Complex and emerging fires.</li> <li>Stay clear and capture any lat/long of any hazmat situation and notify immediate supervisor.</li> </ul> <p>Resources identified with ** are transitioning from night shift into day shift. Resources will return to duty 4/22/08 at 1600</p>							
<b>8. Division/Group Communication Summary</b>							
Function	Channel	Channel Name	RX Frequency N/W	RX Tone/NAC	TX Frequency N/W	TX Tone/NAC	Mode
COMMAND	1	MESA	170.45		168.1		Analog
TACTICAL	4	VCALL 10	155.7525		155.7525	156.7	Analog
AIR TO GROUND	9	VTAC 12	154.4525		154.4525	156.7	Analog
<b>9. Prepared By (Resource Unit Leader)</b>			<b>Approved By (Planning Section Chief)</b>			<b>Date</b>	<b>Time</b>
Carol O'Bryan / Melonie Sellers			Dave Berens			04/21/18	2000

## Division/Group Assignment List (ICS 204 WF)

<b>1. Incident Name:</b>				<b>3.</b>			
<b>34 Complex</b>				<b>Branch:</b>		<b>Division/Group:</b>	
<b>2. Operational Period: 0800 - 2000</b>						<b>Rhea Fire</b>	
Date/Time From: 04/22/18 0800		Date/Time To: 04/22/18 2000					
<b>4. Operations Personnel</b>							
<b>AIR ATTACK SUPERVISOR</b>			<b>FIELD OPERATIONS</b>				
<b>DIVISION/GROUP SUPERVISOR</b>			<b>PLANNING OPERATIONS</b>				
<b>5. Resources Assigned this Period</b>							
Strike Team / Task Force / Resource Designator		LWD	Leader		Number Persons	Drop Off PT./Time	Pick Up PT./Time
TFLD O-57		5/01	Josh Hernandez		1	0800	2000
HC2IA Pat-Rick C-6		5/03	Randy Teel		20	0800	2000
ENG T3 Lefthand E-17		4/28	Melissa Friess		3	0800	2000
ENG T6 Pat-Rick B56463 E-5		4/29	Benjamin Castle		2	0800	2000
ENG T6 Pat-Rick C44474 E-8		4/29	Charles Perkins		2	0800	2000
ENG T6 Don Crane E-3		4/29	Don Crane		2	0800	2000
ENG T6 MSNXR E-7		4/30	Waymon Fondren		3	0800	2000
ENG T6 Attack One E-9		4/30	David Knowles		3	0800	2000
<b>6. Control Operations/Work Assignments:</b>							
<b>Task:</b>							
<ul style="list-style-type: none"> <li>• Provide resources to the Rhea Fire</li> </ul>							
<b>Purpose:</b>							
<ul style="list-style-type: none"> <li>• To implement collaborative sharing of resources</li> </ul>							
<b>End State:</b>							
<ul style="list-style-type: none"> <li>• Resources will be utilized for wildland fire operations at the Rhea Fire.</li> </ul>							
<b>7. Special Instructions:</b>							
<ul style="list-style-type: none"> <li>• Travel to Taloga for briefing at 0800 to receive operational assignments .</li> <li>• See Rhea Fire Communications Plan for radio frequencies.</li> </ul> <p style="text-align: center;"><b>*** Taloga Briefing Location***</b>  <b>698 West Ruble Ave</b>  <b>Taloga, OK</b></p>							
<b>8. Division/Group Communication Summary</b>							
Function	Channel	Channel Name	RX Frequency N/W	RX Tone/NAC	TX Frequency N/W	TX Tone/NAC	Mode
COMMAND							
TACTICAL							
AIR TO GROUND							
<b>9. Prepared By (Resource Unit Leader)</b>				<b>Approved By (Planning Section Chief)</b>		<b>Date</b>	<b>Time</b>
Carol O'Bryan / Melonie Sellers				Dave Berens		04/21/18	2000

# AIR OPERATIONS SUMMARY

OPERATIONAL PERIOD DATE: **04-22-2018**

0800-2000

<b>1. INCIDENT NAME:</b> 34 Complex	<b>2. PREPARED BY:</b> Bruce Wicks <b>PREPARED DATE/TIME:</b> 04/21/2018 1835	<b>3. Sunrise:</b> 0655 <b>Sunset:</b> 2018
<b>4. REMARKS (Safety Notes, Hazards, Air Operations Special Equipment., etc.):</b> Medivac Aircraft: <b>Air Evac</b> Do not over fly structures with external load missions.  All aircraft will use strobes and running lights in smoky conditions. Hazards: Snags, non-incident aircraft, and winds. <u>Squawk 1255</u> <u>Cease all operations at sunset</u>		5.

6. PERSONNEL	Phone	7. FREQUENCIES	AM	FM	8. FIXED WING	FAA#/Base
AOBD---Bruce Wicks ASGS---Pete Kubiak	530-906-2224 404-661-4819	Air/Air Rotor Air/Air Fixed Wing	118.9250 119.9500			Air Attack  AC 690 N848CE – AVK  Air Attack AC 500B – N112AA – AVK
ATGS: Joel Lane – 8CE ATGS: Tony DeFalco – 0FT	530-277-9261 702-592-9215	Air/Ground Primary Air/Ground For IA (VTAC 12)		169.2000  154.4525 TX 156.7		
<u>Woodward Helibase (WWR)</u> HEB2 John Bragg	423-483-2798	National Flight Following		168.650 TX 110.9		
HMGB 612CK J.R. Sullivan	210-396-3304					
HMGB 135BH Billy Groves	406-407-1521					
		Air/Guard		168.6250 RX/TX Tone 110.9		
		Deck		163.100		

**9. HELICOPTERS (Use Additional Sheets As Necessary)**

FAA N# or Designator	TY	MAKE/MODEL	BASE	START	REMARKS	FAA N# or Designator	TY	MAKE/MODEL	BASE	START	REMARKS
612 CK	1	SH3H	WWR	0930	State resource						
135BH	1	S-70	WWR	0930	State resource						

TYPE/FUNCTION	NAME OF PERSONNEL OR CARGO (if applicable) OR INSTRUCTIONS FOR TACTICAL AIRCRAFT	MISSION START	FLY FROM	FLY TO
Water Drops	As Requested	0930	Woodward HB	Fire

## HEALTH AND SAFETY MESSAGE

*SAFETY* starts with *YOU*

We are ALL accountable for SAFE behaviors

INCIDENT: 34 Complex

DATE: Sunday April 22, 2018

### **Major Hazards and Risks:**

**Transportation** -- Driving will continue to be one of the major hazards. Roads may still be slick, especially dirt roads. Slow down if roads are still wet or muddy. Always practice defensive driving, today is Sunday. Be aware of traffic, children and their parents around churches. Make sure everyone is wearing a **seat belt** and drive with lights on. Use caution at Railroad Crossings. . **Minimize distractions.**

**Soft Ground** – There will probably be some new holes and soft ground created by the rainfall. Slow down and expect holes, some of which may be camouflaged by mud, water, or debris. Watch your footing when walking fire lines. Rain can cause slick limbs and roots, too. Be very careful and watch for exposed objects.

**Gas, Oil, and Water wells** -- Numerous sites, exposed and covered pipe lines, and wind mills are inside fire perimeter. Windsock marked areas may indicate presence of highly toxic gases Stay upwind of these.

**Mopup** -- **Pay attention to the small details concerning hazard around you** (Hazard trees, footing, eye care/goggles, lifting, PPE). Small injuries may lead to major problems.

**Initial Attack**—Always follow LCES and the protocols for Risk Management listed on page 1 of the IRPG.



### **STANDARD FIREFIGHTING ORDERS**

1. Keep informed on fire weather conditions and forecasts.
2. Know what your fire is doing at all times.
3. Base all actions on current and expected behavior of the fire.
4. Identify escape routes and safety zones, and make them known.
5. Post lookouts when there is possible danger
6. Be alert. Keep calm. Think clearly. Act decisively.
7. Maintain prompt communications with your forces, supervisor, and adjoining forces.
- 8. Give clear instructions and be sure they are understood.**
9. Maintain control of your forces at all times.
10. Fight fire aggressively, having provided for safety first,

Safety Officers: Larry Holsomback, Mark Sullivan, Buddy Kelley and Randy Miller.



## INCIDENT SAFETY ANALYSIS 215a

34 Complex - Sunday, April 22, 2018

8. Location	9. Hazard	6. Control or Abatement Action (Engineering, Administrative, PPE, Avoidance, Education, etc)
All	Power Utilities	<ul style="list-style-type: none"> <li>~ Notify all personnel of down electrical lines</li> <li>~ Always treat downed wires as energized.</li> <li>~ Identify and avoid high pressure natural gas lines.</li> <li>~ Be aware of utility restoration in your work area.</li> </ul>
All	Extreme Fire Behavior	<ul style="list-style-type: none"> <li>~ Share weather observations with all personnel assigned to division.</li> <li>~ Establish "Trigger Points" to withdraw.</li> <li>~ Use "Risk Management" process prior to engaging in suppression actions, refer to page 1, IRPG.</li> <li>~ Establish and follow LCES at all times</li> </ul>
All	Air Operations	<ul style="list-style-type: none"> <li>~ Follow "Aviation Watch-Out Situations" on page 44, IRPG.</li> <li>~ Don't plan on air resources for medical transport or resupply.</li> <li>~ Refer to page 57, IRPG for directing bucket drops.</li> <li>~ Ensure positive communication with all air resources.</li> </ul>
All	Driving & Traffic	<ul style="list-style-type: none"> <li>~ Practice "Defensive Driving" techniques traveling on all roads and city streets.</li> <li>~ Watch for School Zone</li> <li>~ Observe posted speed limits.</li> <li>~ Avoid distractions (eating, cell phones, radio).</li> <li>~ Ensure that windshields are kept clean of dust and bugs.</li> </ul>
All	Hazard Trees	<ul style="list-style-type: none"> <li>~ Follow "Hazard Tree Safety" guidelines, IRPG page 22.</li> <li>~ Mitigate hazards by flagging off or removing dangerous snags.</li> <li>~ In areas that work must be performed use a spotter in mop-up areas with personnel.</li> <li>~ Don't park vehicles or take breaks in high concentrations of hazard trees.</li> <li>~ Remember that the hazard zone extends a minimum of 2 1/2 tree heights.</li> </ul>
All	Oil & Gas Lines	<ul style="list-style-type: none"> <li>~ Identify sites, Wind Socks indicate presence of Highly Toxic Gases, Stay up Wind.</li> <li>~ Do not depend on sense of smell for warning.</li> <li>~ Park at least 50 feet away from facilities and equipment.</li> <li>~ Avoid low lying areas during stagnant air conditions.</li> <li>~ Be Aware of exposed or shallow buried pipes and utilities.</li> </ul>
All	Injury & Medical Emergency	<ul style="list-style-type: none"> <li>~ Assist injured employee appropriate medical care.</li> <li>~ Use EMT's on Division for initial care.</li> <li>~ Follow medical protocol as outlined in ICS-206 WF &amp; IRPG Pgs 99-108</li> </ul>
IA	Heavy Equipment Operations	<ul style="list-style-type: none"> <li>~ Ensure communications are established with operators.</li> <li>~ Use hand signals if other communications are unavailable.</li> <li>~ Maintain a 50'-100' exclusion area around equipment and increase it to 1 1/2 times tree height when in timber.</li> <li>~ Use a spotter when backing.</li> <li>~ Avoid working below heavy equipment.</li> <li>~ Assess road surface for wet or slick conditions to avoid accidents or resource damage</li> </ul>
All	Communications	<ul style="list-style-type: none"> <li>~ Maintain communication with aviation resources, and suppression organization.</li> <li>~ Ensure all know frequency and protocol for contacting resources.</li> <li>~ Utilize the ICS 205.</li> <li>~ Utilize human repeaters when working in dead spots.</li> </ul>
All	Structure Protection & HAZMAT	<ul style="list-style-type: none"> <li>~ Review "Wildland Urban Interface" Watch outs, IRPG page 12.</li> <li>~ Use "Structure Assessment" checklist, IRPG pages 12-16.</li> <li>~ Follow "HAZMAT Incident Operations" on pages 34-36 in IRPG.</li> </ul>
All	Wildlife & Livestock	<ul style="list-style-type: none"> <li>~ Watch out for wildlife &amp; livestock inside fire area and along roadways.</li> <li>~ Clean up all debris and trash during each operational period.</li> </ul>

<b>MEDICAL PLAN</b>	1. Incident Name 34 Complex	2. Date Prepared <b>04/21/18</b>	3. Time Prepared 1830	4. Operational Period <b>4/22/18 0800 - 2000</b>				
<b>5. Incident Medical Aid Station</b>								
Medical Aid Stations	Location		Paramedics Yes No					
Jeff Cummings EMTF	317-730-6653	ICP 108 Temple Houston Dr, Woodward, Ok		X				
Patrick Horan EMPF	303-641-1137	Division A		X				
Wilson Rowell EMPF	334-504-2608	Division G		X				
John Dunzweiler EMPF	606-594-1627	Division J		X				
Matt Jones EMPF	360-824-1360	Division D		X				
<b>6. Transportation</b>								
<b>A. Air Ambulance Services</b>								
Name	Address	Phone	Paramedics Yes No Tail Number					
Air Evac Life Team Bell 206	1620 Santa Fe, Woodward, OK 73801	<b>1-800-247-3822</b>	X	<b>N130AE</b>				
<b>(NO wind gust spread exceeding 18mph)</b>	<b>(NO winds over 45mph)</b>							
<b>B. Incident Ambulances</b>								
Name	Location	Paramedics Yes No Call Sign						
Woodward County EMS	ICP 108 Temple Houston Dr, Woodward, OK <b>(0800 - 2100)</b>	X	S-43					
Alex Martinez EMTB	<b>580-216-7938</b>		X					
Marty Graham EMT	<b>580 -216-0081</b>	X						
<b>7. Hospitals</b>								
Name	Address	Travel Time Air Ground		Phone	Helipad Yes No	Burn Center Yes No		
Mercy Hospital	700 NE 13th, Lincoln Ave, OKC Level 1 Trauma	60 min	120m	405-271-4700	X		X	
Integrus Baptist Medical Center	3300 NW EXPY OKC Burn Center/Level 3	60 min	120m	405-949-3011	X	X		
St. Mary's Regional	305 S. 5th Enid, OK Trauma/Level 3	30 min	90 min	580-233-6100	X		X	
Integrus Bass	600 S. Monroe, Enid, OK Cardiac/Level 3	30 min	90 min	580-233-2300	X		X	
Alliance Health Woodward	1620 Santa Fe, Woodward, OK General/Level 3	15 min	20 min	877-863-9595	X		X	
** Note: Air transport times are from the incident to the hospital only. Does not include flight time to the incident **								
<b>8. Medical Emergency Procedures</b>								
<ol style="list-style-type: none"> <li>1. Patient or nearest responder will notify Supervisor of the injury.</li> <li>2. The Supervisor will become the Incident-Within-the Incident Commander (IWI).</li> <li>3. IWI Commander will notify the nearest medical responder and ICP communications of the Incident</li> <li>4. IWI Commander will initiate the Nine Line Medical Incident Report attached to the 206 Form</li> </ol>								
Prepared by (Medical Unit Leader) John Dunzweiler MEDL (t) / Jeff Cummings MEDL					10. Reviewed by (Safety Officer) Larry Holsomback, SOF2			

<b>INCIDENT RADIO COMMUNICATIONS PLAN</b>			1. Incident Name <b>34 COMPLEX</b>			2. Date Time Prepared <b>04/21/2018 1730</b>		3. Operational Period Date/Time <b>04/22/2018 0800-2000</b>	
<b>4. Basic Radio Channel Utilization</b> Mode: W= Wideband, N= Narrowband, D= Digital, M= Mixed									
CHAN NAME	CH #	Function	Frequency	Tone/NAC	Mode	TX	Assignment	Remarks	
MESA	1	COMMAND	RX: 170.4500		Analog		ALL DIVISIONS	MESA and BRY SIN LINKED	
			TX: 168.1000						
BRY SIN	2	COMMAND	RX: 169.3750		Analog		G and Southern Area		
			TX: 164.7125						
FT SUPPLY	3	COMMAND	RX: 159.3900		Analog		DIVISION J		
			TX: 151.2800	94.8					
VCALL 10	4	TAC	RX: 155.7525		Analog		A, INITIAL ATTACK 3		
			TX: 155.7525	156.7					
VTAC 11	5	TAC	RX: 151.1375		Analog		J, STRUCTURE PROTECTION		
			TX: 151.1375	156.7					
VTAC 13	6	TAC	RX: 158.7375		Analog		D, INTIAL ATTACK 1		
			TX: 158.7375	156.7					
VTAC 14	7	TAC	RX: 159.4725		Analog		G, INITIAL ATTACK 2		
			TX: 159.4725	156.7					
A/G PRI	8	A/G	RX: 169.2000		Analog				
			TX: 169.2000						
VTAC 12	9	A/G	RX: 154.4525		Analog		INITIAL ATTACK		
			TX: 154.4525	156.7					
	10		RX:		Analog				
			TX:						
	11		RX:		Analog				
			TX:						
	12		RX:		Analog				
			TX:						
	13		RX:		Analog				
			TX:						
	14		RX:		Analog				
			TX:						
	15		RX:		Analog				
			TX:						
AIR GUARD	16	AIR GUARD	RX: 168.6250		Analog				
			TX: 168.6250	110.9					
5. Prepared by (Communications Unit) TERRY BRINSON COML									

**Note: This is not a standard NWCG ICS205 Form**

## Human Resource Message

The mission of the Gold Team is to safely, effectively and efficiently manage the 34 Complex by maintaining a team of skilled and productive personnel.

During this incident we will strive to successfully complete our mission and achieve our objectives while creating a positive, drug and alcohol free work environment for all assigned incident personnel.

The Gold Team fully supports EEO and will not tolerate sexual harassment or any form of discrimination!

All inappropriate behavior will be dealt with promptly. Disciplinary action and reporting back to an individual's home unit will be initiated as necessary.

Please report any incidents of inappropriate behavior to your supervisor, Danny Bryant or myself immediately.

*Steve Parrish*, Incident Commander



## ***TRAINING SPECIALIST MESSAGE***

**Monday will be the deadline for closing out your training package on this incident.**

**All packages are due in by the end of shift Monday, April 23, 2018.**

**Regardless of home agency, in order to insure incident documentation of any training assignment – You must register and close your assignment with Training Specialist.**

**Bring a *completed* individual performance rating and your taskbook to the exit interview.**

**Thank you**

*Diane Bolt*

*Training Specialist*

# 34 COMPLEX

## DEMOB STEPS

**Check the board in front of Check-in & DMOB!**

**Step 1. Have at least 8 hours of rest before you begin travel!**

Turn in all supplies and radios. *\*Contract equipment – clear equipment records with Ground Support.*

*\*All Trainees should be closed out with the Training Specialist.*

*\*Clear comp and claims reported through Medical and Finance.*

**Step 2.** Report to the **DEMOB** unit and pick up your **DEMOBILATION CHECKOUT** form (ICS 221).

**Step 3.** Go to Units checked on ICS 221 demob form.

**Step 4.** Turn in all documentation (*performance ratings, unit logs etc.*) to the Documentation Unit.

**Step 5.** Report to Finance and clear your personnel time and equipment time.

**Step 6.** Report to Demob Unit to sign off on ICS 221. Tell demob your Estimated Time of Arrival to home unit.

You are now ready to leave. **Drive Safely!!**

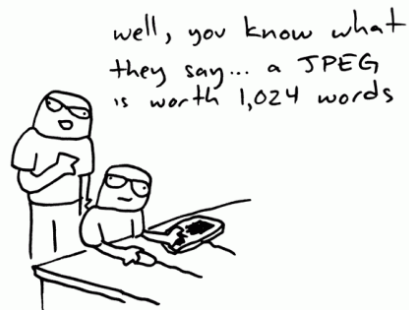


# 34 Complex Fire How to reach us!

Public Information Phone: 405-730-9107

Email: [OK34ComplexFire@gmail.com](mailto:OK34ComplexFire@gmail.com)

## WE NEED PICTURES!



Text them to: **252-423-0815** or

Email: [OK34ComplexFire@gmail.com](mailto:OK34ComplexFire@gmail.com)

REMEMBER we can NOT use photos that show folks without full PPE

AND tell us who you are, what you are doing, and where!

---

**Facebook:** [oklahomaforestryservices](https://www.facebook.com/OklahomaForestry)

[www.facebook.com/OklahomaForestry](https://www.facebook.com/OklahomaForestry)

**Twitter:** <https://twitter.com/OKForestService>

**INCIWEB:** <https://inciweb.nwcg.gov/incident/5747/>

- 
- We are all **Public Information Officers**.
  - We all represent **Oklahoma Forestry Services**.
  - We all have a story to tell.
  - We encourage you to share your story about what you do on the 34 Complex Fire with people you meet.
  - We also encourage you to help us come up with story ideas, especially during the coming rainy days. What have you seen in this community that is a story we can tell?



# 34 Complex ICP Parking







**Main Entrance**

**Restrooms**

**Public Information**

**Ground Support**

**Air Ops**  
**Safety**  
**Operations**

**Resources**

**Briefing**

**Ordering Supply Facilities Logistics**

**Check—In**  
**Demob**  
**Training**

**Finance**

**Incident Command**

**Communica-tions**

**Plans**

**Situation**

**ITSS**

**Supply**



**Medical**



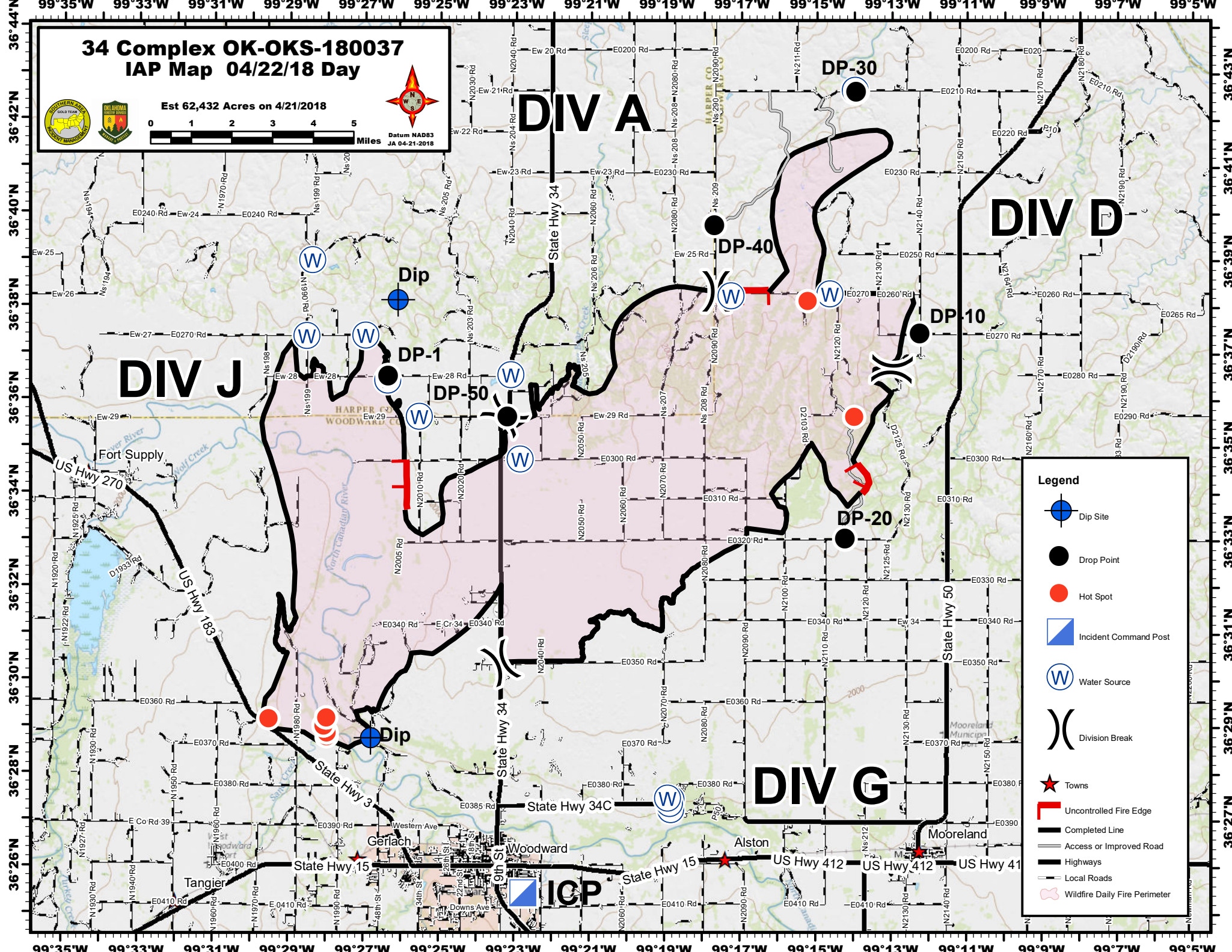
# 34 Complex OK-OKS-180037 IAP Map 04/22/18 Day



Est 62,432 Acres on 4/21/2018



Datum NAD83  
JA 04-21-2018



### Legend

- Dip Site
- Drop Point
- Hot Spot
- Incident Command Post
- Water Source
- Division Break
- Towns
- Uncontrolled Fire Edge
- Completed Line
- Access or Improved Road
- Highways
- Local Roads
- Wildfire Daily Fire Perimeter

## PHONE LIST - 34 Complex

Position	Name	Phone Number	Position	Name	Phone Number
<b>COMMAND</b>			<b>FINANACE</b>		
Incident Commander	Steve Parrish	850-524-1244	Time Unit Leader (t)	Sherise Foster	919-943-7843
Incident Commander	Danny Bryant	601-500-2505	Procurment Unit Leader	Craig Ericson	570-720-4743
Liaison Officer	Keith Lawrence	803-522-5264	Cost Unit Leader	Tom Steele	770-363-3583
Public Information	Bonnie Strawser	252-216-8667	Comp/Claims	Terri McDonald	352-454-5385
Public Information	John Nichols	501-282-9634	Comp/Claims (t)	Pamela Stamper	276-389-7477
Public Information	Adam Solt	435-201-0856	Personel Time Recorder (t)	Gustavo Vallejo	423-284-1041
Public Information (t)	Donald Simon	910-975-1895	<b>PLANNING</b>		
Safety Officer	Buddy Kelley	850-447-1344	Chief	Dave Berens	601-319-6823
Safety Officer	Mark Sullivan	205-531-7183	Resource Unit Leader	Melonie Sellers	601-508-8997
Safety Officer	Larry Holsomback	706-280-4716	Resource Unit Leader	Carol O'Bryan	903-263-8704
Safety Officer	Randy Miller	571-232-7922	Situation Unit Leader	Bill Coates	770-688-5721
<b>OPERATIONS</b>			Situation Unit Leader (t)	EJ Bunzendahl	859-556-2347
Planning Ops	Ron Bertsch	706-515-5625	Fire Behavior Analyst	Jamie Atkins	706-955-5986
Planning Ops (t)	Shawn Nagle	662-231-4024	IMET	David Shallenberger	606-481-9238
Field Ops	Jeff Schardt	706-280-5498	GISS	Chris Evans	928-273-4203
Field Ops (t)	Dan Martin	540-266-2042	GISS	Christian Vose	828-342-0512
Division A	Sean Gast	209-770-6265	GISS (t)	Joseph Harsh	662-803-1973
Division A (t)	Joe Pearlman	209-272-2132	GISS (t)	JT Allen	405-593-6226
Division D	Greg Salansky	865-414-6461	Demob	Henry Hickerson	540-798-2218
Division D (t)	Jared Nobles	352-317-6297	Check In	Angela Marcano	706-474-4026
Division G	Matt Johnson	870-415-0185	Check In (t)	Jocelyn Howell	214-934-0138
Division J	Tom Crews	252-216-6361	Training Specialist	Diane Bolt	828-553-8870
Structure Protection Group	Randy Jones	352-267-7700	Compter Tech	John Edwards	850-261-9127
Structure Protection Group (t)	Jason Klawinsky	936-520-8827	Compter Tech	Nikita Carty	305-878-9907
Initial Attack Group #1	Heath Thomas	501-208-7077	<b>LOGISTICS</b>		
Initial Attack Group #1 (t)	Mike Brod	706-212-8012	Chief	Susan Cornett	903-930-5321
Initial Attack Group #2	Hans Rudolf	541-969-0295	Chief (t)	Cameron Crisp	304-642-2035
Initial Attack Group #3	Jerry Anderson	940-210-7769	Deputy	Duane Cihlar	218-370-1662
Initial Attack Group #3 (t)	Dennis Gaston	804-840-5493	Supply Unit	Ron Zabka	603-630-4916
Rhea Group DAY	Josh Hernandez	530-414-1593	Supply Unit (t)	John Dunlap	580-216-1882
Rhea Group NIGHT	Randy Jones	352-267-7700	Facilities Unit	Gene-Paul Matson	434-665-0444
<b>AIR OPERATIONS</b>			Facilities Unit	Lodging Contact	580-216-8105
Air Operation Branch Director	Bruce Wicks	530-906-2224	Ground Support Unit Leader	Todd Waller	501-337-6308
Air Support Group Supervisor	Pete Kubiak	404-661-4819	Ground Support Unit Leader (t)	Kevin Wagner	479-243-6649
Air Tatical Group Supervisor	Tony Defalco	702-592-9215	Ordering Manager	Nina Donley	205-243-8816
Air Tatical Group Supervisor	Joel Lane	559-310-9430	Ordering Manager	Durinda Hulett	309-338-1667
Helibase Manager	John Bragg	423-483-2798	Receiving & Distribution	Chris Combs	727-992-0046
<b>FINANACE</b>			Communications	Terry Brinson	386-868-7649
Chief	Wanda Kelley	423-584-1472	Medical Unit Leader	Jeffery Cummings	317-730-6653
Chief (t)	Jennifer Cross	423-715-9025	Security Manager	Tom Neal	618-201-2111
Time Unit Leader	Jean Frick	828-361-5361			



## Medical Incident Report- "9 Line"

**FOR ALL MEDICAL EMERGENCIES: IDENTIFY ON SCENE INCIDENT COMMANDER BY NAME AND POSITION AND ANNOUNCE "MEDICAL EMERGENCY" TO INITIATE RESPONSE FROM IMT COMMUNICATIONS/DISPATCH.**

Use items one through nine to communicate situation to communications/dispatch.

**1. CONTACT COMMUNICATIONS/DISPATCH**

*Ex: "Communications, Div. Alpha. Stand-by for Priority Medical Incident Report." (If life threatening request designated frequency be cleared for emergency traffic.)*

**2. INCIDENT STATUS: Provide incident summary and command structure.**

Nature of Injury/Illness		<i>Describe the injury (Ex: Broken leg with bleeding)</i>
Incident Name		<i>Geographic Name + "Medical" (Ex: Trout Meadow Medical)</i>
Incident Commander		<i>Name of IC</i>
Patient Care		<i>Name of Care Provider (Ex: EMT Smith)</i>

**3. INITIAL PATIENT ASSESSMENT: Complete this section for each patient. This is only a brief, initial assessment. Provide additional patient info after completing this 9 Line Report.**

Number of Patients:	Male / Female	Age:	Weight:
Conscious? <input type="checkbox"/> YES <input type="checkbox"/> NO = MEDEVAC!			
Breathing? <input type="checkbox"/> YES <input type="checkbox"/> NO = MEDEVAC!			
Mechanism of Injury: <i>What caused the injury?</i>			
Lat/Long (Datum WGS84)			

**4. SEVERITY OF EMERGENCY, TRANSPORT PRIORITY**

SEVERITY	TRANSPORT PRIORITY
<input type="checkbox"/> URGENT-RED Life threatening injury or illness. <i>Ex: Unconscious, difficulty breathing, bleeding severely, 2° – 3° burns more than 4 palm sizes, heat stroke, disoriented.</i>	Ambulance or MEDEVAC helicopter. Evacuation need is IMMEDIATE.
<input type="checkbox"/> PRIORITY-YELLOW Serious Injury or illness. <i>Ex: Significant trauma, not able to walk, 2° – 3° burns not more than 1-2 palm sizes.</i>	Ambulance or consider air transport if at remote location. Evacuation may be DELAYED.
<input type="checkbox"/> ROUTINE-GREEN Not a life threatening injury or illness. <i>Ex: Sprains, strains, minor heat-related illness.</i>	Non-Emergency. Evacuation considered Routine of Convenience.

**5. TRANSPORT PLAN:**

Air Transport: (Agency Aircraft Preferred)

<input type="checkbox"/> Helispot	<input type="checkbox"/> Short-haul/Hoist	<input type="checkbox"/> Life Flight	<input type="checkbox"/> Other
Ground Transport:			
<input type="checkbox"/> Self-Extract	<input type="checkbox"/> Carry-Out	<input type="checkbox"/> Ambulance	<input type="checkbox"/> Other

**6. ADDITIONAL RESOURCE/EQUIPMENT NEEDS:**

<input type="checkbox"/> Paramedic/EMT(s)	<input type="checkbox"/> Crew(s)	<input type="checkbox"/> SKED/Backboard/C-Collar
<input type="checkbox"/> Burn Sheet(s)	<input type="checkbox"/> Oxygen	<input type="checkbox"/> Trauma Bag
<input type="checkbox"/> Medication(s)	<input type="checkbox"/> IV/Fluid(s)	<input type="checkbox"/> Cardiac Monitor/AED
<input type="checkbox"/> Other (i.e. splints, rope rescue, wheeled litter)		

**7. COMMUNICATIONS:**

Function	Channel Name/Number	Receive (Rx)	Tone/NAC *	Transmit (Tx)	Tone/NAC *
A - G	34 Complex Fire	169.200		169.200	
COMMAND	MESA	170.45		168.1	
AIR-TO-GRND	VTAC 12	154.4525	156.7	154.4525	For Aircraft without A-G

\*(NAC for digital radio system)

**8. EVACUATION LOCATION:**

Lat/Long (Datum WGS84) <i>EX: N 40 42.45' x W 123 03.24'</i>	
Patient's ETA to Evacuation Location:	
Helispot/Extraction Size and Hazards:	

**9. CONTINGENCY:**

<b>Considerations:</b> <i>If primary options fail, what actions can be implemented in conjunction with primary evacuation method? Be thinking ahead...</i>	<b>REMEMBER:</b> <b>Confirm ETA's of resources ordered Act according to your level of training Be Alert. Keep Calm. Think Clearly. Act Decisively.</b>
------------------------------------------------------------------------------------------------------------------------------------------------------------	----------------------------------------------------------------------------------------------------------------------------------------------------------------