



# Incident Action Plan Unified Command



## Day Operational Period

Monday

4/23/18

0800-2000



Woodward F.D.

**34 Complex**

OK-OKS-180037

**PNLN1P (1502)**

FF2000000LN1PO Fund 18x



QR Code for IAP &  
Maps

INCIDENT OBJECTIVES	1. Incident Name  <b>34 Complex</b>	2. Date Prepared <b>4/22/18</b>	3. Time Prepared <b>1700</b>
4. Operational Period <b>DAY 4/23/18 0800 – 2000</b>			
5. General Control Objectives For The Incident <u>Objectives for the Incident:</u> <ul style="list-style-type: none"> <li>• Ensure protection of human life as a top priority through the use of sound risk management decisions in all actions.</li> <li>• Provide for protection of private property, infrastructure, State, County and Municipal facilities by using sound suppression tactics on all initial and extended attack fires.</li> <li>• Provide training opportunities to Oklahoma Forestry Services personnel to strengthen organizational capabilities and complete training assignments.</li> <li>• Ensure sensitivity to the impacts of suppression activities to private property by fostering and maintaining relationships with appropriate agencies, elected officials, business leaders and members of the public.</li> <li>• Provide accurate information messaging through coordination between the Southern Area Gold Team and Oklahoma Forestry Services Public Information Officers.</li> </ul>			
<u>Control Objectives:</u> <ul style="list-style-type: none"> <li>• Utilize full suppression tactics to keep 34 Complex fire contained within the current footprint by utilizing a combination of ground and aerial resources.</li> <li>• Utilize strategic firing operations to prevent escape or stop forward spread of fire if appropriate and directed to do so by the Operations Section Chief.</li> <li>• Respond to new fires at the request of Oklahoma Forestry Services to support and suppress any new emerging incidents under a Unified Command Structure.</li> </ul>			
6. Weather forecast for Period  High pressure will settle into the area for Monday with relatively light northerly winds expected. A few gusts in the afternoon are possible as well. Partly cloudy skies will be in place with high temperatures warming into the lower 70s. Minimum relative humidity values will be well above fire weather concerns.			
7. General Safety Message  Look up, look down, look all around for hazards, recognize them and mitigate them.			
8. ATTACHMENTS (X IF ATTACHED) <input checked="" type="checkbox"/> Organization List - ICS 203 <input checked="" type="checkbox"/> Medical Plan - ICS 206 <input type="checkbox"/> _____ <input checked="" type="checkbox"/> Division Assignment Lists - ICS 204 <input type="checkbox"/> Incident Map <input type="checkbox"/> _____ <input checked="" type="checkbox"/> Communications Plan - ICS 205 <input type="checkbox"/> Traffic Plan <input type="checkbox"/> _____			
9. Prepared By (Planning Section Chief)  <b>/s/ Dave Berens</b>		10. Approved By (Incident Commander)  <b>/s/ Danny Bryant</b>	

ORGANIZATION ASSIGNMENT LIST		9.	Operations Section
1. Incident Name <b>34 Complex</b>		Planning Operations	Ron Bertsch, Shawn Nagle (t)
		Field Operations	Jeff Schardt, Dan Martin (t)
2. Date 04/22/18			
3. Time 1700			
4. Operational Period 04/23/18 DAY (0800 – 2000)		<b>a.</b>	<b>Divisions/Groups</b>
		Division	A / D
			Greg Salansky, Jared Nobles (t)
<b>5. Incident Commander and Staff</b>		Division	G
Incident Commander	Steve Parrish, Danny Bryant Todd Finley, Tom Marcom	Division	J
		Division	Structure Protection
Liaison Officer	Keith Lawrence	Group	Initial Attack #1
Safety Officer	Buddy Kelley, Mark Sullivan, Larry Holsomback, Randy Miller		
Information Officer	Bonnie Strawser, Donald Simon, John Nichols, Adam Solt		
<b>6. Agency Reps</b>			
Woodward F.D. Chief	Todd Finley		
Mooreland F.D. Chief	Tom Marcom		
Fort Supply F.D. Chief	Mike Petty		
Sharon F.D. Chief	Bill Phillips		
Mutual F.D. Chief	Kevin Mitchell	<b>b.</b>	<b>Air Operations Branch</b>
Oklahoma Forestry Services	Mark Goeller	Air Operation Branch Director	Bruce Wicks
Oklahoma Emergency Management	Kristal Kuhn	Air Support Group Supervisor	Pete Kubiak
Woodward Emergency Management	Matt Lehenbauer	Air Tactical Group Supervisor	Tony Defalco
Mooreland Emergency Management	Jay Krukenberg	Air Tactical Group Supervisor	Joel Lane
Harper County Emergency Management	Dale Spradlin	Helibase Manager	John Bragg
<b>7. Planning Section</b>			
Chief	Dave Berens		
Resources Unit	Melonie Sellers, Carol O'Bryan		
Situation Unit	Bill Coates, E.J. Bunzendahl (t)		
FBAN	Jamie Atkins	<b>8.</b>	<b>Logistics Section</b>
IMET	David Shallenberger	Chief	Susan Cornett, Cameron Crisp (t)
Geo. Info. Spec.	Chris Evans, Christian Vose, Joseph Harsh (t), JT Allen (t)	Deputy	Duane Cihlar
Demob Unit	Henry Hickerson	Supply Unit	Ron Zabka, John Dunlap (t)
Status Check-In	Angela Marcano, Jocelyn Howell (t)	Facilities Unit	Gene-Paul Matson, Nelson Gonzalez-Sullow (t)
Training	Diane Bolt	Base Camp	JaDe Fleck
ITSS	John Edwards, Nikita Carty (t)	Ground Support	Todd Waller, Kevin Wagner (t)
Documentation	Jan Grisedale	Equipment Manager	Tristan Jamieson, Jason Mchan
<b>10. Finance Section</b>		Ordering Manager	Nina Donley, Durinda Hulett
Chief	Wanda Kelley Jennifer Cross (t)	Receiving & Distrib. Mgr.	Chris Combs
Time Unit	Jean Frick Sherise Foster (t)	Communications Unit	Terry Brinson
Cost Unit	Tom Steele	Communications Tech	John Comstock
Comp/Claims	Terri McDonald Pamela Stamper (t)	Radio Operator	Daniel Brown, Tyler Befus, Reggie Escarlan
Personnel Time Recorder	Gustavo Vallejo (t)	Medical Unit Leader	Jeffery Cummings
Procurement	Craig Ericson	Security	Tom Neal
Prepared by (RESL) /s/ Carol O'Bryan / Melonie Sellers			



## INCIDENT Weather Forecast



**FORECAST NO:** 09

**NAME OF FIRE:** 34 Complex

**PREDICTION FOR:** Day SHIFT

**UNIT:** Gold Team

**SHIFT DATE:** April 23 2018

**SIGNED:** David Shallenberger

**TIME AND DATE**

**Incident Meteorologist**

**FORECAST ISSUED:** 2000 April 22 2018

---

**WEATHER DISCUSSION:**

High pressure will settle into the area for Monday with relatively light northerly winds expected. A few gusts in the afternoon are possible as well. Partly cloudy skies will be in place with high temperatures warming into the lower 70s. Minimum relative humidity values will be well above fire weather concerns.

---

**WEATHER FORECAST MONDAY:**

**WEATHER:** Partly cloudy.

**TEMPERATURES:** 68-73

**HUMIDITY:** 45% to 50%

**20 FT WINDS:** N 5 to 10 mph with gusts to 15 mph in the afternoon possible.

**RFTI INDEX:** 0 Nil

**HAINES INDEX:** 3

**DISPERSION:** Poor in the morning around 20, increasing to fair in the afternoon around 40

---

**WEATHER FORECAST MONDAY NIGHT:**

**WEATHER:** Mostly clear. Increasing clouds towards dawn.

**TEMPERATURES:** 45-50

**HUMIDITY:** 95% to 100%

**20 FT WINDS:** N 5 to 10 mph

**RFTI INDEX:** 0 Nil

**HAINES INDEX:** 2

**DISPERSION:** Poor around 20

---

**OUTLOOK FOR TUESDAY:**

A rather weak frontal system will move into the area during the day on Tuesday. This will bring a chance of showers and thunderstorms over the area. The thunderstorms are not expected to be severe as the cold front moving through will be rather weak. Expect rainfall amounts up to 0.25.

---

**EXTENDED FORECAST WEDNESDAY AND THURSDAY:**

The low pressure system moving through will keep a 50% chance of showers and thunderstorms over the area for Wednesday morning. The thunderstorms are not expected to be severe. Expect conditions to clear out by the afternoon with the showers and thunderstorms coming to an end. High pressure will move into the area by Thursday with dry conditions returning to the area. Thursday looks to be a low end elevated fire weather day according to the Red Flag Threat Index.

## FIRE BEHAVIOR FORECAST

<b>FORECAST NUMBER:</b> 8	<b>TYPE OF FIRE:</b> Wildland
<b>FIRE NAME:</b> 34 Complex	<b>OPERATIONAL PERIOD:</b> Day Shift Monday April 23rd, 2018
<b>DATE ISSUED:</b> April 22nd, 2018	<b>TIME ISSUED:</b> 2000
<b>UNIT:</b> OK - OKS-180037	<b>SIGNED:</b> <i>James Atkins</i> James Atkins, FBAN

### INPUTS

#### WEATHER SUMMARY:

See attached forecast

**Max Temp:** 70-75 **Min Temp:** 45-50

**Min RH:** 30-35% **Max RH:** 95-100% (Excellent)

**Winds (20'):** N 5-10 Gust to 15 mph in the pm

**LAL:** 1 **Haines:** 3 **CWR:** 0%

### OUTPUTS

#### FIRE BEHAVIOR

##### GENERAL

The grass fuel beds were able to see some drying effects yesterday with the sun, winds and moderate RH values. Drying will continue today as well. Rates of spread will remain fairly slow today compared to previous forecast, unless coupled with slope and wind alignment in the grass.

**Forecasted Fuel Moistures:** 1 Hour (10%), 10 Hour (14%), 100 Hour (16%), 1000 Hour (6%)

**Red Flag Threat Index for today:** 0 "Nil"

**POI:** 30%

**ERC:** 59 (75%)

**BI:** 70 (75%)

**Rate of Spread:** 25-40 ch/hr

**Flame Lengths:** 3-6 ft

##### SPECIFIC:

**34 Complex:** Another excellent day to identify any remaining heat and get those areas mopped up for good.

**Initial Attack:** The potential is still out there for resources to respond to initial attack today. Size up all new incidents paying special attention to the fuels, slope and winds.

#### AIR OPERATIONS:

Unmanned Aircraft Systems (UAS) or "Drones" have been utilized by the media, insurance companies and the public in the fire area. These aircraft can add additional hazards to an already hazardous job especially for rotor wing aircraft.

### SAFETY

Even though fuel conditions have improved and fire behavior has drastically decreased think about the common denominators on tragedy fires today.

**Don't become a statistic!!**

## Division/Group Assignment List (ICS 204 WF)

<b>1. Incident Name:</b>				<b>3.</b>			
34 Complex				<b>Branch:</b>		<b>Division/Group:</b>	
<b>2. Operational Period: 0800-2000</b>				<b>A / D</b>			
Date/Time From: 04/23/18 0800		Date/Time To: 04/23/18 2000					
<b>4. Operations Personnel</b>							
<b>AIR ATTACK SUPERVISOR</b>		Tony Defalco 4/22 Joel Lane		<b>FIELD OPERATIONS</b>		Jeff Schardt 4/22 Dan Martin (t) 4/22	
<b>DIVISION/GROUP SUPERVISOR</b>		Greg Salansky 4/22 Jared Nobles (t) 4/22		<b>PLANNING OPERATIONS</b>		Ron Bertsh 4/22 Shawn Nagle (t) 4/22	
<b>5. Resources Assigned this Period</b>							
Strike Team / Task Force / Resource Designator			LWD	Leader	Number Persons	Drop Off PT./Time	Pick Up PT./Time
ENG T4	BLM-3471	E-57	4/22	Mickey Fearn	6	0800	2000
ENG T6	Wheeler 86	E-60	4/22	Carson Jones	2	0800	2000
SOF2			4/22	Mark Sullivan	1	0800	2000
EMPF			4/22	Patrick Horan	1	0800	2000
<b>6. Control Operations/Work Assignments:</b>							
<b>Task:</b>							
<ul style="list-style-type: none"> <li>• Mop up and cold trail 1 chain in from perimeter of fire.</li> </ul>							
<b>Purpose:</b>							
<ul style="list-style-type: none"> <li>• Keep fire within current perimeter</li> </ul>							
<b>End State:</b>							
<ul style="list-style-type: none"> <li>• No lateral spread of fire, one chain mop up completed, and has not grown in size for one operational period.</li> </ul>							
<b>7. Special Instructions:</b>							
<ul style="list-style-type: none"> <li>• Establish and maintain LCES on 34 Complex and emerging fires.</li> <li>• Document any damage or burned structures / infrastructure with a lat/long and photo</li> <li>• Stay clear and capture any lat/long of any hazmat situation and notify immediate supervisor</li> </ul>							
<b>8. Division/Group Communication Summary</b>							
Function	Channel	Channel Name	RX Frequency N/W	RX Tone/NAC	TX Frequency N/W	TX Tone/NAC	Mode
COMMAND	1	MESA	170.45		168.1		Analog
TACTICAL	4	VCALL 10	155.7525		155.7525	156.7	Analog
AIR TO GROUND	8	A/G Primary	169.2000		169.2000		Analog
<b>9. Prepared By (Resource Unit Leader)</b>			<b>Approved By (Planning Section Chief)</b>			<b>Date</b>	<b>Time</b>
Carol O'Bryan / Melonie Sellers			Dave Berens			04/22/18	2000

## Division/Group Assignment List (ICS 204 WF)

<b>1. Incident Name:</b>				<b>3.</b>					
<h1>34 Complex</h1>				<b>Branch:</b>		<b>Division/Group:</b>  <h1 style="text-align: center;">G</h1>			
<b>2. Operational Period: 0800 - 2000</b>									
Date/Time From: 04/23/18 0800		Date/Time To: 04/23/18 2000							
<b>4. Operations Personnel</b>									
<b>AIR ATTACK SUPERVISOR</b>		Tony Defalco Joel Lane		4/22		<b>FIELD OPERATIONS</b>			
						Jeff Schardt Dan Martin (t)			
<b>DIVISION/GROUP SUPERVISOR</b>		Matt Johnson		4/22		<b>PLANNING OPERATIONS</b>			
						Ron Bertsh Shawn Nagle (t)			
<b>5. Resources Assigned this Period</b>									
Strike Team / Task Force / Resource Designator			LWD	Leader		Number Persons	Drop Off PT./Time	Pick Up PT./Time	
ENG T6	McDuffie 86	E-61	4/22	Rob Moore		2	0800	2000	
EMPF			O-31	4/22	Eddy Rowell		1	0800	2000
SOF2			4/22	Mark Sullivan		1	0800	2000	
<b>6. Control Operations/Work Assignments:</b>									
<b>Task:</b>									
<ul style="list-style-type: none"> <li>• Mop up and cold trail 1 chain in from perimeter of fire.</li> </ul>									
<b>Purpose:</b>									
<ul style="list-style-type: none"> <li>• Keep fire within current perimeter</li> </ul>									
<b>End State:</b>									
<ul style="list-style-type: none"> <li>• No lateral spread of fire, one chain mop up completed, and has not grown in size for one operational period.</li> </ul>									
<b>7. Special Instructions:</b>									
<ul style="list-style-type: none"> <li>• Establish and maintain LCES on 34 Complex and emerging fires.</li> <li>• Document any damage or burned structures / infrastructure with a lat/long and photo</li> <li>• Stay clear and capture any lat/long of any hazmat situation and notify immediate supervisor</li> </ul>									
<b>8. Division/Group Communication Summary</b>									
Function	Channel	Channel Name	RX Frequency N/W	RX Tone/NAC	TX Frequency N/W	TX Tone/NAC	Mode		
COMMAND	1	MESA	170.45		168.1		Analog		
COMMAND	2	BRY SIN	169.375		164.7125		Analog		
TACTICAL	5	VTAC	151.1375		151.1375	156.7	Analog		
AIR TO GROUND	8	A/G Primary	169.2000		169.2000		Analog		
<b>9. Prepared By (Resource Unit Leader)</b>				<b>Approved By (Planning Section Chief)</b>		<b>Date</b>		<b>Time</b>	
Carol O'Bryan / Melonie Sellers				Dave Berens		04/22/18		2000	

## Division/Group Assignment List (ICS 204 WF)

<b>1. Incident Name:</b>				<b>3.</b>				
<h1>34 Complex</h1>				<b>Branch:</b>		<b>Division/Group:</b>  <h1 style="text-align: center;">J</h1>		
<b>2. Operational Period: 0800 - 2000</b>								
Date/Time From: 04/23/18 0800				Date/Time To: 04/23/18 2000				
<b>4. Operations Personnel</b>								
<b>AIR ATTACK SUPERVISOR</b>		Tony Defalco Joel Lane		4/22		<b>FIELD OPERATIONS</b>		
						Jeff Schardt 4/22 Dan Martin (t) 4/22		
<b>DIVISION/GROUP SUPERVISOR</b>		Tom Crews		4/22		<b>PLANNING OPERATIONS</b>		
						Ron Bertsh 4/22 Shawn Nagle (t) 4/22		
<b>5. Resources Assigned this Period</b>								
Strike Team / Task Force / Resource Designator			LWD	Leader		Number Persons	Drop Off PT./Time	Pick Up PT./Time
ENG T6	Berrien 86	E-62	4/22	Jason Gillis		2	0800	2000
SOF2			4/22	Randy Miller		1	0800	2000
<b>6. Control Operations/Work Assignments:</b>								
<b>Task:</b>								
<ul style="list-style-type: none"> <li>• Mop up and cold trail 1 chain in from perimeter of fire.</li> </ul>								
<b>Purpose:</b>								
<ul style="list-style-type: none"> <li>• Keep fire within current perimeter</li> </ul>								
<b>End State:</b>								
<ul style="list-style-type: none"> <li>• No lateral spread of fire, one chain mop up completed, and has not grown in size for one operational period.</li> </ul>								
<b>7. Special Instructions:</b>								
<ul style="list-style-type: none"> <li>• Establish and maintain LCES on 34 Complex and emerging fires.</li> <li>• Document any damage or burned structures / infrastructure with a lat/long and photo</li> <li>• Stay clear and capture any lat/long of any hazmat situation and notify immediate supervisor</li> </ul>								
<b>8. Division/Group Communication Summary</b>								
Function	Channel	Channel Name	RX Frequency N/W	RX Tone/NAC	TX Frequency N/W	TX Tone/NAC	Mode	
COMMAND	1	MESA	170.45		168.1		Analog	
COMMAND	3	FT SUPPLY	159.39		151.28	94.8	Analog	
TACTICAL	6	VTAC 13	158.7375		158.7375	156.7	Analog	
AIR TO GROUND	8	A/G Primary	169.2000		169.2000		Analog	
<b>9. Prepared By (Resource Unit Leader)</b>			<b>Approved By (Planning Section Chief)</b>			<b>Date</b>	<b>Time</b>	
Carol O'Bryan / Melonie Sellers			Dave Berens			04/22/18	2000	



### Division/Group Assignment List (ICS 204 WF)

<b>1. Incident Name:</b>				<b>3.</b>			
34 Complex				<b>Branch:</b>		<b>Division/Group:</b>	
<b>2. Operational Period: 0800 - 2000</b>						<b>Structure Protection</b>	
Date/Time From: 04/23/18 0800		Date/Time To: 04/23/18 2000					
<b>4. Operations Personnel</b>							
<b>AIR ATTACK SUPERVISOR</b>		Tony Delfalco 4/22 Joel Lane		<b>FIELD OPERATIONS</b>		Jeff Schardt 4/22 Dan Martin (t) 4/22	
<b>DIVISION/GROUP SUPERVISOR</b>		Randy Jones 4/22 Jason Klawinsky (t) 4/22		<b>PLANNING OPERATIONS</b>		Ron Bertsh 4/22 Shawn Nagle (t) 4/22	
<b>5. Resources Assigned this Period</b>							
Strike Team / Task Force / Resource Designator	LWD	Leader	Number Persons	Drop Off PT./Time	Pick Up PT./Time		
<b>6. Control Operations/Work Assignments:</b>							
<b>Task:</b>							
<ul style="list-style-type: none"> <li>Assess and plan for structure protection.</li> </ul>							
<b>Purpose:</b>							
<ul style="list-style-type: none"> <li>Identify and capture tactical measures to mitigate any threats to infrastructure.</li> </ul>							
<b>End State:</b>							
<ul style="list-style-type: none"> <li>Contingency plan for structure protection.</li> </ul>							
<b>7. Special Instructions:</b>							
<ul style="list-style-type: none"> <li>Establish and maintain LCES on 34 Complex and emerging fires.</li> <li>Document any damage or burned structures / infrastructure with a lat/long and photo</li> <li>Stay clear and capture any lat/long of any hazmat situation and notify immediate supervisor</li> </ul>							
<b>8. Division/Group Communication Summary</b>							
Function	Channel	Channel Name	RX Frequency N/W	RX Tone/NAC	TX Frequency N/W	TX Tone/NAC	Mode
COMMAND	1	MESA	170.45		168.1		Analog
TACTICAL	6	VTAC 13	158.7375		158.7375	156.7	Analog
AIR TO GROUND	8	A/G Primary	169.2000		169.2000		Analog
<b>9. Prepared By (Resource Unit Leader)</b>			<b>Approved By (Planning Section Chief)</b>			<b>Date</b>	<b>Time</b>
Carol O'Bryan / Melonie Sellers			Dave Berens			04/22/18	2000

## Division/Group Assignment List (ICS 204 WF)

<b>1. Incident Name:</b>			<b>3.</b>					
<h1 style="margin: 0;">34 Complex</h1>			<b>Branch:</b>		<b>Division/Group:</b> <h1 style="margin: 0;">Initial Attack</h1>			
<b>2. Operational Period:</b> 0800 - 2000								
Date/Time From: 04/23/18 0800		Date/Time To: 04/23/18 2000						
<b>4. Operations Personnel</b>								
<b>AIR ATTACK SUPERVISOR</b>		Tony Delfalco Joel Lane		4/22		<b>FIELD OPERATIONS</b>		
						Jeff Schardt Dan Martin (t)		
<b>DIVISION/GROUP SUPERVISOR</b>		Heath Thomas		4/22		<b>PLANNING OPERATIONS</b>		
						Ron Bertsh Shawn Nagle (t)		
<b>5. Resources Assigned this Period</b>								
Strike Team / Task Force / Resource Designator		LWD	Leader		Number Persons	Drop Off PT./Time	Pick Up PT./Time	
ENG T4	Tonto E-54	4/22	Adam Giordano		5	0800	2000	
ENG T6	BLM-ID 3694 E-63	4/22	Dylan Estep		5	0800	2000	
EMPF		O-32	4/22	John Dunzweiler		1	0800	2000
SOF2		4/22	Buddy Kelley		1	0800	2000	
<b>6. Control Operations/Work Assignments:</b>								
<b>Task:</b>								
<ul style="list-style-type: none"> <li>Provide for assistance to requests for initial attack by Oklahoma Forestry Services and cooperators.</li> </ul>								
<b>Purpose:</b>								
<ul style="list-style-type: none"> <li>To support local IA capabilities.</li> </ul>								
<b>End State:</b>								
<ul style="list-style-type: none"> <li>IA fires after establishing LCES and command structures and contain fire where and only when safe to do so.</li> </ul>								
<b>7. Special Instructions:</b>								
<ul style="list-style-type: none"> <li>Establish and maintain LCES on 34 Complex and emerging fires.</li> <li>Stay clear and capture any lat/long of any hazmat situation and notify immediate supervisor.</li> </ul>								
<b>8. Division/Group Communication Summary</b>								
Function	Channel	Channel Name	RX Frequency N/W	RX Tone/NAC	TX Frequency N/W	TX Tone/NAC	Mode	
COMMAND	1	MESA	170.45		168.1		Analog	
TACTICAL	7	VTAC 14	159.4725		159.4725	156.7	Analog	
AIR TO GROUND	9	VTAC 12	154.4525		154.4525	156.7	Analog	
<b>9. Prepared By (Resource Unit Leader)</b>			<b>Approved By (Planning Section Chief)</b>			<b>Date</b>	<b>Time</b>	
Carol O'Bryan / Melonie Sellers			Dave Berens			04/22/18	2000	

# AIR OPERATIONS SUMMARY

OPERATIONAL PERIOD DATE: **04-23-2018**

0800-2000

<b>1. INCIDENT NAME:</b> 34 Complex	<b>2. PREPARED BY:</b> Bruce Wicks <b>PREPARED DATE/TIME:</b> 04/22/2018 1815	<b>3. Sunrise:</b> 0654 <b>Sunset:</b> 2019
<b>4. REMARKS (Safety Notes, Hazards, Air Operations Special Equipment., etc.):</b> Medivac Aircraft: <b>Air Evac</b> Do not over fly structures with external load missions.  All aircraft will use strobes and running lights in smoky conditions. Hazards: Snags, non-incident aircraft, and winds. <u>Squawk 1255</u> <u>Cease all operations at sunset</u>		5.

6. PERSONNEL	Phone	7. FREQUENCIES	AM	FM	8. FIXED WING	FAA#/Base
AOBD---Bruce Wicks ASGS---Pete Kubiak	530-906-2224 404-661-4819	Air/Air Rotor Air/Air Fixed Wing	118.9250 119.9500		Air Attack	AC 500B – N112AA – AVK
ATGS: Tony DeFalco – 0FT	702-592-9215	Air/Ground Primary Air/Ground For IA (VTAC 12)		169.2000  154.4525 TX 156.7		
<u>Woodward Helibase (WWR)</u> HEB2 John Bragg	423-483-2798	National Flight Following		168.650 TX 110.9		
HMGB 135BH Billy Groves	406-407-1521					
		Air/Guard		168.6250 RX/TX Tone 110.9		
		Deck		163.100		

**9. HELICOPTERS (Use Additional Sheets As Necessary)**

FAA N# or Designator	TY	MAKE/MODEL	BASE	START	REMARKS	FAA N# or Designator	TY	MAKE/MODEL	BASE	START	REMARKS
715HT	1	S-64	WWR	0930	State resource						
135BH	1	S-70	WWR	0930	State resource						

TYPE/FUNCTION	NAME OF PERSONNEL OR CARGO (if applicable) OR INSTRUCTIONS FOR TACTICAL AIRCRAFT	MISSION START	FLY FROM	FLY TO
Water Drops	As Requested	0930	Woodward HB	Fire

# HEALTH AND SAFETY MESSAGE

INCIDENT: 34 Complex

DATE: Monday April 23, 2018

TIME: Day Shift

## *Major Hazards and Risks:*

### **Travel and Mop-up**

#### **Various Types of Engines and Equipment are on this incident.**

#### *If you are leaving, read this.*

Your assignment doesn't stop when you walk away from demob. Your final assignment is to arrive safely at home. The 2-to-1 work-rest policy applies. Drive defensively. Human nature ensures we are less patient when driving home...don't let impatience cause unsafe behavior. No driver will drive more than 10 hours within any duty-day. Multiple drivers in a single vehicle may drive up to the 16 hours limitation provided no driver exceeds the individual driving time limitation of 10 hours. Do not drive past 2200 hours. Do not eat and drive at the same time. Don't use the cell phone while driving...pull off the road or call during your stretch breaks.

#### *If you are assigned today, read this...*

Tragedies have occurred in periods of reduced fire activity, transitions, and mop-up stage. Maintain your situational awareness. Focus on your assignment. Manage distractions.

We look forward to seeing you on a future assignment.



Safety Officers

*Larry Holsomback, Buddy Kelley  
Mark Sullivan, Randy Miller*

## INCIDENT SAFETY ANALYSIS 215a

34 Complex - Monday, April 23, 2018

8. Location	9. Hazard	6. Control or Abatement Action (Engineering, Administrative, PPE, Avoidance, Education, etc)
All	Power Utilities	<ul style="list-style-type: none"> <li>~ Notify all personnel of down electrical lines</li> <li>~ Always treat downed wires as energized.</li> <li>~ Identify and avoid high pressure natural gas lines.</li> <li>~ Be aware of utility restoration in your work area.</li> </ul>
All	Extreme Fire Behavior	<ul style="list-style-type: none"> <li>~ Share weather observations with all personnel assigned to division.</li> <li>~ Establish "Trigger Points" to withdraw.</li> <li>~ Use "Risk Management" process prior to engaging in suppression actions, refer to page 1, IRPG.</li> <li>~ Establish and follow LCES at all times</li> </ul>
All	Air Operations	<ul style="list-style-type: none"> <li>~ Follow "Aviation Watch-Out Situations" on page 44, IRPG.</li> <li>~ Don't plan on air resources for medical transport or resupply.</li> <li>~ Refer to page 57, IRPG for directing bucket drops.</li> <li>~ Ensure positive communication with all air resources.</li> </ul>
All	Driving & Traffic	<ul style="list-style-type: none"> <li>~ Practice "Defensive Driving" techniques traveling on all roads and city streets.</li> <li>~ Watch for School Zone</li> <li>~ Observe posted speed limits.</li> <li>~ Avoid distractions (eating, cell phones, radio).</li> <li>~ Ensure that windshields are kept clean of dust and bugs.</li> </ul>
All	Hazard Trees	<ul style="list-style-type: none"> <li>~ Follow "Hazard Tree Safety" guidelines, IRPG page 22.</li> <li>~ Mitigate hazards by flagging off or removing dangerous snags.</li> <li>~ In areas that work must be performed use a spotter in mop-up areas with personnel.</li> <li>~ Don't park vehicles or take breaks in high concentrations of hazard trees.</li> <li>~ Remember that the hazard zone extends a minimum of 2 1/2 tree heights.</li> </ul>
All	Oil & Gas Lines	<ul style="list-style-type: none"> <li>~ Identify sites, Wind Socks indicate presence of Highly Toxic Gases, Stay up Wind.</li> <li>~ Do not depend on sense of smell for warning.</li> <li>~ Park at least 50 feet away from facilities and equipment.</li> <li>~ Avoid low lying areas during stagnant air conditions.</li> <li>~ Be Aware of exposed or shallow buried pipes and utilities.</li> </ul>
All	Injury & Medical Emergency	<ul style="list-style-type: none"> <li>~ Assist injured employee appropriate medical care.</li> <li>~ Use EMT's on Division for initial care.</li> <li>~ Follow medical protocol as outlined in ICS-206 WF &amp; IRPG Pgs 99-108</li> </ul>
IA	Heavy Equipment Operations	<ul style="list-style-type: none"> <li>~ Ensure communications are established with operators.</li> <li>~ Use hand signals if other communications are unavailable.</li> <li>~ Maintain a 50'-100' exclusion area around equipment and increase it to 1 1/2 times tree height when in timber.</li> <li>~ Use a spotter when backing.</li> <li>~ Avoid working below heavy equipment.</li> <li>~ Assess road surface for wet or slick conditions to avoid accidents or resource damage</li> </ul>
All	Communications	<ul style="list-style-type: none"> <li>~ Maintain communication with aviation resources, and suppression organization.</li> <li>~ Ensure all know frequency and protocol for contacting resources.</li> <li>~ Utilize the ICS 205.</li> <li>~ Utilize human repeaters when working in dead spots.</li> </ul>
All	Structure Protection & HAZMAT	<ul style="list-style-type: none"> <li>~ Review "Wildland Urban Interface" Watch outs, IRPG page 12.</li> <li>~ Use "Structure Assessment" checklist, IRPG pages 12-16.</li> <li>~ Follow "HAZMAT Incident Operations" on pages 34-36 in IRPG.</li> </ul>
All	Wildlife & Livestock	<ul style="list-style-type: none"> <li>~ Watch out for wildlife &amp; livestock inside fire area and along roadways.</li> <li>~ Clean up all debris and trash during each operational period.</li> </ul>

<b>MEDICAL PLAN</b>	1. Incident Name 34 Complex	2. Date Prepared <b>04/22/18</b>	3. Time Prepared 1430	4. Operational Period <b>Day Shift 4/23/18</b>				
<b>5. Incident Medical Aid Station</b>								
Medical Aid Stations	Location		Paramedics Yes No					
Jeff Cummings EMTF	317-730-6653	ICP 108 Temple Houston Dr, Woodward, Ok		X				
Patrick Horan EMPF	303-641-1137	Division A/D		X				
Wilson Rowell EMPF	334-504-2608	Division G		X				
John Dunzweiler EMPF	606-594-1627	Division IA		X				
Matt Jones EMPF	360-824-1360	Division J		X				
<b>6. Transportation</b>								
<b>A. Air Ambulance Services</b>								
Name	Address	Phone	Paramedics Yes No Tail Number					
Air Evac Life Team Bell 206	1620 Santa Fe, Woodward, OK 73801	<b>1-800-247-3822</b>	X	<b>N130AE</b>				
<b>(NO wind gust spread exceeding 18mph)</b>	<b>(NO winds over 45mph)</b>							
<b>B. Incident Ambulances</b>								
Name	Location	Paramedics Yes No Call Sign						
Woodward County EMS	ICP 108 Temple Houston Dr, Woodward, OK <b>(0800 - 2100)</b>	X		S-43				
Alex Brunner EMTB	<b>580-216-7938</b>		X					
Marty Graham EMTB	<b>580 -216-0081</b>	X						
<b>7. Hospitals</b>								
Name	Address	Travel Time Air Ground		Phone	Helipad Yes No	Burn Center Yes No		
Mercy Hospital	700 NE 13th, Lincoln Ave, OKC Level 1 Trauma	60 min	120m	405-271-4700	X		X	
Integrus Baptist Medical Center	3300 NW EXPRY OKC Burn Center/Level 3	60 min	120m	405-949-3011	X		X	
St. Mary's Regional	305 S. 5th Enid, OK Trauma/Level 3	30 min	90 min	580-233-6100	X		X	
Integrus Bass	600 S. Monroe, Enid, OK Cardiac/Level 3	30 min	90 min	580-233-2300	X		X	
Alliance Health Woodward	1620 Santa Fe, Woodward, OK General/Level 3	15 min	20 min	877-863-9595	X		X	
** Note: Air transport times are from the incident to the hospital only. Does not include flight time to the incident **								
<b>8. Medical Emergency Procedures</b>								
<ol style="list-style-type: none"> <li>1. Patient or nearest responder will notify Supervisor of the injury.</li> <li>2. The Supervisor will become the Incident-Within-the Incident Commander (IWI).</li> <li>3. IWI Commander will notify the nearest medical responder and ICP communications of the Incident</li> <li>4. IWI Commander will initiate the Nine Line Medical Incident Report attached to the 206 Form</li> </ol>								
Prepared by (Medical Unit Leader) Jeff Cummings MEDL					10. Reviewed by (Safety Officer) Larry Holsomback, SOF2			



<b>INCIDENT RADIO COMMUNICATIONS PLAN</b>			1. Incident Name <b>34 COMPLEX</b>			2. Date Time Prepared <b>04/22/2018 1630</b>		3. Operational Period Date/Time <b>04/23/2018 0800-2000</b>	
<b>4. Basic Radio Channel Utilization</b> Mode: W= Wideband, N= Narrowband, D= Digital, M= Mixed									
CHAN NAME	CH #	Function	Frequency	Tone/NAC	Mode	TX	Assignment	Remarks	
MESA	1	COMMAND	RX: 170.4500		Analog		ALL DIVISIONS	MESA and BRY SIN LINKED	
			TX: 168.1000						
BRY SIN	2	COMMAND	RX: 169.3750		Analog		G and Southern Area		
			TX: 164.7125						
FT SUPPLY	3	COMMAND	RX: 159.3900		Analog		DIVISION J		
			TX: 151.2800	94.8					
VCALL 10	4	TAC	RX: 155.7525		Analog		A, D		
			TX: 155.7525	156.7					
VTAC 11	5	TAC	RX: 151.1375		Analog		G		
			TX: 151.1375	156.7					
VTAC 13	6	TAC	RX: 158.7375		Analog		J, STRUCTURE PROTECTION		
			TX: 158.7375	156.7					
VTAC 14	7	TAC	RX: 159.4725		Analog		INTIAL ATTACK		
			TX: 159.4725	156.7					
A/G PRI	8	A/G	RX: 169.2000		Analog				
			TX: 169.2000						
VTAC 12	9	A/G	RX: 154.4525		Analog		INITIAL ATTACK		
			TX: 154.4525	156.7					
	10		RX:		Analog				
			TX:						
	11		RX:		Analog				
			TX:						
	12		RX:		Analog				
			TX:						
	13		RX:		Analog				
			TX:						
	14		RX:		Analog				
			TX:						
	15		RX:		Analog				
			TX:						
AIR GUARD	16	AIR GUARD	RX: 168.6250		Analog				
			TX: 168.6250	110.9					
5. Prepared by (Communications Unit) TERRY BRINSON COML									

*Note: This is not a standard NWCG ICS205 Form*



## Human Resource Message

The mission of the Gold Team is to safely, effectively and efficiently manage the 34 Complex by maintaining a team of skilled and productive personnel.

During this incident we will strive to successfully complete our mission and achieve our objectives while creating a positive, drug and alcohol free work environment for all assigned incident personnel.

The Gold Team fully supports EEO and will not tolerate sexual harassment or any form of discrimination!

All inappropriate behavior will be dealt with promptly. Disciplinary action and reporting back to an individual's home unit will be initiated as necessary.

Please report any incidents of inappropriate behavior to your supervisor, Danny Bryant or myself immediately.

*Steve Parrish*, Incident Commander



## ***TRAINING SPECIALIST MESSAGE***

**Monday will be the deadline for closing out your training package on this incident.**

**All packages are due in by the end of shift Monday, April 23, 2018.**

**Regardless of home agency, in order to insure incident documentation of any training assignment – You must register and close your assignment with Training Specialist.**

**Bring a *completed* individual performance rating and your taskbook to the exit interview.**

**Thank you**

*Diane Bolt*

*Training Specialist*

34 Complex  
Tentative DMOB Flights

REQ #	NAME	Travel Method	JETPORT	Home JetPort	Travel Date
O-10	TYLER JAMES BEFUS	AIR	OKC	DEN	04/25/18
O-14	JASON BURCH MCHAN	A/R	OKC	TYS	04/25/18
O-22	SEAN P GAST	A/R	OKC	SMF	04/24/18
O-23	DENNIS C GASTON	A/R	OKC	RIC	04/24/18
O-24	JOSEPH K PEARLMAN	A/R	OKC	SMF	04/24/18
O-25	MICHAEL CHRISTOPHER BROD	A/R	OKC	ATL	04/24/18
O-26	LOY BRIAN ELAM	A/R	OKC	GSO	04/24/18
O-27	JAMES R WETTSTAED	A/R	OKC	ATL	04/24/18
O-32	JOHN DANIEL SCOTT DUNZWEILER	AIR	OKC	LEX	04/24/18
O-34	MATTHEW BRUCE JONES	A/R	OKC	SEA	04/24/18
O-37	DAVID JAMES SHALLENBERGER	A/R	OKC	LEX	04/24/18
O-38	DURINDA SUE HULETT	AIR	OKC	PIA	04/25/18
O-31	William Edward Rowell	AIR	OKC	MGM	04/24/18
O-33	Patrick Paige Horan, Jr.	AIR	OKC	DEN	04/24/18
O-45	CHRISTIAN DANIEL VOSE	A/R	OKC	RDU	04/24/18
O-7.54	Elizabeth Jane Bunzendahl	A/R	OKC	LEX	04/25/18
O-47	Ja De ALGRAM FLECK	A/R	OKC	GEG	04/25/18
O-51	NELSON ENRIQUE GONZALEZ-	A/R	OKC	ATL	04/26/18
O-6	ADAM M SOLT	A/R	OKC	SLC	04/25/18
O-8	DANIEL SCOTT BROWN	A/R	OKC	BZN	04/25/18
O-9	REGINALD ESCARLAN	AIR	OKC	LAX	04/25/18
O-58	DARREN FRANK CLUFF	A/R	OKC	PHX	04/24/18
O-49	JANET P GRISEDALE	AIR	OKC	SLC	04/25/18
O-53	HANS JASON RUDOLF	A/R	OKC	PSR	04/24/18
O-59	GARBIEL TAPP CLUFF	A/R	OKC	JAX	04/24/18
C-5.1	JUWANNA SAMPSON	AIR	OKC	TYS	04/26/18
C-5.2	TIYANNA D WILLIAMS	AIR	OKC	TYS	04/26/18
C-5.3	JARED A SHIVERS	AIR	OKC	TYS	04/26/18
C-5.4	BRIAN A MITCHELL	AIR	OKC	TYS	04/26/18
C-5.5	DAVID MICHAEL YOUNGBLOOD	AIR	OKC	TYS	04/26/18
C-5.6	JAVON J MARS, SR	AIR	OKC	TYS	04/26/18
C-5.7	KIELA HALL	AIR	OKC	BNA	04/26/18
C-5.8	GULAINÉ MIHAYO	AIR	OKC	BNA	04/26/18
C-5.9	CHRISTIAN PRICE	AIR	OKC	BNA	04/26/18
C-5.10	SAMUEL BROWN	AIR	OKC	BNA	04/26/18
C-5.11	KALIL KENNEDY	AIR	OKC	BNA	04/26/18
C-5.12	SHIANNE LASLEY	AIR	OKC	BNA	4/26/2018

In case of travel issues:

1-855-207-1737

1-501-321-5234

1-501-321-5232

Travel Agent

AOICC

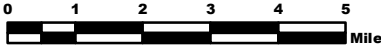
AOICC 24 HOUR

REQ #	NAME ON ID	Date of Birth	Sex	Travel Method	Travel Date	INCIDENT JETPORT	Home JetPort	PHONE #
C-5.1	JUWANNA SAMPSON	5/4/75	F	AIR	04/26/18	OKC	TYS	6063101450
C-5.2	TIYANNA D WILLIAMS	3/24/95	F	AIR	04/26/18	OKC	TYS	
C-5.3	JARED A SHIVERS	9/21/92	M	AIR	04/26/18	OKC	TYS	
C-5.4	BRIAN A MITCHELL	9/8/95	M	AIR	04/26/18	OKC	TYS	
C-5.5	DAVID MICHAEL YOUNGBLOOD	12/21/96	M	AIR	04/26/18	OKC	TYS	
C-5.6	JAVON J MARS, SR	7/4/98	M	AIR	04/26/18	OKC	TYS	
C-5.7	KIELA HALL	12/15/89	M	AIR	04/26/18	OKC	BNA	9319364840
C-5.8	GULAINÉ MIHAYO	1/1/94	F	AIR	04/26/18	OKC	BNA	
C-5.9	CHRISTIAN PRICE	4/27/99	M	AIR	04/26/18	OKC	BNA	
C-5.10	SAMUEL BROWN	8/11/98	M	AIR	04/26/18	OKC	BNA	
C-5.11	KALIL KENNEDY	5/13/95	F	AIR	04/26/18	OKC	BNA	
C-5.12	SHIANNE LASLEY	4/7/00	F	AIR	04/26/18	OKC	BNA	



# 34 Complex OK-OKS-180037 IAP Map 04/23/18 Day

Est 62,481 Acres on 4/21/2018



Datum NAD83  
JA 04-22-2018

## DIV A

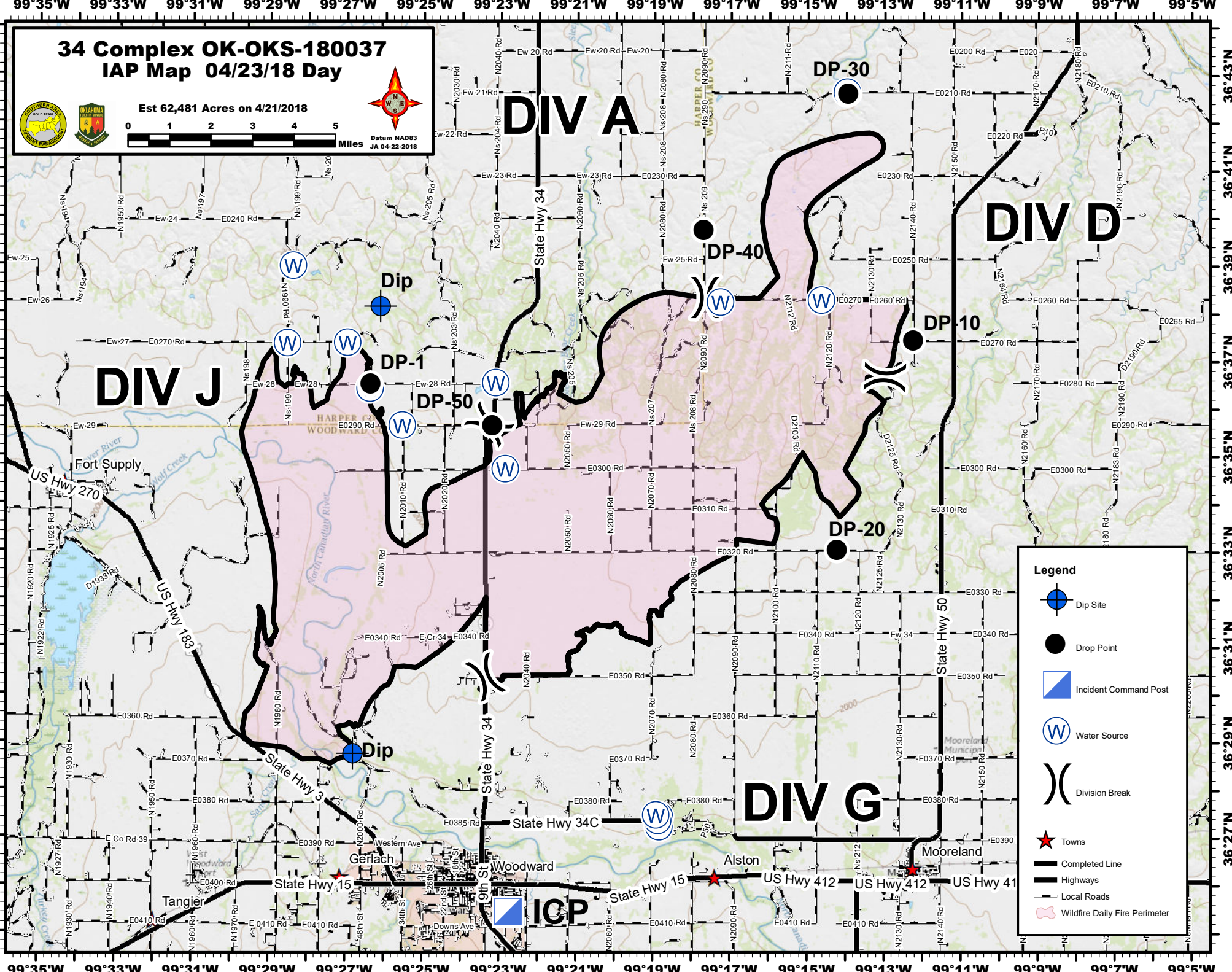
## DIV D

## DIV J

## DIV G

### Legend

- Dip Site
- Drop Point
- Incident Command Post
- Water Source
- Division Break
- Towns
- Completed Line
- Highways
- Local Roads
- Wildfire Daily Fire Perimeter



## PHONE LIST - 34 Complex

Position	Name	Phone Number	Position	Name	Phone Number
<b>COMMAND</b>			<b>FINANACE</b>		
Incident Commander	Steve Parrish	850-524-1244	Time Unit Leader (t)	Sherise Foster	919-943-7843
Incident Commander	Danny Bryant	601-500-2505	Procurment Unit Leader	Craig Ericson	570-720-4743
Liaison Officer	Keith Lawrence	803-522-5264	Cost Unit Leader	Tom Steele	770-363-3583
Public Information	Bonnie Strawser	252-216-8667	Comp/Claims	Terri McDonald	352-454-5385
Public Information	John Nichols	501-282-9634	Comp/Claims (t)	Pamela Stamper	276-389-7477
Public Information	Adam Solt	435-201-0856	Personel Time Recorder (t)	Gustavo Vallejo	423-284-1041
Public Information (t)	Donald Simon	910-975-1895	<b>PLANNING</b>		
Safety Officer	Buddy Kelley	850-447-1344	Chief	Dave Berens	601-319-6823
Safety Officer	Mark Sullivan	205-531-7183	Resource Unit Leader	Melonie Sellers	601-508-8997
Safety Officer	Larry Holsomback	706-280-4716	Resource Unit Leader	Carol O'Bryan	903-263-8704
Safety Officer	Randy Miller	571-232-7922	Situation Unit Leader	Bill Coates	770-688-5721
<b>OPERATIONS</b>			Situation Unit Leader (t)	EJ Bunzendahl	859-556-2347
Planning Ops	Ron Bertsch	706-515-5625	Fire Behavior Analyst	Jamie Atkins	706-955-5986
Planning Ops (t)	Shawn Nagle	662-231-4024	IMET	David Shallenberger	606-481-9238
Field Ops	Jeff Schardt	706-280-5498	GISS	Chris Evans	928-273-4203
Field Ops (t)	Dan Martin	540-266-2042	GISS	Christian Vose	828-342-0512
Division A / D	Greg Salansky	865-414-6461	GISS (t)	Joseph Harsh	662-803-1973
Division A / D (t)	Jared Nobles	352-317-6297	GISS (t)	JT Allen	405-593-6226
Division G	Matt Johnson	870-415-0185	Demob	Henry Hickerson	540-798-2218
Division J	Tom Crews	252-216-6361	Check In	Angela Marcano	706-474-4026
Structure Protection Group	Randy Jones	352-267-7700	Check In (t)	Jocelyn Howell	214-934-0138
Structure Protection Group (t)	Jason Klawinsky	936-520-8827	Training Specialist	Diane Bolt	828-553-8870
Initial Attack Group #1	Heath Thomas	501-208-7077	Compter Tech	John Edwards	850-261-9127
<b>AIR OPERATIONS</b>			Compter Tech	Nikita Carty	305-878-9907
Air Operation Branch Director	Bruce Wicks	530-906-2224	<b>LOGISTICS</b>		
Air Support Group Supervisor	Pete Kubiak	404-661-4819	Chief	Susan Cornett	903-930-5321
Air Tatical Group Supervisor	Tony Defalco	702-592-9215	Chief (t)	Cameron Crisp	304-642-2035
Air Tatical Group Supervisor	Joel Lane	559-310-9430	Deputy	Duane Cihlar	218-370-1662
Helibase Manager	John Bragg	423-483-2798	Supply Unit	Ron Zabka	603-630-4916
<b>FINANACE</b>			Supply Unit (t)	John Dunlap	580-216-1882
Chief	Wanda Kelley	423-584-1472	Facilities Unit	Gene-Paul Matson	434-665-0444
Chief (t)	Jennifer Cross	423-715-9025	Facilities Unit	Lodging Contact	580-216-8105
Time Unit Leader	Jean Frick	828-361-5361	Ground Support Unit Leader	Todd Waller	501-337-6308
			Ground Support Unit Leader (t)	Kevin Wagner	479-243-6649
			Ordering Manager	Nina Donley	205-243-8816
			Ordering Manager	Durinda Hulett	309-338-1667
			Receiving & Distribution	Chris Combs	727-992-0046
			Communications	Terry Brinson	386-868-7649
			Medical Unit Leader	Jeffery Cummings	317-730-6653
			Security Manager	Tom Neal	618-201-2111



## Medical Incident Report- "9 Line"

**FOR ALL MEDICAL EMERGENCIES: IDENTIFY ON SCENE INCIDENT COMMANDER BY NAME AND POSITION AND ANNOUNCE "MEDICAL EMERGENCY" TO INITIATE RESPONSE FROM IMT COMMUNICATIONS/DISPATCH.**

Use items one through nine to communicate situation to communications/dispatch.

**1. CONTACT COMMUNICATIONS/DISPATCH**

*Ex: "Communications, Div. Alpha. Stand-by for Priority Medical Incident Report." (If life threatening request designated frequency be cleared for emergency traffic.)*

**2. INCIDENT STATUS: Provide incident summary and command structure.**

Nature of Injury/Illness		<i>Describe the injury (Ex: Broken leg with bleeding)</i>
Incident Name		<i>Geographic Name + "Medical" (Ex: Trout Meadow Medical)</i>
Incident Commander		<i>Name of IC</i>
Patient Care		<i>Name of Care Provider (Ex: EMT Smith)</i>

**3. INITIAL PATIENT ASSESSMENT: Complete this section for each patient. This is only a brief, initial assessment. Provide additional patient info after completing this 9 Line Report.**

Number of Patients:	Male / Female	Age:	Weight:
Conscious? <input type="checkbox"/> YES <input type="checkbox"/> NO = MEDEVAC!			
Breathing? <input type="checkbox"/> YES <input type="checkbox"/> NO = MEDEVAC!			
Mechanism of Injury: <i>What caused the injury?</i>			
Lat/Long (Datum WGS84)			

**4. SEVERITY OF EMERGENCY, TRANSPORT PRIORITY**

SEVERITY	TRANSPORT PRIORITY
<input type="checkbox"/> URGENT-RED Life threatening injury or illness. <i>Ex: Unconscious, difficulty breathing, bleeding severely, 2° – 3° burns more than 4 palm sizes, heat stroke, disoriented.</i>	Ambulance or MEDEVAC helicopter. Evacuation need is IMMEDIATE.
<input type="checkbox"/> PRIORITY-YELLOW Serious Injury or illness. <i>Ex: Significant trauma, not able to walk, 2° – 3° burns not more than 1-2 palm sizes.</i>	Ambulance or consider air transport if at remote location. Evacuation may be DELAYED.
<input type="checkbox"/> ROUTINE-GREEN Not a life threatening injury or illness. <i>Ex: Sprains, strains, minor heat-related illness.</i>	Non-Emergency. Evacuation considered Routine of Convenience.

**5. TRANSPORT PLAN:**

Air Transport: (Agency Aircraft Preferred)

<input type="checkbox"/> Helispot	<input type="checkbox"/> Short-haul/Hoist	<input type="checkbox"/> Life Flight	<input type="checkbox"/> Other
Ground Transport:			
<input type="checkbox"/> Self-Extract	<input type="checkbox"/> Carry-Out	<input type="checkbox"/> Ambulance	<input type="checkbox"/> Other

**6. ADDITIONAL RESOURCE/EQUIPMENT NEEDS:**

<input type="checkbox"/> Paramedic/EMT(s)	<input type="checkbox"/> Crew(s)	<input type="checkbox"/> SKED/Backboard/C-Collar
<input type="checkbox"/> Burn Sheet(s)	<input type="checkbox"/> Oxygen	<input type="checkbox"/> Trauma Bag
<input type="checkbox"/> Medication(s)	<input type="checkbox"/> IV/Fluid(s)	<input type="checkbox"/> Cardiac Monitor/AED
<input type="checkbox"/> Other (i.e. splints, rope rescue, wheeled litter)		

**7. COMMUNICATIONS:**

Function	Channel Name/Number	Receive (Rx)	Tone/NAC *	Transmit (Tx)	Tone/NAC *
A - G	34 Complex Fire	169.200		169.200	
COMMAND	MESA	170.45		168.1	
AIR-TO-GRND	VTAC 12	154.4525	156.7	154.4525	For Aircraft without A-G

\*(NAC for digital radio system)

**8. EVACUATION LOCATION:**

Lat/Long (Datum WGS84) <i>EX: N 40 42.45' x W 123 03.24'</i>	
Patient's ETA to Evacuation Location:	
Helispot/Extraction Size and Hazards:	

**9. CONTINGENCY:**

<b>Considerations:</b> <i>If primary options fail, what actions can be implemented in conjunction with primary evacuation method? Be thinking ahead...</i>	<b>REMEMBER:</b> <b>Confirm ETA's of resources ordered Act according to your level of training Be Alert. Keep Calm. Think Clearly. Act Decisively.</b>
--	--