

# Incident Action Plan

## Unified Command



Day Operational Period

Thursday

4/19/18

0800-2000



Woodward F.D.

Night Operational Period

Wednesday / Thursday

4/19/18 - 4/20/18

2000-0800

### 34 Complex

OK-OKS-180037

PNLN1P (1502)

FF2000000LN1PO Fund 18x

INCIDENT OBJECTIVES	1. Incident Name <b>34 Complex</b>	2. Date Prepared <b>4/18/18</b>	3. Time Prepared <b>1700</b>
4. Operational Period <b>DAY 4/19/18 0800 – 2000</b> <b>NIGHT 4/19/18 – 4/20/18 2000-0800</b>			
5. General Control Objectives For The Incident <u>Objectives for the Incident:</u> <ul style="list-style-type: none"> <li>• Ensure protection of human life as a top priority through the use of sound risk management decisions in all actions.</li> <li>• Provide for protection of private property, infrastructure, State, County and Municipal facilities by using sound suppression tactics on all intial and extended attack fires.</li> <li>• Provide training opportunities to Oklahoma Forestry Services personnel to strengthen organizational capabilites and complete training assignments.</li> <li>• Ensure sensitivity to the impacts of suppression activites to private property by fostering and maintaining relationships with appropriate agencies, elected officials, business leaders and members of the public.</li> <li>• Provide accurate information messaging through coordination between the Southern Area Gold Team and Oklahoma Forestry Services Public Information Officers.</li> </ul>			
<u>Control Objectives:</u> <ul style="list-style-type: none"> <li>• Utilize full suppression tactics to keep 34 Complex fire contained within the current footprint by utilizing a combination of ground and aerial resources.</li> <li>• Utilize strategic firing operations to prevent escape or stop forward spread of fire if appropriate and directed to do so by the Operations Section Chief.</li> <li>• Respond to new fires at the request of Oklahoma Forestry Services to support and suppress any new emerging incidents under a Unified Command Structure.</li> </ul>			
6. Weather forecast for Period  High pressure will begin to move into the area as winds will begin to shift around to the east and then the southeast by the afternoon. With this flow, a bit more moisture will begin to flow into the area as min RH will only drop into the middle 20 range. Temperatures are expected to be a bit cooler as well with highs in the low 60s.			
7. General Safety Message  Look up, look down, look all around for hazards, recognize them and mitigate them.			
8. ATTACHMENTS (X IF ATTACHED) <input checked="" type="checkbox"/> Organization List - ICS 203 <input checked="" type="checkbox"/> Medical Plan - ICS 206      [ ] _____ <input checked="" type="checkbox"/> Division Assignment Lists - ICS 204      [ ] Incident Map      [ ] _____ <input checked="" type="checkbox"/> Communications Plan - ICS 205      [ ] Traffic Plan      [ ] _____			
9. Prepared By (Planning Section Chief)  <b>/s/ Dave Berens</b>	10. Approved By (Incident Commander)  <b>/s/ Danny Bryant</b>		

ORGANIZATION ASSIGNMENT LIST		9.	Operations Section	
1. Incident Name  <b>34 Complex</b>		Planning Operations		Ron Bertsch, Shawn Nagle (t)
		Field Operations		Jeff Schardt, Dan Martin (t)
		Night Operations		Bryan Elam
2. Date 04/18/18	3. Time 1700			
4. Operational Period 04/19/18 DAY (0800 – 2000) 04/19/18 - 4/20/18 NIGHT (2000-0800)		<b>a.</b>		<b>Divisions/Groups</b>
		Division	A	Sean Gast, Joe Pearlman (t)
<b>5. Incident Commander and Staff</b>		Division	D	Greg Salansky, Jared Nobles (t)
Incident Commander	Steve Parrish, Danny Bryant Todd Finley, Tom Marcom	Division	G	Matt Johnson
		Division	J	Tom Crews
Liaison Officer	Keith Lawrence	Group	Structure Protection	Randy Jones, Jason Klawinsky (t)
Safety Officer	Buddy Kelley, Mark Sullivan, Larry Holsomback, Randy Miller	Group	Initial Attack	Heath Thomas, Mike Brod (t)
Information Officer	Bonnie Strawser, Donald Simon, John Nichols, Adam Solt	Group	Night Shift	Jerry Anderson, Dennis Gaston (t) ,
<b>6. Agency Reps</b>				
Woodward F.D. Chief	Todd Finley			
Mooreland F.D. Chief	Tom Marcom			
Fort Supply F.D. Chief	Mike Petty			
Sharon F.D. Chief	Bill Phillips			
Mutual F.D. Chief	Kevin Mitchell	<b>b.</b>		<b>Air Operations Branch</b>
Oklahoma Forestry Services	Mark Goeller	Air Operation Branch Director		Bruce Wicks
Oklahoma Emergency Management	Kristal Kuhn	Air Support Group Supervisor		Pete Kubiak
Woodward Emergency Management	Matt Lehenbauer	Air Tactical Group Supervisor		Tony Defalco
Mooreland Emergency Management	Jay Krukenberg	Air Tactical Group Supervisor		Pete Koerber
		Helibase Manager		John Bragg
<b>7. Planning Section</b>				
Chief	Dave Berens			
Resources Unit	Melonie Sellers, Carol O'Bryan			
Situation Unit	E.J. Bunzendahl (t)			
FBAN	Jamie Atkins	<b>8. Logistics Section</b>		
IMET	David Shallenberger	Chief		Susan Cornett, Cameron Crisp (t)
Geo. Info. Spec.	Chris Evans, Christian Vose, Joseph Harsh (t), JT Allen (t)	Deputy		Duane Cihlar
Demob Unit	Henry Hickerson	Supply Unit		Ron Zabka, John Dunlap (t)
Status Check-In	Angela Marcano, Jocelyn Howell (t)	Facilities Unit		Gene-Paul Matson
Training	Diane Bolt	Base Camp		Nelson Gonzalez-Sullow
ITSS	John Edwards, Nikita Carty (t)	Ground Support		Todd Waller, Kevin Wagner (t)
		Equipment Manager		Tristan Jamieson, JasonMchan
		Ordering Manager		Nina Donley, Durinda Hulett
<b>10. Finance Section</b>				
Chief	Wanda Kelley, Jennifer Cross (t)	Receiving & Distrib. Mgr.		Chris Combs
Time Unit	Jean Frick / Sherise Foster (t)	Communications Unit		Terry Brinson
Cost Unit	Tom Steele	Radio Operator		Daniel Brown, Tyler Befus
Comp/Claims	Terri McDonald, Pamela Stamper (t)	Medical Unit Leader		Jeffery Cummings
Personnel Time Recorder	Gustavo Vallejo (t)	Security		Tom Neal
Prepared by (RESL) /s/ Carol O'Bryan / Melonie Sellers				



## INCIDENT Weather Forecast



**FORECAST NO:** 05

**NAME OF FIRE:** 34 Complex

**PREDICTION FOR:** Day/Night **SHIFT**

**UNIT:** Gold Team

**SHIFT DATE:** April 19 2018

**SIGNED:** David Shallenberger

**TIME AND DATE**

**Incident Meteorologist**

**FORECAST ISSUED:** 2000 April 18 2018

---

### **WEATHER DISCUSSION:**

High pressure will begin to move into the area as winds will begin to shift around to the east and then the southeast by the afternoon. With this flow, a bit more moisture will begin to flow into the area as min RH will only drop into the middle 20 range. Temperatures are expected to be a bit cooler as well with highs in the low 60s.

---

### **WEATHER FORECAST THURSDAY:**

**WEATHER:** Mostly Sunny

**TEMPERATURES:** 60-65

**HUMIDITY:** 20% to 25%

**20 FT WINDS:** E 5 to 10 mph early, then SE 5 to 15 with gusts to 25 in the afternoon

**RFTI INDEX:** 1 Elevated

**HAINES INDEX:** 5

**DISPERSION:** Poor in the morning around 20, increasing to generally good in the afternoon around 50

---

### **WEATHER FORECAST THURSDAY NIGHT:**

**WEATHER:** Clear

**TEMPERATURES:** 40-45

**HUMIDITY:** 50% to 55%

**20 FT WINDS:** SE 5 to 10 with gusts to 15 mph early, then becoming light

**RFTI INDEX:** 1 Elevated

**HAINES INDEX:** 2

**DISPERSION:** Fair early 40, then decreasing to Poor late around 20

---

### **OUTLOOK FOR FRIDAY:**

A frontal system will begin to move into the area by Friday afternoon. As the warm front passes to the south, southeast flow will bring a slight chance of showers and a couple thunderstorms to the area by Friday evening. The increased southeast flow will bring additional moisture into the area as well.

---

### **EXTENDED FORECAST SATURDAY AND SUNDAY:**

As the low pressure system pushes further east, a better chance of showers and thunderstorms will pass through western OK. This will bring around a 1.00 and a 1.25 inch over the Friday overnight and through the day Saturday. This looks to be a good wetting rain with a small chance of thunderstorms and a better chance of showers.

# FIRE BEHAVIOR FORECAST

<b>FORECAST NUMBER:</b> 4	<b>TYPE OF FIRE:</b> Wildland
<b>FIRE NAME:</b> 34 Complex	<b>OPERATIONAL PERIOD:</b> Day/Night, Thursday April 19 <sup>th</sup> , 2018
<b>DATE ISSUED:</b> April 18 <sup>th</sup> , 2018	<b>TIME ISSUED:</b> 2000
<b>UNIT:</b> OK - OKS-180037	<b>SIGNED:</b> <i>James Atkins</i> James Atkins, FBAN

## INPUTS

### WEATHER SUMMARY:

Mostly sunny

**Max Temp:** 60-65 **Min Temp:** 40-45 **Min RH:** 20-25% **Max RH:** 50-60% (Good) **Winds (20'):** SE 10-20 Gusting 25 in the pm **LAL:** 1 **Haines:** 5 – Moderate **CWR:** 0%

## OUTPUTS

### FIRE BEHAVIOR

#### GENERAL

Complete curing of the vigorous herbaceous growth from the growing season has resulted in an above normal fuel loading. Persistent drought indices have resulted in very dry large fuels. Above normal fuel loadings in full dormancy and critical low 1000 hour fuel moistures are expected to continue to produce problematic fire behavior in the grass, shrub and timber.

Short range spotting from single and group tree torching (cedar/juniper) may produce 1/10th mile spotting. Slope and wind alignment will produce the worst case rate of spreads from below.

Fuel Model	Rate of Spread	Flame Length
GR2 short/grazed	1/2 -1 mph	2-8 ft
GS3 2-3' tall heavy load	1/2 - 1 mph	6-18 ft
TU3 Shinnery Oak	1/4 – 1/2 mph	8-12 ft

1 Hour FM	10 Hour FM	100 Hour FM	1000 Hour FM	Burning Index-G	ERC-G
4	6	5	4	105	105
Herb FM	Woody FM	Cedar	Juniper	95 <sup>th</sup> %	97 <sup>th</sup> %
40	72	68	70		

**Red Flag Threat Index for today:** 1 "Elevated"

**POI:** 60-70%

### SPECIFIC:

**34 Complex:** Expect areas still holding heat and exposed to wind specifically heavy fuels underneath cedar/juniper to continue to smolder. If unburned fuels are available torching may be seen with the possibility of 1/10<sup>th</sup> mile spotting.

**Initial Attack:** IA fires will remain a valid concern throughout the next several days. Expect a moderate resistance to control on any new IA fires, but be mindful of the fuel loading, topography and wind speeds.

**Night Operations:** With the current fuels and weather conditions expect the burn period to last well into the night before RH and fuel moistures values recover. Rates of spread and flame lengths above will remain valid if wind driven fires are encountered at night.

### AIR OPERATIONS:

With the winds coming around from the southeast, any smoke production from the Rhea Fire may limit visibility over the 34 Complex.

## SAFETY

Standard Order #3 is emphasized today: **Base all actions on current and expected behavior of the fire.** In the fire environment, base all actions, not some of them, on fire behavior, not something else!

## z Division/Group Assignment List (ICS 204 WF)

<b>1. Incident Name:</b>				<b>3.</b>			
<b>34 Complex</b>				<b>Branch:</b>		<b>Division/Group:</b>	
<b>2. Operational Period: 0700-1900</b>						<b>A</b>	
Date/Time From: 04/19/18 0800		Date/Time To: 04/19/18 2000					
<b>4. Operations Personnel</b>							
<b>AIR ATTACK SUPERVISOR</b>		Tony Defalco Pete Koerber		4/28		<b>FIELD OPERATIONS</b>	
						Jeff Schardt Dan Martin (t)	
<b>DIVISION/GROUP SUPERVISOR</b>		Sean Gast Joe Pearlman (t)		4/29 4/28		<b>PLANNING OPERATIONS</b>	
						Ron Bertsh Shawn Nagle (t)	
<b>5. Resources Assigned this Period</b>							
Strike Team / Task Force / Resource Designator			LWD	Leader	Number Persons	Drop Off PT./Time	Pick Up PT./Time
ENG T3 Utah Fire 16 E-70			4/30	Krista Spraycar	3	0800	2000
SOF2			4/29	Mark Sullivan	1	0800	2000
EMPF			4/29	Patrick Horan	1	0800	2000
<b>6. Control Operations/Work Assignments:</b>							
<b>Task:</b>							
<ul style="list-style-type: none"> <li>• Mop up and cold trail 1 chain in from perimeter of fire.</li> </ul>							
<b>Purpose:</b>							
<ul style="list-style-type: none"> <li>• Keep fire within current perimeter</li> </ul>							
<b>End State:</b>							
<ul style="list-style-type: none"> <li>• Fire is at least 90% contained and has not grown in size for one operational period.</li> </ul>							
<b>7. Special Instructions:</b>							
<ul style="list-style-type: none"> <li>• Practice LCES</li> <li>• Document any damage or burned structures / infrastructure with a lat/long and photo</li> <li>• Stay clear and capture any lat/long of any hazmat situation and notify immediate supervisor</li> </ul>							
<b>8. Division/Group Communication Summary</b>							
Function	Channel	Channel Name	RX Frequency N/W	RX Tone/NAC	TX Frequency N/W	TX Tone/NAC	Mode
COMMAND	1	MESA	170.45		168.1		Analog
TACTICAL	4	VCALL10	155.7525		155.7525	156.7	Analog
AIR TO GROUND	8	A/G Primary	169.2000		169.2000		Analog
<b>9. Prepared By (Resource Unit Leader)</b>				<b>Approved By (Planning Section Chief)</b>		<b>Date</b>	<b>Time</b>
Carol O'Bryan / Melonie Sellers				Dave Berens		04/18/18	2000

### Division/Group Assignment List (ICS 204 WF)

<b>1. Incident Name:</b>				<b>3.</b>			
34 Complex				<b>Branch:</b>		<b>Division/Group:</b>	
<b>2. Operational Period: 0800-2000</b>				<b>D</b>			
Date/Time From: 04/19/18 0800		Date/Time To: 04/19/18 2000					
<b>4. Operations Personnel</b>							
<b>AIR ATTACK SUPERVISOR</b>		Tony Defalco 4/28 Pete Koerber		<b>FIELD OPERATIONS</b>		Jeff Schardt 4/28 Dan Martin (t) 4/28	
<b>DIVISION/GROUP SUPERVISOR</b>		Greg Salansky 4/28 Jared Nobles (t) 4/28		<b>PLANNING OPERATIONS</b>		Ron Bertsh 4/28 Shawn Nagle (t) 4/28	
<b>5. Resources Assigned this Period</b>							
Strike Team / Task Force / Resource Designator		LWD	Leader	Number Persons	Drop Off PT./Time	Pick Up PT./Time	
TFLD		4/28	Max Twombly	1	0800	2000	
ENG T4 Utah Fire 14 E-15		4/30	Israel Justice	3	0800	2000	
SOF2		4/28	Buddy Kelley	1	0800	2000	
EMPF		4/29	Matt Jones	1	0800	2000	
<b>6. Control Operations/Work Assignments:</b>							
<b>Task:</b>							
<ul style="list-style-type: none"> <li>• Mop up and cold trail 1 chain in from perimeter of fire.</li> </ul>							
<b>Purpose:</b>							
<ul style="list-style-type: none"> <li>• Keep fire within current perimeter</li> </ul>							
<b>End State:</b>							
<ul style="list-style-type: none"> <li>• Fire is at least 90% contained and has not grown in size for one operational period.</li> </ul>							
<b>7. Special Instructions:</b>							
<ul style="list-style-type: none"> <li>• Practice LCES</li> <li>• Document any damage or burned structures / infrastructure with a lat/long and photo</li> <li>• Stay clear and capture any lat/long of any hazmat situation and notify immediate supervisor</li> </ul>							
<b>8. Division/Group Communication Summary</b>							
Function	Channel	Channel Name	RX Frequency N/W	RX Tone/NAC	TX Frequency N/W	TX Tone/NAC	Mode
COMMAND	1	MESA	170.45		168.1		Analog
TACTICAL	6	VTAC 13	158.7375		158.7375	156.7	Analog
AIR TO GROUND	8	A/G Primary	169.2000		169.2000		Analog
<b>9. Prepared By (Resource Unit Leader)</b>			<b>Approved By (Planning Section Chief)</b>			<b>Date</b>	<b>Time</b>
Carol O'Bryan / Melonie Sellers			Dave Berens			04/18/18	2000

### Division/Group Assignment List (ICS 204 WF)

<b>1. Incident Name:</b>			<b>3.</b>				
<b>34 Complex</b>			<b>Branch:</b>		<b>Division/Group:</b>		
<b>2. Operational Period: 0800 - 2000</b>					<b>G</b>		
Date/Time From: 04/19/18 0800		Date/Time To: 04/19/18 2000					
<b>4. Operations Personnel</b>							
<b>AIR ATTACK SUPERVISOR</b>		Tony Defalco Pete Koerber		4/28		<b>FIELD OPERATIONS</b>	
						Jeff Schardt 4/28 Dan Martin (t) 4/28	
<b>DIVISION/GROUP SUPERVISOR</b>		Matt Johnson		4/28		<b>PLANNING OPERATIONS</b>	
						Ron Bertsh 4/28 Shawn Nagle (t) 4/28	
<b>5. Resources Assigned this Period</b>							
Strike Team / Task Force / Resource Designator		LWD	Leader		Number Persons	Drop Off PT./Time	Pick Up PT./Time
TFLD		4/28	James Wettstaed		1	0800	2000
ENG T4 Dragon Fighters E-14		4/30	Matt Helgeson		3	0800	2000
EMPF		4/29	Eddy Rowell		1	0800	2000
<b>6. Control Operations/Work Assignments:</b>							
<b>Task:</b>							
<ul style="list-style-type: none"> <li>Mop up and cold trail 1 chain in from perimeter of fire.</li> </ul>							
<b>Purpose:</b>							
<ul style="list-style-type: none"> <li>Keep fire within current perimeter</li> </ul>							
<b>End State:</b>							
<ul style="list-style-type: none"> <li>Fire is at least 90% contained and has not grown in size for one operational period.</li> </ul>							
<b>7. Special Instructions:</b>							
<ul style="list-style-type: none"> <li>Practice LCES</li> <li>Document any damage or burned structures / infrastructure with a lat/long and photo</li> <li>Stay clear and capture any lat/long of any hazmat situation and notify immediate supervisor</li> </ul>							
<b>8. Division/Group Communication Summary</b>							
Function	Channel	Channel Name	RX Frequency N/W	RX Tone/NAC	TX Frequency N/W	TX Tone/NAC	Mode
COMMAND	1	MESA	170.45		168.1		Analog
COMMAND	2	BRY SIN	169.375		164.7125		Analog
TACTICAL	7	VTAC 14	159.4725		159.4725	156.7	Analog
AIR TO GROUND	8	A/G Primary	169.2000		169.2000		Analog
<b>9. Prepared By (Resource Unit Leader)</b>			<b>Approved By (Planning Section Chief)</b>			<b>Date</b>	<b>Time</b>
Carol O'Bryan / Melonie Sellers			Dave Berens			04/18/18	2000



## Division/Group Assignment List (ICS 204 WF)

<b>1. Incident Name:</b>				<b>3.</b>			
<h1>34 Complex</h1>				<b>Branch:</b>		<b>Division/Group:</b>  <h1 style="text-align: center;">J</h1>	
<b>2. Operational Period: 0800 - 2000</b>							
Date/Time From: 04/19/18 0800		Date/Time To: 04/19/18 2000					
<b>4. Operations Personnel</b>							
<b>AIR ATTACK SUPERVISOR</b>		Tony Defalco Pete Koerber		4/28		<b>FIELD OPERATIONS</b>	
						Jeff Schardt 4/28 Dan Martin (t) 4/28	
<b>DIVISION/GROUP SUPERVISOR</b>		Tom Crews		4/28		<b>PLANNING OPERATIONS</b>	
						Ron Bertsh 4/28 Shawn Nagle (t) 4/28	
<b>5. Resources Assigned this Period</b>							
Strike Team / Task Force / Resource Designator			LWD	Leader	Number Persons	Drop Off PT./Time	Pick Up PT./Time
TFLD			4/27	Tony Collins	1	0800	2000
ENG T4	Heat Seeker 18	E-13	4/30	Dustin Johnson	3	0800	2000
ENG T6	Griffith	E-4	4/30	William Griffith	3	0800	2000
SOF2			4/30	Randy Miller	1	0800	2000
<b>6. Control Operations/Work Assignments:</b>							
<b>Task:</b>							
<ul style="list-style-type: none"> <li>Mop up and cold trail 1 chain in from perimeter of fire.</li> </ul>							
<b>Purpose:</b>							
<ul style="list-style-type: none"> <li>Keep fire within current perimeter</li> </ul>							
<b>End State:</b>							
<ul style="list-style-type: none"> <li>Fire is at least 90% contained and has not grown in size for one operational period.</li> </ul>							
<b>7. Special Instructions:</b>							
<ul style="list-style-type: none"> <li>Practice LCES</li> <li>Document any damage or burned structures / infrastructure with a lat/long and photo</li> <li>Stay clear and capture any lat/long of any hazmat situation and notify immediate supervisor</li> </ul>							
<b>8. Division/Group Communication Summary</b>							
Function	Channel	Channel Name	RX Frequency N/W	RX Tone/NAC	TX Frequency N/W	TX Tone/NAC	Mode
COMMAND	1	MESA	170.45		168.1		Analog
COMMAND	3	FT SUPPLY	159.39		151.28	94.8	Analog
TACTICAL	5	VTAC 11	151.1375		151.1375	156.7	Analog
AIR TO GROUND	8	A/G Primary	169.2000		169.2000		Analog
<b>9. Prepared By (Resource Unit Leader)</b>				<b>Approved By (Planning Section Chief)</b>		<b>Date</b>	
Carol O'Bryan / Melonie Sellers				Dave Berens		04/18/18	
						<b>Time</b> 2000	

## Division/Group Assignment List (ICS 204 WF)

<b>1. Incident Name:</b>			<b>3.</b>				
<b>34 Complex</b>			<b>Branch:</b>		<b>Division/Group:</b>		
<b>2. Operational Period: 0800 - 2000</b>					<b>Structure Protection</b>		
Date/Time From: 04/19/18 0800		Date/Time To: 04/19/18 2000					
<b>4. Operations Personnel</b>							
<b>AIR ATTACK SUPERVISOR</b>		Tony Delfalco 4/28 Pete Koerber		<b>FIELD OPERATIONS</b>		Jeff Schardt 4/28 Dan Martin (t) 4/28	
<b>DIVISION/GROUP SUPERVISOR</b>		Randy Jones 4/28 Jason Klawinsky (t) 4/28		<b>PLANNING OPERATIONS</b>		Ron Bertsh 4/28 Shawn Nagle (t) 4/28	
<b>5. Resources Assigned this Period</b>							
Strike Team / Task Force / Resource Designator	LWD	Leader	Number Persons	Drop Off PT./Time	Pick Up PT./Time		
<b>6. Control Operations/Work Assignments:</b>							
<b>Task:</b>							
<ul style="list-style-type: none"> <li>Assess and plan for structure protection.</li> </ul>							
<b>Purpose:</b>							
<ul style="list-style-type: none"> <li>Identify and capture tactical measures to mitigate any threats to infrastructure.</li> </ul>							
<b>End State:</b>							
<ul style="list-style-type: none"> <li>Contingency plan for structure protection.</li> </ul>							
<b>7. Special Instructions:</b>							
<ul style="list-style-type: none"> <li>Practice LCES</li> <li>Document any damage or burned structures / infrastructure with a lat/long and photo</li> <li>Stay clear and capture any lat/long of any hazmat situation and notify immediate supervisor</li> <li>Access structures and infrastructure east of Highway 34 and south of Highway 412</li> </ul>							
<b>8. Division/Group Communication Summary</b>							
Function	Channel	Channel Name	RX Frequency N/W	RX Tone/NAC	TX Frequency N/W	TX Tone/NAC	Mode
COMMAND	1	MESA	170.45		168.1		Analog
TACTICAL	5	VTAC 11	151.1375		151.1375	156.7	Analog
AIR TO GROUND	8	A/G Primary	169.2000		169.2000		Analog
<b>9. Prepared By (Resource Unit Leader)</b>			<b>Approved By (Planning Section Chief)</b>			<b>Date</b>	<b>Time</b>
Carol O'Bryan / Melonie Sellers			Dave Berens			04/18/18	2000

### Division/Group Assignment List (ICS 204 WF)

<b>1. Incident Name:</b>			<b>3.</b>				
<b>34 Complex</b>			<b>Branch:</b>		<b>Division/Group:</b>  <b>Initial Attack</b>		
<b>2. Operational Period: 0700-1900</b>							
Date/Time From: 04/19/18 0800		Date/Time To: 04/19/18 2000					
<b>4. Operations Personnel</b>							
<b>AIR ATTACK SUPERVISOR</b>		Tony Delfalco 4/28 Pete Koerber		<b>FIELD OPERATIONS</b>		Jeff Schardt 4/28 Dan Martin (t) 4/28	
<b>DIVISION/GROUP SUPERVISOR</b>		Heath Thomas 4/28 Mike Brod (t) 4/29		<b>PLANNING OPERATIONS</b>		Ron Bertsh 4/28 Shawn Nagle (t) 4/28	
<b>5. Resources Assigned this Period</b>							
Strike Team / Task Force / Resource Designator		LWD	Leader	Number Persons	Drop Off PT./Time	Pick Up PT./Time	
ENG T4 BLM E-12		4/30	Laif Morrison	3	0800	2000	
EMPF		4/28	John Dunzweiler	1	0800	2000	
<b>6. Control Operations/Work Assignments:</b>							
<b>Task:</b>							
<ul style="list-style-type: none"> <li>• Provide for assistance to requests for initial attack by Oklahoma Forestry Services and cooperators.</li> </ul>							
<b>Purpose:</b>							
<ul style="list-style-type: none"> <li>• Keep fire within perimeter.</li> </ul>							
<b>End State:</b>							
<ul style="list-style-type: none"> <li>• Fire is at least 90% contained and has not grown in size for one operational period.</li> </ul>							
<b>7. Special Instructions:</b>							
<ul style="list-style-type: none"> <li>• Practice LCES</li> <li>• Stay clear and capture any lat/long of any hazmat situation and notify immediate supervisor</li> </ul>							
<b>8. Division/Group Communication Summary</b>							
Function	Channel	Channel Name	RX Frequency N/W	RX Tone/NAC	TX Frequency N/W	TX Tone/NAC	Mode
COMMAND	1	MESA	170.45		168.1		Analog
TACTICAL	6	VTAC 13	158.7375		158.7375	156.7	Analog
AIR TO GROUND	9	VTAC 12	154.4525		154.4525	156.7	Analog
<b>9. Prepared By (Resource Unit Leader)</b>			<b>Approved By (Planning Section Chief)</b>		<b>Date</b>		<b>Time</b>
Carol O'Bryan / Melonie Sellers			Dave Berens		04/18/18		2000

## Division/Group Assignment List (ICS 204 WF)

<b>1. Incident Name:</b>			<b>3.</b>				
34 Complex			<b>Branch:</b>		<b>Division/Group:</b>		
<b>2. Operational Period: 2000 - 0800</b>					Night Shift		
Date/Time From: 04/19/18 2000		Date/Time To: 04/19/18 0800					
<b>4. Operations Personnel</b>							
AIR ATTACK SUPERVISOR		Tony Delfalco 4/28 Pete Koerber		FIELD OPERATIONS		Jeff Schardt 4/28 Dan Martin (t) 4/28	
DIVISION/GROUP SUPERVISOR		Jerry Anderson 4/28 Dennis Gaston (t) 4/29		PLANNING OPERATIONS		Ron Bertsh 4/28 Shawn Nagle (t) 4/28	
<b>5. Resources Assigned this Period</b>							
Strike Team / Task Force / Resource Designator			LWD	Leader	Number Persons	Drop Off PT./Time	Pick Up PT./Time
ENG T3	Truckee Meadows	E-71	4/29	Ryan Rizzuto	4	2000	0800
ENG T6	Scholl Fire & Fuels	E-10	4/29	Eric Pritchard	3	2000	0800
<b>6. Control Operations/Work Assignments:</b>							
<b>Task:</b>							
<ul style="list-style-type: none"> <li>Be available to respond to needs during nighttime operational period.</li> </ul>							
<b>Purpose:</b>							
<ul style="list-style-type: none"> <li>Keep fire within perimeter.</li> </ul>							
<b>End State:</b>							
<ul style="list-style-type: none"> <li>Fire is at least 90% contained and has not grown in size for one operational period.</li> </ul>							
<b>7. Special Instructions:</b>							
<ul style="list-style-type: none"> <li>Practice LCES</li> <li>Stay clear and capture any lat/long of any hazmat situation and notify immediate supervisor</li> </ul>							
<b>8. Division/Group Communication Summary</b>							
Function	Channel	Channel Name	RX Frequency N/W	RX Tone/NAC	TX Frequency N/W	TX Tone/NAC	Mode
COMMAND	1	MESA	170.45		168.1		Analog
TACTICAL	4	VCALL 10	155.7525		155.7525	156.7	Analog
AIR TO GROUND	8	A/G Primary	169.2000		169.2000		Analog
<b>9. Prepared By (Resource Unit Leader)</b>			<b>Approved By (Planning Section Chief)</b>			<b>Date</b>	<b>Time</b>
Carol O'Bryan / Melonie Sellers			Dave Berens			04/18/18	2000

## Division/Group Assignment List (ICS 204 WF)

<b>1. Incident Name:</b>			<b>3.</b>				
<h1>34 Complex</h1>			<b>Branch:</b>		<b>Division/Group:</b> <h1 style="text-align: center;">Rhea Fire</h1>		
<b>2. Operational Period: 0800 - 2000</b>							
Date/Time From: 04/19/18 0800		Date/Time To: 04/19/18 2000					
<b>4. Operations Personnel</b>							
<b>AIR ATTACK SUPERVISOR</b>				<b>FIELD OPERATIONS</b>			
<b>DIVISION/GROUP SUPERVISOR</b>				<b>PLANNING OPERATIONS</b>			
<b>5. Resources Assigned this Period</b>							
Strike Team / Task Force / Resource Designator		LWD	Leader		Number Persons	Drop Off PT./Time	Pick Up PT./Time
TFLD		3/1	Josh Hernandez		1	0800	2000
ENG T3 Lefthand		E-17 4/28	Melissa Friess		3	0800	2000
ENG T6 Pat-Rick B56463		E-5 4/29	Benjamin Castle		2	0800	2000
ENG T6 Pat-Rick C44474		E-8 4/29	Charles Perkins		2	0800	2000
ENG T6 Don Crane		E-3 4/29	Don Crane		2	0800	2000
ENG T6 MSN XR		E-7 4/30	Waymon Fondren		3	0800	2000
ENG T6 Attack One		E-9 4/30	David Knowles		3	0800	2000
<b>6. Control Operations/Work Assignments:</b>							
<b>Task:</b>							
<ul style="list-style-type: none"> <li>Provide resources to the Rhea Fire</li> </ul>							
<b>Purpose:</b>							
<ul style="list-style-type: none"> <li>To implement collaborative sharing of resources</li> </ul>							
<b>End State:</b>							
<ul style="list-style-type: none"> <li>Resources will be utilized for wildland fire operations at the Rhea Fire.</li> </ul>							
<b>7. Special Instructions:</b>							
<ul style="list-style-type: none"> <li>Travel to Taloga for briefing at 0800 to receive operational assignments for 4/19 – 4/21/18</li> <li>See Rhea Fire Communications Plan for radio frequencies.</li> </ul>							
*** Taloga Briefing Location** 698 West Ruble Ave Taloga, OK							
<b>8. Division/Group Communication Summary</b>							
Function	Channel	Channel Name	RX Frequency N/W	RX Tone/NAC	TX Frequency N/W	TX Tone/NAC	Mode
COMMAND							
TACTICAL							
AIR TO GROUND							
<b>9. Prepared By (Resource Unit Leader)</b>			<b>Approved By (Planning Section Chief)</b>		<b>Date</b>		<b>Time</b>
Carol O'Bryan / Melonie Sellers			Dave Berens		04/18/18		2000

# AIR OPERATIONS SUMMARY

OPERATIONAL PERIOD DATE: 04-19- 2018

0800-2000

<b>1. INCIDENT NAME:</b> 34 Complex	<b>2. PREPARED BY:</b> Bruce Wicks <b>PREPARED DATE/TIME:</b> 04/18/2018 1850	<b>3. Sunrise:</b> 0659 <b>Sunset:</b> 2015
<b>4. REMARKS (Safety Notes, Hazards, Air Operations Special Equipment., etc.):</b> Medivac Aircraft: <b>Air Evac</b> Do not over fly structures with external load missions.  All aircraft will use strobes and running lights in smoky conditions. Hazards: Snags, non-incident aircraft, and winds. <u>Squawk 1255</u> <u>Cease all operations at sunset</u>		<b>5.</b>  New TFR 8/0045 polygon, 6000 MSL, hours of operation 0900-2000 CST

6. PERSONNEL	Phone	7. FREQUENCIES	AM	FM	8. FIXED WING	FAA#/Base
AOBD---Bruce Wicks ASGS---Pete Kubiak	530-906-2224 404-661-4819	Air/Air Rotor Air/Air Fixed Wing	118.9250 119.9500			Air Attack  AC 690 N848CE – AVK  Air Attack AC 500B – N500FT – AVK
ATGS: Pete Koerber – 8CE ATGS: Tony DeFalco – 0FT	530-277-9261 702-592-9215	Air/Ground Primary Air/Ground For IA (VTAC 12)		169.2000  154.4525 TX 156.7		
<u>Woodward Helibase (WWR)</u> HEB2 John Bragg	423-483-2798	National Flight Following		168.650 TX 110.9		
HMGB 612CK J.R. Sullivan	210-396-3304					
HMGB 135BH Billy Groves	406-407-1521					
		Air/Guard  Deck		168.6250 RX/TX Tone 110.9  163.100		

**9. HELICOPTERS (Use Additional Sheets As Necessary)**

FAA N# or Designator	TY	MAKE/MODEL	BASE	START	REMARKS	FAA N# or Designator	TY	MAKE/MODEL	BASE	START	REMARKS
612 CK	1	SH3H	WWR	0930	State resource						
135BH	1	S-70	WWR	0930	State resource						

TYPE/FUNCTION	NAME OF PERSONNEL OR CARGO (if applicable) OR INSTRUCTIONS FOR TACTICAL AIRCRAFT	MISSION START	FLY FROM	FLY TO
Water Drops	As Requested	0930	Woodward HB	Fire

# 34 Complex

Incident Action Plan  
Thursday 4/19/2018

## Health and Safety Message

Incident: 34 Complex	Date 4/19/2018	Operational Period Day: 0800--2000	Operational Period Night 2000--0800
-------------------------	-------------------	---------------------------------------	----------------------------------------

### Major Hazards and Risks:

#### Escape Routes and Safety Zones

#### Fire Behavior

#### Oil/Gas Sites

#### Driving

**Escape Routes and Safety Zones:** On any fire, escape routes and safety zones must be located, evaluated, and reevaluated as conditions change. Communicate any new locations to all resources.

**Extreme Fire Behavior:** LCES at all times. High winds and spotting. Maintain situational awareness. Have a plan. Attack from the black. Have communication with other resources. Know your escape route as the situation changes.

**Oil/Gas Sites:** Numerous sites, exposed and covered pipe lines, and wind mills are inside fire perimeter. Windssock marked areas may indicate presence of highly toxic gases Stay upwind of these.

**Driving:** Lights on, obey speed limits, seat belts, school bus traffic, school zones, town traffic, dusty dirt roads, high winds, night driving, wildlife and cows crossing roads, etc. There are an abundant amount of driving hazards on this incident. Drive defensively at all times.

**Standard Order #10 – Fight Fire aggressively, having provided for safety first.**

*LOOKOUTS*

*COMMUNICATIONS*

*ESCAPE ROUTES*

*SAFETY ZONES*

Safety Officers: Larry Holsomback, Mark Sullivan, Buddy Kelley, Randy Miller

*Think safety first in all actions*

## INCIDENT SAFETY ANALYSIS 215a

34 Complex - Wednesday, April 18, 2018

8. Location	9. Hazard	6. Control or Abatement Action (Engineering, Administrative, PPE, Avoidance, Education, etc)
All	Air Operations	<ul style="list-style-type: none"> <li>~ Follow " Aviation Watch-Out Situations" on page 44, IRPG.</li> <li>~ Don't plan on air resources for medical transport or resupply.</li> <li>~ Refer to page 57, IRPG for directing bucket drops.</li> <li>~ Ensure positive communication with all air resources.</li> </ul>
All	Extreme Fire Behavior	<ul style="list-style-type: none"> <li>~ Share weather observations with all personnel assigned to division.</li> <li>~ Establish "Trigger Points" to withdraw.</li> <li>~ Use "Risk Management" process prior to engaging in suppression actions, refer to page 1, IRPG.</li> <li>~ Establish and follow LCES at all times</li> </ul>
All	Power Utilities	<ul style="list-style-type: none"> <li>~ Notify all personnel of down electrical lines</li> <li>~ Always treat downed wires as energized.</li> <li>~ Identify and avoid high pressure natural gas lines.</li> <li>~ Be aware of utility restoration in your work area.</li> </ul>
IA	Initial Attack	<ul style="list-style-type: none"> <li>~ Follow Risk Management guidelines in IRPG page 1.</li> <li>~ Provide through briefing.</li> <li>~ Coordinate with operations</li> <li>~ Establish L.C.E.S. before engagement.</li> </ul>
All	Driving & Traffic	<ul style="list-style-type: none"> <li>~ Practice "Defensive Driving" techniques traveling on all roads and city streets.</li> <li>~ Watch for School Zone</li> <li>~ Observe posted speed limits.</li> <li>~ Avoid distractions (eating, cell phones, radio).</li> <li>~ Ensure that windshields are kept clean of dust and bugs.</li> </ul>
All	Hazard Trees	<ul style="list-style-type: none"> <li>~ Follow "Hazard Tree Safety" guidelines, IRPG page 22.</li> <li>~ Mitigate hazards by flagging off or removing dangerous snags.</li> <li>~ In areas that work must be performed, post lookouts, or use a spotter in mop-up areas with personnel.</li> <li>~ Don't park vehicles or take breaks in high concentrations of hazard trees.</li> <li>~ Establish trigger points for disengagement during high wind events.</li> <li>~ Remember that the hazard zone extends a minimum of 2 1/2 tree heights.</li> </ul>
All	Oil & Gas Lines	<ul style="list-style-type: none"> <li>~ Identify sites, Wind Socks indicate presence of Highly Toxic Gases, Stay up Wind.</li> <li>~ Do not depend on sense of smell for warning.</li> <li>~ Park at least 50 feet away from facilities and equipment.</li> <li>~ Avoid low lying areas during stagnant air conditions.</li> <li>~ Be Aware of exposed or shallow buried pipes and utilities.</li> </ul>
All	Heavy Equipment Operations	<ul style="list-style-type: none"> <li>~ Ensure communications are established with operators.</li> <li>~ Use hand signals if other communications are unavailable.</li> <li>~ Maintain a 50'-100' exclusion area around equipment and increase it to 1 1/2 times tree height when in timber.</li> <li>~ Use a spotter when backing.</li> <li>~ Avoid working below heavy equipment.</li> </ul>
All	Communications	<ul style="list-style-type: none"> <li>~ Maintain communication with aviation resources, and suppression organization.</li> <li>~ Ensure all know frequency and protocol for contacting resources.</li> <li>~ Utilize the ICS 205.</li> <li>~ Utilize human repeaters when working in dead spots.</li> </ul>
All	Medical Extraction (Air) >3 hours	<ul style="list-style-type: none"> <li>~ Approved, Adequate Extraction points are identified, approved known and re-assessed as needed.</li> <li>~ Ensure Adequate ALS in appropriate locations to respond</li> <li>~ Pre-identify incident and local emergency air response and capability</li> </ul>
All	Medical Extraction (ground >3 hours)	<ul style="list-style-type: none"> <li>~ Approved Adequate Extraction points are identified and approved, known and reassessed as needed.</li> <li>~ Ensure adequate ALS is in appropriate locations to respond</li> <li>~ Consider air extraction if available</li> </ul>
All	Night Operations	<ul style="list-style-type: none"> <li>~ Maintain high visibility in work area.</li> <li>~ Avoid all cross country travel with vehicles.</li> <li>~ Ensure personnel have a personal light (headlamp).</li> <li>~ Watch for signs of fatigue.</li> <li>~ Take breaks away from areas of known hazard.</li> </ul>
All	Structure Protection & HAZMAT	<ul style="list-style-type: none"> <li>~ Review "Wildland Urban Interface" Watch outs, IRPG page 12.</li> <li>~ Use "Structure Assessment" checklist, IRPG pages 12-16.</li> <li>~ Follow "HAZMAT Incident Operations" on pages 34-36 in IRPG.</li> </ul>
All	Wildlife & Livestock	<ul style="list-style-type: none"> <li>~ Watch out for wildlife &amp; livestock inside fire area and along roadways.</li> <li>~ Clean up all debris and trash during each operational period.</li> </ul>



<b>MEDICAL PLAN</b>	1. Incident Name 34 Complex	2. Date Prepared 04/18/18	3. Time Prepared 1300	4. Operational Period <b>Day Shift - Night shift 4/19/18</b>					
5. Incident Medical Aid Station									
Medical Aid Stations		Location			Paramedics Yes No				
Jeff Cummings EMTF	317-730-6653	ICP 108 Temple Houston Dr, Woodward, Ok				X			
Patrick Horan EMPF	303-641-1137	Division A			X				
Wilson Rowell EMPF	334-504-2608	Division G			X				
John Dunzweiler EMPF	606-594-1627	Division J			X				
Matt Jones EMPF	360-824-1360	Division D			X				
6. Transportation									
A. Air Ambulance Services									
Name		Address		Phone	Paramedics Yes No Tail Number				
Air Evac Life Team Bell 206		1620 Santa Fe, Woodward, OK 73801		<b>1-800-247-3822</b>	X	<b>N130AE</b>			
<b>(NO wind gust spread exceeding 18mph)</b>		<b>(NO winds over 45mph)</b>							
B. Incident Ambulances									
Name		Location			Paramedics Yes No Call Sign				
Woodward County EMS		ICP 108 Temple Houston Dr, Woodward, OK			X	S-43			
Stacie Brunner EMTB		<b>580-216-0874</b>				X			
Marty Gramh EMTP		<b>580 -216-0081</b>			X				
7. Hospitals									
Name		Address		Travel Time Air Ground		Phone	Helipad Yes No	Burn Center Yes No	
University Medical Center		700 NE 13th, Lincoln Ave, OKC Level 1 Trauma		60 min	120m	405-271-4700	X		X
Integrus Baptist Medical Center		3300 NW EXPRY OKC Burn Center/Level 3		60 min	120m	405-949-3011	X	X	
St. Mary's Regional		305 S. 5th Enid, OK Trauma/Level 3		30 min	90 min	580-233-6100	X		X
Integrus Bass		600 S. Monroe, Enid, OK Cardiac/Level 3		30 min	90 min	580-233-2300	X		X
Alliance Health Woodward		1620 Santa Fe, Woodward, OK General/Level 3		15 min	20 min	877-863-9595	X		X
** Note: Air transport times are from the incident to the hospital only. Does not include flight time to the incident **									
8. Medical Emergency Procedures									
<ol style="list-style-type: none"> <li>1. Patient or nearest responder will notify Supervisor of the injury.</li> <li>2. The Supervisor will become the Incident-Within-the Incident Commander (IWI).</li> <li>3. IWI Commander will notify the nearest medical responder and ICP communications of the Incident</li> <li>4. IWI Commander will initiate the Nine Line Medical Incident Report attached to the 206 Form</li> </ol>									
Prepared by (Medical Unit Leader) Jeff Cummings MEDL					10. Reviewed by (Safety Officer) Larry Holsomback, SOF2				

# 34 Complex Incident Hazardous Weather Plan

## **Notification Process**

The primary concerns for this plan is preparedness in event of a tornado or hail storm with large hail. Parts of this plan may be used in the aftermath of an earth quake or flood.

IMET (the weather person) will be in contact with OEM (Office of Emergency Management) or the NWS Norman OK. In event that it is determined that hazardous weather is eminent the IMET will notify the IC of areas of potential threat.

In event injury or damage the event will be handles as an incident within an incident using the 9- line process.

## **Tornadoes/Lighting:**

**ICP:** In event there is a threat to the Incident Command Post, Section Chiefs will move their personnel to designated safe areas (see attached map). These areas are reported to have been designed to withstand some amount of wind. After the threat has passed and damage has occurred, all personnel will assemble in the parking lot between the ICP and the Rodeo Arena. Section Chiefs will roll call to determine the presents of all personnel.

**Fire line and vicinity:** If the threat is to the personnel on the fire line or vicinity, communications will notify operations and all personnel affected by the threat. Division Supervisors will identify potential safety areas and gathering areas to roll call personnel after the threat has passed.

## **Hail Storms/Lighting:**

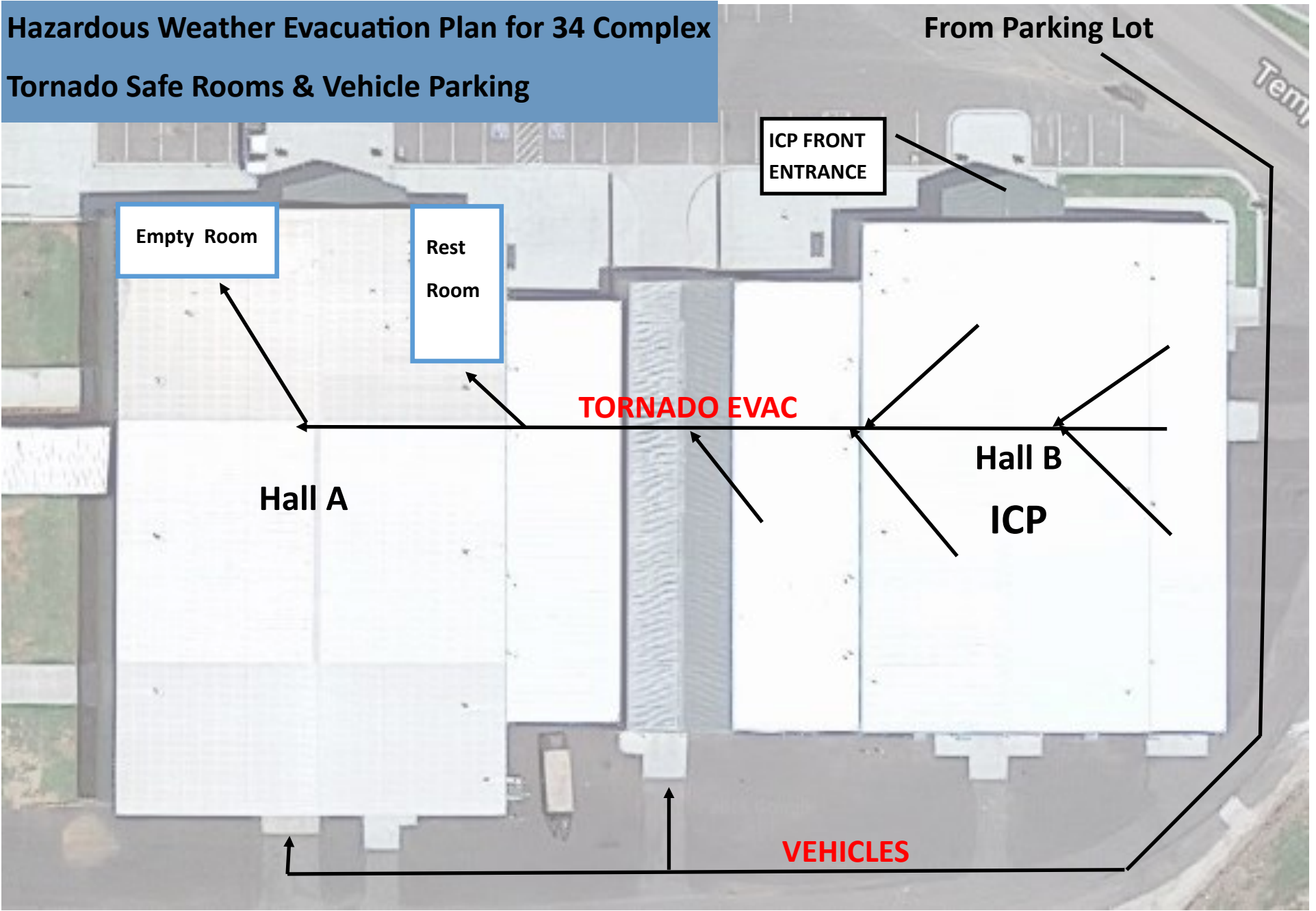
**ICP:** Notifications will be made of the approaching threat. Personnel are to be advised to stay indoors. Of secondary concern is damage to incident vehicles. Safe areas indoors have been identified for vehicle parking (see attached map). Organization will be directed by logistics for parking.

**Fire line and vicinity:** Notifications will be made of the approaching threat. Division Supervisors will move personnel to areas of shelter. If feasible locate shelter for incident vehicles.

**Medical:** In the event of injury the established process of rescue, recovery, and treatment of injury will apply. Supervisors will be notified of injuries or fatalities. The nine line (the process of how to organize a medical emergency or response) will be used to organize the rescue response.

**As is mandatory in the wildland fire environment, planning, risk assessment, and execution is the key to safety. Don't wait until the black cloud is over your head to make a plan.**

**Hazardous Weather Evacuation Plan for 34 Complex  
Tornado Safe Rooms & Vehicle Parking**



INCIDENT RADIO COMMUNICATIONS PLAN			1. Incident Name		2. Date Time Prepared		3. Operational Period Date/Time		
			34 COMPLEX		4/18/2018 1400		4/18/18-4/19/18 1600-0600		
<b>4. Basic Radio Channel Utilization</b> Mode: W= Wideband, N= Narrowband, D= Digital, M= Mixed									
CHAN NAME	CH #	Function	Frequency	Tone/NAC	Mode	TXID	Assignment	Remarks	
MESA	1	COMMAND	RX: 170.45 TX: 168.1		Analog		ALL DIVISIONS	MESA and BRY SIN LINKED	
BRY SIN	2	COMMAND	RX: 169.375 TX: 164.7125		Analog		G and Southern Area		
FT SUPPLY	3	COMMAND	RX: 159.39 VTAC: 151.28	94.8	Analog		DIVISION J		
VCALL 10	4	TAC	RX: 155.7525 TX: 155.7525	156.7	Analog		A, NIGHT SHIFT		
VTAC 11	5	TAC	RX: 151.1375 TX: 151.1375	156.7	Analog		J, STRUCTURE PROTECTION		
VTAC 13	6	TAC	RX: 158.7375 TX: 158.7375	156.7	Analog		D, INTIAL ATTACK		
VTAC 14	7	TAC	RX: 159.4725 TX: 159.4725	156.7	Analog		G		
A/G PRI	8	A/G	RX: 169.2 TX: 169.2		Analog				
VTAC 12	9	A/G	RX: 154.4525 TX: 154.4525	156.7	Analog		INITIAL ATTACK		
	10		RX: TX:		Analog				
	11		RX: TX:		Analog				
	12		RX: TX:		Analog				
	13		RX: TX:		Analog				
	14		RX: TX:		Analog				
	15		RX: TX:		Analog				
AIR GUARD	16	AIR GUARD	RX: 168.6250 TX: 168.6250	110.9	Analog				
5. Prepared by (Communications Unit)									
TERRY BRINSON COML									

*Note: This is not a standard NWCG ICS205 Form*

**34 COMPLEX INTIAL ATTACK DISPATCH PROCEDURES**

If any field unit observes a potential new start, they should proceed to the area  
Of the new start to obtain as exact a location as possible along with other  
pertinent information. This to include Lat and Long, road, address, landmark, etc  
Along with as much a size up as possible such as acreage, fuel type, direction of  
movement, etc.

That will give responding units a good location.

After obtaining information call 34 Complex Communications at below numbers  
as indicated to supply fire information.

**34 COMPLEX COMMUNICATIONS**

Day Shift 0700 to 2100            406-581-2741

Night Shift 2100 to 0700        720-323-9070

we

**FIRE NAME** \_\_\_\_\_

**IC** \_\_\_\_\_

**LOCATION**

**STR** \_\_\_\_\_

**LAT AND LONG**

**SIZE**

**UP** \_\_\_\_\_

**Any other useful information such as landmarks**

\_\_\_\_\_  
\_\_\_\_\_

## Human Resource Message

The mission of the Gold Team is to safely, effectively and efficiently manage the 34 Complex by maintaining a team of skilled and productive personnel.

During this incident we will strive to successfully complete our mission and achieve our objectives while creating a positive, drug and alcohol free work environment for all assigned incident personnel.

The Gold Team fully supports EEO and will not tolerate sexual harassment or any form of discrimination!

All inappropriate behavior will be dealt with promptly. Disciplinary action and reporting back to an individual's home unit will be initiated as necessary.

Please report any incidents of inappropriate behavior to your supervisor, Danny Bryant or myself immediately.

*Steve Parrish,* Incident Commander



## **34 Complex Complex Incident Driving**

These standards address driving by personnel actively engaged in wildland fire or all-hazards response activities, including driving while assigned to a specific incident or during initial attack fire response (includes time required to control the fire and travel to a rest location). In the absence of more restrictive agency policy, these guidelines will be followed during mobilization and demobilization as well. Individual agency driving policies shall be consulted for all other non-incident driving.

Agency resources assigned to an incident or engaged in initial attack fire response will adhere to the current agency work/rest policy for determining length of duty-day.

- No driver will drive more than 10 hours (behind the wheel) within any duty-day.
- Multiple drivers in a single vehicle may drive up to the duty-day limitation provided no driver exceeds the individual driving (behind the wheel) time limitation of 10 hours.
- a driver shall drive only if they had at least 8 consecutive hours off duty before beginning shift.

It is NWCG policy for all demobed resources to arrive at the home unit by 2200.



# 34 Complex Fire

## How to reach us!

Public Information Phone: 405-730-9107

Email: [OK34ComplexFire@gmail.com](mailto:OK34ComplexFire@gmail.com)

Follow us and tell your friends and families back home!

Facebook: <https://www.facebook.com/OklahomaForestry/>

Twitter: <https://twitter.com/OKForestService>

<https://inciweb.nwcg.gov/incident/5747/>

---

## Attention Firefighters!! WE NEED PICTURES!

(fire, individuals, groups, equipment)

Make sure everyone is wearing PPE, and tell us who you are, what you're doing, and where!

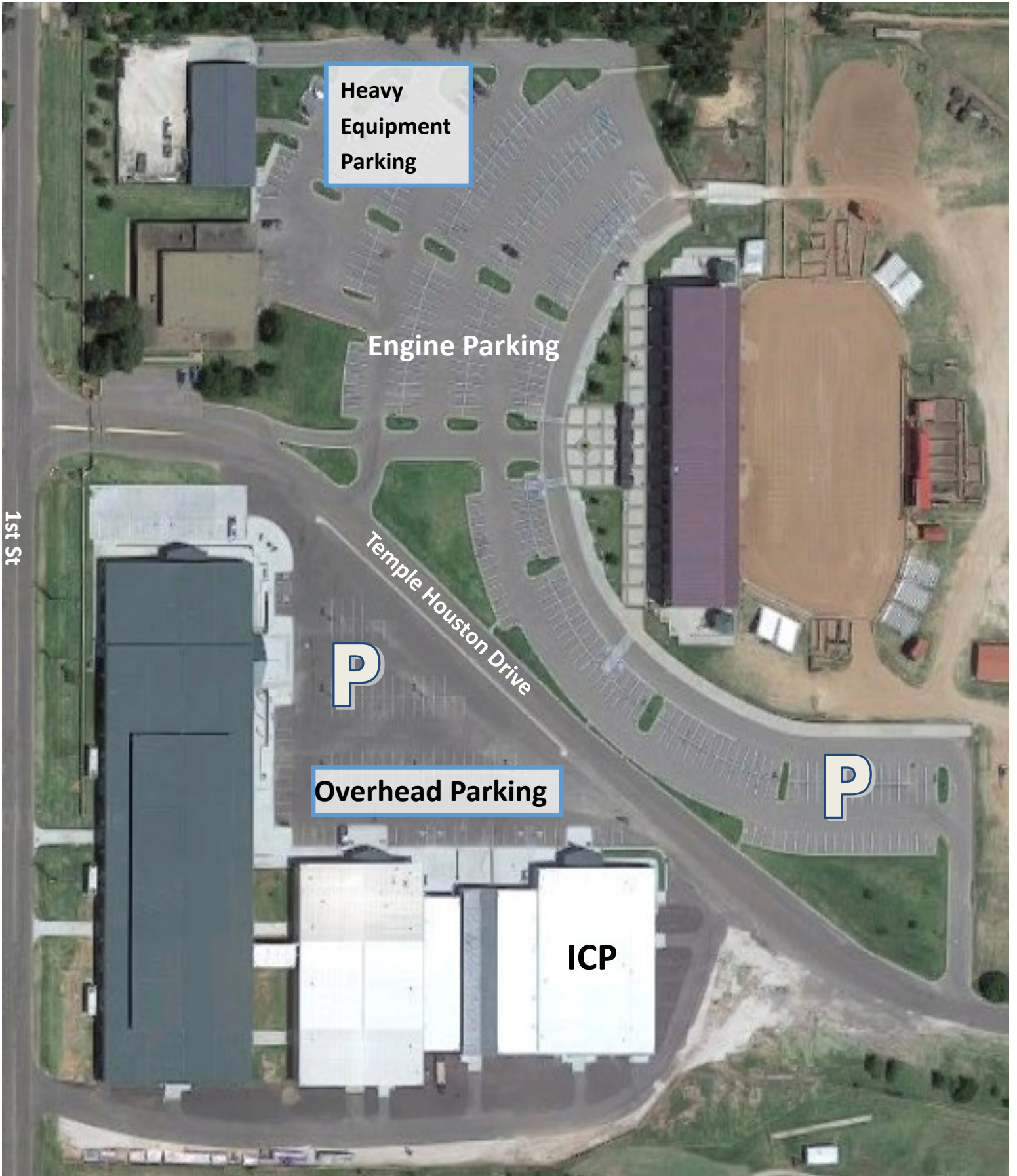
## Send by email or text (or drop by Info Shop!)

Email: [OK34ComplexFire@gmail.com](mailto:OK34ComplexFire@gmail.com)

Text: 252-423-0815

## HELP US TELL YOUR STORY!!





# 34 Complex ICP Parking





**Main Entrance**

**Restrooms**

**Public Information**

**Ground Support**

**Air Ops**  
**Safety**  
**Operations**

**Resources**

**Briefing**

**Ordering Supply Facilities Logistics**

**Check—In**  
**Demob**  
**Training**

**Finance**

**Incident Command**

**Communica-tions**

**Plans**

**Situation**

**ITSS**

**Supply**



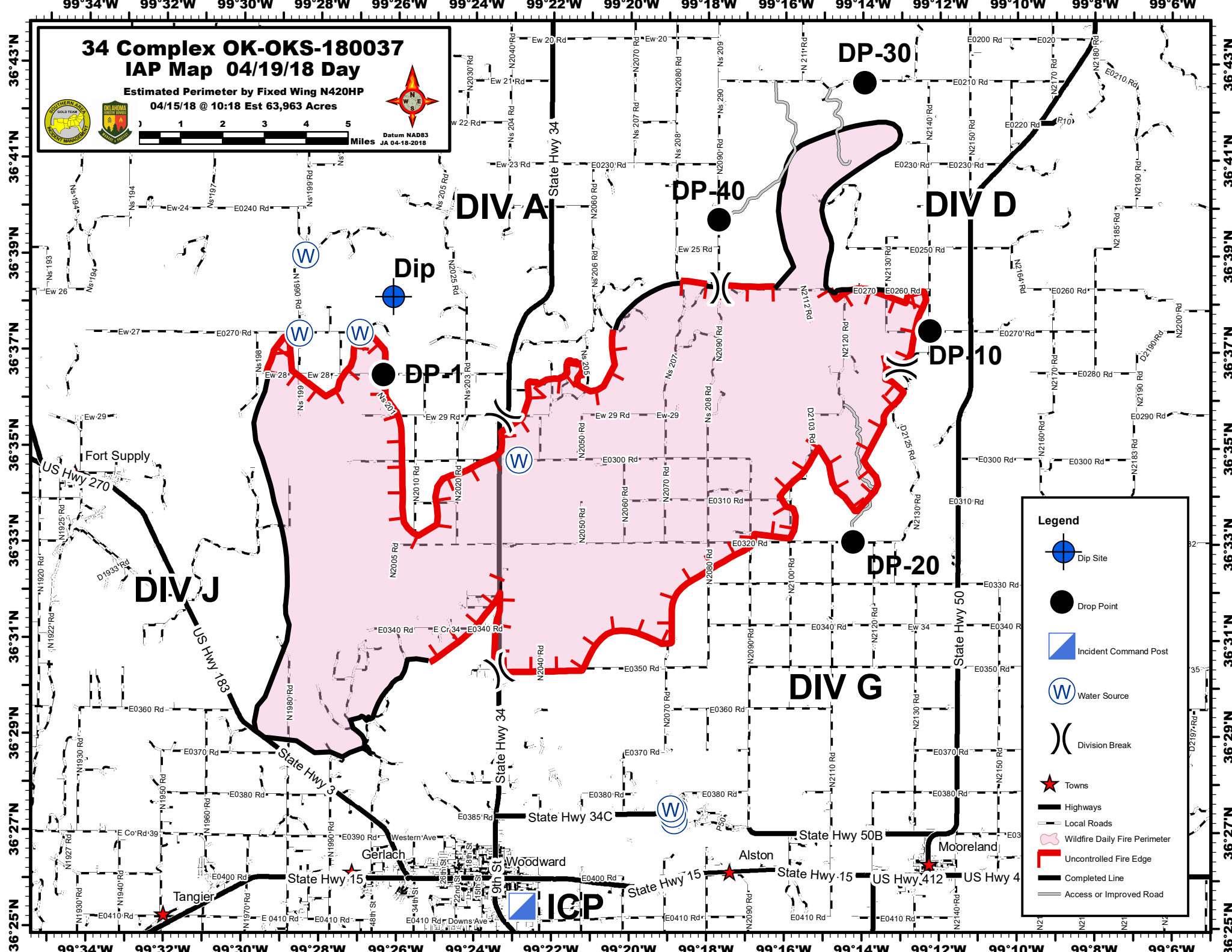
**Medical**

# 34 Complex OK-OKS-180037 IAP Map 04/19/18 Day

Estimated Perimeter by Fixed Wing N420HP  
04/15/18 @ 10:18 Est 63,963 Acres



Datum NAD83  
JA 04-18-2018



### Legend

- Dip Site
- Drop Point
- Incident Command Post
- Water Source
- Division Break
- Towns
- Highways
- Local Roads
- Wildfire Daily Fire Perimeter
- Uncontrolled Fire Edge
- Completed Line
- Access or Improved Road

## PHONE LIST - 34 Complex

Position	Name	Phone Number	Position	Name	Phone Number
<b>COMMAND</b>			<b>FINANACE</b>		
Incident Commander	Steve Parrish	850-524-1244	Time Unit Leader (t)	Sherise Foster	919-943-7843
Incident Commander	Danny Bryant	601-500-2505	Cost Unit Leader	Tom Steele	770-363-3583
Liaison Officer	Keith Lawrence	803-522-5264	Comp/Claims	Terri McDonald	352-454-5385
Public Information	Bonnie Strawser	252-216-8667	Comp/Claims (t)	Pamela Stamper	276-389-7477
Public Information	John Nichols	501-282-9634	Personel Time Recorder (t)	Gustavo Vallejo	423-284-1041
Public Information	Adam Solt	435-201-0856	<b>PLANNING</b>		
Public Information (t)	Donald Simon	910-975-1895	Chief	Dave Berens	601-319-6823
Safety Officer	Buddy Kelley	850-447-1344	Resource Unit Leader	Melonie Sellers	601-508-8997
Safety Officer	Mark Sullivan	205-531-7183	Resource Unit Leader	Carol O'Bryan	903-263-8704
Safety Officer	Larry Holsomback	706-280-4716	Situation Unit Leader (t)	EJ Bunzendahl	859-559-2397
Safety Officer	Randy Miller	571-232-7922	Fire Behavior Analyst	Jamie Atkins	706-955-5986
<b>OPERATIONS</b>			IMET	David Shallenberger	606-481-9238
Planning Ops	Ron Bertsch	706-515-5625	GISS	Chris Evans	928-273-4203
Planning Ops (t)	Shawn Nagle	662-231-4024	GISS	Christian Vose	828-342-0512
Field Ops	Jeff Schardt	706-280-5498	GISS (t)	Joseph Harsh	662-803-1973
Field Ops (t)	Dan Martin	540-266-2042	GISS (t)	JT Allen	405-593-6226
Night Operations	Bryan Elam	580-216-9137	Demob	Henry Hickerson	540-798-2218
Division A	Sean Gast	209-770-6265	Check In	Angela Marcano	706-474-4026
Division A (t)	Joe Pearlman	209-272-2132	Check In (t)	Jocelyn Howell	214-934-0138
Division D	Greg Salansky	865-414-6461	Training Specialist	Diane Bolt	828-553-8870
Division D (t)	Jared Nobles	352-317-6297	Compter Tech	John Edwards	850-261-9127
Division G	Matt Johnson	870-415-0185	Compter Tech	Nikita Carty	305-878-9907
Division J	Tom Crews	252-216-6361	<b>LOGISTICS</b>		
Structure Protection Group	Randy Jones	352-267-7700	Chief	Susan Cornett	903-930-5321
Structure Protection Group (t)	Jason Klawinsky	936-520-8827	Chief (t)	Cameron Crisp	304-642-2035
Initial Attack Group	Heath Thomas	501-208-7077	Deputy	Duane Cihlar	218-370-1662
Initial Attack Group (t)	Mike Brod	706-212-8012	Supply Unit	Ron Zabka	603-630-4916
Night Shift DIVS	Jerry Anderson	940-210-7769	Supply Unit (t)	John Dunlap	580-216-1882
Night Shift DIVS (t)	Dennis Gaston	804-840-5493	Facilities Unit	Gene-Paul Matson	434-665-0444
<b>AIR OPERATIONS</b>			Ground Support Unit Leader	Todd Waller	501-337-6308
Air Operation Branch Director	Bruce Wicks	530-906-2224	Ground Support Unit Leader (t)	Kevin Wagner	479-243-6564
Air Support Group Supervisor	Pete Kubiak	404-661-4819	Ordering Manager	Nina Donley	205-243-8816
Air Tatical Group Supervisor	Tony Defalco	702-592-9215	Ordering Manager	Durinda Hulett	309-338-1667
Air Tatical Group Supervisor	Pete Koerber	530-277-9261	Receiving & Distribution	Chris Combs	727-992-0046
Helibase Manager	John Bragg	423-483-2798	Communications	Terry Brinson	386-868-7649
<b>FINANACE</b>			Medical Unit Leader	Jeffery Cummings	317-730-6653
Chief	Wanda Kelley	423-584-1472	Security Manager	Tom Neal	618-201-2111
Chief (t)	Jennifer Cross	423-715-9025			
Time Unit Leader	Jean Frick	828-361-5361			





## Medical Incident Report- "9 Line"

**FOR ALL MEDICAL EMERGENCIES: IDENTIFY ON SCENE INCIDENT COMMANDER BY NAME AND POSITION AND ANNOUNCE "MEDICAL EMERGENCY" TO INITIATE RESPONSE FROM IMT COMMUNICATIONS/DISPATCH.**

Use items one through nine to communicate situation to communications/dispatch.

**1. CONTACT COMMUNICATIONS/DISPATCH**

*Ex: "Communications, Div. Alpha. Stand-by for Priority Medical Incident Report." (If life threatening request designated frequency be cleared for emergency traffic.)*

**2. INCIDENT STATUS: Provide incident summary and command structure.**

Nature of Injury/Illness		<i>Describe the injury (Ex: Broken leg with bleeding)</i>
Incident Name		<i>Geographic Name + "Medical" (Ex: Trout Meadow Medical)</i>
Incident Commander		<i>Name of IC</i>
Patient Care		<i>Name of Care Provider (Ex: EMT Smith)</i>

**3. INITIAL PATIENT ASSESSMENT: Complete this section for each patient. This is only a brief, initial assessment. Provide additional patient info after completing this 9 Line Report.**

Number of Patients:	Male / Female	Age:	Weight:
Conscious? <input type="checkbox"/> YES <input type="checkbox"/> NO = MEDEVAC!			
Breathing? <input type="checkbox"/> YES <input type="checkbox"/> NO = MEDEVAC!			
Mechanism of Injury: <i>What caused the injury?</i>			
Lat/Long (Datum WGS84)			

**4. SEVERITY OF EMERGENCY, TRANSPORT PRIORITY**

SEVERITY	TRANSPORT PRIORITY
<input type="checkbox"/> URGENT-RED Life threatening injury or illness. <i>Ex: Unconscious, difficulty breathing, bleeding severely, 2° – 3° burns more than 4 palm sizes, heat stroke, disoriented.</i>	Ambulance or MEDEVAC helicopter. Evacuation need is IMMEDIATE.
<input type="checkbox"/> PRIORITY-YELLOW Serious Injury or illness. <i>Ex: Significant trauma, not able to walk, 2° – 3° burns not more than 1-2 palm sizes.</i>	Ambulance or consider air transport if at remote location. Evacuation may be DELAYED.
<input type="checkbox"/> ROUTINE-GREEN Not a life threatening injury or illness. <i>Ex: Sprains, strains, minor heat-related illness.</i>	Non-Emergency. Evacuation considered Routine of Convenience.

**5. TRANSPORT PLAN:**

Air Transport: (Agency Aircraft Preferred)

<input type="checkbox"/> Helispot	<input type="checkbox"/> Short-haul/Hoist	<input type="checkbox"/> Life Flight	<input type="checkbox"/> Other
Ground Transport:			
<input type="checkbox"/> Self-Extract	<input type="checkbox"/> Carry-Out	<input type="checkbox"/> Ambulance	<input type="checkbox"/> Other

**6. ADDITIONAL RESOURCE/EQUIPMENT NEEDS:**

<input type="checkbox"/> Paramedic/EMT(s)	<input type="checkbox"/> Crew(s)	<input type="checkbox"/> SKED/Backboard/C-Collar
<input type="checkbox"/> Burn Sheet(s)	<input type="checkbox"/> Oxygen	<input type="checkbox"/> Trauma Bag
<input type="checkbox"/> Medication(s)	<input type="checkbox"/> IV/Fluid(s)	<input type="checkbox"/> Cardiac Monitor/AED
<input type="checkbox"/> Other (i.e. splints, rope rescue, wheeled litter)		

**7. COMMUNICATIONS:**

Function	Channel Name/Number	Receive (Rx)	Tone/NAC *	Transmit (Tx)	Tone/NAC *
A - G	34 Complex Fire	169.200		169.200	
COMMAND	MESA	170.45		168.1	
AIR-TO-GRND	VTAC 12	154.4525	156.7	154.4525	For Aircraft without A-G

\*(NAC for digital radio system)

**8. EVACUATION LOCATION:**

Lat/Long (Datum WGS84) <i>EX: N 40 42.45' x W 123 03.24'</i>	
Patient's ETA to Evacuation Location:	
Helispot/Extraction Size and Hazards:	

**9. CONTINGENCY:**

<b>Considerations:</b> <i>If primary options fail, what actions can be implemented in conjunction with primary evacuation method? Be thinking ahead...</i>	<b>REMEMBER:</b> <b>Confirm ETA's of resources ordered Act according to your level of training Be Alert. Keep Calm. Think Clearly. Act Decisively.</b>
------------------------------------------------------------------------------------------------------------------------------------------------------------	----------------------------------------------------------------------------------------------------------------------------------------------------------------