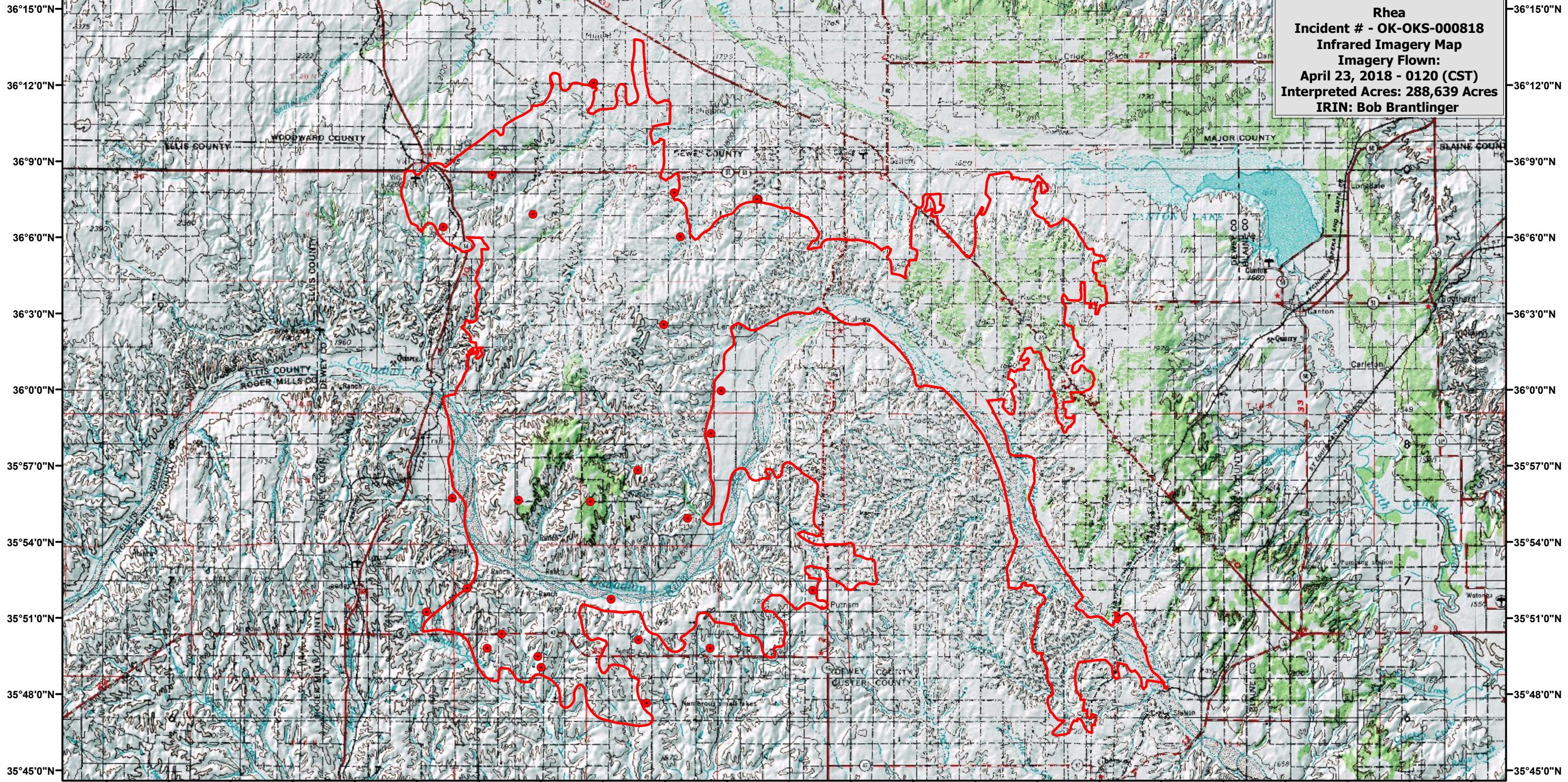





99°33'0"W 99°30'0"W 99°27'0"W 99°24'0"W 99°21'0"W 99°18'0"W 99°15'0"W 99°12'0"W 99°9'0"W 99°6'0"W 99°3'0"W 99°0'0"W 98°57'0"W 98°54'0"W 98°51'0"W 98°48'0"W 98°45'0"W 98°42'0"W 98°39'0"W 98°36'0"W 98°33'0"W 98°30'0"W 98°27'0"W



Rhea
Incident # - OK-OKS-000818
Infrared Imagery Map
Imagery Flown:
April 23, 2018 - 0120 (CST)
Interpreted Acres: 288,639 Acres
IRIN: Bob Brantlinger

Legend

-  Incident Perimeter
-  Isolated Heat Source
-  IR Cloud Cover

