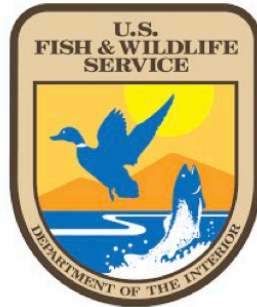


Rush Fire

OK-WMR-002793
PR SA4U (1522) [P]

INCIDENT ACTION PLAN



Friday 11/1/2024
Day Shift 0700 - 1900

Incident Resources: Check-in/ Map Download



Check In



Map Download

Rush Fire Information

Hours: 8 am-8 pm Phone: 580-257-7839

Email: 2024.Rush@firenet.gov

InciWeb: <https://inciweb.wildfire.gov/incident-information/okwmr-rush-fire>

Facebook: <https://www.facebook.com/@WichitaMountainsWildlifeRefuge/>

INCIDENT OBJECTIVES	1. Incident Name	2. Date Prepared	3. Time Prepared
	Rush Fire	10/31/24	1700

4. Operational Period

DAY SHIFT: Friday, November 1, 2024 - 0700-1900

Intent, Objectives

Operational Period Command Emphasis

Stop, Think, Discuss then Act, and ensure LCES is in place prior to engaging the fire or Initial Response fire.

The Rush Fire will receive a strategic, risk-based response, commensurate with the threats and opportunities, and uses the full spectrum of management actions, that consider fire and fuel conditions, weather, values at risk, and resources available.

Operational Objectives

Implementation of the following operational objectives is to be applied and accomplished only through managing risk to best assure firefighter safety.

1. Execute a confinement and point protection strategy utilizing direct and indirect tactics to minimize impacts to values at risk and firefighter exposure.
2. Prevent or minimize fire impacts to these prioritized values at risk: Wichita Mountains National Wildlife Refuge and adjacent lands.
3. Provide Initial Attack within Planning Area.

Management Objectives

1. Provide timely and accurate dissemination of information to residents of Comanche County, fire-adjacent residences and the jurisdictional agencies. Keep these entities informed of management goals, objectives, successes and challenges on the incident.
2. Protect and/or mitigate impacts to the identified values at risk as prioritized by the jurisdictional agencies. Implement an aggressive suppression strategy utilizing direct attack in situations where risks to structures exist. On the Refuge, the impact of fire suppression activities is a greater concern to natural resources than the fire itself; take advantage of breaks in fuels, topographic features, or changes in weather in your suppression efforts.

General Situation Awareness

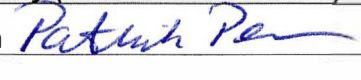
Unauthorized access by members of the public should be immediately reported to Law Enforcement.

Known safety hazards within the proximity of the fire area include the presence of wild bison and longhorn, venomous snakes, rugged granite terrain, elevated risk of heat related illness, and standing snag patches from previous fires.

8. ATTACHMENTS (X IF ATTACHED)

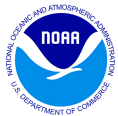
- | | |
|---|---|
| <input checked="" type="checkbox"/> ICS203 | <input checked="" type="checkbox"/> Weather Forecast/Fire Behavior Analysis |
| <input checked="" type="checkbox"/> ICS204 | <input checked="" type="checkbox"/> Safety Message |
| <input checked="" type="checkbox"/> ICS205 | <input checked="" type="checkbox"/> Weather Forecast/Fire Behavior Analysis |
| <input checked="" type="checkbox"/> ICS206 | <input checked="" type="checkbox"/> 8 Line – Medical Incident Report |
| <input checked="" type="checkbox"/> ICS 220 | |

9. Prepared By (Planning Section Chief) **10. Approved By (Incident Commander)**

Rob Gump ICS 202		Pat Pearson	
---------------------	---	-------------	---

ORGANIZATION ASSIGNMENT LIST (ICS 203)

1. Incident Name:		2. Operational Period:	
RUSH		Date/Time From: 11/01/2024 0700 FRI	Date/Time To: 11/01/2024 1900 FRI
3. Incident Commander(s) and Command Staff:		DIVISION/GROUP	ALPHA JOHN FRY
IC/UC	PAT PEARSON	DIVISION/GROUP	CONTINGENCY MATT CLEMINS
DEPUTY	MARK MORALES	DIVISION/GROUP	KILO JASON FRENCH
SAFETY OFFICER	MICHAEL COOK, RICHARD LIDELL	DIVISION/GROUP	QUEBEC DON DEVRIENDT
INFORMATION OFFICER	SUSAN HEISEY, BONNIE STRAWSER, JOHN NICHOLS	7b. Air Operations Branch:	
LIAISON OFFICER	ROXANNA HINZMAN BRYAN SWANSON	AIR OPS BRANCH DIRECTOR	JAEL CONSTANTINO
		HELIBASE MANAGER	RYAN CARVER SETH LOUTZENHISER (T)
4. Agency/Organization Representative(s):		8. Finance/Administration Section:	
Agency/Organization	Name	CHIEF	JOHN WARNER
USFWS - WMWR	AMBER ZIMMERMAN TJ LOWDER	TIME UNIT	KIMBERLEY WINKLER
5. Planning Section:		PROCUREMENT UNIT	SEAN EUGENE ONEAL
CHIEF	ROBERT GUMP LIZ STRUHAR (T)	COMPENSATION UNIT	ALICE F BARNETTE
RESOURCES UNIT	JORDAN RICE	COST UNIT	LYNDA DIANE LOWDER
SITUATION UNIT	JAMES ALLEN		
DEMOBILIZATION UNIT	DONNA THOMAS JESSICA VALDEZ (T)		
TRAINING SPECIALIST	ALTON HOKE		
GIS SPECIALIST	TOMMY BARNES		
TECHNOLOGY SUPPORT SPECIALIST	JOSEPH MARK ASHBY		
INCIDENT METEOROLOGIST	RICK MATTHEW HLUCHAN		
6. Logistics Section:			
CHIEF	CHRISTOPHER REVELS		
DEPUTY	STEVE WEHERLEY JOHNNY SMITH		
SUPPLY UNIT	RYAN MORRIS		
FACILITIES UNIT	SUSANNE ADAMS		
GROUND SUPPORT UNIT	ANDY JOHNSON		
COMMUNICATIONS UNIT	BARRY STEARNS JERRY PATRICK		
MEDICAL UNIT	FREDERICK R ADLER NICHOLAS D ARNETT		
FOOD UNIT	THOMAS BOYD		
7. Operations Section:			
OPS SECTION CHIEF	PETER MYERS		
PLANNING OPS	BRIAN ELAM		
FIELD OPS	DAVID WALKER, ROBERT THORP CLIFTON WILLIS (T)		
STRUCTURE PROTECTION SPECIALIST	MARK ABRAHAMSON		
9. Prepared By:	Name: JORDAN RICE	Position/Title: RESL	Signature:
ICS 203	IAP Page	Date/Time: 10/31/2024 1542	Jordan Rice



INCIDENT Weather Forecast



Forecast No: 3
Prediction For: Friday
Shift Date: November 01, 2024
Forecast Issued: October 31, 2024 at 1509

Name of Incident: Rush Fire
Unit: Wichita Mountains NWR
Incident Meteorologist: Rick Hluchan
 (979) 877-5897

Discussion: This morning starts off chilly with lows in the 40s under clear skies with light winds. We transition back to south winds by afternoon with increasing clouds and temperatures warming into the 70s. By Saturday morning, showers and thunderstorms will increase in coverage across the area. Heavy rainfall will be possible with 1-2 inches likely by Saturday night. Flash flooding will be possible, especially around the burn scar where soils can't absorb the rain quickly.

Forecast for Today:

...Warmer and Dry...

Sky/Weather:

Increasing Clouds

	<u>Lawton 1,200'</u>	<u>Visitors Center 1,800'</u>	<u>Mt Lauramac 2,400'</u>	
Max Temperature:	78	76	74	°F
Min RH:	38	39	40	%
Wind (20 FT): Light winds becoming south by afternoon				
... SE	7	SE 8	SE 9	mph
... Gusts:	15	Gusts: 15	Gusts: 15	mph
Mixing Height:	3,500	3,000	2,500	ft AGL
Chance of Precipitation:	0	0	0	%
Tonight's Min Temperature:	56	57	59	°F
Tonight's Max RH:	100	100	100	%
Tonight's Wind (20 FT): Light southeast winds				
... SE	11	SE 4	SE 5	mph
... Gusts:	20	Gusts: 13	Gusts: 13	mph
Tonight's Mixing Height:	1,500	1,000	500	ft AGL
Tonight's Chnc of Precip:	80	80	80	%

Forecast for Saturday:

...Heavy Rainfall Likely...

Sky/Weather:

Showers and Thunderstorms

	<u>Lawton 1,200'</u>	<u>Visitors Center 1,800'</u>	<u>Mt Lauramac 2,400'</u>	
Max / Min Temperature:	75 59	73 60	71 62	°F
Min / Max RH:	86 100	88 100	90 100	%
Wind (20 FT): South winds...gusty in and near thunderstorms				
... SE	11	SSE 12	SSE 13	mph
... Gusts:	20	Gusts: 20	Gusts: 20	mph
Mixing Height:	2,000	1,500	1,500	ft AGL
		LAL:	Precip Chance:	100

Extended

Heavy rainfall and flooding will continue into Sunday. Some of the storms could be severe and produce

Outlook:

large hail and damaging winds. Precipitation will taper off Monday with dry conditions returning midweek.

		<u>Max T</u>	<u>Min T</u>	<u>Min RH</u>	<u>Max RH</u>	<u>Ridge Winds @ 1500</u>	<u>Weather</u>
Visitors Center 1,800'	Sun:	75	58	85	100	S @ 15 G25	Showers/Storms
	Mon:	76	42	52	85	SW @ 15 G25	Showers Ending
	Tue:	65	37	47	95	SW @ 9 G15	Cool and Dry



Spot forecasts for specific divisions/branches can be provided by the IMET. The IMET can be reached with observations and spot requests at the ICP, at rick.hluchan@noaa.gov, or at (979) 877-5897.

<-- Email the IMET with your observations!

View observations across the fire area -->



FIRE BEHAVIOR FORECAST

FORECAST NUMBER: #1	TYPE OF FIRE: Wildland
FIRE NAME: Rush	OPERATIONAL PERIOD: 10/31 thru 11/1/2024 Thursday and Friday
DATE ISSUED: 10/30/2024	TIME ISSUED: 2000
UNIT: Oklahoma Forestry and Wichita Mountains Wildlife Refuge	WRITTEN: <i>David Quisenberry</i> - FBAN

FUEL ASSUMPTIONS: The fuels in the Rush fire area have been exposed to prolonged dry conditions, resulting in above average fire danger. While recent moderating conditions may have decreased the potential for active fire, the impacts could vary widely across the landscape. It's essential to assess and monitor conditions in your work area. Grass is the main carrier of fire and responds rapidly to changes in the fire environment. The mixed grass prairies have above average fuel loading due to spring rains. Patches of shrubland and wooded areas occur intermittently across the landscape. Consider all fuels available to contribute to fire spread when exposed to short drying periods. Grass fuels are cured, and live fuel moistures in shrubs are at levels that will easily carry fire. 1000-hour fuel moistures on the refuge are 15%.

WEATHER SUMMARY: Reference fire weather forecast for specifics.

GENERAL FIRE BEHAVIOR FORECAST:

On Thursday, decreased wind speeds and increased humidity are expected to significantly reduce the potential for large fire growth compared to recent days. This trend is anticipated to continue into Friday, with fire activity primarily limited to smoldering heavy fuels and isolated pockets of green fuel in the interior. Any fire activity near containment lines poses a risk of spotting into receptive fuels, particularly where green pockets align with winds. Previous escapes have occurred when seemingly inactive riparian fuels were ignited by undetected smoldering heavy fuels. Visible smoke is likely across the fire area, primarily from jackpot fuels, heavy fuels, or dozer berms. Although Energy Release Component (ERC) values have decreased, they remain above the 90th percentile, and fuel moisture levels are low *Fine dead fuel moistures from 8 to 10%. Spotting distances of 1/4 mile. PIG: 55%*

Fuels	Rates of Spread	Flame Length
Grass rangeland	100 to 155 feet/ minute	8 to 10 feet
Mixed grass/ brush	30 to 55 feet/ minute	7 to 9 feet

By Saturday, rainfall is expected to significantly decrease fire activity, likely limiting fire growth potential into early next week. Light fuels are likely to respond favorably to the precipitation and increased humidity. However, heavier fuels may continue to smolder following the rain events. Additionally, light fuels that are sheltered by shrub cover may retain residual heat, allowing them to become active again during subsequent dry periods. This could potentially lead to the fire becoming active again, necessitating ongoing monitoring and patrol.

AIR OPERATIONS: Good visibility. The weather shouldn't limit aviation operations.

FIRE BEHAVIOR SAFETY: Remember, LCES always even when the fire does not appear to pose any threat to your safety.



HEALTH AND SAFETY MESSAGE

“We don’t plan on luck to be safe, we plan on sound risk management and good decisions.....the Red Team

Day and Night Shift

INCIDENT: Rush Fire		DATE: Friday November 1, 2024	
Major Hazards & Risks: Driving, Wildlife, Medical Emergency Response, Footing			
<p>Driving: The weekend begins today, bringing tourists, high school football crowds and others into our area. Rain arrived and will continue over the next few days. Road conditions may be softer or slicker. <i>Anticipate some distracted or drunk drivers.</i></p> <p>Wildlife: Cooler temperatures and shorter days trigger changes in some wildlife so expect more road encounters. <i>Think about the impact of hitting a bison (2200 lbs.), an elk (700-1100 lbs.) or a longhorn (900-1200 lbs.).</i></p> <p>Medical Emergency: Personnel are being moved and released, so medical response could be different than yesterday. Plan ahead and practice a scenario for a medical emergency, including your division or section medical resources. <i>Call Rush Communications on command frequencies for a medical emergency.</i></p> <p>Footing: Wet rocks, roots and metal can cause falls. Some result in broken bones, surgeries and long-term disabilities. <i>Slow down, step over and hold on.</i></p>			
PERSONAL SECURITY		POWER LINE SAFETY	
<p>Active Shooter – RUN, HIDE, FIGHT. Use any exit, account for all, keep hands open and high if law enforcement is present</p> <p>Tornado Warning – go to Bison Room at ICP. If at night, check with your motel or go to lowest stairwell.</p> <p>Around town be alert for criminal activity, travel with company, use buddy system.</p>		<p>Power lines are common in DIVA and in the adjacent private lands. Identify lines during initial attack. High winds and heavy smoke may impact lines. Avoid parking or staging under lines. Burned poles may be compromised.</p> <p>Review IRPG Power Line safety on pages 22-23.</p>	

Division/Group Assignment List (ICS 204 WF)

Controlled Unclassified Information//Basic

1. Incident Name:			3.			
RUSH			Branch:		Division/Group: ALPHA	
2. Operational Period:						
Date/Time From: 11/01/2024 0700 FRI		Date/Time To: 11/01/2024 1900 FRI				
4. Operations Personnel						
OPERATIONS CHIEF		PETE MYERS		FIELD OPS		
				DAVID WALKER, ROBERT THORP CLIFTON WILLIS (T)		
PLANNING OPS		BRIAN ELAM		DIVISION/GROUP SUPERVISOR		
				JOHN FRY		
5. Resources Assigned this Period						
Strike Team / Task Force / Resource Designator		LWD	Leader	Number Persons	Drop Off PT./Time	Pick Up PT./Time
E-27 ENG6 BIRD DOG		11/11	MATTHEW WIMER	3	LAWTON ICP/0700	LAWTON ICP/1900
E-30 ENG6 CRANE		11/10	THOMAS MARTIN	3	LAWTON ICP/0700	LAWTON ICP/1900
O-19 TFLD		11/10	TODD AYRES	1	LAWTON ICP/0700	LAWTON ICP/1900
O-44 EMPF		11/11	ROBERT BURNS	1	LAWTON ICP/0700	LAWTON ICP/1900
E-48 AMB2 HEARTLAND AMBULANCE AMBO3		11/11	ERICA JACKSON	2	LAWTON ICP/0700	LAWTON ICP/1900
O-14.9 SOFC		11/10	JACOB BROLLIER	1	LAWTON ICP/0700	LAWTON ICP/1900
6. Control Operations/Work Assignments:						
Mop up 100'. Limit any fire growth out of the unit to prevent further damage to private property and protect values at risk.						
7. Special Instructions:						
Indicates IA resources						
If IWI occurs the closest resource with the highest qualification will take command.						
8. Division/Group Communication Summary						
Function	Channel	RX Frequency N/W	RX Tone/NAC	TX Frequency N/W	TX Tone/NAC	Mode
COMMAND	1	169.825	103.5	166.350	103.5	
TACTICAL	5	164.425		164.425		
AIR TO GROUND	14	167.225		167.225		
9. Prepared By (Resource Unit Leader)			Approved By (Planning Section Chief)		Date	Time
JORDAN RICE			ROB GUMP		10/31/2024	2200

Division/Group Assignment List (ICS 204 WF)
Controlled Unclassified Information//Basic

1. Incident Name:				3.		
RUSH				Branch:	Division/Group:	
2. Operational Period:						
Date/Time From: 11/01/2024 0700 FRI		Date/Time To: 11/01/2024 1900 FRI		CONTINGENCY		
4. Operations Personnel						
OPERATIONS CHIEF		PETE MYERS		FIELD OPS		DAVID WALKER, ROBERT THORP CLIFTON WILLIS (T)
PLANNING OPS		BRIAN ELAM		DIVISION/GROUP SUPERVISOR		MATT CLEMINS
5. Resources Assigned this Period						
Strike Team / Task Force / Resource Designator		LWD	Leader	Number Persons	Drop Off PT./Time	Pick Up PT./Time
E-34 ENG6 WILDLANDS SERVICE		11/12	ADAM WRIGHT	3	LAWTON ICP/0700	LAWTON ICP/1900
E-38 ENG6 GAS		11/13	BRIAN ROBERSTON	3	LAWTON ICP/0700	LAWTON ICP/1900
E-59 DZR2 ROCKY MOUNTAIN FIRE		11/10	BRIAN KOCH	2	LAWTON ICP/0700	LAWTON ICP/1900
E-60 DZR2 CLICK'S WILDLAND FIRE MANAGEMENT		11/11	SCOTT CLICK	2	LAWTON ICP/0700	LAWTON ICP/1900
6. Control Operations/Work Assignments:						
Conduct structure triage, identify contingency lines, and build secondary lines as directed by county personnel.						
7. Special Instructions:						
Any heavy equipment used on private lands must be washed before loading and transport back to Wichita Mountains Wildlife Refuge.						
If IWI occurs the closest resource with the highest qualification will take command.						
8. Division/Group Communication Summary						
Function	Channel	RX Frequency N/W	RX Tone/NAC	TX Frequency N/W	TX Tone/NAC	Mode
COMMAND	1	169.825	103.5	166.350	103.5	
TACTICAL	5	168.5625		168.5625		
AIR TO GROUND	14	167.225		167.225		
9. Prepared By (Resource Unit Leader)			Approved By (Planning Section Chief)		Date	Time
JORDAN RICE			ROB GUMP		10/31/2024	2200

Division/Group Assignment List (ICS 204 WF)

Controlled Unclassified Information//Basic

1. Incident Name:			3.			
RUSH			Branch:		Division/Group:	
2. Operational Period:						
Date/Time From: 11/01/2024 0700 FRI		Date/Time To: 11/01/2024 1900 FRI		KILO		
4. Operations Personnel						
OPERATIONS CHIEF		PETE MYERS		FIELD OPS		DAVID WALKER, ROBERT THORP CLIFTON WILLIS (T)
PLANNING OPS		BRIAN ELAM		DIVISION/GROUP SUPERVISOR		JASON FRENCH JASON JOHNSON (T)
5. Resources Assigned this Period						
Strike Team / Task Force / Resource Designator		LWD	Leader	Number Persons	Drop Off PT./Time	Pick Up PT./Time
E-16 ENG6 NE-RBR 6102		11/08	JOHN GRAHAM	2	LAWTON ICP/0700	LAWTON ICP/1900
E-29 ENG6 WILDLANDS SERVICE		11/12	BRIAN TERRY	3	LAWTON ICP/0700	LAWTON ICP/1900
E-68 AMB1 COMANCHE COUNTY AMBO1		11/06	MATTHEW REAGAN	2	LAWTON ICP/0700	LAWTON ICP/1900
O-14.9 SOFC		11/10	JACOB BROLLIER	1	LAWTON ICP/0700	LAWTON ICP/1900
6. Control Operations/Work Assignments:						
<p>Task - Keep the fire north of Hwy 49/115. Patrol and mop up 100' off the line. Protect the structures/values at risk. Purpose - To secure the values at risk within the division. Prevent fire spread outside the refuge. End State - Fire does not increase its current footprint and affect the lands outside the refuge.</p>						
7. Special Instructions:						
<p>*Indicates IA Resources*</p> <p>If IWI occurs the closest resource with the highest qualification will take command.</p>						
8. Division/Group Communication Summary						
Function	Channel	RX Frequency N/W	RX Tone/NAC	TX Frequency N/W	TX Tone/NAC	Mode
COMMAND	1	169.825	103.5	166.350	103.5	
TACTICAL	10	164.750		164.750		
AIR TO GROUND	14	167.225		167.225		
9. Prepared By (Resource Unit Leader)			Approved By (Planning Section Chief)		Date	Time
JORDAN RICE			ROB GUMP		10/31/2024	2200

Division/Group Assignment List (ICS 204 WF)

Controlled Unclassified Information//Basic

1. Incident Name:				3.			
RUSH				Branch:		Division/Group:	
2. Operational Period:							
Date/Time From: 11/01/2024 0700 FRI		Date/Time To: 11/01/2024 1900 FRI		QUEBEC			
4. Operations Personnel							
OPERATIONS CHIEF		PETE MYERS		FIELD OPS		DAVID WALKER, ROBERT THORP CLIFTON WILLIS (T)	
PLANNING OPS		BRIAN ELAM		DIVISION/GROUP SUPERVISOR		DON DEVRIENDT	
5. Resources Assigned this Period							
Strike Team / Task Force / Resource Designator		LWD	Leader	Number Persons	Drop Off PT./Time	Pick Up PT./Time	
E-20 ENG4 TX-SRR - 2441		11/02	ISMAEL LERMA	2	LAWTON ICP/0700	LAWTON ICP/1900	
E-76 ENG4 OKWMR E2841		11/06	DARREN K PROCTOR	2	LAWTON ICP/0700	LAWTON ICP/1900	
E-26 ENG6 LOOMIS FIRE		11/10	DAVID MELENDEZ	3	LAWTON ICP/0700	LAWTON ICP/1900	
E-36 ENG6 ALL TERRAIN		11/12	HEATHER HERDT	3	LAWTON ICP/0700	LAWTON ICP/1900	
O-20 TFLD		11/01	EDWARD HARDESTY	1	LAWTON ICP/0700	LAWTON ICP/1900	
O-43 EMPF		11/11	RYAN JONES	1	LAWTON ICP/0700	LAWTON ICP/1900	
O-14.9 SOFC		11/10	JAKE BROLLIER	1	LAWTON ICP/0700	LAWTON ICP/1900	
E-42 MESU BLACK FLAG MED MOD 1		11/13	DAVID YOUNG	2	LAWTON ICP/0700	LAWTON ICP/1900	
6. Control Operations/Work Assignments:							
Mop up 100'. Limit any fire growth out of the unit to prevent further damage to private property and protect values at risk.							
7. Special Instructions:							
If IWI occurs the closest resource with the highest qualification will take command.							
8. Division/Group Communication Summary							
Function	Channel	RX Frequency N/W	RX Tone/NAC	TX Frequency N/W	TX Tone/NAC	Mode	
COMMAND	1	169.825	103.5	166.350	103.5		
TACTICAL	5	168.5625		168.5625			
AIR TO GROUND	14	167.225		167.225			
9. Prepared By (Resource Unit Leader)			Approved By (Planning Section Chief)			Date	Time
JORDAN RICE			ROB GUMP			10/31/2024	2200

Controlled Unclassified Information//Basic

**INCIDENT RADIO COMMUNICATIONS
PLAN I-205**

RUSH FIRE

10/31/2024

11/1/24 0700 - 11/2/24 0700

Communications Unit Phone:

Ch #	Channel Name	Assignment	RX Frequency	RX Tone / NAC	TX Frequency	TX Tone / NAC	Mode Digital (D) Analog (A) Mixed (M)	Remarks
1	Scot Repeater	COMMAND	169.8250	103.5	166.3500	105.5	A	East Side Repeater/ Incident Location Command Post Staging Area
2	Scott Simplex	Simplex	169.8250	103.5	169.8250	105.5	A	Incident Location Command Post Staging Area
3	Baker Repeater	Command	171.6750	127.3	165.4500	127.3	A	West Side Repeater/ Incident Location Command Post Staging Area
4	Baker Simplex	Simplex	171.6750	127.3	171.6750	127.3	A	Incident Location Command Post Staging Area
5	Fire	Div Q	168.5625	None	168.5625	None	A	OK/N. Texas Talkaround
6	County Direct	Simplex	153.7700	None	153.7700	100.0	A	Incident Location Command Post Staging Area
7	County Repeater	Repeater	153.7700	None	154.3550	100.0	A	Comanche County Repeater
8	State Fire	Simplex	154.1300	None	154.1300	None	A	Medical Air to Ground
9	Tac 1	Div A	164.4250	None	164.4250	None	A	
10	Tac 2	Div K	164.7500	None	164.7500	None	A	
11	R8 Fire		169.9000	None	169.9000	None	A	
12	Weather	Weather	162.5500	None	Receive Only	None	A	Local Weather
13	FWS-A	Simplex	164.6250	None	164.6250	None	A	
14	A/G 35	Air to Ground	167.2250	None	167.2250	None	A	
15	A/G 22	Air to Ground	168.4000	None	168.4000	None	A	
16	AIRGUARD	AIR EMERGENCY	168.6250	None	168.6250	110.9	A	EMERGENCY USE ONLY

5. I-205 Prepared By

Barry Stearns, COML

CLONE VERSION: WMR How
to check the clone version on your radio:
DPH'S - press and hold the # key
KNG/BKR - look at display or press zone key

**SCAN FOR RADIO HELP
AND TUTORIALS**



COMMUNICATIONS SAFETY MESSAGE: PLEASE POST LOOKOUTS TO RELAY MESSAGES IN AND OUT OF POOR COVERAGE AREAS.

AIR OPERATIONS SUMMARY 220		Prepared By: Jael Constantino	Prepared: 10/31/2024	Prepared Time: 1800
1. Rush Fire / OK-WMR-002793	2. OPERATIONAL PERIOD 11/01/2024	START TIME: 0800	END TIME: 1900	SUNRISE: 0754
				SUNSET: 1840

3. REMARKS (Safety Notes, Hazards, Air Operations Special Equipment, etc.).
 *** Due to Limited Comms with Dispatch, Local Flight Follow with Air Attack/Ground Personnel ***
 -TRACK ALL DIPSITE LOCATIONS / NUMBER OF DIPS / GALLONS TAKEN.
 -TRACK ALL DROP LOCATIONS / NUMBER OF DROPS / GALLONS DROPPED
 -ALL GPS DATA TO BE COLLECTED IN DEGREES, MINUTES, DECIMAL MINUTES FORMAT.
 >Generally, stop tactical aerial operations at sunset. Use the last ½ hr. for ferry back to base.<

4. MEDICAL AIRCRAFT:
 N911FS
 Type III with Litter Capabilities

5. TFR:
 NOTAM# 4/6439 (A-53)
 Alt. 7,000 MSL
 Frequency: 119,0500
 0700 – 1900 (12hr)
 Expires-1/14/24 @ 2300
<http://tfr.faa.gov/tfr2/list.html>

6. PERSONNEL	NAME	PHONE #	7. FREQUENCIES	AM	FM	8. FIXED-WING Avail/ Type/ Make-Model/ N#/ Base
AOBD	Jael Costantino	619-536-3480	A/A TFR	119.0500		AIRTANKERS, SEATS, AIR ATTACK-ORDER THRU AIR Ops.
ASGS			A/A Rotor	123.9750		LINE PERSONNEL - ORDER AIRCRAFT THRU DIVS.
HEBM	Ryan Carver	951-392-7708	A/G 35		167.225	*** Releasing N380PL and N911FS around Midshift ***
HEBM (I)	Seth Louzenthiser	951-282-0826	A/G 22		168.400	
			A/G Medical "State Fire"		154.130	
			Air Guard		168.6250 T110.9	
Dispatch	"Hot Springs Dispatch"	501-321-5232				

Cost Email: 2024.rush.finance@firenet.gov ;
 c/c-jael.constantino@usda.gov
 Include the word "cost" on your subject line

9. HELICOPTERS

FAA N#	TY	MAKE/ MODEL	BASE	START	AVAIL	REMARKS	FAA N#	TY	MAKE/ MODEL	BASE	START	AVAIL	REMARKS
N380PL	2	Bell 205 A1++	KLAW	0800	0900	A-33 Tank, Troop Shuttle, Cargo, Medical							
N911FS	3	Bell 407	KLAW	0800	0900	A-32 Bucket, Medical, Recon, Cargo, PSD							

Finance

Please e-mail all documents that pertain to your assignment to the Rush Fire inbox. Documents should be in a pdf format, no jpegs/pictures.

2024.rush.finance@firenet.gov

Finance cell: 610-368-5083

(Please, DO NOT text to this number, Only Call)

In the subject line, please use the keyword for your resource type:

- **Overhead/Non-contract Crews/Cooperators:** CTR, CH, RO
- **Contracted Equipment/Crews:** Shift Ticket, Manifest, Contract
- **Buying Team/Aircraft/Helibase Costs:** Aircraft, Helibase, Buying
- **Comp/Claims:** Comp, Injury, CA-1

Required Financial Documents:

Agency Overhead	Agency ADs / EFFs	VIPR Resources	Contract / Agency Crews	Cooperators
Resource Order Signed CTRs	Resource Order Casual Hire Form Signed CTRs	Resource Order VIPR Agreement Schedule of Items Inspections Signed STs	Resource Order Manifest Agreement / Contract Schedule of Items Inspections Signed CTRs	Resource Order Agreement Signed STs /CTRs

Documents needed by finance as of 10/31/2024 for remaining equipment resources:

E26 – ST 10/30-31
E28 – ST 10/30-31
E35 – NO ST
E36 – NO ST
E39 – Pre-Use, ST 10/29-31
E42 - Pre-Use Inspection, ST
E44 – Pre-Use, ST
E47 - Pre-Use
E52 – Pre-Use, ST 10/29-31
E53 – Pre-Use, ST 10/30-31
E54 – Pre-Use, ST
E56 – Pre-Use, ST 10/30-31
E57 – Pre-Use, ST 10/30-31
E59 – ST 10/30-31
E60 – Pre-Use, ST 10/30-31
E63 – Pre-Use
E65 – Pre-Use, NO ST
E68 – Pre-Use, Agreement

Please provide as soon as possible.

Email documents to 2024.Rush.finance@firenet.gov

Incident Trainee Check-In and
DEMOB Form RUSH - OK-WMR-
002793



Incident Trainees Register Now



To receive an Incident Training Packet, you must Check-In and DMOB with the Virtual Incident Training Specialist. Scan the QR Code, click or copy .

**VIRTUAL
TRAINING
SPECIALIST**

For more information contact Al Hoke, TNSP
678-232-7107 al_hoke@firenet.gov

**TENTATIVE RELEASE
RUSH OF-WMR-002793
11/1/2024**

EQUIPMENT

E-4	0800	(ENG6)	WILDLANDS SERVICE
E-5	0800	(ENG6)	PRO TEMPS
E-32	0800	(ENG6)	WILDLANDS SERVICE
E-33	0800	(ENG6)	WILDLANDS SERVICE
E-25	0900	(ENG6)	BALDWIN FORESTRY
E-31	0900	(ENG6)	RX FIRE EFFECTS
E-35	0900	(ENG6)	WILDLANDS SERVICE
E-37	0900	(ENG6)	NATIONAL FIRE
E-39	0900	(ENG6)	GREY WILDLAND
E-61	1000	(WTS1)	RITTBERGER TRUCKING LLC

OVERHEAD

O-97	0700	(INCM)	OLSEN, CAMERON DAVID
------	------	--------	----------------------

11/2/2024

EQUIPMENT

E-38	0700	(ENG6)	GRIFFITH WILLIAM JOSEPH
E-53	0730	(WTT2)	NATIONAL FIRE SUPPORT
E-59	0730	(DZR2)	ROCKY MOUNTAIN FIRE CONTROL LLC
E-6	0800	(ENG6)	RX FIRE EFFECTS
E-52	0800	(WTT2)	DYNAMITE WATER LLC
E-28	0830	(ENG6)	PATRICK ENVIRONMENTAL
E-34	0900	(ENG6)	WILDLANDS SERVICE

OVERHEAD

O-20	0600	(TFLD)	HARDESTY, EDWARD BRAD
------	------	--------	-----------------------



RUSH FIRE

OK-WMR-002793

DEMOBILIZATION CHECK-OUT PROCESS

The Rush Incident is using the following virtual checkout process for demobilization. Please do not leave the incident until the following steps have been completed!

1. 72 hours prior to demobilization date, please ensure that:
 - Your incident supervisor has submitted a [Demob Request](#) in coordination with the Demob unit.

If you need a flight arranged for you, please submit a [Flight Request](#).

2. On your demob date, please check out with the following units. Each unit will release you through an electronic process that is monitored, rather than a paper ICS-221.
 - Supply Unit – Return gear and supplies.
 - Ground Support – Return pool NERV rentals, receive inspections, etc.
 - Communications Unit – Return Radios and other communications equipment.
 - Time/Finance – Ensure that all CTRs and/or shift tickets have been submitted and you have received your final, signed OF-288 Time Report or OF-286 invoice.

Once you have completed the above steps, please fill out the [Demob Release Form](#)

3. **THIS IS THE LAST STEP OF THE DEMOB PROCESS. PLEASE DO NOT FILL THIS FORM OUT UNTIL ALL PRIOR STEPS ARE COMPLETE!**

Demob Unit Leader: (828) 528-7627, 2024.rush.demob@firenet.gov



Flight Request Form



Demob Release Form

Logistical Information

Rush Fire Ordering Information and Guidelines

Just a few things to consider when placing an order and to prevent ordering delays.

- All GMs should be sent to 2024.rush.ordering@firenet.gov
- Please do not mix functional ordering areas on the same general message. For example, please only include Overhead requests on the one general message and Equipment requests on a separate general message. This applies to supply and crew orders as well.
- Please include a POC, POC contact phone #, delivery/reporting location, date/time needed, item quantity, and any detailed special needs on the GM.
- For any orders that are not name requests, please place order at least 48 hours out. This applies to supplies, crews, equipment, and overhead.

Water, Gatorade, and Ice will be available at the Wichita Mountain National Wildlife Refuge Visitor Center.

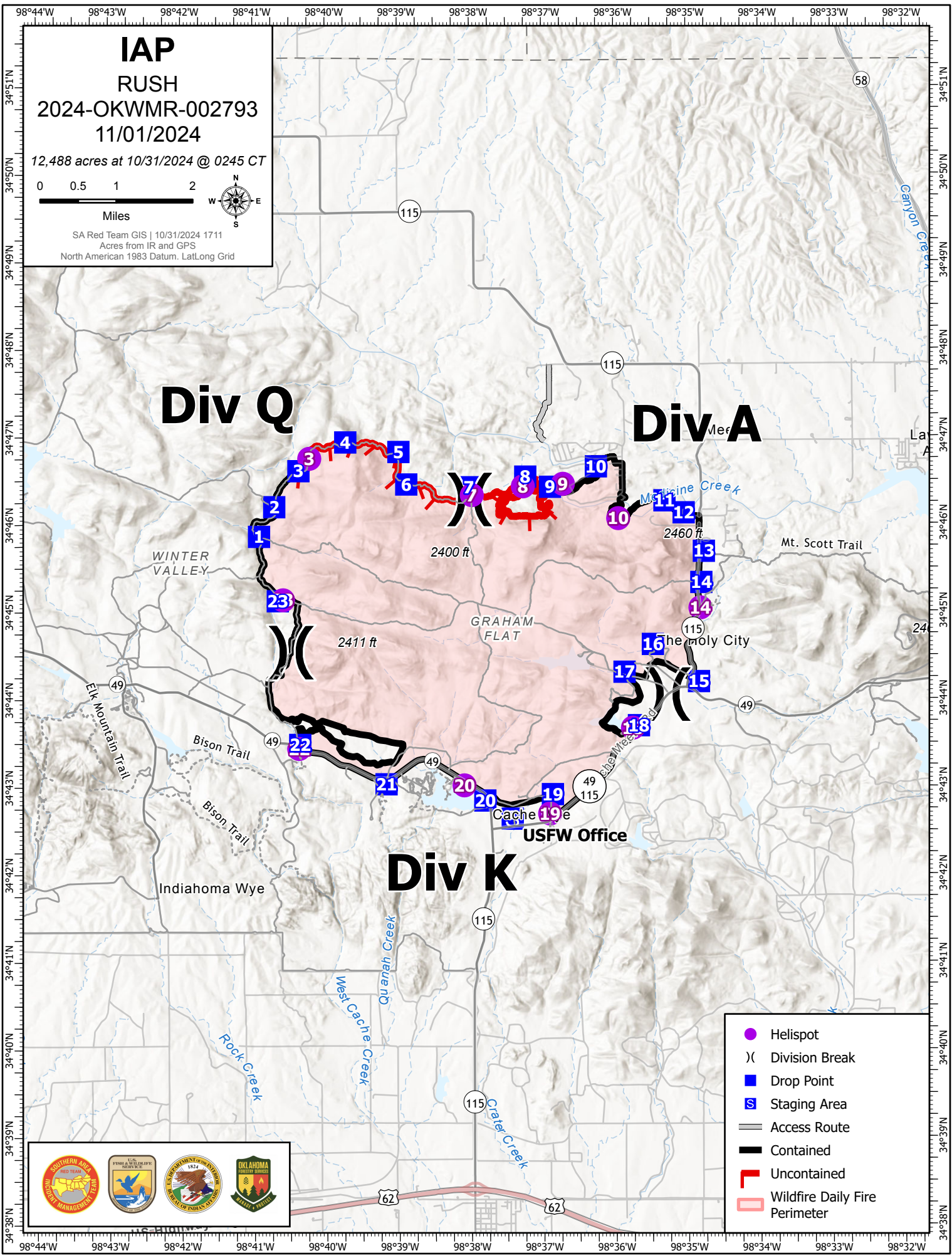
Supply and Ground Support are set up at the visitor center. Supply will be open from 0800 to 1000 hours.

A **fuel tender** is located at the @ Visitor Center Parking area:

Hours: 0700 – 1100 and 1200 – 1900

Mechanic Stationed at Visitor Center

Hours: 0700 - 1830



IAP
RUSH
2024-OKWMR-002793
11/01/2024

12,488 acres at 10/31/2024 @ 0245 CT

0 0.5 1 2 Miles

SA Red Team GIS | 10/31/2024 1711
 Acres from IR and GPS
 North American 1983 Datum, LatLong Grid

Div Q

Div A

Div K

- Helispot
-)(Division Break
- Drop Point
- S Staging Area
- Access Route
- Contained
- Uncontained
- Wildfire Daily Fire Perimeter



MEDICAL PLAN (ICS 206 WF)

Controlled Unclassified Information//Basic

1. Incident/Project Name				2. Operational Period							
Rush Fire				11/1/2024 Day Shift 0700-1900							
2. Medical Aid Stations											
3. Ambulance Services											
Name		Location		Phone		Advanced Life Support Yes No					
Comanche County Memorial EMS		Lawton, OK		Comanche County Dispatch 580-355-9303		X					
Kirk's Ambulance		1616 SW F Ave Lawton, OK 73501		580-355-6500		X					
4. Air Ambulance Services											
Name		Location, Capabilities				Advanced Life Support (ALS) Yes No					
Survival Flight 911 or 877-581-5558		Lawton, OK – NVG VHF - OKFIRE1 154.130 PL 156.7				X					
5. Hospitals											
Name/Address		GPS Datum – WGS 84 Coordinate Standard		Travel Time Air Gnd		Phone		Helipad Yes No		Level of Care	
OU Health University 700 NE 13 th , Lincoln Ave, OKC		Lat: 35° 28.909'		40 min	1.5 hrs	405-271-4700	X		L1 Trauma, STEMI, Stroke		
		Long: -97° 29.866'									
		VHF:									
Integrus Baptist Health 3300 NW Expressway OKC		Lat: 35° 31.860'		40 min	1.5 hrs	405-949-3011	X		L3 Trauma, STEMI, Stroke, Burn Center		
		Lon: -97° 34.681'									
		VHF:									
Comanche County Memorial 3401 W. Gore Blvd. Lawton, OK 73505		Lat: 34° 36.562'		15 min	30-45 min	580-585-5523	X		L3 Trauma, STEMI, Stroke		
		Long: -98° 26.131'									
		VHF:									
Southwestern Medical Center 5602 SW Lee Blvd. Lawton, OK 73505		Lat: 43° 29.4'		15 min	30-45 min	580-531-4786	X		L4 Trauma, Stroke		
		Long: -112° 1.8'									
		VHF:									
6. Clinics											
MedExpress Urgent Care, 3428 NW Cache Rd., Lawton, OK 73505. 304-225-3400. 8 am – 8 pm M-F.											

7. Division Branch Group			Area Location Capability					
Div A			EMS Responders & Capability:			Line Medic Robert Burns (ALS) 864-809-9543 Ambulance 3 Heartland (ALS) @ DP 7 Erica Jackson 662-588-2328		
Div Q			EMS Responders & Capability:			Line Medic Ryan Jones (ALS) 903-574-4557 Medic Team 1 (BLS) David Young 267-614-1246		
Div K			EMS Responders & Capability:			Ambulance 1 Comanche County (ALS) @ DP 22		
ICP			EMS Responders & Capability:			Fred Adler (BLS) 479-238-6064		

8. Prepared By (Medical Unit Leader)	9. Date/Time	10. Reviewed by (Safety Officer)	
Fred Adler, MEDL 479-238-6064 Nick Arnett, MEDL 408-888-1900 (remote)	10/31/2024 18:40	s/Mike Cook SOFC/	

Rush Communications Phone: 252-725-3545

IWI IC Responsibilities – Division Group Supervisor or Point of Contact

- Take charge of the scene – inform the Division Supervisor and Rush Communications that you are the IWI IC and establish communications (frequencies, channels, phone). Identify the emergency name – Division A medical, etc.
- Assign or begin patient assessment (Medical Incident Report - MIR) and first aid. Request additional medical resources on division/branch or across incident. Transmit MIR patient information to Communications.
- Determine patient transportation through consultation with line medical personnel and Medical Unit Leader. Consider transportation time, risk to personnel, destination facility and available operational resources. If air transport is chosen, implement the plan for alternative transportation in the event aircraft cannot complete the mission. Order transportation resources through Communications as early as possible.
- Notify Communications as resources arrive and any patient status changes. Names of injured or deceased individuals will not be transmitted on the radio.
- Initiate documentation for future investigation; if a line safety officer is available, assign them to lead documentation. Do not move deceased individuals, gear or personal effects except to accomplish rescue work or protect the safety of others. Obtain written documentation of witnesses. Unit Log, ICS 214, may be used for initial documentation, but a narrative will be required.
- As appropriate, conduct an After-Action Review to determine successes, areas to improve and lessons learned.

Medical Incident Report

FOR A **NON-EMERGENCY INCIDENT**: WORK THROUGH CHAIN OF COMMAND TO REPORT AND TRANSPORT INJURED PERSONNEL AS NECESSARY.

FOR A **MEDICAL EMERGENCY**: IDENTIFY ON SCENE INCIDENT COMMANDER BY NAME AND POSITION AND ANNOUNCE **"MEDICAL EMERGENCY"** TO INITIATE RESPONSE FROM COMMUNICATIONS

Use the following items to communicate situation to communications/dispatch.

1. CONTACT COMMUNICATIONS / DISPATCH (Verify correct frequency prior to starting report) **Phone: 252-725-3545**

Ex: "Rush Communications, Div. Alpha. Stand-by for Emergency Traffic."

2. INCIDENT STATUS: Provide incident summary (including number of patients) and command structure.

Ex: "Rush Communications, I have a Red priority patient, unconscious, struck by a falling tree.

Requesting air ambulance to Forest Road 1 at (Lat./Long.)

"This will be the Trout Meadow Medical Incident, IC is TFLD Jones. EMT Smith is providing medical care."

Severity of Emergency AND Transport Priority (priority 1, 2, 3)	<input type="checkbox"/> RED / PRIORITY 1 Life or limb threatening injury or illness. Evacuation need is IMMEDIATE <i>Ex: Unconscious, difficulty breathing, bleeding severely, 2° - 3° burns more than 4 palm sizes, heat stroke, disoriented.</i> <input type="checkbox"/> YELLOW / PRIORITY 2 Serious Injury or illness. Evacuation may be DELAYED if necessary. <i>Ex: Significant trauma, unable to walk, 2° - 3° burns not more than 1-3 palm sizes.</i> <input type="checkbox"/> GREEN / PRIORITY 3 Minor Injury or illness. Non-Emergency transport <i>Ex: Sprains, strains, minor heat-related illness.</i>
Nature of Injury or Illness & Mechanism of Injury	Brief Summary of Injury or Illness (<i>Ex: Unconscious, Struck by Falling Tree</i>)
Transport Request	Air Ambulance / Short Haul/Hoist Ground Ambulance / Other
Patient Location	Descriptive Location & Lat. / Long. (WGS84)
Incident Name	Geographic Name + "Medical" (<i>Ex: Trout Meadow Medical</i>)
On-Scene Incident Commander	Name of on-scene IC of Incident within an Incident (<i>Ex: TFLD Jones</i>)
Crew Patient Care	Name of Care Provider (<i>Ex: EMT Smith</i>)

3. INITIAL PATIENT ASSESSMENT: Complete this section for each patient as applicable (start with the most severe patient)

Patient Assessment: (IRPG PAGE 106)	Age:	Weight:	Chief Complaint:	
Skin Signs: (color/moisture/temp)	Level of Consciousness:	BP:	HR:	Respirations:
Treatment:				

4. TRANSPORT PLAN:

Evacuation Location (<i>drop point, intersection, helispot, Lat. / Long, hazards</i>)	Patient's ETA to Location:
---	----------------------------

5. ADDITIONAL RESOURCES / EQUIPMENT NEEDS:

Paramedic / EMT - Crews - Immobilization Devices - AED - Oxygen - Trauma Bag - IV/Fluid(s) - Splints - Rope rescue - Wheeled litter - HAZMAT - Extrication

6. COMMUNICATIONS: Identify State Air/Ground EMS Frequencies and Hospital Contacts as applicable

Function	Channel Name/Number	Receive (RX)	Tone/NAC *	Transmit (TX)	Tone/NAC *
COMMAND					
AIR-TO-GRND					
TACTICAL					

7. CONTINGENCY: *Considerations: If primary options fail, what actions can be implemented in conjunction with primary evacuation method? Be thinking ahead.*

8. ADDITIONAL INFORMATION: *Updates/Changes, etc.*

REMEMBER: Confirm ETA's of resources ordered. Act according to your level of training
Be Alert - Keep Calm - Think Clearly - Act Decisively

*** Follow up with MEDL upon return to ICP ***

